

ROUTE NO.	SECTION	COUNTY	SHEETS	DATE
FAU 2830	01-00133-08-BR	WILL	37	24
FED. ROAD DIST. NO.	1	SUBNO.	FED. AID PROJECT-	

SHEET NO. S-13
S-19 SHEETS

Contract #83989

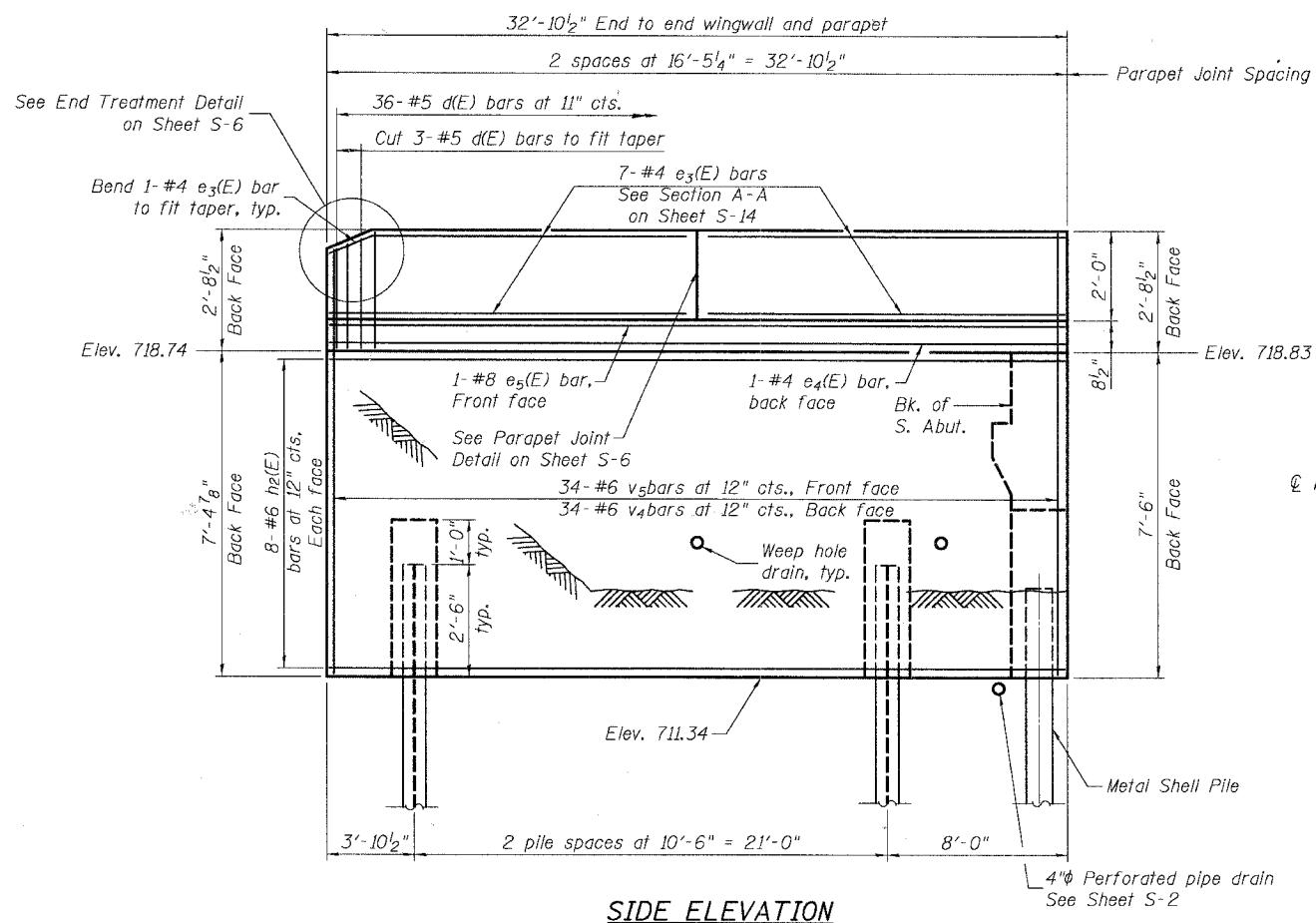
BILL OF MATERIAL

Bar	No.	Size	Length	Shape	
d(E)	36	#5	5'-7"	□	
e ₃ (E)	14	#4	16'-1"	—	
e ₄ (E)	1	#4	32'-6"	—	
e ₅ (E)	1	#8	32'-6"	—	
h ₂ (E)	16	#6	32'-6"	—	
h ₃ (E)	15	#5	2'-6"	—	
h ₄ (E)	15	#5	5'-2"	—	
s ₄ (E)	15	#5	7'-7"	□	
v ₄ (E)	34	#6	10'-2"	—	
v ₅ (E)	34	#6	9'-3"	—	
v ₆ (E)	12	#5	3'-2"	—	
Concrete Superstructures				Cu. Yd.	3.8
Concrete Structures				Cu. Yd.	13.3
Reinforcement Bars, Epoxy Coated				Pound	2,520
Structure Excavation				Cu. Yd.	43
Furnishing Steel Piles, HP 12x53				Foot	75
Driving Piles				Foot	75

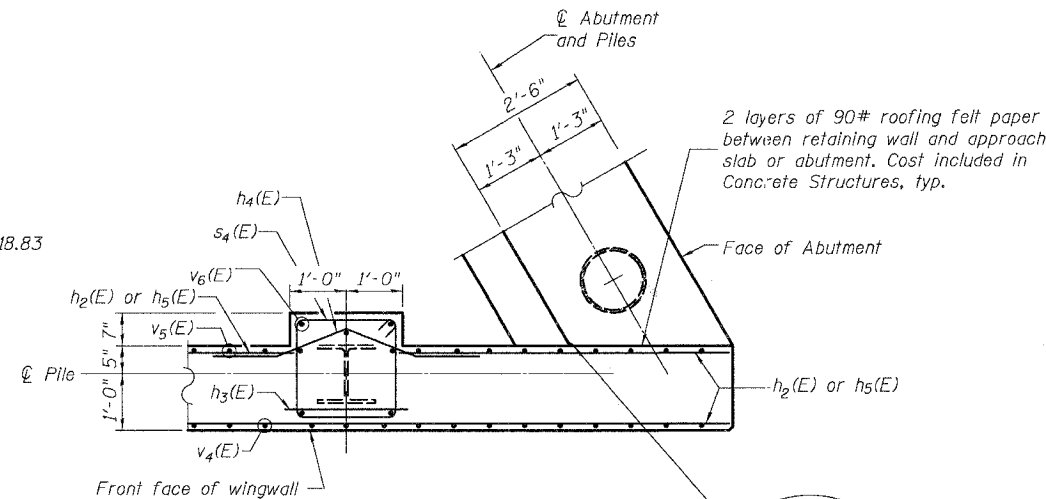
Notes:
See Sheet S-14 for Section A-A.
For details of piles see Sheet S-16.
Cut v(E) bars in field to maintain clear cover from edge of concrete.
Steel HP Piling shall be driven to the Nominal Required Bearing Capacity indicated but not less than a minimum embedment length of 25 feet.
The Steel H-piles shall be according to AASHTO M270 Grade 50

PILE DATA

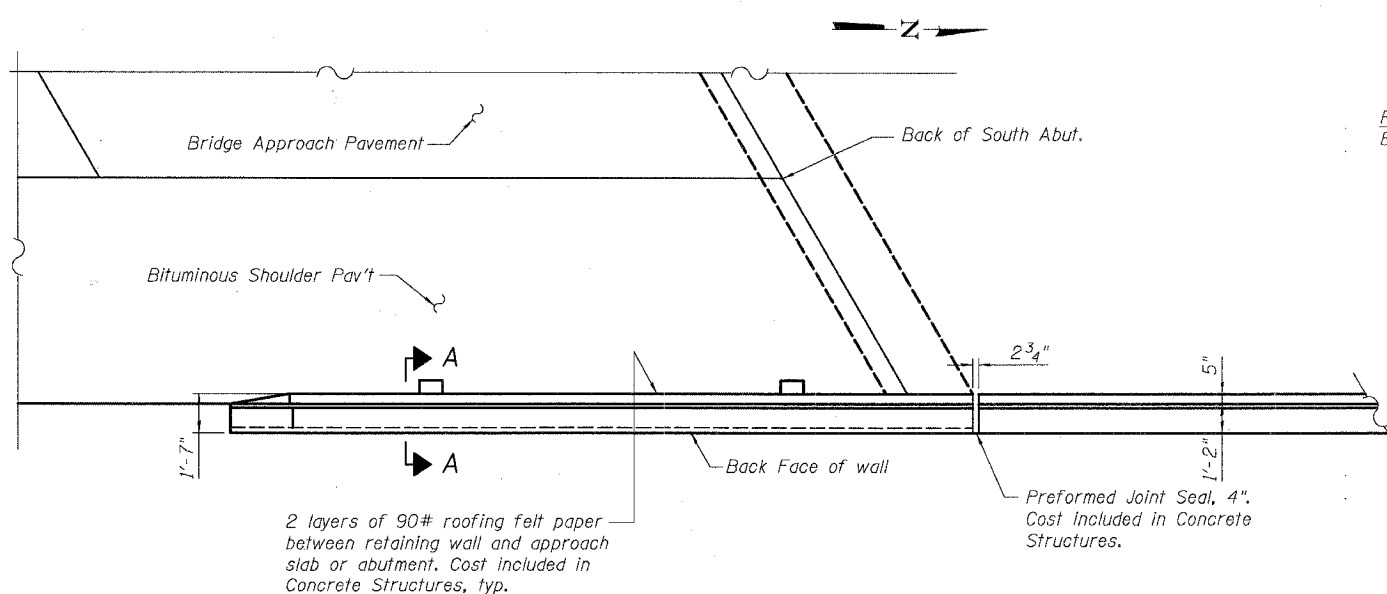
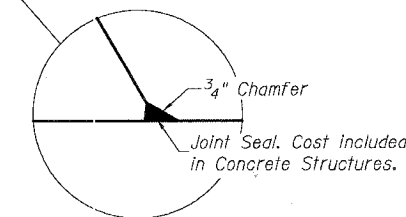
Type: Steel HP 12x53
Nominal Required Bearing: 96 kips
Allowable Resistance Available: 32 kips
Est. Minimum Length: 25'
No. Production Piles: 3
No. Test Piles: 0



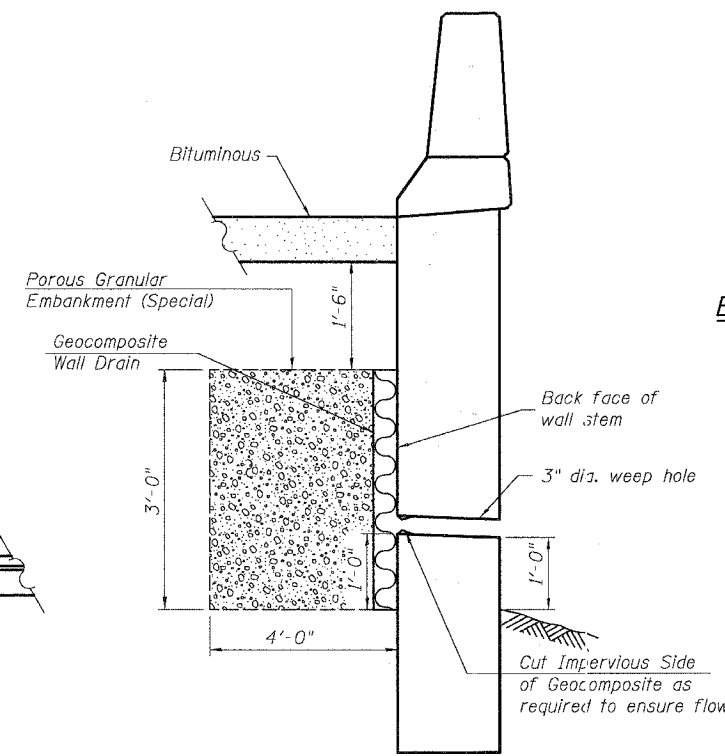
SIDE ELEVATION



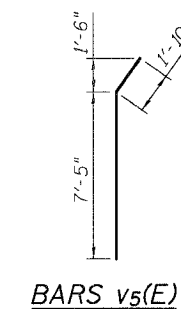
INTEGRAL ABUTMENT CORNER DETAIL



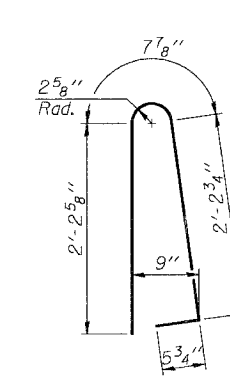
PLAN



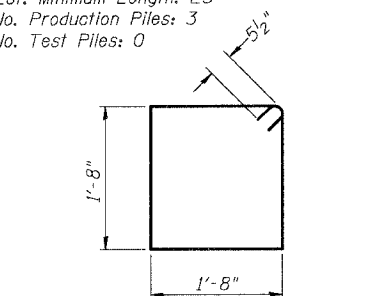
WEEP HOLE DRAIN DETAIL



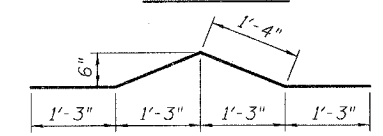
BARS v5(E)



BAR d(E)



BARS s4(E)



BARS h4(E)

DESIGNED	AEU
CHECKED	RGD
DRAWN	WJH
CHECKED	AEU

Illinois Professional Design Firm # 164-000108
SEC GROUP, INC.
Smith Engineering Consultants • SEC Automation • SEC Planning
4500 Prime Parkway, Mokena, IL 60450
T. 815.385.1778 F. 815.385.1781
www.secgroupinc.com

ILLINOIS DEPARTMENT OF TRANSPORTATION
SOUTHEAST WINGWALL DETAILS
OLD MONEE ROAD (COUNTY HIGHWAY 48)
OVER THORN CREEK
WILL COUNTY
SECTION NO. 01-00133-08-BR
STRUCTURE NO. 099-3379
DATE: 11-26-2007