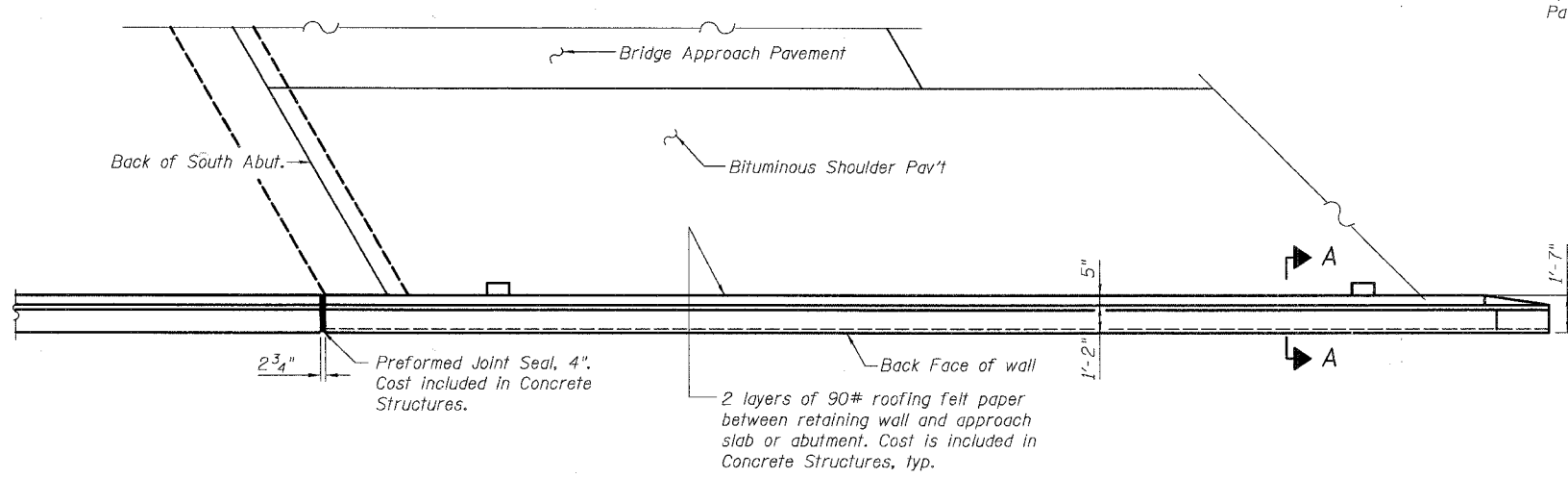
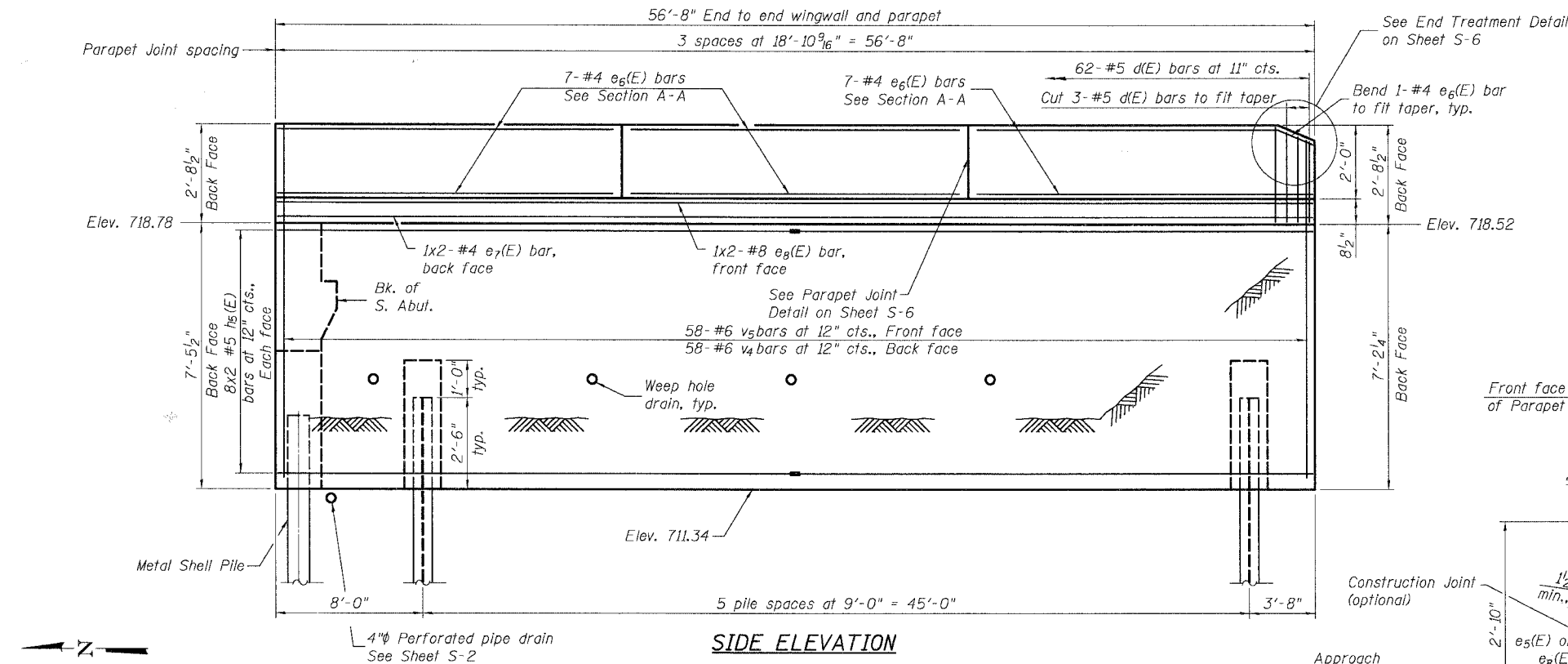


| | | | | |
|---------------------|----------------|------------------|------------|-----------|
| ROUTE NO. | SECTION | COUNTY | JOB SHEETS | SHEET NO. |
| FALU 2830 | 01-00133-08-BR | WILL | 37 | 25 |
| FED. ROAD DIST. NO. | ILLINOIS | FED. AID PROJECT | | |
| 1 | | | | |

SHEET NO. S-14
S-19 SHEETS

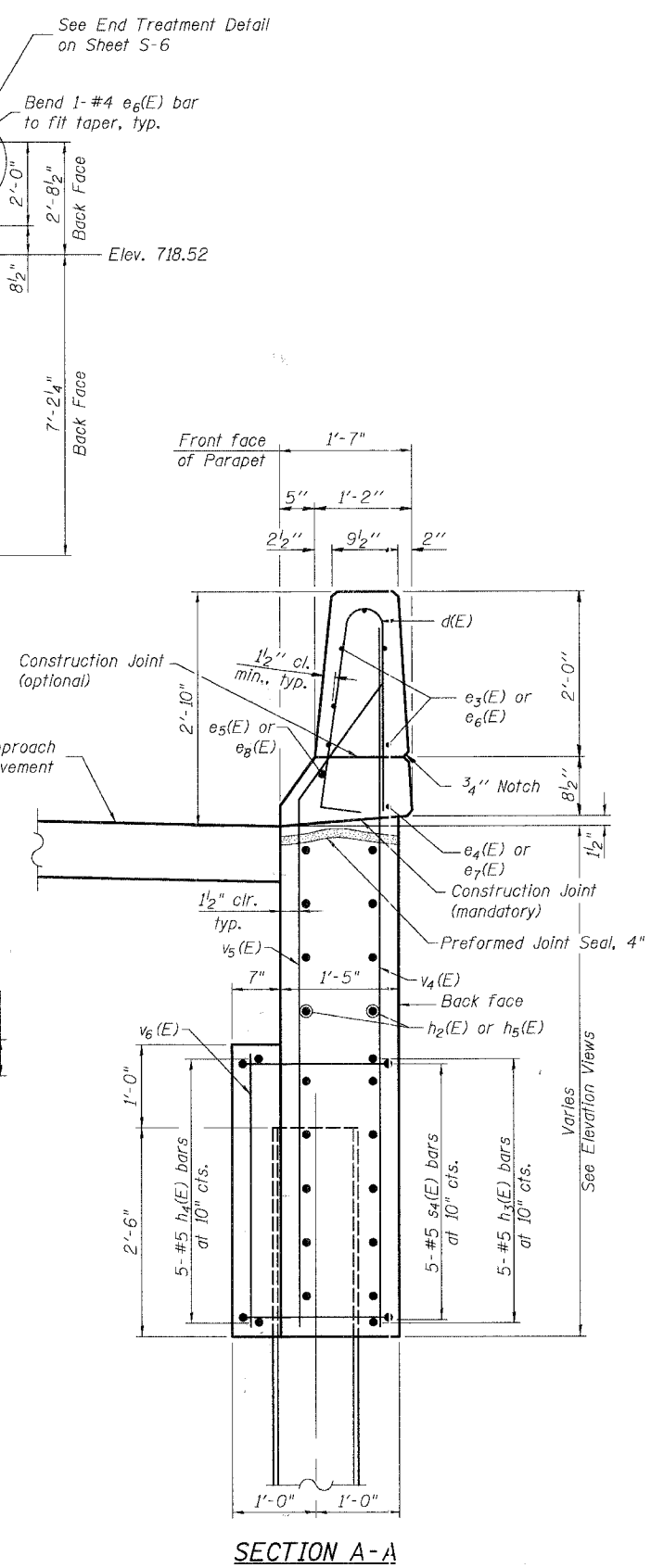
Contract #83989



MIN. BAR LAP

- #4 bar = 1'-4"
- #5 bar = 2'-2"
- #8 bar = 3'-5"

| | |
|----------|-----|
| DESIGNED | AEU |
| CHECKED | RGD |
| DRAWN | WJH |
| CHECKED | AEU |



SECTION A-A

BILL OF MATERIAL

| Bar | No. | Size | Length | Shape |
|----------------------------------|-----|------|---------|-------|
| d(E) | 62 | #5 | 5'-7" | U |
| e6(E) | 21 | #4 | 18'-7" | — |
| e7(E) | 2 | #4 | 28'-10" | — |
| e8(E) | 2 | #8 | 29'-11" | — |
| h3(E) | 30 | #5 | 2'-6" | — |
| h4(E) | 30 | #5 | 5'-2" | — |
| h5(E) | 32 | #6 | 29'-3" | — |
| s4(E) | 30 | #5 | 7'-7" | □ |
| v4(E) | 58 | #6 | 9'-9" | — |
| v5(E) | 58 | #6 | 9'-3" | — |
| v6(E) | 24 | #5 | 3'-2" | — |
| Concrete Superstructures | | | Cu. Yd. | 6.5 |
| Concrete Structures | | | Cu. Yd. | 21.7 |
| Reinforcement Bars, Epoxy Coated | | | Pound | 4,440 |
| Structure Excavation | | | Cu. Yd. | 75 |
| Furnishing Steel Piles, HP 12x53 | | | Foot | 150 |
| Driving Piles | | | Foot | 150 |

Notes:
Cut v(E) bars in field to maintain clear cover from edge of concrete.
Steel HP Piling shall be driven to the Nominal Required Bearing Capacity indicated but not less than a minimum embedment length of 25 feet.
The Steel H-piles shall be according to AASHTO M270 Grade 50.

PILE DATA

Type: Steel HP 12x53
Nominal Required Bearing: 96 kips
Allowable Resistance Available: 32 kips
Est. Minimum Length: 25'
No. Production Piles: 6
No. Test Piles: 0

ILLINOIS DEPARTMENT OF TRANSPORTATION

SOUTHWEST WINGWALL DETAILS
OLD MONEE ROAD (COUNTY HIGHWAY 48)
OVER THORN CREEK
WILL COUNTY
SECTION NO. 01-00133-08-BR
STRUCTURE NO. 099-3379

DATE: 11-26-2007

Illinois Professional Design Firm # 164-000108

SEC GROUP, INC.
Smith Engineering Consultants • SEC Automation • SEC Planning
4500 Prime Parkway, McHenry, IL 60050
t: 815.395.1779 f: 815.395.1781
www.secgroupinc.com