

F.A.U. RTE.	SECTION	COUNTY	TOTAL SHEETS	SHEET NO.
2619	06-0096-00-RS	DUPAGE	24	7
STA. 20+00	TO STA. 26+00			
FED. ROAD DIST. NO.	ILLINOIS	FED AID PROJECT		
C-91-100-07		M-8003 (736)		
CONTRACT NO.: 83990				

WATER MAIN FITTINGS

WATER MAIN PIPES

WATER VALVE VAULTS

FIRE HYDRANTS

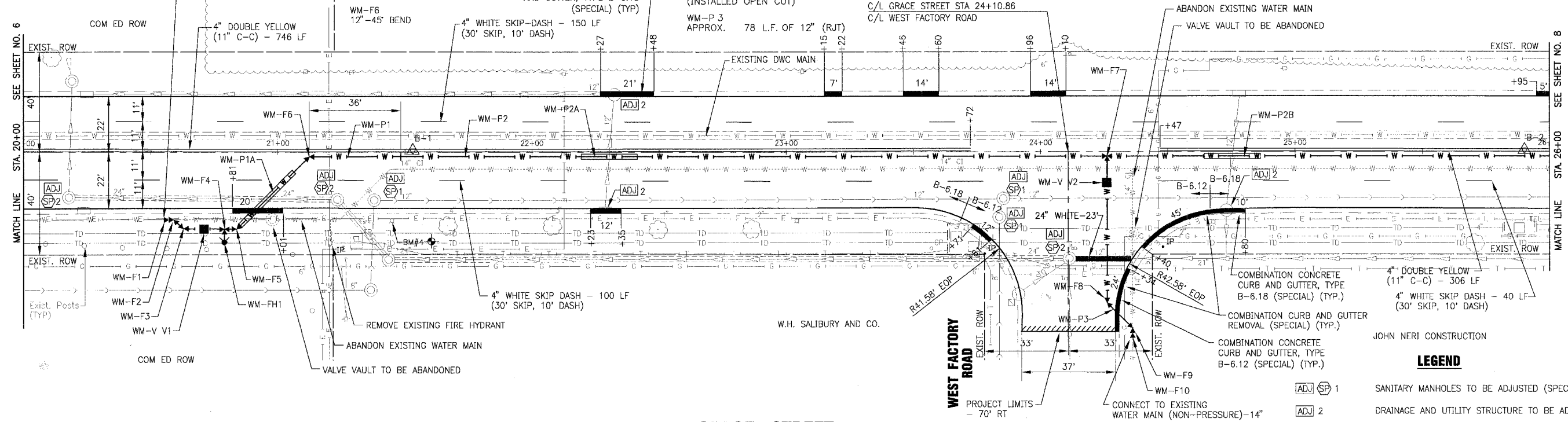
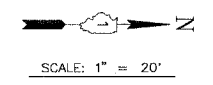
CONNECTION TO EXISTING WATER MAIN (NON-PRESSURE)-14"
(EXACT DEPTH OF EXISTING WATER MAIN IS UNKNOWN AT CONNECTION POINT. EXPOSE EXISTING WATER MAIN AT ONSET OF CONSTRUCTION TO DETERMINE DEPTH AND ADJUST VAULT AND HYDRANT DEPTH AS NECESSARY. CLOSE EXISTING VALVE AND CONNECT TO EXISTING MAIN. INSTALL WM-V V1, SWAB CONNECTING PIPE AND FITTINGS, AND REINSTATE WATER FLOW SOUTH OF NEW VALVE VAULT WHEN APPROVED BY ENGINEER. REMOVE EXISTING PIPE BETWEEN CONNECTION POINT AND EXISTING VALVE TO ALLOW INSTALLATION OF NEW WATER MAIN TO NORTH.)

- WM-F1 14"x12" REDUCER (CONNECT TO EXISTING)
- WM-F2 12"-45" BEND
- WM-F3 12"-45" BEND
- WM-F4 12"x6" TEE
- WM-F5 12"-45" BEND
- WM-F6 12"-45" BEND
- WM-F7 STA. 24+26 12" TEE
- WM-F8 12"-45" BEND
- WM-F9 12"-45" BEND
- WM-F10 14"x12" REDUCER (CONNECT TO EXISTING)

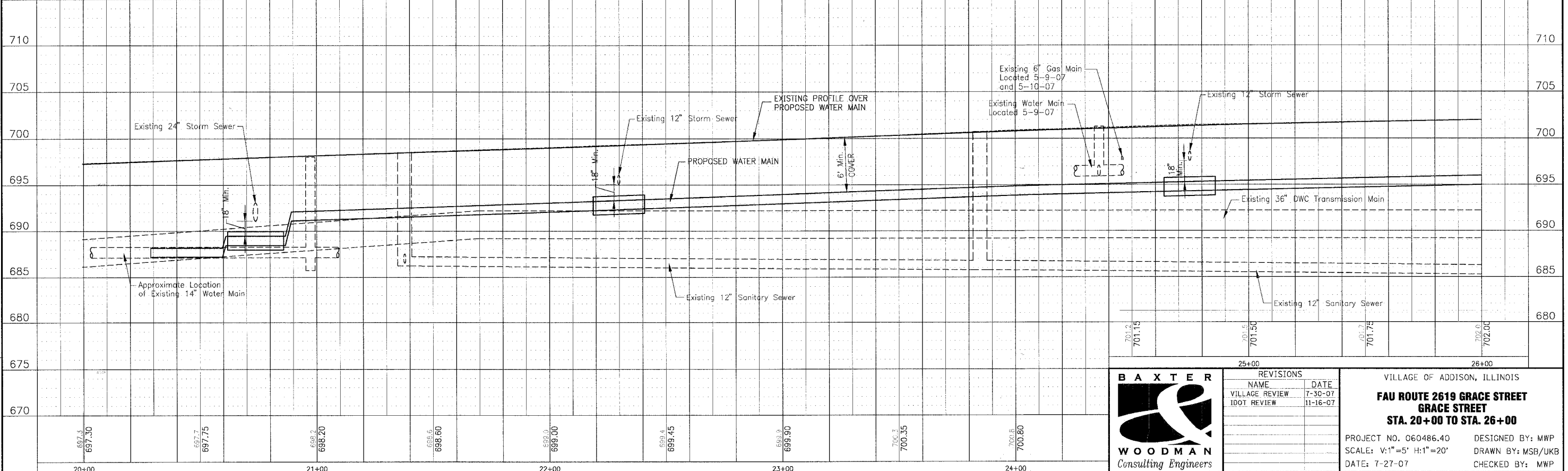
- WM-P 1 APPROX. 107 L.F. OF 12" (RJT)
- WM-P 1A APPROX. 30 L.F. OF 20" CASING (INSTALLED OPEN CUT)
- WM-P 2 APPROX. 452 L.F. OF 12"
- WM-P 2A APPROX. 22 L.F. OF 20" CASING (INSTALLED OPEN CUT)
- WM-P 2B APPROX. 22 L.F. OF 20" CASING (INSTALLED OPEN CUT)
- WM-P 3 APPROX. 78 L.F. OF 12" (RJT)

- WM-V V1 12" GATE VALVE IN VAULT
- WM-V V2 12" GATE VALVE IN VAULT

WM-FH1



GRACE STREET



BAXTER & WOODMAN
Consulting Engineers

REVISIONS	
NAME	DATE
VILLAGE REVIEW	7-30-07
IDOT REVIEW	11-16-07

VILLAGE OF ADDISON, ILLINOIS
FAU ROUTE 2619 GRACE STREET
STA. 20+00 TO STA. 26+00
PROJECT NO. 060486.40 DESIGNED BY: MWP
SCALE: V:1"=5' H:1"=20' DRAWN BY: MSB/UKB
DATE: 7-27-07 CHECKED BY: MWP

I:\AD\DW\060486 - Grace STP (LAPP)\DWGS\60486BAP.L.dwg - PP-SH7
Plotted: 11-20-07 @ 4:37pm By: 560kar
Copyright © 2007, By Baxter & Woodman, Inc.
State of Illinois - Professional Design Firm
License No. - 184-001121 - Expires 4-30-07