

**WATER MAIN FITTINGS**

- WM-F32 12"x8" TEE (INSIDE VALVE VAULT)
- WM-F33 8"-45" BEND
- WM-F34 8"-45" BEND (CONNECT TO EXISTING)
- WM-F 35 STA. 45+03 12"x6" TEE
- WM-F36 12"-45" BEND
- WM-F37 12"-45" BEND
- WM-F38 14"-12" TEE
- WM-F39 14" CUTTING-IN-SLEEVE

**WATER MAIN PIPES**

- WM-P 18 APPROX. 93 L.F. OF 12"
- WM-P 19 APPROX. 32 L.F. OF 8" (RJT)
- WM-P 20 APPROX. 25 L.F. OF 6" (RJT) (ADDITIONAL HYDRANT LEADER)
- WM-P 21 APPROX. 118 L.F. OF 12" (RJT)
- WM-P 21A APPROX. 27 L.F. OF 20" CASING (INSTALLED OPEN CUT)
- WM-P 22 APPROX. 25 L.F. OF 14"

**WATER VALVE VAULTS**

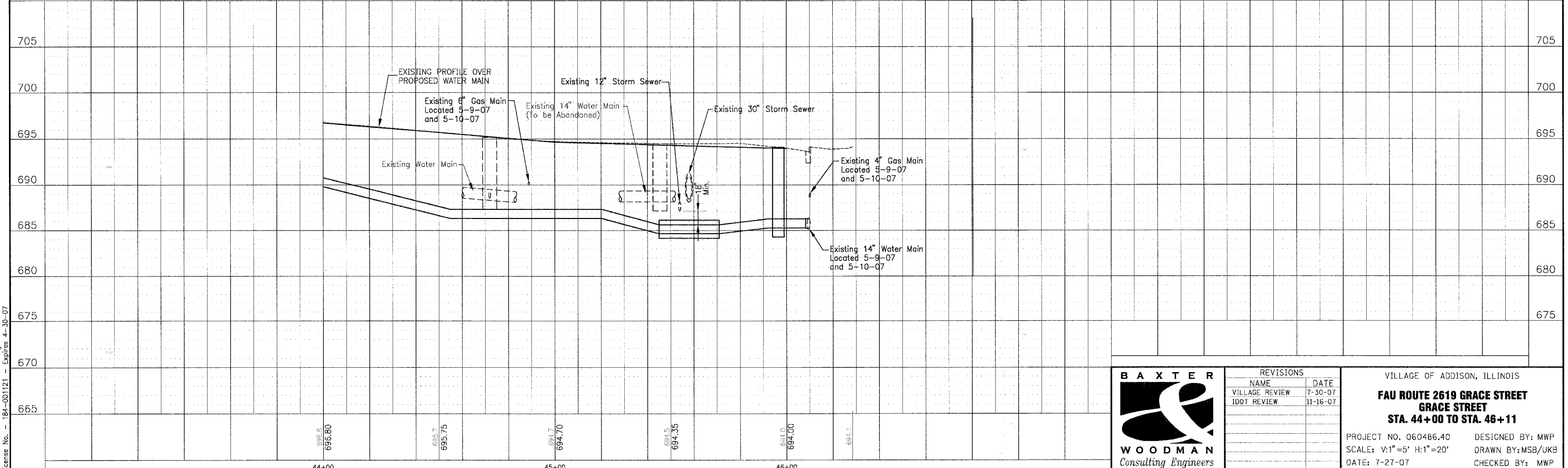
- WM-V V9 8" GATE VALVE IN VAULT (VALVE ATTACHED TO LINE TEE)
- WM-V V10 12" GATE VALVE IN VAULT
- WM-V V11 14" GATE VALVE IN VAULT (VALVE ATTACHED TO LINE TEE)

**FIRE HYDRANTS**

- WM-FH8 STA. 45+03

**LEGEND**

- ADJ SP 1 SANITARY MANHOLES TO BE ADJUSTED (SPECIAL)
- ADJ 2 DRAINAGE AND UTILITY STRUCTURE TO BE ADJUSTED
- ADJ SP 2 DRAINAGE AND UTILITY STRUCTURE ADJUSTMENT (SPECIAL)



I:\ADDMVA\060486 - Grace STP (LAPP)\DWGS\60486A\PLN.dwg - PP-SH11  
 Plotted: 11-20-07 @ 5:04pm By: 560kar  
 Copyright © 2007, By Baxter & Woodman, Inc.  
 State of Illinois - Professional Design Firm  
 License No. - 184-001121 - Expires 4-30-07



| REVISIONS      |          |
|----------------|----------|
| NAME           | DATE     |
| VILLAGE REVIEW | 7-30-07  |
| IDOT REVIEW    | 11-16-07 |

VILLAGE OF ADDISON, ILLINOIS  
**FAU ROUTE 2619 GRACE STREET**  
**GRACE STREET**  
**STA. 44+00 TO STA. 46+11**

PROJECT NO. 060486.40 DESIGNED BY: MWP  
 SCALE: V:1"=5' H:1"=20' DRAWN BY: MSB/UKB  
 DATE: 7-27-07 CHECKED BY: MWP