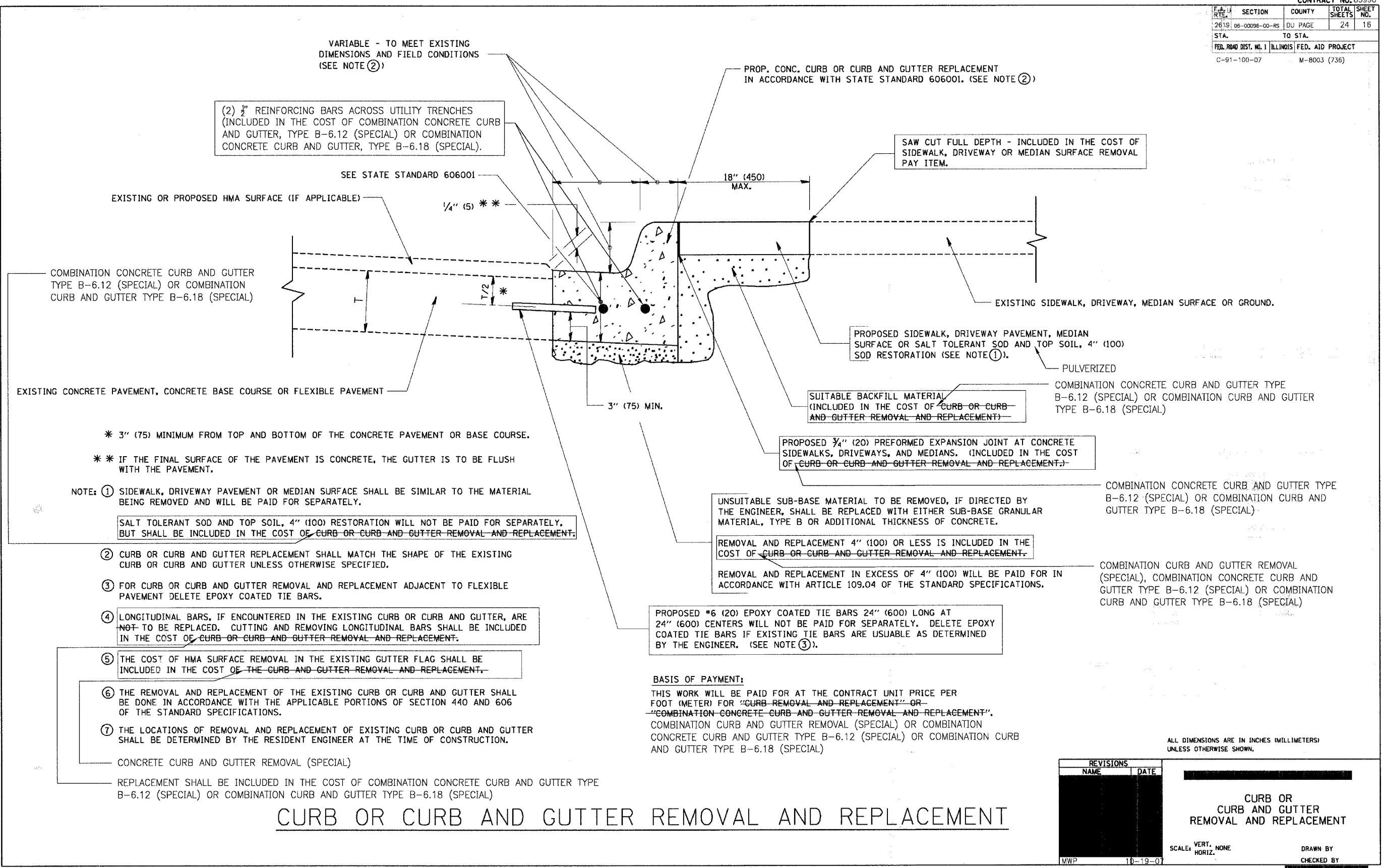


CONTRACT NO. 83990			
SECTION	COUNTY	TOTAL SHEETS	SHEET NO.
2619	06-00096-00-RS	24	16
STA. TO STA.		DU PAGE	
FED. ROAD DIST. NO. 1 ILLINOIS FED. AID PROJECT			
C-91-100-07		M-8003 (736)	



- \* 3" (75) MINIMUM FROM TOP AND BOTTOM OF THE CONCRETE PAVEMENT OR BASE COURSE.
- \*\* IF THE FINAL SURFACE OF THE PAVEMENT IS CONCRETE, THE GUTTER IS TO BE FLUSH WITH THE PAVEMENT.

NOTE: ① SIDEWALK, DRIVEWAY PAVEMENT OR MEDIAN SURFACE SHALL BE SIMILAR TO THE MATERIAL BEING REMOVED AND WILL BE PAID FOR SEPARATELY.

SALT TOLERANT SOD AND TOP SOIL, 4" (100) RESTORATION WILL NOT BE PAID FOR SEPARATELY, BUT SHALL BE INCLUDED IN THE COST OF CURB OR CURB AND GUTTER REMOVAL AND REPLACEMENT.

② CURB OR CURB AND GUTTER REPLACEMENT SHALL MATCH THE SHAPE OF THE EXISTING CURB OR CURB AND GUTTER UNLESS OTHERWISE SPECIFIED.

③ FOR CURB OR CURB AND GUTTER REMOVAL AND REPLACEMENT ADJACENT TO FLEXIBLE PAVEMENT DELETE EPOXY COATED TIE BARS.

④ LONGITUDINAL BARS, IF ENCOUNTERED IN THE EXISTING CURB OR CURB AND GUTTER, ARE NOT TO BE REPLACED. CUTTING AND REMOVING LONGITUDINAL BARS SHALL BE INCLUDED IN THE COST OF CURB OR CURB AND GUTTER REMOVAL AND REPLACEMENT.

⑤ THE COST OF HMA SURFACE REMOVAL IN THE EXISTING GUTTER FLAG SHALL BE INCLUDED IN THE COST OF THE CURB AND GUTTER REMOVAL AND REPLACEMENT.

⑥ THE REMOVAL AND REPLACEMENT OF THE EXISTING CURB OR CURB AND GUTTER SHALL BE DONE IN ACCORDANCE WITH THE APPLICABLE PORTIONS OF SECTION 440 AND 606 OF THE STANDARD SPECIFICATIONS.

⑦ THE LOCATIONS OF REMOVAL AND REPLACEMENT OF EXISTING CURB OR CURB AND GUTTER SHALL BE DETERMINED BY THE RESIDENT ENGINEER AT THE TIME OF CONSTRUCTION.

CONCRETE CURB AND GUTTER REMOVAL (SPECIAL)  
REPLACEMENT SHALL BE INCLUDED IN THE COST OF COMBINATION CONCRETE CURB AND GUTTER TYPE B-6.12 (SPECIAL) OR COMBINATION CURB AND GUTTER TYPE B-6.18 (SPECIAL)

UNSATISFACTORY SUB-BASE MATERIAL TO BE REMOVED, IF DIRECTED BY THE ENGINEER, SHALL BE REPLACED WITH EITHER SUB-BASE GRANULAR MATERIAL, TYPE B OR ADDITIONAL THICKNESS OF CONCRETE.

REMOVAL AND REPLACEMENT 4" (100) OR LESS IS INCLUDED IN THE COST OF CURB OR CURB AND GUTTER REMOVAL AND REPLACEMENT.

REMOVAL AND REPLACEMENT IN EXCESS OF 4" (100) WILL BE PAID FOR IN ACCORDANCE WITH ARTICLE 109.04 OF THE STANDARD SPECIFICATIONS.

PROPOSED #6 (20) EPOXY COATED TIE BARS 24" (600) LONG AT 24" (600) CENTERS WILL NOT BE PAID FOR SEPARATELY. DELETE EPOXY COATED TIE BARS IF EXISTING TIE BARS ARE USABLE AS DETERMINED BY THE ENGINEER. (SEE NOTE ③).

**BASIS OF PAYMENT:**  
THIS WORK WILL BE PAID FOR AT THE CONTRACT UNIT PRICE PER FOOT (METER) FOR "CURB REMOVAL AND REPLACEMENT" OR "COMBINATION CONCRETE CURB AND GUTTER REMOVAL AND REPLACEMENT", COMBINATION CURB AND GUTTER REMOVAL (SPECIAL) OR COMBINATION CONCRETE CURB AND GUTTER TYPE B-6.12 (SPECIAL) OR COMBINATION CURB AND GUTTER TYPE B-6.18 (SPECIAL)

COMBINATION CONCRETE CURB AND GUTTER TYPE B-6.12 (SPECIAL) OR COMBINATION CURB AND GUTTER TYPE B-6.18 (SPECIAL)

COMBINATION CURB AND GUTTER REMOVAL (SPECIAL), COMBINATION CONCRETE CURB AND GUTTER TYPE B-6.12 (SPECIAL) OR COMBINATION CURB AND GUTTER TYPE B-6.18 (SPECIAL)

ALL DIMENSIONS ARE IN INCHES (MILLIMETERS) UNLESS OTHERWISE SHOWN.

REVISIONS	
NAME	DATE

CURB OR CURB AND GUTTER REMOVAL AND REPLACEMENT

SCALE: VERT. NONE  
HORIZ. 1" = 10'-0"

DRAWN BY  
CHECKED BY

# CURB OR CURB AND GUTTER REMOVAL AND REPLACEMENT

I:\ADMIN\064496 - 0606 STP (LAPP)\DWG\0606484-DIST1-DETS.dwg - BDI00-06-SHB  
 Plotted: 11/20/07 @ 2:25pm By: 594c  
 State of Illinois - Professional Engineer  
 License No.: 184-00112 - Expires 4-30-07

PLOT DATE: 11/20/07  
 FILE NAME: I:\ADMIN\064496 - 0606 STP (LAPP)\DWG\0606484-DIST1-DETS.dwg  
 PLOT SCALE: 8.8188 / IN.  
 USER NAME: bdi00