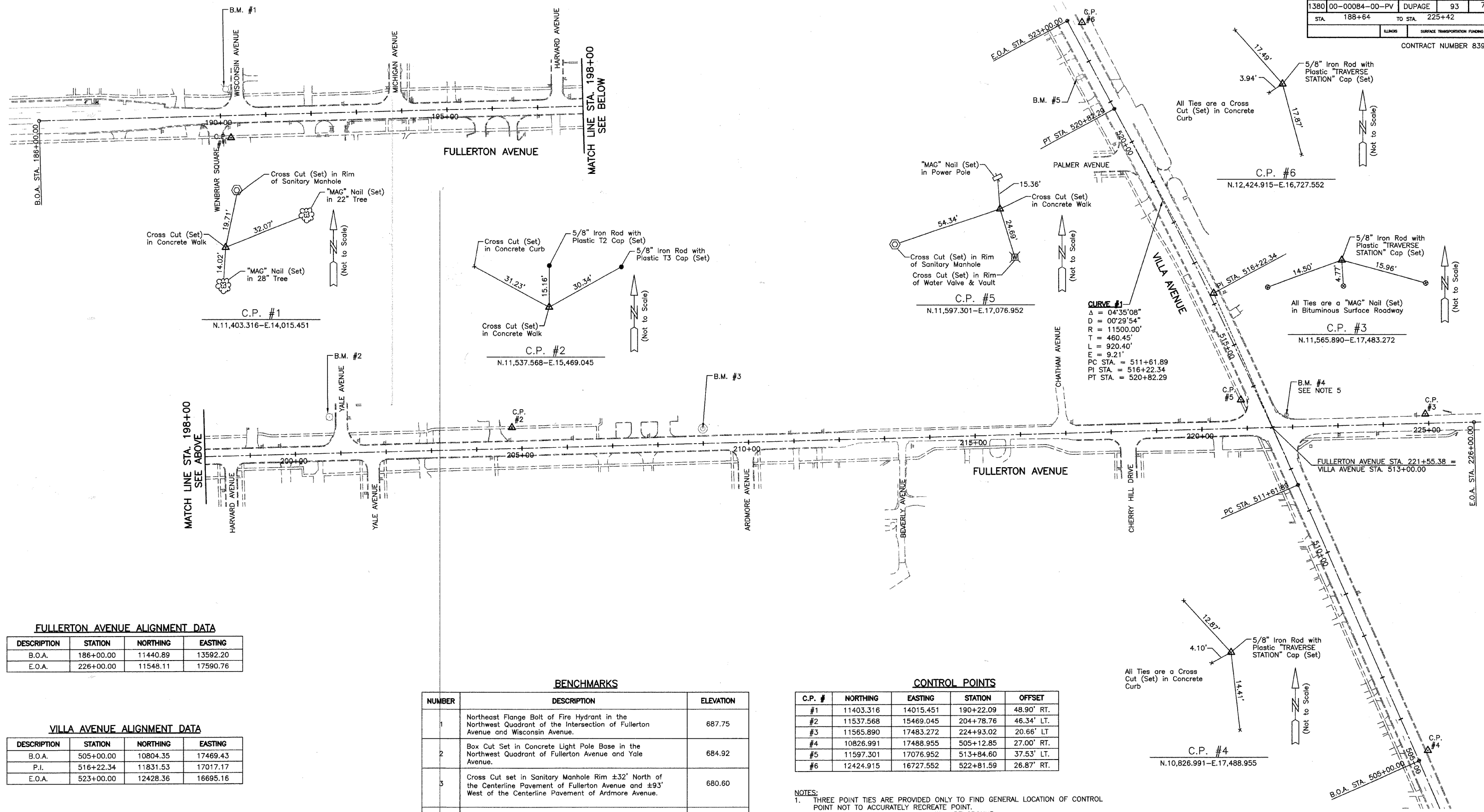


SECTION	COUNTY	TOTAL SHEETS	SHEET NO
1380 00-00084-00-PV	DUPAGE	93	7
STA. 188+64	TO STA. 225+42		
ILLINOIS		SURFACE TRANSPORTATION FINANCING	

CONTRACT NUMBER 83993



FULLERTON AVENUE ALIGNMENT DATA

DESCRIPTION	STATION	NORTHING	EASTING
B.O.A.	186+00.00	11440.89	13592.20
E.O.A.	226+00.00	11548.11	17590.76

VILLA AVENUE ALIGNMENT DATA

DESCRIPTION	STATION	NORTHING	EASTING
B.O.A.	505+00.00	10804.35	17469.43
P.I.	516+22.34	11831.53	17017.17
E.O.A.	523+00.00	12428.36	16695.16

BENCHMARKS

NUMBER	DESCRIPTION	ELEVATION
1	Northeast Flange Bolt of Fire Hydrant in the Northwest Quadrant of the Intersection of Fullerton Avenue and Wisconsin Avenue.	687.75
2	Box Cut Set in Concrete Light Pole Base in the Northwest Quadrant of Fullerton Avenue and Yale Avenue.	684.92
3	Cross Cut set in Sanitary Manhole Rim ±32' North of the Centerline Pavement of Fullerton Avenue and ±93' West of the Centerline Pavement of Ardmore Avenue.	680.60
4	Found Bernstein Monument in the Northeast Quadrant of the Intersection of Fullerton Avenue and Villa Avenue.	672.65
5	Railroad Spike Set in Second Power Pole North of Palmer Avenue on the West Side of Villa Avenue.	676.30
6	Railroad Spike Set in Power Pole in the Southwest Quadrant of the Intersection of Villa Avenue and Lorraine Avenue. (Not shown on this sheet)	679.34

CONTROL POINTS

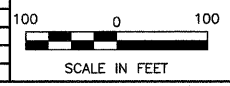
C.P. #	NORTHING	EASTING	STATION	OFFSET
#1	11403.316	14015.451	190+22.09	48.90' RT.
#2	11537.568	15469.045	204+78.76	46.34' LT.
#3	11565.890	17483.272	224+93.02	20.66' LT
#4	10826.991	17488.955	505+12.85	27.00' RT.
#5	11597.301	17076.952	513+84.60	37.53' LT.
#6	12424.915	16727.552	522+81.59	26.87' RT.

- NOTES:**
- THREE POINT TIES ARE PROVIDED ONLY TO FIND GENERAL LOCATION OF CONTROL POINT NOT TO ACCURATELY RECREATE POINT.
 - COORDINATES AND DISTANCES SHOWN ARE GROUND.
 - BASIS OF BEARINGS IS THE ILLINOIS STATE PLANE COORDINATE SYSTEM EAST ZONE (NAD83).
 - COORDINATES LISTED ARE PROJECT COORDINATES AND CAN BE CONVERTED TO ILLINOIS STATE PLANE EAST ZONE (NAD83(1997)) GRID VALUES BY MULTIPLYING LISTED VALUES BY 0.999947234.
 - RESET BENCH MONUMENT BY AUTHORIZED SURVEYOR OR AGENT AS DIRECTED BY THE ENGINEER. THE RELOCATION SHOULD BE COORDINATED WITH DUPAGE COUNTY.

- NOTES:**
- B.O.A. = BEGINNING OF ALIGNMENT
 - P.C. = POINT OF CURVATURE
 - P.T. = POINT OF TANGENT
 - P.I. = POINT OF INTERSECTION
 - E.O.A. = END OF ALIGNMENT
 - C.P. = CONTROL POINT
 - B.M. = BENCH MARK

VILLAGE OF ADDISON
ALIGNMENT, TIES, AND BENCHMARKS
FULLERTON AVENUE STP IMPROVEMENT

REVISIONS	
NAME	DATE



DATE: 11/26/2007
DESIGNED BY: RTM
TECHNICIAN: JRR
CHECKED BY: JRV