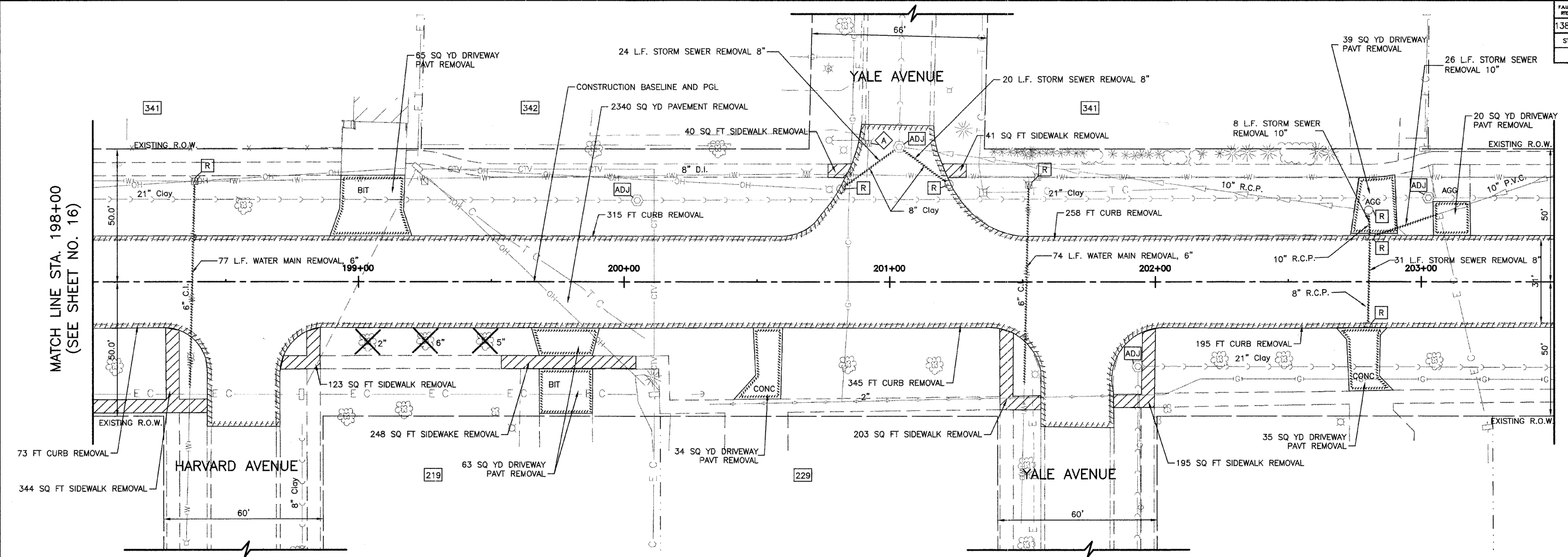


FAH. PTE.	SECTION	COUNTY	TOTAL SHEETS	SHEET NO.
1380	00-00084-00-PV	DUPAGE	93	17

STA.	TO STA.	ELIMOS	SURFACE TRANSPORTATION FUNDING
198+00	203+50		

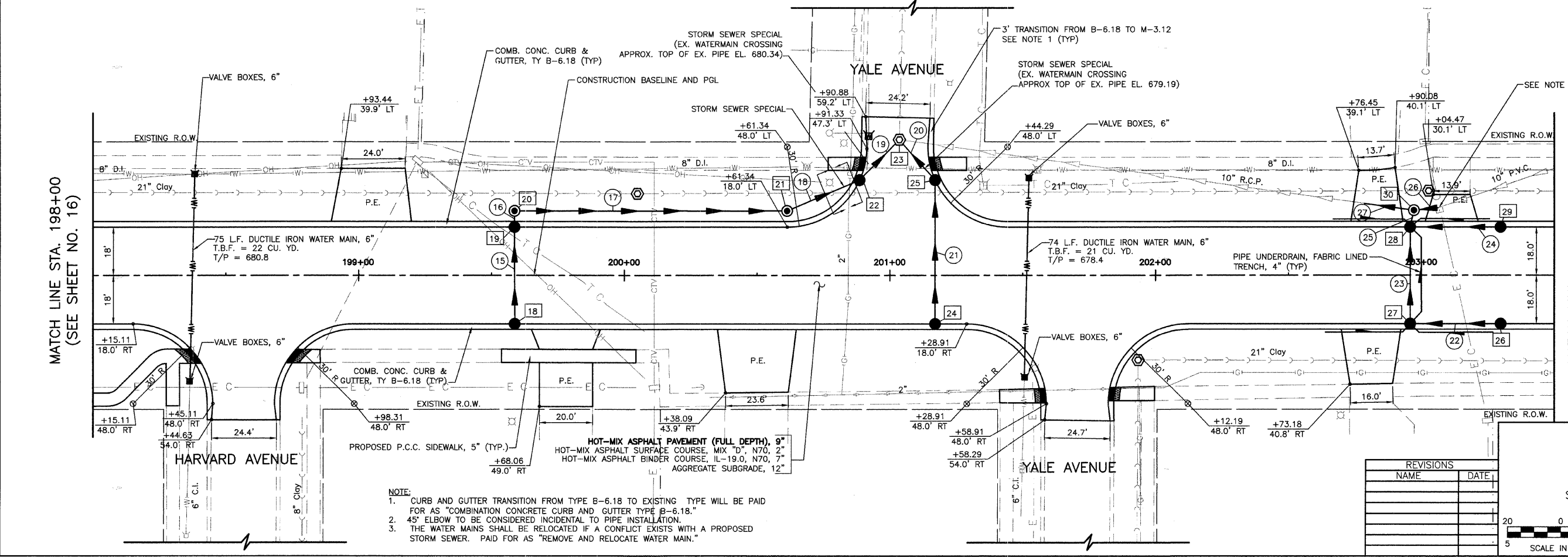
CONTRACT NUMBER 83993



MATCH LINE STA. 203+50  
(SEE SHEET NO. 18)

MATCH LINE STA. 198+00  
(SEE SHEET NO. 16)

FULLERTON AVENUE  
EXISTING TOPOGRAPHY



MATCH LINE STA. 203+50  
(SEE SHEET NO. 18)

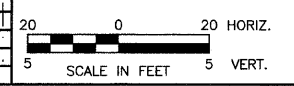
MATCH LINE STA. 198+00  
(SEE SHEET NO. 16)

FULLERTON AVENUE  
PROPOSED IMPROVEMENTS

VILLAGE OF ADDISON  
**ROADWAY PLAN**  
FULLERTON AVENUE  
STA. 198+00 TO 203+50

- NOTE:
- CURB AND GUTTER TRANSITION FROM TYPE B-6.18 TO EXISTING TYPE WILL BE PAID FOR AS "COMBINATION CONCRETE CURB AND GUTTER TYPE B-6.18."
  - 45° ELBOW TO BE CONSIDERED INCIDENTAL TO PIPE INSTALLATION.
  - THE WATER MAINS SHALL BE RELOCATED IF A CONFLICT EXISTS WITH A PROPOSED STORM SEWER. PAID FOR AS "REMOVE AND RELOCATE WATER MAIN."

REVISIONS	
NAME	DATE



DATE: 11/26/2007  
DESIGNED BY: RTM  
TECHNICIAN: JRR  
CHECKED BY: JRV