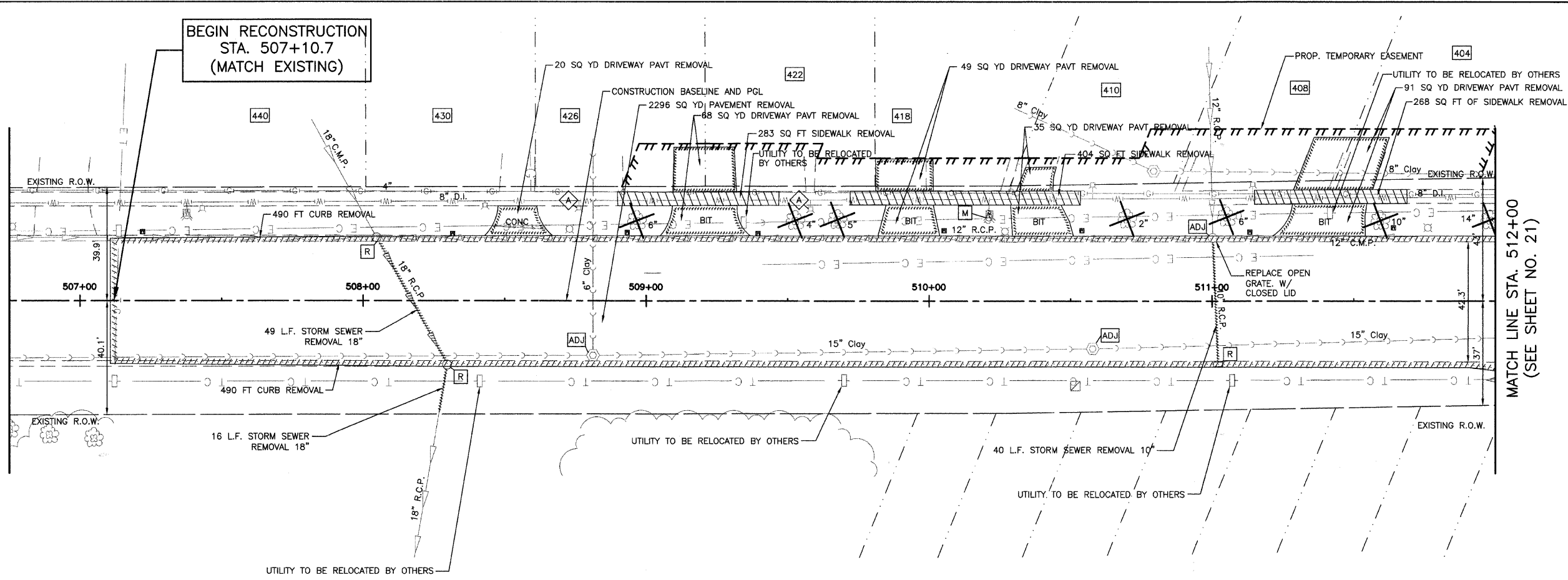
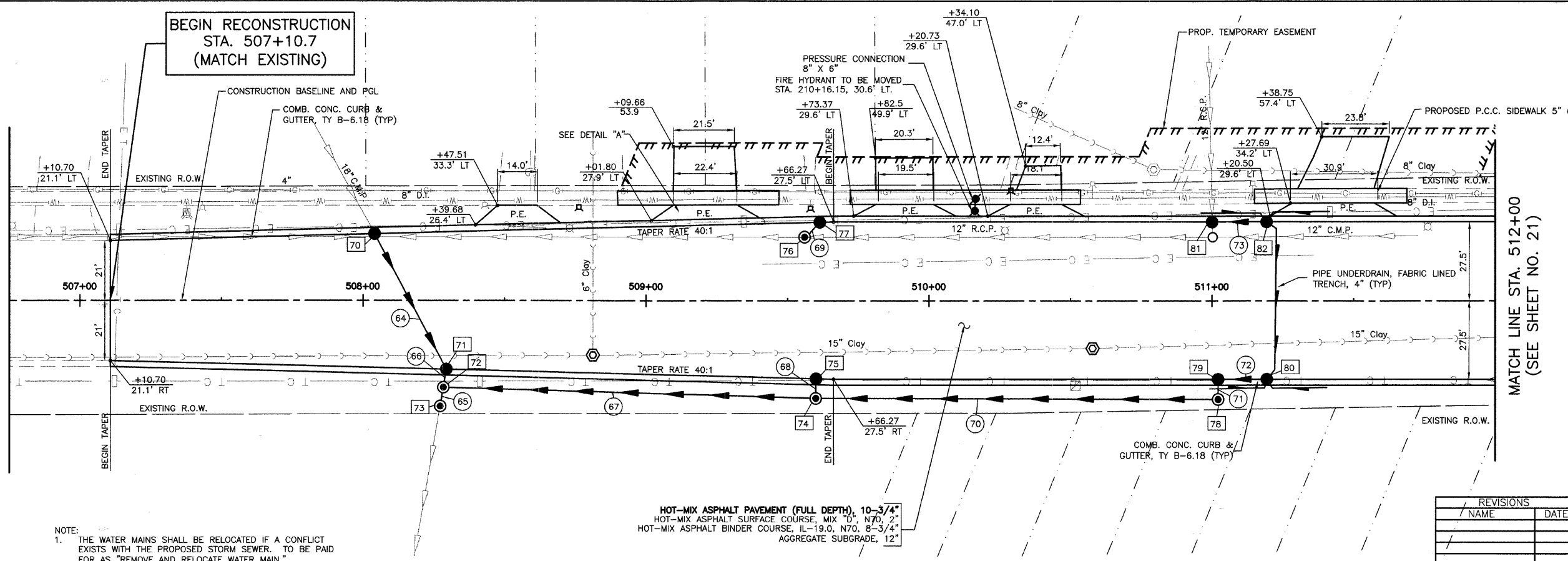


FILE NO.	SECTION	COUNTY	TOTAL SHEETS	SHEET NO.
1380	00-00084-00-PV	DUPAGE	93	22
STA.	507+56	TO STA.	512+00	
	ILLINOIS	SURFACE TRANSPORTATION FUNDING		
CONTRACT NUMBER 83993				

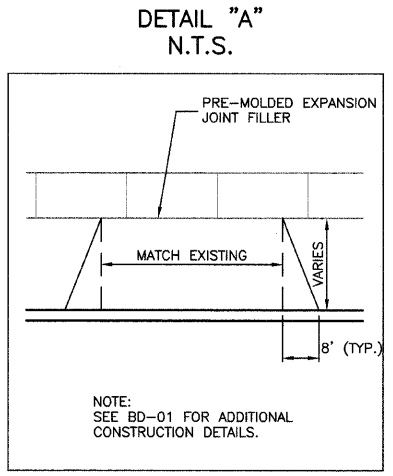


MATCH LINE STA. 512+00
(SEE SHEET NO. 21)

VILLA AVENUE
EXISTING TOPOGRAPHY



MATCH LINE STA. 512+00
(SEE SHEET NO. 21)

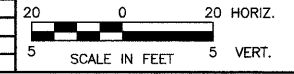


VILLA AVENUE
PROPOSED IMPROVEMENTS

ROADWAY PLAN
VILLA AVENUE

STA. 507+10.7 TO 512+00.0

REVISIONS	
NAME	DATE



DATE: 11/26/2007
DESIGNED BY: RTM
TECHNICIAN: JRR
CHECKED BY: JRV

NOTE:
1. THE WATER MAINS SHALL BE RELOCATED IF A CONFLICT EXISTS WITH THE PROPOSED STORM SEWER. TO BE PAID FOR AS "REMOVE AND RELOCATE WATER MAIN."

HOT-MIX ASPHALT PAVEMENT (FULL DEPTH), 10-3/4"
HOT-MIX ASPHALT SURFACE COURSE, MIX "D", N70, 2"
HOT-MIX ASPHALT BINDER COURSE, IL-19.0, N70, 8-3/4"
AGGREGATE SUBGRADE, 12"