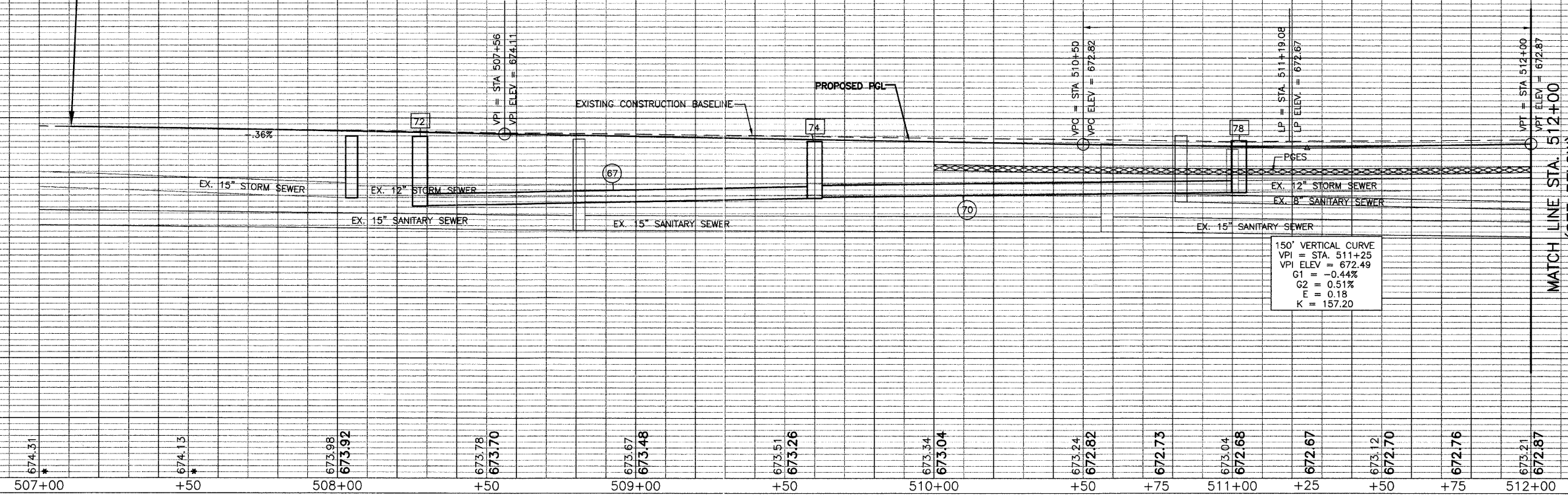


SECTION	COUNTY	TOTAL SHEETS	SHEET NO.
00-00084-00-PV	DUPAGE	93	29
STA. FIRST STA.	TO STA. SECOND STA.	SURFACE TRANSPORTATION FUNDING	
		CONTRACT NUMBER 83993	

BEGIN RECONSTRUCTION  
STA. 507+10.7  
(MATCH EXISTING)

EXISTING CENTERLINE ELEVATION  
PROPOSED P.G.L. ELEVATION

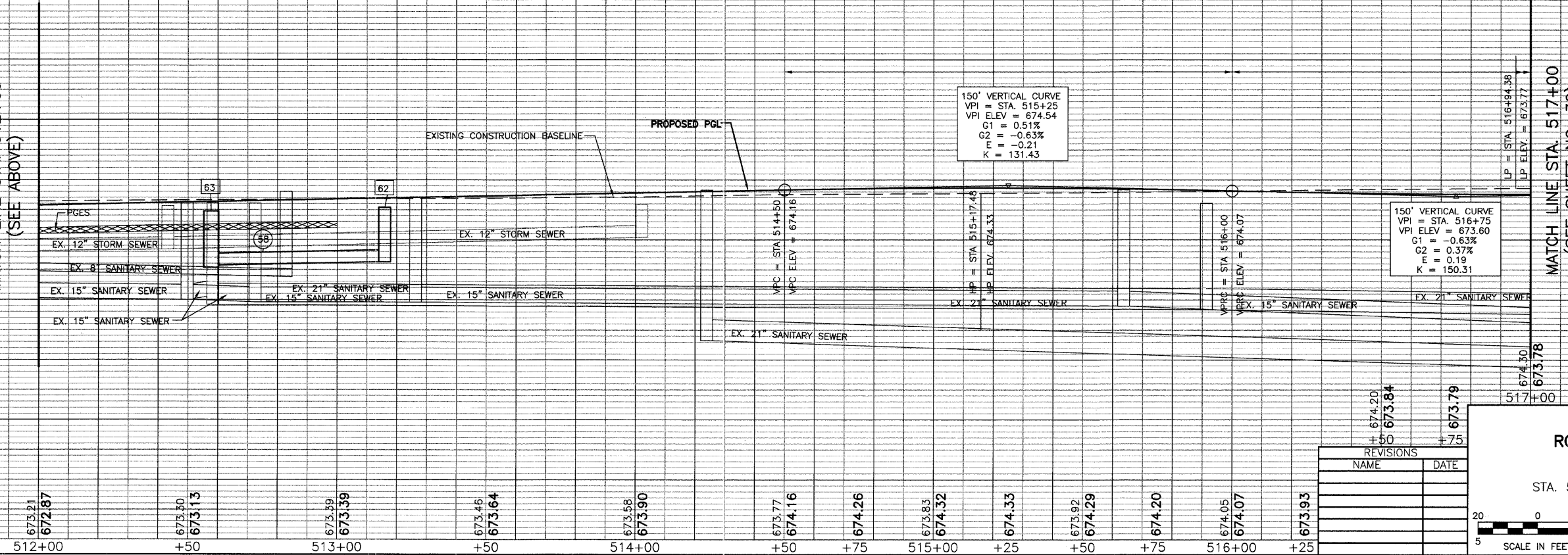


150' VERTICAL CURVE  
VPI = STA. 511+25  
VPI ELEV = 672.49  
G1 = -0.44%  
G2 = 0.51%  
E = 0.18  
K = 157.20

MATCH LINE STA. 512+00  
(SEE BELOW)

MATCH LINE STA. 512+00  
(SEE ABOVE)

EXISTING CENTERLINE ELEVATION  
PROPOSED P.G.L. ELEVATION



150' VERTICAL CURVE  
VPI = STA. 515+25  
VPI ELEV = 674.54  
G1 = 0.51%  
G2 = -0.63%  
E = -0.21  
K = 131.43

150' VERTICAL CURVE  
VPI = STA. 516+75  
VPI ELEV = 673.60  
G1 = -0.63%  
G2 = 0.37%  
E = 0.19  
K = 150.31

MATCH LINE STA. 517+00  
(SEE SHEET NO. 30)

REVISIONS	
NAME	DATE

VILLAGE OF ADDISON  
**ROADWAY PROFILE**  
VILLA AVENUE  
STA. 507+10.7 to 517+00.0

DATE: 11/26/2007  
DESIGNED BY: RTM  
TECHNICIAN: JRR  
CHECKED BY: JRV

SCALE IN FEET  
5 20 0 20 HORIZ.  
5 5 VERT.