

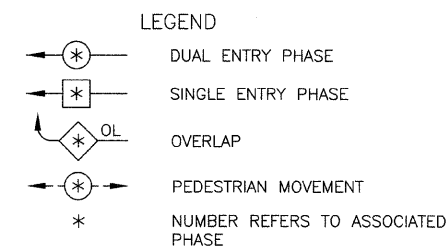
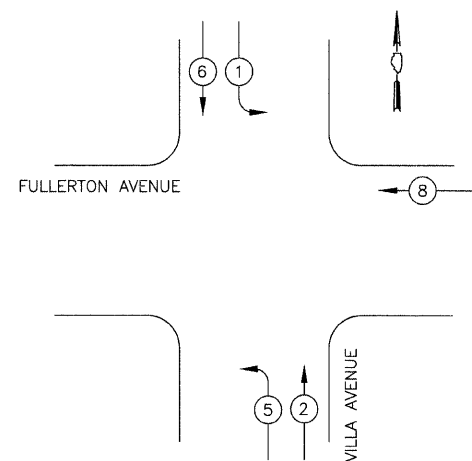
FALL REC.	SECTION	COUNTY	TOTAL SHEETS	SHEET NO.
1380	00-00084-00-PV	DUPAGE	93	39
STA.		TO STA.		
ILLINOIS		SURFACE TRANSPORTATION FUNDING		

CONTRACT NUMBER B3993

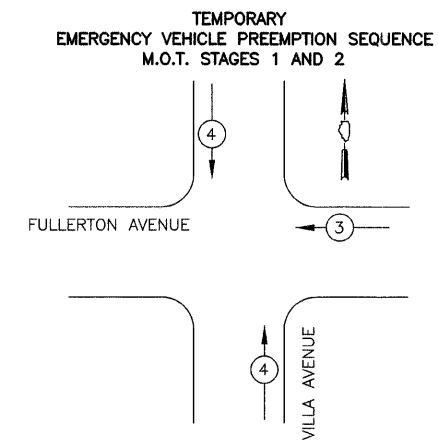
**TEMPORARY CABLE PLAN LEGEND**

- R TEMPORARY TRAFFIC SIGNAL SECTION OR PEDESTRIAN SIGNAL SECTION 12" (300mm)
- X CONTROLLER CABINET
- I SERVICE INSTALLATION
- ⑤ INDICATES NUMBER OF CONDUCTORS IN CABLE. ALL CONDUCTORS TO BE NUMBER 14 AWG WIRE UNLESS OTHERWISE NOTED
- ◀ CONFIRMATION BEACON
- ▶ EMERGENCY VEHICLE LIGHT DETECTOR
- VEHICLE DETECTOR, INDUCTION LOOP
- PEDESTRIAN PUSHBUTTON DETECTOR
- P 12" (300mm) PEDESTRIAN SIGNAL SECTION
- IMAGE SENSOR
- LUMINAIRE

**TEMPORARY CONTROLLER SEQUENCE M.O.T. STAGES 1 AND 2**



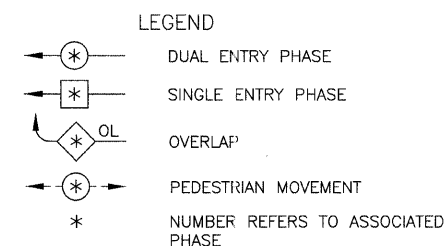
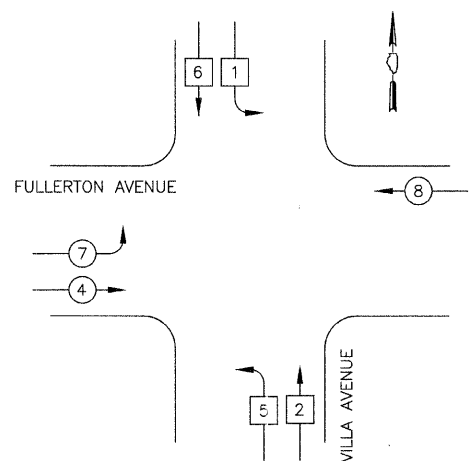
**TEMPORARY PHASE DESIGNATION DIAGRAM**



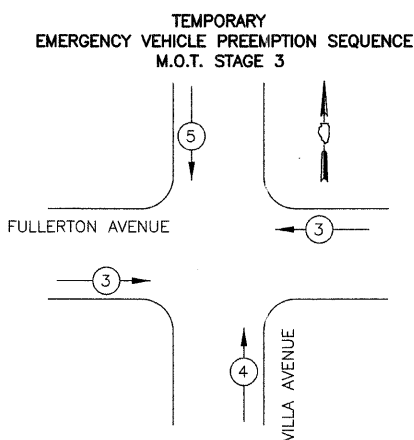
PROPOSED EMERGENCY VEHICLE PREEMPTORS

EMERGENCY VEHICLE PREEMPTOR	3	4
MOVEMENT	←	↑ ↓

**TEMPORARY CONTROLLER SEQUENCE M.O.T. STAGE 3**

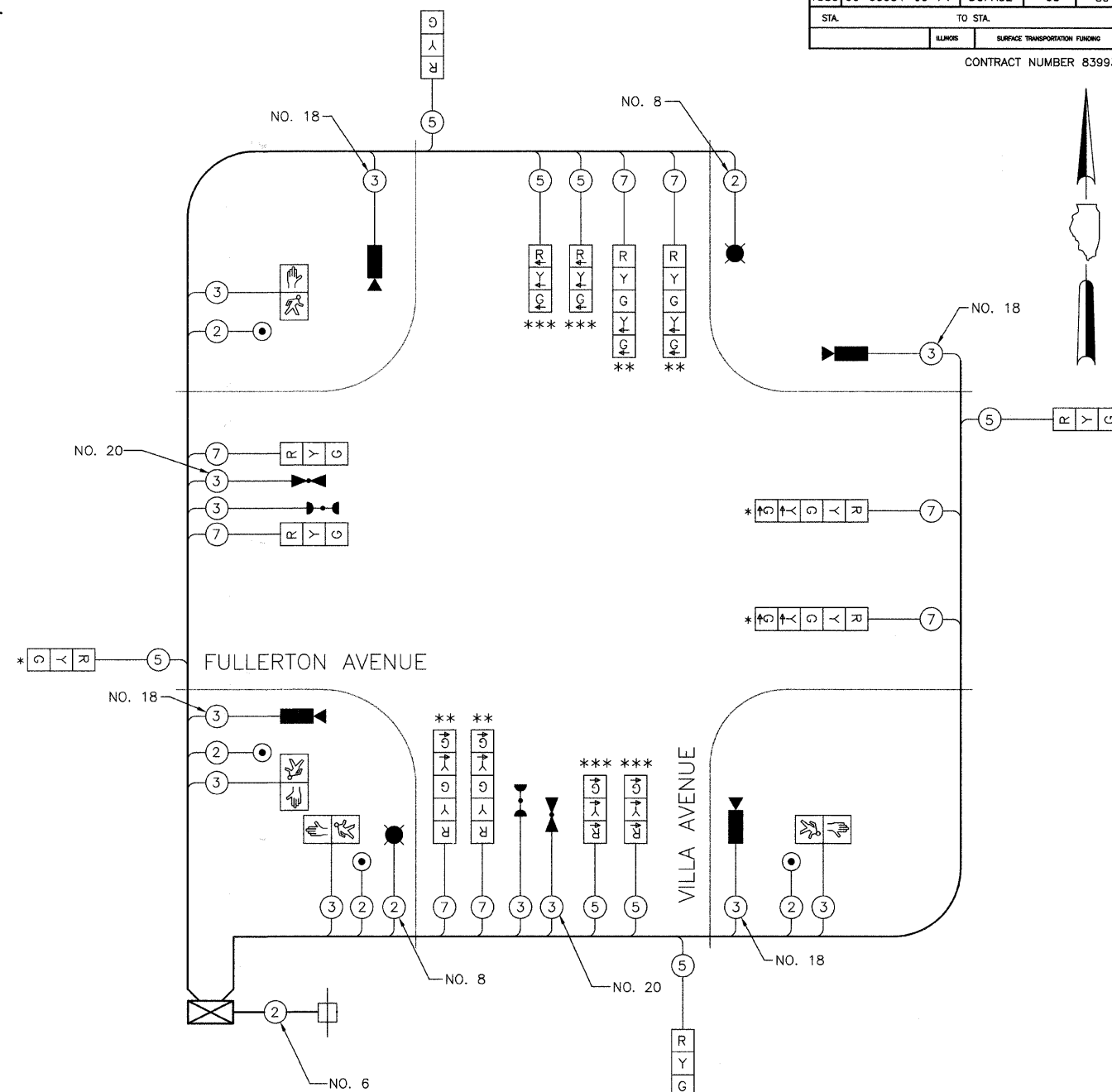


**TEMPORARY PHASE DESIGNATION DIAGRAM**



PROPOSED EMERGENCY VEHICLE PREEMPTORS

EMERGENCY VEHICLE PREEMPTOR	3	4	5
MOVEMENT	←	↑	↓



**TEMPORARY CABLE PLAN**  
NOT TO SCALE

- \* PRIOR TO M.O.T. STAGE 1, THE ARROW INDICATIONS ON THIS SIGNAL HEAD (IF APPLICABLE) SHALL BE BAGGED AND DISCONNECTED. DURING M.O.T. STAGES 1 AND 2, THE ENTIRE SIGNAL HEAD SHALL BE BAGGED AND DISCONNECTED.
- \*\* DURING M.O.T. STAGES 1 AND 2, THIS SIGNAL HEAD SHALL BE AS SHOWN. UPON COMPLETION OF M.O.T. STAGE 2, THE ARROW INDICATIONS ON THIS SIGNAL HEAD SHALL BE BAGGED AND DISCONNECTED.
- \*\*\* THESE SIGNAL HEADS SHALL BE INSTALLED PRIOR TO M.O.T. STAGE 3 AND SHALL BE ACTIVE ONLY DURING THAT STAGE.

DUPAGE COUNTY DIVISION OF TRANSPORTATION TRAFFIC SIGNAL INSTALLATION ELECTRICAL SERVICE REQUIREMENTS

TYPE	NO. LAMPSX	WATTAGE		% OPERATION	TOTAL WATTAGE
		INCAND.	LED		
SIGNAL (RED)	12	10	60		72
(YELLOW)	12	22	3		8
(GREEN)	12	12	37		53
RED ARROW	4	5	85		17
YELLOW ARROW	10	5	2		1
GREEN ARROW	10	5	13		7
PED. WALK	4	5	5		1
PED. DON'T WALK	4	6	95		23
CONTROLLER	1	100	100		100
DET. CAMERA	4	25	100		100
LUMINAIRE	2	400	50		400
TOTAL =					782

ENERGY COSTS TO: DUPAGE COUNTY DIVISION OF TRANSPORTATION  
421 NORTH COUNTY FARM ROAD  
WHEATON, ILLINOIS 60187

ENERGY SUPPLY: CONTACT: CURTIS TOPPS  
PHONE: (630) 691-4356  
COMPANY: COMMONWEALTH EDISON

REVISIONS

NAME	DATE

VILLAGE OF ADDISON

**TEMPORARY CABLE PLAN**  
FULLERTON AVENUE & VILLA AVENUE

SCALE: NOT TO SCALE

DATE: 11/26/2007  
DESIGNED BY: BRD  
TECHNICIAN: BRD  
CHECKED BY: JJE