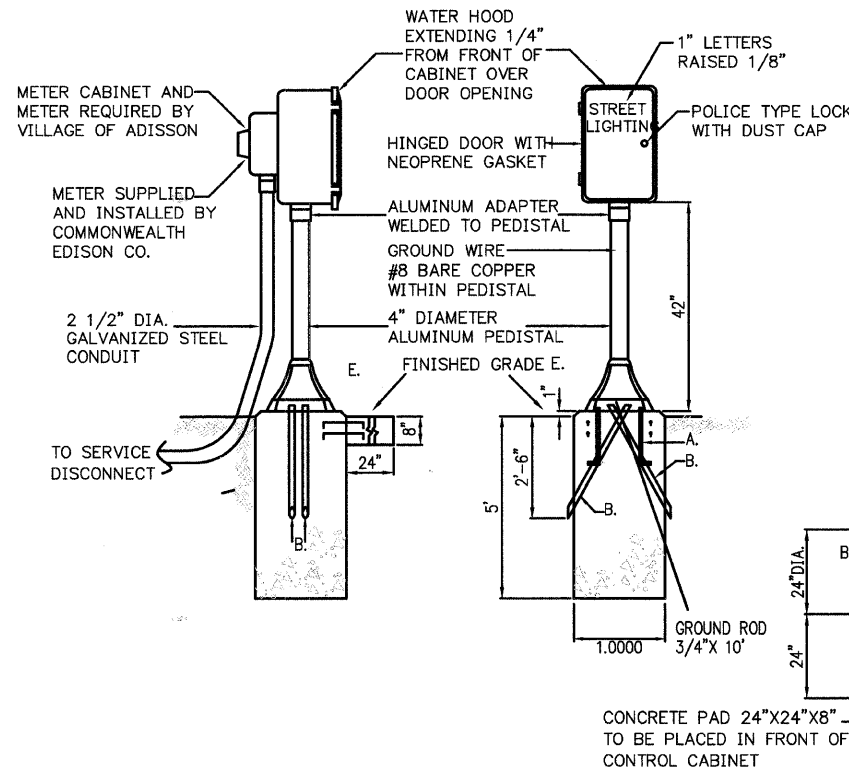


FILE NO.	SECTION	COUNTY	TOTAL SHEETS	SHEET NO.
1380	00-00084-00-PV	DUPAGE	93	62
STA.		TO STA.		
ELBOW		SURFACE TRANSPORTATION FUNDING		

CONTRACT NUMBER 83993



**NOTES:**

1. THE CONTROL CABINET SHALL BE OF CAST ALUMINUM WITH 1/4" THICK WALLS. THE MINIMUM DIMENSIONS SHALL BE: 21" WIDE, 32" HIGH, AND 12" DEEP, WITH 6 INTERNAL TAPPED MOUNTING BOSSES.
2. THE CONTROL CENTER FOUNDATION SHALL BE CLASS X CONCRETE. REINFORCING STEEL WILL NOT BE REQUIRED EXCEPT TO TIE IN THE SERVICE PAD.
3. CONTROL CABINET AND PEDESTAL SHALL HAVE A FACTORY APPLIED PAINT FINISH CONSISTING OF A BAKED PRIMER, FOLLOWED BY TWO COATS OF RUSTOLEUM INDUSTRIAL ENAMEL, HIGH GLOSS, CHESTNUT BROWN No. 977.
4. ALL CABLE OPENINGS IN THE PEDESTAL BASE SHALL BE SEALED WITH DUCT SEAL.

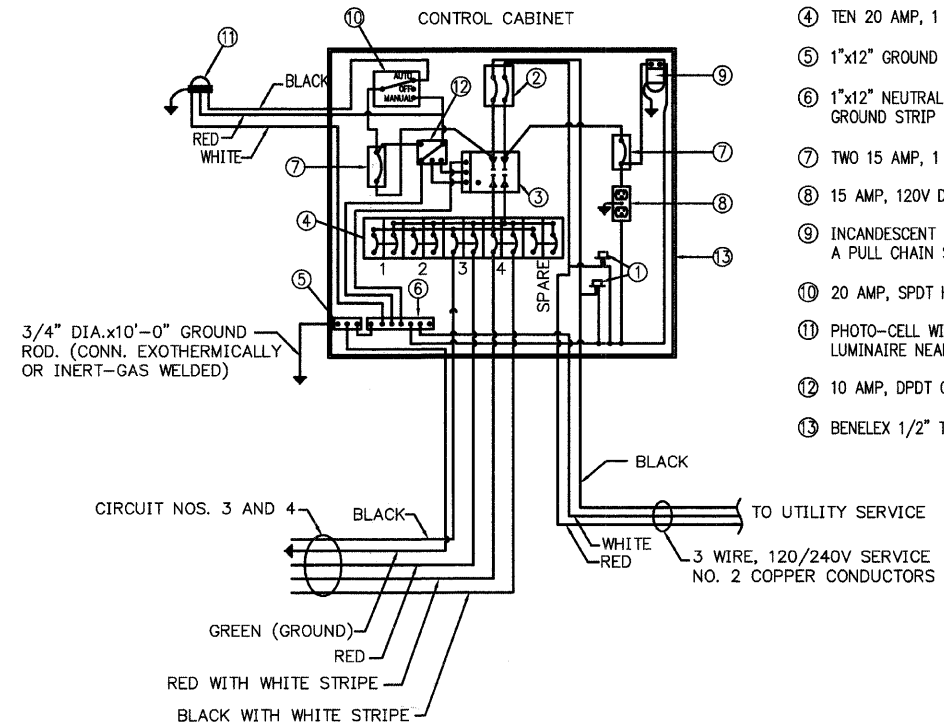
- A. ANCHOR BOLTS 3/4" X 12" GALVANIZED OR STAINLESS STEEL, THREADED 8NC FOR TOP 6", FURNISHED WITH 2 GALVANIZED FLAT WASHERS AND 2 GALVANIZED HEX NUTS
- B. LIGHTING CIRCUIT RACEWAY 2 1/2" DIA. MIN.
- C. DEFORMED TIE BARS
- E. ORNAMENTAL PEDESTAL BASE WITH HANDHOLE DOOR HELD IN PLACE WITH STAINLESS STEEL SCREWS, BASE TO BE WELDED TO PEDESTAL

**CONTROL CABINET AND FOUNDATION**  
NOT TO SCALE

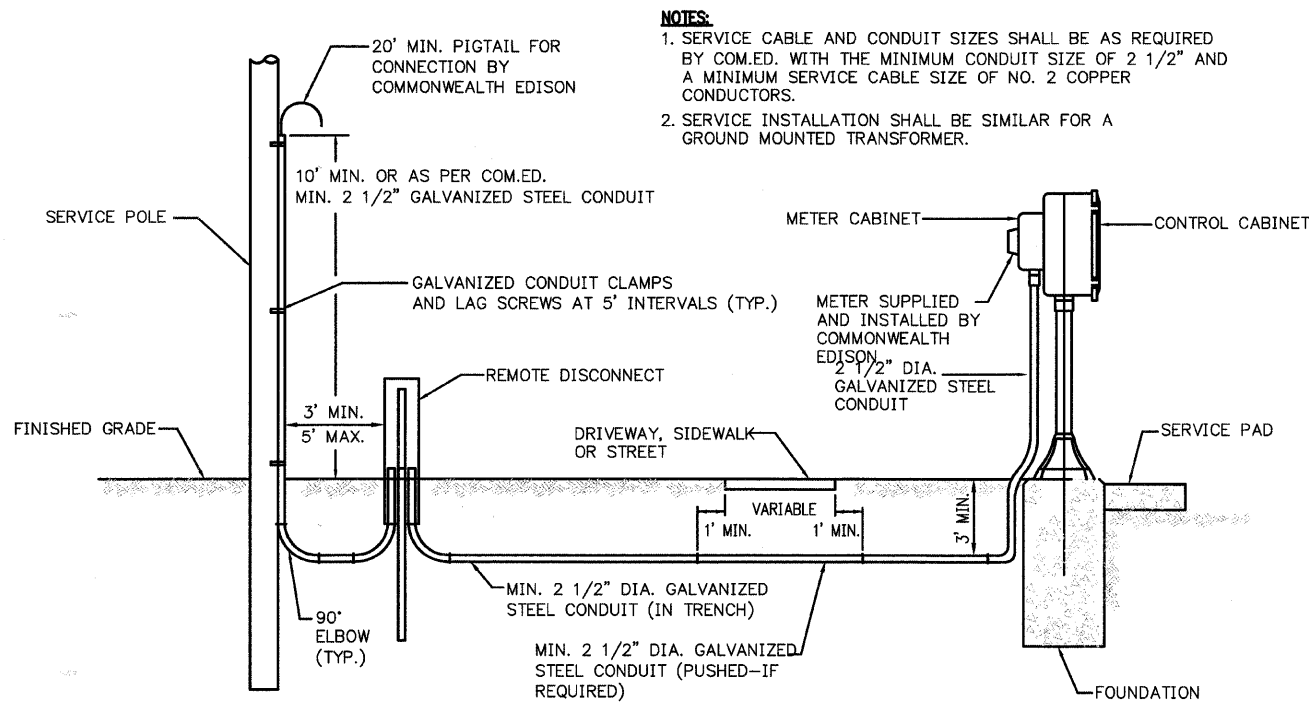
THIS DIAGRAM IS GENERAL IN NATURE. THE CONTRACTOR SHALL SUPPLY SHOP DRAWINGS AND CATALOG CUTS, FOR THE SPECIFIC EQUIPMENT TO BE USED, TO THE VILLAGE FOR THEIR APPROVAL PRIOR TO THE START OF CONSTRUCTION.

**LEGEND**

- ① TWO SURGE PROTECTORS
- ② 100 AMP, 2 POLE MAIN CIRCUIT BREAKER, 120V. (TYPE 'TEB')
- ③ 100 AMP, 2 POLE SINGLE THROW, ELECTRICALLY OPERATED AND MECHANICALLY HELD CONTACTOR, 120V.
- ④ TEN 20 AMP, 1 POLE CIRCUIT BREAKER, 120V. (TYPE 'TEB')
- ⑤ 1"x12" GROUND STRIP LABELED "GROUND"
- ⑥ 1"x12" NEUTRAL STRIP LABELED "NEUTRAL" AND JOINED TO THE GROUND STRIP WITH A BONDING JUMPER
- ⑦ TWO 15 AMP, 1 POLE CIRCUIT BREAKERS, 120V. (TYPE 'TEB')
- ⑧ 15 AMP, 120V DUPLEX OUTLET GFCI
- ⑨ INCANDESCENT LIGHTING FIXTURE WITH 120V 75 WATT BULB AND A PULL CHAIN SWITCH
- ⑩ 20 AMP, SPDT HOA SWITCH, 120V MOUNTED IN A 4"x4" BOX
- ⑪ PHOTO-CELL WITH 2 MINUTE TIME DELAY, 120V MOUNTED ON LUMINAIRE NEAREST CONTROLLER
- ⑫ 10 AMP, DPDT ON-DELAY PHOTO-CELL CONTROL RELAY
- ⑬ BENELEX 1/2" THICK PANEL BOARD



**CONTROLLER SCHEMATIC DIAGRAM**  
NOT TO SCALE



**NOTES:**

1. SERVICE CABLE AND CONDUIT SIZES SHALL BE AS REQUIRED BY COM.ED. WITH THE MINIMUM CONDUIT SIZE OF 2 1/2" AND A MINIMUM SERVICE CABLE SIZE OF NO. 2 COPPER CONDUCTORS.
2. SERVICE INSTALLATION SHALL BE SIMILAR FOR A GROUND MOUNTED TRANSFORMER.

**SERVICE INSTALLATION**  
NOT TO SCALE

VILLAGE OF ADDISON  
**LIGHTING CONTROLLER SCHEMATIC AND DETAILS**  
FULLERTON AVENUE  
SHEET 1 OF 1

REVISIONS	
NAME	DATE

DATE: 11/26/2007  
DESIGNED BY: FEI  
TECHNICIAN: FEI  
CHECKED BY: DEM