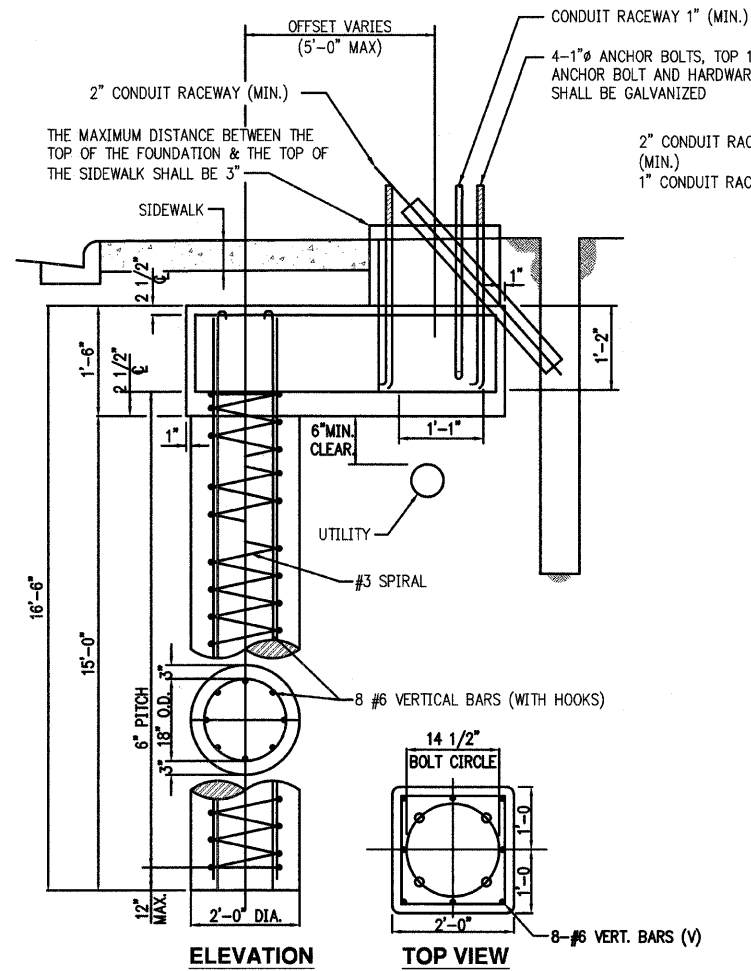
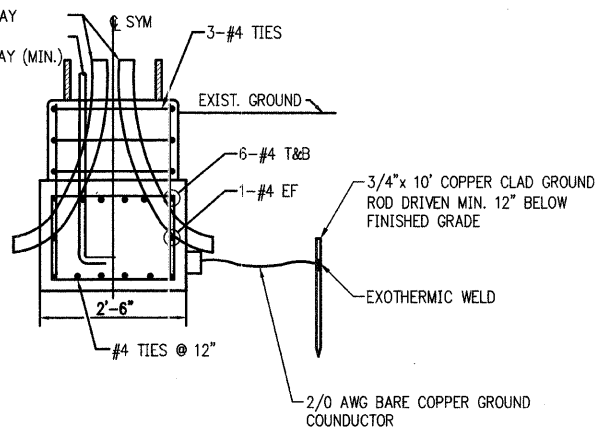


FILE NO.	SECTION	COUNTY	TOTAL SHEETS	SHEET NO.
1380	00-00084-00-PV	DUPAGE	93	65
STA.	TO STA.			
	ILLINOIS	SURFACE TRANSPORTATION FUNDING		

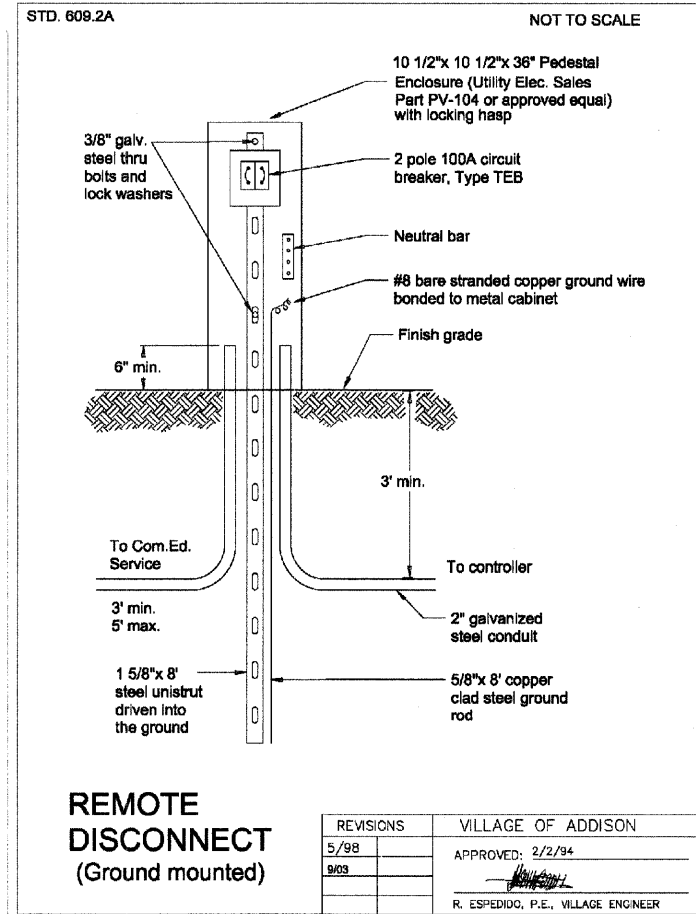
CONTRACT NUMBER 83993



OFFSET POLE FOUNDATION
NOT TO SCALE



- NOTES:
1. EACH ANCHOR BOLT SHALL BE FURNISHED WITH (2) FLAT WASHERS AND (2) HEX NUTS. THEY SHALL BE EITHER GALVANIZED OR STAINLESS STEEL TO MATCH THE ANCHOR BOLTS.
 2. RACEWAYS SHALL BE INSTALLED PARALLEL TO THE EDGE OF PAVEMENT.
 3. ANCHOR BOLTS, RACEWAYS, AND REINFORCING STEEL SHALL BE SECURED IN PLACE BEFORE THE CONCRETE IS PLACED IN THE FORM.
 4. CONCRETE SHALL BE AN IDOT CLASS SI MIX, WITH A MINIMUM STRENGTH OF 3500 PSI.
 5. THE CONCRETE SHALL CURE FOR A MINIMUM OF 10 DAYS BEFORE ERECTING THE LIGHT POLE.
 6. THE CABLE TRENCH SHALL BE BACKFILLED AND FIRMLY COMPACTED BEFORE ERECTING THE LIGHT POLE.
 7. ANCHOR BOLTS SHALL PROJECT A MINIMUM OF 2" AND A MAXIMUM OF 4" ABOVE THE TOP OF THE FOUNDATION.
 8. RACEWAYS SHALL PROJECT 1" ABOVE THE TOP OF THE FOUNDATION.
 9. ALL GROUND ROD CONNECTIONS SHALL BE MADE BELOW GRADE, 12" MIN. BURY, WITH EXOTHERMIC OF INERT GAS WELDS.
 10. ANCHOR BOLT DIMENSIONS TO BE VERIFIED WITH POLE MANUFACTURER AND COORDINATED WITH FOUNDATION DESIGN.
 11. FOUNDATION DESIGN PREPARED FOR 40' TALL LIGHT POLE WITH MAST ARM AS DETAILED ON PLAN SHEET 411 AND QUALITY LIGHTING #SD-1-1327-FX2 LUMINAIRE.
 12. DESIGN PREPARED BASED ON SOFT CLAY SOIL TYPE.



REMOTE DISCONNECT
(Ground mounted)

REVISIONS	VILLAGE OF ADDISON
5/98	APPROVED: 2/2/94
9/03	
	R. ESPEDIGO, P.E., VILLAGE ENGINEER

REVISIONS	
NAME	DATE

VILLAGE OF ADDISON

ELECTRICAL DETAIL SHEET

FULLERTON AVENUE

SHEET 3 OF 3

DATE: 11/26/2007
DESIGNED BY: FEI
TECHNICIAN: FEI
CHECKED BY: DEM