

F.A.U. RTE.	SECTION	COUNTY	TOTAL SHEETS	SHEET NO.
2588	06-00056-00-FP	DUPAGE	26	1

CONTRACT NO. 83995

STATE OF ILLINOIS  
DEPARTMENT OF TRANSPORTATION  
DIVISION OF HIGHWAYS

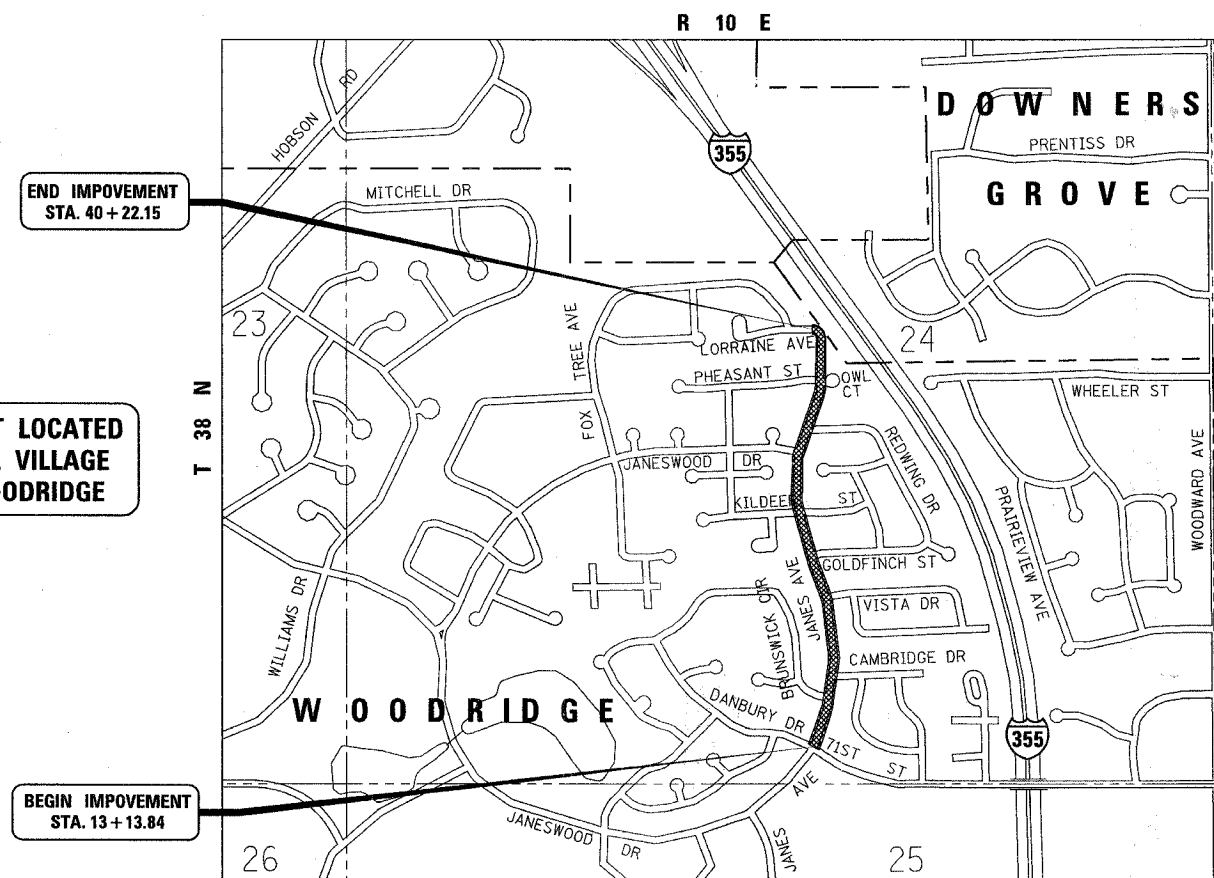
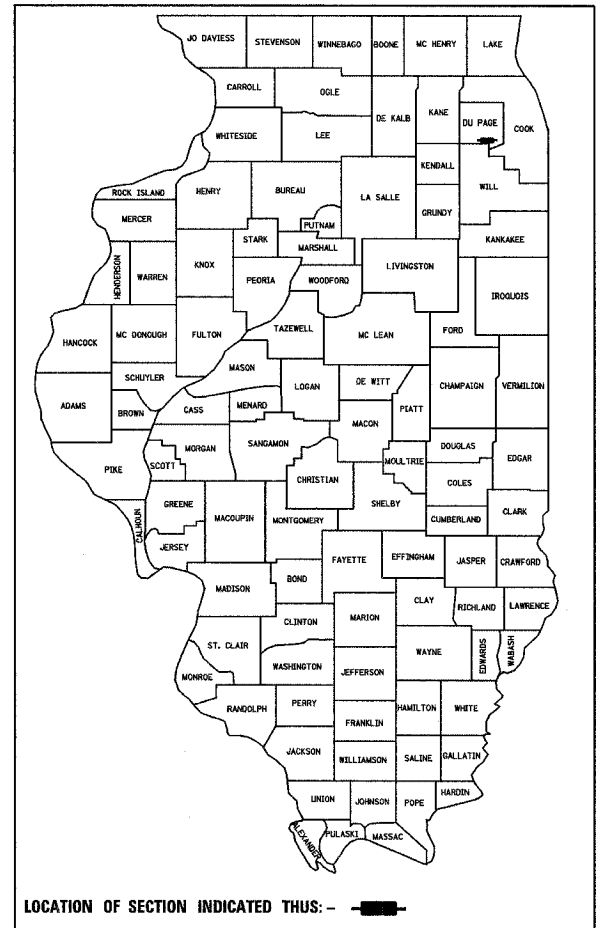
# PLANS FOR PROPOSED FEDERAL AID HIGHWAY

FAU ROUTE 2588 (JANES AVENUE)  
SECTION NO. 06-00056-00-FP  
71ST STREET TO LORRAINE AVENUE  
PAVEMENT REHABILITATION AND RESURFACING  
VILLAGE OF WOODRIDGE  
PROJECT NO. M-8003(868)  
DUPAGE COUNTY  
JOB NO. C-91-024-08

## INDEX OF SHEETS

SHEET NO.	DESCRIPTION
1	TITLE & INDEX OF SHEETS
2	GENERAL NOTES AND STANDARDS
3	SCHEDULE OF QUANTITIES
4	TYPICAL SECTIONS
5-6	MAINTENANCE OF TRAFFIC
7-8	PROPOSED PLAN AND PROFILE
9	INTERSECTION DETAILS
10-11	DRAINAGE AND UTILITY PLANS
12-13	PAVEMENT MARKING AND LANDSCAPING PLANS
14-23	DISTRICT ONE DETAILS
24-26	CROSS SECTIONS

HIGHWAY STANDARDS SEE SHEET 2.



PROJECT LOCATED  
IN THE VILLAGE  
OF WOODRIDGE

BEGIN IMPROVEMENT  
STA. 13+13.84

END IMPROVEMENT  
STA. 40+22.15

TRAFFIC DATA  
4500 (2030)

DESIGN DESIGNATION  
360 (30) LOCAL ROAD  
0.3 (FD-20)



DATE: 11/28/2007  
EXPIRES: 11/30/2009

STATE OF ILLINOIS  
DEPARTMENT OF TRANSPORTATION  
DIVISION OF HIGHWAYS

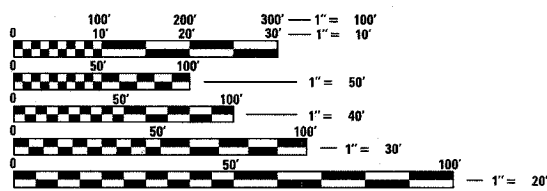
Approved November 29, 2007  
*Zill A. Khan*  
VILLAGE OF WOODRIDGE, VILLAGE ENGINEER

Passed DECEMBER 21, 2007  
*[Signature]*  
DISTRICT #1 ENGINEER OF LOCAL ROADS AND STREETS

Released for Bid  
Based on Limited  
Review Dec 24, 2007  
*[Signature]*  
DEPUTY DIRECTOR OF HIGHWAYS, REGION #1 ENGINEER

**PRINTED BY THE AUTHORITY  
OF THE STATE OF ILLINOIS**

PLANS PREPARED BY:  
**URS** 100 S. WACKER DR., SUITE 500 TEL (312)-939-1000  
CHICAGO IL, 60606 FAX (312)-939-4198



FULL SIZE PLANS HAVE BEEN PREPARED USING STANDARD ENGINEERING SCALES. REDUCED SIZED PLANS WILL NOT CONFORM TO STANDARD SCALES. IN MAKING MEASUREMENTS ON REDUCED PLANS, THE ABOVE SCALES MAY BE USED.

J.U.L.I.E.  
JOINT UTILITY LOCATION INFORMATION FOR EXCAVATION  
1-800-892-0123

CONTRACT NO. 83995

LOCATION MAP  
(NOT TO SCALE)

GROSS LENGTH AND NET LENGTH = 2,708.31 FEET (0.51 MILES)

FIELD ENGINEER, KARL L. SOLIMON - (847) 705-4407