

NOTES:

1. THE ACTUAL LOCATION AND QUANTITY OF CURB AND GUTTER REMOVAL AND REPLACEMENT, SIDEWALK REMOVAL AND REPLACEMENT, AND PAVEMENT PATCHING WILL BE DETERMINED IN THE FIELD, DURING CONSTRUCTION, BY THE RESIDENT ENGINEER.

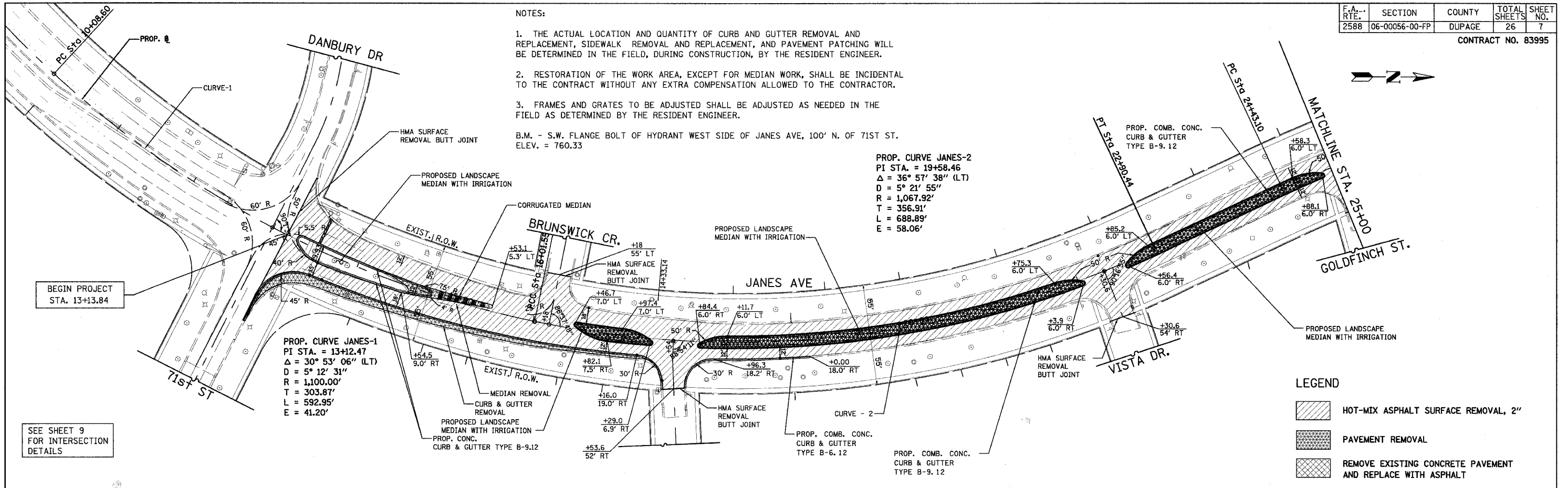
2. RESTORATION OF THE WORK AREA, EXCEPT FOR MEDIAN WORK, SHALL BE INCIDENTAL TO THE CONTRACT WITHOUT ANY EXTRA COMPENSATION ALLOWED TO THE CONTRACTOR.

3. FRAMES AND GRATES TO BE ADJUSTED SHALL BE ADJUSTED AS NEEDED IN THE FIELD AS DETERMINED BY THE RESIDENT ENGINEER.

B.M. - S.W. FLANGE BOLT OF HYDRANT WEST SIDE OF JANES AVE, 100' N. OF 71ST ST.  
ELEV. = 760.33

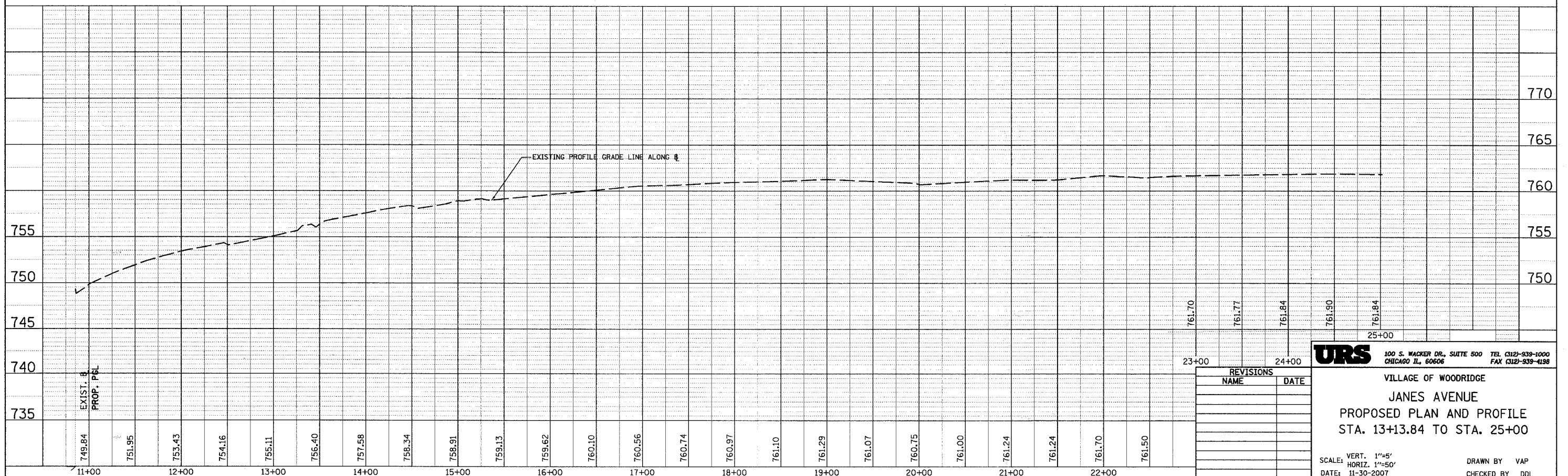
PROP. CURVE JANES-2  
PI STA. = 19+58.46  
 $\Delta = 36^\circ 57' 38''$  (LT)  
 $D = 5^\circ 21' 55''$   
 $R = 1,067.92'$   
 $T = 356.91'$   
 $L = 688.89'$   
 $E = 58.06'$

PROP. CURVE JANES-1  
PI STA. = 13+12.47  
 $\Delta = 30^\circ 53' 06''$  (LT)  
 $D = 5^\circ 12' 31''$   
 $R = 1,100.00'$   
 $T = 303.87'$   
 $L = 592.95'$   
 $E = 41.20'$



LEGEND

- HOT-MIX ASPHALT SURFACE REMOVAL, 2"
- PAVEMENT REMOVAL
- REMOVE EXISTING CONCRETE PAVEMENT AND REPLACE WITH ASPHALT



| REVISIONS |      |
|-----------|------|
| NAME      | DATE |
|           |      |
|           |      |
|           |      |
|           |      |
|           |      |

**URS** 100 S. WACKER DR., SUITE 500 TEL (312) 939-1000  
CHICAGO IL, 60606 FAX (312) 939-4198

VILLAGE OF WOODRIDGE  
JANES AVENUE  
PROPOSED PLAN AND PROFILE  
STA. 13+13.84 TO STA. 25+00

SCALE: VERT. 1"=5'  
HORIZ. 1"=50'  
DATE: 11-30-2007

DRAWN BY VAP  
CHECKED BY DDL