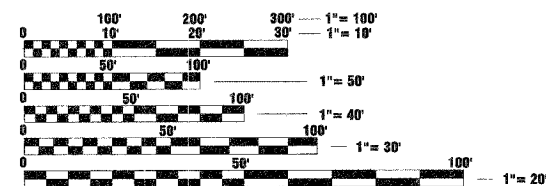


FOR INDEX OF SHEETS, SEE SHEET NO. 2

FOR LIST OF STATE AND LOCAL STANDARDS, SEE SHEET NO. 2

PROJECT LOCATED WITHIN THE VILLAGE OF BURR RIDGE

TRAFFIC DATA - 83RD STREET
POSTED SPEED: 30MPH
DESIGN SPEED: 30MPH
CURRENT ADT (2005): 4,420 VPD



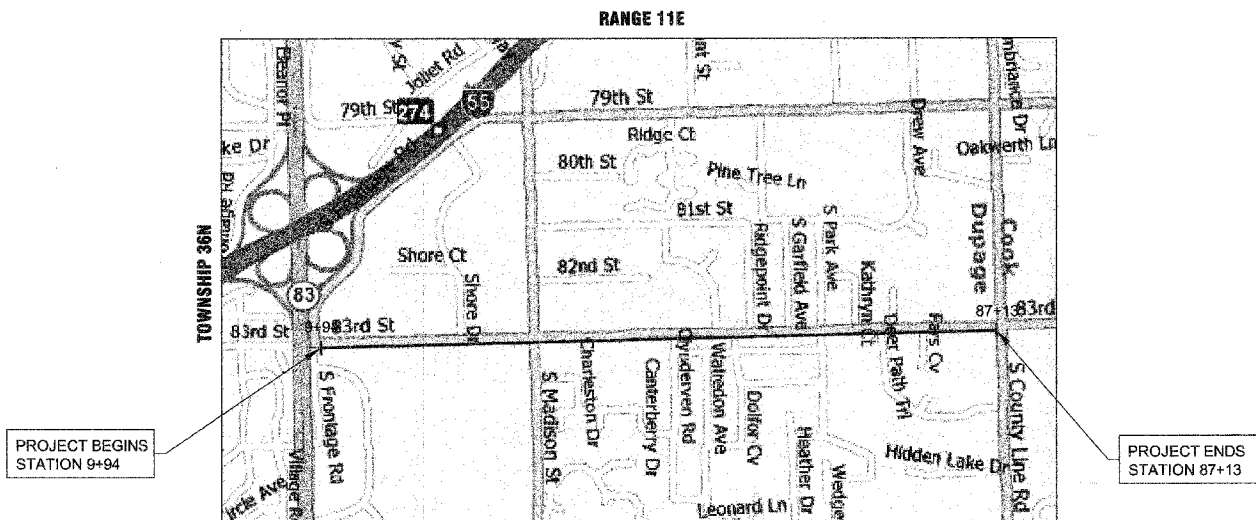
FULL SIZE PLANS HAVE BEEN PREPARED USING STANDARD ENGINEERING SCALES. REDUCED SIZED PLANS WILL NOT CONFORM TO STANDARD SCALES. IN MAKING MEASUREMENTS ON REDUCED PLANS, THE ABOVE SCALES MAY BE USED.

J.U.L.I.E.
JOINT UTILITY LOCATION INFORMATION FOR EXCAVATION
1-800-892-0123
OR 811

FIELD ENGINEER: MARLIN SOLOMON 847-705-4407

CONTRACT NO. 83996

STATE OF ILLINOIS
DEPARTMENT OF TRANSPORTATION
DIVISION OF HIGHWAYS
**PLANS FOR PROPOSED
FEDERAL AID HIGHWAY**
FAU RTE. 1552 (83rd STREET)
SECTION NO.: 07-00037-00-SW
SOUTH FRONTAGE ROAD TO COUNTY LINE ROAD (FAU 2684)
SIDEWALK CONSTRUCTION
PROJECT NO.: M-8003 (930)
DUPAGE COUNTY
C-91-112-08



LOCATION MAP

SCALE: 1" = 1000 MILES

TOWNSHIP: 36 NORTH
RANGE: 11 EAST

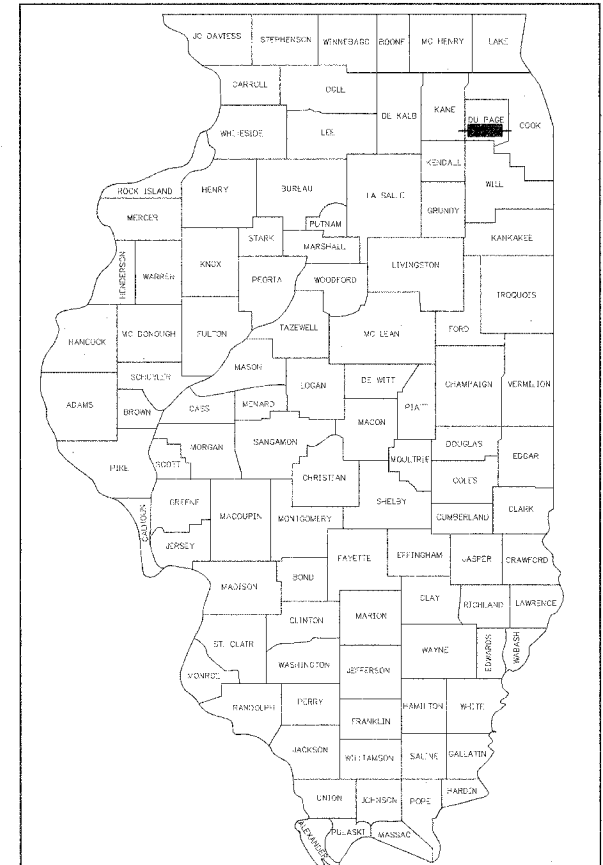
GROSS LENGTH OF PROJECT = 7,736 LINEAL FEET (1.47 MILES)
NET LENGTH OF PROJECT = 7,736 LINEAL FEET (1.47 MILES)

IL DESIGN FIRM
NO. 184-001310



EXP. 04/30/09

F.A.U. RTE.	SECTION	COUNTY	TOTAL SHEETS	SHEET NO.
1552	07-00037-00-SW	DUPAGE	17	1
FED. ROAD DIST. NO. 1		ILLINOIS	CONTRACT NO. 83996	



LOCATION OF SECTION INDICATED THUS: -

STATE OF ILLINOIS
DEPARTMENT OF TRANSPORTATION
DIVISION OF HIGHWAYS

Approved DEC 19 20 07

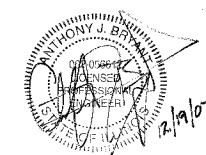
PAUL D. MAY, P.E.
VILLAGE OF BURR RIDGE, VILLAGE ENGINEER

Passed DECEMBER 21 2007

CHRISTOPHER HOLT
DISTRICT 1 ENGINEER OF LOCAL ROADS AND STREETS

Relinquishing for Bid
Based on Limited
Review

Dec 24 20 07
DUKE OLL
DEPUTY DIRECTOR OF HIGHWAYS, REGION 1 ENGINEER



ANTHONY J. BRYANT, P.E. ENGINEER
ILLINOIS REGISTRATION No. 062-056612
EXPIRATION DATE: 11/30/2009
APPLIES TO SHEETS 1-17

PRINTED BY THE AUTHORITY OF THE STATE OF ILLINOIS