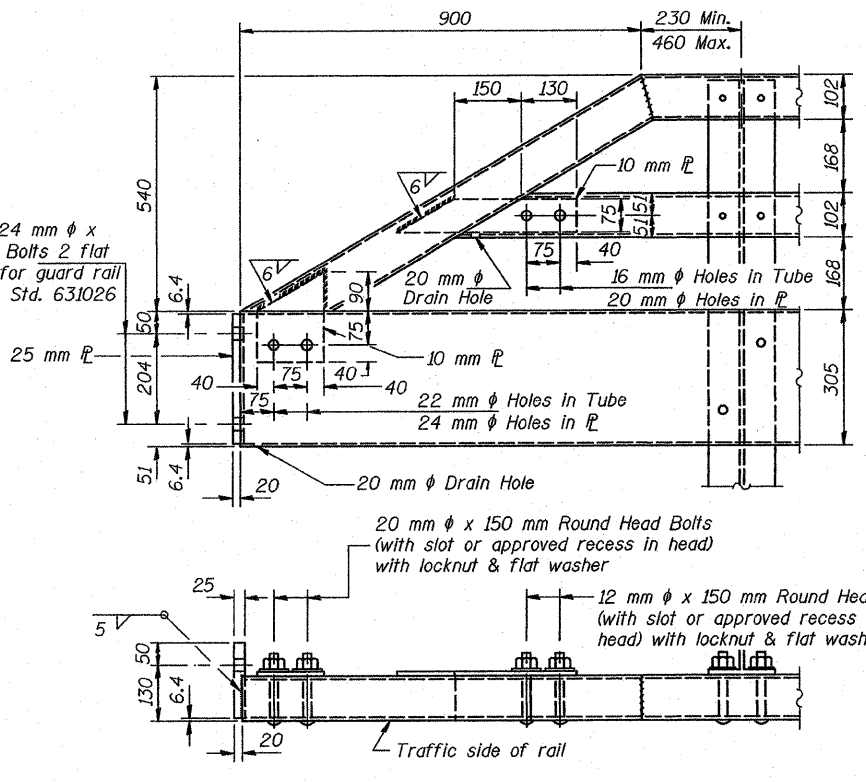
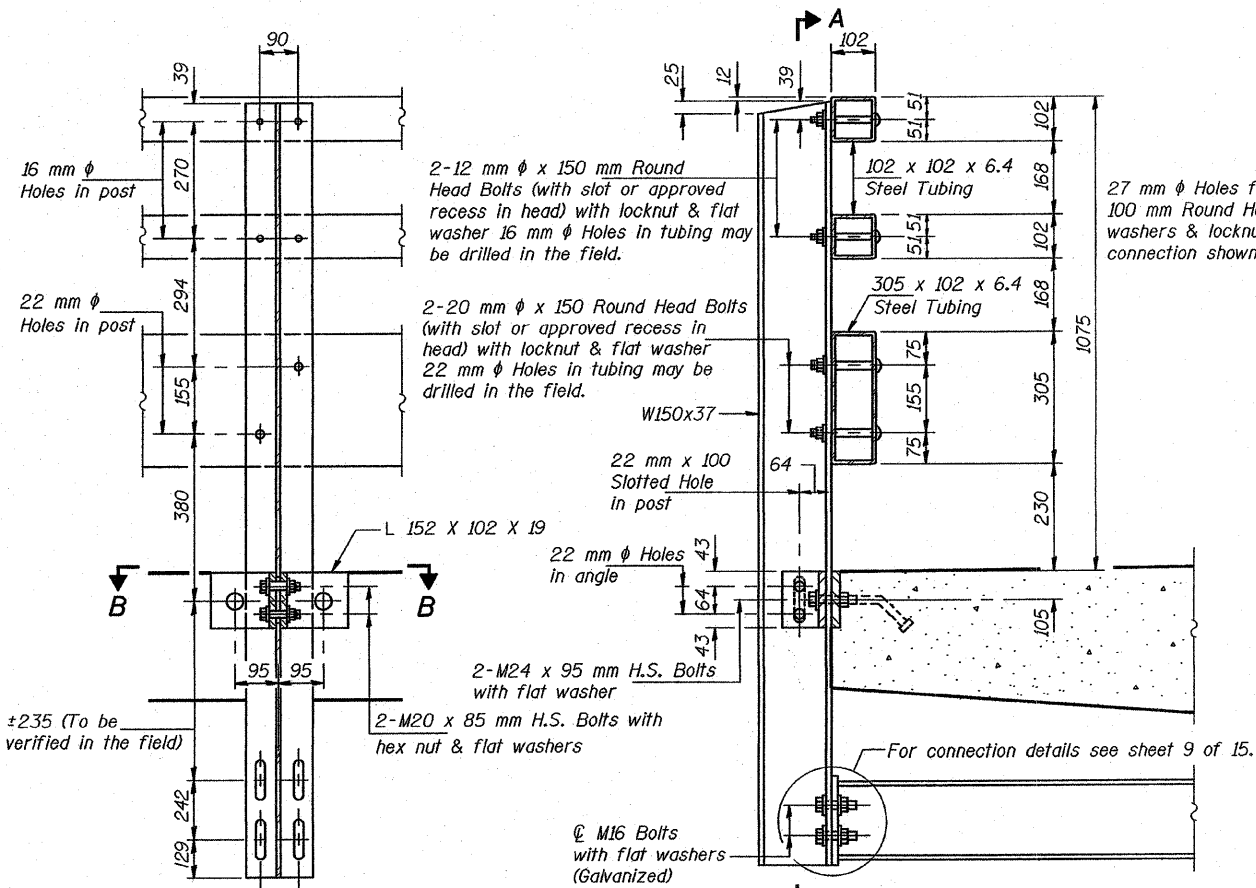
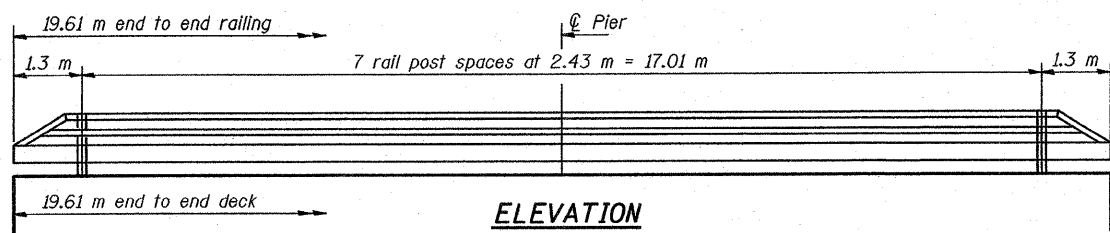
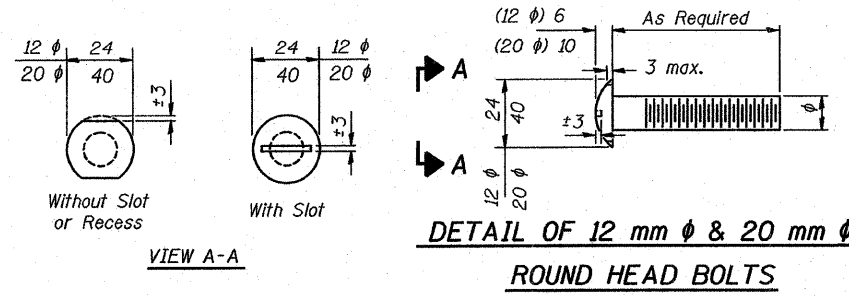


ROUTE NO.	SECTION	COUNTY	TOTAL SHEETS	SHEET NO.	SHEET NO. 10 14 SHEETS
FAS 204	*	ROCK ISLAND	31	18	
FED. ROAD DIST. NO. 7	ILLINOIS	FED. AID PROJECT			

92-00297-00-BR

STATE OF ILLINOIS
DEPARTMENT OF TRANSPORTATION



NOTES

All bolts, nuts, cap screws, washers and lock washers shall be galvanized according to AASHTO M 232.

All posts, railing, rail splices, anchor devices and angles shall be galvanized after shop fabrication according to AASHTO M 111 and ASTM A 385. Galvanized rail shall not be painted.

Railing shall be according to Section 509 of the Standard Specifications, except as noted, and will be paid for at the contract unit price per meter for STEEL RAILING, TYPE TP-1 (SPECIAL).

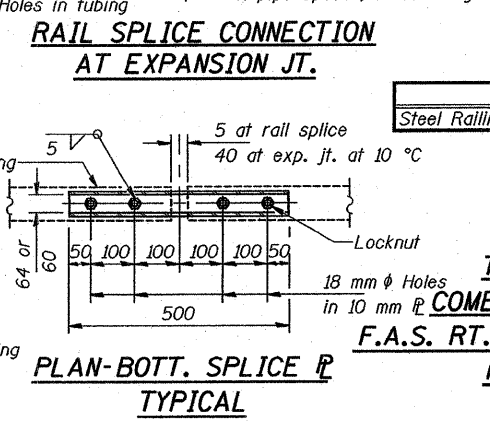
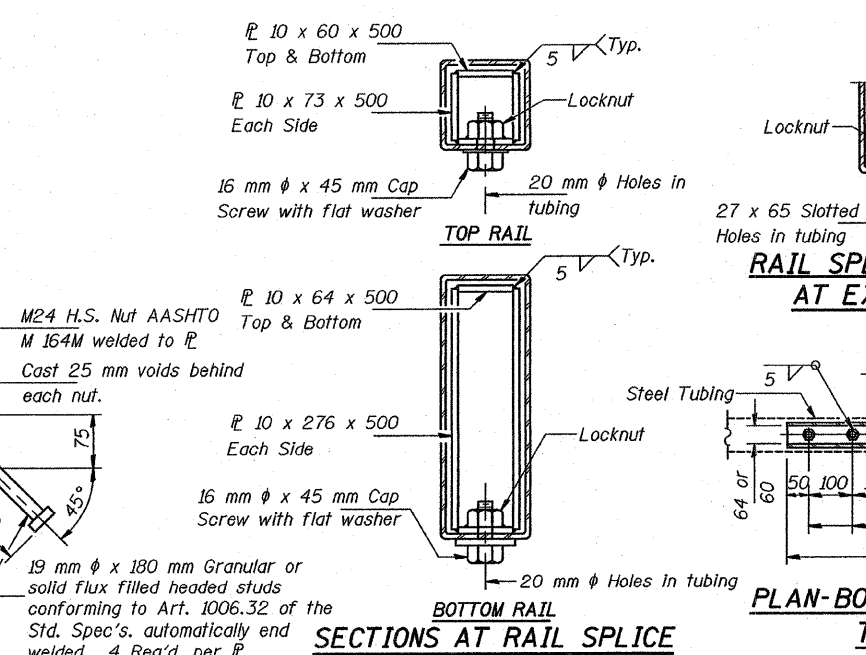
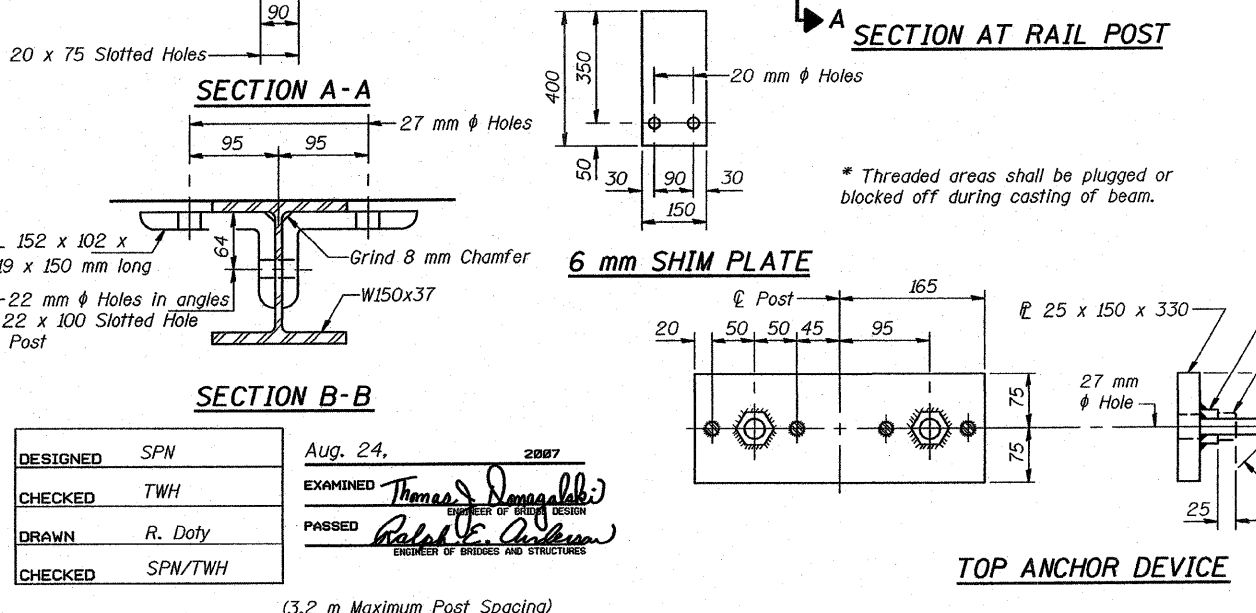
All field drilled holes shall be coated with an approved zinc rich paint before erection.

The lower portion of the post flange in contact with concrete shall receive two coats of asphalt paint conforming to Section 1060.07 Type II or place 3 mm fabric bearing pad between the post and concrete.

The M20 high strength bolts used to connect the 152 x 102 x 19 angles to the post shall be tightened according to Article 505.04(f)(3) of the Standard Specifications. The M24 high strength bolts connecting the angles to the concrete shall be tightened to a snug fit and given an additional 1/8 turn. The 16 mm ϕ cap screws in bottom of posts shall be tightened to a snug fit only.

For multi-span bridges, sufficient 6 x 150 x 400 galvanized steel shims shall be provided to align rail between adjacent spans. Cost included with Steel Railing.

All dimensions are in millimeters (mm) except as noted.



BILL OF MATERIAL

Item	Unit	Quantity
Steel Railing, Type TP-1 (Special)	m	40

**TYPE TP-1 (SPECIAL)
COMBINATION STEEL RAILING**
F.A.S. RT. 204 SEC. 92-00297-00-BR
ROCK ISLAND COUNTY
STA. 0+304.801

DESIGNED	SPN	Aug. 24, 2007
CHECKED	TWH	EXAMINED <i>Thomas J. Damgalab</i>
DRAWN	R. Doty	PASSED <i>Robert V. Anderson</i>
CHECKED	SPN/TWH	ENGINEER OF BRIDGES AND STRUCTURES

(3.2 m Maximum Post Spacing)