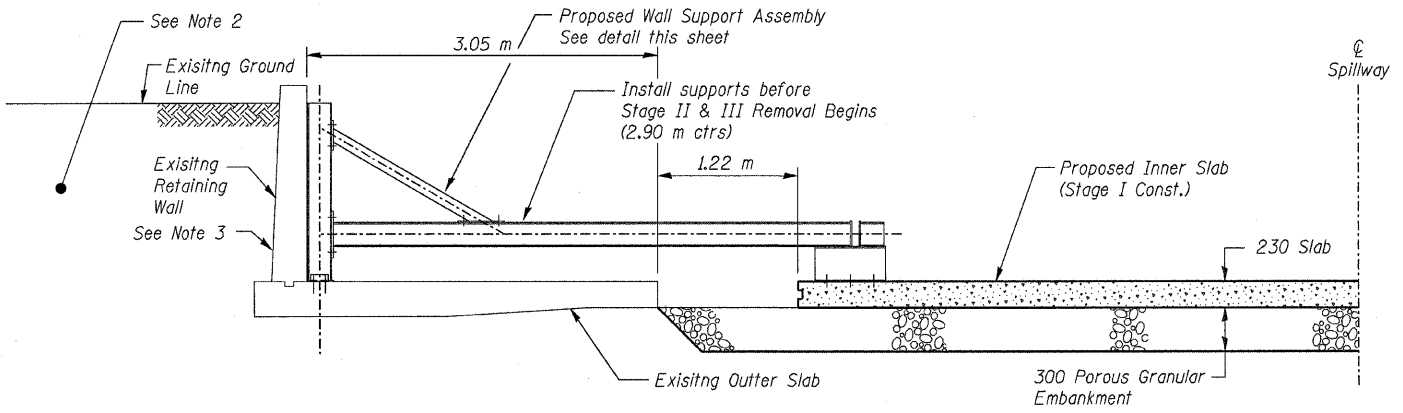
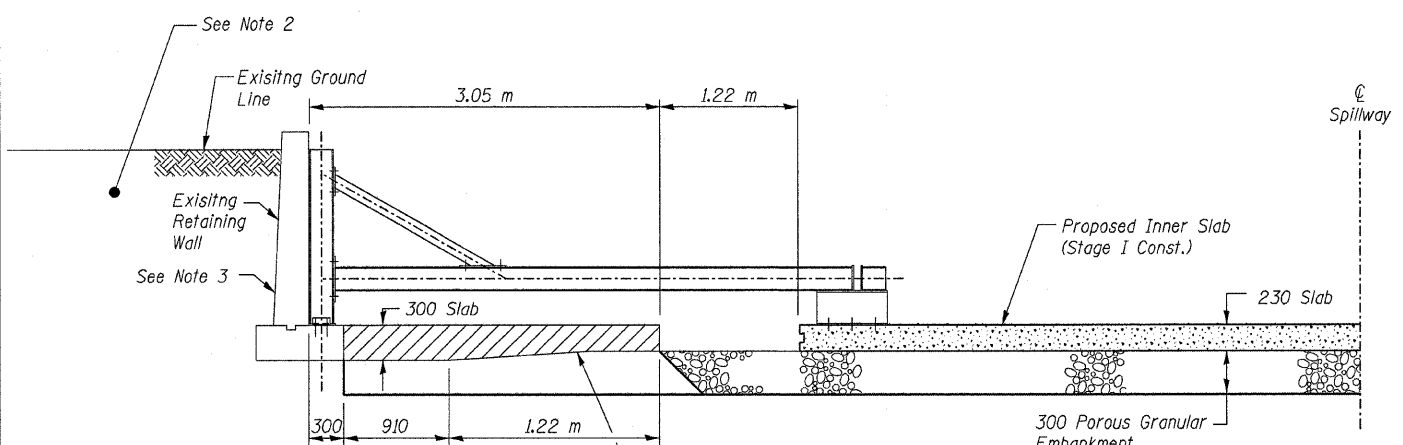


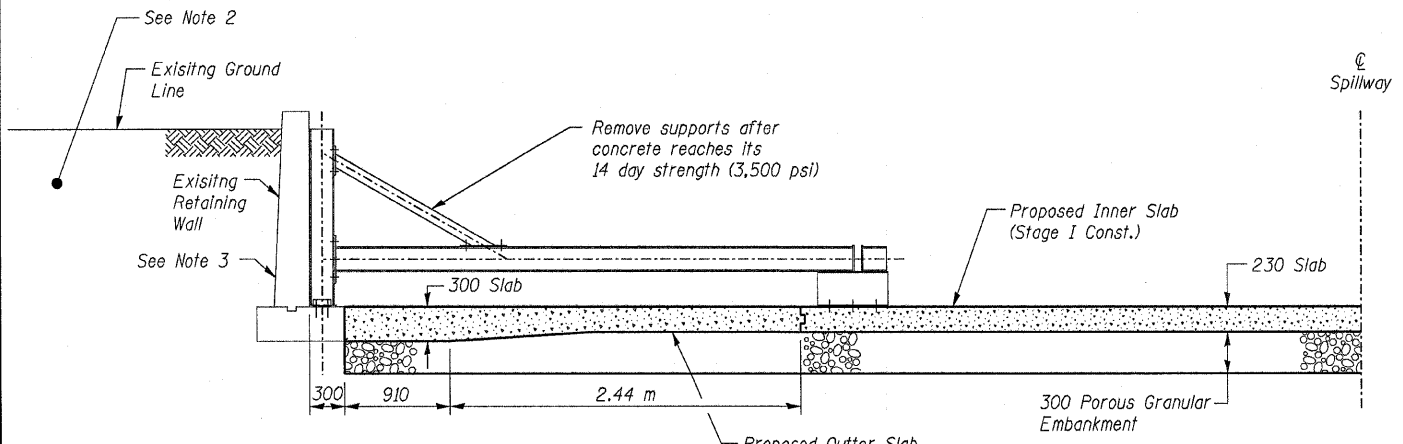
F.A. RTE.	SECTION	COUNTY	TOTAL SHEETS	SHEET NO.
204	92-00297-00-BR	ROCK ISLAND	31	31
STA. 0+270		TO STA. 0+340		
FED. ROAD DIST. NO. 7		ILLINOIS FED. AID PROJECT		



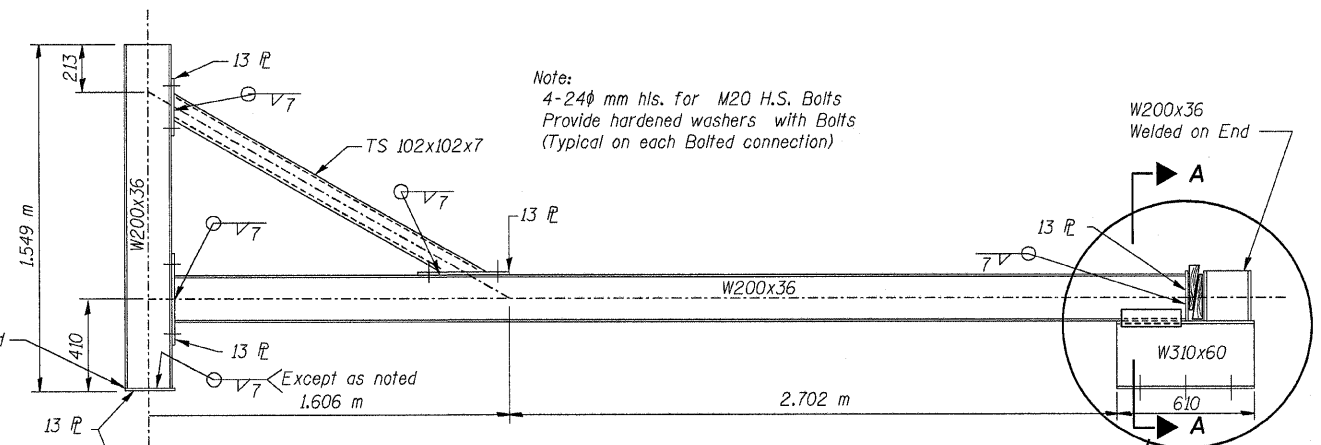
STAGE I CONSTRUCTION COMPLETED



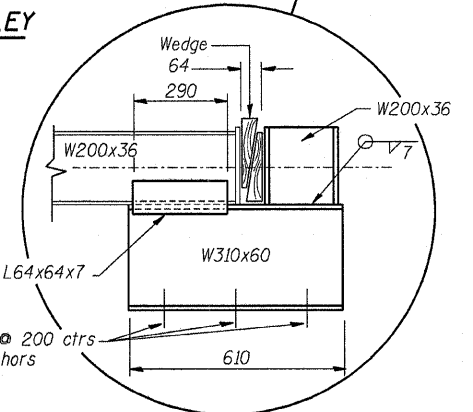
TYPICAL STAGE II REMOVAL
(Stage III Similar)



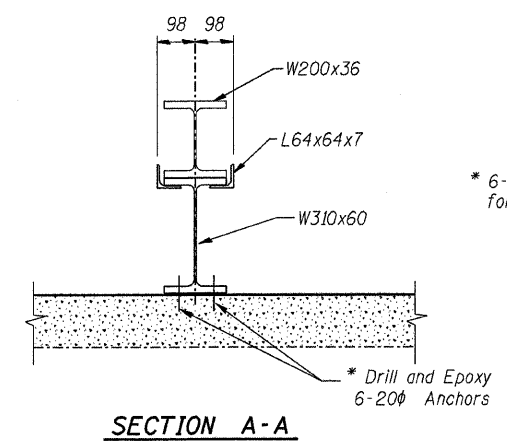
STAGE II CONSTRUCTION COMPLETED
(Stage III Similar)



WALL SUPPORT ASSEMBLY



ANCHOR ASSEMBLY DETAIL



SECTION A-A

* All anchors shall be cut or burned off flush w/slab, after support assemblies are removed.

General Notes:

1. Furnishing, Erecting, Relocating & Removal from the project site of the Temporary Wall Support Assemblies shall be included in the contract unit price per lump sum from Furnishing & Erecting Structure Steel, which price shall include all labor & materials required to complete the work. Calculated weight of Structural Steel = AASHTO M270M, Grade 250 = 3,860 kg.
2. Spillway Slab Repair shall be completed before earth excavation may begin behind walls.
3. Provide Shims for uniform bearing on spillway wall. Included in cost of supports.

REVISIONS	
NAME	DATE

ILLINOIS DEPARTMENT OF TRANSPORTATION
**TEMPORARY WALL SUPPORT
 DETAILS FOR CONSTRUCTION**
 C.H. 59 OVER
 LAKE GEORGE SPILLWAY
 ROCK ISLAND, COUNTY
 DRAWN BY RAP
 CHECKED BY JBF
 DATE JAN. 2008