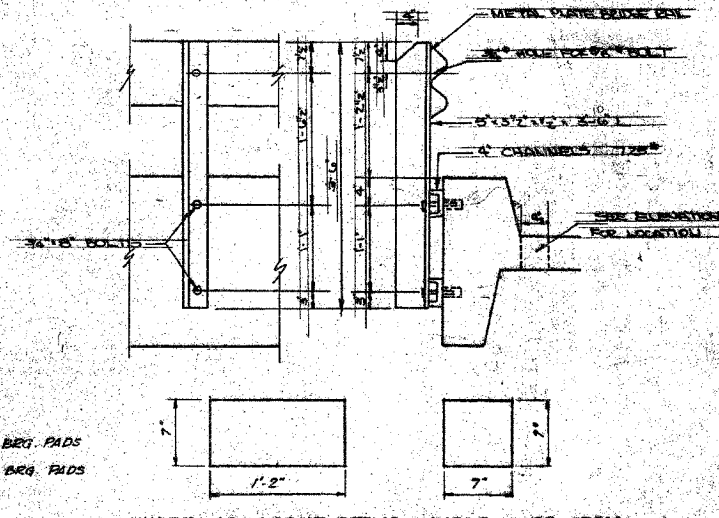
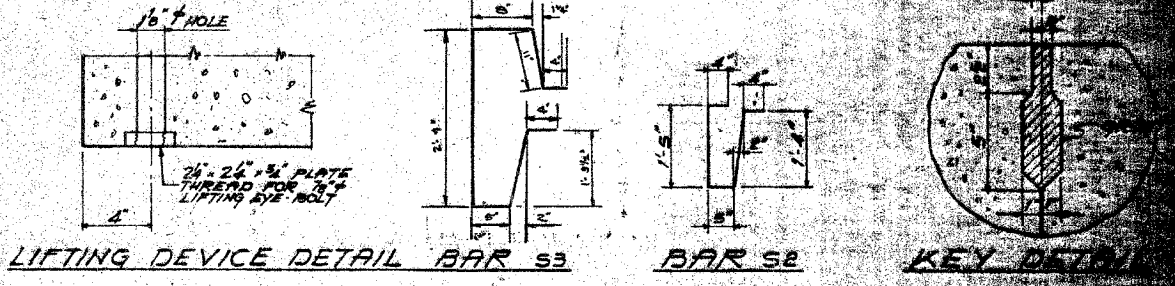
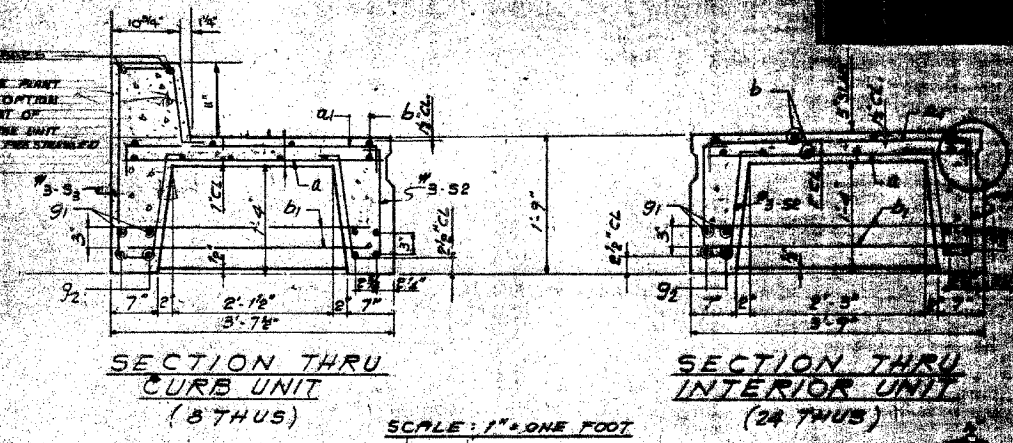


HALF SECTION SCALE 1/2" = 1'-0"
HALF END ELEVATION

NOTE: CURB TO BE SET IN THE FRONT OR REAR ASBESTY THE OPTION OF THE CONTRACTOR. THE COST OF SUCH WORK SHALL BE THE UNIT PRICE IN THE UNIT FOR STABLE BRIDGE SLAB.



UNDER ADJACENT STEMS UNDER CURB STEM
5G REQ'D 1G REQ'D
FABRIC BEARING PAD DETAILS
(SEE SPECIAL PROVISIONS)

BILL OF MATERIAL

BAR	No	SIZE	LENGTH	SHAPE	
a	2088	#4	3'-3"		
a1	1376	#4	2'-0"		
b	820	#4	31'-6"		
b1	320	#4	3'-5"		
g	16	#4	31'-6"		
g1	128	#10	31'-6"		
g2	128	#11	31'-6"		
S2	2072	#3	5'-10"		
S3	296	#3	5'-11"		
PRECAST CONCRETE BRIDGE SLAB				59.77	3808

APPROVED COUNTY SUPERINTENDENT OF HIGHWAYS
EXAMINED ENGINEER OF BRIDGE AND TRAFFIC STRUCTURES
PASSED ENGINEER OF DESIGN
APPROVED CHIEF HIGHWAY ENGINEER

ALFRED BRONKH & COMPANY
ENGINEERS ARCHITECTS
124 WEST 42ND STREET, NEW YORK 36, N.Y.

PRECAST BRIDGE SLAB
SUNDAUK CREEK BRIDGE
OVER SUNDAUK CREEK
SECTION 119.5
LA SALLE COUNTY
ILLINOIS

Contract 87351
SHEET 47
Added 2-20-08