

F.A.S. RTE.	SECTION	COUNTY	TOTAL SHEETS	SHEET NO.
1274	05-00627-00-BR	LASALLE	45	1

FOR INDEX OF SHEETS, SEE SHEET NO. 2

FOR LIST OF HIGHWAY STANDARDS, SEE SHEET NO. 2

TRAFFIC DATA

FAS 1274 (LASALLE STREET)
 DESIGN DESIGNATION: MAJOR COLLECTOR (RURAL)
 ADT: 9,400 (2030)
 DESIGN SPEED: 60 MPH

STATE OF ILLINOIS
 DEPARTMENT OF TRANSPORTATION
 DIVISION OF HIGHWAYS

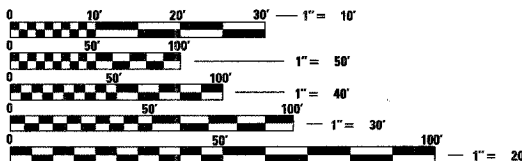
**PROPOSED
 HIGHWAY PLANS**

MAJOR BRIDGE
 FAS 1274 (LASALLE STREET)
 SECTION: 05-00627-00-BR
 PROJECT NO.:BROS-099(36)
 JOB #: C-93-062-07
 LASALLE COUNTY

**REPLACEMENT OF EXISTING SUPERSTRUCTURE (S.N.) 050-3057
 AND RECONSTRUCTION OF THE ADJACENT IMPACTED ROADWAY**



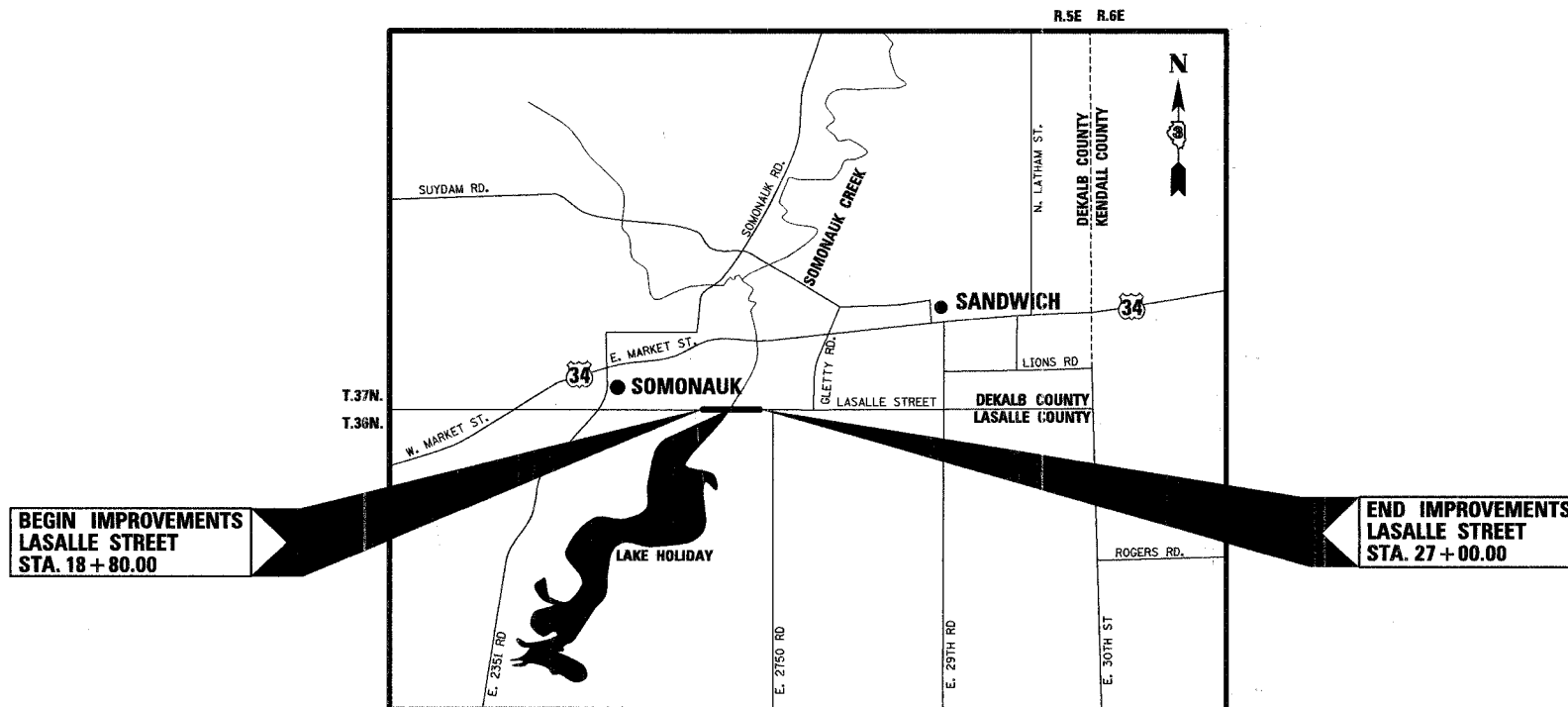
J.U.L.I.E.
 JOINT UTILITY LOCATION INFORMATION FOR EXCAVATION
 1-800-892-0123 (CALL 48 HOURS IN ADVANCE)



FULL SIZE PLANS HAVE BEEN PREPARED USING STANDARD ENGINEERING SCALES. REDUCED SIZED PLANS WILL NOT CONFORM TO STANDARD SCALES. IN MAKING MEASUREMENTS ON REDUCED PLANS, THE ABOVE SCALES MAY BE USED.

SOMONAUK TOWNSHIP, SECTION 34, T.37N.-R.5E.
 NORTHVILLE TOWNSHIP, SECTION 3 & 4, T.36N.-R.5E.

CONTRACT NO: 87351



STATE OF ILLINOIS
 PROFESSIONAL ENGINEER
 ROBERT G. SIMMONS
 081-004988
 EXPIRES 11/20/08

LOCATION MAP
 NOT TO SCALE
 PROJECT GROSS LENGTH = PROJECT NET LENGTH = 820 FEET (0.16 MILES)

ANTHONY J. SIMMONS, P.E.
 NO. 062-058414
 EXPIRES: 11/30/07
 SMITH ENGINEERING CONSULTANTS, INC.

STATE OF ILLINOIS
 DEPARTMENT OF TRANSPORTATION
 DIVISION OF HIGHWAYS

SUBMITTED 11/19 20 07
James J. King COUNTY ENGINEER

11/15 20 07
John G. King VILLAGE PRESIDENT

11/26 20 07
Harold R. King DISTRICT ENGINEER OF LOCAL ROADS AND STREETS

11/26 20 07
George E. King DEPUTY DIRECTOR, REGIONAL ENGINEER

Illinois Professional Design Firm # 184-000108
SEC GROUP, INC.
 Smith Engineering Consultants - SEC Automation - SEC Planning
 651 Prairie Point Drive, Yorkville, IL 60560
 t. 630.553.7660 f. 630.553.7646
 www.secgroupinc.com engineering@secgroupinc.com

DATE: 11/15/07
 DRAWN: SPEC