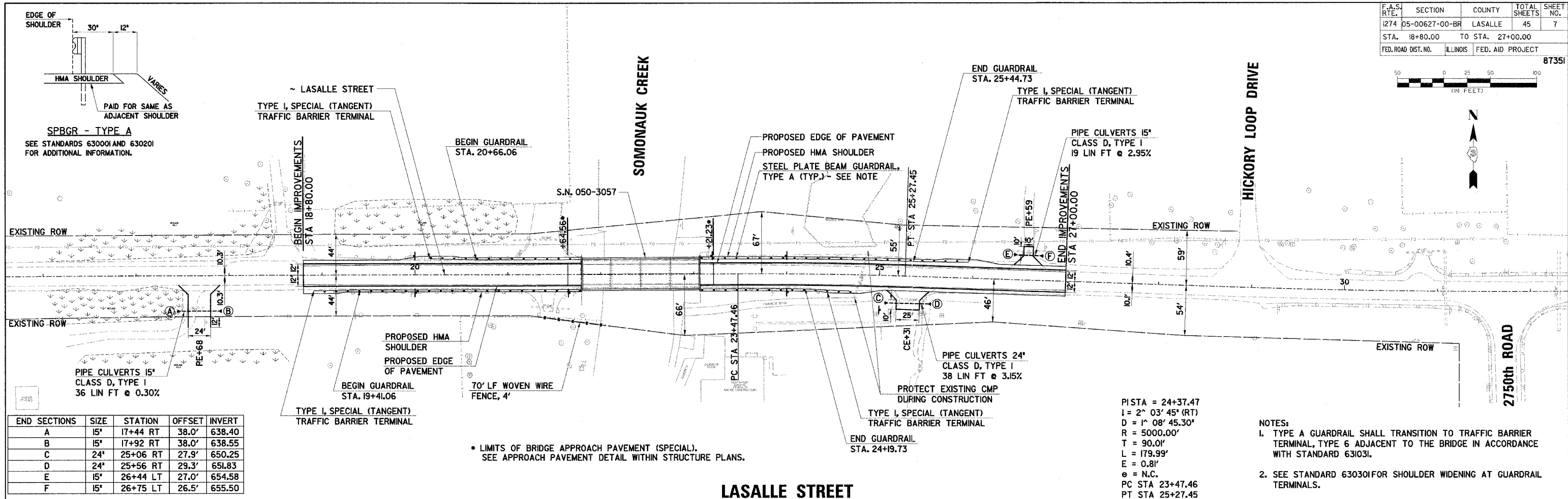




PLAN	SURVEYED	DATE
	PLOTTED	
	NOTED	
	BY	
	DATE	

PROFILE	SURVEYED	DATE
	PLOTTED	
	NOTED	
	BY	
	DATE	



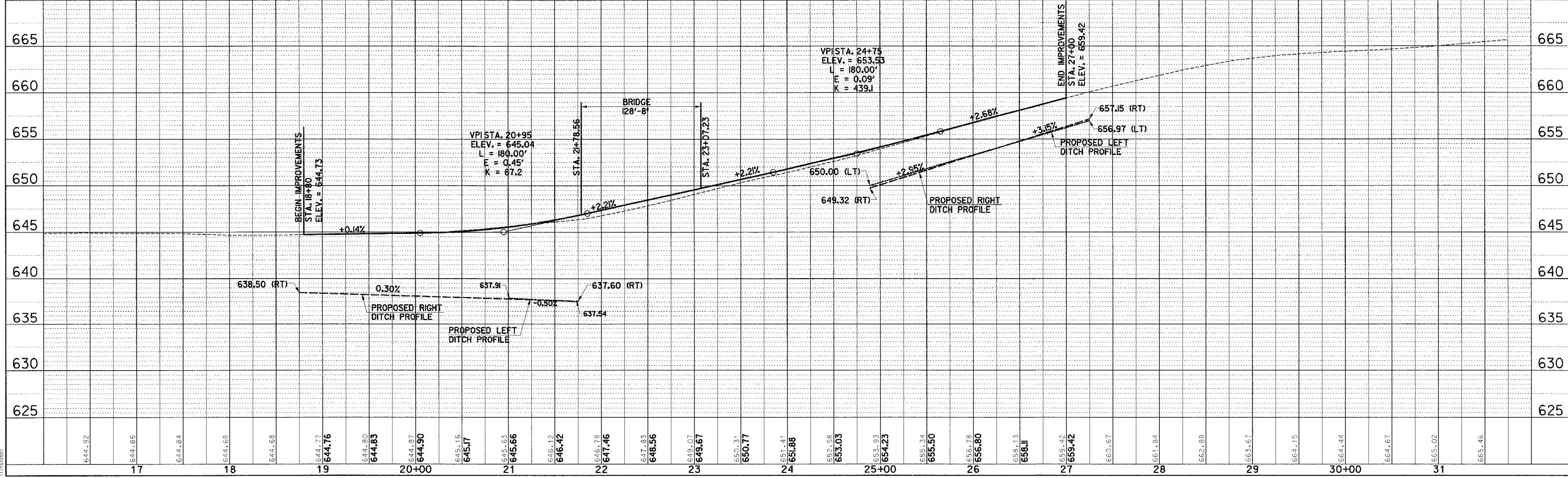
END SECTIONS	SIZE	STATION	OFFSET	INVERT
A	15'	17+44 RT	38.0'	638.40
B	15'	17+92 RT	38.0'	638.55
C	24'	25+06 RT	27.9'	650.25
D	24'	25+56 RT	29.3'	651.83
E	15'	26+44 LT	27.0'	654.58
F	15'	26+75 LT	26.5'	655.50

• LIMITS OF BRIDGE APPROACH PAVEMENT (SPECIAL).
SEE APPROACH PAVEMENT DETAIL WITHIN STRUCTURE PLANS.

PISTA = 24+37.47
I = 2' 03' 45" (RT)
D = 1' 08' 45.30"
R = 5000.00'
T = 90.01'
L = 179.99'
E = 0.81'
e = N.C.
PC STA 23+47.46
PT STA 25+27.45

- NOTES:
- TYPE A GUARDRAIL SHALL TRANSITION TO TRAFFIC BARRIER TERMINAL, TYPE 6 ADJACENT TO THE BRIDGE IN ACCORDANCE WITH STANDARD 631031.
 - SEE STANDARD 630301 FOR SHOULDER WIDENING AT GUARDRAIL TERMINALS.

LASALLE STREET



17/19/2020
 C:\Users\jmc\OneDrive\Documents\Projects\1274\1274-05-00627-00-BR\1274-05-00627-00-BR.dwg
 17/19/2020