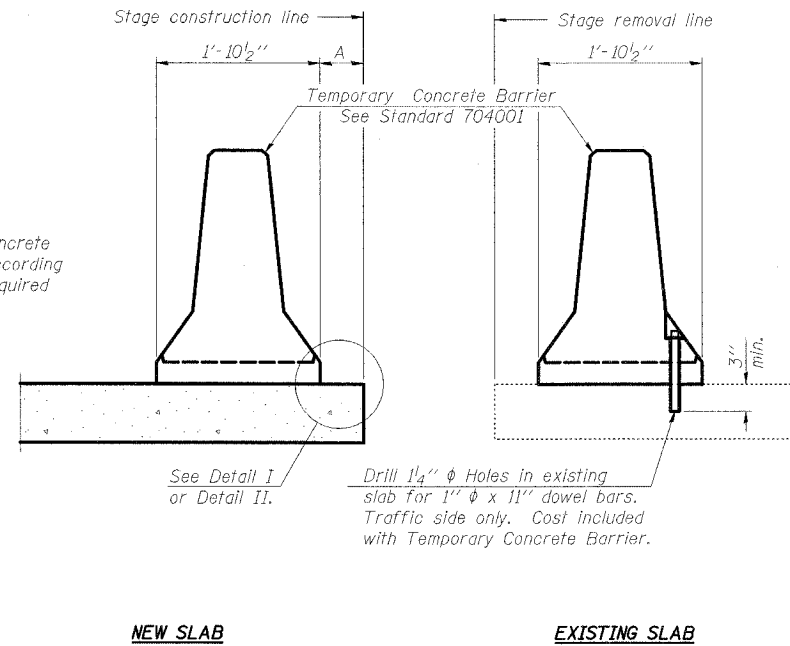


ROUTE NO.	DISTRICT	COUNTY	TOTAL SHEETS	SHEET NO.
FAS 1274	05-00627-00-BR	LASALLE	45	17
FED. ROAD DIST. NO.	ILLINOIS	FED. AID PROJECT		
1				

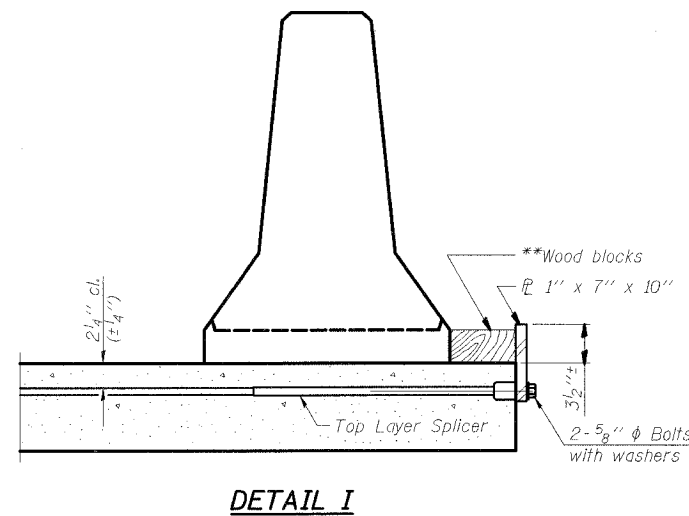
SHEET NO. S-4
S-16 SHEETS

87351

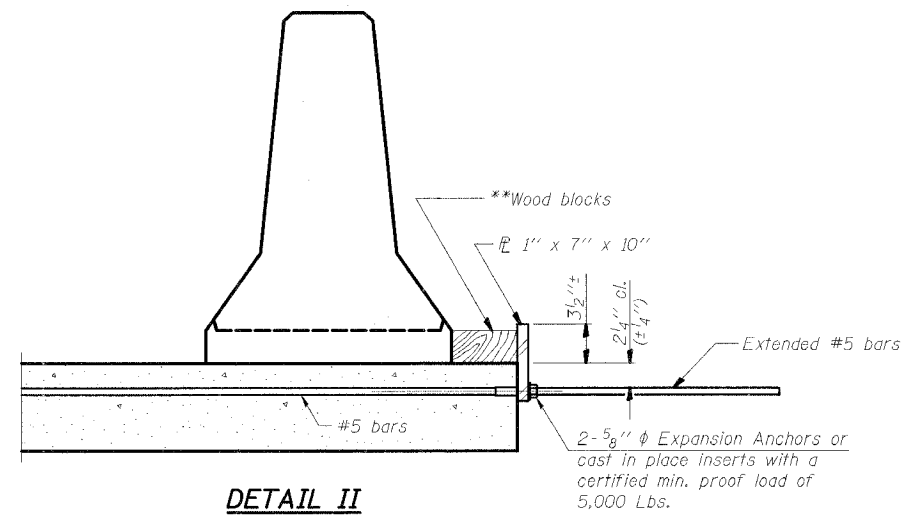
When "A" is 3'-6" or less, the temporary concrete barrier shall be anchored to the new slab according to Detail I or Detail II. No anchorage is required when "A" is greater than 3'-6".



SECTIONS THRU SLAB



DETAIL I



DETAIL II

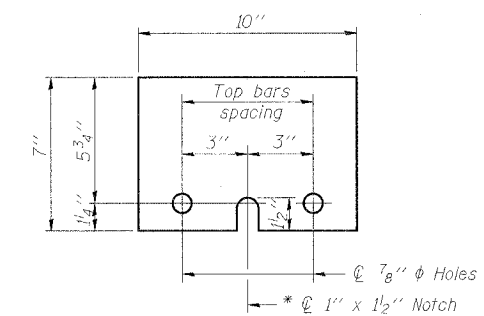
** Wood blocks may be omitted when required to provide minimum stage traffic lane width. When the wood blocks are omitted, the concrete barrier shall be in direct contact with the steel retainer plate.

NOTES

Detail I - With Bar Splicer or Couplers:
Connect one (1) 1"x7"x10" steel PL to the top layer of couplers with 2-5/8" φ bolts screwed to coupler at approximate CL of each barrier panel.

Detail II - With Extended Reinforcement Bars:
Connect one (1) 1"x7"x10" steel PL to the concrete slab with 2-5/8" φ Expansion Anchors or cast in place inserts spaced between the top layer of reinforcement at approximate CL of each barrier panel.

Cost of anchorage is included with Temporary Concrete Barrier. The 1" x 7" x 10" plate shall not be removed until stage II construction forms and all reinforcement bars are in place and the concrete is ready to be placed.



STEEL RETAINER PLATE 1" x 7" x 10"

* Required only with Detail II

DESIGNED	KMA
CHECKED	AEU
DRAWN	WJH
CHECKED	RGD

COMPANY NAME: Smith, Brinkley & Associates
 CLIENT: ILLINOIS
 PROJECT: 050-00627-00-BR
 SHEET: S-16

Illinois Professional Design Firm # 184-000108
SEC GROUP, INC.
 Smith Engineering Consultants • SEC Automation • SEC Planning
 4500 Prairie Parkway, McHenry, IL 60050
 T 615.385.1778 F 615.385.1781
 www.secgroupinc.com engineering@secgroupinc.com

LASALLE COUNTY HIGHWAY DEPARTMENT

TEMPORARY CONCRETE BARRIER
 FOR STAGE CONSTRUCTION
 LASALLE STREET
 VILLAGE OF SOMONAUK CREEK
 VILLAGE OF SOMONAUK
 SECTION NO. 05-00627-00-BR
 STRUCTURE NO. 050-3057

DATE 11-16-2007