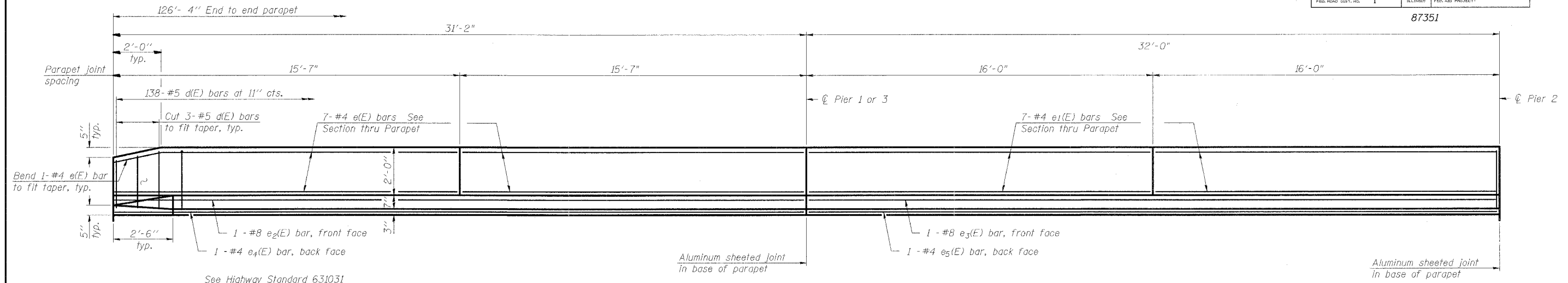


87351

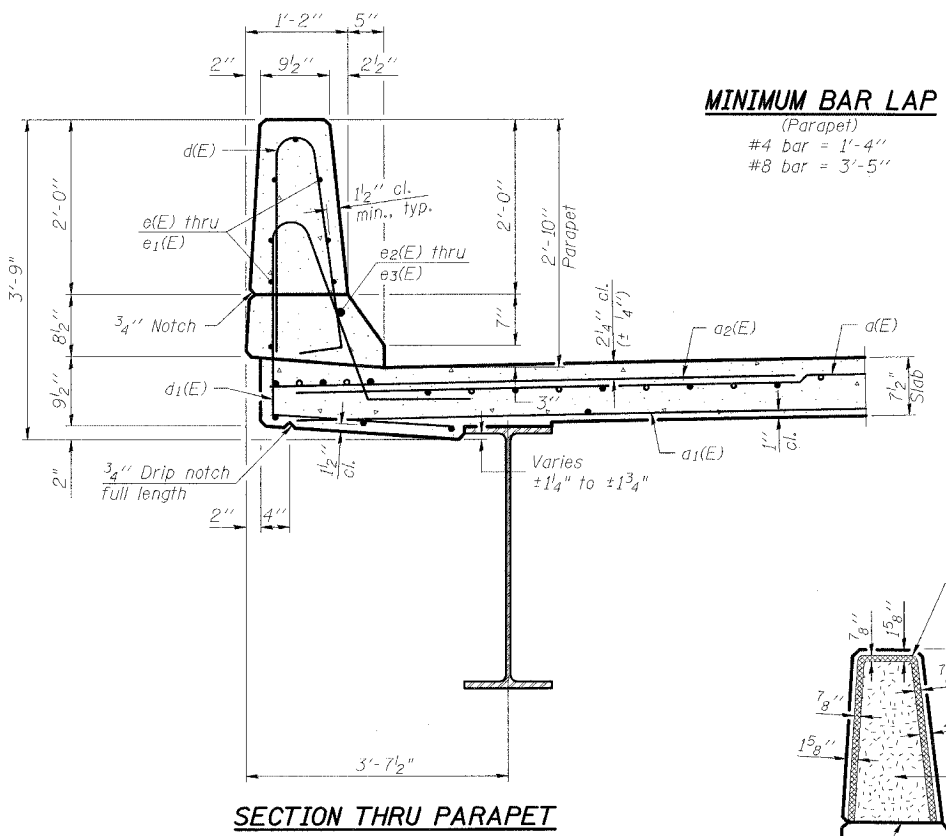


INSIDE HALF ELEVATION OF PARAPET
(Symmetric about ϕ Pier 2)

See Highway Standard 631031 for Traffic Barrier Terminal, Type 6 connection details (Typ. each end of parapet)

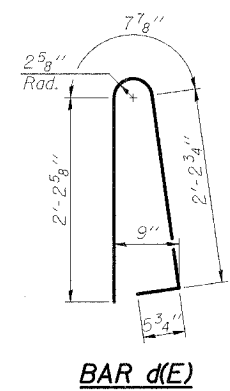
SUPERSTRUCTURE BILL OF MATERIAL

Bar	No.	Size	Length	Shape	
a (E)	202	# 5	18'-4"	—	
a ₁ (E)	154	# 5	17'-6"	—	
a ₂ (E)	202	# 6	6'-0"	—	
a ₃ (E)	202	# 5	16'-4"	—	
a ₄ (E)	154	# 5	15'-6"	—	
a ₅ (E)	8	# 6	18'-4"	—	
a ₆ (E)	8	# 6	16'-4"	—	
a ₇ (E)	24	# 5	6'-6"	U	
a ₈ (E)	6	# 5	4'-3"	U	
a ₉ (E)	6	# 5	2'-3"	U	
b (E)	228	# 5	23'-2"	—	
b ₁ (E)	108	# 6	17'-4"	—	
b ₂ (E)	155	#5	27'-4"	—	
d (E)	276	# 5	5'-7"	D	
d ₁ (E)	276	# 5	8'-6"	D	
e (E)	56	# 4	15'-4"	—	
e ₁ (E)	56	# 4	15'-9"	—	
e ₂ (E)	4	# 8	30'-11"	—	
e ₃ (E)	4	# 8	31'-9"	—	
e ₄ (E)	4	# 4	30'-11"	—	
e ₅ (E)	4	# 4	31'-9"	—	
x ₁ (E)	58	# 5	5'-11"	—	
Reinforcement Bars, Epoxy Coated				Pound	34,190
Concrete Superstructure				Cu. Yds.	136.7

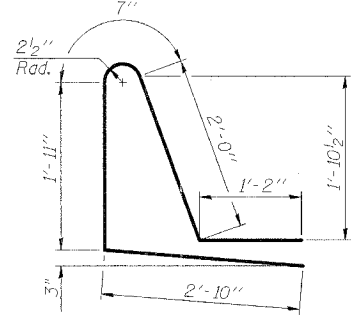


SECTION THRU PARAPET

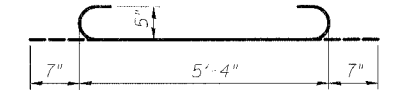
MINIMUM BAR LAP
(Parapet)
#4 bar = 1'-4"
#8 bar = 3'-5"



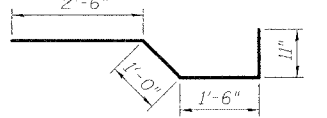
BAR d(E)



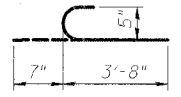
BAR d1(E)



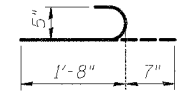
a7(E) BAR



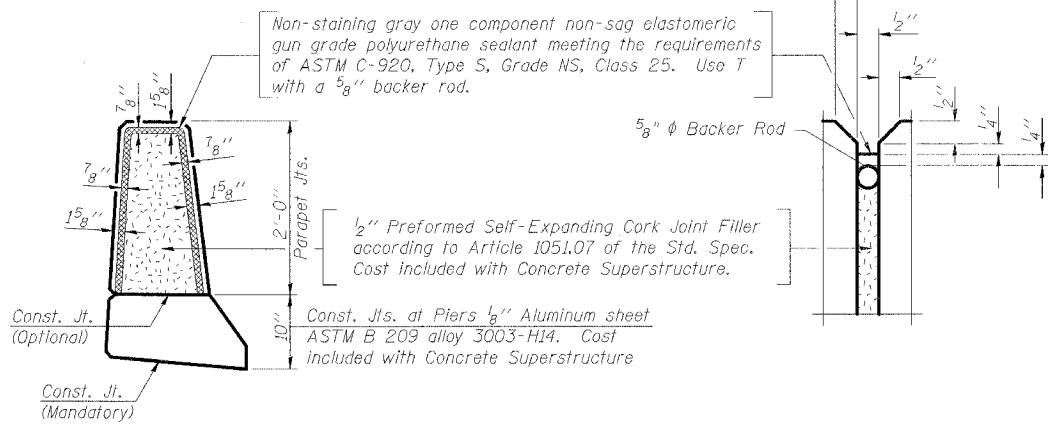
x1(E) BAR



a8(E) BAR



a9(E) BAR



PARAPET JOINT DETAILS

DESIGNED	KMA
CHECKED	AEU
DRAWN	WJH
CHECKED	RGD

LASALLE COUNTY HIGHWAY DEPARTMENT
DECK PLAN AND CROSS SECTION
LASALLE STREET
OVER SOMONAUK CREEK
VILLAGE OF SOMONAUK
SECTION NO. 05-00627-00-BR
STRUCTURE NO. 050-3057
DATE 11-16-2007

Illinois Professional Design Firm # 184-000108
SEC GROUP, INC.
Smith Engineering Consultants • SEC Automation • SEC Planning
4500 Prime Parkway, McHenry, IL 60050
T. 815.385.1778 F. 815.385.1781
www.secgroupinc.com engineering@secgroupinc.com

COMPANY NAME: Smith
 CLIENT: #050627
 PROJECT: #050627
 SHEET: S-16
 DATE: 11-16-2007