

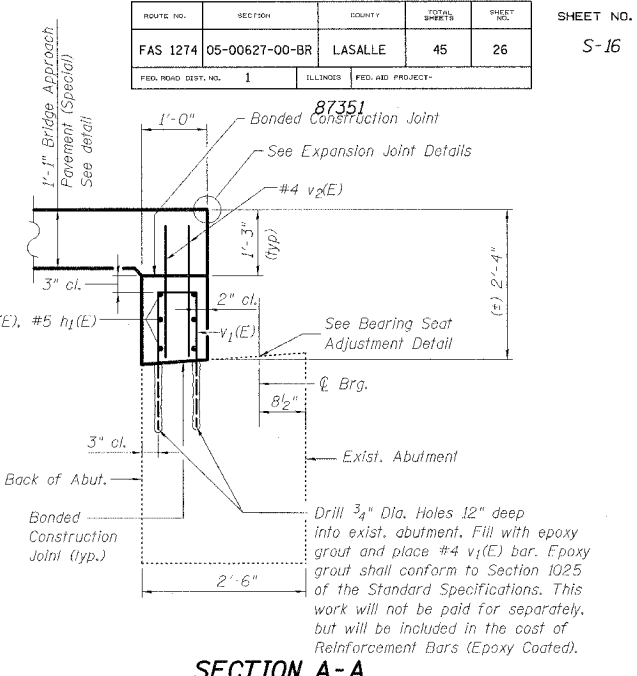
ABUTMENT ELEVATION
Looking at East Abutment
West Abutment similar, but opposite hand

	West Abutment	East Abutment
Elev. "A"	646.74	649.58
Elev. "B"	646.99	649.83
Elev. "C"	646.87	649.71

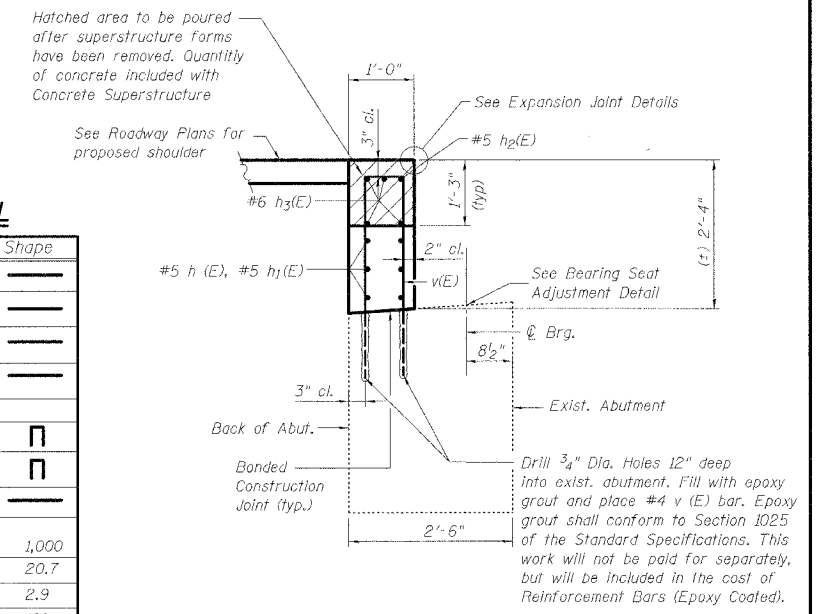
*** ABUTMENT BILL OF MATERIAL**

Bar	No.	Size	Length	Shape
h ₁ (E)	12	# 5	17'-9"	—
h ₂ (E)	4	# 5	6'-7"	—
h ₃ (E)	16	# 6	6'-1"	—
v(E)	16	# 4	6'-9"	⊏
v ₁ (E)	50	# 4	4'-3"	⊏
v ₂ (E)	100	# 4	2'-0"	—
Reinforcement Bars Epoxy Coated		Pound	1,000	
Structure Excavation		Cu. Yds.	20.7	
Concrete Structures		Cu. Yds.	2.9	
Concrete Sealer		Sq. Ft.	169	

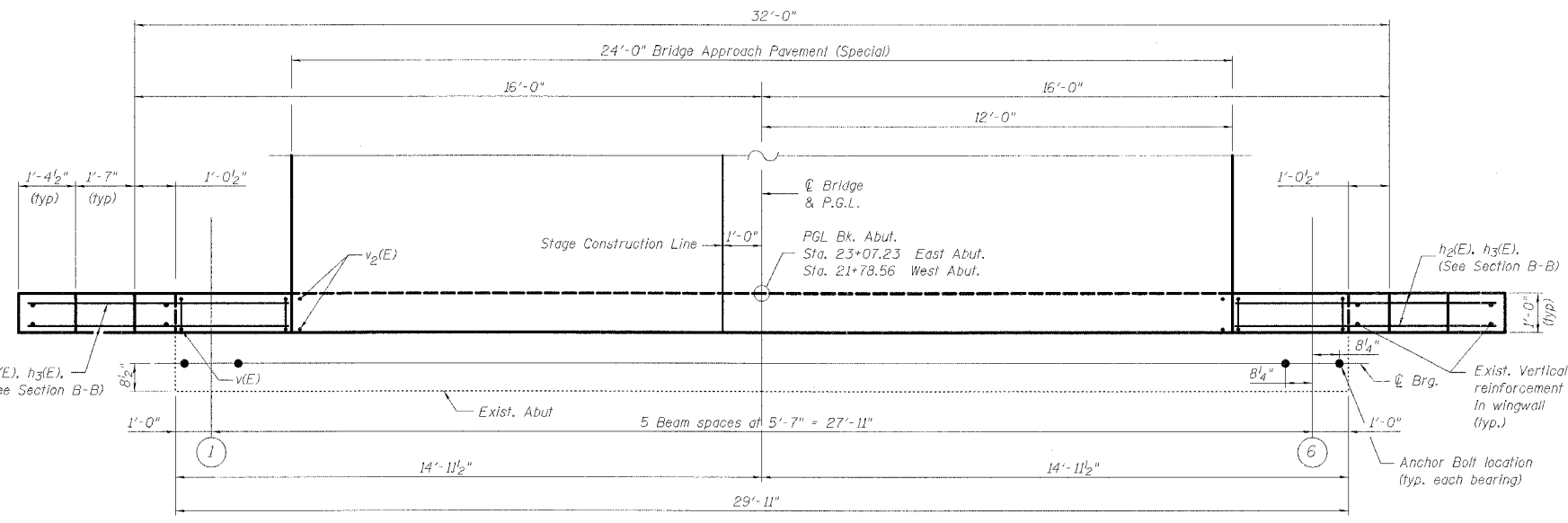
* Quantities provided for both abutments



SECTION A-A



SECTION B-B

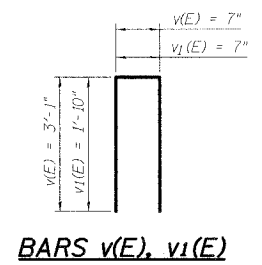


ABUTMENT PLAN
Looking at East Abutment
West Abutment similar, but opposite hand

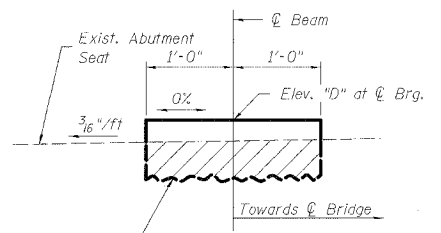
APPROXIMATE EXISTING BEARING SEAT ELEVATIONS AT ABUTMENTS

	⊕ Brg. West Abutment	⊕ Brg. East Abutment
⊕ Beam 1	644.39	647.23
⊕ Beam 2	644.48	647.32
⊕ Beam 3	644.57	647.41
⊕ Beam 4	644.57	647.41
⊕ Beam 5	644.48	647.32
⊕ Beam 6	644.39	647.23

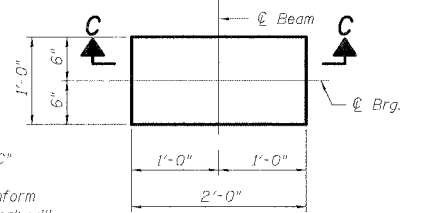
Included for bidders information only. Existing Bearing Seat elevations are based on field survey and information from the existing design plans and should be field verified.



BARS v(E), v1(E)



SECTION C-C
BEARING SEAT ADJUSTMENT DETAIL



PLAN

DESIGNED	KMA
CHECKED	AEU
DRAWN	WJH
CHECKED	RGD

COMPANY NAME: Smith, Rosehart & Conner
 COUNTY: ILLINOIS
 PROJECT: FAS 1274
 SHEET: S-16

Illinois Professional Design Firm # 184-000108
SEC GROUP, INC.
 Smith Engineering Consultants • SEC Automation • SEC Planning
 4500 Prime Parkway, Moline, IL 60050
 T. 815.385.1778 F. 815.385.1781
 www.secgroupinc.com engr@secgroupinc.com

LASALLE COUNTY HIGHWAY DEPARTMENT
SUBSTRUCTURE DETAILS
 LASALLE STREET
 OVER SOMONAUK CREEK
 VILLAGE OF SOMONAUK
 SECTION NO. 05-00627-00-BR
 STRUCTURE NO. 050-3057
 DATE 11-16-2007