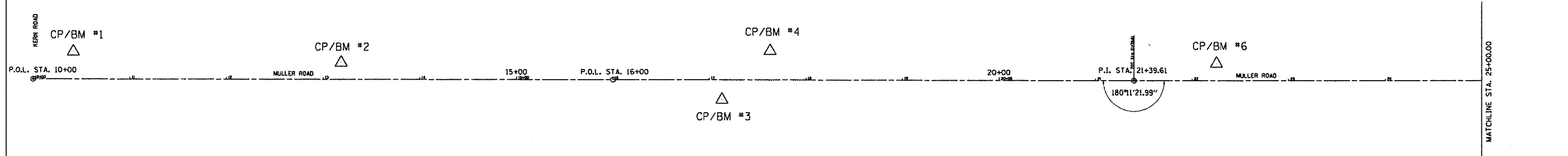
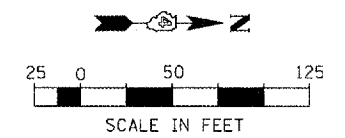
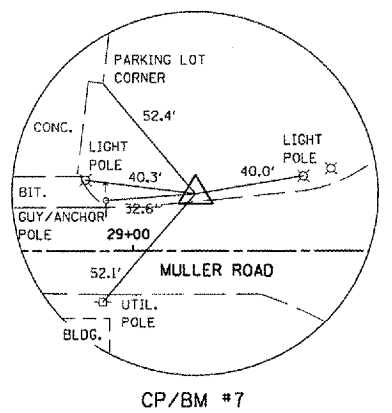
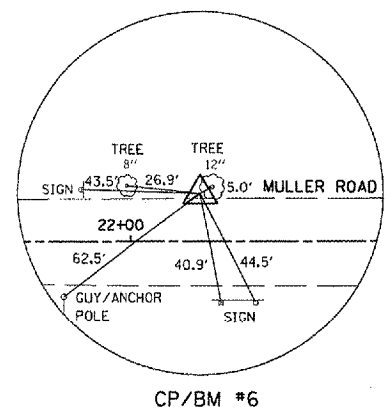
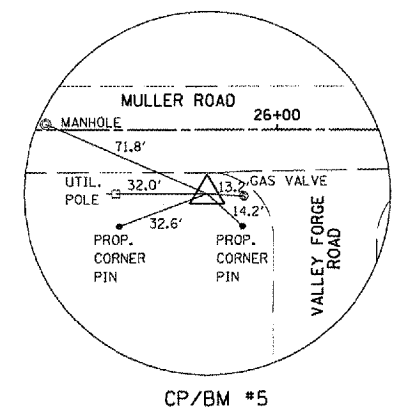
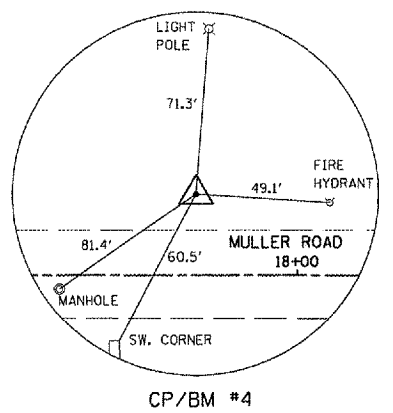
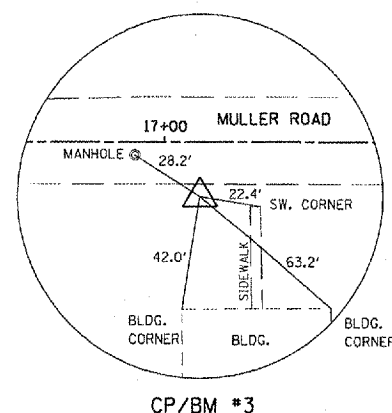
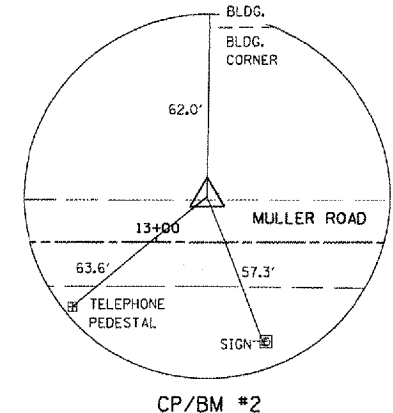
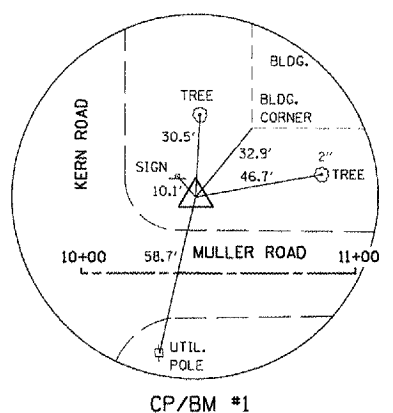


F.A. RTE.	SECTION	COUNTY	TOTAL SHEETS	SHEET NO.
MS 7660	05-00104-00-RS	TAZEWELL	36	7
STA.		TO STA.		
FED. ROAD DIST. NO.		ILLINOIS	FED. AID PROJECT	



CONTROL POINTS/BENCHMARKS						
CONTROL POINT/BENCHMARK	DESCRIPTION	NORTHING	EASTING	ELEVATION	STATION	OFFSET
1	1/2" IRON ROD	5000.00	5000.00	737.65	10+41.45	28.40' LT.
2	CHISELED "X" IN DRIVE	5277.01	5011.59	741.92	13+18.52	17.27' LT.
3	1/2" IRON ROD	5671.31	5049.94	748.89	17+12.88	12.88' RT.
4	1/2" IRON ROD	5721.30	4999.81	750.16	17+62.82	28.80' LT.
5	1/2" IRON ROD	6540.80	5053.01	770.89	25+82.31	23.53' RT.
6	RAILROAD SPIKE	6183.64	5012.40	781.81	22+25.21	17.68' LT.
7	1/2" IRON ROD W/CAP	6881.22	5007.88	773.54	29+22.79	21.04' LT.

ALIGNMENT COORDINATE TABLE		
DESCRIPTION	NORTHING	EASTING
P.O.L. STA. 10+00	4958.46	5028.33
P.O.L. STA. 16+00	5558.46	5029.32
P.I. STA. 21+39.61	6098.07	5030.22
P.O.L. STA. 26+00	6558.46	5029.46
P.O.L. STA. 30+45.83	7004.29	5028.72



REVISIONS	
NAME	DATE

ILLINOIS DEPARTMENT OF TRANSPORTATION

**MULLER ROAD IMPROVEMENTS
ALIGNMENT, TIES,
BENCHMARKS AND LINE DIAGRAM**

SCALE: AS SHOWN
DATE: 11-14-07

DRAWN BY: DLG
CHECKED BY: KMC

PLOT DATE: 11/14/07
FILE NAME: 89467.DWG
PLOT SCALE: 1/8"=1'-0"
USER: KMC