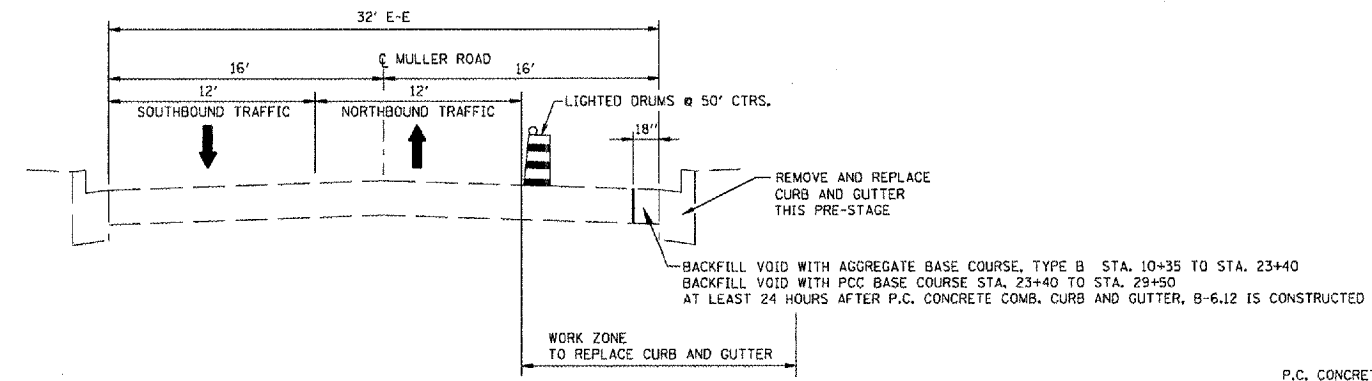
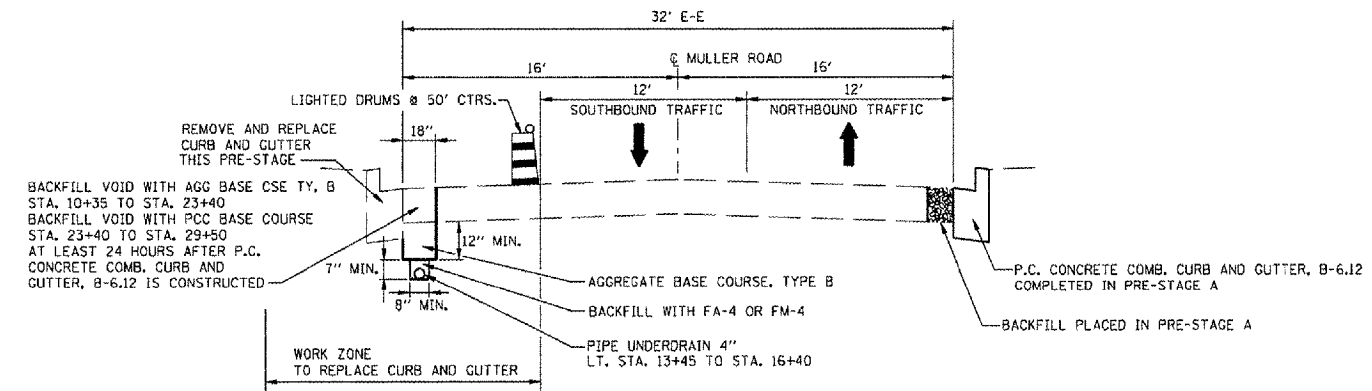


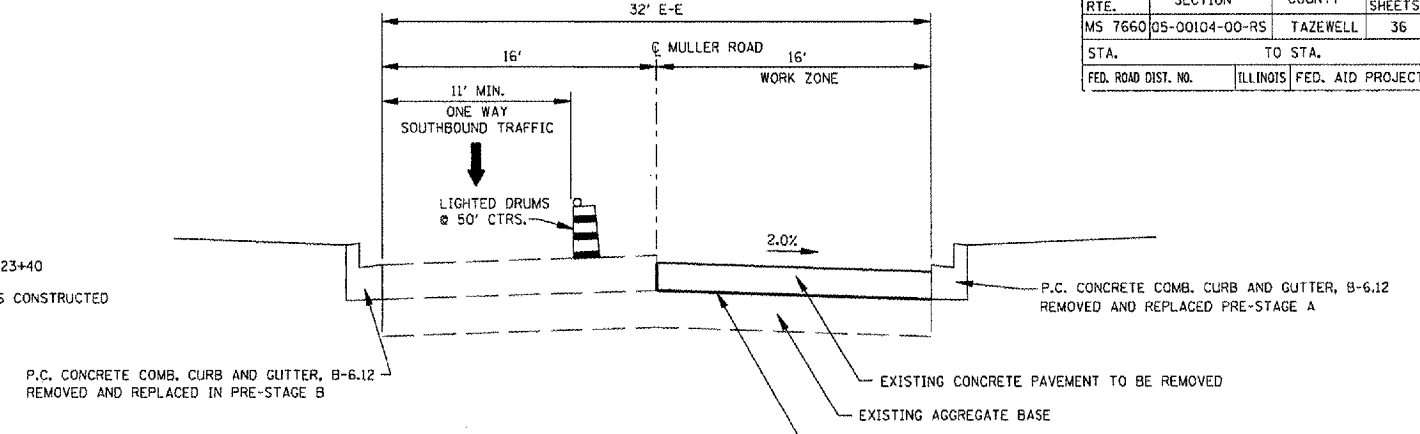
F.A. RTE.	SECTION	COUNTY	TOTAL SHEETS	SHEET NO.
MS 7660	05-00104-00-RS	TAZEWELL	36	8
STA.		TO STA.		
FED. ROAD DIST. NO.		ILLINOIS FED. AID PROJECT		



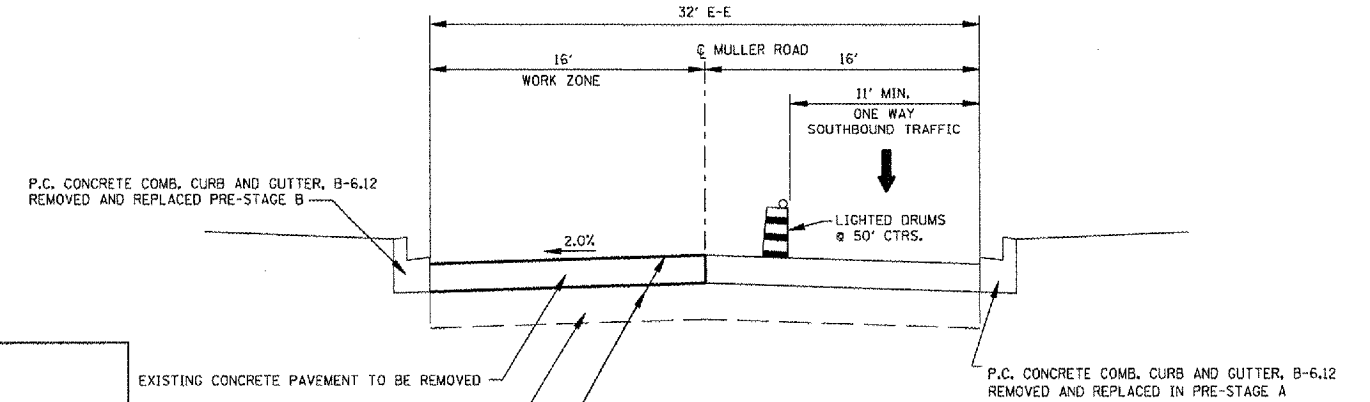
MAINTENANCE OF TRAFFIC - PRE-STAGE A TYPICAL SECTION
NOT TO SCALE



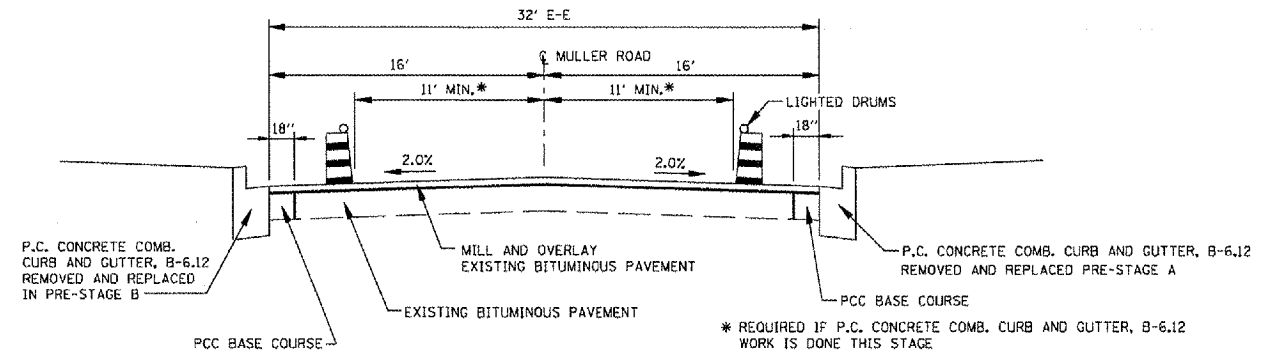
MAINTENANCE OF TRAFFIC - PRE-STAGE B TYPICAL SECTION
NOT TO SCALE



MAINTENANCE OF TRAFFIC - STAGE 1 TYPICAL SECTION
STA. 10+35 TO STA. 23+40
NOT TO SCALE



MAINTENANCE OF TRAFFIC - STAGE 2 TYPICAL SECTION
STA. 10+35 TO STA. 23+40
NOT TO SCALE



MAINTENANCE OF TRAFFIC - STAGE 3 TYPICAL SECTION
STA. 23+40 TO STA. 29+60
NOT TO SCALE

PRE-STAGE A

CONSTRUCTION
REMOVE AND REPLACE CURB AND GUTTER, INLETS AND ENTRANCES ON RIGHT SIDE PRE-STAGE A STA. 10+35 TO STA. 23+40

GAP AND STAGE CONSTRUCT DRIVEWAYS AS SHOWN ON PLANS TO MAINTAIN ACCESS

BACKFILL ADJACENT TO NEW CURB AND GUTTER WITH CA-6 AGGREGATE STA. 10+35 TO STA. 23+40

BACKFILL ADJACENT TO NEW CURB AND GUTTER WITH PCC BASE COURSE STA. 23+40 TO STA. 29+60

ALL WORK IN PRESTAGE A TO BE DONE PRIOR TO WORK IN PRESTAGE B

TRAFFIC
PROVIDE TWO LANES, LANE WIDTH 12' DRUMS/BARRICADES @ 50' CTRS.
HWY STD 701501
HWY STD 701501 ON KERN RD AS REQUIRED.

STAGE 1 (RIGHT SIDE)

CONSTRUCTION
REMOVE EXISTING CONCRETE PAVEMENT RIGHT SIDE STA. 10+35 TO STA. 23+40 - STAGE 1A EXCEPT FOR THE PAVEMENT AT THE DRIVEWAYS MARKED "GAP IN CONSTRUCTION"

CONSTRUCT AGGREGATE BASE COURSE AS REQUIRED

CONSTRUCT THE HMA FULL DEPTH PAVEMENT EXCEPT FOR THE FINAL SURFACE COURSE (2") STA. 10+35 TO STA. 23+40

COMPLETE THE REMOVAL AND CONSTRUCTION OF GAPPED AREAS RIGHT SIDE - STAGE 1B

ALL WORK IN STAGE 1 TO BE DONE PRIOR TO WORK IN STAGE 2

TRAFFIC
PROVIDE ONE LANE, ONE WAY TRAFFIC SOUTHBOUND MINIMUM LANE WIDTH 11' STA. 10+35 TO STA. 23+40

PROVIDE TWO LANE, TWO WAY TRAFFIC STA. 23+40 TO STA. 29+60

HWY STD BLR 17, 701501
HWY. STD. 701701 ON BUSINESS 24 AS REQUIRED.

PRE-STAGE B

CONSTRUCTION
REMOVE AND REPLACE CURB AND GUTTER, INLETS AND ENTRANCES ON LEFT SIDE PRE-STAGE B STA. 10+35 TO STA. 23+40

GAP AND STAGE CONSTRUCT DRIVEWAYS AS SHOWN ON PLANS TO MAINTAIN ACCESS

CONSTRUCT UNDERDRAIN FROM STA. 13+45 TO STA. 16+40

BACKFILL ADJACENT TO NEW CURB AND GUTTER WITH CA-6 AGGREGATE STA. 10+35 TO STA. 23+40

BACKFILL ADJACENT TO NEW CURB AND GUTTER WITH PCC BASE COURSE STA. 23+40 TO STA. 29+60

TRAFFIC
PROVIDE TWO LANES, LANE WIDTH 12' DRUMS/BARRICADES @ 50' CTRS.
HWY STD 701501
HWY STD 701501 ON KERN RD AS REQUIRED.

STAGE 2 (LEFT SIDE)

CONSTRUCTION
REMOVE EXISTING CONCRETE PAVEMENT LEFT SIDE STA. 10+35 TO STA. 23+40 - STAGE 2A EXCEPT FOR THE PAVEMENT AT THE DRIVEWAYS MARKED "GAP IN CONSTRUCTION"

CONSTRUCT AGGREGATE BASE COURSE AS REQUIRED

CONSTRUCT THE HMA FULL DEPTH PAVEMENT EXCEPT FOR THE FINAL SURFACE COURSE (2") STA. 10+35 TO STA. 23+40

COMPLETE THE REMOVAL AND CONSTRUCTION OF GAPPED AREAS LEFT SIDE - STAGE 2B

HWY STD BLR 17, 701501
HWY. STD. 701701 ON BUSINESS 24 AS REQUIRED.

TRAFFIC
PROVIDE ONE LANE, ONE WAY TRAFFIC SOUTHBOUND MINIMUM LANE WIDTH 11' STA. 10+35 TO STA. 23+40

PROVIDE TWO LANE, TWO WAY TRAFFIC FLAGMEN AS REQUIRED STA. 23+40 TO STA. 29+60

STAGE 3

CONSTRUCTION
2" AND VARIABLE DEPTH HMA SURFACE REMOVAL STA. 23+40 TO STA. 29+35

FINAL HMA SURFACE COURSE STA. 10+35 TO STA. 29+75

TRAFFIC
2 WAY TRAFFIC FLAGMEN AS REQUIRED

HWY. STD. 701501

HWY. STD. 701701 ON BUSINESS RTE. 24 AS REQUIRED.

REVISIONS	
NAME	DATE

ILLINOIS DEPARTMENT OF TRANSPORTATION
MULLER ROAD IMPROVEMENTS
MAINTENANCE OF TRAFFIC
TYPICAL SECTIONS AND
CONSTRUCTION/TRAFFIC NOTES

SCALE: AS SHOWN
DATE 11-14-07

DRAWN BY DLG
CHECKED BY KMC

PLOT DATE = 08/01/08
FILE NAME = 05-00104-00-RS
USER NAME = KJUSERS