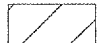

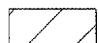
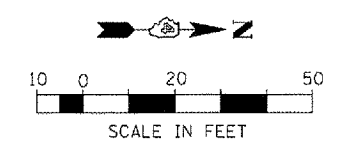


F.A. RTE.	SECTION	COUNTY	TOTAL SHEETS	SHEET NO.
MS 7660	05-00104-00-RS	TAZEWELL	36	10
STA.	TO STA.			
FED. ROAD DIST. NO.	ILLINOIS	FED. AID PROJECT		

- PRE-STAGE A WORK**
- ① ② DRIVEWAYS CANNOT BE CLOSED CONCURRENTLY- CONSTRUCT ①, REOPEN ①, THEN CONSTRUCT ②
 - ③ DRIVEWAYS TO BE CONSTRUCTED ONE HALF AT A TIME ALLOWING DRIVEWAY USE AT ALL TIMES

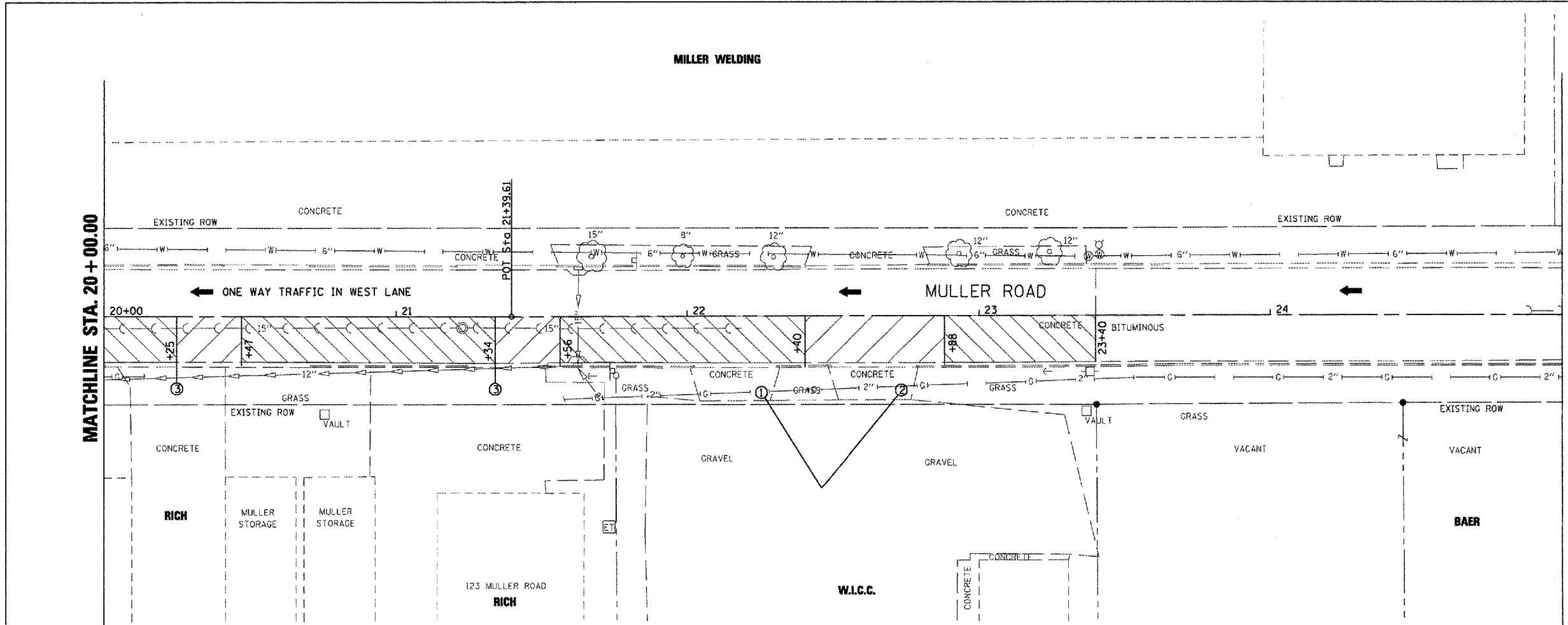
- STAGE 1A WORK**
-  ACCESS TO REMAIN OPEN DURING STAGE 1A
 -  PAVEMENT REMOVAL AND REPLACEMENT PER PLANS IN STAGE 1A

- STAGE 1B WORK**
-  PAVEMENT WORK TO BE COMPLETED IN STAGE 1B



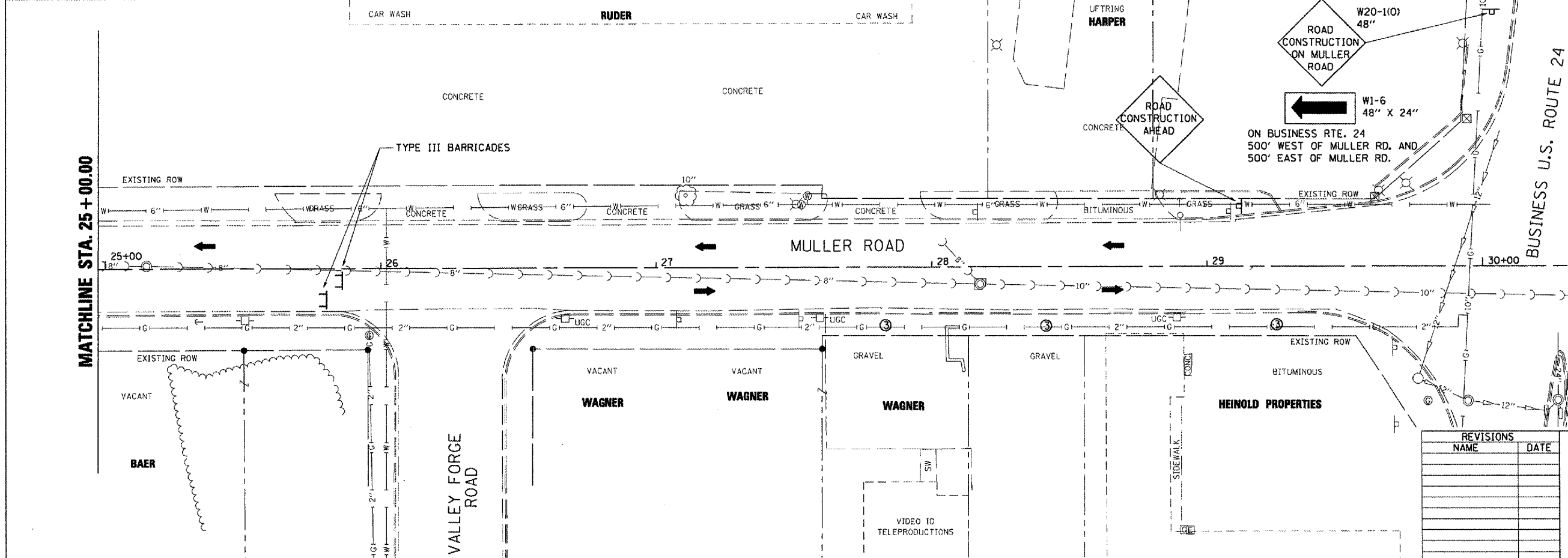
MATCHLINE STA. 20 + 00.00

MATCHLINE STA. 25 + 00.00



MATCHLINE STA. 25 + 00.00

BUSINESS U.S. ROUTE 24



NOTE: SEE STATUS OF UTILITIES TO BE ADJUSTED FOR FURTHER INFORMATION ON UTILITY CONFLICTS.

END DETOUR
M4-80
24" X 18"
PLACE ON WILMORE ROAD
AT BUSINESS RTE. 24

REVISIONS	
NAME	DATE

ILLINOIS DEPARTMENT OF TRANSPORTATION
MULLER ROAD IMPROVEMENTS
MAINTENANCE OF TRAFFIC
STAGE 1

SCALE: AS SHOWN
DATE 11-14-07
DRAWN BY: DLC
CHECKED BY: KMC

PLOT DATE: 11-14-07
FILE NAME: MULLER
USER NAME: KUSER