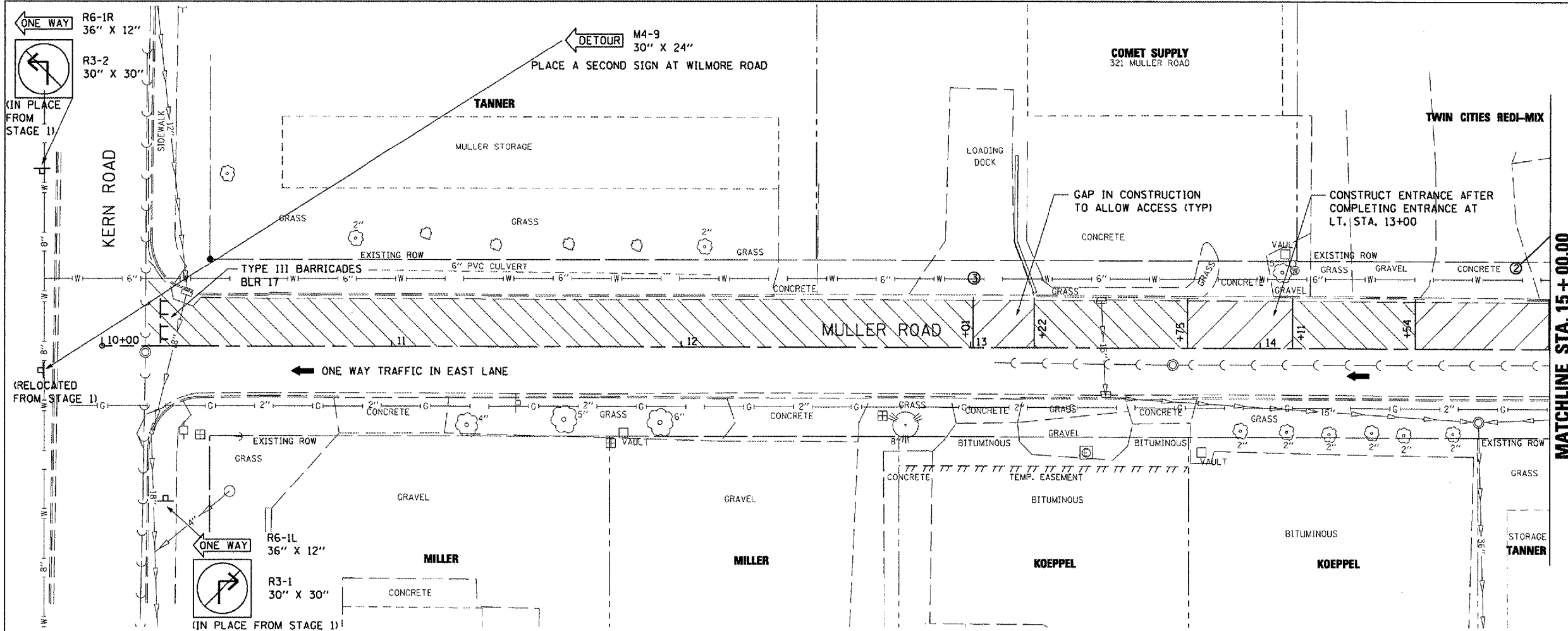


F.A. RTE.	SECTION	COUNTY	TOTAL SHEETS	SHEET NO.
MS 7660	05-00104-00-RS	TAZEWELL	36	11
STA.	TO STA.			
FED. ROAD DIST. NO.	ILLINOIS FED. AID PROJECT			

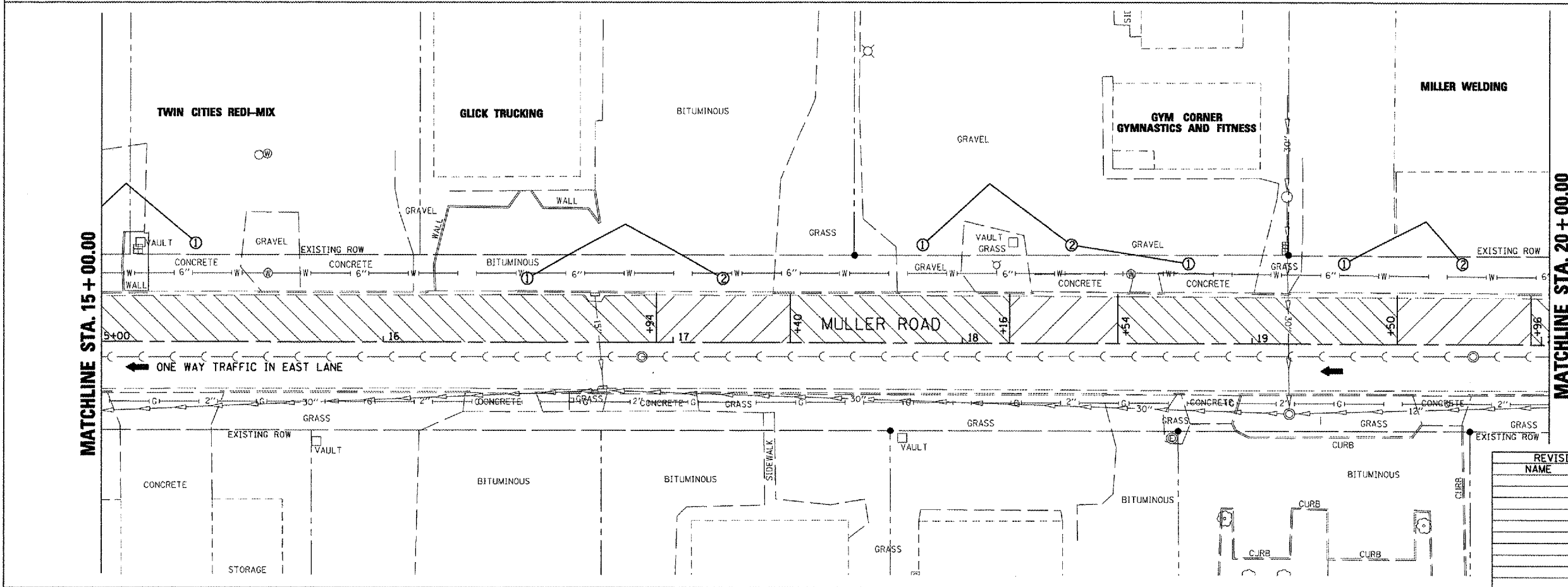


- PRE-STAGE A WORK**
- ① ② DRIVEWAYS CANNOT BE CLOSED CONCURRENTLY- CONSTRUCT ①, REOPEN ①, THEN CONSTRUCT ②
 - ③ DRIVEWAYS TO BE CONSTRUCTED ONE HALF AT A TIME ALLOWING DRIVEWAY USE AT ALL TIMES

- STAGE 1A WORK**
- ACCESS TO REMAIN OPEN DURING STAGE 1A
 - PAVEMENT REMOVAL AND REPLACEMENT PER PLANS IN STAGE 1A

- STAGE 1B WORK**
- PAVEMENT WORK TO BE COMPLETED IN STAGE 1B

MATCHLINE STA. 15 + 00.00



MATCHLINE STA. 20 + 00.00

REVISIONS	
NAME	DATE

ILLINOIS DEPARTMENT OF TRANSPORTATION
MULLER ROAD IMPROVEMENTS
MAINTENANCE OF TRAFFIC
STAGE 2

SCALE: AS SHOWN
 DATE: 11-14-07
 DRAWN BY: DLC
 CHECKED BY: KMC

PLT DATE = 08/05
 FILE NAME = 051114
 PLOT SCALE = 1/8"=1'-0"
 USER NAME = JUSERS