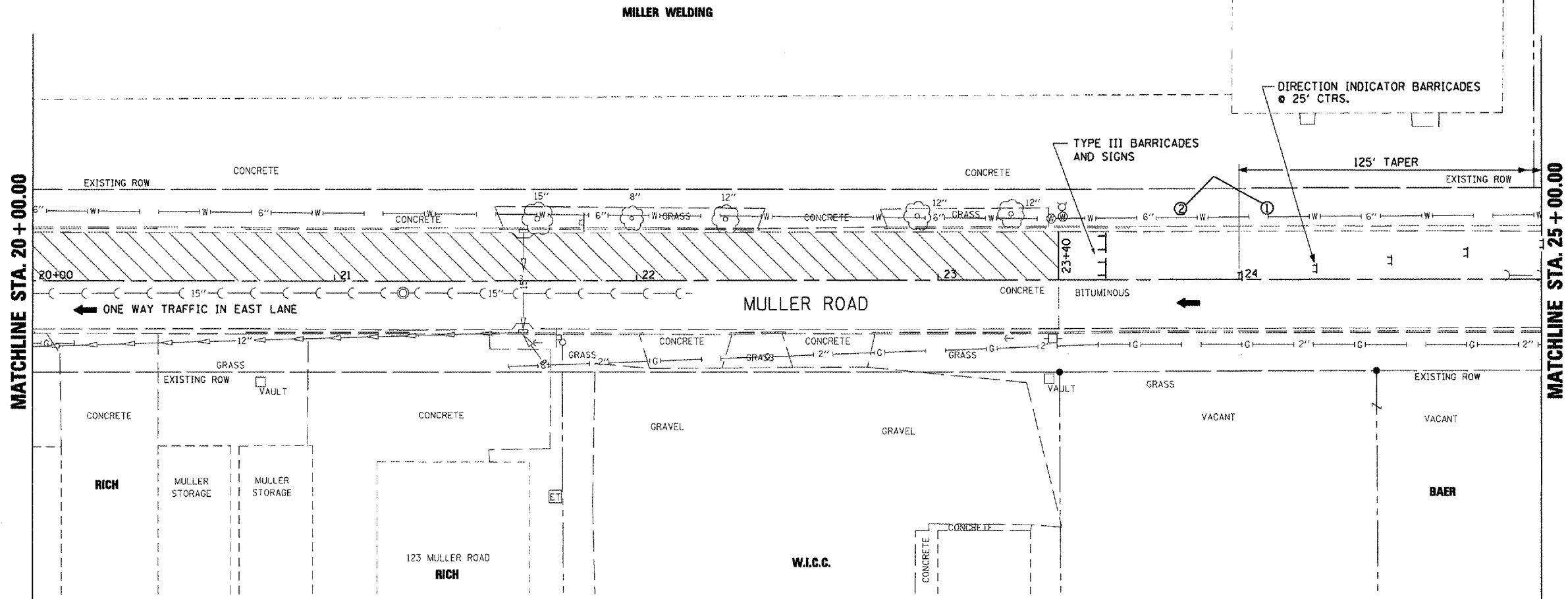


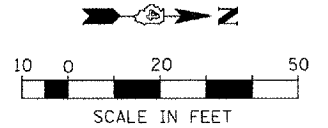
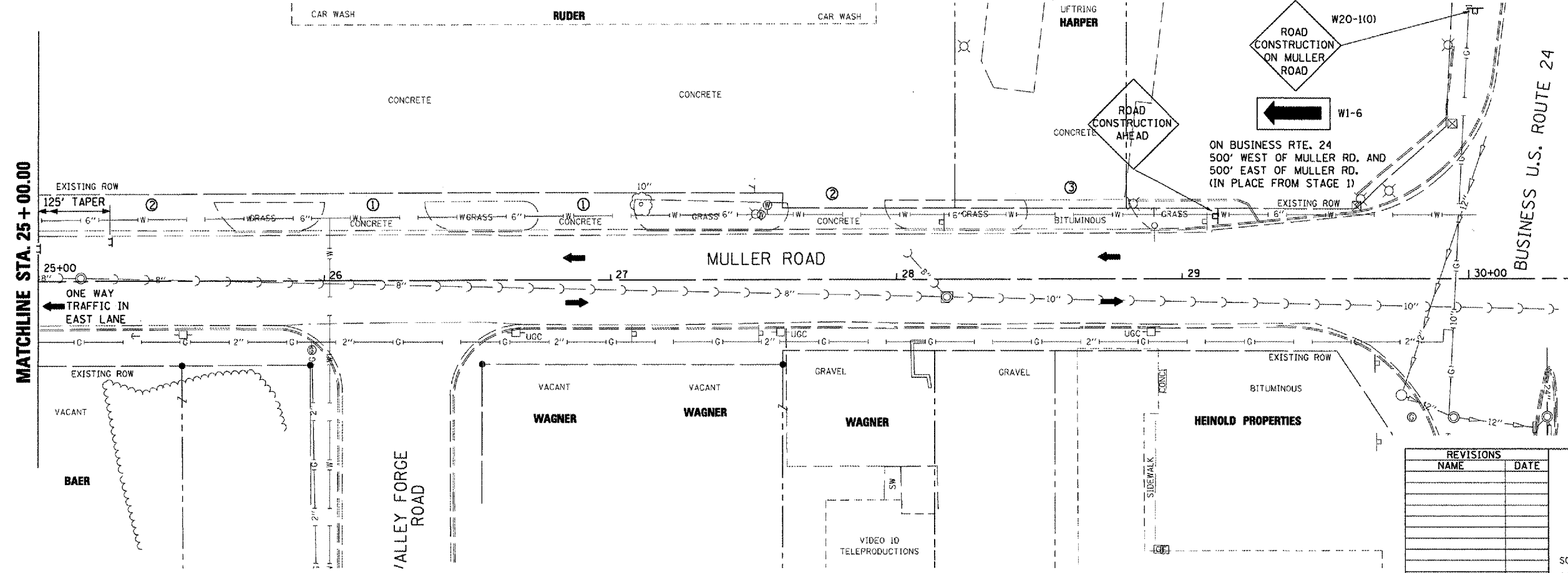
F.A. RTE.	SECTION	COUNTY	TOTAL SHEETS	SHEET NO.
MS 7660	05-00104-00-RS	TAZEWELL	36	12
STA.	TO STA.			
FED. ROAD DIST. NO.	ILLINOIS FED. AID PROJECT			



- PRE-STAGE A WORK**
- ① ② DRIVEWAYS CANNOT BE CLOSED CONCURRENTLY- CONSTRUCT ①, REOPEN ①, THEN CONSTRUCT ②
  - ③ DRIVEWAYS TO BE CONSTRUCTED ONE HALF AT A TIME ALLOWING DRIVEWAY USE AT ALL TIMES

- STAGE 1A WORK**
- ACCESS TO REMAIN OPEN DURING STAGE 1A
  - PAVEMENT REMOVAL AND REPLACEMENT PER PLANS IN STAGE 1A

- STAGE 1B WORK**
- PAVEMENT WORK TO BE COMPLETED IN STAGE 1B



REVISIONS	
NAME	DATE

ILLINOIS DEPARTMENT OF TRANSPORTATION  
**MULLER ROAD IMPROVEMENTS**  
**MAINTENANCE OF TRAFFIC**  
**STAGE 2**

SCALE: AS SHOWN  
 DATE 11-14-07  
 DRAWN BY DLC  
 CHECKED BY KMC

**MULLER - MAINTENANCE OF TRAFFIC STAGE 2 - STA. 20+00 TO STA. 29+60**

PLOT DATE = 11/14/07  
 FILE NAME = 11/14/07  
 USER NAME = KMC