

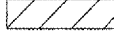


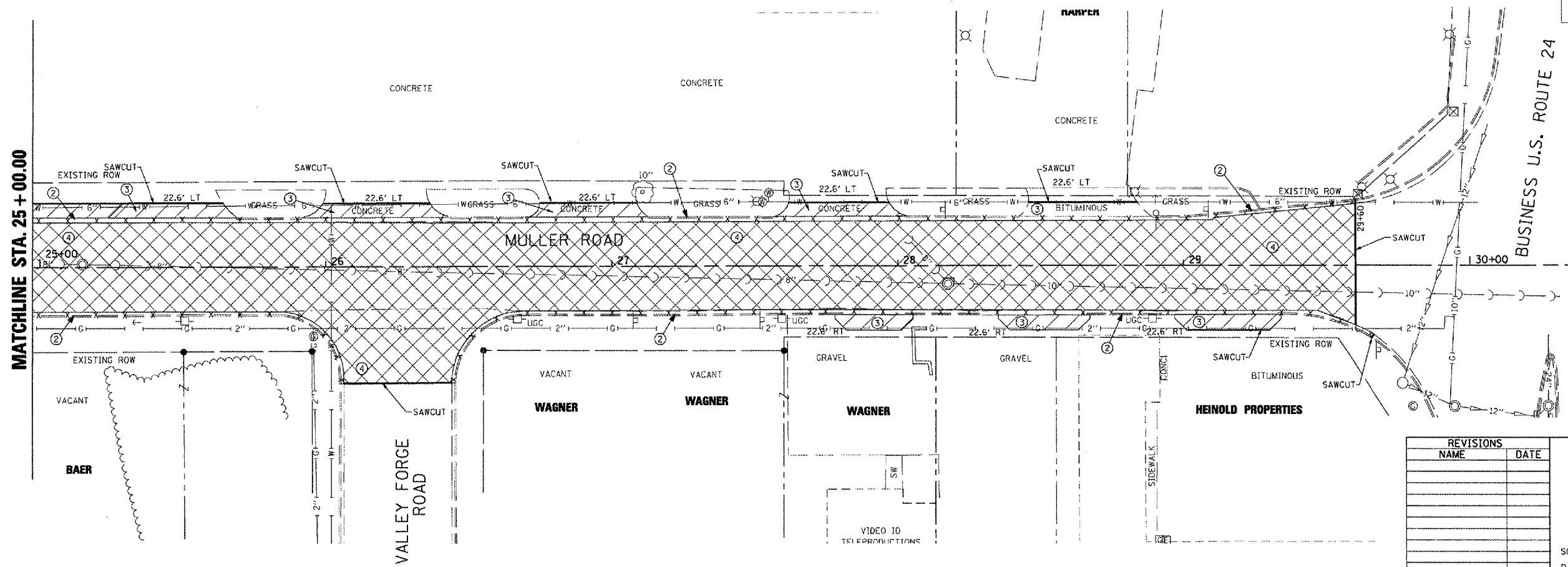
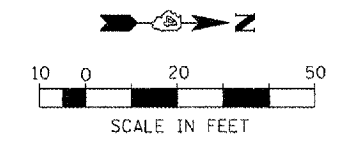
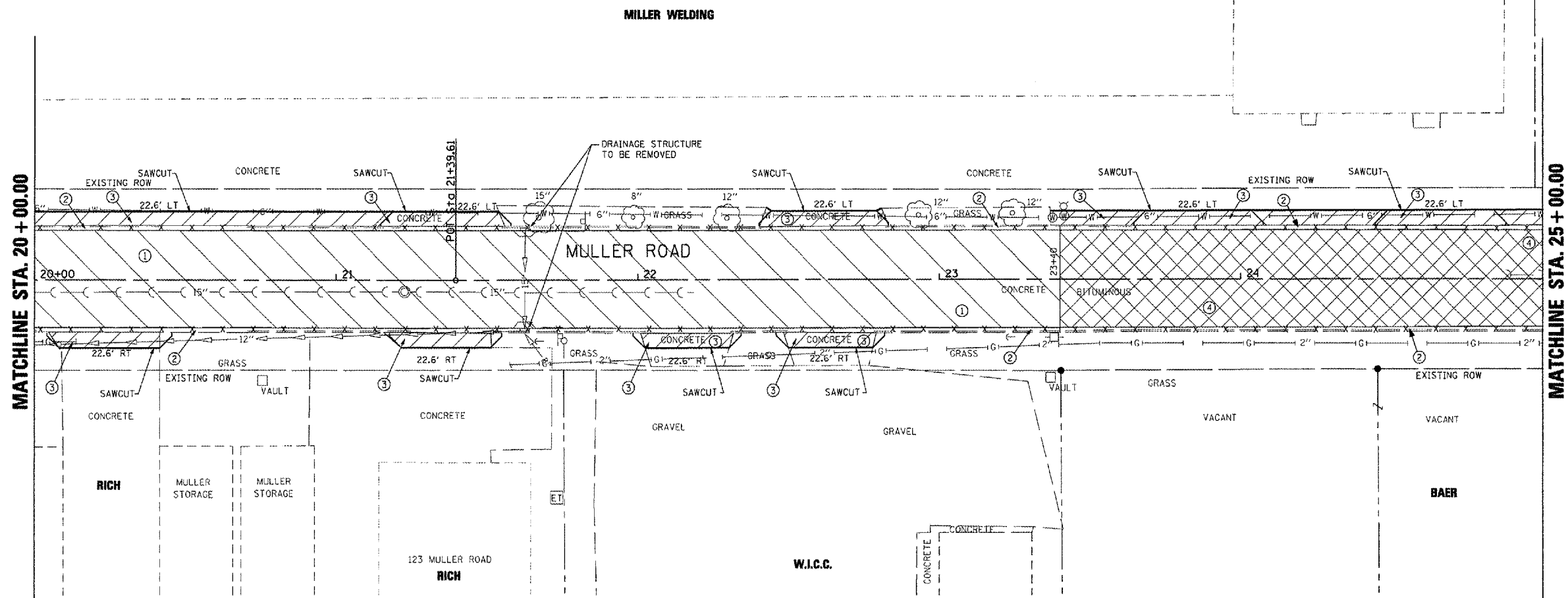


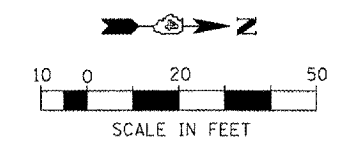
| | | | | |
|---------------------|----------------|---------------------------|--------------|-----------|
| F.A. RTE. | SECTION | COUNTY | TOTAL SHEETS | SHEET NO. |
| MS 7660 | 05-00104-00-RS | TAZEWELL | 36 | 14 |
| STA. | | TO STA. | | |
| FED. ROAD DIST. NO. | | ILLINOIS FED. AID PROJECT | | |

REMOVAL LEGEND

-  ① PAVEMENT REMOVAL
-  ② CCC&G REMOVAL
-  ③ DRIVEWAY PAVEMENT REMOVAL
-  ④ HMA SURFACE REMOVAL, 2"
-  INDICATES SAWCUT NEEDED



NOTE: SEE STATUS OF UTILITIES TO BE ADJUSTED FOR FURTHER INFORMATION ON UTILITY CONFLICTS.



| REVISIONS | |
|-----------|------|
| NAME | DATE |
| | |
| | |
| | |
| | |
| | |
| | |
| | |
| | |
| | |
| | |

ILLINOIS DEPARTMENT OF TRANSPORTATION

**MULLER ROAD IMPROVEMENTS
REMOVAL PLAN**

SCALE: AS SHOWN
DATE 11-14-07

DRAWN BY: DLC
CHECKED BY: KMC

PLOT DATE = 8/24/07
FILE NAME = 871114
PLOT SCALE = 1/8"=1'-0"
USER NAME = J.ROBERTS