

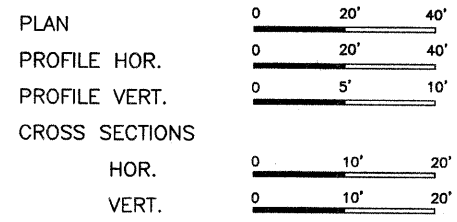
ROUTE	SECTION	COUNTY	TOTAL SHEETS	SHEET NO.
C.H. 8	04-00112-00-BR	RICHLAND	14	1
CONTRACT NO. 95515		ILLINOIS	PROJECT BROS-159(45)	

STATE OF ILLINOIS  
DEPARTMENT OF TRANSPORTATION  
DIVISION OF HIGHWAYS  
PLANS FOR PROPOSED  
HIGHWAY BRIDGE PROGRAM  
SECTION 04-00112-00-BR RICHLAND COUNTY  
PROJECT BROS-159(45)  
JOB NO. C-97-060-07  
C.H. 8

Joint Utility Locating Information for Excavators  
JULIE 1-800-892-0123

INDEX OF SHEETS

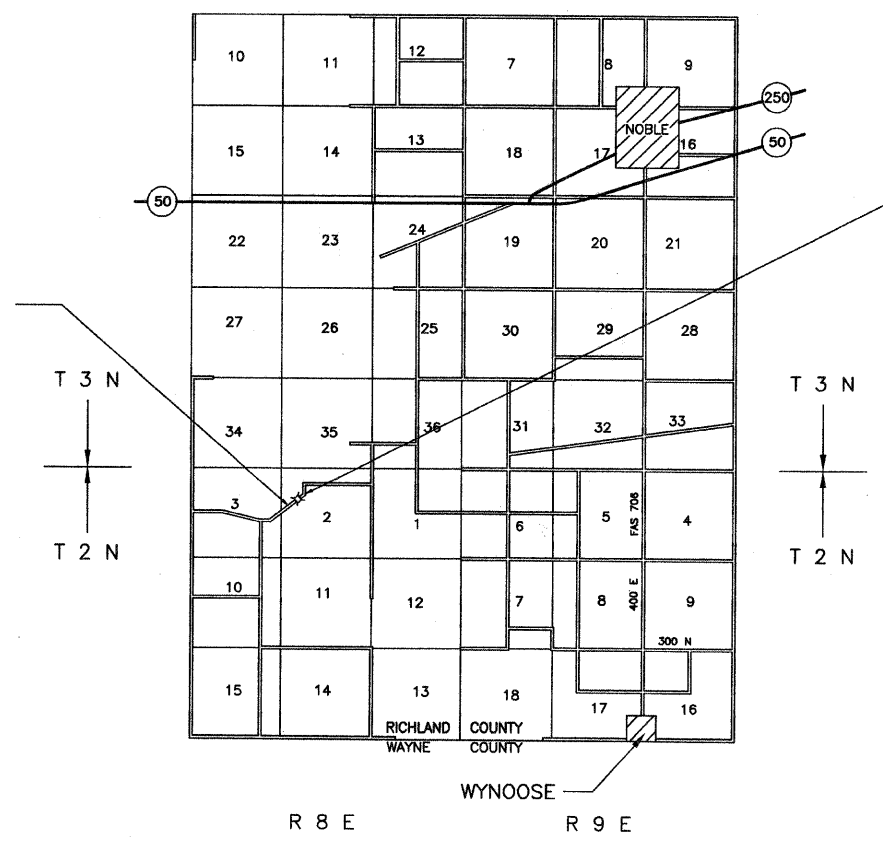
SHEET	ITEM
1	COVER SHEET
2	SUMMARY OF QUANTITIES
3	ROADWAY PLAN AND PROFILE
4	GENERAL PLAN AND ELEVATION
5	SUPERSTRUCTURE
6	RAILING DETAILS
7	WEST ABUTMENT
8	EAST ABUTMENT
9	BORINGS
10	EROSION CONTROL
11-14	CROSS SECTIONS



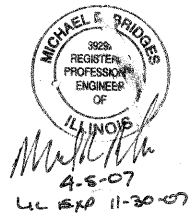
- STANDARD DRAWINGS
- STANDARD 000001-05
  - STANDARD 280001-04
  - STANDARD 515001-02
  - STANDARD 666001
  - STANDARD 701901
  - STANDARD BLR 21-7
  - STANDARD BLR 22-5

SECTION 04-00112-00-BR BEGINS STA. 1+50.00

SINGLE SPAN PRECAST PRESTRESSED CONCRETE DECK BEAM BRIDGE  
 98'-0" BK- BK. ABUTMENTS  
 STEEL PILE SPILLTHROUGH ABUTMENTS  
 24' DECK  
 EXISTING STRUCTURE NO. 080-3024  
 PROPOSED STRUCTURE NO. 080-3213



SECTION 04-00112-00-BR ENDS STA. 11+50.00



CHARLESTON ENGINEERING INC.  
105 N. KITCHELL  
P.O. BOX 397  
OLNEY, ILLINOIS 62450  
PH. 618-392-0736

CONTRACT NO. 95515

RURAL MAJOR COLLECTOR  
ADT = 100  
DESIGN SPEED = 30 M.P.H.

APPROVED	<u>April 5 2007</u> <i>Danny A. Colwell</i> COUNTY ENGINEER
PASSED	<u>April 10 2007</u> <i>Muhammad Karim</i> DISTRICT SEVEN ENGINEER OF LOCAL ROADS AND STREETS
Releasing For Bid Based on Limited Review	<u>April 10 2007</u> <i>Christina M. Read</i> DEPUTY DIRECTOR OF HIGHWAYS REGION FOUR ENGINEER
STATE OF ILLINOIS DEPARTMENT OF TRANSPORTATION	

NET LENGTH SECTION 04-00112-00-BR = 1000.00 Ft. = 0.189 Mi.