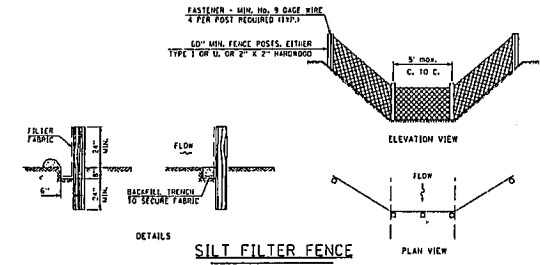
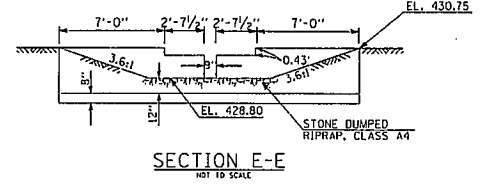
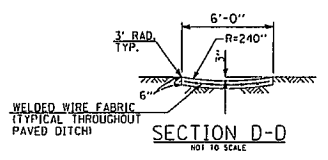
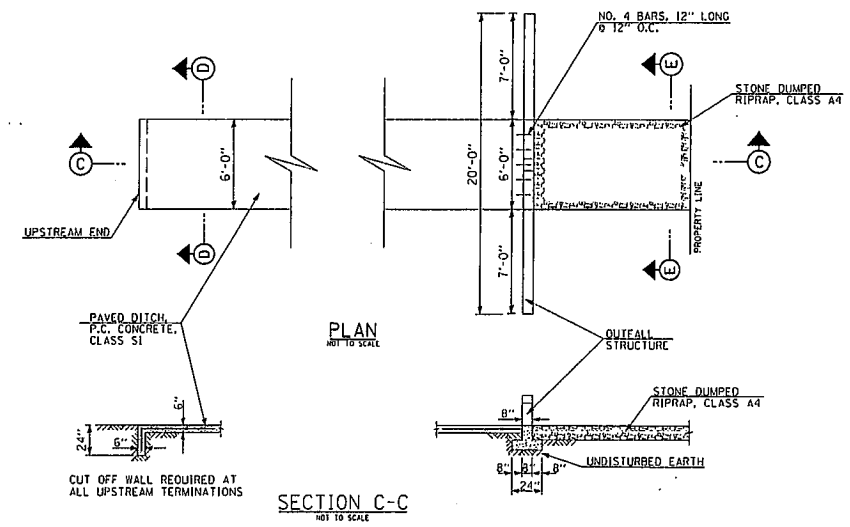


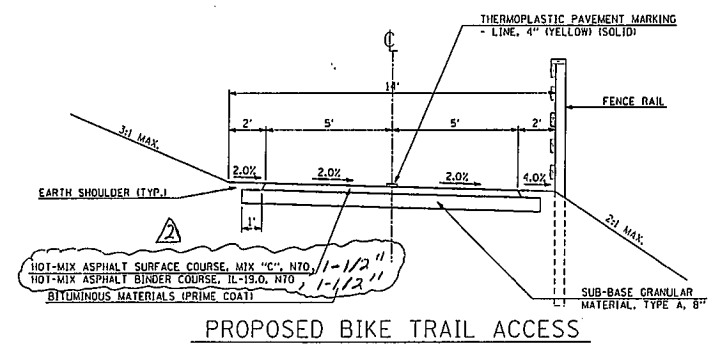
F.A. RTE.	SECTION	COUNTY	TOTAL SHEETS	SHEET NO.
	03-00026-00-PK 06-00026-01-MS	MADISON	51	3



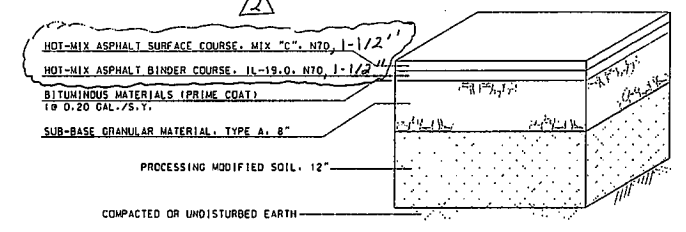
- ALL SILT FENCES SHALL BE PLACED AS CLOSE TO THE CONTOUR AS POSSIBLE, WITH THE ENDS EXTENDING UPSLOPE. THE AREA BELOW THE FENCE MUST BE UNDISTURBED OR STABILIZED.
- WOOD POSTS WILL BE OF SOUND QUALITY WOOD WITH A MIN. CROSS SECTIONAL AREA OF 3.0 SQ. IN. STEEL POSTS WILL BE STANDARD T AND U SECTIONS WEIGHING NOT LESS THAN 1.0 LBS./L.F. THE MAX. SPACING WILL BE 5 FEET, WHEN WIRE BACKING IS USED, THE MAX. SPACING MAY BE INCREASED TO 10 FEET. THE POSTS SHALL BE DRIVEN A MIN. OF 24\"/>



PAVED DITCH & OUTFALL STRUCTURE
NOT TO SCALE
STA. 10+08.50 TO STA. 11+53

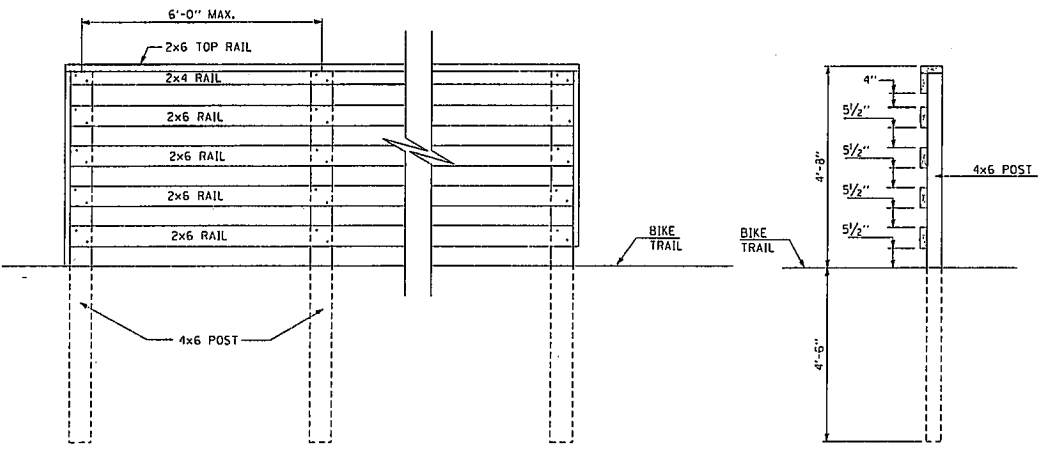


Revised 3.7.08

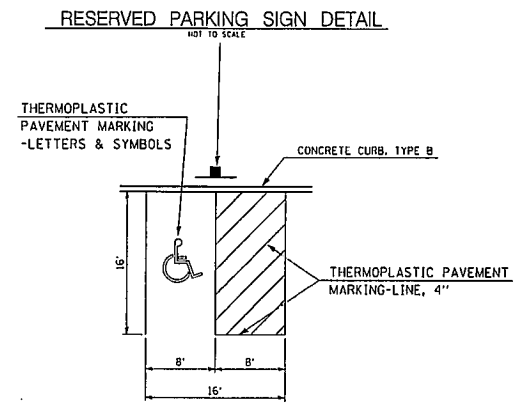
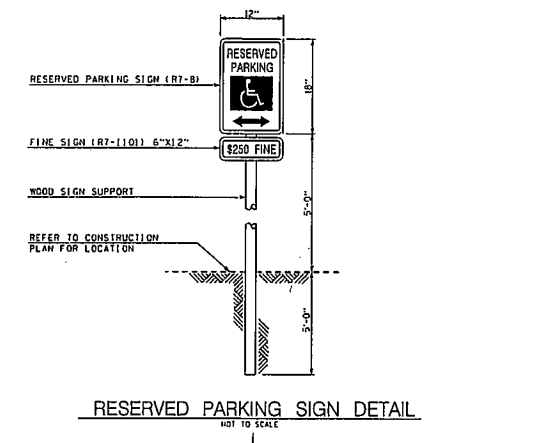


TYPICAL PARKING LOT SECTION
NOT TO SCALE

- THE FOLLOWING EROSION CONTROL MEASURES SHALL BE PROVIDED BY THE CONTRACTOR:
- PERIMETER EROSION BARRIER (SILT FENCE) SHALL BE ERECTED PRIOR TO EXCAVATION AND CLEARING IN THE UPSLOPE AREA.
 - THE TEMPORARY EROSION CONTROL SYSTEMS SHALL BE PROPERLY MAINTAINED BY THE CONTRACTOR TO CONTROL SILTATION AT ALL TIMES DURING THE LIFE OF THE CONTRACT.
 - AT ALL TIMES, EROSION CONTROL MEASURES SHALL BE EMPLOYED TO PREVENT SILT FROM LEAVING THE SITE. ALL EROSION CONTROL WORK IS TO BE DONE ACCORDING TO THE CURRENT EDITION OF THE STANDARD SPECIFICATIONS AND THE STORM WATER POLLUTION PREVENTION PLAN.
 - PRIOR TO THE START OF ANY EARTH MOVING OPERATIONS, THE CONTRACTOR SHALL INSURE THAT A STORM WATER POLLUTION PREVENTION PLAN (SWPPP) AND A NOTICE OF INTENT (NOI) HAVE BEEN PREPARED, SIGNED AND FILED BY THE OWNER ACCORDING TO THE REQUIREMENTS OF THE NATIONAL POLLUTION DISCHARGE ELIMINATION SYSTEM (NPDES) PERMIT IL R 10 WHICH AUTHORIZES THE STORM WATER DISCHARGES ASSOCIATED WITH INDUSTRIAL ACTIVITY FROM THIS CONSTRUCTION SITE.
 - ADDITIONAL EROSION PROTECTION DEVICES SHALL BE INSTALLED SHOULD OTHER AREAS OF EROSION IN THE DEVELOPMENT OCCUR, AS DIRECTED BY THE CONSTRUCTION MANAGER.
 - SEEDING SHALL BE APPLIED WITHIN 7 DAYS OF FINAL GRADING IN ALL DISTURBED AREAS.
 - ALL EROSION CONTROL ITEMS SHALL BE REMOVED AND BECOME THE PROPERTY OF THE CONTRACTOR AT THE COMPLETION OF THE CONTRACT, OR AS DIRECTED BY THE RESIDENT ENGINEER.



INSIDE RAIL ELEVATION SECTION A-A
FENCE RAIL DETAILS
STA. 1+11.40 TO STA. 3+67.13



THE FOLLOWING MIXTURE REQUIREMENTS ARE APPLICABLE FOR THIS PROJECT:

MIXTURE USE	SURFACE	BINDER
AC/PC	PG 64-22	PG 64-22
RAP % (MAX)	10	15
DESIGN AIR VOIDS	4.0% @ NDES=70	4.0% @ NDES=70
MIX COMPOSITION (GRADATION MIXTURE)	IL 19.0	IL 19.0
FRICITION AGG	MIXTURE C	MIXTURE B

- STREET AND PAVEMENT CONSTRUCTION NOTES:
- ALL STREET WORK IS TO BE DONE ACCORDING TO THE ILLINOIS DEPARTMENT OF TRANSPORTATION STANDARD SPECIFICATIONS FOR ROAD AND BRIDGE CONSTRUCTION, ADOPTED JANUARY 1, 2007 AND LATEST REVISIONS.
 - ALL CONCRETE PAVEMENT AND DRIVEWAYS SHALL BE POURED SO THAT NO FINISHED PANEL EXCEEDS 15' ALONG ANY EDGE, UNLESS SHOWN OTHERWISE.
 - ALL CONSTRUCTION JOINTS SHALL BE TIED USING #6 BARS, 30" LONG AT 24" O.C..
 - SAWED TRANSVERSE JOINTS (1/8" X 2") SHALL BE CREATED AT 15' INTERVALS. BARS ARE NOT REQUIRED. JOINTS TO BE SEALED WITH HOT POURED JOINT SEALER IN ALL CONCRETE CONSTRUCTION.
 - EMBANKMENT SHALL BE PLACED AS REQUIRED IN SECTION 205 OF THE ILLINOIS DEPARTMENT OF TRANSPORTATION STANDARD SPECIFICATIONS FOR ROAD AND BRIDGE CONSTRUCTION, ADOPTED JANUARY 1, 2007 AND LATEST REVISIONS. CONTRACTOR SHALL SUBMIT TO THE RESIDENT ENGINEER DOCUMENTATION OF COMPACTION TESTS FOR WRITTEN APPROVAL OF SAID COMPACTION PRIOR TO CONSTRUCTION OF ANY PAVEMENT/SIDEWALK.
 - CUT SECTIONS SHALL BE PROOF ROLLED AND APPROVED BY THE RESIDENT ENGINEER PRIOR TO CONSTRUCTION OF ANY PAVEMENT/SIDEWALK.

21 North Broadway
Suite 100
St. Louis, Missouri 63102
Ph: (314) 241-8888
Fax: (314) 541-0125



LEWIS AND CLARK
MEMORIAL TOWER
HARTFORD, ILLINOIS 62648

SHEET TITLE: DETAILS

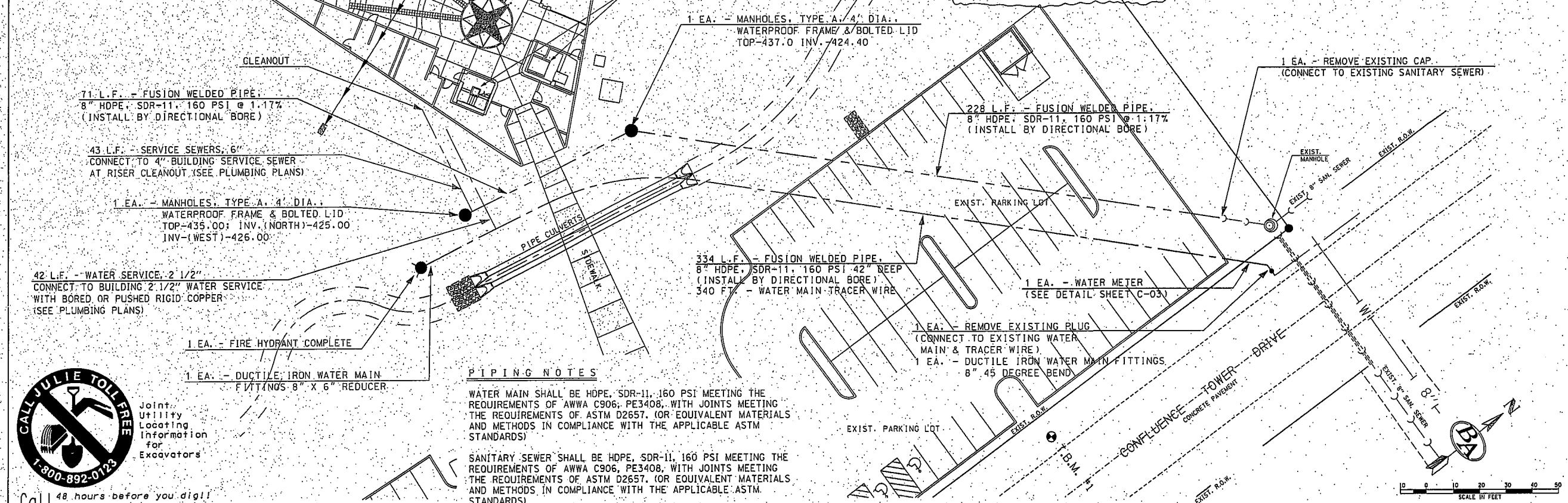
REV. NO.	DATE	REMARKS

KENNEDY PROJECT NO. 10-02048

ISSUE DATE

SHEET NO. C-02

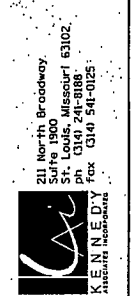
UNDERGROUND FACILITIES, STRUCTURES, AND UTILITIES HAVE BEEN PLOTTED FROM AVAILABLE SURVEYS AND RECORDS AND, THEREFORE, THEIR LOCATIONS MUST BE CONSIDERED APPROXIMATE ONLY. THERE MAY BE OTHERS THE EXISTENCE OF WHICH IS AT PRESENT NOT KNOWN. VERIFICATION OF THE LOCATIONS OF UNDERGROUND UTILITIES, SHOWN OR NOT SHOWN, WILL BE THE RESPONSIBILITY OF THE CONSTRUCTION CONTRACTOR.



CALL JULIE TOLLFREE
 1-800-892-0123
 Joint Utility Locating Information for Excavators
 Call 48 hours before you dig!!
 (Excluding Sat., Sun. & Holidays)

PIPING NOTES
 WATER MAIN SHALL BE HDPE, SDR-11, 160 PSI MEETING THE REQUIREMENTS OF AWWA C906, PE3408, WITH JOINTS MEETING THE REQUIREMENTS OF ASTM D2657. (OR EQUIVALENT MATERIALS AND METHODS IN COMPLIANCE WITH THE APPLICABLE ASTM STANDARDS)
 SANITARY SEWER SHALL BE HDPE, SDR-11, 160 PSI MEETING THE REQUIREMENTS OF AWWA C906, PE3408, WITH JOINTS MEETING THE REQUIREMENTS OF ASTM D2657. (OR EQUIVALENT MATERIALS AND METHODS IN COMPLIANCE WITH THE APPLICABLE ASTM STANDARDS)

F.A. RTE.	SECTION	COUNTY	TOTAL SHEETS	SHEET NO.
	03-00026-00-PK 06-00026-01-MS	MADISON	51	8



**LEWIS AND CLARK
 MEMORIAL TOWER**
 HARTFORD, ILLINOIS 62046

SHEET TITLE:
**WATER LINE &
 SANITARY SEWER
 PLAN AND PROFILE**

REV. NO.	DATE	REMARKS

KENNEDY PROJECT NO
 10-02048

ISSUE DATE

SHEET NO.
C-07

211 N. Broadway
Suite 1900
St. Louis, MO 63102
(314) 241-3188
FAX (314) 241-0125

KAI

**LEWIS AND CLARK MEMORIAL TOWER
VILLAGE OF HARTFORD, ILLINOIS
HARTFORD, ILLINOIS 62049**

SHEET TITLE:
PHASE 2A SIT PLAN

REV. NO.	REMARKS	DATE

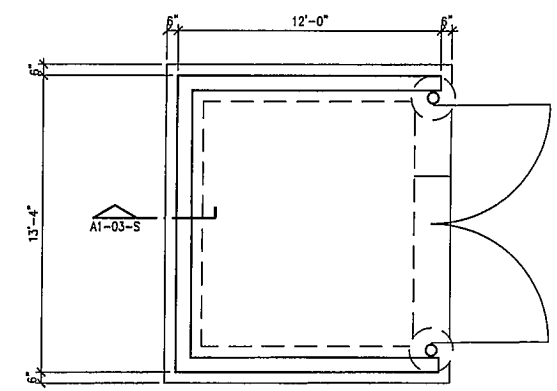
KENNEDY PROJECT NO
KAI# 10-02048

ISSUE DATE
12-JULY-05

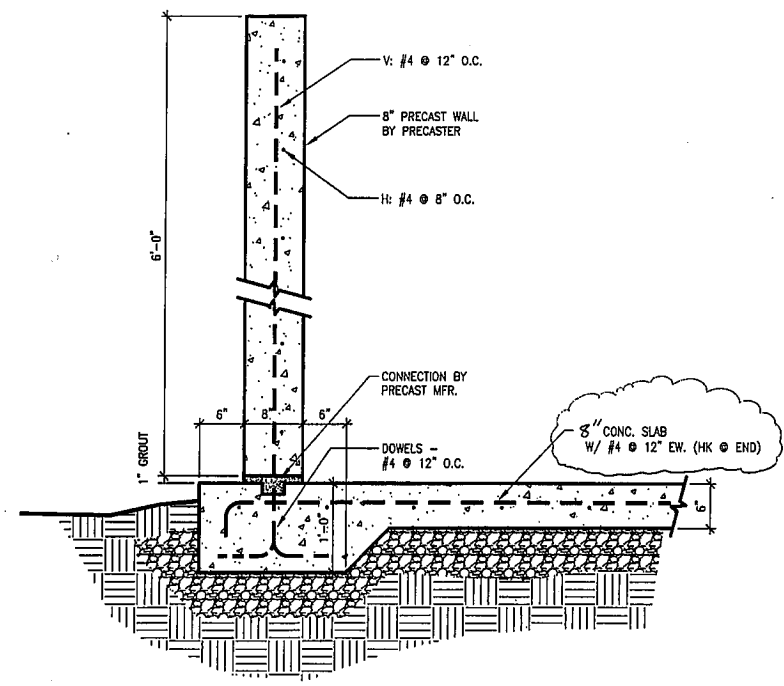
SHEET NO

A1-03

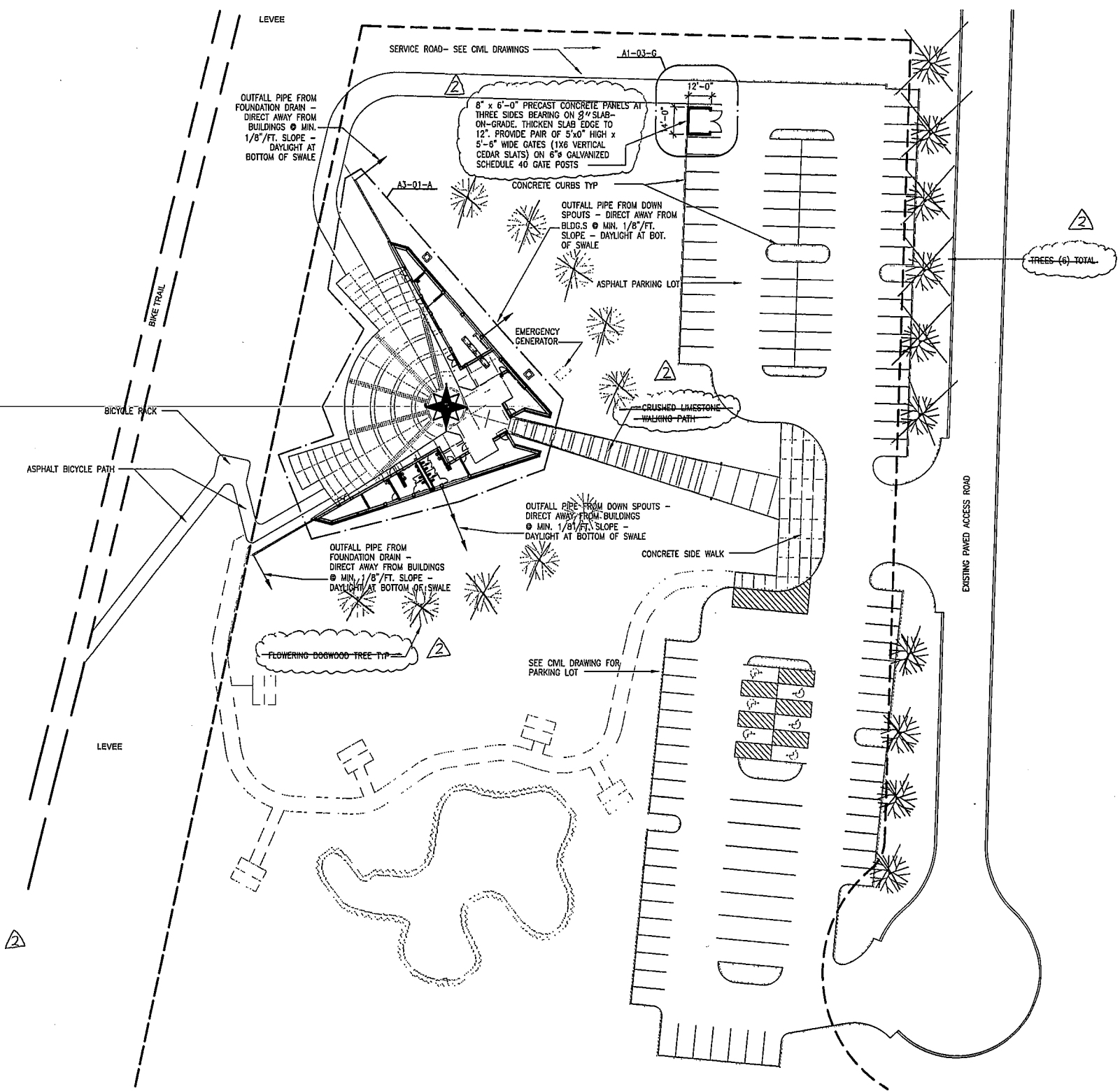
© 2005 KENNEDY ASSOCIATES INCORPORATED



G DUMPSTER ENCLOSURE
1/4"=1'-0"



S DUMPSTER ENCLOSURE
1"=1'-0"



A SITE PLAN
1/32" = 1'-0"
PLAN NORTH
Revised 3-3-08

F.A. RTE.	SECTION	COUNTY	TOTAL SHEETS	SHEET NO.
	03-00026-00-PK	MADISON	51	23
	06-00026-01-MS	97331		

FEDERAL AID PROJECT

Note: Precaster is responsible for coordinating fabrication of concrete panels with location of all electrical, mechanical, and plumbing devices. Panels should be designed to include all knockouts and voids required for ductwork and junction boxes. They should also include conduit for the wiring of all such devices.

Note: Remove temporary elevator machine enclosure as required. (Temporary enclosure shall remain as long as possible to reduce the chances of damaging elevator equipment.)

211 N. Broadway
Suite 1900
St. Louis, MO 63102
(314) 241-8188
FAX (314) 241-0125

KAI

**LEWIS AND CLARK MEMORIAL TOWER
VILLAGE OF HARTFORD, ILLINOIS
HARTFORD, ILLINOIS 62049**

SHEET TITLE:
**FLOOR PLAN AND
ENLARGED RESTROOM
PLAN**

REV. NO.	DATE	REMARKS
1	11/18/06	ISSUE
2		DOT REV.

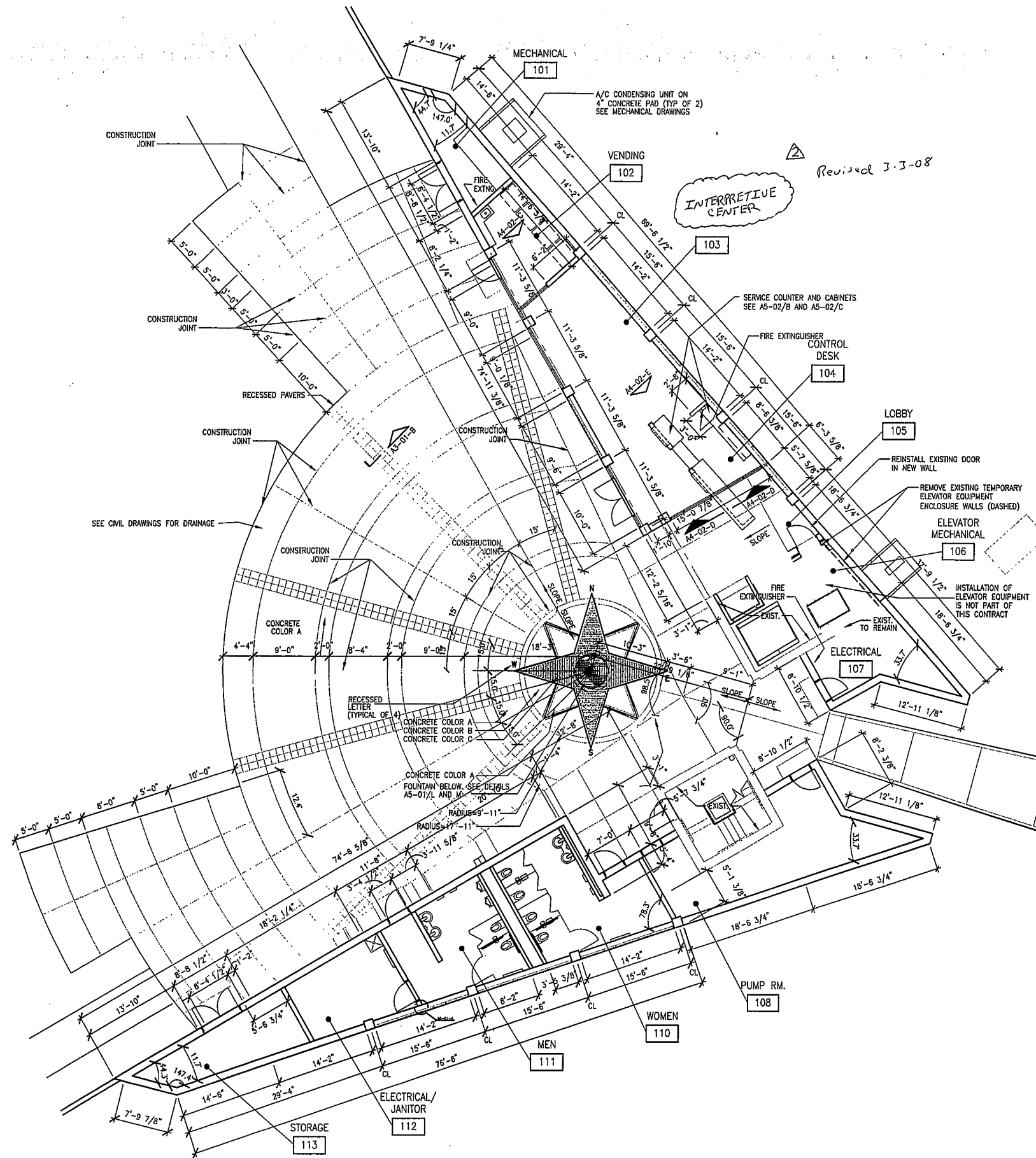
KENNEDY PROJECT NO
KAI# 10-02048

ISSUE DATE
12-JULY-06

SHEET NO

A3-01

© 2006 KENNEDY ASSOCIATES INCORPORATED

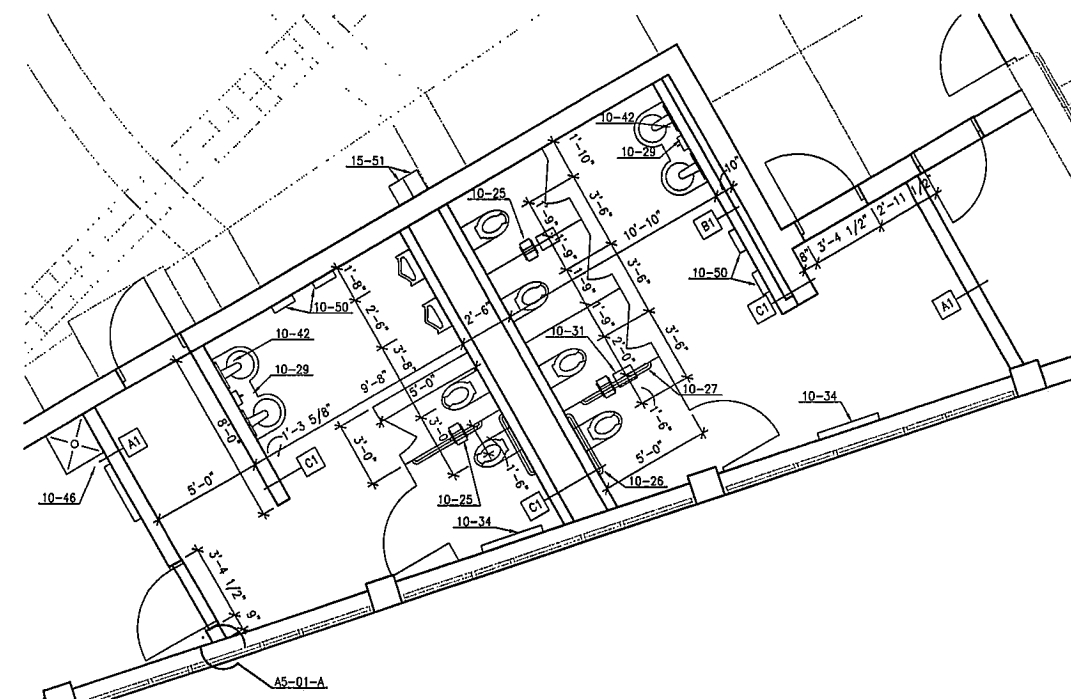


(A) FLOOR PLAN
1/8" = 1'-0"



KEYED NOTES:

- 04-63 8"x8" WALL VENTS @ 8" ABOVE FLOOR & 8" (MIN.) BELOW ROOF PANELS.
- 10-25 ACCESSIBLE TOILET TISSUE DISPENSER
- 10-26 36" GRAB BAR
- 10-27 42" GRAB BAR
- 10-28 ACCESSIBLE SOAP DISPENSER
- 10-31 ACCESSIBLE SANITARY NAPKIN DISPOSAL
- 10-34 DIAPER CHANGING TABLE
- 10-42 MIRROR
- 10-46 UTILITY SHELF WITH HOOKS
- 10-50 ELECTRIC HAND DRYER
- 15-51 DRINKING FOUNTAIN



(B) ENLARGED RESTROOM PLAN
1/4" = 1'-0"



F.A. RITE	SECTION	COUNTY	TOTAL SHEETS	SHEET NO.
	03-00026-00-PK 06-00026-01-MS	MADISON 97331	51	25

FEDERAL AID PROJECT

211 N. Broadway
Suite 1500
St. Louis, MO 63102
(314) 241-8188
FAX (314) 241-0125

KAI

LEWIS AND CLARK MEMORIAL TOWER
VILLAGE OF HARTFORD, ILLINOIS
HARTFORD, ILLINOIS 62049

SHEET TITLE:
REFLECTED CEILING
PLAN

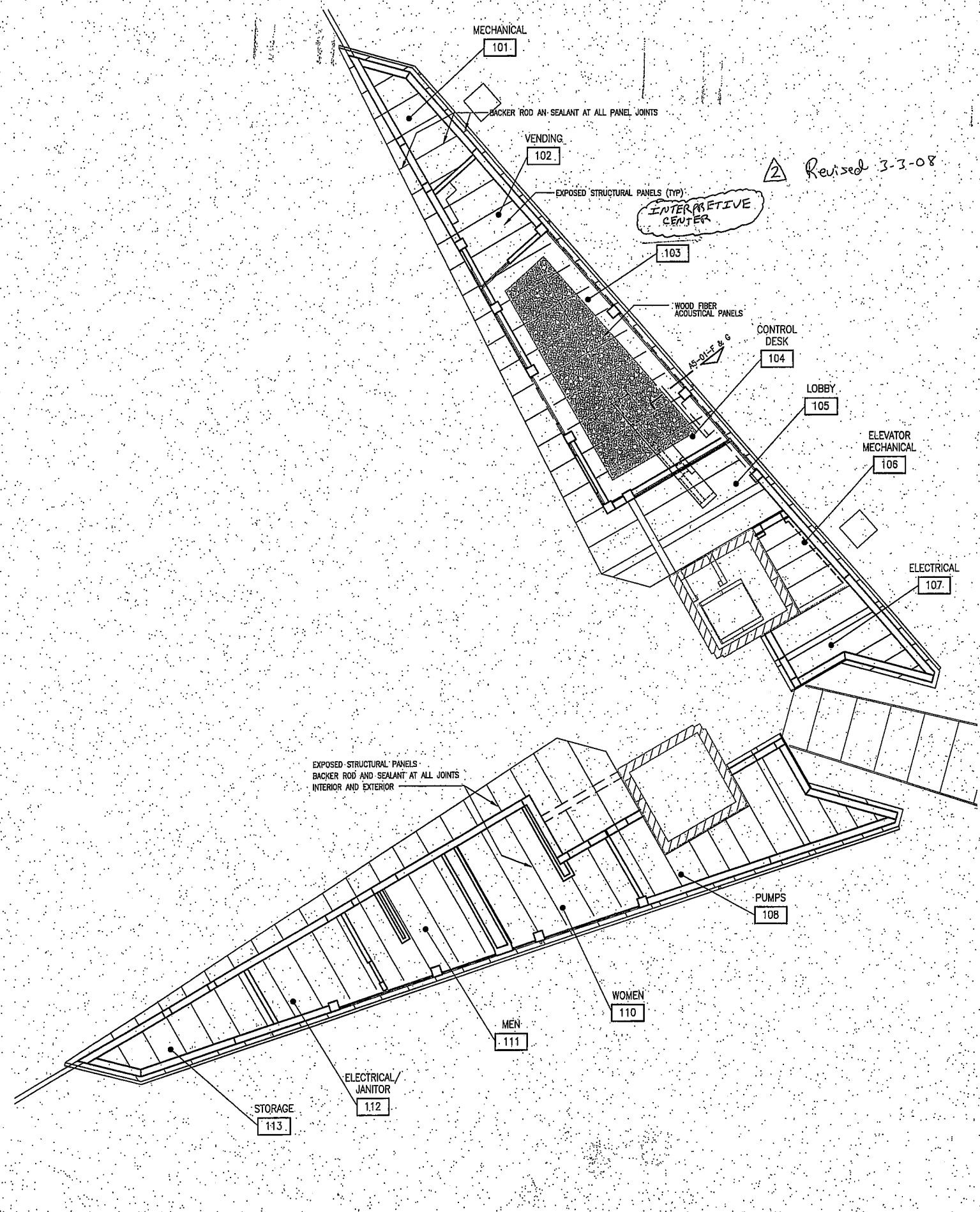
REV. NO.	DATE	REMARKS
1	11/9/06	
2		
3		

KENNEDY PROJECT NO
KAI-10-02048

ISSUE DATE:
12-JULY-06

SHEET NO

A3-03



A REFLECTED CEILING PLAN
1/8" = 1'-0"

C SECTION THRU SOUTH TOWER
1" = 10'-0"

D SECTION THRU NORTH TOWER
1" = 10'-0"

Drawing Stamp Information

211 N. Broadway
Suite 1900
St. Louis, MO
63102
(314) 241-8188
FAX (314) 241-0725



LEWIS AND CLARK MEMORIAL TOWER
VILLAGE OF HARTFORD, ILLINOIS
HARTFORD, ILLINOIS 62049

SHEET TITLE:
**GROUND FLOOR
POWER PLAN**

REV. NO.	REMARKS	DATE

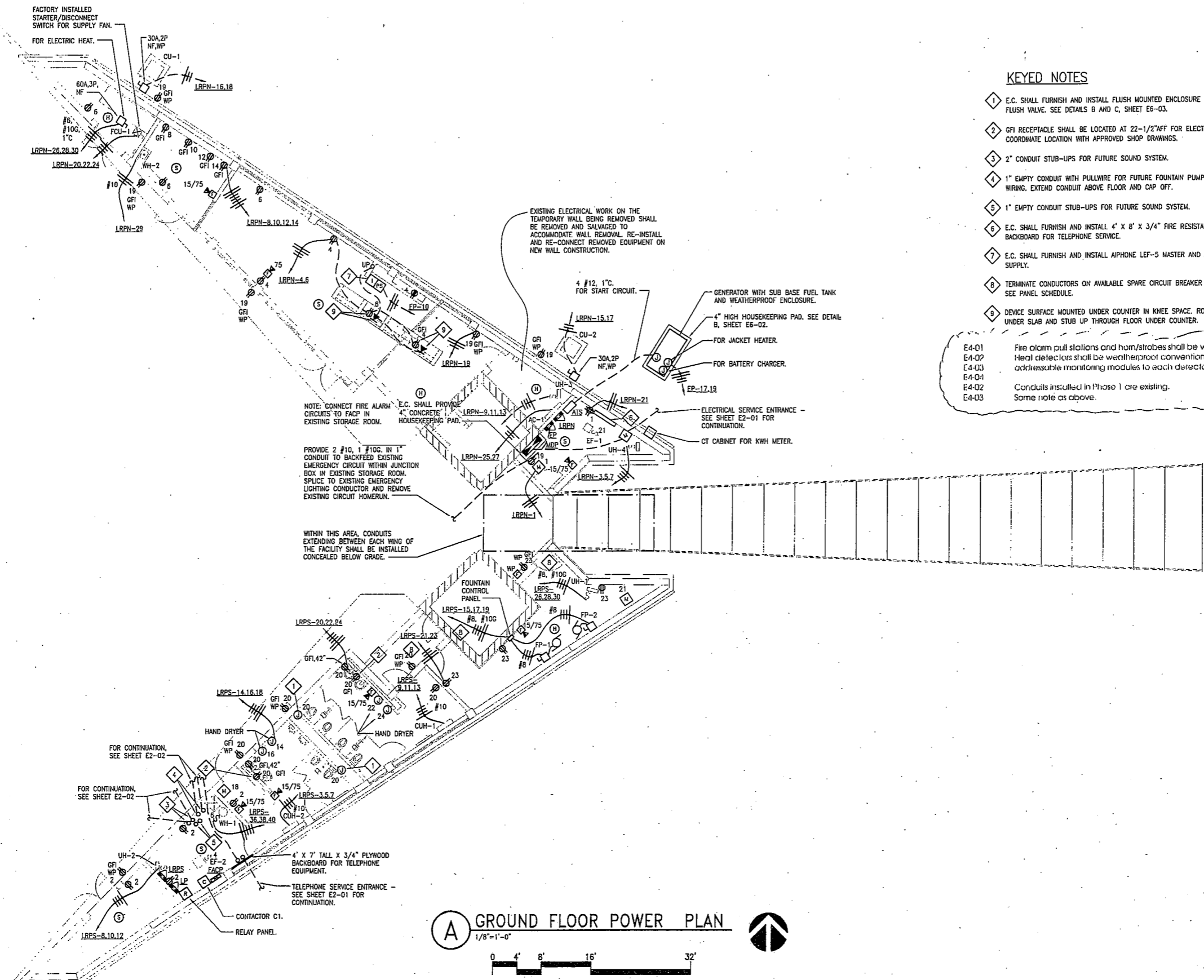
KENNEDY PROJECT NO
KAI= 10-02048

ISSUE DATE
12-JULY-05

SHEET NO

E4-01

© 2005 KENNEDY ASSOCIATES INCORPORATED



KEYED NOTES

- 1 E.C. SHALL FURNISH AND INSTALL FLUSH MOUNTED ENCLOSURE FOR ELECTRONIC FLUSH VALVE. SEE DETAILS B AND C, SHEET E6-03.
 - 2 GFI RECEPTACLE SHALL BE LOCATED AT 22-1/2" AFF FOR ELECTRONIC FAUCETS. COORDINATE LOCATION WITH APPROVED SHOP DRAWINGS.
 - 3 2" CONDUIT STUB-UPS FOR FUTURE SOUND SYSTEM.
 - 4 1" EMPTY CONDUIT WITH PULLWIRE FOR FUTURE FOUNTAIN PUMP POWER SUPPLY WIRING. EXTEND CONDUIT ABOVE FLOOR AND CAP OFF.
 - 5 1" EMPTY CONDUIT STUB-UPS FOR FUTURE SOUND SYSTEM.
 - 6 E.C. SHALL FURNISH AND INSTALL 4' X 8' X 3/4" FIRE RESISTANT PLYWOOD BACKBOARD FOR TELEPHONE SERVICE.
 - 7 E.C. SHALL FURNISH AND INSTALL AIPHONE LEF-5 MASTER AND ASSOCIATED POWER SUPPLY.
 - 8 TERMINATE CONDUCTORS ON AVAILABLE SPARE CIRCUIT BREAKER IN PANEL LRPS. SEE PANEL SCHEDULE.
 - 9 DEVICE SURFACE MOUNTED UNDER COUNTER IN KNEE SPACE. ROUTE CONDUITS UNDER SLAB AND STUB UP THROUGH FLOOR UNDER COUNTER.
- E4-01 Fire alarm pull stations and horn/strobes shall be weatherproof.
E4-02 Heat detectors shall be weatherproof conventional detectors with addressable monitoring modules to each detector.
E4-03 Conduits installed in Phase 1 are existing.
E4-04 Some note as above.

Revised 3-3-08

(A) GROUND FLOOR POWER PLAN
1/8"=1'-0"

