

F.A. RTE.	SECTION	COUNTY	TOTAL SHEETS	SHEET NO.
	03-00026-00-PK 06-00026-01-MS	MADISON	51	23

FEDERAL AID PROJECT

Note: Precaster is responsible for coordinating fabrication of concrete panels with location of all electrical, mechanical, and plumbing devices. Panels should be designed to include all knockouts and voids required for ductwork and junction boxes. They should also include conduit for the wiring of all such devices.

Note: Remove temporary elevator machine enclosure as required. (Temporary enclosure shall remain as long as possible to reduce the chances of damaging elevator equipment.)

2111 N. Broadway
Suite 1900
St. Louis, MO 63102
(314) 241-8188
FAX (314) 241-0125



LEWIS AND CLARK MEMORIAL TOWER
VILLAGE OF HARTFORD, ILLINOIS
HARTFORD, ILLINOIS 62049

SHEET TITLE:
FLOOR PLAN AND ENLARGED RESTROOM PLAN

REV. NO.	DATE	REMARKS
1	11/9/06	DOT REV.

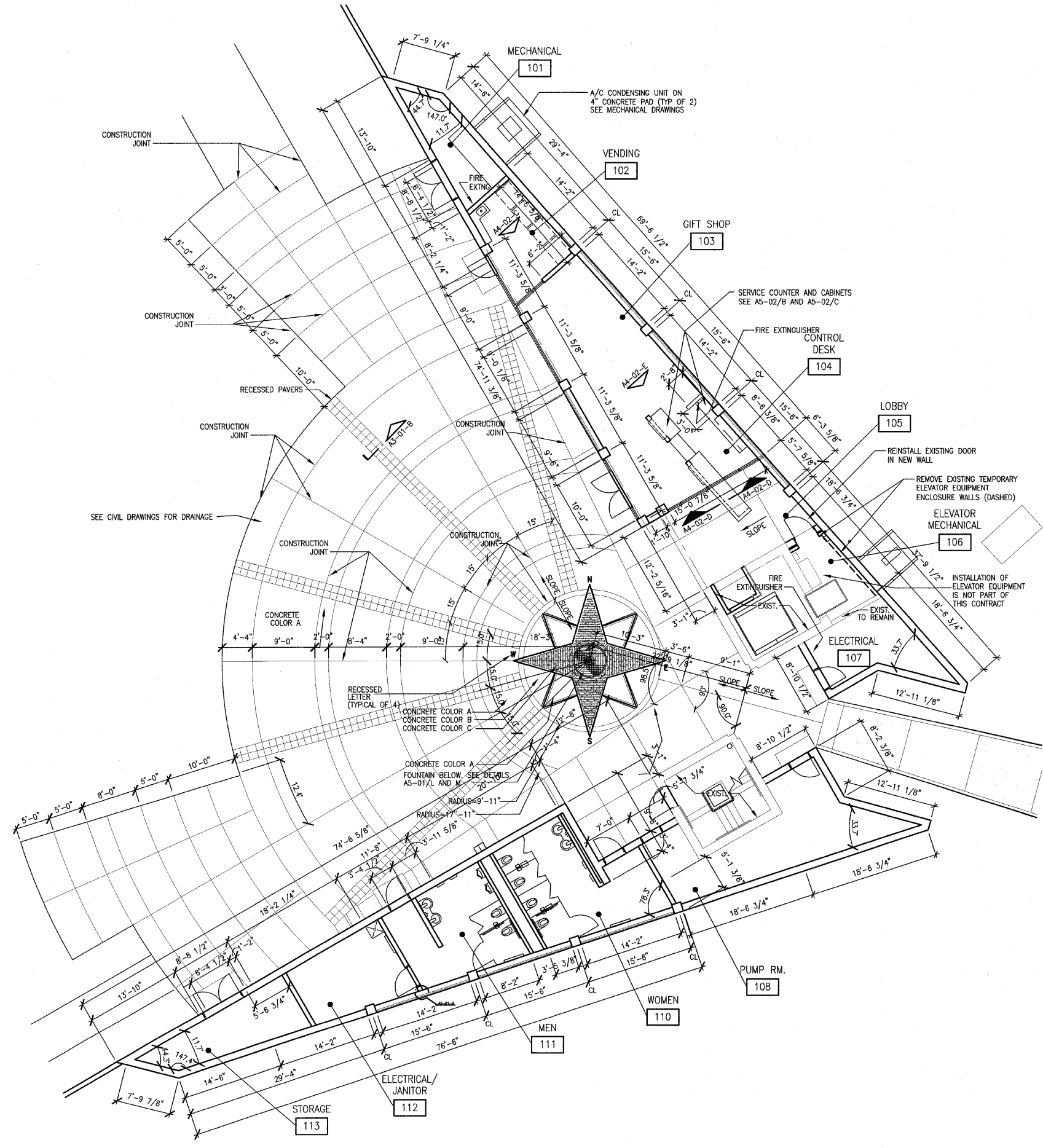
KENNEDY PROJECT NO
KAI# 10-02048

ISSUE DATE
12-JULY-05

SHEET NO

A3-01

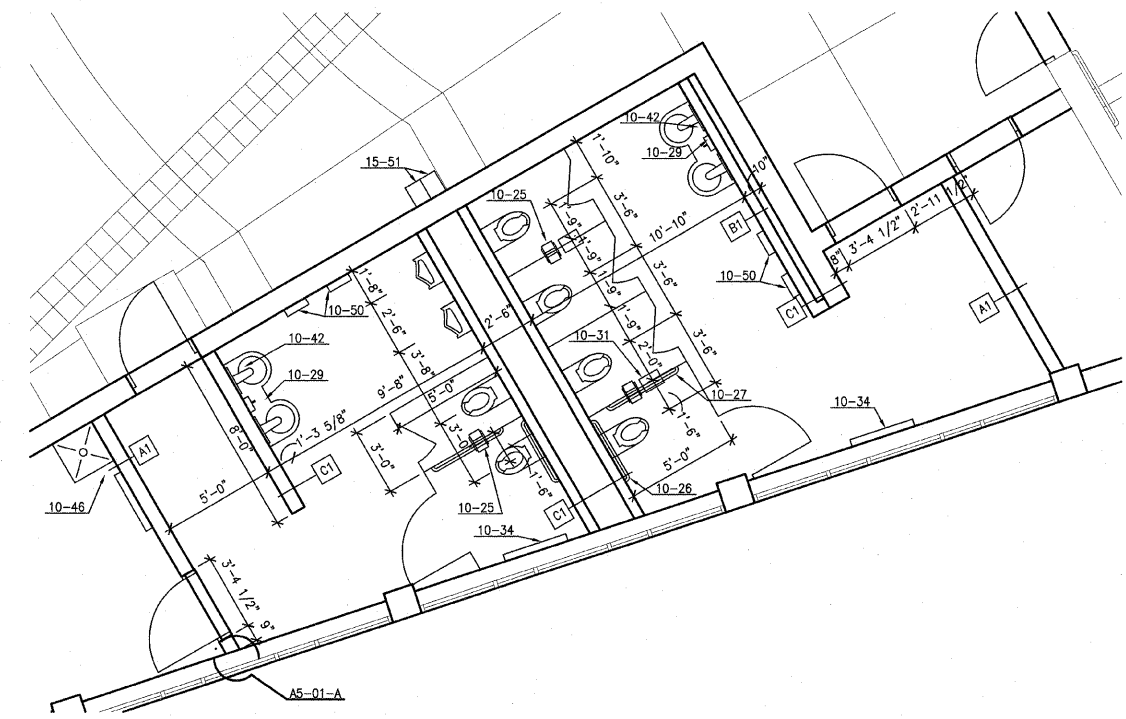
© 2006 KENNEDY ASSOCIATES INCORPORATED



(A) FLOOR PLAN
1/8" = 1'-0"

KEYED NOTES:

- 04-63 8"x8" WALL VENTS @ 8" ABOVE FLOOR & 8" (MIN.) BELOW ROOF PANELS.
- 10-25 ACCESSIBLE TOILET TISSUE DISPENSER
- 10-26 36" GRAB BAR
- 10-27 42" GRAB BAR
- 10-29 ACCESSIBLE SOAP DISPENSER
- 10-31 ACCESSIBLE SANITARY NAPKIN DISPOSAL
- 10-34 DIAPER CHANGING TABLE
- 10-42 MIRROR
- 10-46 UTILITY SHELF WITH HOOKS
- 10-50 ELECTRIC HAND DRYER
- 15-51 DRINKING FOUNTAIN



(B) ENLARGED RESTROOM PLAN
1/4" = 1'-0"