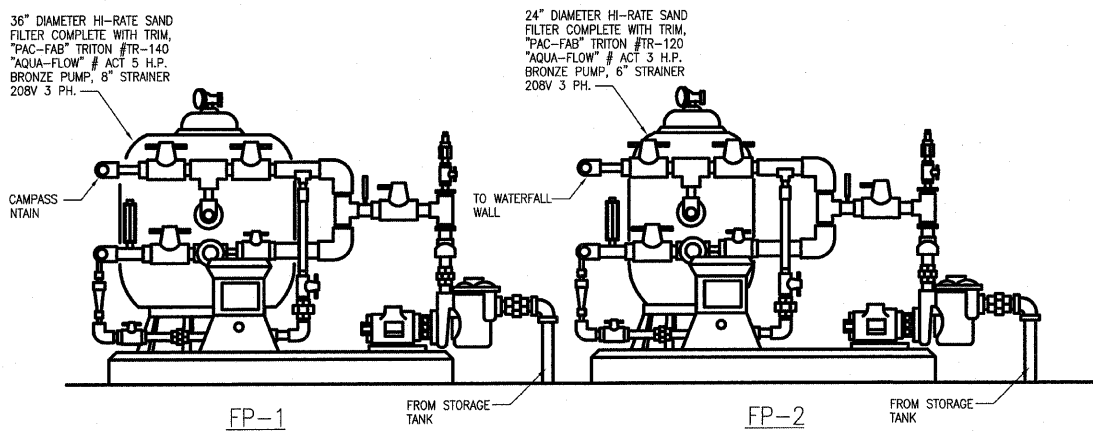


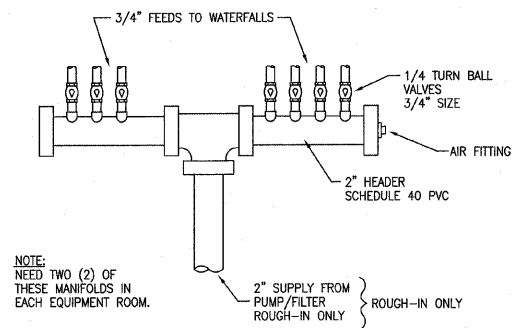
F.A. RTE.	SECTION	COUNTY	TOTAL SHEETS	SHEET NO.
	03-00026-00-PK	MADISON	51	36
	06-00026-01-MS	97331		

FEDERAL AID PROJECT

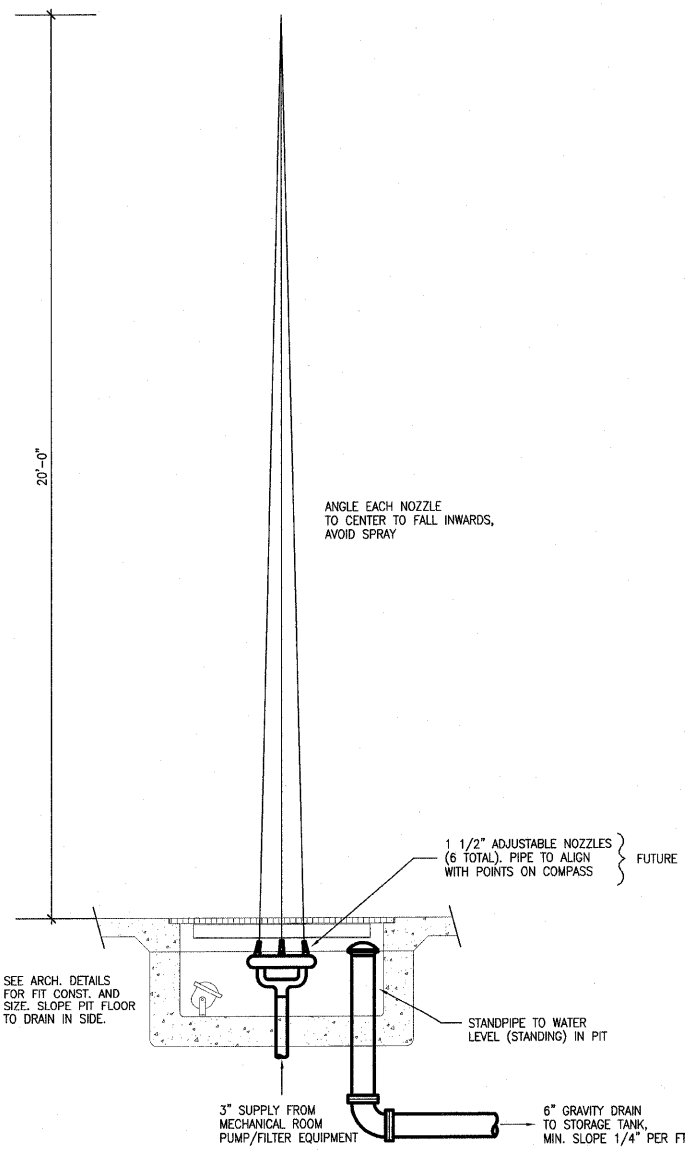
NOTE: PROVIDE AIR FITTING ON SYSTEM TO BLOW OUT FOR FREEZING PROTECTION.



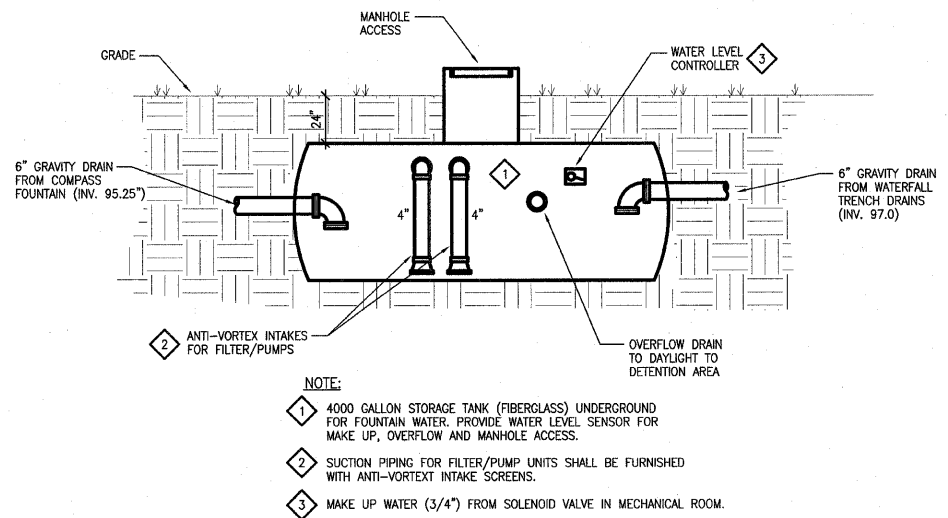
A FUTURE FILTER PUMP PIPING ARRANGEMENT
NOT TO SCALE



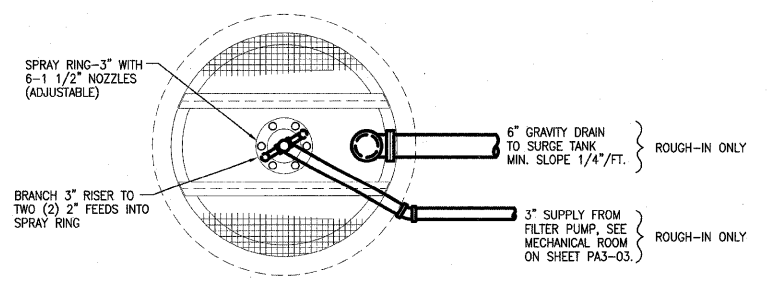
C FUTURE FOUNTAIN MANIFOLD ARRANGEMENT
NOT TO SCALE



E FOUNTAIN SECTION
1/2"=1'-0"



D SCHEMATIC PIPING OF STORAGE TANK (ROUGH-IN ONLY)
NOT TO SCALE



F FOUNTAIN PLAN
1/2"=1'-0"

211 N. Broadway
Suite 1900
St. Louis, MO 63102
(314) 241-8188
FAX (314) 241-0125

KAI

**LEWIS AND CLARK MEMORIAL TOWER
VILLAGE OF HARTFORD, ILLINOIS
HARTFORD, ILLINOIS 62049**

SHEET TITLE:
**FOUNTAIN ISOMETRIC &
DETAILS-
PLUMBING**

REV. NO.	REMARKS	DATE

KENNEDY PROJECT NO
KAI# 10-02048

ISSUE DATE
12-JULY-05

SHEET NO

P3-04