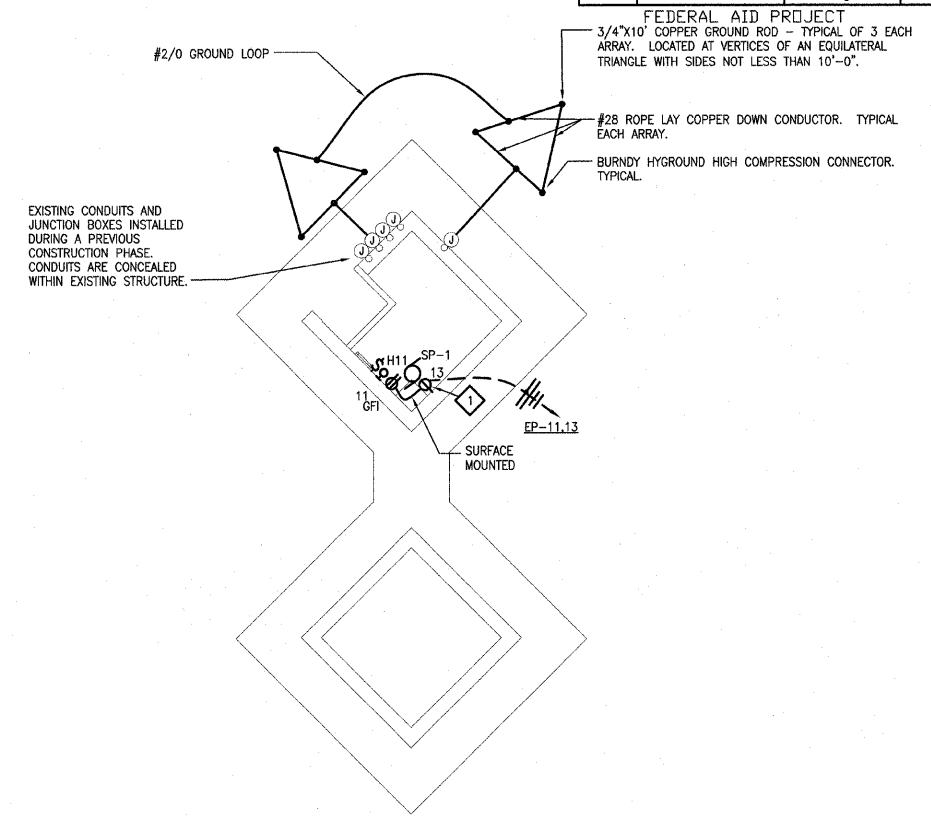


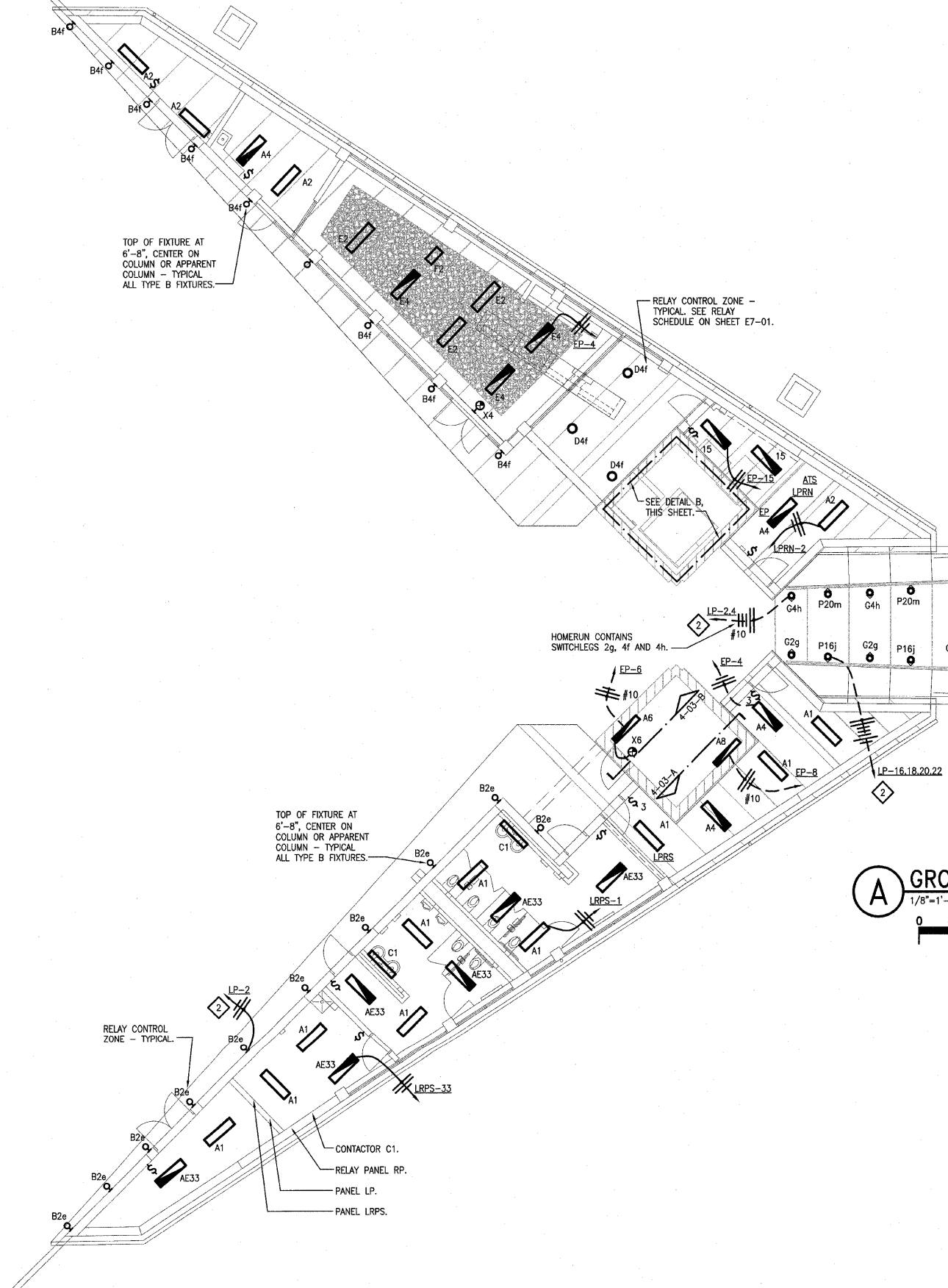
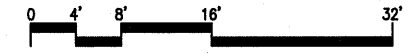
F.A. RTE.	SECTION	COUNTY	TOTAL SHEETS	SHEET NO.
	03-00026-00-PK 06-00026-01-MS	MADISON 97331	51	41

KEYED NOTES

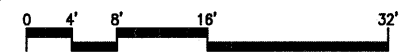
- 1 E.C. SHALL FURNISH AND INSTALL SINGLE RECEPTACLE SURFACE MOUNTED IN ELEVATOR PIT FOR SUMP PUMP CONTROL PANEL. PROVIDE SURFACE MOUNTED 4" PVC CONDUIT BETWEEN CONTROL PANEL AND PUMP. E.C. SHALL INSTALL CABLES WHICH ARE PROVIDED WITH THE PUMP BETWEEN CONTROL PANEL AND PUMP WITHIN 4".
- 2 EXTEND AND CONNECT TO PANEL VIA RELAY PANEL. SEE SHEET E4-01 FOR LOCATION OF RELAY PANEL.



B ELEVATOR PIT LIGHTING & POWER PLAN
1/8"=1'-0"



A GROUND FLOOR LIGHTING PLAN
1/8"=1'-0"



211 N. Broadway
Suite 1900
St. Louis, MO 63102
(314) 241-8188
FAX (314) 241-0125



LEWIS AND CLARK MEMORIAL TOWER
VILLAGE OF HARTFORD, ILLINOIS
HARTFORD, ILLINOIS 62049

SHEET TITLE
GROUND FLOOR LIGHTING PLAN

REV. NO.	REMARKS	DATE

KENNEDY PROJECT NO
KAI- 10-02048

ISSUE DATE
12-JULY-05

SHEET NO

E3-01