

F.A. RTE.	SECTION	COUNTY	TOTAL SHEETS	SHEET NO.
	03-00026-00-PK 06-00026-01-MS	MADISON 97331	51	43

FEDERAL AID PROJECT

211 N. Broadway
Suite 1900
St. Louis, MO 63102
(314) 241-8188
FAX (314) 241-0125

KAI

LEWIS AND CLARK MEMORIAL TOWER
VILLAGE OF HARTFORD, ILLINOIS
HARTFORD, ILLINOIS 62049

SHEET TITLE:
LANDING ELECTRICAL PLANS

REV. NO.	REMARKS	DATE

KENNEDY PROJECT NO
KAI# 10-02048

ISSUE DATE
12-JULY-05

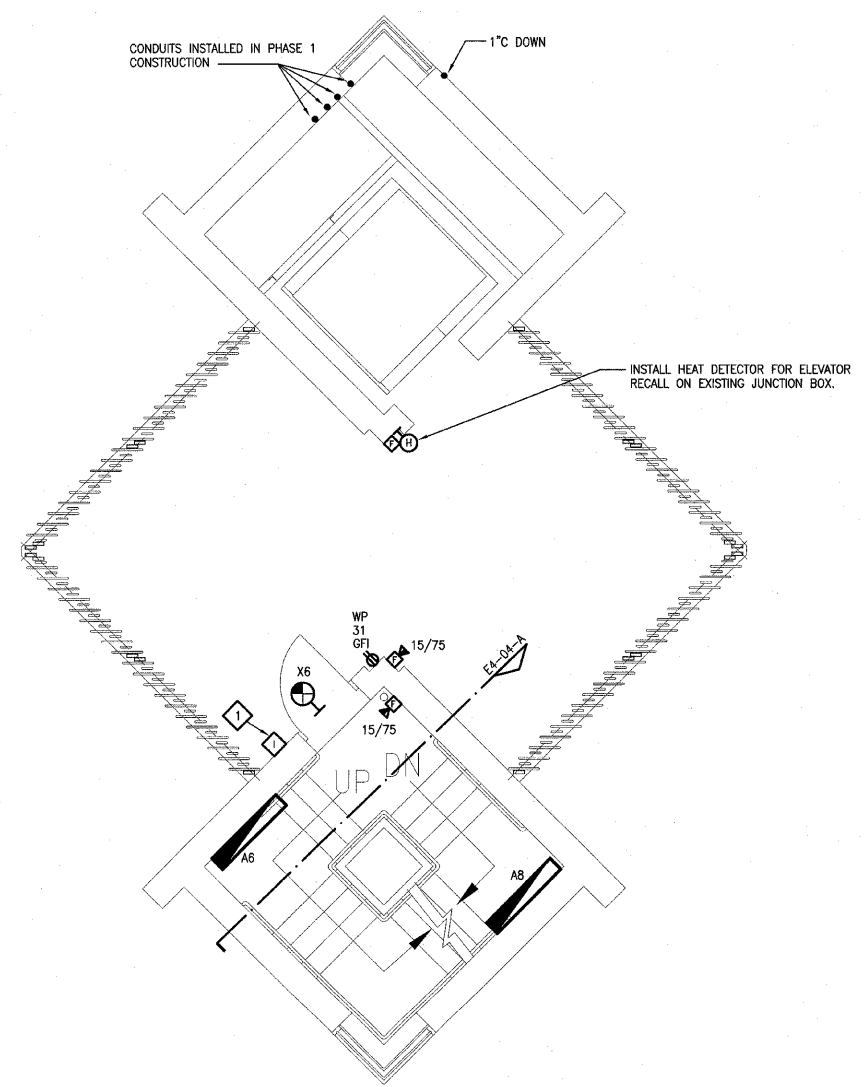
SHEET NO

E4-02

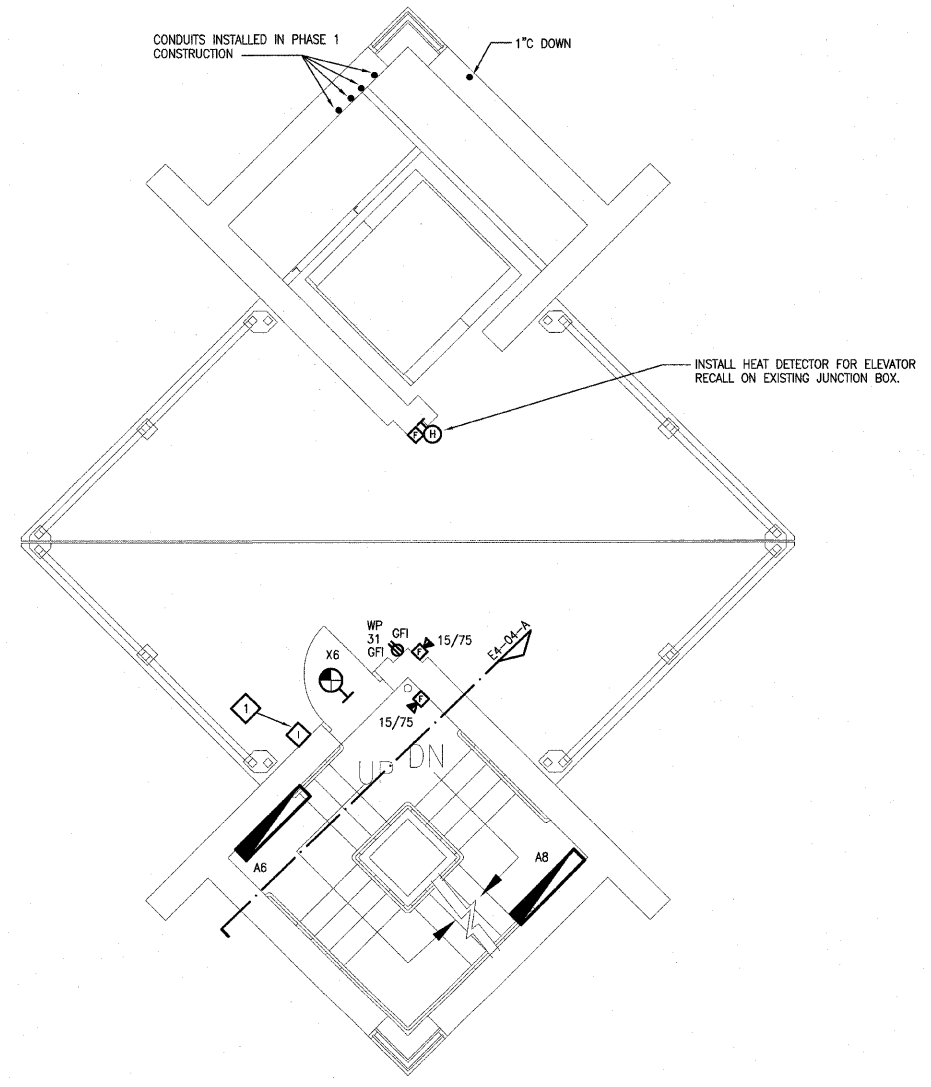
© 2005 KENNEDY ASSOCIATES INCORPORATED

KEYED NOTES

- 1 E.G. SHALL FURNISH AND INSTALL ALPHA LE-DA OUTDOOR WEATHERPROOF INTERCOM STATION WITHIN EXISTING ROUGH-IN INSTALLED DURING PHASE 1 CONSTRUCTION. PROVIDE A 4 CONDUCTOR 18 AWG STP CABLE WIRING HOMERUN FROM EACH STATION TO THE MASTER STATION IN THE GIFT SHOP. SEE SHEET E4-01 FOR LOCATION OF MASTER STATION.



A FIRST LANDING ELECTRICAL PLAN
1/4"=1'-0"



B SECOND LANDING ELECTRICAL PLAN
1/4"=1'-0"

