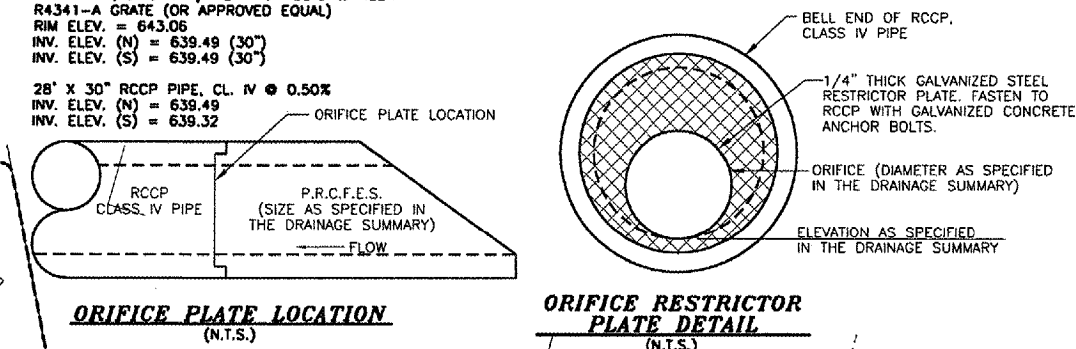
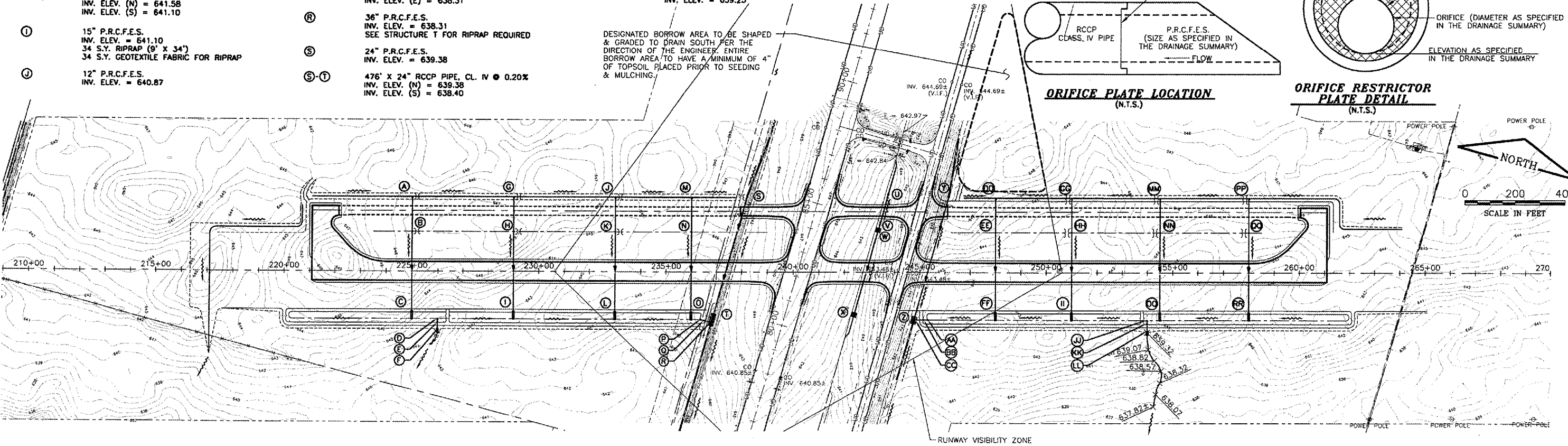


DRAINAGE SUMMARY

CONTRACT NO. = IL026

- (A) 12" P.R.C.F.E.S.
INV. ELEV. = 643.27
- (A-B) 129' X 12" RCCP PIPE, CL. IV @ 0.36%
INV. ELEV. (N) = 643.27
INV. ELEV. (S) = 642.78
- (B) INLET TY. B W/ FLAT TOP SLAB & TY. 8 GRATE
RIM ELEV. = 645.06
INV. ELEV. (N) = 642.78 (12")
INV. ELEV. (S) = 642.78 (15")
INV. ELEV. (W) = 643.06 (6")
INV. ELEV. (E) = 643.06 (6")
- (B-C) 314' X 15" RCCP PIPE, CL. IV @ 0.15%
INV. ELEV. (N) = 642.78
INV. ELEV. (S) = 642.30
- (C) 15" P.R.C.F.E.S.
INV. ELEV. = 642.30
34 S.Y. RIPRAP (9' X 34")
34 S.Y. GEOTEXTILE FABRIC FOR RIPRAP
- (D) 24" P.R.C.F.E.S.
INV. ELEV. = 641.50
7" ORIFICE RESTRICTOR PLATE
- (D-E) 8' X 24" RCCP PIPE, CL. IV @ 0.50%
INV. ELEV. (N) = 641.50
INV. ELEV. (S) = 641.43
- (E) M.H. TY. A, 5' DIA. W/ FLAT TOP SLAB & NEENAH
R4341-A GRATE (OR APPROVED EQUAL)
RIM ELEV. = 645.00
INV. ELEV. (N) = 641.43 (24")
INV. ELEV. (S) = 641.43 (24")
- (E-F) 25' X 24" RCCP PIPE, CL. IV @ 0.50%
INV. ELEV. (N) = 641.43
INV. ELEV. (S) = 641.28
- (F) 24" P.R.C.F.E.S.
INV. ELEV. = 641.28
18 S.Y. RIPRAP (9' X 18")
18 S.Y. GEOTEXTILE FABRIC FOR RIPRAP
- (G) 12" P.R.C.F.E.S.
INV. ELEV. = 642.07
- (G-H) 129' X 12" RCCP PIPE, CL. IV @ 0.36%
INV. ELEV. (N) = 642.07
INV. ELEV. (S) = 641.58
- (H) INLET TY. B W/ FLAT TOP SLAB & TY. 8 GRATE
RIM ELEV. = 643.86
INV. ELEV. (N) = 641.58 (12")
INV. ELEV. (S) = 641.58 (15")
INV. ELEV. (W) = 641.86 (6")
INV. ELEV. (E) = 641.86 (6")
- (H-I) 314' X 15" RCCP PIPE, CL. IV @ 0.15%
INV. ELEV. (N) = 641.58
INV. ELEV. (S) = 641.10
- (I) 15" P.R.C.F.E.S.
INV. ELEV. = 641.10
34 S.Y. RIPRAP (9' X 34")
34 S.Y. GEOTEXTILE FABRIC FOR RIPRAP
- (J) 12" P.R.C.F.E.S.
INV. ELEV. = 640.87
- (J-K) 129' X 12" RCCP PIPE, CL. IV @ 0.36%
INV. ELEV. (N) = 640.87
INV. ELEV. (S) = 640.38
- (K) INLET TY. B W/ FLAT TOP SLAB & TY. 8 GRATE
RIM ELEV. = 642.66
INV. ELEV. (N) = 640.38 (12")
INV. ELEV. (S) = 640.38 (15")
INV. ELEV. (W) = 640.66 (6")
INV. ELEV. (E) = 640.66 (6")
- (K-L) 314' X 15" RCCP PIPE, CL. IV @ 0.15%
INV. ELEV. (N) = 640.38
INV. ELEV. (S) = 639.90
- (L) 15" P.R.C.F.E.S.
INV. ELEV. = 639.90
34 S.Y. RIPRAP (9' X 34")
34 S.Y. GEOTEXTILE FABRIC FOR RIPRAP
- (M) 12" P.R.C.F.E.S.
INV. ELEV. = 639.97
- (M-N) 129' X 12" RCCP PIPE, CL. IV @ 0.36%
INV. ELEV. (N) = 639.97
INV. ELEV. (S) = 639.48
- (N) M.H. TY. A, 4' DIA. W/ FLAT TOP SLAB & TY. 8 GRATE
RIM ELEV. = 641.76
INV. ELEV. (N) = 639.48 (12")
INV. ELEV. (S) = 639.46 (18")
INV. ELEV. (W) = 639.76 (6")
INV. ELEV. (E) = 639.76 (6")
- (N-O) 314' X 18" RCCP PIPE, CL. IV @ 0.14%
INV. ELEV. (N) = 639.46
INV. ELEV. (S) = 639.00
- (O) 18" P.R.C.F.E.S.
INV. ELEV. = 639.00
34 S.Y. RIPRAP (9' X 34")
34 S.Y. GEOTEXTILE FABRIC FOR RIPRAP
- (P) 36" P.R.C.F.E.S.
INV. ELEV. = 638.40
12" ORIFICE RESTRICTOR PLATE
- (P-Q) 14' X 36" RCCP PIPE, CL. IV @ 0.20%
INV. ELEV. (W) = 638.40
INV. ELEV. (E) = 638.36
- (Q) M.H. TY. A, 5' DIA. W/ FLAT TOP SLAB & NEENAH
R4341-A GRATE (OR APPROVED EQUAL)
RIM ELEV. = 642.50
INV. ELEV. (W) = 638.36 (36")
INV. ELEV. (E) = 638.36 (36")
- (Q-R) 18' X 36" RCCP PIPE, CL. IV @ 0.20%
INV. ELEV. (W) = 638.36
INV. ELEV. (E) = 638.31
- (R) 36" P.R.C.F.E.S.
INV. ELEV. = 638.31
SEE STRUCTURE T FOR RIPRAP REQUIRED
- (S) 24" P.R.C.F.E.S.
INV. ELEV. = 639.38
- (S-T) 476' X 24" RCCP PIPE, CL. IV @ 0.20%
INV. ELEV. (N) = 639.38
INV. ELEV. (S) = 638.40
- (T) 24" P.R.C.F.E.S.
INV. ELEV. = 638.40
112 S.Y. RIPRAP (21' X 48")
112 S.Y. GEOTEXTILE FABRIC FOR RIPRAP
- (U) 24" EQUIVALENT ROUND ELLIPTICAL P.R.C.F.E.S.
INV. ELEV. = 642.16
- (U-V) 134' X 24" RCCP EQUIVALENT ROUND ELLIPTICAL PIPE, CL. IV @ 0.10
INV. ELEV. (N) = 642.16
INV. ELEV. (S) = 642.01
- (V) 24" EQUIVALENT ROUND ELLIPTICAL P.R.C.F.E.S.
INV. ELEV. = 642.01
40 S.Y. RIPRAP (20' X 18")
40 S.Y. GEOTEXTILE FABRIC FOR RIPRAP
- (W) 27" EQUIVALENT ROUND ELLIPTICAL P.R.C.F.E.S.
INV. ELEV. = 641.99
- (W-X) 331' X 27" RCCP EQUIVALENT ROUND ELLIPTICAL PIPE, CL. IV @ 0.10
INV. ELEV. (N) = 641.99
INV. ELEV. (S) = 641.85
- (X) 27" EQUIVALENT ROUND ELLIPTICAL P.R.C.F.E.S.
INV. ELEV. = 641.85
40 S.Y. RIPRAP (20' X 18")
40 S.Y. GEOTEXTILE FABRIC FOR RIPRAP
- (Y) 15" P.R.C.F.E.S.
INV. ELEV. = 640.35
- (Y-Z) 487' X 15" RCCP PIPE, CL. IV @ 0.70%
- (Z) 15" P.R.C.F.E.S.
INV. ELEV. = 636.85
70 S.Y. RIPRAP (21' X 30")
70 S.Y. GEOTEXTILE FABRIC FOR RIPRAP
- (AA) 36" P.R.C.F.E.S.
INV. ELEV. = 636.95
10" ORIFICE RESTRICTOR PLATE
- (AA-BB) 14' X 36" RCCP PIPE, CL. IV @ 0.28%
INV. ELEV. (E) = 636.95
INV. ELEV. (W) = 636.89
- (BB) M.H. TY. A, 5' DIA. W/ FLAT TOP SLAB & NEENAH
R4341-A GRATE (OR APPROVED EQUAL)
RIM ELEV. = 641.50
INV. ELEV. (E) = 636.89 (36")
INV. ELEV. (W) = 636.89 (36")
- (BB-CC) 28' X 36" RCCP PIPE, CL. IV @ 0.28%
INV. ELEV. (E) = 636.89
INV. ELEV. (W) = 636.80
SEE STRUCTURE Z FOR RIPRAP REQUIRED
- (DD) 12" P.R.C.F.E.S.
INV. ELEV. = 639.23
- (DD-EE) 129' X 12" RCCP PIPE, CL. IV @ 0.36%
INV. ELEV. (N) = 639.23
INV. ELEV. (S) = 638.74
- (EE) M.H. TY. A, 4' DIA. W/ FLAT TOP SLAB & TY. 8 GRATE
RIM ELEV. = 641.02
INV. ELEV. (N) = 638.74 (12")
INV. ELEV. (S) = 638.72 (18")
INV. ELEV. (W) = 639.02 (6")
INV. ELEV. (E) = 639.02 (6")
- (EE-FF) 314' X 18" RCCP PIPE, CL. IV @ 0.14%
INV. ELEV. (N) = 638.72
INV. ELEV. (S) = 638.26
- (FF) 18" P.R.C.F.E.S.
INV. ELEV. = 638.26
34 S.Y. RIPRAP (9' X 34")
34 S.Y. GEOTEXTILE FABRIC FOR RIPRAP
- (GG) 12" P.R.C.F.E.S.
INV. ELEV. = 640.13
- (GG-HH) 129' X 12" RCCP PIPE, CL. IV @ 0.36%
INV. ELEV. (N) = 640.13
INV. ELEV. (S) = 639.64
- (HH) INLET TY. B W/ FLAT TOP SLAB & TY. 8 GRATE
RIM ELEV. = 641.92
INV. ELEV. (N) = 639.64 (12")
INV. ELEV. (S) = 639.64 (15")
INV. ELEV. (W) = 639.92 (6")
INV. ELEV. (E) = 639.92 (6")
- (HH-II) 314' X 15" RCCP PIPE, CL. IV @ 0.15%
INV. ELEV. (N) = 639.64
INV. ELEV. (S) = 639.16
- (II) 15" P.R.C.F.E.S.
INV. ELEV. = 639.16
34 S.Y. RIPRAP (9' X 34")
34 S.Y. GEOTEXTILE FABRIC FOR RIPRAP
- (JJ) 30" P.R.C.F.E.S.
INV. ELEV. = 639.56
12" ORIFICE RESTRICTOR PLATE
- (JJ-KK) 8' X 30" RCCP PIPE, CL. IV @ 0.50%
INV. ELEV. (N) = 639.56
INV. ELEV. (S) = 639.49
- (KK) M.H. TY. A, 5' DIA. W/ FLAT TOP SLAB & NEENAH
R4341-A GRATE (OR APPROVED EQUAL)
RIM ELEV. = 643.06
INV. ELEV. (N) = 639.49 (30")
INV. ELEV. (S) = 639.49 (30")
- (KK-LL) 28' X 30" RCCP PIPE, CL. IV @ 0.50%
INV. ELEV. (N) = 639.49
INV. ELEV. (S) = 639.32
- (LL) 30" P.R.C.F.E.S.
INV. ELEV. = 639.32
18 S.Y. RIPRAP (9' X 18")
18 S.Y. GEOTEXTILE FABRIC FOR RIPRAP
- (MM) 12" P.R.C.F.E.S.
INV. ELEV. = 641.18
- (MM-NN) 129' X 12" RCCP PIPE, CL. IV @ 0.36%
INV. ELEV. (N) = 641.18
INV. ELEV. (S) = 640.69
- (NN) INLET TY. B W/ FLAT TOP SLAB & TY. 8 GRATE
RIM ELEV. = 642.97
INV. ELEV. (N) = 640.69 (12")
INV. ELEV. (S) = 640.69 (15")
INV. ELEV. (W) = 640.97 (6")
INV. ELEV. (E) = 640.97 (6")
- (NN-OO) 314' X 15" RCCP PIPE, CL. IV @ 0.15%
INV. ELEV. (N) = 640.69
INV. ELEV. (S) = 640.21
- (OO) 15" P.R.C.F.E.S.
INV. ELEV. = 640.21
34 S.Y. RIPRAP (9' X 34")
34 S.Y. GEOTEXTILE FABRIC FOR RIPRAP
- (PP) 12" P.R.C.F.E.S.
INV. ELEV. = 642.23
- (PP-OO) 129' X 12" RCCP PIPE, CL. IV @ 0.36%
INV. ELEV. (N) = 642.23
INV. ELEV. (S) = 641.74
- (QQ) INLET TY. B W/ FLAT TOP SLAB & TY. 8 GRATE
RIM ELEV. = 644.02
INV. ELEV. (N) = 641.74 (12")
INV. ELEV. (S) = 641.74 (15")
INV. ELEV. (W) = 642.02 (6")
INV. ELEV. (E) = 642.02 (6")
- (QQ-RR) 314' X 15" RCCP PIPE, CL. IV @ 0.15%
INV. ELEV. (N) = 641.74
INV. ELEV. (S) = 641.26
- (RR) 15" P.R.C.F.E.S.
INV. ELEV. = 641.26
34 S.Y. RIPRAP (9' X 34")
34 S.Y. GEOTEXTILE FABRIC FOR RIPRAP



DESIGNATED BORROW AREA TO BE SHAPED & GRADED TO DRAIN SOUTH PER THE DIRECTION OF THE ENGINEER. ENTIRE BORROW AREA TO HAVE A MINIMUM OF 4" OF TOPSOIL PLACED PRIOR TO SEEDING & MULCHING.