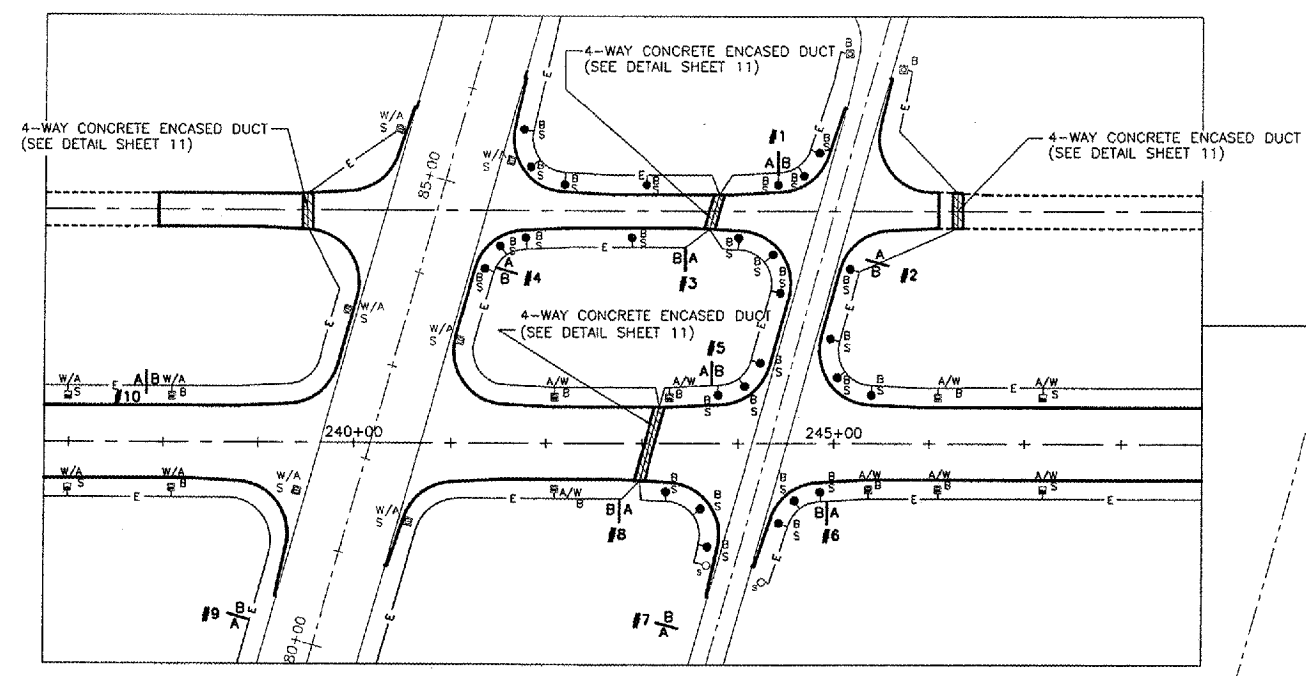
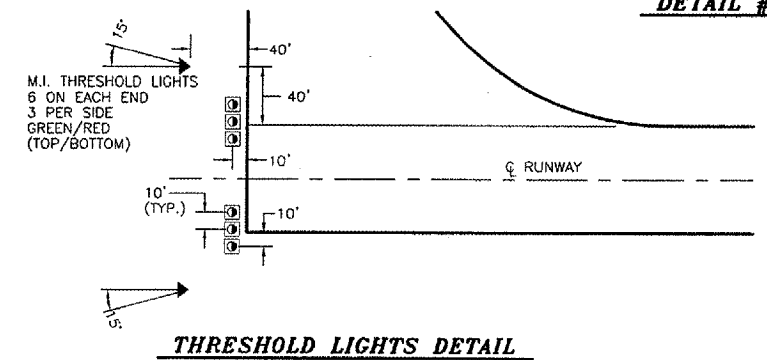
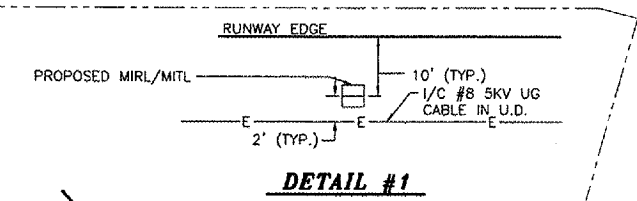
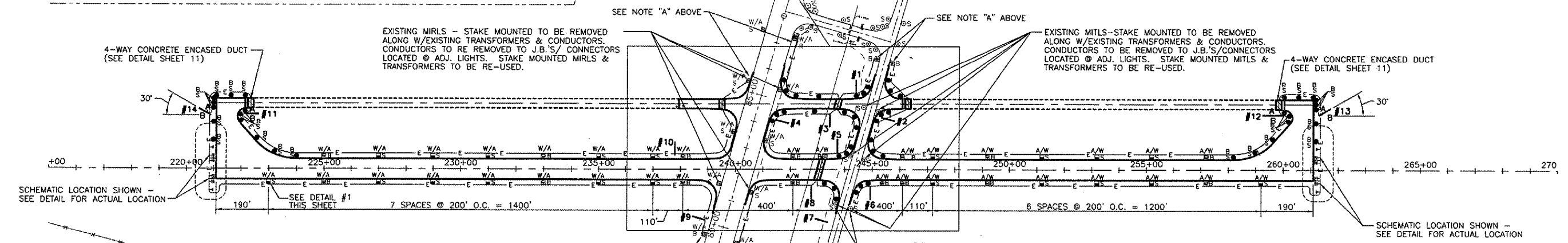


NOTE "A":
ALL CONNECTIONS TO EXISTING HOMERUN CIRCUITS SHALL BE TYPE A AS NOTED IN FAA CIRCULAR A150/5340-30A, FIG. 120
ALL CONNECTIONS TO EXISTING HOMERUN @ JUNCTION W/ LOOP CIRCUITS SHALL BE TYPE B AS NOTED IN AC150/5340-30A, FIG. 121



LEGEND

—E—	PROPOSED HIGH VOLTAGE CABLE	W=	WHITE
▨	PROPOSED 4-WAY CONCRETE ENCASED DUCT	A=	AMBER
SO	EXISTING MEDIUM INTENSITY TAXIWAY LIGHT (STAKE MOUNTED)	B=	BLUE
SB	EXISTING MEDIUM INTENSITY TAXIWAY LIGHT (BASE MOUNTED)	□	PROPOSED THRESHOLD LIGHTS
SR	PROPOSED MEDIUM INTENSITY RUNWAY LIGHT (BASE MOUNTED)		
SS	PROPOSED MEDIUM INTENSITY TAXIWAY LIGHT (STAKE MOUNTED)		
SW	PROPOSED MEDIUM INTENSITY RUNWAY LIGHT (STAKE MOUNTED)		
SB	EXISTING MEDIUM INTENSITY RUNWAY LIGHT (STAKE MOUNTED)		
SB	EXISTING MEDIUM INTENSITY RUNWAY LIGHT (BASE MOUNTED)		
—T—	PROPOSED TAXIWAY GUIDANCE SIGN		
▲	PROPOSED REILS		



LEGEND PANELS FOR TAXIWAY GUIDANCE/ RUNWAY EXIT SIGNS

NEW SIGN #1 (1 MODULE) STA. 244+40.0, 277.5' LT.	NEW SIGN #6 (1 MODULE) STA. 244+93.0, 57.5' RT.	NEW SIGN #11 (2 MODULE) STA. 222+14.0, 200.0' LT.
NEW SIGN #2 (3 MODULE) STA. 245+33.0, 190.0' LT.	NEW SIGN #7 (3 MODULE) STA. 243+39.5, 192.0' RT.	NEW SIGN #12 (2 MODULE) STA. 260+04.0, 500.0' LT.
NEW SIGN #3 (3 MODULE) STA. 243+44.5, 202.5' LT.	NEW SIGN #8 (2 MODULE) STA. 242+77.0, 57.5' RT.	NEW SIGN #13 (2 MODULE) STA. 261+29.0, 200.0' LT.
NEW SIGN #4 (2 MODULE) STA. 241+45.5, 180.0' LT.	NEW SIGN #9 (2 MODULE) STA. 238+92.0, 184.0' RT.	NEW SIGN #14 (2 MODULE) STA. 220+89.0, 195.5' LT.
NEW SIGN #5 (1 MODULE) STA. 243+72.5, 57.5' LT.	NEW SIGN #10 (2 MODULE) STA. 237+57.0, 57.5' LT.	

NOTES: 1. SEE RUNWAY EXIT SIGN & TAXIWAY GUIDANCE SIGN DETAIL ON SHEET 11.
2. OFFSETS TO NEAREST EDGE OF SIGN.
3. ALL SIGNS TO BE 20' OFF EDGE OF PAVEMENT TO NEAREST EDGE OF SIGN.