

STATE OF ILLINOIS
DEPARTMENT OF TRANSPORTATION

**PROPOSED
HIGHWAY PLANS**

**REND LAKE STATE FISH
AND WILDLIFE AREA
SECTION REND LAKE O&C**

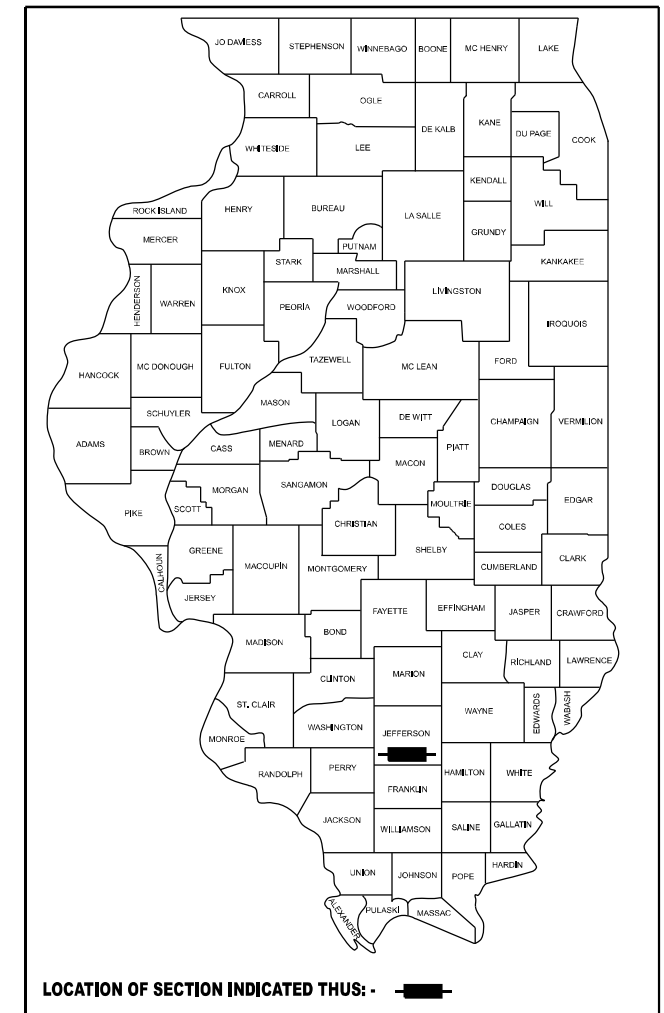
**OIL AND CHIP
JEFFERSON COUNTY**

C-30-009-25

F.A. RTE.	SECTION	COUNTY	TOTAL SHEETS	SHEET NO.
	PARK ROADS	JEFFERSON	27	1
		ILLINOIS	CONTRACT NO. 46942	

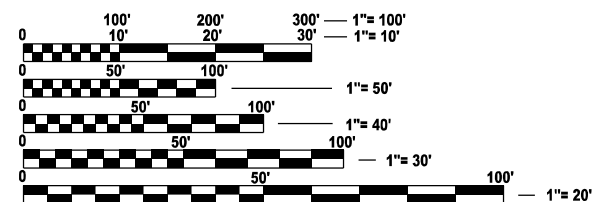
INDEX OF SHEETS

- 1 COVER SHEET
- 2 HIGHWAY STANDARDS & GENERAL NOTES
- 3-5 SUMMARY OF QUANTITIES
- 6-7 TYPICAL SECTIONS
- 8 SCHEDULE OF QUANTITIES
- 9-18 PLAN SHEETS
- 19-27 MISCELLANEOUS DETAILS



IDNR FILE # 5-24-007

PROJECT LOCATION



FULL SIZE PLANS HAVE BEEN PREPARED USING STANDARD ENGINEERING SCALES. REDUCED SIZED PLANS WILL NOT CONFORM TO STANDARD SCALES. IN MAKING MEASUREMENTS ON REDUCED PLANS, THE ABOVE SCALES MAY BE USED.

J.U.L.I.E.
JOINT UTILITY LOCATION INFORMATION FOR EXCAVATION
1-800-892-0123
OR 811

PROJECT ENGINEER VINCE MADONIA (217) 782-4074

CONTRACT NO. 46942



Michael J. Rosberg
01/09/2025
Expires 11/30/2025

STATE OF ILLINOIS
DEPARTMENT OF TRANSPORTATION

SUBMITTED JAN 31, 2025

[Signature]
REGIONAL ENGINEER

January 31, 2025
[Signature]
ENGINEER OF DESIGN AND ENVIRONMENT

January 31, 2025
[Signature]
DIRECTOR OF HIGHWAYS PROJECT IMPLEMENTATION

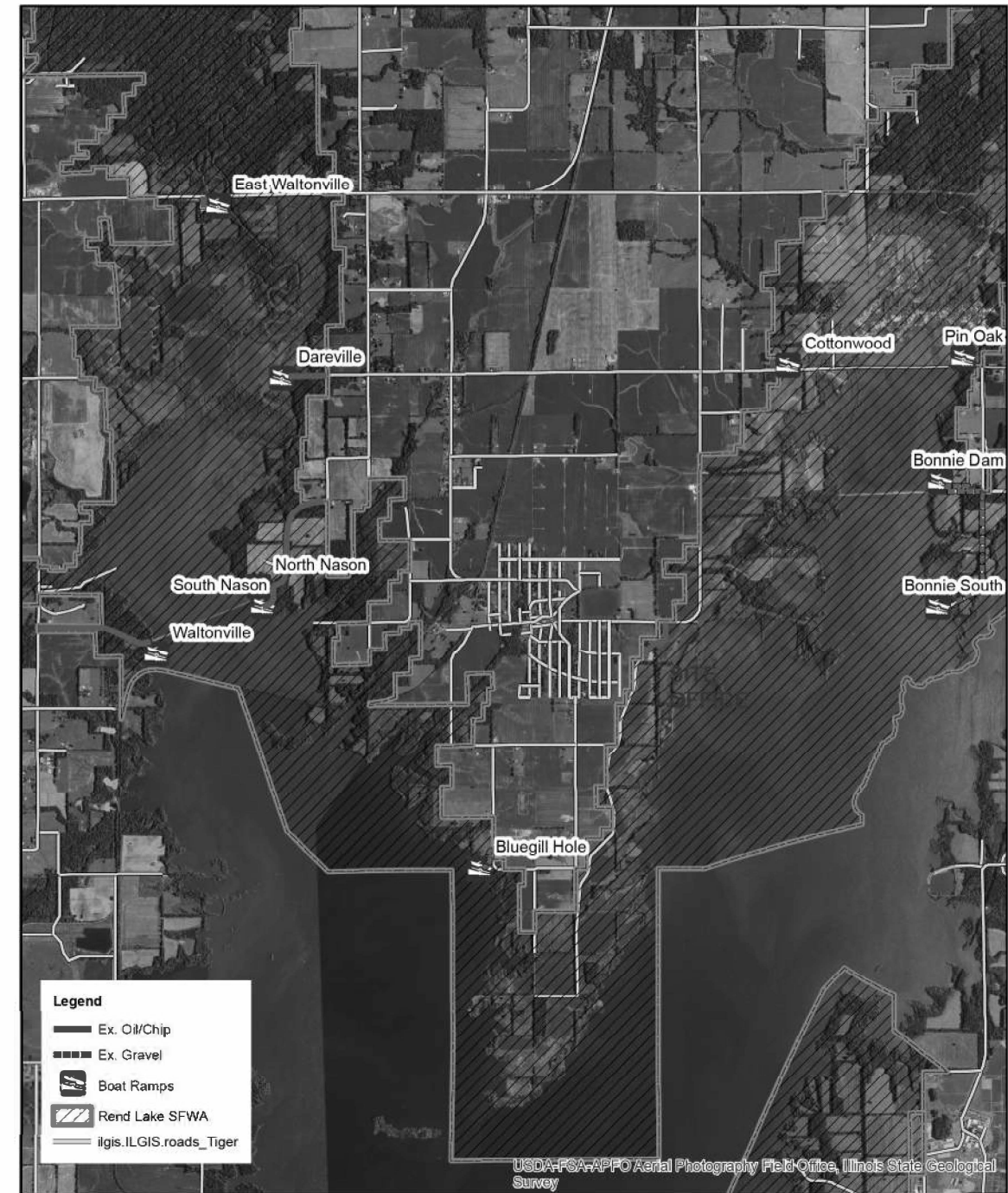
**PRINTED BY THE AUTHORITY
OF THE STATE OF ILLINOIS**

HIGHWAY STANDARDS

000001-08	001006
442201-03	420001-10
701201-05	542401-04
701306-04	720001-01
701501-06	720006-04
701901-10	
728001-01	
731001-01	
BLR18-6	
BLR17-4	
BLR21-9	
BLR22-7	

GENERAL NOTES

1. ANY REFERENCE TO A STANDARD IN THESE PLANS SHALL BE INTERPRETED TO MEAN THE EDITION AS INDICATED BY THE SUB NUMBER LISTED IN THE INDEX OF SHEETS OR THE COPY OF THE STANDARD INCLUDED IN THESE PLANS.
2. IN ADDITION TO FIELD SURVEYS, PLAN DIMENSIONS AND DETAILS RELATIVE TO THE EXISTING FACILITIES HAVE BEEN TAKEN FROM EXISTING PLANS AND ARE SUBJECT TO CONSTRUCTION VARIATIONS. IT SHALL BE THE CONTRACTOR'S RESPONSIBILITY TO VERIFY SUCH DIMENSIONS AND DETAILS IN THE FIELD. SUCH VARIATIONS SHALL NOT BE A CAUSE FOR ADDITIONAL COMPENSATION DUE TO A CHANGE IN THE SCOPE OF WORK; HOWEVER, THE CONTRACTOR WILL BE PAID FOR THE QUANTITY ACTUALLY FURNISHED AT THE UNIT PRICE BID FOR THE WORK.
3. THE CONTRACTOR SHALL BE RESPONSIBLE FOR PROTECTING UTILITY PROPERTY FROM CONSTRUCTION OPERATIONS, AS OUTLINED IN ARTICLE 107.31 OF THE STANDARD SPECIFICATIONS. THE J.U.L.L.E NUMBER IS 1-800-892-0123. A MINIMUM OF 48 HOURS ADVANCE NOTICE IS REQUIRED. UTILITIES KNOWN TO HAVE FACILITIES WITHIN THE PROJECT AREA:
 AMEREN ILLINOIS (ELECTRIC)
 AMEREN ILLINOIS (GAS)
 CLEARWAVE COMMUNICATIONS (BROADBAND)
 REND LAKE CONSERVANCY DISTRICT INTER-CITY WATER (WATER)
 REND LAKE CONSERVANCY DISTRICT (SEWER)
 SOUTHEASTERN ILLINOIS ELECTRIC COOPERATIVE (ELECTRIC)
 SPECTRUM (BROADBAND)
4. COVER AND SEAL COAT AGGREGATE SHALL BE CRUSHED LIMESTONE.
5. THE RESIDENT ENGINEER IS RESPONSIBLE FOR MARKING ALL SIGN LOCATIONS.
6. NO TREES SHALL BE CUT FROM APRIL 1 TO SEPTEMBER 30.
7. ANY DISTURBED AREAS SHALL BE PERMANENTLY SEEDED.



Rend Lake State Fish and Wildlife Area
Jefferson Co., Illinois
Proposed Park Road Project

Date: 2/14/2024

AREA LOCATION MAP

REV - MS

MODEL: Default
 FILE NAME: P:\2024\ME24010_PTB 210-034_VV PH II BDE IDNR_FGWork Order 2_Rend Lake Phase II Plans\01-CADD\02-Shs\0946942-shf-title.dgn



USER NAME = marnidon	DESIGNED - MJR	REVISED -
DRAWN - MLA	REVISED -	
PLOT SCALE = 2,000' / in.	CHECKED - ERO	REVISED -
PLOT DATE = 1/9/2025	DATE = 1/9/2025	REVISED -

STATE OF ILLINOIS
DEPARTMENT OF TRANSPORTATION

GENERAL NOTES & HIGHWAY STANDARDS

SCALE: N/A SHEET 1 OF 1 SHEETS STA. TO STA.

F.A. RTE.	SECTION	COUNTY	TOTAL SHEETS	SHEET NO.
	PARK ROADS	JEFFERSON	27	2
CONTRACT NO. 46942				
ILLINOIS FED. AID PROJECT				

MODEL: Default
 FILE NAME: P:\2024\ME24010_PTB 210-034_VV PH I_IL BDE_IDNR_FGIWork Order 2_Rend Lake Phase II Plans\01-CADD\02-Shis\0946942-shi-title.dgn

CODE NO.	ITEM	UNIT	TOTAL QUANTITY	CONSTR. CODE
				PARK ROADS
				100% STATE
				ROADWAY
				0005
				RURAL
28100105	STONE RIPRAP, CLASS A3	SQ YD	60	60
35800100	PREPARATION OF BASE	SQ YD	82227	82227
35800200	AGGREGATE BASE REPAIR	TON	4239	4239
40200100	AGGREGATE SURFACE COURSE, TYPE A	TON	2448	2448
42000100	PORTLAND CEMENT CONCRETE PAVEMENT 6"	SQ YD	36	36
44000100	PAVEMENT REMOVAL	SQ YD	74	74
44000300	CURB REMOVAL	FOOT	25	25
44213200	SAW CUTS	FOOT	110	110
50105220	PIPE CULVERT REMOVAL	FOOT	100	100
542C0220	PIPE CULVERTS, CLASS C, TYPE 1 15"	FOOT	32	32
542C0229	PIPE CULVERTS, CLASS C, TYPE 1 24"	FOOT	30	30
542C0241	PIPE CULVERTS, CLASS C, TYPE 1 36"	FOOT	38	38
54262715	METAL FLARED END SECTIONS 15"	EACH	2	2
54262724	METAL FLARED END SECTIONS 24"	EACH	2	2

REV - MS



USER NAME = mamidon	DESIGNED - MJR	REVISED -
	DRAWN - MLA	REVISED -
PLOT SCALE = 2.000' / 1in.	CHECKED - ERO	REVISED -
PLOT DATE = 1/9/2025	DATE - 1/9/2025	REVISED -

STATE OF ILLINOIS
 DEPARTMENT OF TRANSPORTATION

SUMMARY OF QUANTITIES

SCALE: SHEET 1 OF 3 SHEETS STA. TO STA.

F.A. RTE.	SECTION	COUNTY	TOTAL SHEETS	SHEET NO.
	PARK ROADS	JEFFERSON	27	3
			CONTRACT NO. 46942	
ILLINOIS FED. AID PROJECT				

MODEL: Default
 FILE NAME: P:\2024\ME24010_PTB 210-034_VV PH I_IL BDE_IDNR_FGIWork Order 2_Rend Lake Phase II Plans\01-CADD\02-Sites\0946942-sht-tille.dgn

CODE NO.	ITEM	UNIT	TOTAL QUANTITY	CONSTR. CODE	
				PARK ROADS 100% STATE	
				ROADWAY	
				0005	RURAL
54262736	METAL FLARED END SECTIONS 36"	EACH	2	2	
67100100	MOBILIZATION	L SUM	1	1	
* 72000100	SIGN PANEL - TYPE 1	SQ FT	8	8	
* 72800100	TELESCOPING STEEL SIGN SUPPORT	FOOT	18	18	
* 73100100	BASE FOR TELESCOPING STEEL SIGN SUPPORT	EACH	2	2	
* 78001100	PAINT PAVEMENT MARKING - LETTERS AND SYMBOLS	SQ FT	56	56	
* 78001110	PAINT PAVEMENT MARKING - LINE 4"	FOOT	2299	2299	
* 78001130	PAINT PAVEMENT MARKING - LINE 6"	FOOT	40	40	
* 78001180	PAINT PAVEMENT MARKING - LINE 24"	FOOT	20	20	
X0320095	WOOD BOLLARD	EACH	5	5	
X0324056	REMOVAL OF EXISTING WOOD BOLLARDS	EACH	46	46	
* X0326406	INFORMATION KIOSK COMPLETE	EACH	1	1	
* X0327592	LARGE ENTRANCE SIGN	EACH	1	1	
X0328027	SECURITY GATE	EACH	1	1	

* SPECIALTY ITEM



USER NAME = mamidon	DESIGNED - MJR	REVISED -
	DRAWN - MLA	REVISED -
PLOT SCALE = 2.000' / 1in.	CHECKED - ERO	REVISED -
PLOT DATE = 1/9/2025	DATE - 1/9/2025	REVISED -

STATE OF ILLINOIS
 DEPARTMENT OF TRANSPORTATION

SUMMARY OF QUANTITIES

SCALE: SHEET 2 OF 3 SHEETS STA. TO STA.

F.A. RTE.	SECTION	COUNTY	TOTAL SHEETS	SHEET NO.
	PARK ROADS	JEFFERSON	27	4
			CONTRACT NO. 46942	
ILLINOIS FED. AID PROJECT				

MODEL: Default
 FILE NAME: P:\2024\ME24010_PTB 210-034_VV PH I, BDE_IDNR_FGIWork_Order_2_Rend Lake Phase II Plans\01-CADD\02-Plans\0942-Shts\0942-sht-title.dgn

CONSTR. CODE
PARK ROADS 100% STATE
ROADWAY
0005
RURAL

CODE NO.	ITEM	UNIT	TOTAL QUANTITY	
X1500006	BITUMINOUS SURFACE TREATMENT, A3	SQ YD	63251	63251
X2020114	GRADING AND SHAPING DITCHES (SPECIAL)	FOOT	4133	4133
X4060107	BITUMINOUS MATERIALS (FOG SEAL)	POUND	56926	56926
X4401198	HOT-MIX ASPHALT SURFACE REMOVAL, VARIABLE DEPTH	SQ YD	6675	6675
X7010216	TRAFFIC CONTROL AND PROTECTION, (SPECIAL)	L SUM	1	1
* X7200066	SMALL ENTRANCE SIGN	EACH	8	8

* SPECIALTY ITEM

REV - MS



USER NAME = mamidon	DESIGNED - MJR	REVISED -
	DRAWN - MLA	REVISED -
PLOT SCALE = 2.000' / in.	CHECKED - ERO	REVISED -
PLOT DATE = 1/9/2025	DATE - 1/9/2025	REVISED -

STATE OF ILLINOIS
 DEPARTMENT OF TRANSPORTATION

SUMMARY OF QUANTITIES

SCALE: SHEET 3 OF 3 SHEETS STA. TO STA.

F.A. RTE.	SECTION	COUNTY	TOTAL SHEETS	SHEET NO.
	PARK ROADS	JEFFERSON	27	5
CONTRACT NO. 46942				
ILLINOIS FED. AID PROJECT				

RESURFACING SCHEDULE

SITES	PREPARATION OF BASE	AGGREGATE BASE REPAIR	AGGREGATE SURFACE COURSE, TYPE A	PORTLAND CEMENT CONCRETE PAVEMENT 6"	PAVEMENT REMOVAL	CURB REMOVAL	SAWCUTS	BITUMINOUS SURFACE TREATMENT, A3	GRADING AND SHAPING DITCHES (SPECIAL)	BITUMINOUS MATERIALS (FOG SEAL)	HOT-MIX ASPHALT SURFACE REMOVAL, VARIABLE DEPTH
	SQ YD	TON	TON	SQ YD	SQ YD	FOOT	FOOR	SQ YD	FOOT	POUND	SQ YD
BONNIE DAM	11592	1178	574					9062		8156	
BONNIE SOUTH											
COTTONWOOD	9781	1114	1114								
SITE HEADQUARTERS	7743	549		36	36		28	7743	2674	6969	
WATERFOWL VIEWING AREA	1585	181	181								
BLUEGILL HOLE	3308	377	377						1459		
DAREVILLE	9274							9274		8346	
NASON	16360				38	25	82	16360		14724	
WALTONVILLE DAM	15211							15211		13690	6675
EAST WALTONVILLE	5601	638						5601		5041	
PIN OAK FLATS	1772	202	202								
TOTAL	82227	4239	2448	36	74	25	110	63251	4133	56926	6675

DRAINAGE SCHEDULE

SITES	STONE RIPRAP, CLASS A3	PIPE CULVERT REMOVAL	PIPE CULVERTS, CLASS C, TYPE 1 15"	PIPE CULVERTS, CLASS C, TYPE 1 24"	PIPE CULVERTS, CLASS C, TYPE 1 36"	METAL FLARED END SECTIONS 15"	METAL FLARED END SECTIONS 24"	METAL FLARED END SECTIONS 36"
DAREVILLE	40	62	32	30		2	2	
NASON	20	38			38			2
TOTAL	60	100	32	30	38	2	2	2

PAVEMENT MARKING AND SIGNING SCHEDULE

SITES	SIGN PANEL - TYPE 1	TELESCOPING STEEL SIGN SUPPORT	BASE FOR TELESCOPING STEEL SIGN SUPPORT	PAINT PAVEMENT MARKING - LETTERS AND SYMBOLS	PAINT PAVEMENT MARKING - LINE 4"	PAINT PAVEMENT MARKING - LINE 6"	PAINT PAVEMENT MARKING - LINE 24"	WOOD BOLLARD	REMOVAL OF EXISTING WOOD BOLLARDS	INFORMATION KIOSK COMPLETE	LARGE ENTRANCE SIGN	SECURITY GATE	SMALL ENTRANCE SIGN
	SQ FT	FOOT	EACH	SQ FT	FOOT	FOOT	FOOT	EACH	EACH	EACH	EACH	EACH	EACH
BONNIE DAM													
BONNIE SOUTH	4	18	2	16	894								1
COTTONWOOD													1
SITE HEADQUARTERS	2			8	150				41		1		
WATERFOWL VIEWING AREA	2			8	223								1
BLUEGILL HOLE								5	5			1	
DAREVILLE													1
NASON				8	150	40	20			1			
WALTONVILLE DAM				16	882								1
EAST WALTONVILLE													2
PIN OAK FLATS													1
TOTAL	8	18	2	56	2299	40	20	5	46	1	1	1	8

MODEL: Default
 FILE NAME: P:\2024\ME24010_PTB 2\1-0-034_VV PH II BDE IDNR FGWork Order 2_Rend Lake Phase II Plans\01-CADD\02-Shis\0946942-shi-title.dgn



USER NAME = mamidon
 DESIGNED - MJR
 DRAWN - MLA
 CHECKED - ERO
 DATE - 1/9/2025
 PLOT SCALE = 2,000' / in.
 PLOT DATE = 1/9/2025

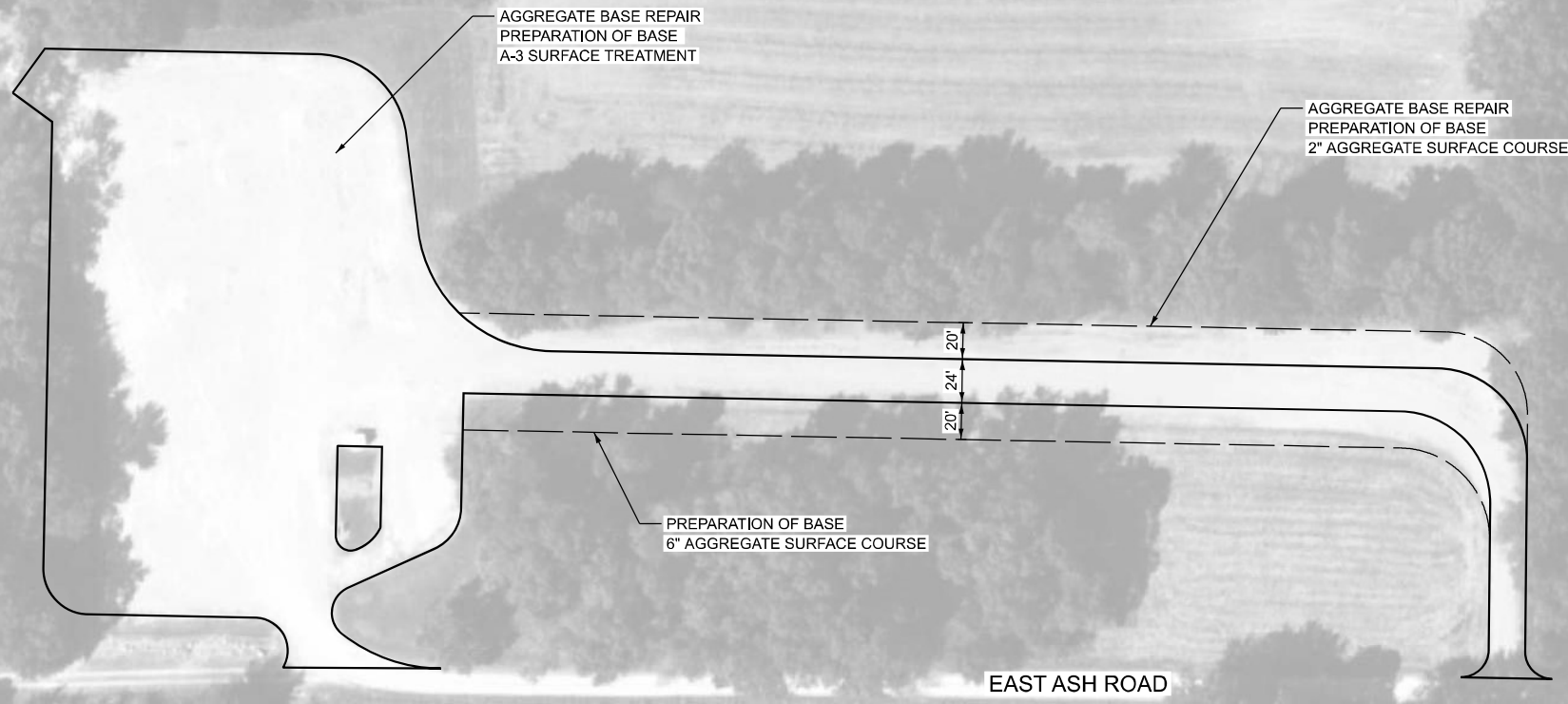
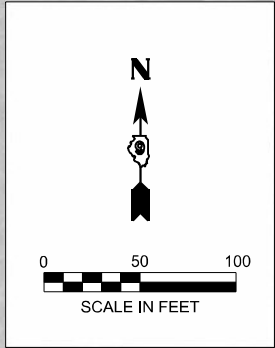
REVISED -
 REVISED -
 REVISED -
 REVISED -

**STATE OF ILLINOIS
 DEPARTMENT OF TRANSPORTATION**

SCHEDULE OF QUANTITIES

SCALE: SHEET 1 OF 1 SHEETS STA. TO STA.

F.A. RTE.	SECTION	COUNTY	TOTAL SHEETS	SHEET NO.
	PARK ROADS	JEFFERSON	27	8
CONTRACT NO. 46942				
ILLINOIS FED. AID PROJECT				



NORTH COOLEY LANE

EAST ASH ROAD

LEGEND

- - - - -	AGGREGATE SURFACE COURSE
—————	A-3 SURFACE TREATMENT

MODEL: Default; FILE NAME: P:\2024\1ME24010_PTB 210-034_VV PH II BDE IDNR_FGWork_Order 2_Rend Lake Phase II Plans\01-CADD\02-Shis\0916942-shi-title.dgn



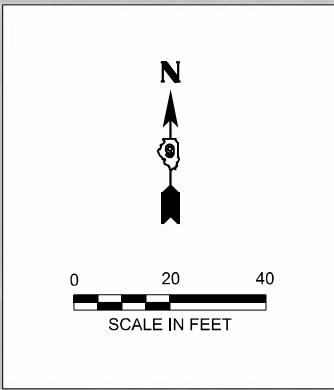
USER NAME = mamidon	DESIGNED - MJR	REVISED -
PLOT SCALE = 100,000' / in.	DRAWN - MLA	REVISED -
PLOT DATE = 1/9/2025	CHECKED - ERO	REVISED -
	DATE - 1/9/2025	REVISED -

**STATE OF ILLINOIS
DEPARTMENT OF TRANSPORTATION**

**BONNIE DAM ACCESS AREA
SITE IMPROVEMENTS**

SCALE: 1" = 50' SHEET 1 OF 10 SHEETS STA. TO STA.

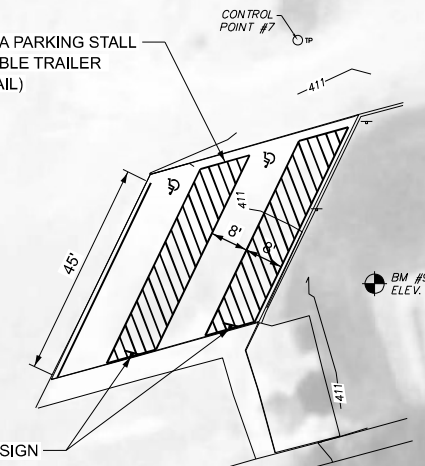
F.A. RTE.	SECTION	COUNTY	TOTAL SHEETS	SHEET NO.
	PARK ROADS	JEFFERSON	27	9
CONTRACT NO. 46942				
ILLINOIS FED. AID PROJECT				



NORTH COOLEY LANE

NEW SMALL ENTRANCE SIGN (S1)

RE-STRIPE ADA PARKING STALL
(SEE ACCESSIBLE TRAILER
PARKING DETAIL)



BM #9
ELEV. 413.38

CONTROL POINT #8

LEGEND	
	AGGREGATE SURFACE COURSE
	A-3 SURFACE TREATMENT

MODEL: Default
FILE NAME: P:\2024\1ME24010_PTB 210-034_VV PH II BDE IDNR_FGWork_Order 2_Rend Lake Phase II Plans\01-CADD\02-Shis\0916942-sh1-title.dgn



USER NAME = mamidon	DESIGNED - MJR	REVISED -
	DRAWN - MLA	REVISED -
PLOT SCALE = 40,000' / in.	CHECKED - ERO	REVISED -
PLOT DATE = 1/9/2025	DATE - 1/9/2025	REVISED -

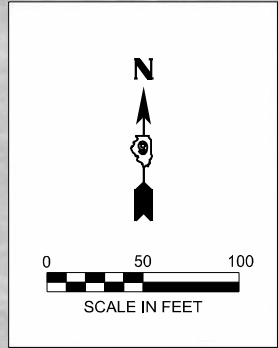
**STATE OF ILLINOIS
DEPARTMENT OF TRANSPORTATION**

**BONNIE SOUTH ACCESS AREA
SITE IMPROVEMNTS**

SCALE: 1" = 20' SHEET 2 OF 10 SHEETS STA. TO STA.

F.A. RTE.	SECTION	COUNTY	TOTAL SHEETS	SHEET NO.
	PARK ROADS	JEFFERSON	27	10
CONTRACT NO. 46942				

ILLINOIS FED. AID PROJECT



AGGREGATE BASE REPAIR
PREPARATION OF BASE
2" AGGREGATE SURFACE COURSE

EAST BONNIE ROAD

REMOVE & REPLACE
SMALL ENTRANCE SIGN (S2)

LEGEND

- - - - -	AGGREGATE SURFACE COURSE
—————	A-3 SURFACE TREATMENT

MODEL: Default
FILE NAME: P:\2024\11\21\21-034_VV PH II BDE IDNR FGWork Order 2 Rend Lake Phase II Plans\01-CADD\02-Shis\0916942-shi-title.dgn



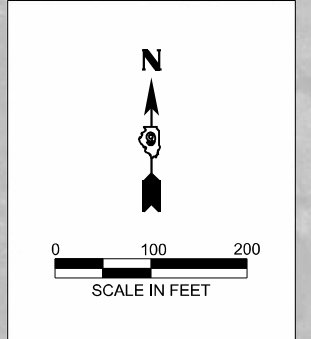
USER NAME = mamidon	DESIGNED - MJR	REVISED -
	DRAWN - MLA	REVISED -
PLOT SCALE = 100,000' / in.	CHECKED - ERO	REVISED -
PLOT DATE = 1/9/2025	DATE - 1/9/2025	REVISED -

**STATE OF ILLINOIS
DEPARTMENT OF TRANSPORTATION**

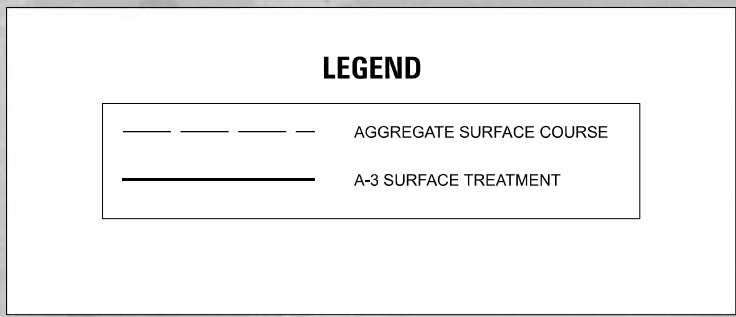
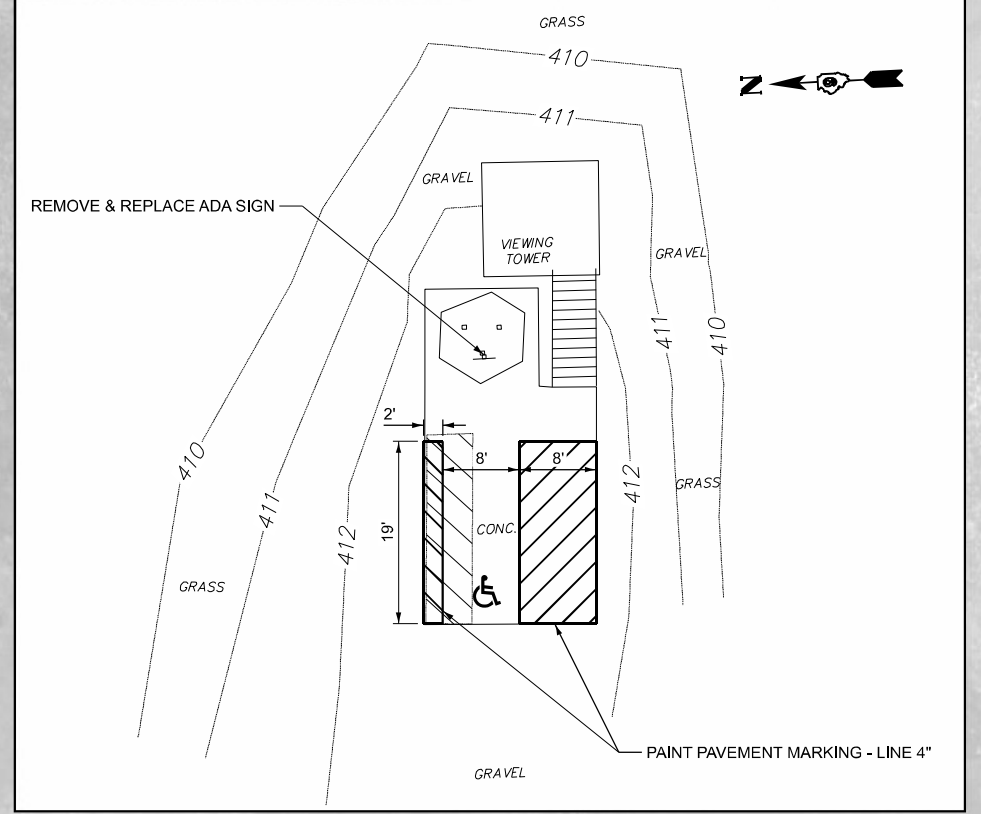
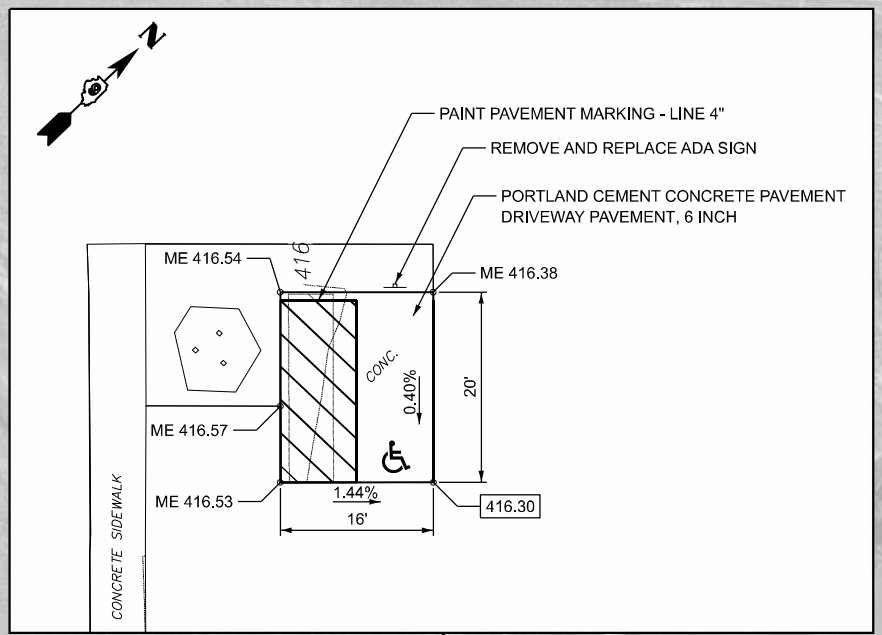
**COTTONWOOD ACCESS AREA
SITE IMPROVEMENTS**

SCALE: 1" = 50' SHEET 3 OF 10 SHEETS STA. TO STA.

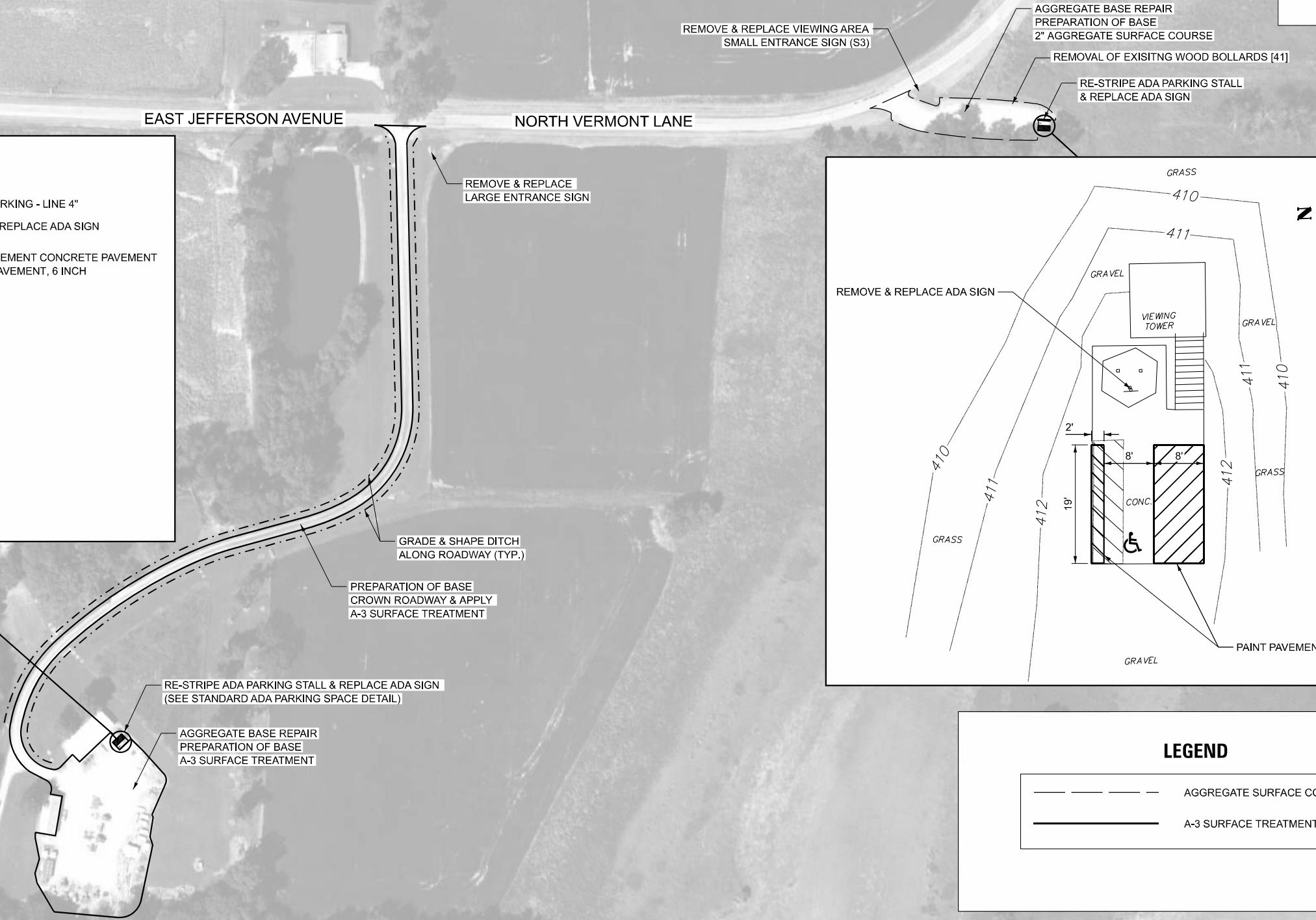
F.A. RTE.	SECTION	COUNTY	TOTAL SHEETS	SHEET NO.
	PARK ROADS	JEFFERSON	27	11
CONTRACT NO. 46942				
ILLINOIS FED. AID PROJECT				



MODEL: Default
 FILE NAME: P:\2024\1ME24010_PTB 21\0-034_VV PH II BDE IDNR_FGWork_Order 2_Rend Lake Phase II Plans\01-CADD\02-Shts\0946942-sht-title.dgn



EAST JEFFERSON AVENUE NORTH VERMONT LANE



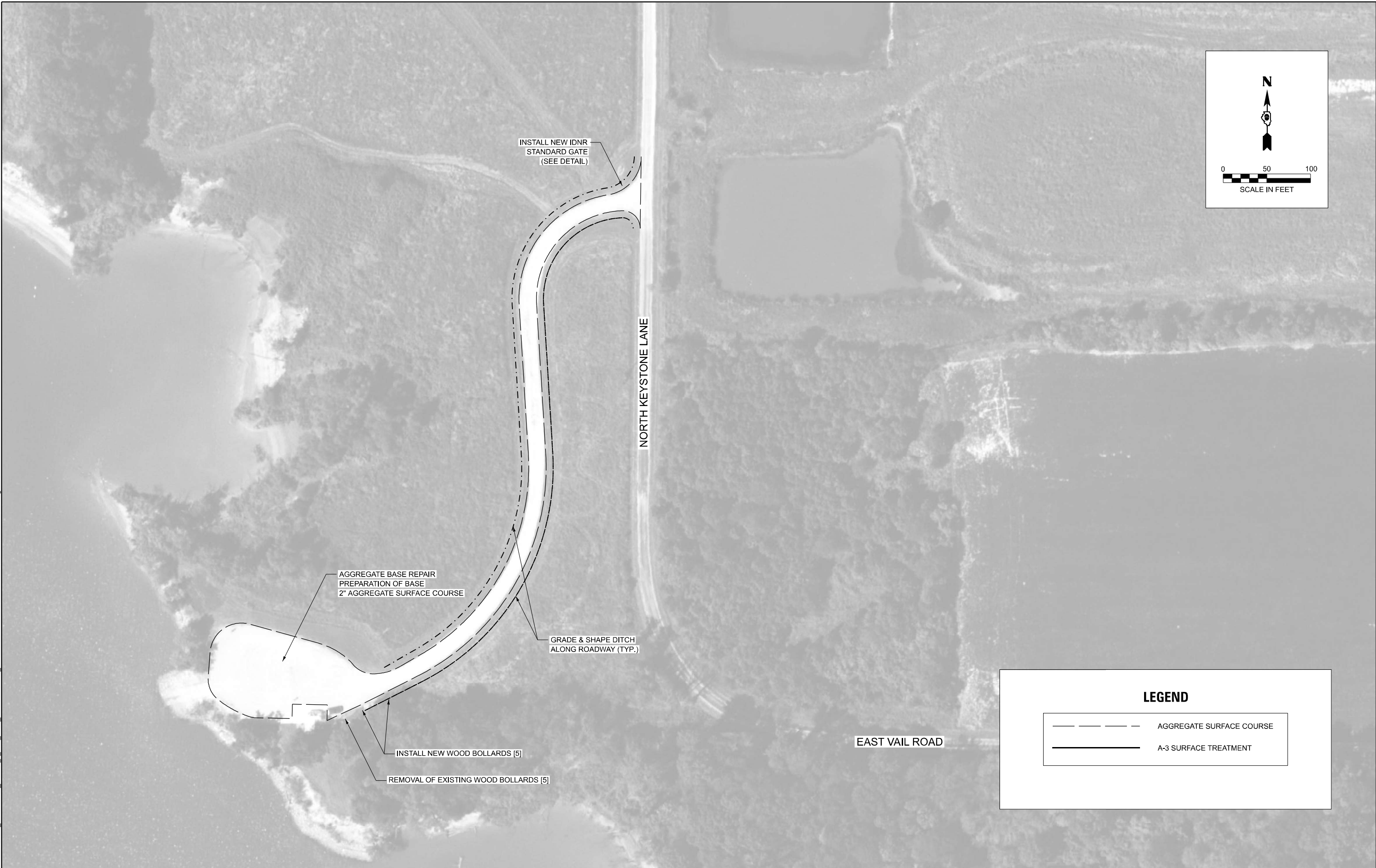
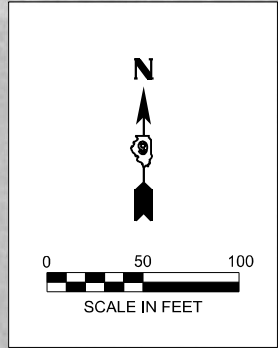
USER NAME = mamidon	DESIGNED - MJR	REVISED -
DRAWN - MLA	REVISED -	
PLOT SCALE = 200,000' / in.	CHECKED - ERO	REVISED -
PLOT DATE = 1/9/2025	DATE - 1/9/2025	REVISED -

STATE OF ILLINOIS
DEPARTMENT OF TRANSPORTATION

SITE HEADQUARTERS & PUBLIC WATERFOWL VIEWING AREA SITE IMPROVEMENTS			
SCALE: 1" = 100'	SHEET 4	OF 10 SHEETS	STA. TO STA.

F.A. RTE.	SECTION	COUNTY	TOTAL SHEETS	SHEET NO.
	PARK ROADS	JEFFERSON	27	12
ILLINOIS FED. AID PROJECT			CONTRACT NO. 46942	





LEGEND

- - - - -	AGGREGATE SURFACE COURSE
—————	A-3 SURFACE TREATMENT

MODEL: Default
 FILE NAME: P:\2024\11\21\21-034_VV PH II BDE IDNR_FGWork_Order_2_Rend Lake Phase II Plans\01-CADD\02-Shis\09\6942-shi-tile.dgn



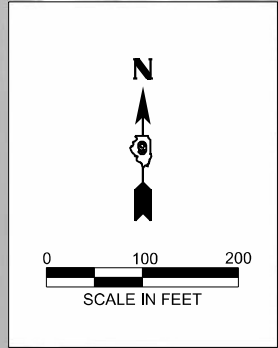
USER NAME = mamidon	DESIGNED - MJR	REVISED -	
	DRAWN - MLA	REVISED -	
PLOT SCALE = 100,000' / in.	CHECKED - ERO	REVISED -	
PLOT DATE = 1/9/2025	DATE - 1/9/2025	REVISED -	

**STATE OF ILLINOIS
DEPARTMENT OF TRANSPORTATION**

**BLUEGILL HOLE
SITE IMPROVEMENTS**

SCALE: 1" = 50' SHEET 5 OF 10 SHEETS STA. TO STA.

F.A. RTE.	SECTION	COUNTY	TOTAL SHEETS	SHEET NO.
	PARK ROADS	JEFFERSON	27	13
CONTRACT NO. 46942				
ILLINOIS FED. AID PROJECT				



NORTH CHERRYVILLE LANE

PREPARATION OF BASE
A-3 SURFACE TREATMENT

15" PIPE CULVERTS,
CLASS C, TYPE 1 WITH
METAL FLARED END
SECTION [32 L.F.]

STONE RIPRAP
CLASS A3 [10 S.Y.]

FL = 418.33

STONE RIPRAP
CLASS A3 [10 S.Y.]

FL = 417.97

EAST BONNIE ROAD

24" PIPE CULVERTS,
CLASS C, TYPE 1 WITH
METAL FLARED END
SECTION [30 L.F.]

STONE RIPRAP
CLASS A3 [10 S.Y.]

FL = 422.35

FL = 421.77

STONE RIPRAP
CLASS A3 [10 S.Y.]

REMOVE & REPLACE
DIRECTIONAL SIGN (D1)

LEGEND

	AGGREGATE SURFACE COURSE
	A-3 SURFACE TREATMENT

MODEL: Default
FILE NAME: P:\2024\11\21\21-034_VV PH II BDE IDNR FGWork Order 2_Rend Lake Phase II Plans\01-CADD\02-Shas\09\6942-sht-11.dgn



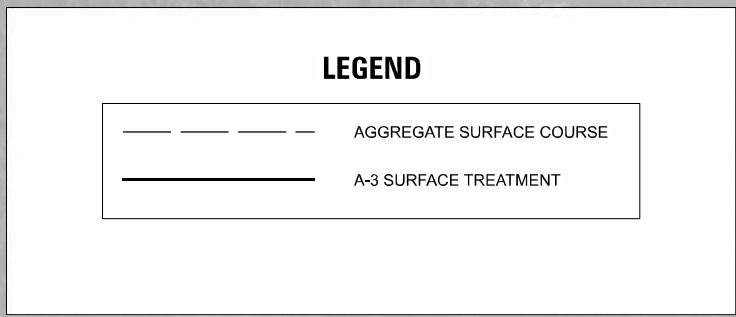
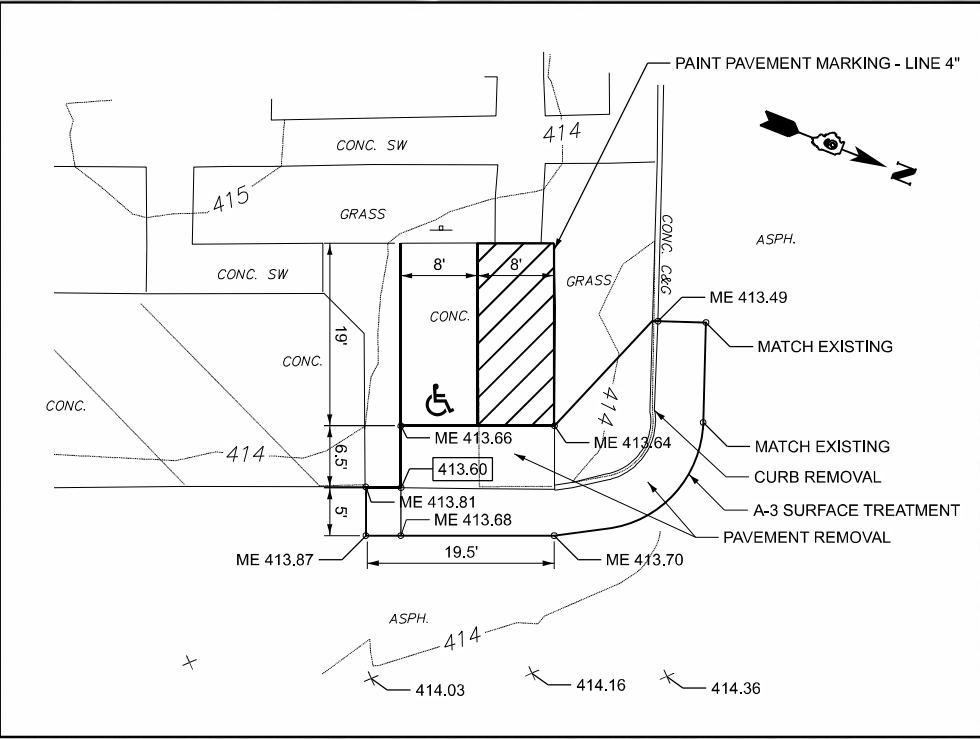
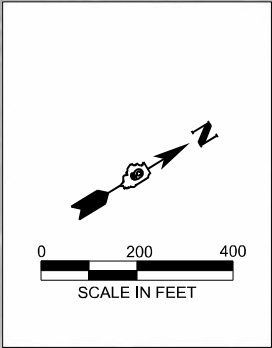
USER NAME = mamidon	DESIGNED - MJR	REVISED -
DRAWN - MLA	REVISED -	
PLOT SCALE = 200,000' / in.	CHECKED - ERO	REVISED -
PLOT DATE = 1/9/2025	DATE - 1/9/2025	REVISED -

**STATE OF ILLINOIS
DEPARTMENT OF TRANSPORTATION**

**DAREVILLE ACCESS AREA
SITE IMPROVEMENTS**

SCALE: 1" = 100' SHEET 6 OF 10 SHEETS STA. TO STA.

F.A. RTE.	SECTION	COUNTY	TOTAL SHEETS	SHEET NO.
	PARK ROADS	JEFFERSON	27	14
CONTRACT NO. 46942				
ILLINOIS FED. AID PROJECT				



MODEL: Default
 FILE NAME: P:\2024\1ME24010_PTB 210-034_VV PH I II BDE IDNR_FG\Work Order 2_Rend Lake Phase II Plans\01-CADD\02-Shis\0946942-sht-11a.dgn



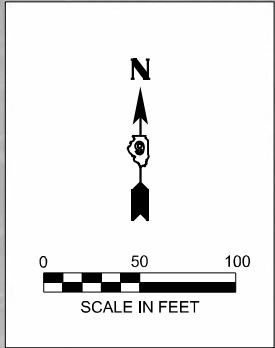
USER NAME = mamidon	DESIGNED - MJR	REVISED -
	DRAWN - MLA	REVISED -
PLOT SCALE = 399.979' / in.	CHECKED - ERO	REVISED -
PLOT DATE = 1/9/2025	DATE - 1/9/2025	REVISED -

**STATE OF ILLINOIS
DEPARTMENT OF TRANSPORTATION**

**NASON ACCESS AREA
SITE IMPROVEMENTS**

SCALE: 1" = 200' SHEET 7 OF 10 SHEETS STA. TO STA.

F.A. RTE.	SECTION	COUNTY	TOTAL SHEETS	SHEET NO.
	PARK ROADS	JEFFERSON	27	15
CONTRACT NO. 46942				
ILLINOIS FED. AID PROJECT				



AGGREGATE BASE REPAIR
PREPARATION OF BASE
2" AGGREGATE SURFACE COURSE

REMOVE & REPLACE SMALL
ENTRANCE SIGN (S6)

EAST BONNIE ROAD

LEGEND

- - - - -	AGGREGATE SURFACE COURSE
—————	A-3 SURFACE TREATMENT

MODEL: Default
 FILE NAME: P:\2024\1ME24010_PTB 210-034_VV PH II BDE IDNR_FGWork_Order 2_Rend Lake Phase II Plans\01-CADD\02-Shis\0916942-shi-title.dgn



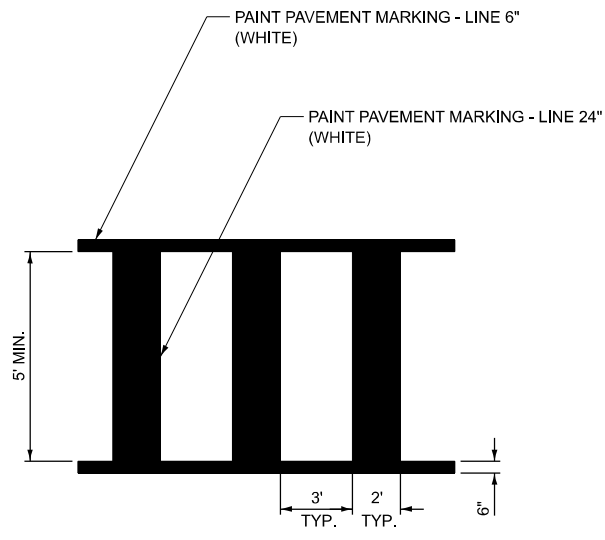
USER NAME = mamidon	DESIGNED - MJR	REVISED -
	DRAWN - MLA	REVISED -
PLOT SCALE = 100,000' / in.	CHECKED - ERO	REVISED -
PLOT DATE = 1/9/2025	DATE - 1/9/2025	REVISED -

**STATE OF ILLINOIS
DEPARTMENT OF TRANSPORTATION**

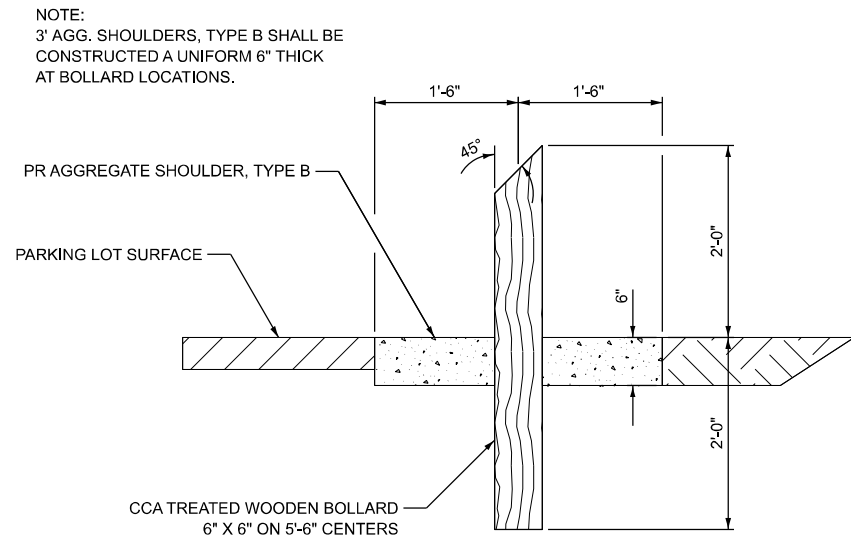
**PIN OAK FLATS ACCESS AREA
SITE IMPROVEMENTS**

SCALE: 1" = 50' SHEET 10 OF 10 SHEETS STA. TO STA.

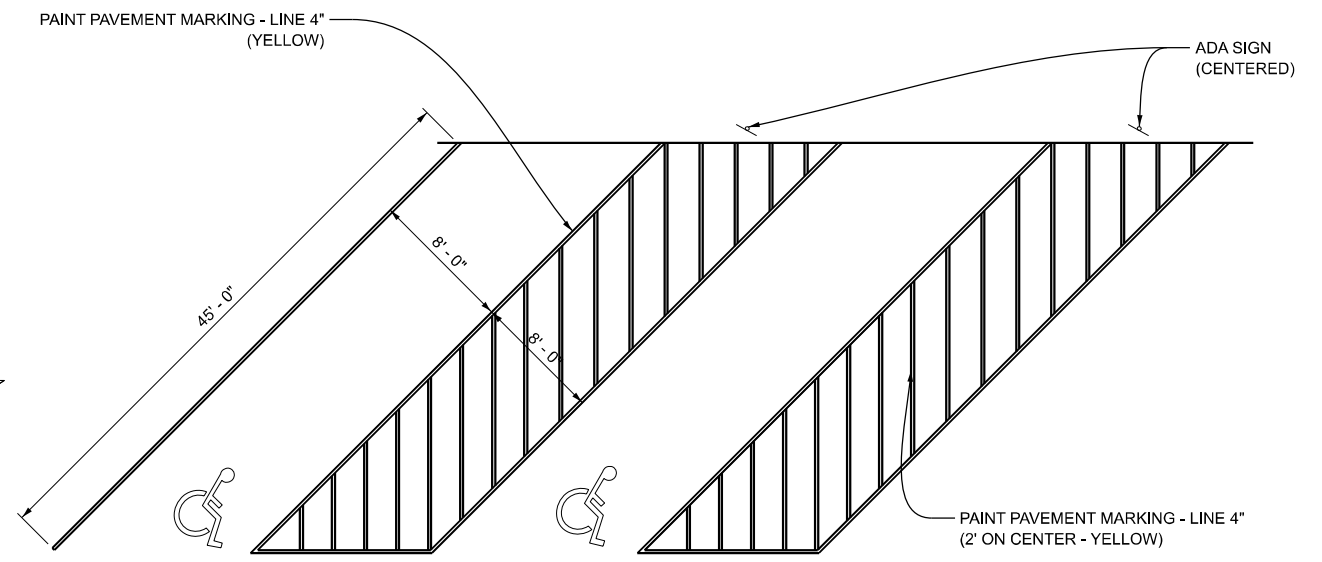
F.A. RTE.	SECTION	COUNTY	TOTAL SHEETS	SHEET NO.
	PARK ROADS	JEFFERSON	27	18
CONTRACT NO. 46942				
ILLINOIS FED. AID PROJECT				



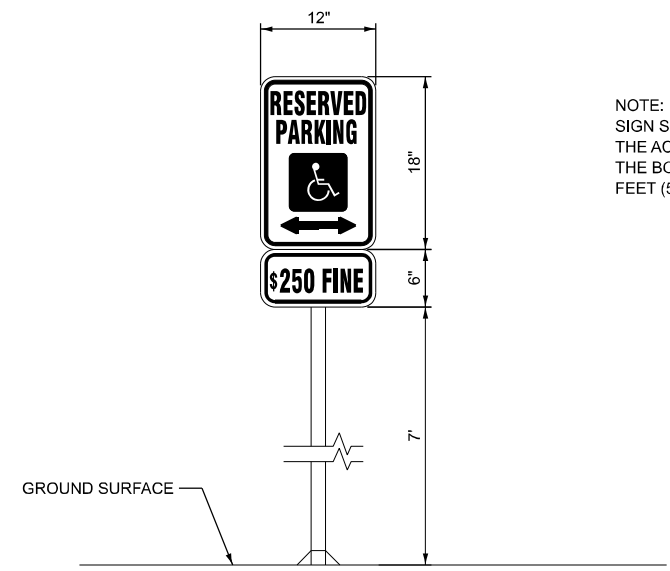
CROSSWALK PAVEMENT MARKING DETAIL



WOODEN BOLLARD DETAIL

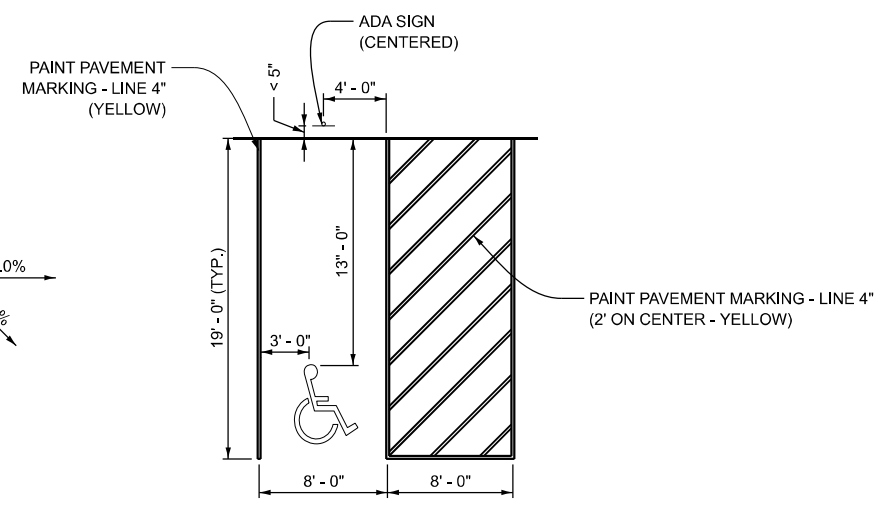
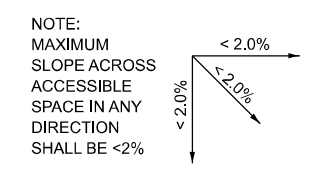


ACCESSIBLE TRAILER PARKING

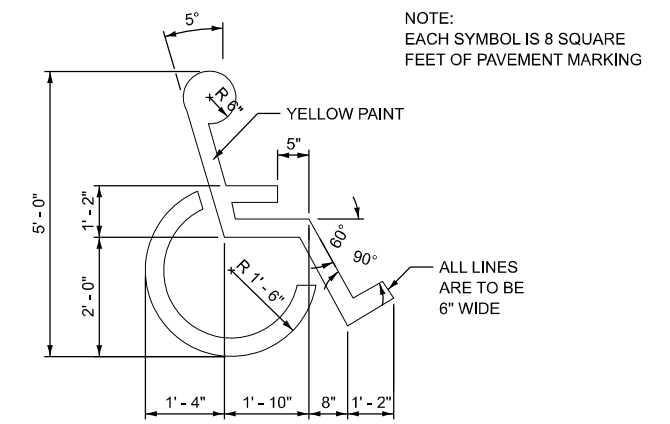


ACCESSIBLE PARKING SIGN DETAIL

NOTE:
SIGN SHALL BE MOUNTED IN THE CENTER OF THE ACCESSIBLE PARKING SPACE AND WITH THE BOTTOM OF THE SIGN AT LEAST FIVE FEET (5') ABOVE GRADE.



STANDARD ACCESSIBLE PARKING SPACE DETAIL



ACCESSIBLE PAVEMENT MARKING DETAIL

MODEL: Default
FILE NAME: P:\2024\1ME24010_PTB 2\1-0-034_VV PH I I BDE IDNR_FGWork_Order 2_Rend Lake Phase II Plans\01-CADD\02-Shis\0946942-shi-title.dgn



USER NAME = mamidon	DESIGNED - MJR	REVISED -
PLOT SCALE = 2,000 1/16"	DRAWN - MLA	REVISED -
PLOT DATE = 1/9/2025	CHECKED - ERO	REVISED -
	DATE - 1/9/2025	REVISED -

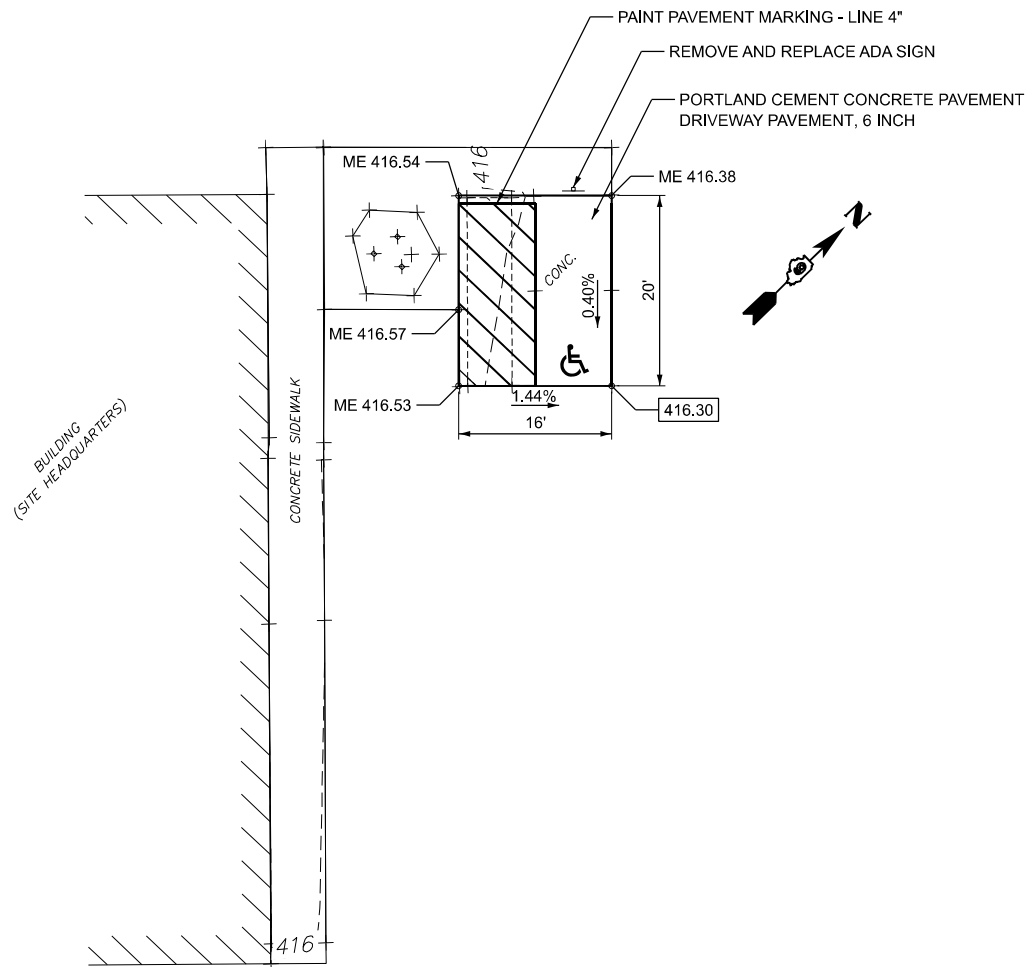
STATE OF ILLINOIS
DEPARTMENT OF TRANSPORTATION

MISCELLANEOUS DETAILS

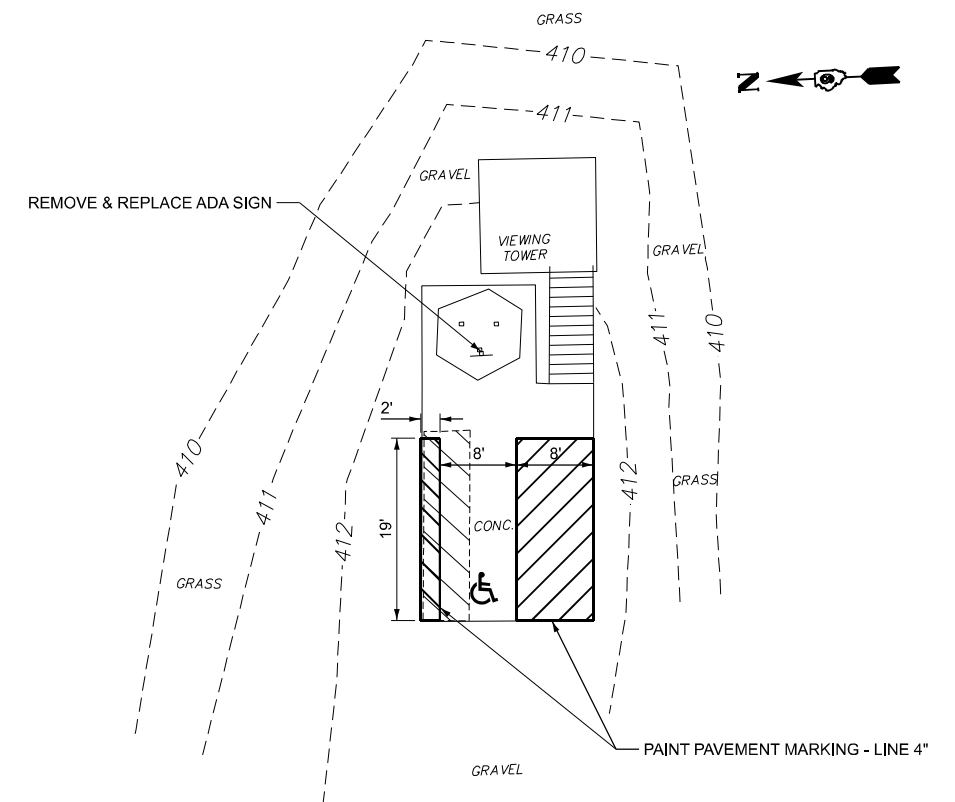
SCALE: SHEET 1 OF 9 SHEETS STA. TO STA.

F.A. RTE.	SECTION	COUNTY	TOTAL SHEETS	SHEET NO.
	PARK ROADS	JEFFERSON	27	19
CONTRACT NO. 46942				
ILLINOIS FED. AID PROJECT				

MODEL: Default
 FILE NAME: P:\2024\1ME24010_PTB 210-034_VV PH II BDE IDNR_FGWork_Order 2_Rend Lake Phase II Plans\01-CADD\02-Shis\0946942-shi-tille.dgn



**SITE HEADQUARTERS ADA PARKING STALL
 GRADING & STRIPING DETAIL**



**WILDLIFE VIEWING STAND ADA
 PARKING STALL STRIPING DETAIL**



USER NAME = mamidon	DESIGNED - MJR	REVISED -
	DRAWN - MLA	REVISED -
PLOT SCALE = 2,000' / 1" =	CHECKED - ERO	REVISED -
PLOT DATE = 1/9/2025	DATE - 1/9/2025	REVISED -

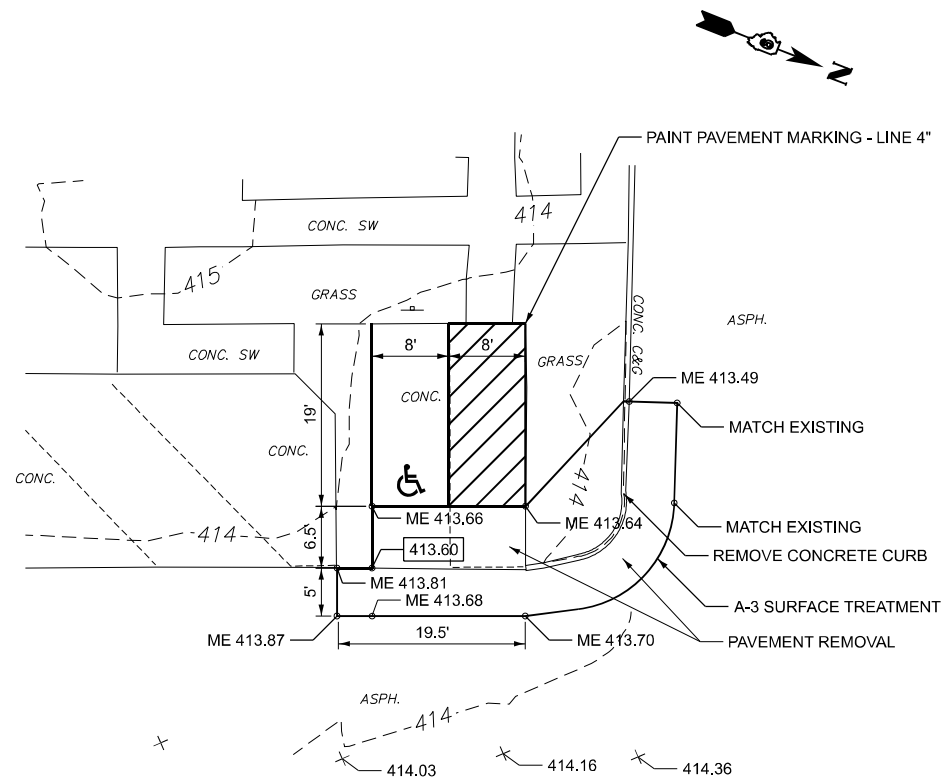
**STATE OF ILLINOIS
 DEPARTMENT OF TRANSPORTATION**

MISCELLANEOUS DETAILS

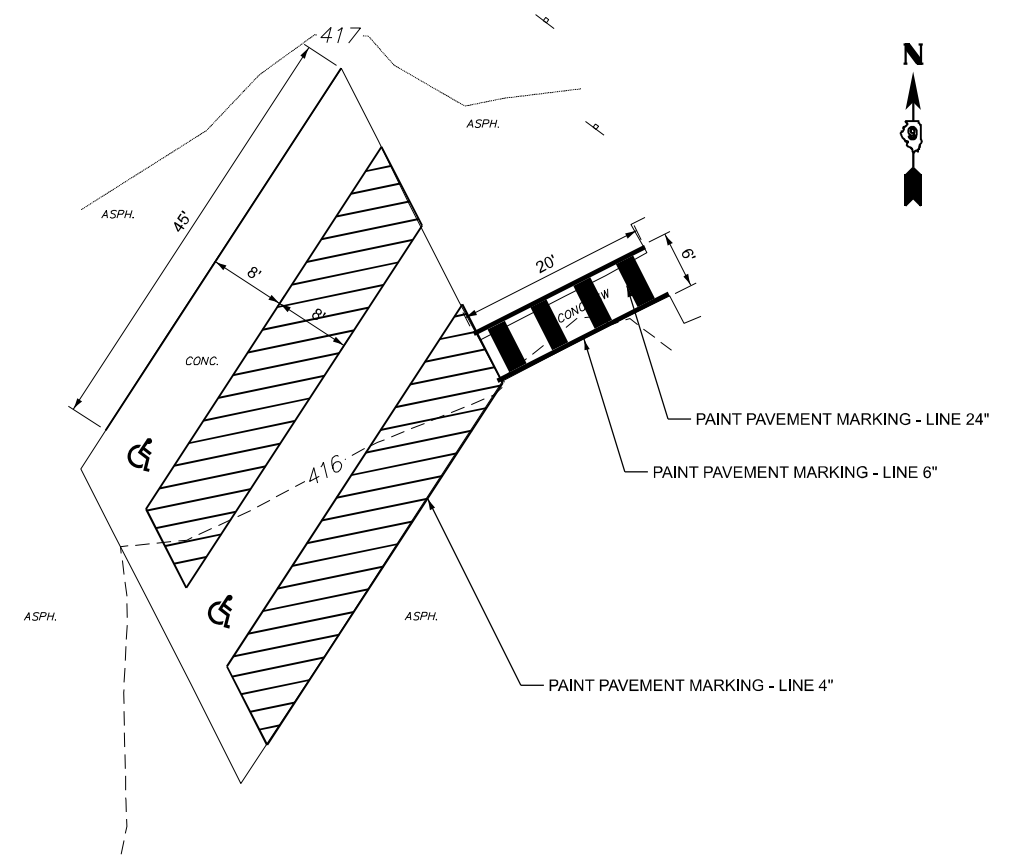
SCALE: SHEET 2 OF 9 SHEETS STA. TO STA.

F.A. RTE.	SECTION	COUNTY	TOTAL SHEETS	SHEET NO.
	PARK ROADS	JEFFERSON	27	20
CONTRACT NO. 46942				
ILLINOIS FED. AID PROJECT				

MODEL: Default
 FILE NAME: P:\2024\1ME24010_PTB 210-034_VV PH II BDE IDNR_FG\Work Order 2_Rend Lake Phase II Plans\01-CADD\02-Shis\0946942-shi-title.dgn



**NASON ACCESS AREA ADA PARKING STALL
 GRADING & STRIPING DETAIL**



**WALTONVILLE DAM ACCESS AREA ADA
 PARKING STALL STRIPING DETAIL**



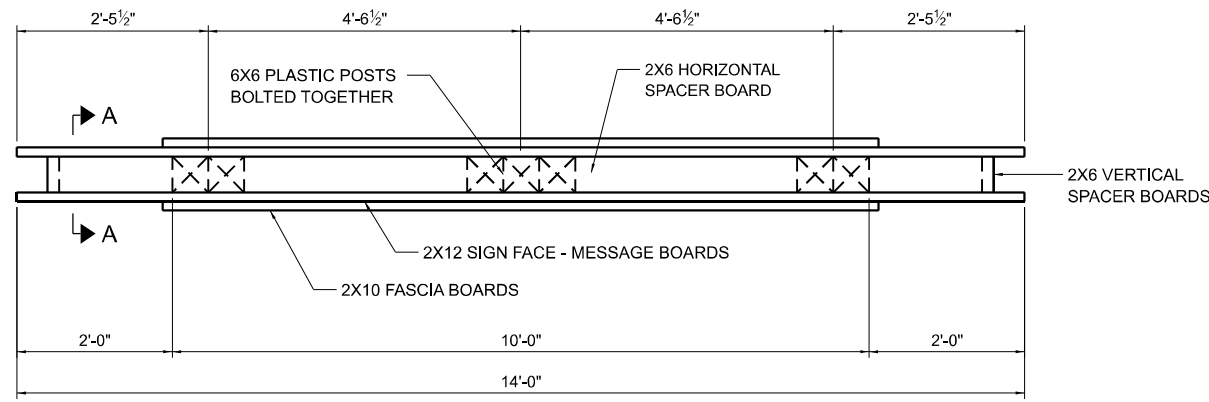
USER NAME = marnidon	DESIGNED - MJR	REVISED -
DRAWN - MLA	REVISED -	
PLOT SCALE = 2,000' / in.	CHECKED - ERO	REVISED -
PLOT DATE = 1/9/2025	DATE - 1/9/2025	REVISED -

**STATE OF ILLINOIS
 DEPARTMENT OF TRANSPORTATION**

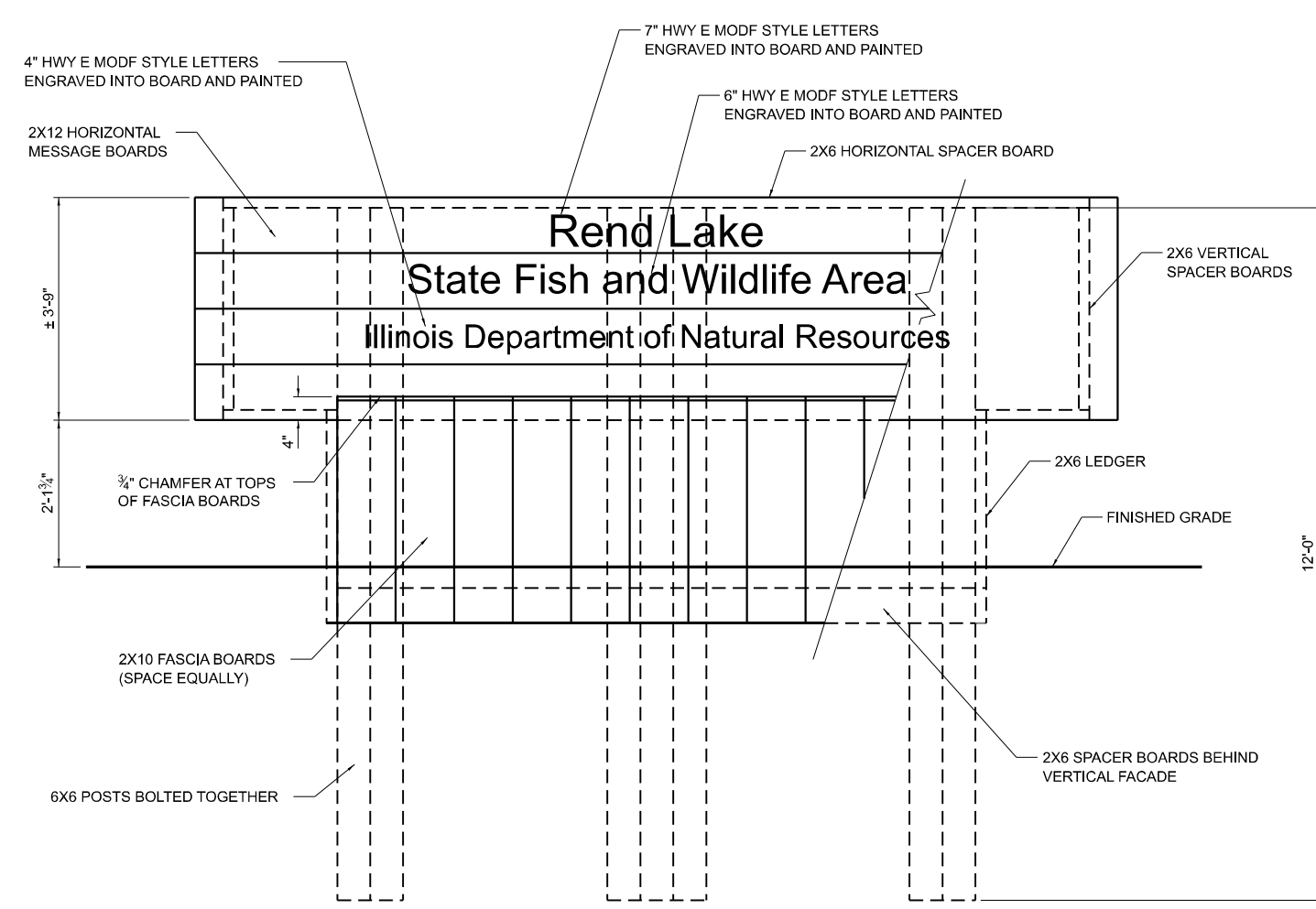
MISCELLANEOUS DETAILS

SCALE: SHEET 3 OF 9 SHEETS STA. TO STA.

F.A. RTE.	SECTION	COUNTY	TOTAL SHEETS	SHEET NO.
	PARK ROADS	JEFFERSON	27	21
CONTRACT NO. 46942				
ILLINOIS FED. AID PROJECT				



TOP VIEW



FRONT VIEW

NOTE: LETTERING IS ON BOTH SIDES OF SIGN

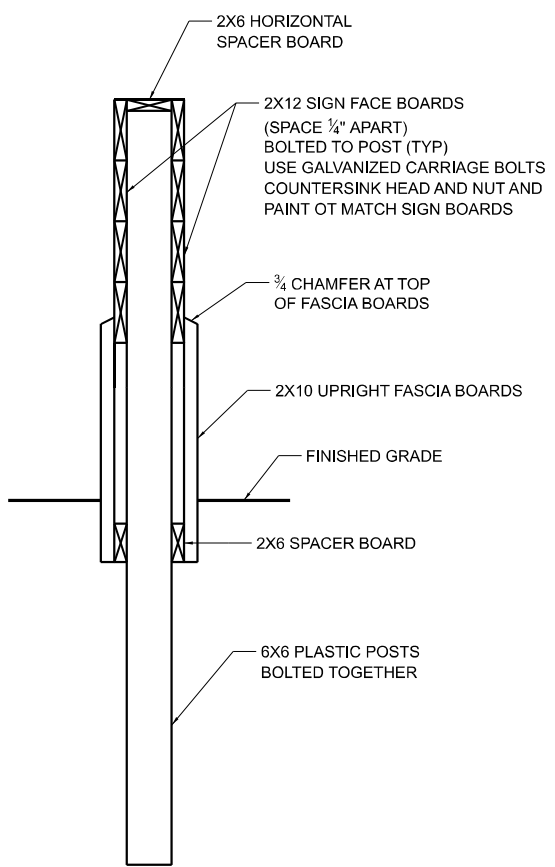
LARGE ENTRANCE SIGN

**FIBERGLASS REINFORCED RECYCLED PLASTIC LUMBER MATERIALS LIST:
ALL ITEMS TO BE BROWN IN COLOR**

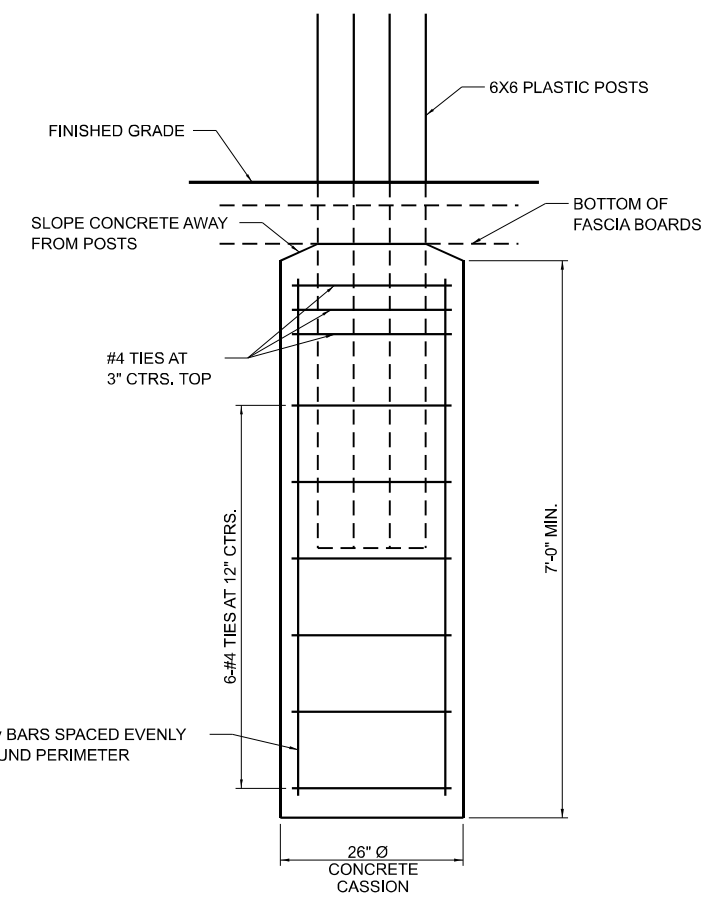
ITEM	LENGTH	QUANTITY	REMARKS
6X6 POST	12'-0"	7 EACH	BOLT POSTS TOGETHER
2X6 SPACER AND LEDGER BOARD	14'-0"	4 EACH	CUT VARIOUS LENGTHS TO FIT
2X12 MESSAGE BOARD	14'-0"	8 EACH	LETTERING ON BOTH SIDES OF SIGN
2X10 BOTTOM FASCIA BOARD	3'-4"	28 EACH	SEE DETAIL VIEW--CHAMFER TOP OF BOARD

GENERAL NOTES:

- ALL LUMBER IS FIBERGLASS REINFORCED RECYCLED PLASTIC, BROWN IN COLOR UNLESS NOTED OTHERWISE. SUBMIT SAMPLES TO IDNR LANDSCAPE ARCHITECT FOR COLOR SELECTION PRIOR TO FABRICATION.
- ALL LETTERING IS CENTERED ON SIGN AND IS UPPER AND LOWER CASE HWY E MODF OR SIMILAR FONT. PAINT LETTERS WITH 1 COAT OF PRIMER AND 2 COATS OF A WHITE, EPOXY PAINT MIXED WITH GLASS BEADS. LETTERS ARE TO BE POCKETED OUT WITH A 3/8" UPFLOOT BIT.
- CONCRETE FOUNDATION INCLUDED IN COST OF ENTRANCE SIGN.



SECTION A-A



SECTION THRU FOUNDATION

f_c = 4,000 PSI
F_y = 60,000 PSI (REINF.)

MODEL: Default
FILE NAME: P:\2024\1ME24010_PTB 21-0-034_VV PH II BDE IDNR_FGWork_Order 2_Rend Lake Phase II Plans\01-CADD\02-Shis\0946942-shi-tille.dgn



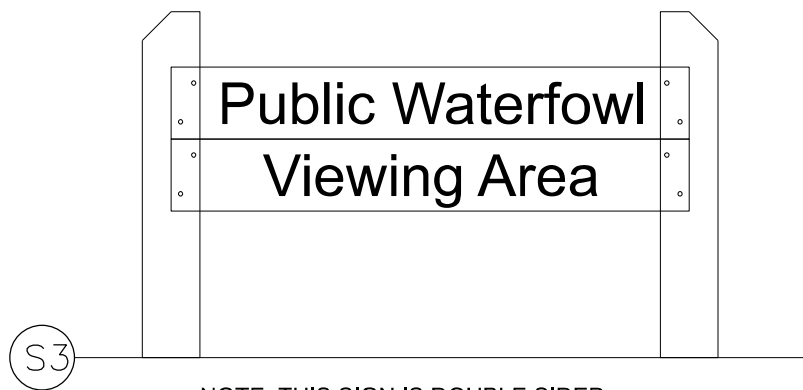
USER NAME = mamidon	DESIGNED - MJR	REVISED -
	DRAWN - MLA	REVISED -
PLOT SCALE = 20,000' / in.	CHECKED - ERO	REVISED -
PLOT DATE = 1/9/2025	DATE - 1/9/2025	REVISED -

**STATE OF ILLINOIS
DEPARTMENT OF TRANSPORTATION**

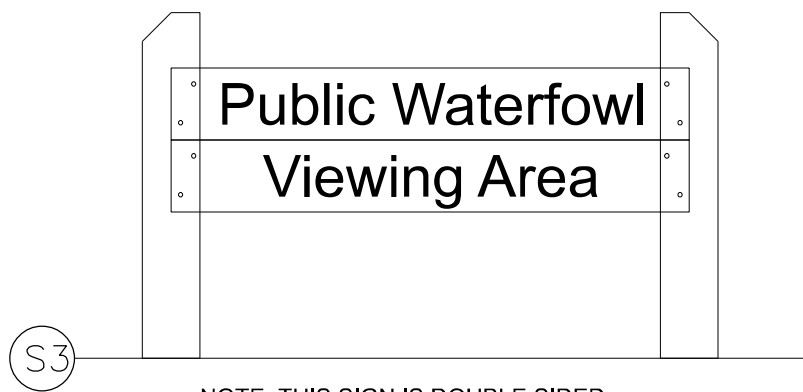
LARGE ENTRANCE SIGN DETAIL

SCALE: SHEET 5 OF 9 SHEETS STA. TO STA.

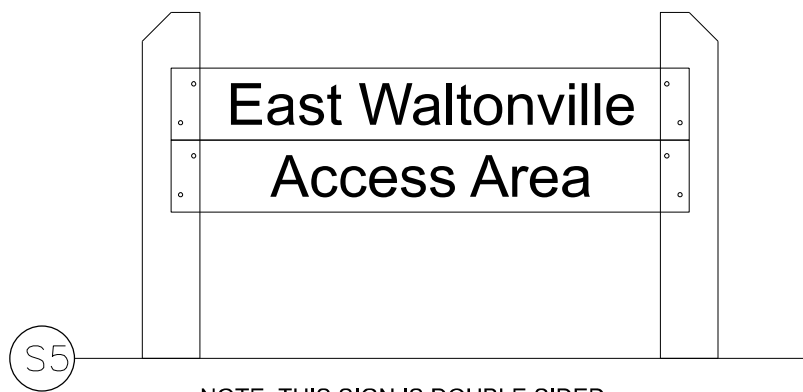
F.A. RTE.	SECTION	COUNTY	TOTAL SHEETS	SHEET NO.
	PARK ROADS	JEFFERSON	27	23
ILLINOIS FED. AID PROJECT			CONTRACT NO. 46942	



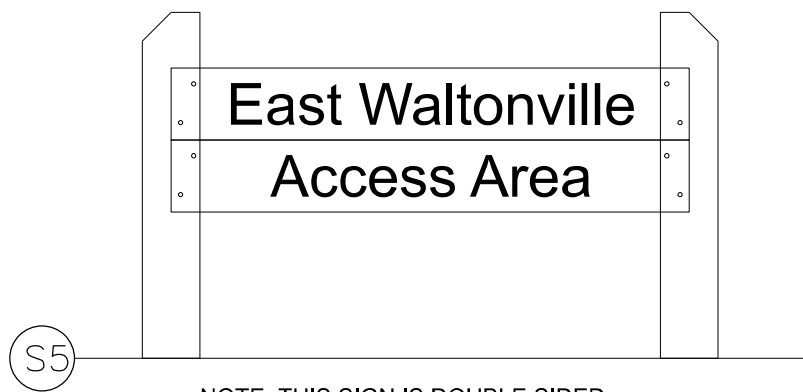
NOTE: THIS SIGN IS DOUBLE SIDED



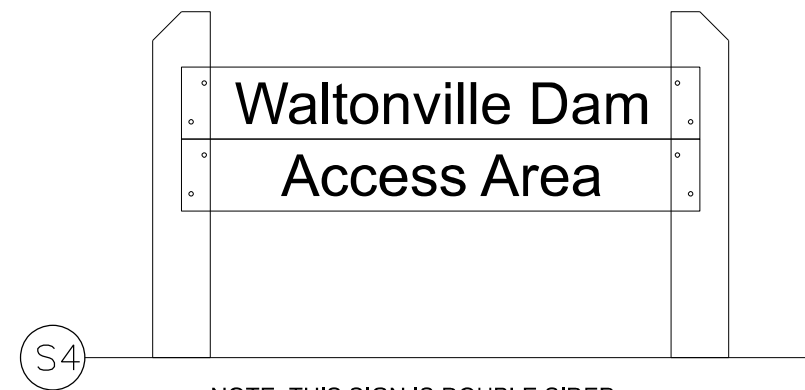
NOTE: THIS SIGN IS DOUBLE SIDED



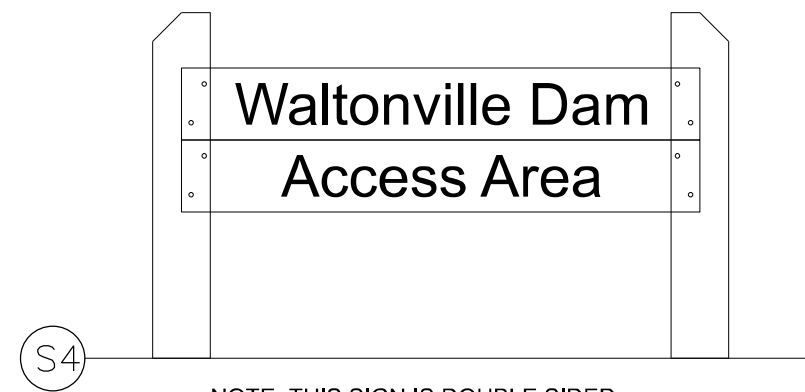
NOTE: THIS SIGN IS DOUBLE SIDED



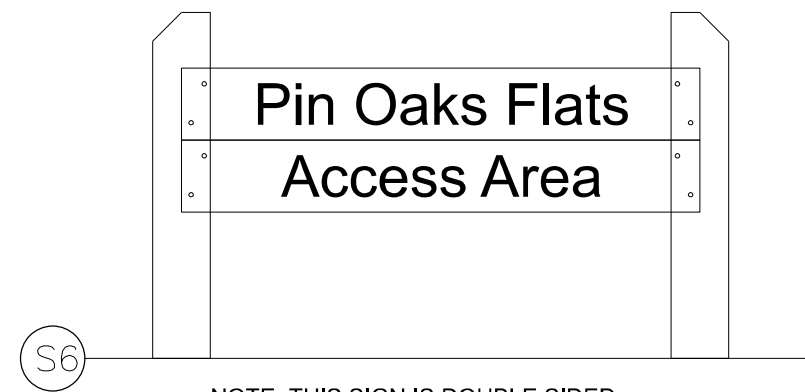
NOTE: THIS SIGN IS DOUBLE SIDED



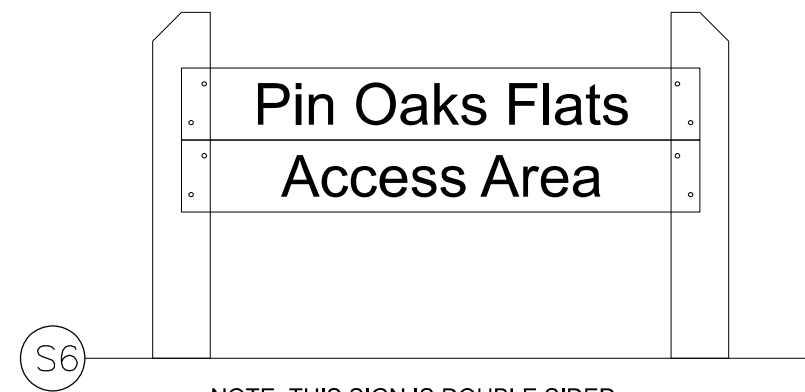
NOTE: THIS SIGN IS DOUBLE SIDED



NOTE: THIS SIGN IS DOUBLE SIDED



NOTE: THIS SIGN IS DOUBLE SIDED



NOTE: THIS SIGN IS DOUBLE SIDED

SMALL ENTRANCE SIGN

MODEL: Default
FILE NAME: P:\2024\1ME24010_PTB 210-034_VV PH II BDE IDNR_FGWork_Order 2_Rend Lake Phase II Plans\01-CADD\02-Shts\0946942-sht-tille.dgn



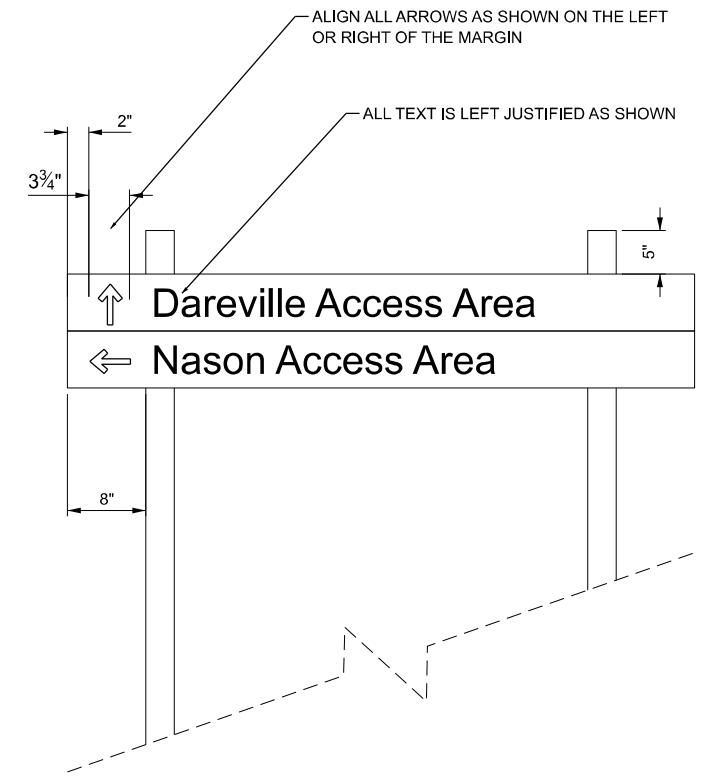
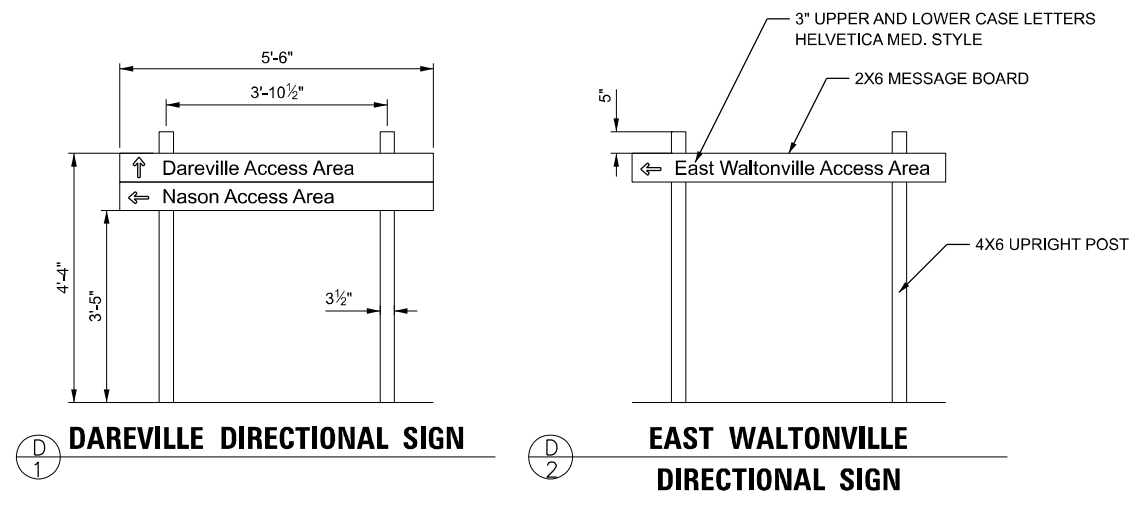
USER NAME = mamidon	DESIGNED - MJR	REVISED -
	DRAWN - MLA	REVISED -
PLOT SCALE = 2,000 1/in.	CHECKED - ERO	REVISED -
PLOT DATE = 1/9/2025	DATE - 1/9/2025	REVISED -

STATE OF ILLINOIS
DEPARTMENT OF TRANSPORTATION

SMALL ENTRANCE SIGN DETAIL

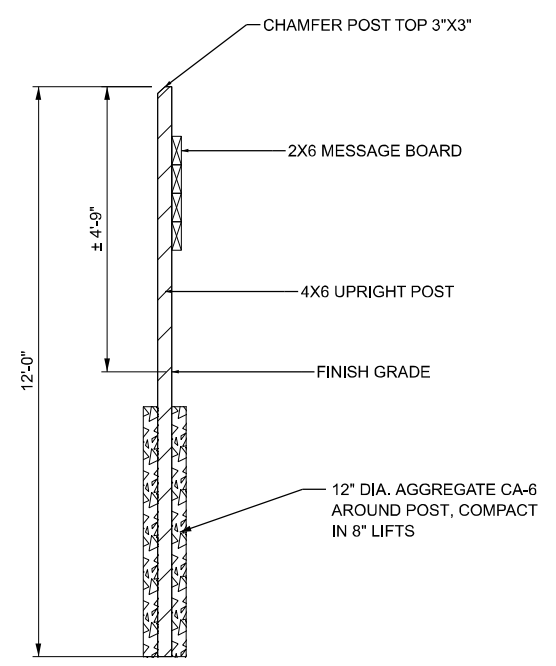
SCALE: SHEET 7 OF 9 SHEETS STA. TO STA.

F.A. RTE.	SECTION	COUNTY	TOTAL SHEETS	SHEET NO.
	PARK ROADS	JEFFERSON	27	25
CONTRACT NO. 46942				
ILLINOIS FED. AID PROJECT				



**REND LAKE STATE FISH AND WILDLIFE AREA
 INTERPRETIVE SIGNAGE COMPLETE (LETTERING ONE SIDE ONLY)
 SIGN STRUCTURE DETAIL**

ALIGNMENT DIMENSIONS DETAIL
 N.T.S.



SECT. A-A

- GENERAL NOTES:**
- ALL LUMBER IS RECYCLED PLASTIC, BROWN IN COLOR. SUBMIT SAMPLES TO IDNR LANDSCAPE ARCHITECT FOR COLOR SELECTION PRIOR TO FABRICATION.
 - MOUNTING HARDWARE AND STEEL FASTENERS (VARIOUS TYPES & SIZES) ARE NOT SHOWN, TO BE PROVIDED IN SHOP DRAWINGS REQUIRED BY CONTRACTOR. ALL EXPOSED HARDWARE ON SIGN FACES IS TO BE COUNTERSUNK AND PAINTED TO MATCH LUMBER COLOR.
 - ALL LETTERING IS ALIGNED ON THE SIGN'S LEFT MARGIN AS SHOWN. LETTER STYLE IS UPPER AND LOWER CASE HELEVETICA MEDIUM STYLE. LETTERS ARE TO BE ENGRAVED WITH A COMPUTER OR TEMPLATE DRIVEN ROUTER SYSTEM. AFTER ENGRAVING APPLY ONE COAT OF A HEAVY DUTY PRIMER PAINT THAT WILL BOND TO PLASTIC SUBSTRATE AND (2) COATS OF ACRYLIC PAINT. USE EPOXY ADDITIVES TO ASSURE ADDITIONAL BONDING. FINISH COLOR OF ALL LETTERING TO BE BRIGHT WHITE.

MODEL: Default
 FILE NAME: P:\2024\1ME24010_PTB 21-0-034_VV PH I II BDE IDNR_FGWork_Order 2_Rend Lake Phase II Plans\01-CADD\02-Shis\0946942-shi-title.dgn



USER NAME = mamidon	DESIGNED - MJR	REVISED -
	DRAWN - MLA	REVISED -
PLOT SCALE = 2,000' / in.	CHECKED - ERO	REVISED -
PLOT DATE = 1/9/2025	DATE - 1/9/2025	REVISED -

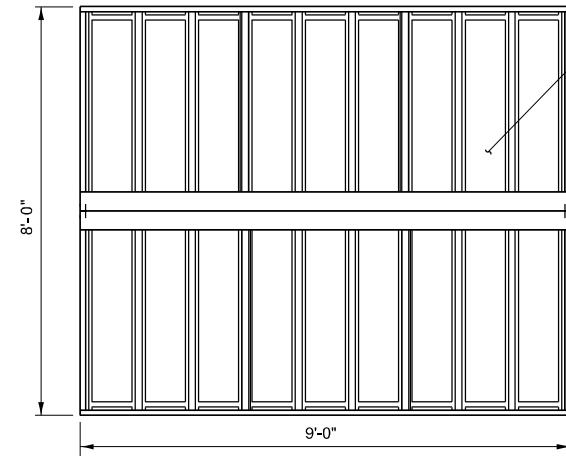
**STATE OF ILLINOIS
 DEPARTMENT OF TRANSPORTATION**

DIRECTIONAL SIGN DETAIL

SCALE: SHEET 8 OF 9 SHEETS STA. TO STA.

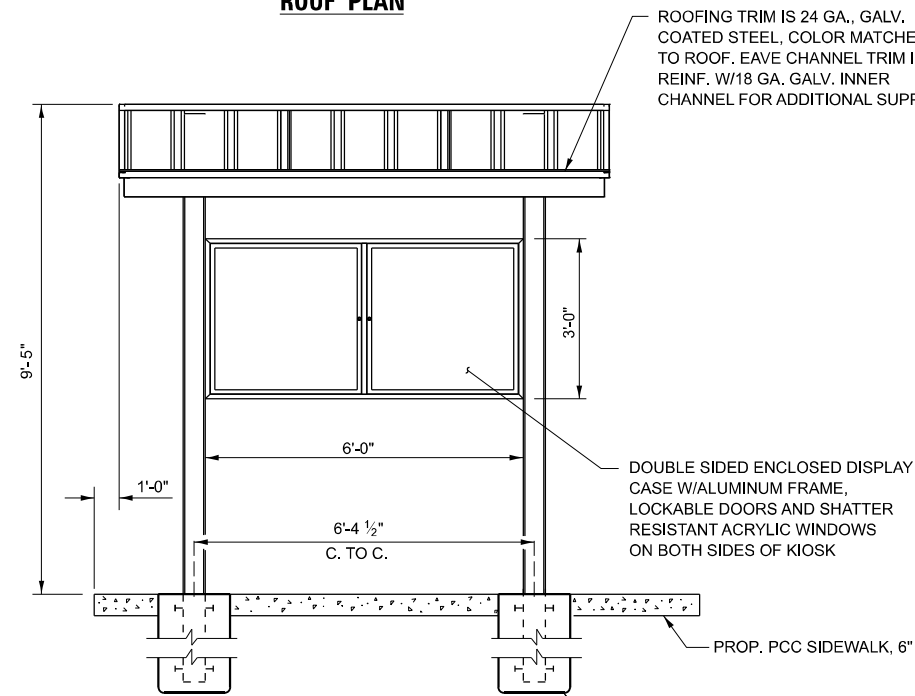
F.A. RTE.	SECTION	COUNTY	TOTAL SHEETS	SHEET NO.
	PARK ROADS	JEFFERSON	27	26
CONTRACT NO. 46942				
ILLINOIS FED. AID PROJECT				

MODEL: Default
 FILE NAME: P:\2024\1ME24010_PTB 21\0-034_VV PH II BDE IDNR_FGWork_Order 2_Rend Lake Phase II Plans\01-CADD\02-Shis\0946942-shi-tille.dgn



24 GA., GALVALUME COATED, PAINTED, STEEL ROOFING PANELS. SEE MANUFACTURER'S COLOR MATRIX FOR AVAILABLE COLORS.

ROOF PLAN



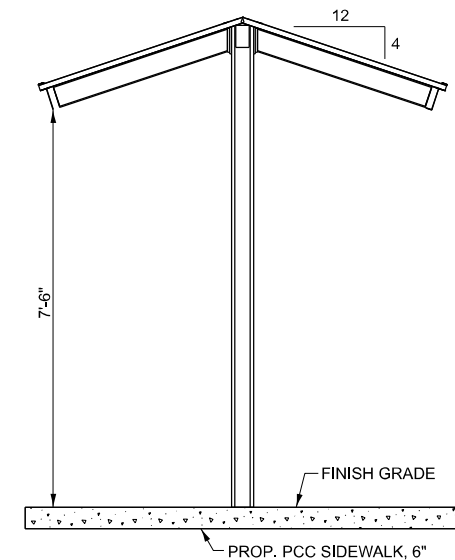
ROOFING TRIM IS 24 GA. GALV. COATED STEEL, COLOR MATCHED TO ROOF. EAVE CHANNEL TRIM IS REINF. W/18 GA. GALV. INNER CHANNEL FOR ADDITIONAL SUPPORT.

DOUBLE SIDED ENCLOSED DISPLAY CASE W/ALUMINUM FRAME, LOCKABLE DOORS AND SHATTER RESISTANT ACRYLIC WINDOWS ON BOTH SIDES OF KIOSK

PROP. PCC SIDEWALK, 6"

POST FOUNDATIONS PER MANUFACTURERS SPECIFICATIONS, FLUSH WITH PCC SIDEWALK, 6"

FRONT ELEVATION



SIDE VIEW

INFORMATION KIOSK DETAILS



USER NAME = mamidon	DESIGNED - MJR	REVISED -
	DRAWN - MLA	REVISED -
PLOT SCALE = 2,000 1/16"	CHECKED - ERO	REVISED -
PLOT DATE = 1/9/2025	DATE - 1/9/2025	REVISED -

**STATE OF ILLINOIS
 DEPARTMENT OF TRANSPORTATION**

INFORMATION KIOSK DETAIL

SCALE: SHEET 9 OF 9 SHEETS STA. TO STA.

F.A. RTE.	SECTION	COUNTY	TOTAL SHEETS	SHEET NO.
	PARK ROADS	JEFFERSON	27	27
CONTRACT NO. 46942				
ILLINOIS FED. AID PROJECT				