

03-07-2025 LETTING ITEM 009

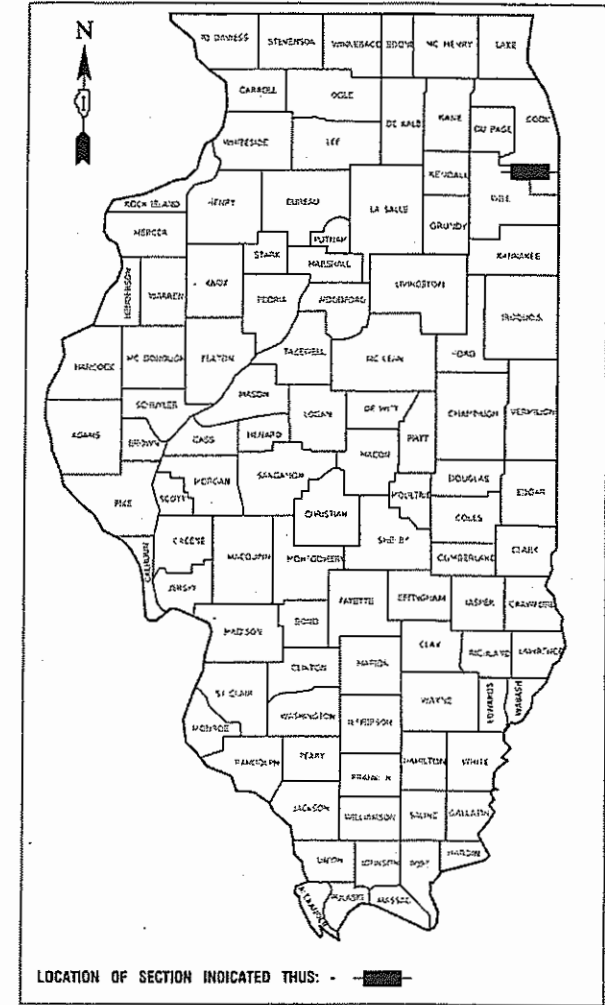
STATE OF ILLINOIS
DEPARTMENT OF TRANSPORTATION

F. & U. ETC.	SECTION	COUNTY	TOTAL SHEETS	SHEET NO.
5270	21-00067-00-RS	COOK	24	1
ILLINOIS		CONTRACT NO. 61L15		

PLANS FOR PROPOSED FEDERAL AID HIGHWAY

ROUTE 5270 (207TH STREET)
CICERO AVENUE TO PULASKI ROAD
STREET RESURFACING
SECTION NO.: 21-00067-00-RS
PROJECT NO.: L6L2(866)
VILLAGE OF MATTESON
COOK COUNTY
JOB NO.: C-91-057-25

FOR INDEX OF SHEETS, SEE SHEET NO. 2
FOR HIGHWAY STANDARDS, SEE SHEET NO. 2



	207TH STREET
2022 ADT-	2,450
POSTED SPEED LIMIT-	25 MPH
FUNCTIONAL CLASSIFICATION-	MINOR COLLECTOR

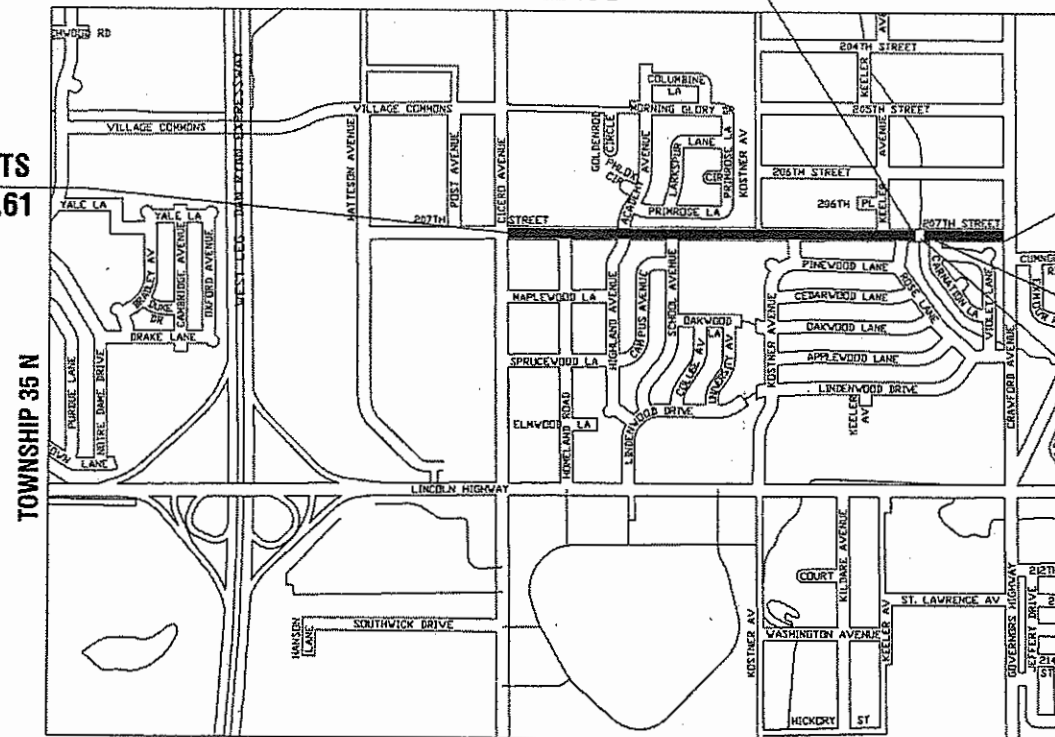
BEGIN OMISSION
207TH STREET STA 66 + 35.16
RANGE 13 E

BEGINNING OF IMPROVEMENTS
207TH STREET STA 25 + 05.61

END OF IMPROVEMENTS
207TH ST STA 76 + 87.07

END OMISSION
207TH ST STA 68 + 85.16

SN 016-7445



SCALES { PLAN - 1"=50'



FULL SIZE PLANS HAVE BEEN PREPARED USING STANDARD
ENGINEERING SCALES, REDUCED SIZED PLANS WILL NOT
CONFORM TO STANDARD SCALES, IN MAKING MEASUREMENTS
ON REDUCED PLANS, THE ABOVE SCALES MAY BE USED.

J. U. L. I. E.
JOINT UTILITY LOCATION INFORMATION FOR EXCAVATION
1 - 800 - 892 - 0123 or 811

CONTRACT NO. 61L15

LOCATION MAP

GROSS LENGTH=5,181 FEET=0.98 MILES
NET LENGTH=4,931 FEET=0.93 MILES

PREPARED BY OR UNDER THE
DIRECT SUPERVISION OF:

William P. Dolan
12-05-24



LICENSE EXPIRES: 11/30/25

STATE OF ILLINOIS DEPARTMENT OF TRANSPORTATION	
APPROVED	<i>[Signature]</i> VILLAGE OF MATTESON, PRESIDENT
PASSED	<i>[Signature]</i> DISTRICT 1 ENGINEER OF LOCAL ROADS & STREETS
RELEASED FOR BID BASED ON LIMITED REVIEW	<i>[Signature]</i> REGIONAL ENGINEER

PRINTED BY THE AUTHORITY
OF THE STATE OF ILLINOIS

FEDERAL AID PROGRAM ENGINEER: CARMEN RAMOS, PE, SCHAUMBURG, IL
CONSULTANTS: ROBINSON ENGINEERING, LTD. 708-331-6700

INDEX OF SHEETS

1	COVER SHEET
2	INDEX OF SHEETS, HIGHWAY STANDARDS AND GENERAL NOTES
3-6	SUMMARY OF QUANTITIES
7	TYPICAL CROSS SECTIONS
8-9	ALIGNMENT AND TIES
10-12	PROPOSED IMPROVEMENT PLAN
13-14	PAVEMENT MARKING AND SIGNAGE
15-24	IDOT DISTRICT 1 STANDARDS

HIGHWAY STANDARDS

000001-08	STANDARD SYMBOLS, ABBREVIATIONS AND PATTERNS
424001-12	PERPENDICULAR CURB RAMPS FOR SIDEWALKS
424016-06	MID-BLOCK CURB RAMPS FOR SIDEWALKS
442201-03	CLASS C AND D PATCHES
606001-08	CONCRETE CURB TYPE B AND COMBINATION CONCRETE CURB AND GUTTER
701001-02	OFF-RD OPERATIONS, 2L, 2W, MORE THAN 15' (4.5m) AWAY
701006-05	OFF ROAD OPERATIONS, 2L, 2W, 15'(4.5m) TO 24"(600mm) FROM PAVEMENT EDGE
701011-04	OFF ROAD OPERATIONS, MULTILANE, 15'(4.5m) TO 24"(600mm) FROM PAVEMENT EDGE
701301-04	LANE CLOSURE, 2L, 2W, SHORT TIME OPERATIONS
701311-03	LANE CLOSURE, 2L, 2W, MOVING OPERATIONS - DAY ONLY
701501-06	URBAN LANE CLOSURE, 2L, 2W, UNDIVIDED
701701-10	URBAN LANE CLOSURE, MULTILANE INTERSECTION
701801-06	SIDEWALK, CORNER OR CROSSWALK CLOSURE
701901-10	TRAFFIC CONTROL DEVICES
720001-01	SIGN PANEL MOUNTING DETAILS
720006-04	SIGN PANEL ERECTION DETAILS
720011-01	METAL POSTS FOR SIGNS MARKERS AND DELINEATORS
729001-01	APPLICATIONS OF TYPES A & B METAL POSTS (FOR SIGNS & MARKERS)
780001-05	TYPICAL PAVEMENT MARKINGS
886001-01	DETECTOR LOOP INSTALLATIONS
886006-01	TYPICAL LAYOUTS FOR DETECTION LOOPS

DISTRICT ONE DETAILS

BD-22	PAVEMENT PATCHING FOR HMA SURFACED PAVEMENT
BD-32	BUTT JOINTS AND HMA TAPER DETAILS
TC-10	TRAFFIC CONTROL AND PROTECTION FOR SIDE ROADS, INTERSECTIONS AND DRIVEWAYS
TC-11	RAISED REFLECTIVE PAVEMENT MARKERS (SNOW-PLOW RESISTANT)
TC-13	DISTRICT ONE TYPICAL PAVEMENT MARKINGS
TC-16	SHORT TERM PAVEMENT MARKING LETTERS AND SYMBOLS
TC-22	ARTERIAL ROAD INFORMATION SIGN
TC-26	DRIVEWAY ENTRANCE SIGNING
TS-05	DISTRICT ONE STANDARD TRAFFIC SIGNAL DESIGN DETAILS
TS-07	DETECTOR LOOP INSTALLATION DETAIL FOR ROADWAY RESURFACING

GENERAL NOTES

- ITEMS OF WORK LISTED IN THE SUMMARY OF QUANTITIES NOT SPECIFICALLY CALLED OUT ON THE PLANS SHALL BE PERFORMED AS DIRECTED BY THE ENGINEER.
- THE ROBINSON ENGINEERING, LTD. FIELD OFFICE (708-331-6700), AND THE PUBLIC WORKS DIRECTOR, AT THE VILLAGE OF MATTESON (708-748-1411), SHALL BE NOTIFIED THREE (3) WORKING DAYS BEFORE CONSTRUCTION BEGINS.
- BEFORE STARTING ANY EXCAVATION THE CONTRACTOR SHALL CALL "J.U.L.I.E." AT (800) 892-0123 OR 811 AND (312) 744-7000 FOR FIELD LOCATIONS OF BURIED ELECTRIC, TELEPHONE AND GAS UTILITIES. (48 HOUR NOTIFICATION REQUIRED)
- UTILITIES INDICATED ON THE PLANS ARE PROVIDED FOR THE CONTRACTOR'S USE AND ARE BASED UPON INFORMATION AVAILABLE AT THE TIME OF THE ADVERTISEMENT FOR BIDS. THE OWNER AND ENGINEER DO NOT GUARANTEE THE ACCURACY OF UTILITY INFORMATION.
- IT SHALL BE THE CONTRACTOR'S RESPONSIBILITY TO VERIFY ALL DIMENSIONS AND CONDITIONS EXISTING IN THE FIELD PRIOR TO CONSTRUCTION AND ORDERING OF MATERIALS.
- THE THICKNESS OF HMA MIXTURE STATED IN THE SPECIFICATIONS IS THE NOMINAL THICKNESS. DEVIATIONS FROM THE NOMINAL THICKNESS WILL BE PERMITTED WHEN SUCH DEVIATIONS OCCUR DUE TO IRREGULARITIES IN THE EXISTING SURFACE OR BASE ON WHICH THE HMA SURFACE IS PLACED.
- ANY LOOSE MATERIAL DEPOSITED IN THE FLOW LINE OF DITCHES, GUTTERS OR OTHER DRAINAGE STRUCTURES SHALL BE REMOVED BY THE END OF EACH DAY BY THE CONTRACTOR.
- CLASS D PATCHING QUANTITIES FOR THIS CONTRACT SHALL BE PERFORMED AT THE DIRECTION OF THE ENGINEER AFTER PAVEMENT MILLING. PATCHES WITHIN THE ROADWAY SHALL BE PERFORMED AFTER MILLING.
- CONTRACTOR SHALL TAKE PRECAUTION BY PRESERVING EXISTING TREES WITHIN THE RIGHT OF WAY. IF ANY DAMAGE OCCURS, TREES SHALL BE REPLACED IN KIND PER ARTICLE 201.07 REPAIR OR REPLACEMENT OF EXISTING PLANT MATERIAL REQUIREMENTS STATED HEREIN.
- NO PAVEMENT PATCHING SHALL BE PERMITTED AFTER FRIDAY AT 3:00 PM OF EACH AND EVERY WEEK AND NO HOLES WILL BE ALLOWED TO REMAIN OPEN OVERNIGHT OR OVER THE WEEKEND.
- ALL EQUIPMENT SHALL BE REMOVED OFF THE VILLAGE STREETS DURING ALL HOLIDAY WEEKENDS AS COORDINATED WITH THE VILLAGE.
- HMA PAVING SHALL BE PERFORMED WITH HOT JOINTS.
- IT IS THE CONTRACTOR'S RESPONSIBILITY TO CONTACT IDOT'S TRAFFIC SIGNAL MAINTENANCE CONTRACTOR FOR ALL LOCATES RELATED TO THE TRAFFIC SIGNAL EQUIPMENT.
- THE CONTRACTOR SHALL CONTACT KALPANA KANNAN-HOSADURGA, THE DISTRICT ONE TRAFFIC CONTROL SUPERVISOR, AT KALPANA.KANNAN-HOSADURGA@ILLINOIS.GOV A MINIMUM OF 72 HOURS IN ADVANCE OF BEGINNING WORK.
- EXISTING VEGETATED AREAS (TREES, SHRUBS, VEGETATIVE BUFFERS, TURF AREAS, ETC.) WHERE DISTURBANCE IS NOT OCCURRING (INCLUDING AREAS OUTSIDE THE PROJECT LIMITS) SHALL NOT BE DISTURBED TO ENSURE THAT EXISTING VEGETATION IS PRESERVED HEALTHY TO MINIMIZE SOIL EROSION AND TO ELIMINATE SOIL COMPACTION. NO MATERIALS ARE TO BE STORED OR VEHICLES DRIVEN OR PARKED WITHIN THESE UNDISTURBED AREAS AT ANY TIME.

FILE NAME = 21R0338-INDX-01 - P01	USER NAME =	DESIGNED -- MW	REVISED --	STATE OF ILLINOIS DEPARTMENT OF TRANSPORTATION	207TH STREET ROADWAY RESURFACING CICERO AVENUE TO PULASKI ROAD INDEX OF SHEETS, HIGHWAY STANDARDS AND GENERAL NOTES			F.A.U. RTE.	SECTION	COUNTY	TOTAL SHEETS	SHEET NO.	
	CHECKED -- WPD	REVISIED --	5270					21-00067-00-RS	COOK	24	2		
	PLOT SCALE =	DRAWN -- RG	REVISED --		SCALE: NONE			SHEET NO. 2 OF 24 SHEETS			STA. TO STA.		
	PLOT DATE = 12-05-24	CHECKED -- AG	REVISED --		FED. ROAD DIST. NO. 1			ILLINOIS			FED. AID PROJECT L6L2(866)		

CODE NO.	PAY ITEM	UNIT	TOTAL QUANTITY	FED 80%	FED 80%
				VILLAGE 20%	VILLAGE 20%
			CONSTRUCTION TYPE CODE		
			0005	0021	
20200100	EARTH EXCAVATION	CU YD	15	15	
20201200	REMOVAL AND DISPOSAL OF UNSUITABLE MATERIAL	CU YD	150	150	
21101615	TOPSOIL FURNISH AND PLACE, 4"	SQ YD	950	950	
25000400	NITROGEN FERTILIZER NUTRIENT	POUND	17	17	
25000500	PHOSPHORUS FERTILIZER NUTRIENT	POUND	17	17	
25000600	POTASSIUM FERTILIZER NUTRIENT	POUND	17	17	
25200110	SODDING, SALT TOLERANT	SQ YD	950	950	
25200200	SUPPLEMENTAL WATERING	UNIT	30	30	
28000250	TEMPORARY EROSION CONTROL SEEDING	POUND	20	20	
28000510	INLET FILTERS	EACH	35	35	
30300001	AGGREGATE SUBGRADE IMPROVEMENT	CU YD	150	150	
35101600	AGGREGATE BASE COURSE, TYPE B 4"	SQ YD	160		160
35800100	PREPARATION OF BASE	SQ YD	6,600	6,600	
35800200	AGGREGATE BASE REPAIR	TON	370	370	
40201000	AGGREGATE FOR TEMPORARY ACCESS	TON	150	150	

* SPECIALTY ITEM

FILE NAME = 21R0338-QUAN-01 - QTY01	USER NAME =	DESIGNED -- MW	REVISED --	STATE OF ILLINOIS DEPARTMENT OF TRANSPORTATION	207TH STREET ROADWAY RESURFACING CICERO AVENUE TO PULASKI ROAD SUMMARY OF QUANTITIES			F.A.U. RTE. 5270	SECTION 21-00067-00-RS	COUNTY COOK	TOTAL SHEETS 24	SHEET NO. 3
	PLOT SCALE =	CHECKED -- WD	REVISED --		SCALE: NONE	SHEET NO. 3	OF 24 SHEETS	STA.	TO STA.	FED. ROAD DIST. NO. 1	ILLINOIS	FED. AID PROJECT L6L2(866)
	PLOT DATE = 12-05-24	DRAWN -- MD	REVISED --									
		CHECKED -- AG	REVISED --									

CODE NO.	PAY ITEM	UNIT	TOTAL QUANTITY	FED 80%	FED 80%
				VILLAGE 20%	VILLAGE 20%
			ROADWAY	SAFETY	
CONSTRUCTION TYPE CODE					
			0005	0021	
40600290	BITUMINOUS MATERIALS (TACK COAT)	POUND	13,420	13,420	
40600370	LONGITUDINAL JOINT SEALANT	FOOT	5,700	5,700	
40600400	MIXTURE FOR CRACKS, JOINTS, AND FLANGEWAYS	TON	30	30	
40600982	HOT-MIX ASPHALT SURFACE REMOVAL - BUTT JOINT	SQ YD	225	225	
40602978	HOT-MIX ASPHALT BINDER COURSE, IL-19.0, N50	TON	2,865	2,865	
40604060	HOT-MIX ASPHALT SURFACE COURSE, IL-9.5, MIX "D", N50	TON	1,720	1,720	
42300300	PORTLAND CEMENT CONCRETE DRIVEWAY PAVEMENT, 7 INCH	SQ YD	250	250	
42400200	PORTLAND CEMENT CONCRETE SIDEWALK 5 INCH	SQ FT	1,365		1,365
42400800	DETECTABLE WARNINGS	SQ FT	220		220
44000164	HOT-MIX ASPHALT SURFACE REMOVAL, 3 3/4"	SQ YD	19,880	19,880	
44000200	DRIVEWAY PAVEMENT REMOVAL	SQ YD	400	400	
44000500	COMBINATION CURB AND GUTTER REMOVAL	FOOT	4,890	4,890	
44000600	SIDEWALK REMOVAL	SQ FT	2,535		2,535
44201725	CLASS D PATCHES, TYPE I, 7 INCH	SQ YD	15	15	
44201729	CLASS D PATCHES, TYPE II, 7 INCH	SQ YD	20	20	

* SPECIALTY ITEM

FILE NAME - 21R0338-QUAN-01 - QTY02	USER NAME -	DESIGNED -- MW	REVISED --	STATE OF ILLINOIS DEPARTMENT OF TRANSPORTATION	207TH STREET ROADWAY RESURFACING CICERO AVENUE TO PULASKI ROAD SUMMARY OF QUANTITIES			F.A.I. RTE. 5270	SECTION 21-00067-00-RS	COUNTY COOK	TOTAL SHEETS 24	SHEET NO. 4
	PLOT SCALE -	CHECKED -- WD	REVISED --		SCALE: NONE	SHEET NO. 4	OF 24 SHEETS	STA.	TO STA.	FED. ROAD DIST. NO. 1	ILLINOIS	FED. AID PROJECT L612(866)
	PLOT DATE - 12-05-24	DRAWN -- MD	REVISED --									
		CHECKED -- AG	REVISED --									

CODE NO.	PAY ITEM	UNIT	TOTAL QUANTITY	FED 80%	FED 80%
				VILLAGE 20%	VILLAGE 20%
				ROADWAY	SAFETY
CONSTRUCTION TYPE CODE					
				0005	0021
44201733	CLASS D PATCHES, TYPE III, 7 INCH	SQ YD	25	25	
44201735	CLASS D PATCHES, TYPE IV, 7 INCH	SQ YD	200	200	
60608562	COMBINATION CONCRETE CURB AND GUTTER, TYPE M-4.12	FOOT	4,890	4,890	
67100100	MOBILIZATION	L SUM	1	1	
70102620	TRAFFIC CONTROL AND PROTECTION, STANDARD 701501	L SUM	1	1	
70102635	TRAFFIC CONTROL AND PROTECTION, STANDARD 701701	L SUM	1	1	
70102640	TRAFFIC CONTROL AND PROTECTION, STANDARD 701801	L SUM	1	1	
70300100	SHORT TERM PAVEMENT MARKING	FOOT	470		470
70300150	SHORT TERM PAVEMENT MARKING REMOVAL	SQ FT	160		160
* 72000100	SIGN PANEL - TYPE 1	SQ FT	158		158
72400100	REMOVE SIGN PANEL ASSEMBLY - TYPE A	EACH	20		20
* 72900100	METAL POST - TYPE A	FOOT	292		292
* 78000100	THERMOPLASTIC PAVEMENT MARKING - LETTERS AND SYMBOLS	SQ FT	140		140
* 78000200	THERMOPLASTIC PAVEMENT MARKING - LINE 4"	FOOT	4,000		4,000
* 78000400	THERMOPLASTIC PAVEMENT MARKING - LINE 6"	FOOT	920		920

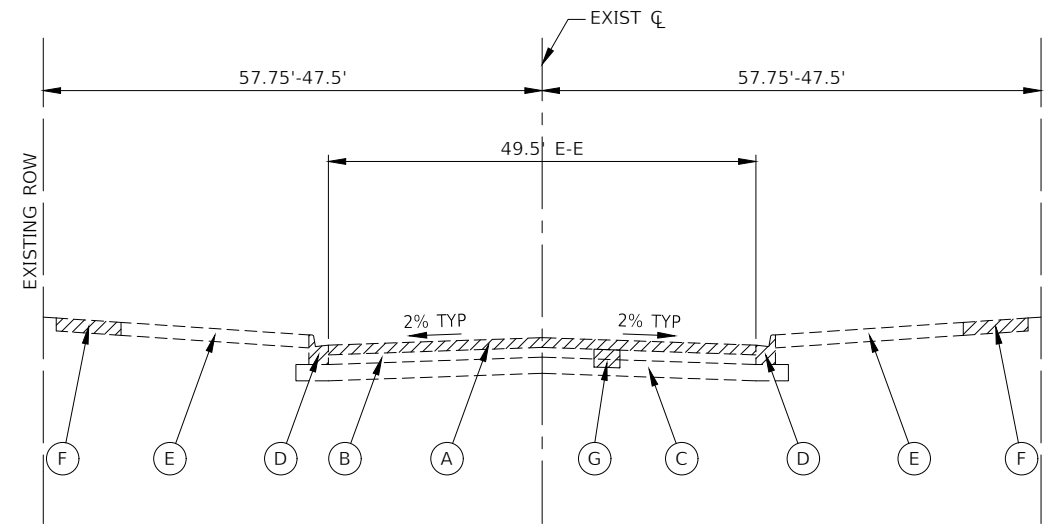
* SPECIALTY ITEM

FILE NAME - 21R0338-QUAN-01 - QTY03	USER NAME -	DESIGNED - MW	REVISED -	STATE OF ILLINOIS DEPARTMENT OF TRANSPORTATION	207TH STREET ROADWAY RESURFACING CICERO AVENUE TO PULASKI ROAD SUMMARY OF QUANTITIES			F.A.U. RTE. 5270	SECTION 21-00087-00-RS	COUNTY COOK	TOTAL SHEETS 24	SHEET NO. 5
	PLOT SCALE -	CHECKED - WD	REVISED -		SCALE: NONE	SHEET NO. 5	OF 24 SHEETS	STA.	TO STA.	FED. ROAD DIST. NO. 1	ILLINOIS	FED. AID PROJECT L6L2(656)
	PLOT DATE - 12-05-24	DRAWN - MD	REVISED -									
		CHECKED - AG	REVISED -									

CODE NO.	PAY ITEM	UNIT	TOTAL QUANTITY	FED 80%	FED 80%
				VILLAGE 20%	VILLAGE 20%
				ROADWAY	SAFETY
				CONSTRUCTION TYPE CODE	
				0005	0021
* 78000600	THERMOPLASTIC PAVEMENT MARKING - LINE 12"	FOOT	125		125
* 78000650	THERMOPLASTIC PAVEMENT MARKING - LINE 24"	FOOT	265		265
* 78100100	RAISED REFLECTIVE PAVEMENT MARKER	EACH	34		34
78300200	RAISED REFLECTIVE PAVEMENT MARKER REMOVAL	EACH	16		16
K1004595	PRUNING FOR SAFETY AND EQUIPMENT CLEARANCE	L SUM	1		1
* X8860105	DETECTOR LOOP REPLACEMENT	FOOT	170		170
Z0004514	HOT-MIX ASPHALT DRIVEWAY PAVEMENT, 4"	SQ YD	150	150	
Z0017400	DRAINAGE & UTILITY STRUCTURES TO BE ADJUSTED	EACH	36	36	
Z0017700	DRAINAGE & UTILITY STRUCTURES TO BE RECONSTRUCTED	EACH	2	2	
Z0030850	TEMPORARY INFORMATION SIGNING	SQ FT	52		52

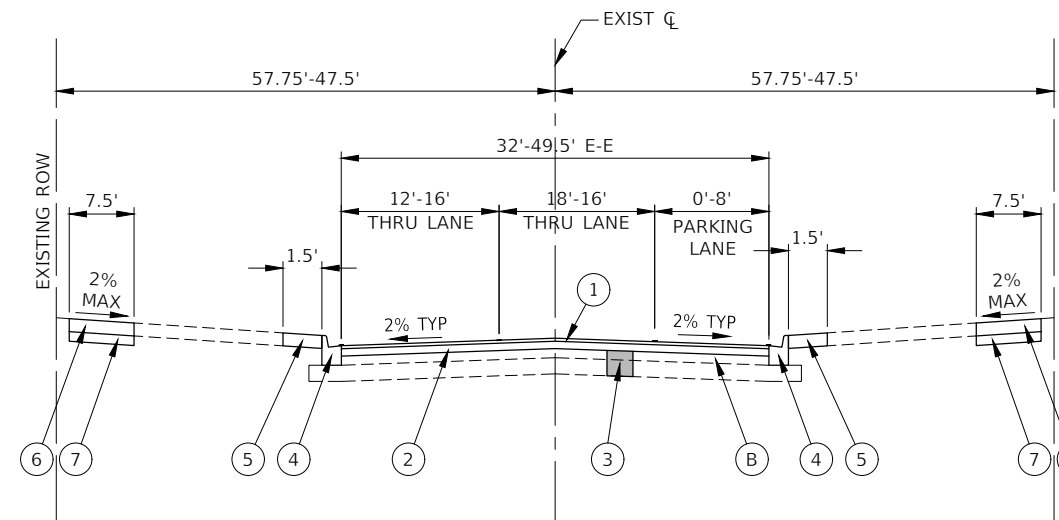
* SPECIALTY ITEM

FILE NAME = 21R0335-QUAN01 - QTY04	USER NAME =	DESIGNED -- MW	REVISED --	STATE OF ILLINOIS DEPARTMENT OF TRANSPORTATION	207TH STREET ROADWAY RESURFACING CICERO AVENUE TO PULASKI ROAD SUMMARY OF QUANTITIES	F.A.U. RTE.	SECTION	COUNTY	TOTAL SHEETS	SHEET NO.	
	PLOT SCALE =	CHECKED -- WD	REVISED --			5270	21-00067-00-RS	COOK	24	5	
	PLOT DATE = 12-05-24	DRAWN -- MD	REVISED --			CONTRACT NO. 61L15					
		CHECKED -- AG	REVISED --			SCALE: NONE	SHEET NO. 6 OF 24 SHEETS	STA.	TO STA.	FED. ROAD DIST. NO. 1	ILLINOIS



EXISTING TYPICAL SECTION

STA 25+05.61 TO STA 66+35.16
STA 68+85.16 TO STA 76+87.07



PROPOSED TYPICAL SECTION

STA 25+05.61 TO STA 66+35.16
STA 68+85.16 TO STA 76+87.07

NOTE

- LONGITUDINAL JOINT SEALANT SHALL BE PLACED ON THE HOT-MIX ASPHALT BINDER COURSE, IL-19.0, N50
- ALL PATCHING OPERATIONS SHALL TAKE PLACE AFTER SURFACE MILLING HAS BEEN COMPLETED.
- SEE PAVEMENT MARKING PLANS FOR LEFT TURN CONFIGURATIONS AT EAST AND WEST PROJECT LIMITS.

EXISTING LEGEND

- (A) HOT-MIX ASPHALT SURFACE REMOVAL, 3-3/4"
- (B) EXISTING HOT-MIX ASPHALT PAVEMENT, 3-1/4"-11"
- (C) AGGREGATE SUBGRADE, 0"-8"
- (D) EXISTING COMBINATION CURB AND GUTTER
- (E) EXISTING PARKWAY (HMA/PCC DRIVEWAYS OR GRASS)
- (F) SIDEWALK REMOVAL (AS DIRECTED BY THE ENGINEER)
- (G) PAVEMENT REMOVAL FOR CLASS D PATCHES, 7 INCH (AS DIRECTED BY THE ENGINEER)
- ITEMS TO BE REMOVED (AS DIRECTED BY THE ENGINEER)

PROPOSED LEGEND

- (1) HOT-MIX ASPHALT SURFACE COURSE, IL-9.5, MIX "D", N50, 1-1/2"
- (2) HOT-MIX ASPHALT BINDER COURSE, IL-19.0, N50, 2-1/2"
- (3) CLASS D PATCHES, 7 INCH (AS DIRECTED BY THE ENGINEER)
- (4) CONCRETE CURB & GUTTER, TYPE M-4.12 (AS DIRECTED BY THE ENGINEER)
- RESTORATION PER PARKWAY COMPOSITION (AS DIRECTED BY THE ENGINEER)
- (5) -HOT-MIX ASPHALT DRIVEWAY PAVEMENT, 4"
-PORTLAND CEMENT CONCRETE DRIVEWAY PAVEMENT, 7 INCH
-SODDING, SALT TOLERANT AND TOPSOIL FURNISH AND PLACE, 4"
- (6) PORTLAND CEMENT CONCRETE SIDEWALK, 5 INCH (AS DIRECTED BY THE ENGINEER)
- (7) AGGREGATE BASE COURSE, TYPE B 4" (AS DIRECTED BY THE ENGINEER)

HOT-MIX ASPHALT MIXTURE REQUIREMENTS

MIXTURE TYPE	AIR VOIDS @ Ndes	QMP
PAVEMENT RESURFACING		
HOT-MIX ASPHALT SURFACE COURSE, IL-9.5, MIX "D", N50, 1-1/2"	4% @ 50 Gyr.	LR 1030-2
HOT-MIX ASPHALT BINDER COURSE, IL-19.0, N50, 2-1/2"	4% @ 50 Gyr.	LR 1030-2
HOT-MIX ASPHALT DRIVEWAY PAVEMENT, 4"		
HOT-MIX ASPHALT SURFACE COURSE, IL-9.5, MIX "D", N50, 1-1/2"	4% @ 50 Gyr.	LR 1030-2
HOT-MIX ASPHALT BINDER COURSE, IL-19.0, N50, 2-1/2"	4% @ 50 Gyr.	LR 1030-2
PATCHING		
CLASS D PATCHES, (HMA BINDER IL-19mm), 7"	4% @ 70 Gyr.	LR 1030-2
QMP DESIGNATION: QUALITY CONTROL / QUALITY ASSURANCE (QC / QA) PER LR1030-2		

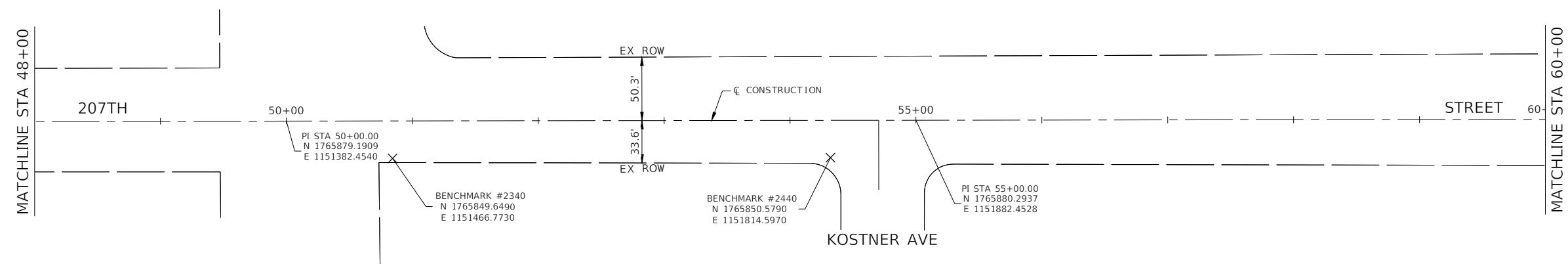
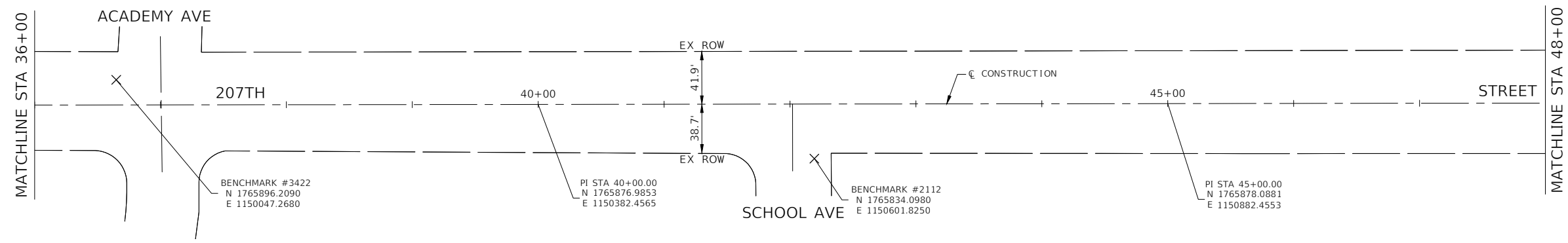
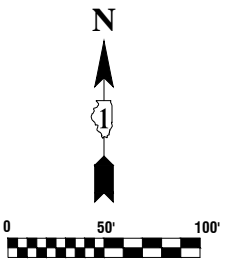
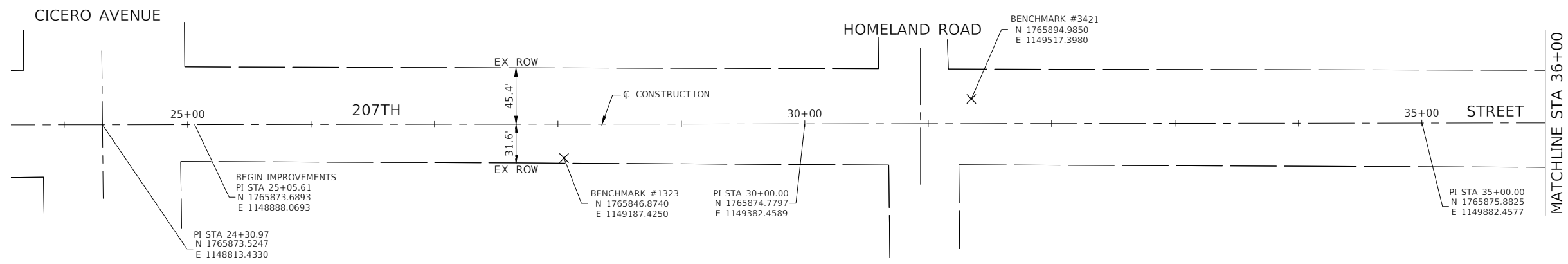
- THE UNIT WEIGHT USED TO CALCULATE ALL HMA SURFACE MIXTURE QUANTITIES IS 112 LBS/SY/IN.
- THE "AC-TYPE" FOR POLYMERIZED HMA MIXES SHALL BE "SBS/SBR PG 76-22" AND FOR NON-POLYMERIZED HMA THE "AC TYPE" SHALL BE "PG 64-22" UNLESS MODIFIED BY RECLAIMED MATERIALS SPECIFICATIONS.

FILE NAME = 21R0338-TYPX-01 - P01

USER NAME =	DESIGNED - MW	REVISED -
	CHECKED - WD	REVISED -
PLOT SCALE =	DRAWN - RG	REVISED -
PLOT DATE = 12-05-24	CHECKED - AG	REVISED -

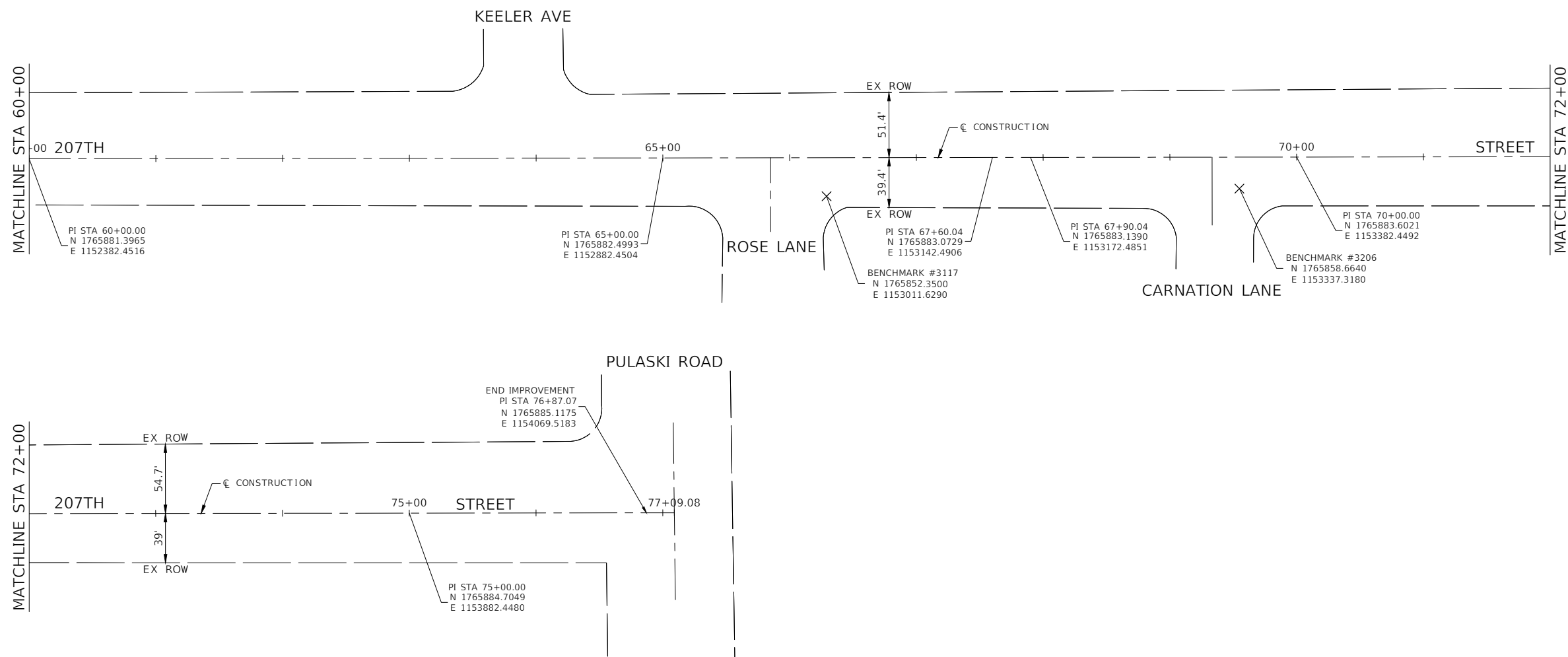
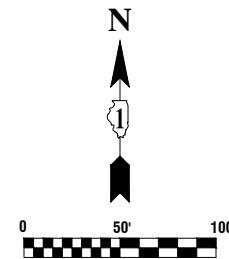
STATE OF ILLINOIS
DEPARTMENT OF TRANSPORTATION

207TH STREET ROADWAY RESURFACING CICERO AVENUE TO PULASKI ROAD TYPICAL CROSS SECTIONS				F.A.U. RTE.	SECTION	COUNTY	TOTAL SHEETS	SHEET NO.			
SCALE: NONE				SHEET NO. 7	OF 24 SHEETS	STA. TO STA.	5270	21-00067-00-RS	COOK	24	7
				CONTRACT NO. 61L15				FED. ROAD DIST. NO. 1 ILLINOIS FED. AID PROJECT L6L2(866)			



- NOTES**
- COORDINATES ARE BASED ON ILLINOIS STATE PLANE EASTERN ZONE NORTH AMERICAN DATUM 1983.
 - SURVEY FEET UNITS WERE USED.
 - ALL ELEVATIONS REFER TO NAVD88 DATUM.

FILE NAME = 21R0338-TIES-01 - IDOT P01	USER NAME =	DESIGNED -- MW	REVISED --	STATE OF ILLINOIS DEPARTMENT OF TRANSPORTATION	207TH STREET ROADWAY RESURFACING CICERO AVENUE TO PULASKI ROAD ALIGNMENT AND TIES			F.A.U. RTE.	SECTION	COUNTY	TOTAL SHEETS	SHEET NO.
	PLOT SCALE =	DRAWN -- MED	REVISED --		SCALE: 1"=50'	SHEET NO. 8	OF 24 SHEETS	STA.	TO STA.	21-00067-00-RS	COOK	24
	PLOT DATE = 12-05-24	CHECKED -- AG	REVISED --					CONTRACT NO. 61L15		FED. ROAD DIST. NO. 1 ILLINOIS FED. AID PROJECT L6L2(866)		



NOTES

1. COORDINATES ARE BASED ON ILLINOIS STATE PLANE EASTERN ZONE NORTH AMERICAN DATUM 1983.
2. SURVEY FEET UNITS WERE USED.
3. ALL ELEVATIONS REFER TO NAVD88 DATUM.

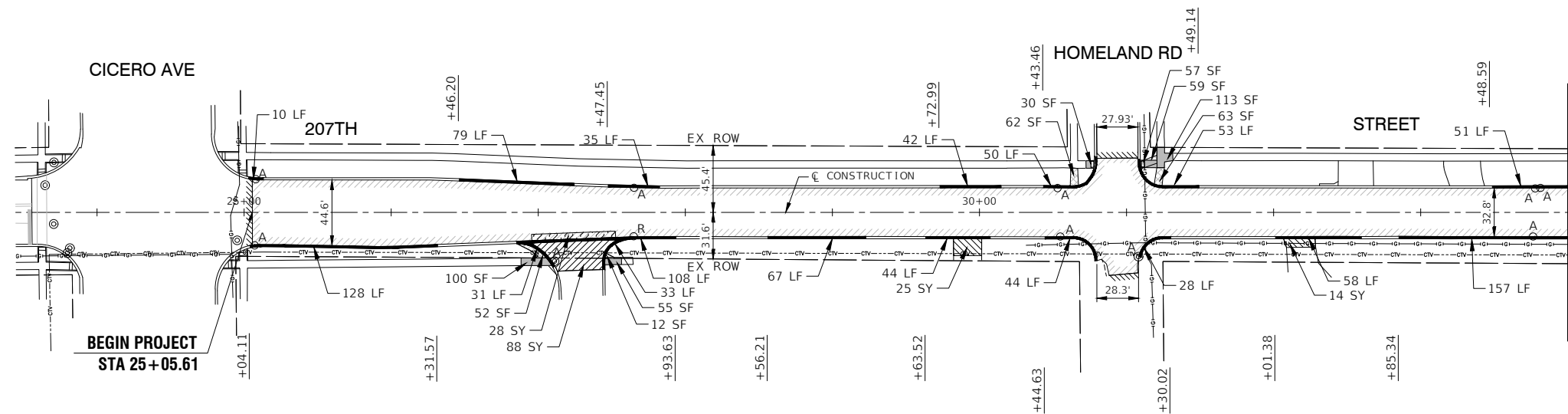
FILE NAME = 21R0338-TIES-01 - IDOT P02	USER NAME =	DESIGNED -- MW	REVISED --
		CHECKED -- WD	REVISED --
	PLOT SCALE =	DRAWN -- MED	REVISED --
	PLOT DATE = 12-05-24	CHECKED -- AG	REVISED --

**STATE OF ILLINOIS
DEPARTMENT OF TRANSPORTATION**

**207TH STREET ROADWAY RESURFACING
CICERO AVENUE TO PULASKI ROAD
ALIGNMENT AND TIES**

SCALE: 1"=50' SHEET NO. 9 OF 24 SHEETS STA. TO STA.

F.A.U. RTE.	SECTION	COUNTY	TOTAL SHEETS	SHEET NO.
5270	21-00067-00-RS	COOK	24	9
CONTRACT NO. 61L15				
FED. ROAD DIST. NO. 1 ILLINOIS FED. AID PROJECT L6L2(866)				



LEGEND

- HMA SURFACE REMOVAL, 3 3/4"
- HOT-MIX ASPHALT BINDER COURSE IL-19.0, N50, 2 1/2"
- HOT-MIX ASPHALT SURFACE COURSE, IL-9.5, MIX "D", N50, 1 1/2"
- SIDEWALK REMOVAL
- SIDEWALK REMOVAL
PORTLAND CEMENT CONCRETE SIDEWALK, 5" (7" THRU DRIVEWAYS)
AGGREGATE BASE COURSE, TYPE B, 4"
- CLASS D PATCHES, 7 INCH
REMOVAL OF UNSUITABLE MATERIAL (AS DIRECTED BY ENGINEER)
AGGREGATE SUBGRADE IMPROVEMENT (AS DIRECTED BY ENGINEER)
- DRIVEWAY PAVEMENT REMOVAL
HOT-MIX ASPHALT DRIVEWAY PAVEMENT, 4"
- DRIVEWAY PAVEMENT REMOVAL
PORTLAND CEMENT CONCRETE DRIVEWAY PAVEMENT, 7"
- HOT-MIX ASPHALT SURFACE REMOVAL - BUTT JOINT
- COMBINATION CURB AND GUTTER REMOVAL
COMBINATION CONCRETE CURB AND GUTTER, TYPE M-4.12
- DETECTABLE WARNING
- "A" DRAINAGE & UTILITY STRUCTURES TO BE ADJUSTED
- "R" DRAINAGE & UTILITY STRUCTURES TO BE RECONSTRUCTED

NOTES:

ALL SIDEWALK RAMP SHALL BE IN ACCORDANCE WITH THE HIGHWAY STANDARDS REFERENCED ON SHEET 2.

AREAS WHERE SIDEWALK IS TO BE REMOVED AND NOT REPLACED SHALL BE REPLACED WITH "TOPSOIL FURNISH AND PLACE, 4" AND "SODDING, SALT TOLERANT" UNLESS OTHERWISE NOTED.

DRIVEWAY REMOVAL AND REPLACEMENT SHALL BE COMPLETED AS DIRECTED BY THE ENGINEER.

CLASS D PATCHES, 7 INCH SHALL BE COMPLETED BY THE ENGINEER.

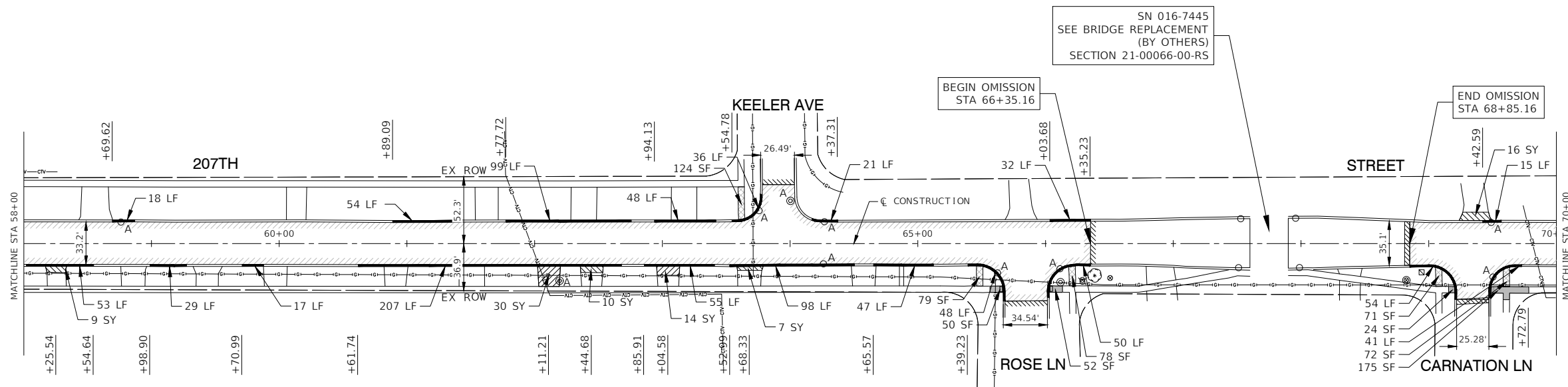
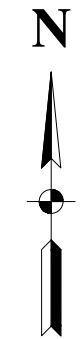
FILE NAME = 21R0338-PLAN-01 - P01	USER NAME =	DESIGNED - MW	REVISED -
		CHECKED - WD	REVISED -
	PLOT SCALE =	DRAWN - RG	REVISED -
	PLOT DATE = 12-05-24	CHECKED - AG	REVISED -

**STATE OF ILLINOIS
DEPARTMENT OF TRANSPORTATION**

**207TH STREET ROADWAY RESURFACING
CICERO AVENUE TO PULASKI ROAD
PROPOSED IMPROVEMENT PLAN**

SCALE: 1"=50' SHEET NO. 10 OF 24 SHEETS STA. TO STA.

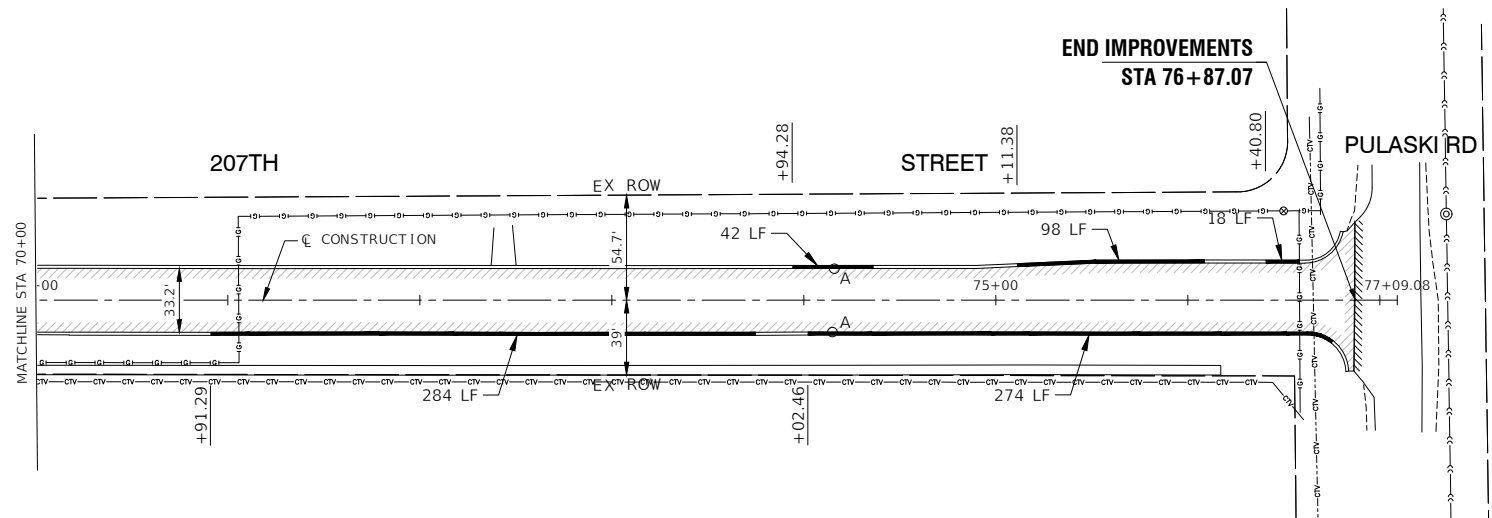
F.A.U. RTE.	SECTION	COUNTY	TOTAL SHEETS	SHEET NO.
5270	21-00067-00-RS	COOK	24	10
CONTRACT NO. 61L15				
FED. ROAD DIST. NO. 1	ILLINOIS	FED. AID PROJECT	L6L2(866)	



SN 016-7445
SEE BRIDGE REPLACEMENT
(BY OTHERS)
SECTION 21-00066-00-RS

BEGIN OMISSION
STA 66+35.16

END OMISSION
STA 68+85.16



END IMPROVEMENTS
STA 76+87.07

LEGEND

- HMA SURFACE REMOVAL, 3 3/4"
- HOT-MIX ASPHALT BINDER COURSE IL-19.0, N50, 2 1/2"
- HOT-MIX ASPHALT SURFACE COURSE, IL-9.5, MIX "D", N50, 1 1/2"
- SIDEWALK REMOVAL
- SIDEWALK REMOVAL
PORTLAND CEMENT CONCRETE SIDEWALK, 5" (7" THRU DRIVEWAYS)
AGGREGATE BASE COURSE, TYPE B, 4"
- CLASS D PATCHES, 7 INCH
REMOVAL OF UNSUITABLE MATERIAL (AS DIRECTED BY ENGINEER)
AGGREGATE SUBGRADE IMPROVEMENT (AS DIRECTED BY ENGINEER)
- DRIVEWAY PAVEMENT REMOVAL
HOT-MIX ASPHALT DRIVEWAY PAVEMENT, 4"
- DRIVEWAY PAVEMENT REMOVAL
PORTLAND CEMENT CONCRETE DRIVEWAY PAVEMENT, 7"
- HOT-MIX ASPHALT SURFACE REMOVAL - BUTT JOINT
- COMBINATION CURB AND GUTTER REMOVAL
COMBINATION CONCRETE CURB AND GUTTER, TYPE M-4.12
- DETECTABLE WARNING
- "A" DRAINAGE & UTILITY STRUCTURES TO BE ADJUSTED
- "R" DRAINAGE & UTILITY STRUCTURES TO BE RECONSTRUCTED

NOTES:

ALL SIDEWALK RAMP SHALL BE IN ACCORDANCE WITH THE HIGHWAY STANDARDS REFERENCED ON SHEET 2.

AREAS WHERE SIDEWALK IS TO BE REMOVED AND NOT REPLACED SHALL BE REPLACED WITH "TOPSOIL FURNISH AND PLACE, 4" AND "SODDING, SALT TOLERANT" UNLESS OTHERWISE NOTED.

DRIVEWAY REMOVAL AND REPLACEMENT SHALL BE COMPLETED AS DIRECTED BY THE ENGINEER.

CLASS D PATCHES, 7 INCH SHALL BE COMPLETED AS DIRECTED BY THE ENGINEER.

FILE NAME = 21R0338-PLAN-01 - P03

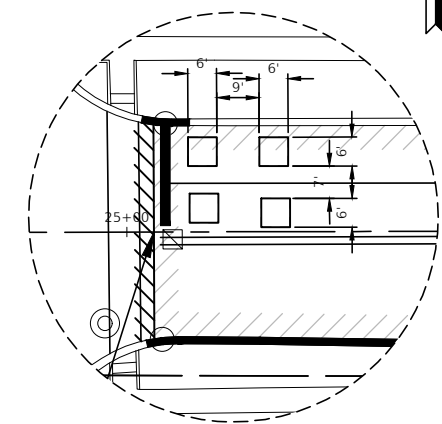
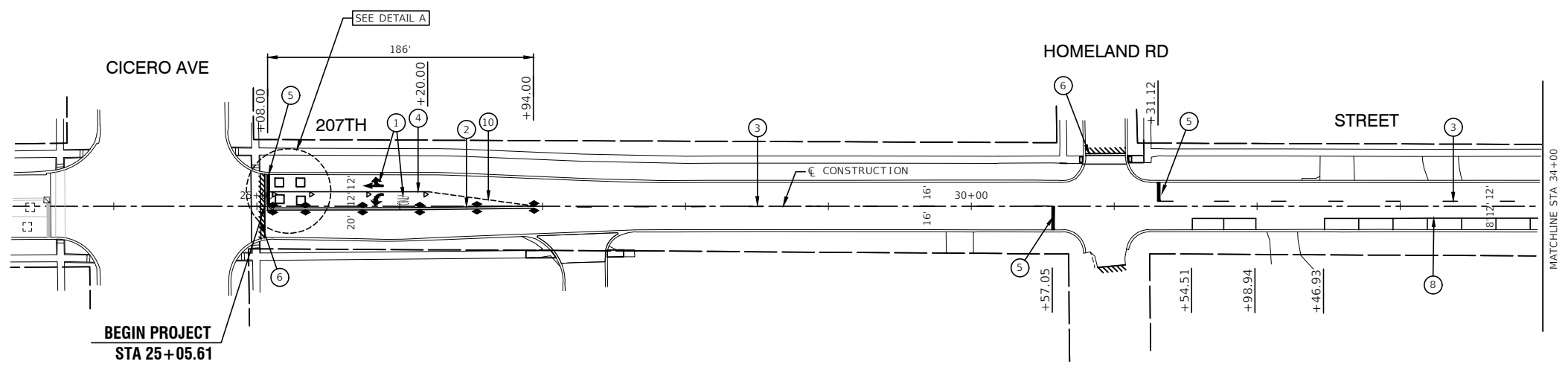
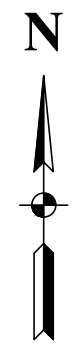
USER NAME =	DESIGNED - MW	REVISED -
	CHECKED - WD	REVISED -
PLOT SCALE =	DRAWN - RG	REVISED -
PLOT DATE = 12-05-24	CHECKED - AG	REVISED -

STATE OF ILLINOIS
DEPARTMENT OF TRANSPORTATION

207TH STREET ROADWAY RESURFACING
CICERO AVENUE TO PULASKI ROAD
PROPOSED IMPROVEMENT PLAN

SCALE: 1"=50' SHEET NO. 12 OF 24 SHEETS STA. TO STA.

F.A.U. RTE.	SECTION	COUNTY	TOTAL SHEETS	SHEET NO.
5270	21-00067-00-RS	COOK	24	12
CONTRACT NO. 61L15				
FED. ROAD DIST. NO. 1 ILLINOIS FED. AID PROJECT L6L2(866)				



PAVEMENT MARKING LEGEND

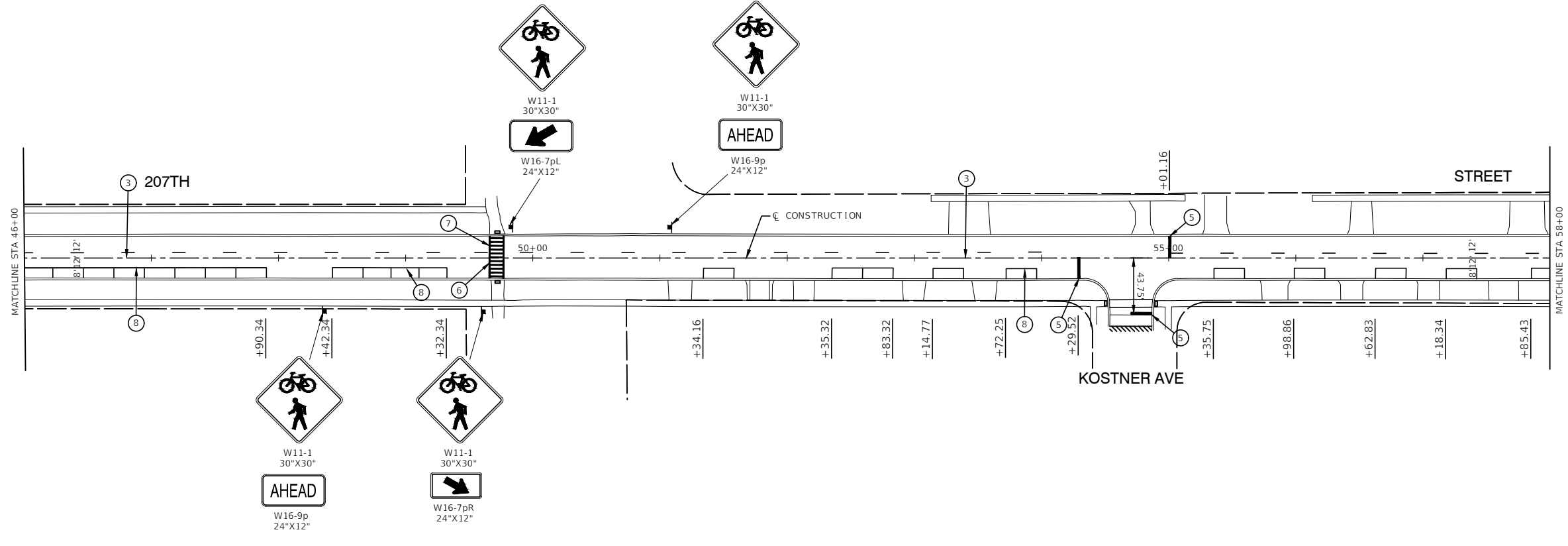
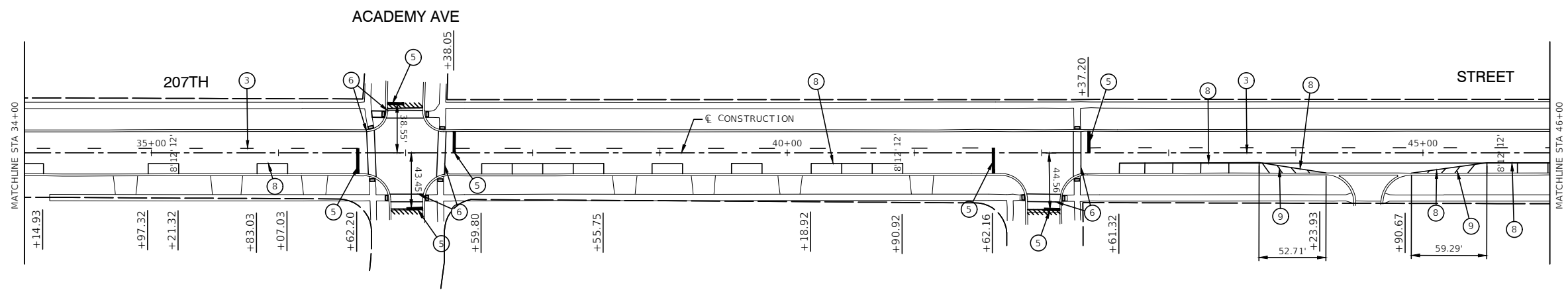
- ① THERMOPLASTIC PAVEMENT MARKING - WHITE LETTERS & SYMBOLS
- ② THERMOPLASTIC PAVEMENT MARKING - LINE 4" DOUBLE YELLOW LINE (11" C-C)
- ③ THERMOPLASTIC PAVEMENT MARKING - LINE 4" YELLOW SKIP DASH (10' LINE - 30' SPACE)
- ④ THERMOPLASTIC PAVEMENT MARKING - LINE 6" WHITE LANE LINE
- ⑤ THERMOPLASTIC PAVEMENT MARKING - LINE 24" WHITE STOP BAR LINE
- ⑥ THERMOPLASTIC PAVEMENT MARKING - LINE 6" WHITE CROSS-WALK (6' C-C OR AS DIMENSIONED)
- ⑦ THERMOPLASTIC PAVEMENT MARKING - LINE 12" WHITE CROSS-WALK (3' C-C)
- ⑧ THERMOPLASTIC PAVEMENT MARKING - LINE 4" WHITE LANE LINE
- ⑨ THERMOPLASTIC PAVEMENT MARKING - LINE 4" WHITE LINE DIAGONAL EQUAL SPACED
- ⑩ THERMOPLASTIC PAVEMENT MARKING - LINE 6" WHITE SKIP DASH (2' LINE - 6' SPACE)
- ▲ TRAFFIC SIGN
- EXISTING DETECTOR LOOP
- DETECTOR LOOP REPLACEMENT

RAISED REFLECTIVE PAVEMENT MARKER

- ▲ ONE-WAY CRYSTAL MARKER
40' C/C UNLESS OTHERWISE INDICATED
- ◆ TWO-WAY AMBER MARKER
40' C/C UNLESS OTHERWISE INDICATED

NOTES

1. SEE TC-13 DISTRICT ONE TYPICAL PAVEMENT MARKING FOR GUIDANCE.
2. ALL PAVEMENT MARKINGS SHALL BE THERMOPLASTIC UNLESS OTHERWISE SHOWN.
3. SEE TC-11 DISTRICT ONE DETAIL FOR RAISED REFLECTIVE PAVEMENT GUIDANCE.



FILE NAME = 21R0338-PLAN-01 - PMKG_01

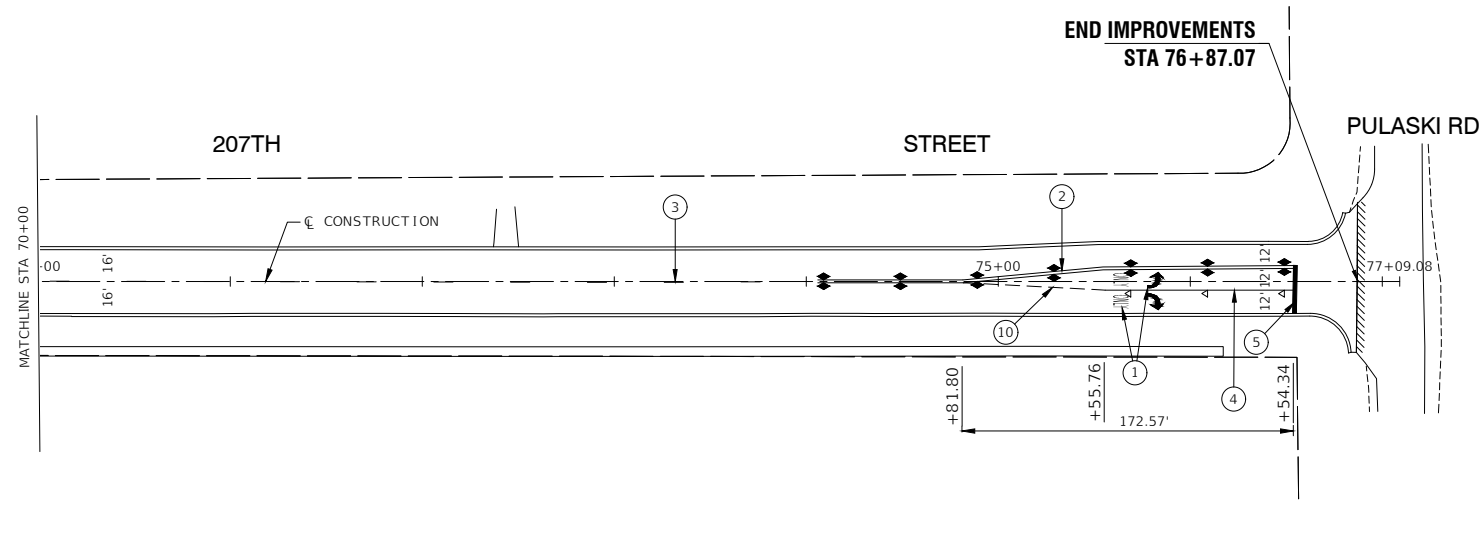
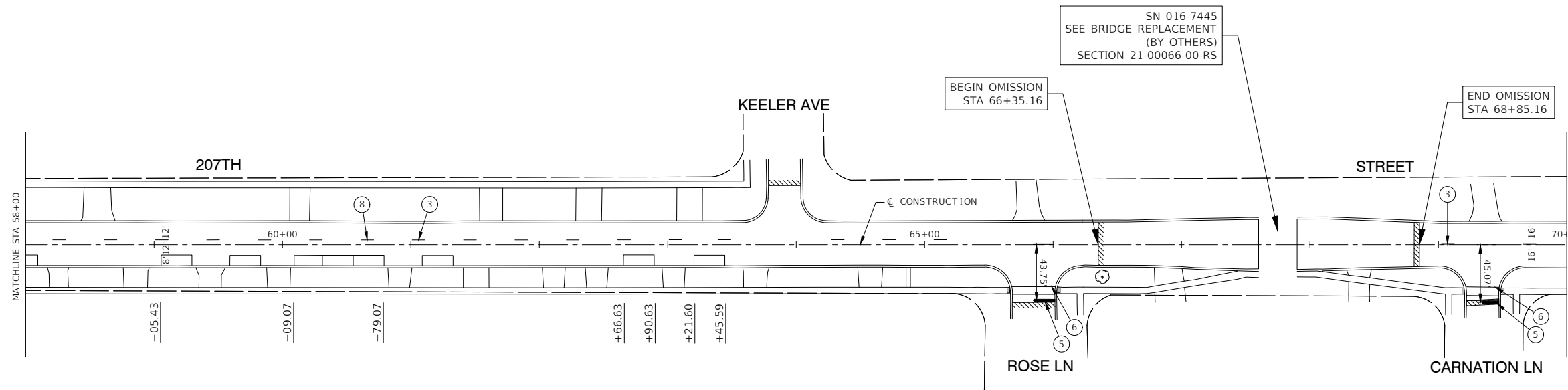
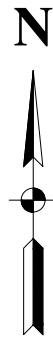
USER NAME =	DESIGNED - MW	REVISED -
	CHECKED - WD	REVISED -
PLOT SCALE =	DRAWN - RG	REVISED -
PLOT DATE = 12-05-24	CHECKED - AG	REVISED -

STATE OF ILLINOIS
DEPARTMENT OF TRANSPORTATION

207TH STREET ROADWAY RESURFACING
CICERO AVENUE TO PULASKI ROAD
PAVEMENT MARKING AND SIGNAGE

SCALE: 1"=50' SHEET NO. 13 OF 24 SHEETS STA. TO STA.

F.A.U. RTE.	SECTION	COUNTY	TOTAL SHEETS	SHEET NO.
5270	21-00067-00-RS	COOK	24	13
CONTRACT NO. 61L15				
FED. ROAD DIST. NO. 1	ILLINOIS	FED. AID PROJECT	L6L2(866)	



PAVEMENT MARKING LEGEND

- ① THERMOPLASTIC PAVEMENT MARKING - WHITE LETTERS & SYMBOLS
- ② THERMOPLASTIC PAVEMENT MARKING - LINE 4" DOUBLE YELLOW LINE (11" C-C)
- ③ THERMOPLASTIC PAVEMENT MARKING - LINE 4" YELLOW SKIP DASH (10' LINE - 30' SPACE)
- ④ THERMOPLASTIC PAVEMENT MARKING - LINE 6" WHITE LANE LINE
- ⑤ THERMOPLASTIC PAVEMENT MARKING - LINE 24" WHITE STOP BAR LINE
- ⑥ THERMOPLASTIC PAVEMENT MARKING - LINE 6" WHITE CROSS-WALK (6' C-C OR AS DIMENSIONED)
- ⑦ THERMOPLASTIC PAVEMENT MARKING - LINE 12" WHITE CROSS-WALK (3' C-C)
- ⑧ THERMOPLASTIC PAVEMENT MARKING - LINE 4" WHITE LANE LINE
- ⑨ THERMOPLASTIC PAVEMENT MARKING - LINE 4" WHITE LINE DIAGONAL EQUAL SPACED
- ⑩ THERMOPLASTIC PAVEMENT MARKING - LINE 6" WHITE SKIP DASH (2' LINE - 6' SPACE)
- TRAFFIC SIGN
- EXISTING DETECTOR LOOP
- DETECTOR LOOP REPLACEMENT

RAISED REFLECTIVE PAVEMENT MARKER

- ◀ ONE-WAY CRYSTAL MARKER
40' C/C UNLESS OTHERWISE INDICATED
- ◆ TWO-WAY AMBER MARKER
40' C/C UNLESS OTHERWISE INDICATED

NOTES

1. SEE TC-13 DISTRICT ONE TYPICAL PAVEMENT MARKING FOR GUIDANCE.
2. ALL PAVEMENT MARKINGS SHALL BE THERMOPLASTIC UNLESS OTHERWISE SHOWN.
3. SEE TC-11 DISTRICT ONE DETAIL FOR RAISED REFLECTIVE PAVEMENT GUIDANCE.

FILE NAME = 21R0338-PLAN-01 - PMKG_02	USER NAME =	DESIGNED - MW	REVISED -
		CHECKED - WD	REVISED -
	PLOT SCALE =	DRAWN - RG	REVISED -
	PLOT DATE = 12-05-24	CHECKED - AG	REVISED -

STATE OF ILLINOIS
DEPARTMENT OF TRANSPORTATION

207TH STREET ROADWAY RESURFACING
CICERO AVENUE TO PULASKI ROAD
PAVEMENT MARKING AND SIGNAGE

SCALE: 1"=50' SHEET NO. 14 OF 24 SHEETS STA. TO STA.

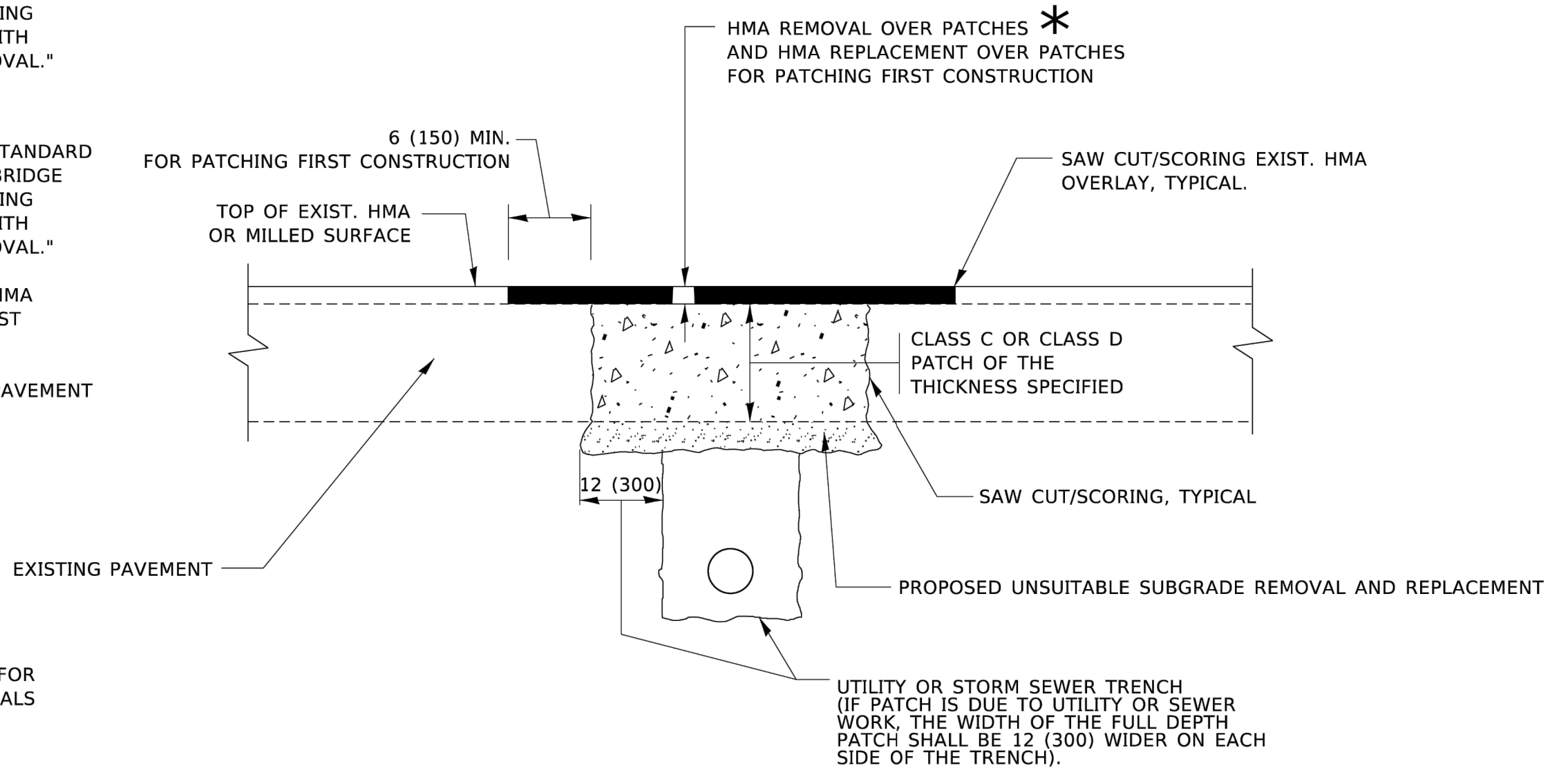
F.A.U. RTE.	SECTION	COUNTY	TOTAL SHEETS	SHEET NO.
5270	21-00067-00-RS	COOK	24	14
CONTRACT NO. 61L15				
FED. ROAD DIST. NO. 1 ILLINOIS FED. AID PROJECT L6L2(866)				

METHOD OF MEASUREMENT

REFER TO SECTION 442 OF THE STANDARD SPECIFICATIONS FOR ROAD AND BRIDGE CONSTRUCTION AND THE RECURRING SPECIAL PROVISION "PATCHING WITH HOT-MIX ASPHALT OVERLAY REMOVAL."

BASIS OF PAYMENT

1. REFER TO SECTION 442 OF THE STANDARD SPECIFICATIONS FOR ROAD AND BRIDGE CONSTRUCTION AND THE RECURRING SPECIAL PROVISION "PATCHING WITH HOT-MIX ASPHALT OVERLAY REMOVAL."
2. SAW CUT/SCORING OF EXISTING HMA OVERLAY IS INCLUDED IN THE COST OF PAVEMENT PATCHING.
3. SAW CUT/SCORING OF EXISTING PAVEMENT IS INCLUDED IN THE COST OF PAVEMENT PATCHING.



SEQUENCE OF CONSTRUCTION (PATCHING FIRST)

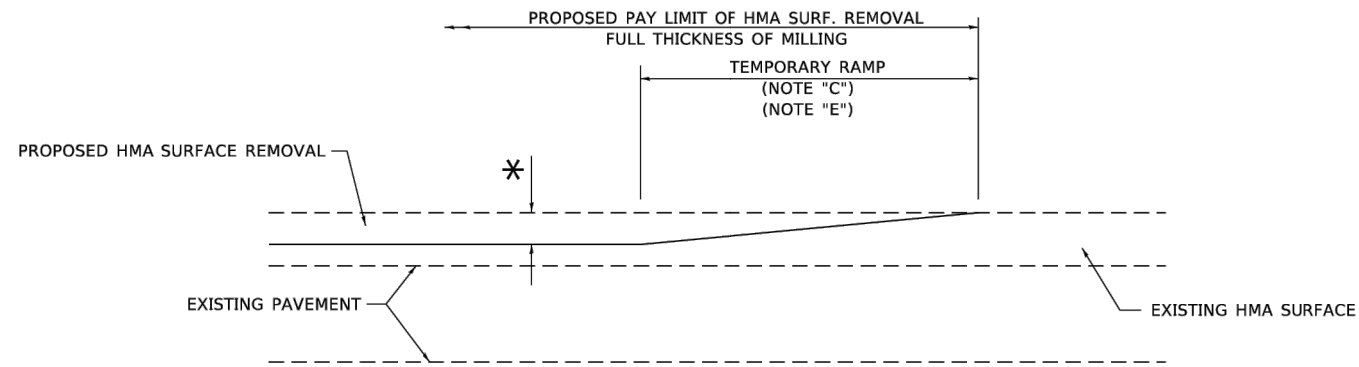
1. REMOVE THE EXISTING HMA MATERIAL OVER THE AREA TO BE PATCHED.
2. REMOVE AND REPLACE WITH CLASS C OR D PATCH.
3. REPLACE HMA MATERIAL OVER THE AREA TO BE PATCHED.

SEQUENCE OF CONSTRUCTION (MILLING FIRST)

1. MILL HMA FIRST IF THERE IS AT LEAST 4½ INCHES OR MORE OF HMA MATERIAL ON TOP OF THE EXISTING PAVEMENT OR IF THE PAVEMENT IS FULL DEPTH HMA. A MINIMUM OF 2 INCHES OF HMA MATERIAL SHALL BE IN PLACE AFTER MILLING.
2. REMOVE AND REPLACE WITH FULL DEPTH CLASS D PATCHES TO TOP OF MILLED SURFACE.

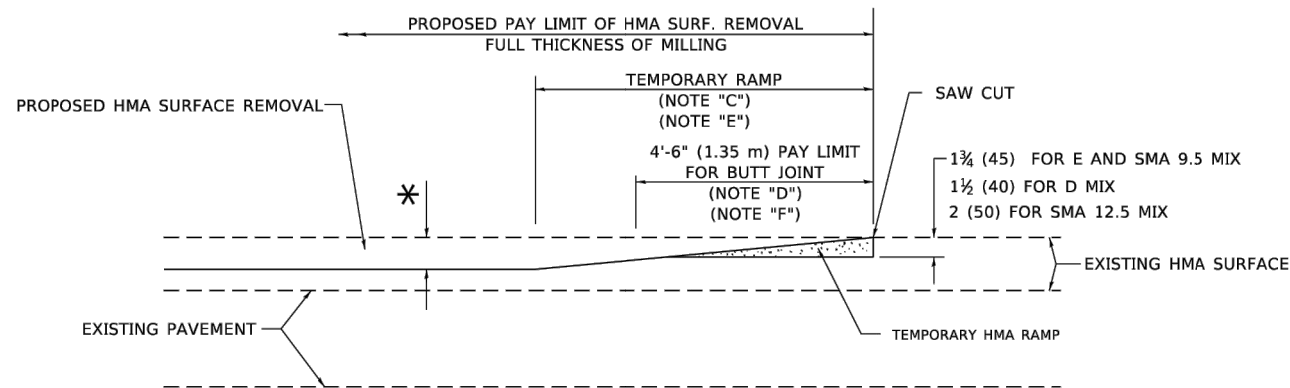
ALL DIMENSIONS ARE IN INCHES (MILLIMETERS) UNLESS OTHERWISE SHOWN.

FILE NAME = 21R0338-DTLS-01 - DTLS_02	USER NAME =	DESIGNED = MW	REVISED =	STATE OF ILLINOIS DEPARTMENT OF TRANSPORTATION	PAVEMENT PATCHING FOR HMA SURFACED PAVEMENT	F.A.U. RTE.	SECTION	COUNTY	TOTAL SHEETS	SHEET NO.	
		CHECKED = WD	REVISED =			5270	21-00067-00-RS	COOK	24	15	
	PLOT SCALE =	DRAWN = MED	REVISED =			BD400-04 (BD-22)		CONTRACT NO. 61L15			
	PLOT DATE = 12-05-24	CHECKED = AG	REVISED =			SCALE:		SHEET NO.15 OF 24 SHEETS		STA. TO STA.	



MILLED TEMPORARY RAMP
(FOR BUTT JOINT AND HMA TAPER SEE DETAIL BELOW)

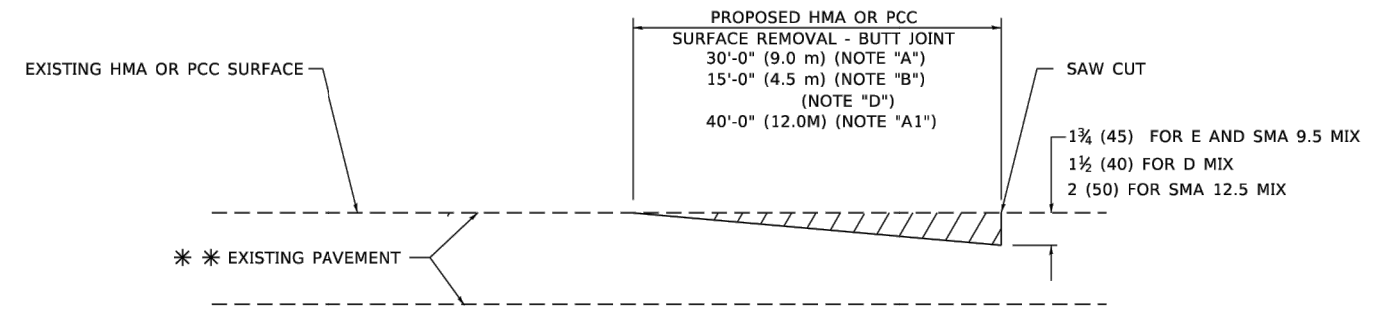
OPTION 1



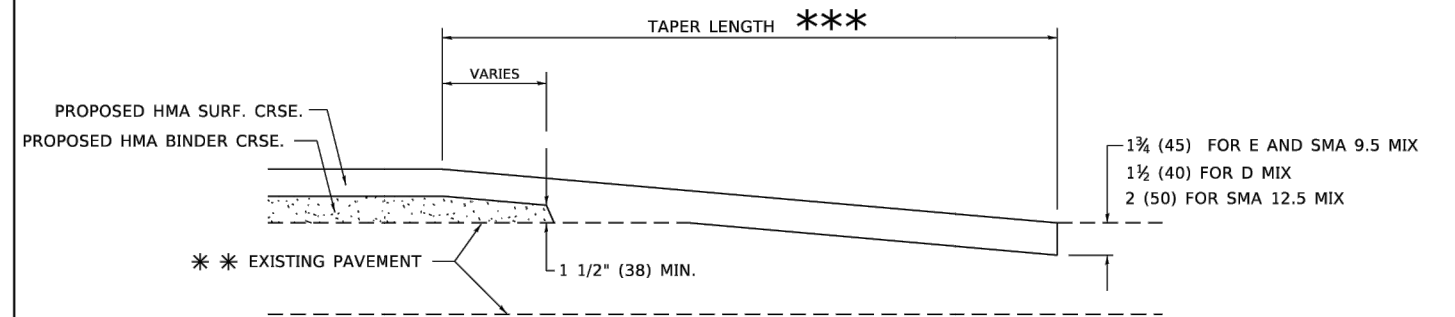
HMA CONSTRUCTED TEMPORARY RAMP
(FOR BUTT JOINT AND HMA TAPER SEE DETAIL BELOW)

OPTION 2

TYPICAL TEMPORARY RAMP



BUTT JOINT DETAIL



HMA TAPER DETAIL

TYPICAL BUTT JOINT AND HMA TAPER FOR RESURFACING ONLY

*** PC CONCRETE, HMA OR HMA RESURFACED PAVEMENT.

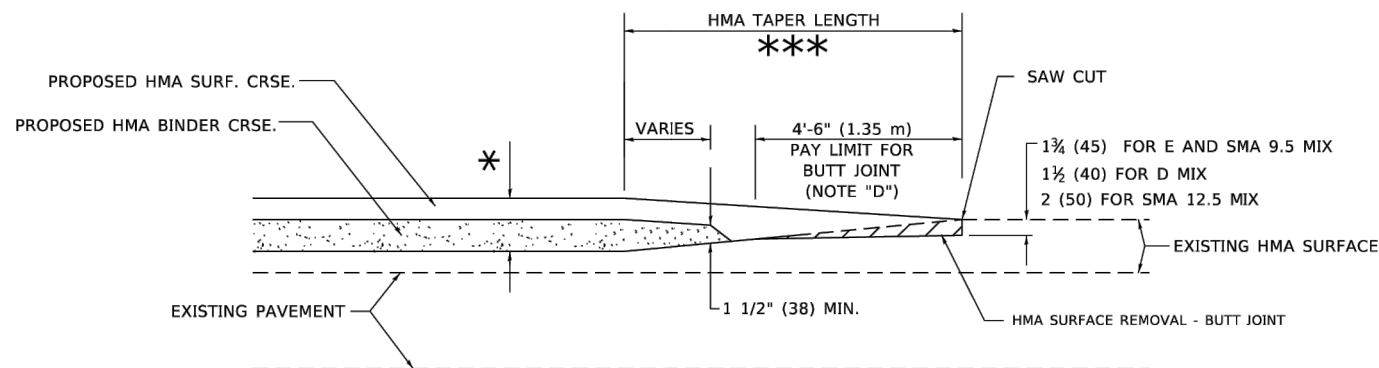
GENERAL NOTES

- A. MAINLINE ARTERIAL ROADWAYS AND MAJOR SIDE ROADS.
- A1. INTERSTATES
- B. MINOR SIDE ROADS.
- C. THE TEMP. RAMP SHALL BE CONSTRUCTED IMMEDIATELY UPON REMOVAL OF THE EXISTING HMA SURFACE.
- D. THE BUTT JOINT SHALL BE CONSTRUCTED IMMEDIATELY PRIOR TO PLACING THE PROPOSED HMA COURSES.
- E. TAPER THE TEMP. RAMP AT A RATE OF 3' - 4" (1.02m) PER 1 INCH (25 mm) OF MILLING THICKNESS.
* SEE TYPICAL SECTIONS FOR MILLING THICKNESS.
- F. SEE ARTICLE 406.08 AND 406.14 OF THE STANDARD SPECIFICATIONS FOR "HMA AND/OR PCC SURFACE REMOVAL, BUTT JOINT".
*** 20'-0" (6.1 m) PER 1 (25) RESURFACING (NOTE "A")
10'-0" (3.0 m) PER 1 (25) RESURFACING (NOTE "B")

BASIS OF PAYMENT

- 1. THE BUTT JOINT WILL BE PAID FOR AT THE CONTRACT UNIT PRICE PER SQUARE YARD (SQUARE METER) FOR "HOT-MIX ASPHALT SURFACE REMOVAL - BUTT JOINT" OR FOR "PORTLAND CEMENT CONCRETE SURFACE REMOVAL- BUTT JOINT".
- 2. THE TEMPORARY RAMP AND SAW CUT SHALL BE INCLUDED IN THE UNIT COST FOR HMA OR PCC SURFACE REMOVAL-BUTT JOINT.

ALL DIMENSIONS ARE IN INCHES (MILLIMETERS) UNLESS OTHERWISE SHOWN.



BUTT JOINT AND HMA TAPER

TYPICAL BUTT JOINT AND HMA TAPER FOR MILLING AND RESURFACING

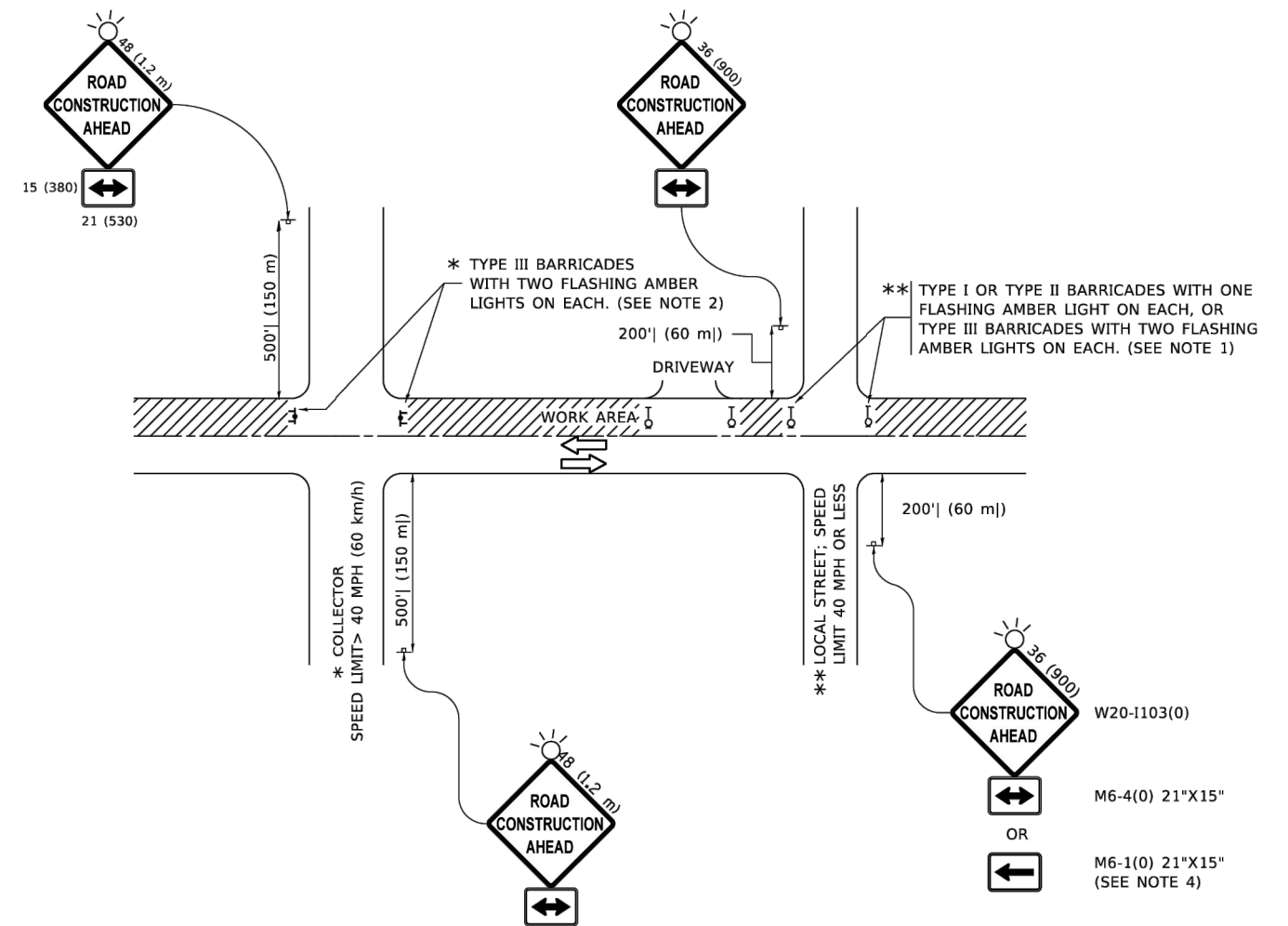
FILE NAME = 21R0338-DTLS-01 - DTLS_04	USER NAME =	DESIGNED = MW	REVISED =
		CHECKED = WD	REVISED =
	PLOT SCALE =	DRAWN = MED	REVISED =
	PLOT DATE = 12-05-24	CHECKED = AG	REVISED =

STATE OF ILLINOIS
DEPARTMENT OF TRANSPORTATION

BUTT JOINT AND HMA TAPER DETAILS

SCALE: SHEET NO.16 OF 24 SHEETS STA. TO STA.

F.A.U. RTE.	SECTION	COUNTY	TOTAL SHEETS	SHEET NO.
5270	21-00067-00-RS	COOK	24	16
BD400-05 BD-32		CONTRACT NO. 61L15		
FED. ROAD DIST. NO.1 ILLINOIS FED. AID PROJECT L6L2(866)				



NOTES:

1. SIDE ROAD WITH A SPEED LIMIT OF 40 MPH (60 km/h) OR LESS AS SHOWN ON THE DRAWING AND AS DIRECTED BY THE ENGINEER:
 - a) ONE "ROAD CONSTRUCTION AHEAD" SIGN 36 x 36 (900x900) WITH A FLASHER MOUNTED ON IT APPROXIMATELY 200' (60 m) IN ADVANCE OF THE MAIN ROUTE.
 - b) THE CLOSED PORTION OF THE MAIN ROUTE SHALL BE PROTECTED BY BLOCKING WITH TYPE I, TYPE II OR TYPE III BARRICADES, 1/3 OF THE CROSS SECTION OF THE CLOSED PORTION.
2. SIDE ROAD WITH A SPEED LIMIT GREATER THAN 40 MPH (60 km/h) AS SHOWN ON THE DRAWING AND AS DIRECTED BY THE ENGINEER:
 - a) ONE "ROAD CONSTRUCTION AHEAD" SIGN 48 x 48 (1.2 m x 1.2 m) WITH A FLASHER MOUNTED ON IT APPROXIMATELY 500' (150 m) IN ADVANCE OF THE MAIN ROUTE.
 - b) BLOCKING WITH TYPE III BARRICADES, 1/2 OF THE CROSS SECTION OF THE CLOSED PORTION.
3. CONES MAY BE SUBSTITUTED FOR BARRICADES OR DRUMS AT HALF THE SPACING DURING DAY OPERATIONS. CONES SHALL BE A MINIMUM OF 28 (710) IN HEIGHT.
4. SIGNING AND THE WORK ZONE, A SINGLE HEADED ARROW (M6-1) SHALL BE USED IN LIEU OF THE DOUBLE HEADED ARROW (M6-4).
5. WHEN WORK IS BEING PERFORMED ON A SIDE ROAD OR DRIVEWAY, FOLLOW THE APPLICABLE STANDARD(S). THE DIRECTIONAL ARROW (M6-1 OR M6-4) SHALL BE COVERED OR REMOVED WHEN NO LONGER CONSISTENT WITH THE TRAFFIC CONTROL SET-UP.
6. ADVANCE WARNING SIGNS ARE TO BE OMITTED ON DRIVEWAYS UNLESS OTHERWISE SPECIFIED IN THE PLANS OR BY THE ENGINEER.
7. THE TRAFFIC CONTROL AND PROTECTION FOR SIDE ROADS, INTERSECTIONS, AND DRIVEWAYS SHALL BE INCLUDED IN THE COST OF SPECIFIED TRAFFIC CONTROL STANDARDS OR ITEMS.

All dimensions are in inches (millimeters) unless otherwise shown.

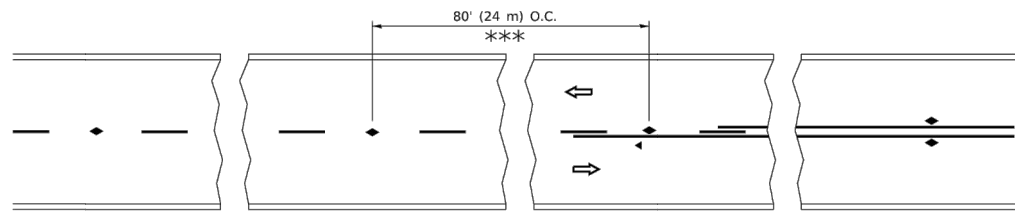
FILE NAME = 21R0338-DTLS-01 - DTLS_05	USER NAME =	DESIGNED = MW	REVISED =
		CHECKED = WD	REVISED =
	PLOT SCALE =	DRAWN = MED	REVISED =
	PLOT DATE = 12-05-24	CHECKED = AG	REVISED =

STATE OF ILLINOIS
DEPARTMENT OF TRANSPORTATION

TRAFFIC CONTROL AND PROTECTION FOR
SIDE ROADS, INTERSECTIONS, AND DRIVEWAYS

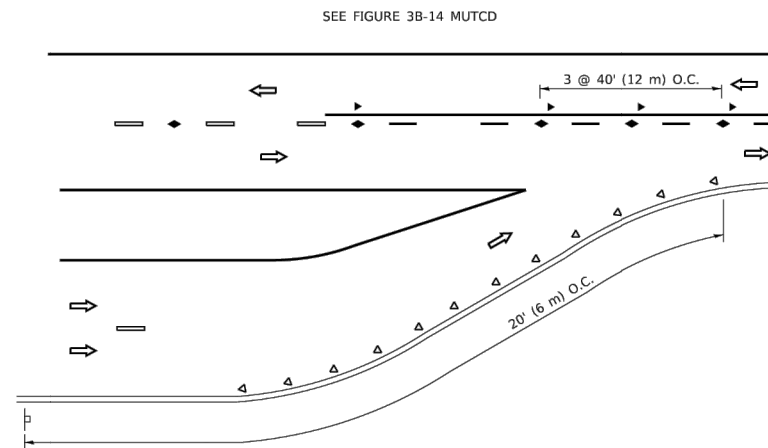
SCALE: SHEET NO. 17 OF 24 SHEETS STA. TO STA.

F.A.U. RTE.	SECTION	COUNTY	TOTAL SHEETS	SHEET NO.
5270	21-00067-00-RS	COOK	24	17
TC-10			CONTRACT NO. 61L15	
FED. ROAD DIST. NO. 1 ILLINOIS FED. AID PROJECT L6L2(866)				

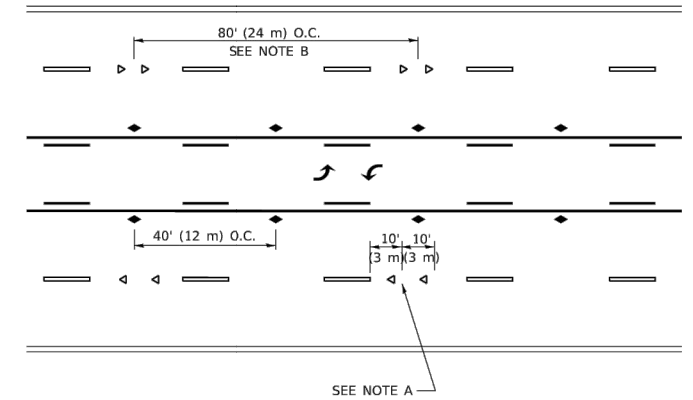


*** REDUCE TO 40' (12 m) O.C. ON CURVES WITH POSTED OR ADVISORY SPEED 45 M.P.H. (70 km/h) OR LESS.

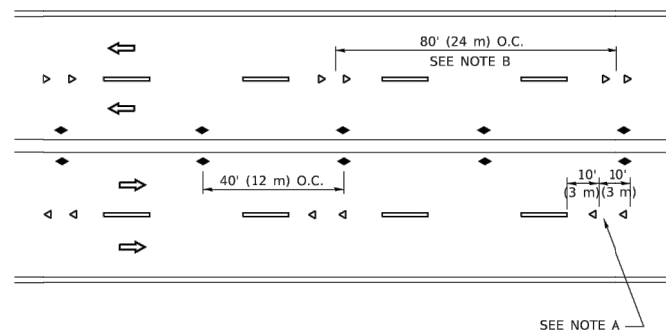
TWO-LANE/TWO-WAY



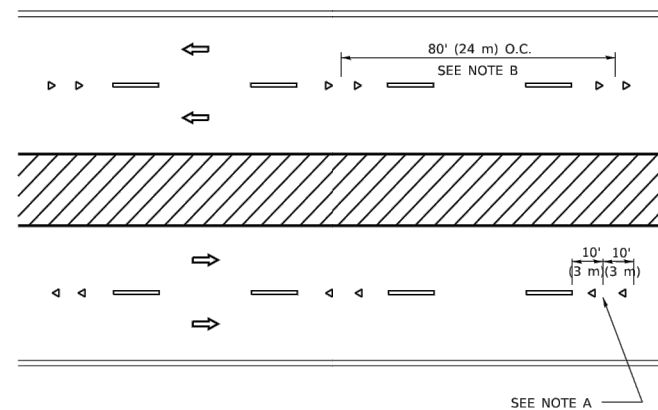
LANE REDUCTION TRANSITION



TWO-WAY LEFT TURN



MULTI-LANE/UNDIVIDED



MULTI-LANE/DIVIDED

GENERAL NOTES

1. MARKERS USED WITH DASHED LINES SHALL BE CENTERED IN THE GAP BETWEEN SEGMENTS.
2. MARKERS USED ADJACENT TO SOLID LINES SHALL BE OFFSET 2 TO 3 (50 TO 75) TOWARD TRAFFIC AS SHOWN.
3. MARKERS THROUGH TANGENTS LESS THAN 500' (150 m) IN LENGTH BETWEEN CURVES SHALL BE INSTALLED AT THE LESSER OF THE TWO CURVE SPACINGS.
4. MARKERS ARE TO BE USED ADJACENT TO BOTH SOLID WHITE LINES IN DUAL LEFT TURN LANES

SYMBOLS

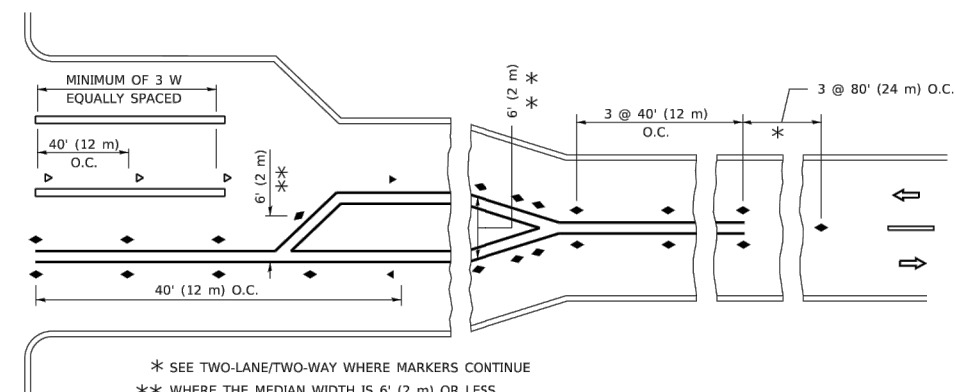
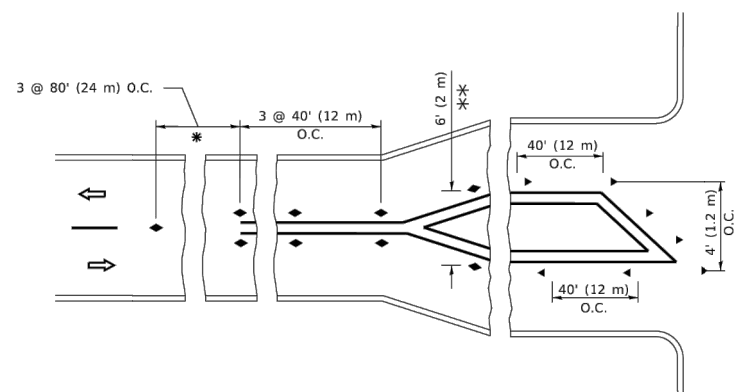
- YELLOW STRIPE
- WHITE STRIPE
- ◀ ONE-WAY AMBER MARKER
- ◀ ONE-WAY CRYSTAL MARKER (W/O)
- ◆ TWO-WAY AMBER MARKER

LANE MARKER NOTES

- A. USE DOUBLE LANE LINE MARKERS SPACED AS SHOWN.
- B. REDUCE TO 40' (12 m) O.C. ON CURVES WHERE ADVISORY SPEEDS ARE 10 M.P.H (20 km/h) LOWER THAN POSTED SPEEDS.

DESIGN NOTES

1. DOUBLE LANE LINE MARKERS SHALL BE USED UNLESS SPECIFIED OTHERWISE.
2. EXCEPT AS SHOWN ON THE LANE REDUCTION TRANSITION AND FREEWAY EXIT RAMP DETAIL, MARKERS ARE NOT TO BE SPECIFIED ON RIGHT EDGE LINES.
3. THE EXACT MARKER LIMITS, SPACING, AND COLOR SHALL BE INCLUDED IN THE PLANS WHEN STANDARD SPECIFICATIONS ARE NOT BEING USED.
4. MARKERS SHOULD NOT BE USED ALONGSIDE CURBS EXCEPT FOR EXTREMELY SHORT SECTIONS OF CURBS WHERE NOT MORE THAN TWO MARKERS WOULD BE INVOLVED.



TURN LANES

* SEE TWO-LANE/TWO-WAY WHERE MARKERS CONTINUE
 ** WHERE THE MEDIAN WIDTH IS 6' (2 m) OR LESS USE TWO-WAY MARKERS.

All dimensions are in inches (millimeters) unless otherwise shown.

FILE NAME = 21R0338-DTLS-01 - DTLS_06

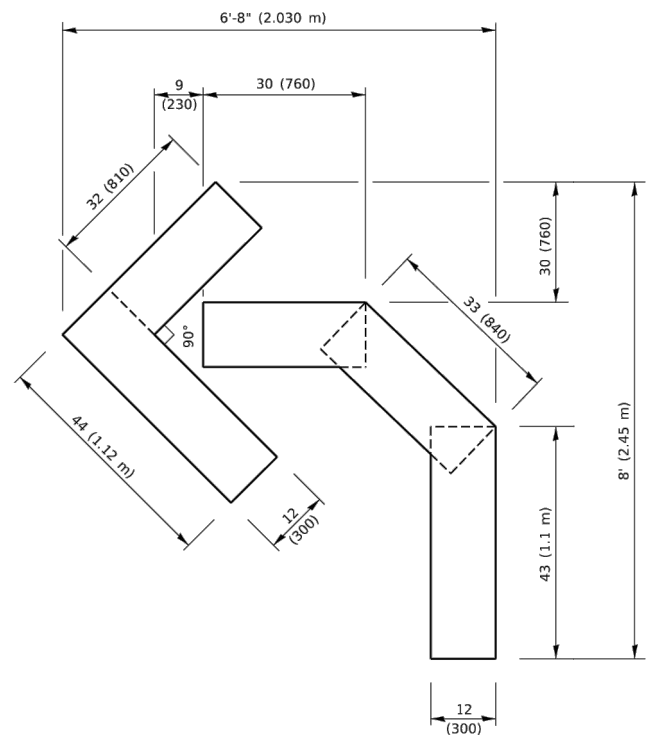
USER NAME =	DESIGNED = MW	REVISED =
	CHECKED = WD	REVISED =
PLOT SCALE =	DRAWN = MED	REVISED =
PLOT DATE = 12-05-24	CHECKED = AG	REVISED =

STATE OF ILLINOIS
 DEPARTMENT OF TRANSPORTATION

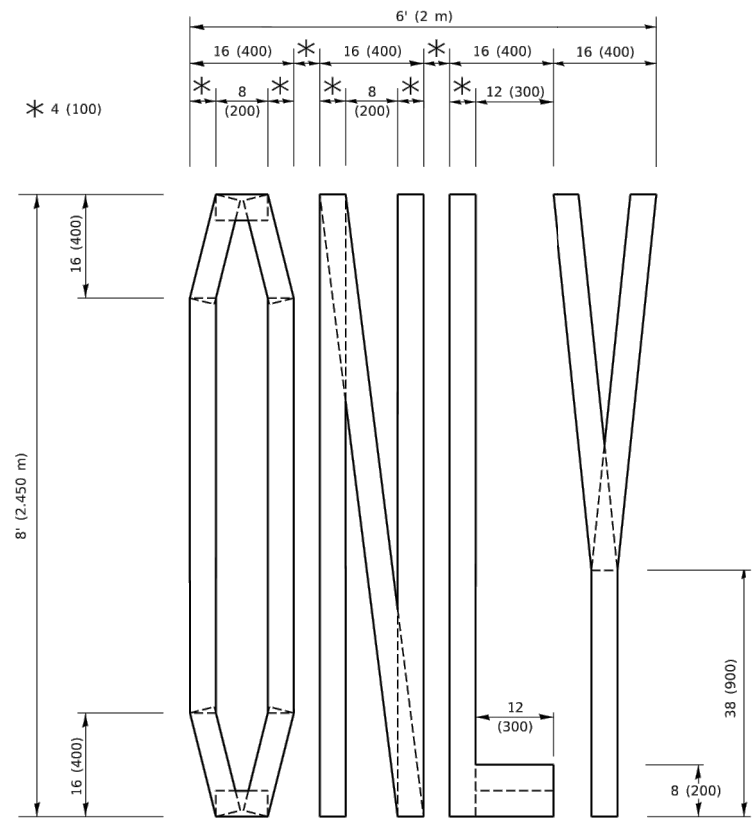
TYPICAL APPLICATIONS
 RAISED REFLECTIVE PAVEMENT MARKERS (SNOW-PLOW RESISTANT)

SCALE: SHEET NO. 18 OF 24 SHEETS STA. TO STA.

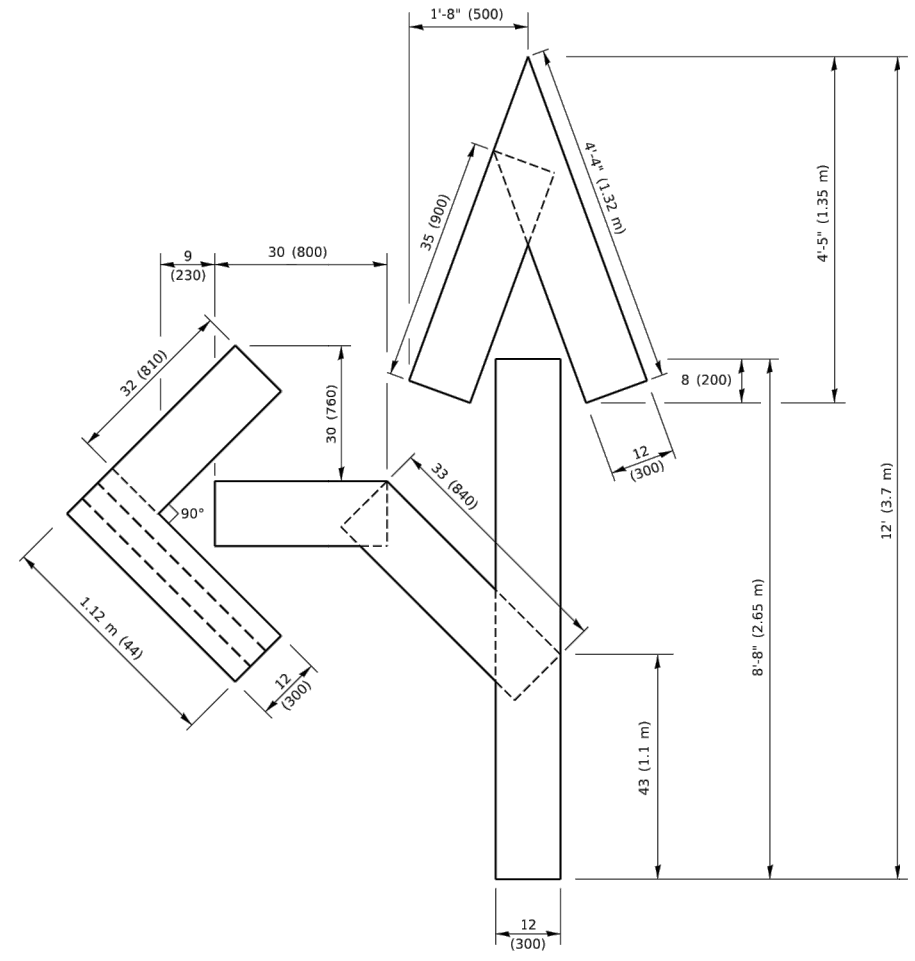
F.A.U. RTE.	SECTION	COUNTY	TOTAL SHEETS	SHEET NO.
5270	21-00067-00-RS	COOK	24	18
TC-11		CONTRACT NO. 61L15		
FED. ROAD DIST. NO. 1		ILLINOIS FED. AID PROJECT L6L2(866)		



QUANTITY
 4 (100) LINE = 45.5 ft. (13.9 m)
 15.2 sq. ft. (1.41 sq. m)

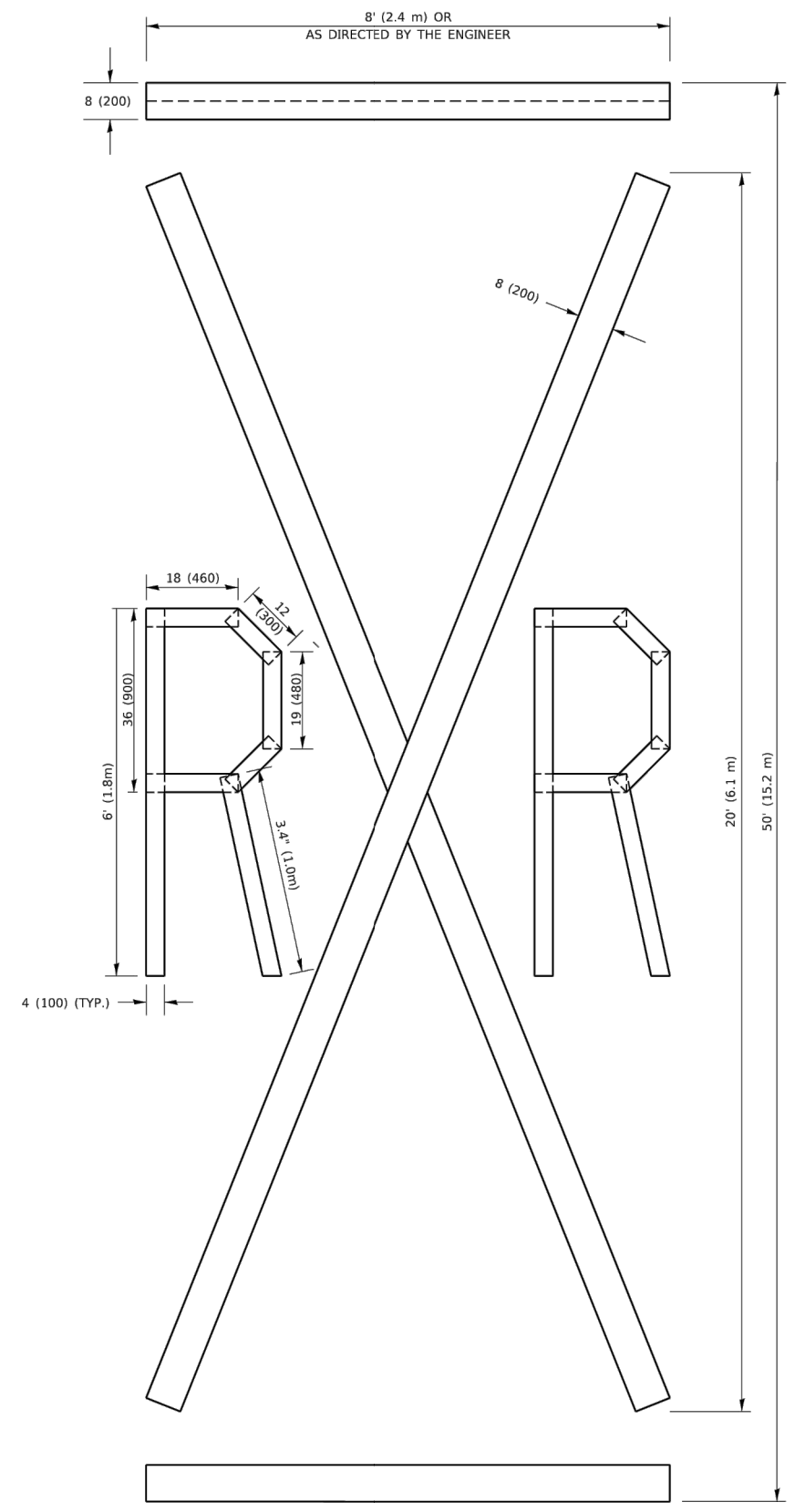


QUANTITY
 4 (100) LINE = 64.1 ft. (19.5 m)
 21.4 sq. ft. (1.99 sq. m)



QUANTITY
 4 (100) LINE = 82.5 ft. (25.1 m)
 27.5 sq. ft. (2.53 sq. m)

NOTE:
 ALL QUANTITIES OF PLACEMENT ARE REPRESENTED IN LINEAR FEET OF 4" LINES TO MATCH THE 4" TEMPORARY TAPE PAY ITEM AND REPRESENTS THE TOTAL QUANTITY OF 4" TAPE REQUIRED.



QUANTITY
 4 (100) LINE = 225.9 ft. (68.9 m)
 75.3 sq. ft. (6.99 sq. m)

All dimensions are in inches (millimeters) unless otherwise shown.

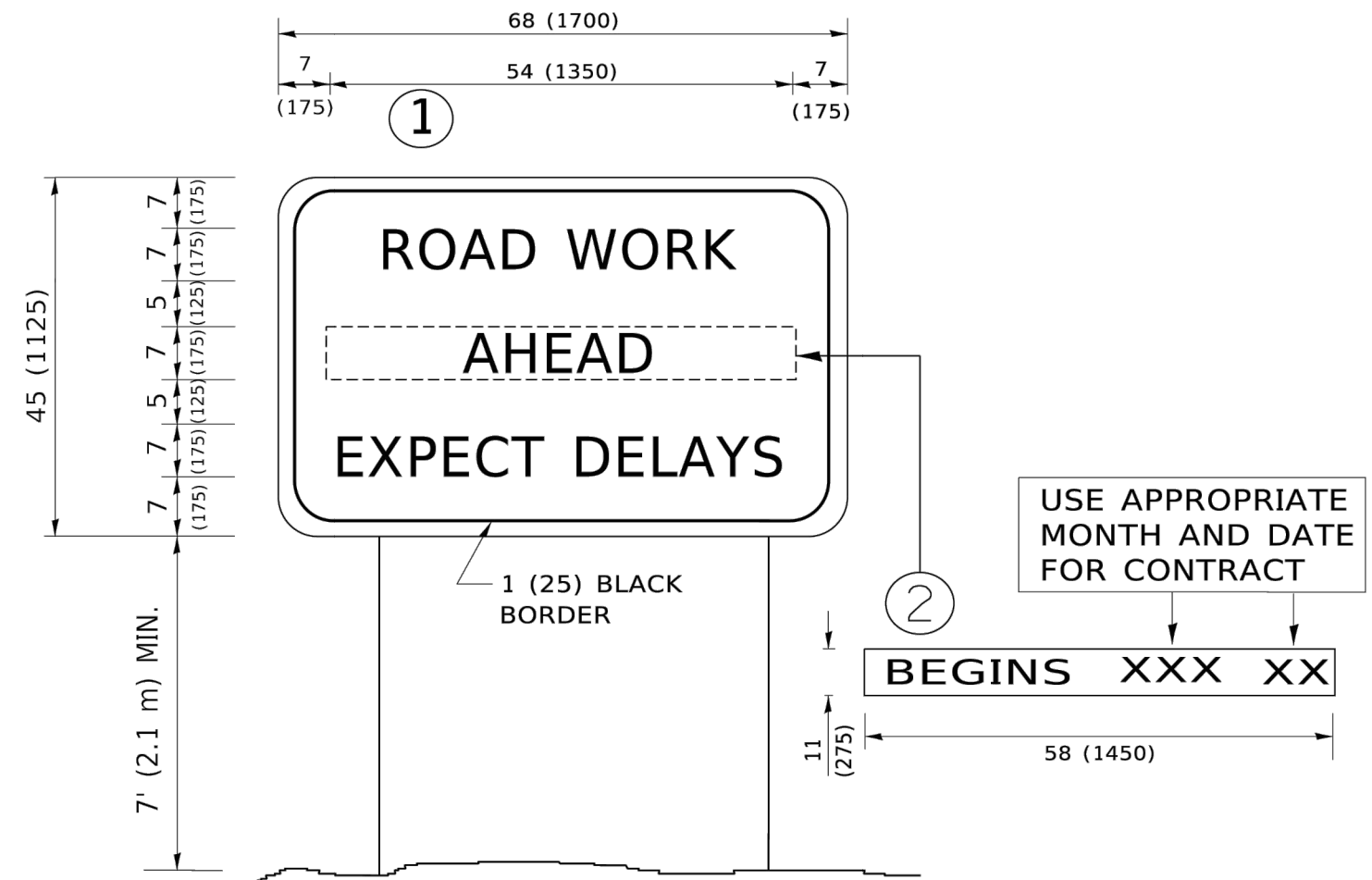
FILE NAME = 21R0338-DTLS-01 - DTLS_08

USER NAME =	DESIGNED = MW	REVISED =
	CHECKED = WD	REVISED =
PLOT SCALE =	DRAWN = MED	REVISED =
PLOT DATE = 12-05-24	CHECKED = AG	REVISED =

STATE OF ILLINOIS
 DEPARTMENT OF TRANSPORTATION

SCALE: SHEET NO. 20 OF 24 SHEETS STA. TO STA.
 IDOT DISTRICT 1 STANDARDS
 SHORT TERM PAVEMENT MARKING LETTERS AND SYMBOLS
 CICCERO AVENUE TO PULASKI ROAD

F.A.U. RTE.	SECTION	COUNTY	TOTAL SHEETS	SHEET NO.
5270	21-00067-00-RS	COOK	24	20
TC-16		CONTRACT NO. 61L15		
FED. ROAD DIST. NO. 1 ILLINOIS FED. AID PROJECT L6L2(866)				



NOTES:

1. USE BLACK LETTERING ON ORANGE BACKGROUND.
2. ERECT SIGNS IN ADVANCE OF THE LOCATION FOR THE "ROAD CONSTRUCTION AHEAD" SIGN AT LOCATIONS AS DIRECTED BY THE ENGINEER.
3. ERECT SIGN ① WITH INSTALLED PANEL ② ONE WEEK PRIOR TO THE START OF CONSTRUCTION.
4. REMOVE PANEL ② SOON AFTER THE START OF CONSTRUCTION.
5. SEE SPECIAL PROVISION FOR "TEMPORARY INFORMATION SIGNING" FOR ADDITIONAL INFORMATION.
6. ONE SIGN ASSEMBLY EQUALS 25.70 SQ. FT. (2.3 SQ. M.)
7. SHALL BE PAID FOR AS TEMPORARY INFORMATION SIGNING.

ALL DIMENSIONS ARE IN INCHES (MILLIMETERS) UNLESS OTHERWISE SHOWN.

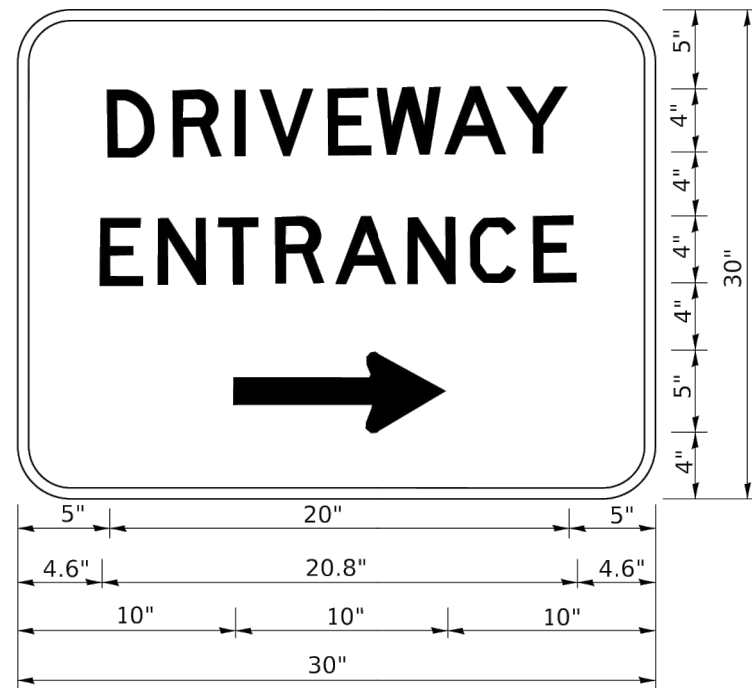
FILE NAME = 21R0338-DTLS-01 - DTLS_09	USER NAME =	DESIGNED = MW	REVISED =
		CHECKED = WD	REVISED =
	PLOT SCALE =	DRAWN = MED	REVISED =
	PLOT DATE = 12-05-24	CHECKED = AG	REVISED =

STATE OF ILLINOIS
DEPARTMENT OF TRANSPORTATION

ARTERIAL ROAD
INFORMATION SIGN

SCALE: SHEET NO. 21 OF 24 SHEETS STA. TO STA.

F.A.U. RTE.	SECTION	COUNTY	TOTAL SHEETS	SHEET NO.
5270	21-00067-00-RS	COOK	24	21
TC-22			CONTRACT NO. 61L15	
FED. ROAD DIST. NO. 1		ILLINOIS	FED. AID PROJECT L6L2(866)	



3.0" RADIUS, 0.5" BORDER, WHITE ON GREEN; REFLECTORIZED
 "DRIVEWAY" D; "ENTRANCE" D; STANDARD ARROW CUSTOM 12.0" x 5.0"

NOTES:

1. HALF OF THE SIGNS WILL REQUIRE A LEFT HAND FACING ARROW.
2. TWO SIGNS SHALL BE USED AT EACH COMMERCIAL ENTRANCE PLACED BACK-TO-BACK: ONE WITH A RIGHT HAND ARROW (SHOWN) SHALL BE PLACED ON THE NEAR RIGHT SIDE THE DRIVEWAY AND ONE WITH A LEFT HAND ARROW SHALL BE PLACED ON THE FAR LEFT SIDE OF THE DRIVEWAY.
3. SIGNS TO BE PAID FOR AS ITEM "TEMPORARY INFORMATION SIGNING".

FILE NAME = 21R0338-DTLS-01 - DTLS_10	USER NAME =	DESIGNED = MW	REVISED =
		CHECKED = WD	REVISED =
	PLOT SCALE =	DRAWN = MED	REVISED =
	PLOT DATE = 12-05-24	CHECKED = AG	REVISED =

STATE OF ILLINOIS
 DEPARTMENT OF TRANSPORTATION

DRIVEWAY ENTRANCE SIGNING

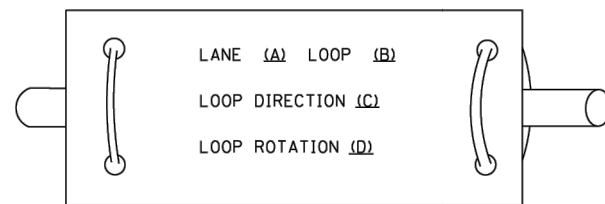
SCALE: SHEET NO. 22 OF 24 SHEETS STA. TO STA.

F.A.U. RTE.	SECTION	COUNTY	TOTAL SHEETS	SHEET NO.
5270	21-00067-00-RS	COOK	24	22
TC-26			CONTRACT NO. 61L15	
FED. ROAD DIST. NO. 1		ILLINOIS	FED. AID PROJECT L6L2(866)	

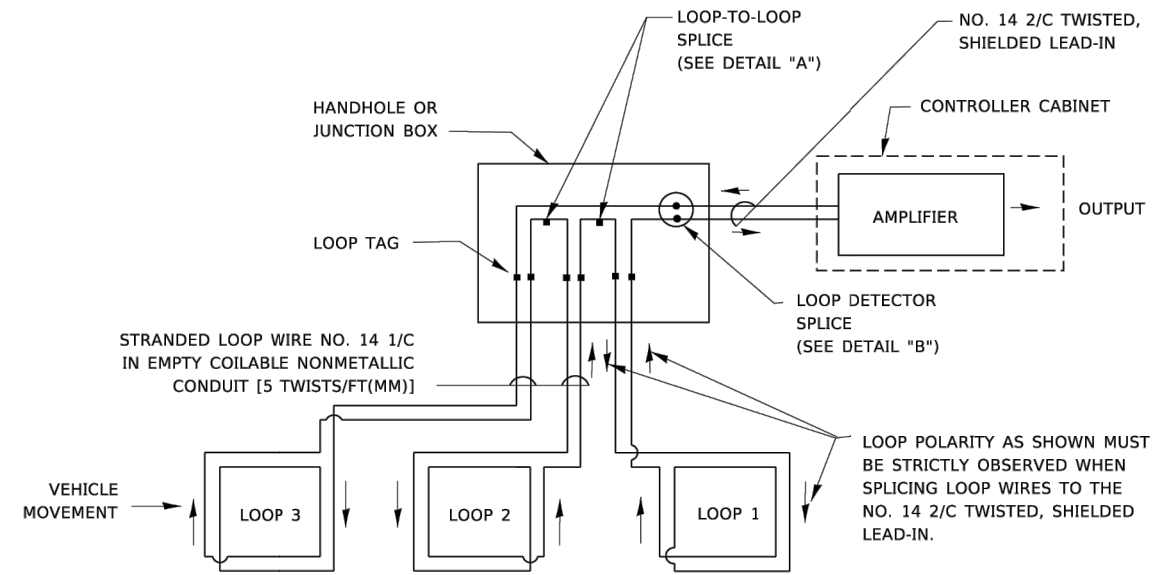
LOOP DETECTOR NOTES

1. EACH PAIR OF LOOP WIRES SHALL BE PLACED IN A SEPARATE EMPTY COILABLE NONMETALLIC CONDUIT FROM THE EDGE OF PAVEMENT TO THE HANDHOLE. SPACING BETWEEN THE HOLES DRILLED IN THE PAVEMENT SHALL NOT BE LESS THAN 6" (150 mm). EMPTY COILABLE NONMETALLIC CONDUIT SHALL BE INCLUDED IN THE COST OF THE LOOP WIRE.
2. THE NUMBER OF LOOP TURNS SHALL BE AS RECOMMENDED BY THE AMPLIFIER MANUFACTURER. ALL ADJACENT SIDES OF THE LOOPS SHALL BE INSTALLED IN SUCH A WAY THAT THE CURRENT FLOW IS IN THE SAME DIRECTION TO REINFORCE ITS MAGNETIC FIELDS FOR SMALL VEHICLE DETECTION.
3. EACH LOOP LEAD-IN SHALL BE IDENTIFIED AND PERMANENTLY TAGGED IN THE HANDHOLE. EACH LEAD-IN CABLE TAG SHALL INDICATE THE LOCATION OF THE LOOP, LOOP ROTATION (CLOCKWISE/COUNTERCLOCKWISE), LOOP LEAD-IN DIRECTION (IN OR OUT), LOOP CABLE NUMBER AND LOCATION IN CABINET, AND NUMBER OF TURNS IN THE DETECTOR LOOPS IN WATER PROOF INK AS INDICATED ON THE DISTRICT 1 STANDARD TRAFFIC SIGNAL DESIGN DETAIL. THE CONTRACTOR SHALL MARK LOOP LOCATIONS ON RECORD DRAWINGS AND PRESENT TO THE ENGINEER AFTER FINAL INSPECTION. LOOPS SHALL BE MARKED BY LANE AND LOOP NUMBER. SEE DETAIL BELOW.
4. ALL LOOP CABLE SHALL BE FASTENED WITH PLASTIC TIE WRAP TO THE HANDHOLE HOOKS.
5. IN ASPHALT PAVEMENT, LOOPS SHOULD BE PLACED IN THE BINDER AND DIVESHOLES MARKED AT THE CURB WITH A SAW-CUT. THE SAW-CUT SHALL BE CUT IN ACCORDANCE WITH LOCAL AND E.P.A. DUST CONTROL REQUIREMENTS. DETECTOR LOOP(S) SHALL NOT BE INSTALLED IN WET CONDITIONS AND THE SAW-CUTS MUST BE FREE OF DEBRIS AND RESIDUE SUCH AS DUST AND WATER WHICH IS TO BE ACHIEVED BY THE USE OF COMPRESSED AIR, WIRE BRUSHING AND HEAT DRYING ACCORDING TO SEALANT MANUFACTURER REQUIREMENTS. THE DETECTOR WIRE SHALL BE HELD IN PLACE BY THE USE OF FORM WEDGES. WEDGES SHALL BE SPACED NO MORE THAN 18" (450 mm) APART.
6. LOOP SPLICES SHALL BE SOLDERED USING A SOLDERING IRON. BLOW TORCHES OR OTHER DEVICES WHICH OXIDIZE COPPER CABLE SHALL NOT BE ALLOWED FOR SOLDERING OPERATIONS. SEE DETAIL BELOW RIGHT.
7. PREFORMED DETECTOR LOOPS SHALL BE USED, AS SHOWN ON THE PLANS, WHERE NEW CONCRETE PAVEMENT IS PROPOSED. THE INSTALLATION OF PREFORMED LOOPS SHALL BE IN ACCORDANCE WITH THE DISTRICT 1 SPECIFICATIONS OR AS DIRECTED BY THE ENGINEER.

LOOP LEAD-IN CABLE TAG

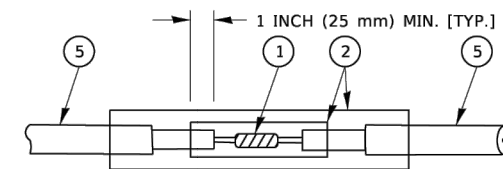


- A. LANE 1 IS THE LANE CLOSEST TO THE CENTERLINE OF THE ROADWAY
- B. LOOP #1 IS THE LOOP IN THE LANE CLOSEST TO THE INTERSECTION.
- C. LABEL LOOP CABLE "IN" OR LOOP CABLE "OUT".
- D. LABEL LOOP CABLE CLOCKWISE OR LOOP CABLE COUNTERCLOCKWISE.

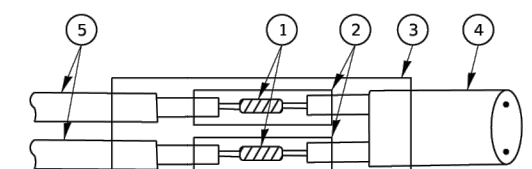


DETECTOR LOOP WIRING SCHEMATIC

- LOOPS SHALL BE SPLICED IN SERIES. SAW-CUTS SHALL BE A MINIMUM WIDTH OF 5/16" (8 mm).
- SAW-CUT DEPTHS SHALL BE 3" (75 mm). IF IN CONCRETE,
- THE SAW-CUT DEPTH SHALL BE TO THE TOP OF THE REINFORCEMENT.
- LOOP CORNERS SHALL BE DRILLED WITH A 2" (50 mm) DIAMETER CORE.

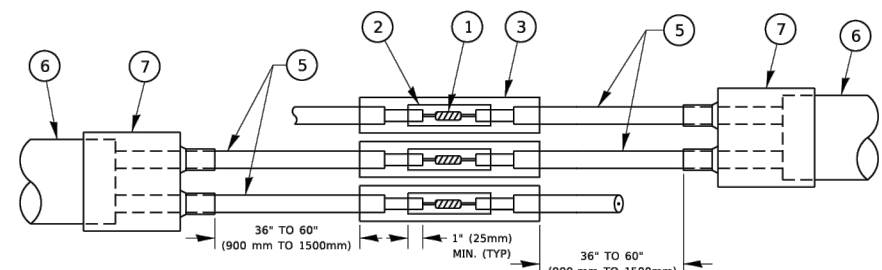


DETAIL "A"
LOOP-TO-LOOP SPLICE

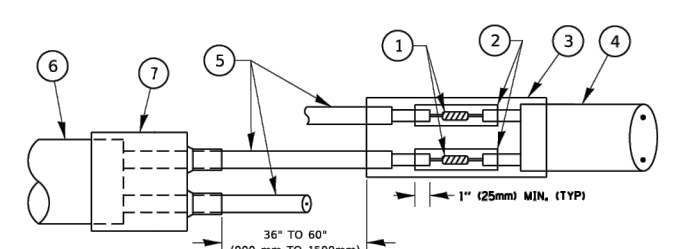


DETAIL "B"
LOOP-TO-CONTROLLER SPLICE

TYPE I LOOP



DETAIL "A"
LOOP-TO-LOOP SPLICE



DETAIL "B"
LOOP-TO-CONTROLLER SPLICE

PREFORMED LOOP

LOOP DETECTOR SPLICE

- 1 WESTERN UNION SPLICE SOLDERED WITH ROSIN CORE FLUX. ALL EXPOSED SURFACES OF THE SOLDER SHALL BE SMOOTH. THE WESTERN UNION SPLICES SHALL BE STAGGERED.
- 2 WCSMW 30/100 HEAT SHRINK TUBE, MINIMUM LENGTH 3" (75 mm), UNDERWATER GRADE.
- 3 WCS 200/750 HEAT SHRINK TUBE, MINIMUM LENGTH 6" (150 mm), UNDERWATER GRADE.
- 4 NO. 14 2/C TWISTED, SHIELDED CABLE.
- 5 LOOP CONDUCTOR WITH FLEXIBLE PLASTIC TUBE. PREFORMED LOOP
- 6 XL POLYOLEFIN 2 CONDUCTOR
- 7 BREAKOUT SEALS. TYCO CBR-2 OR APPROVED EQUAL

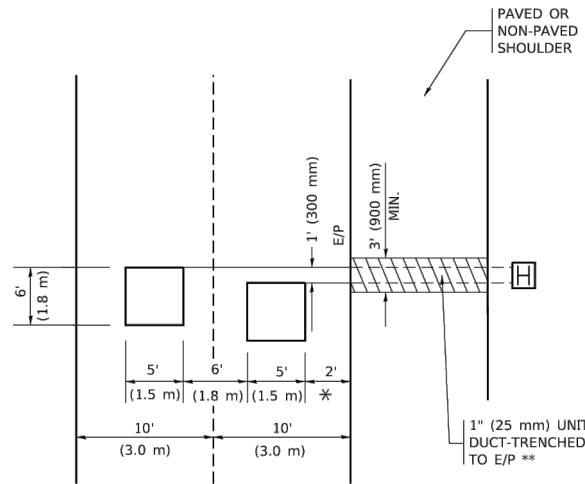
FILE NAME = 21R0338-DTLS-01 - DTLS_11	USER NAME =	DESIGNED = MW	REVISED =
		CHECKED = WD	REVISED =
	PLOT SCALE =	DRAWN = MED	REVISED =
	PLOT DATE = 12-05-24	CHECKED = AG	REVISED =

STATE OF ILLINOIS
DEPARTMENT OF TRANSPORTATION

DISTRICT ONE				F.A.U. RTE.	SECTION	COUNTY	TOTAL SHEETS	SHEET NO.
STANDARD TRAFFIC SIGNAL DESIGN DETAILS				5270	21-00067-00-RS	COOK	24	23
SCALE:				SHEET NO.23 OF 24 SHEETS		STA. TO STA.		
				TS-05		CONTRACT NO. 61L15		
				FED. ROAD DIST. NO.1		ILLINOIS FED. AID PROJECT L6L2(866)		

LOOPS NEXT TO SHOULDERS

PROVIDE A PAVEMENT REPLACEMENT NOTE WHICH SHOULD EQUAL 3' (900 mm) X WIDTH OF PAVED SHOULDER.

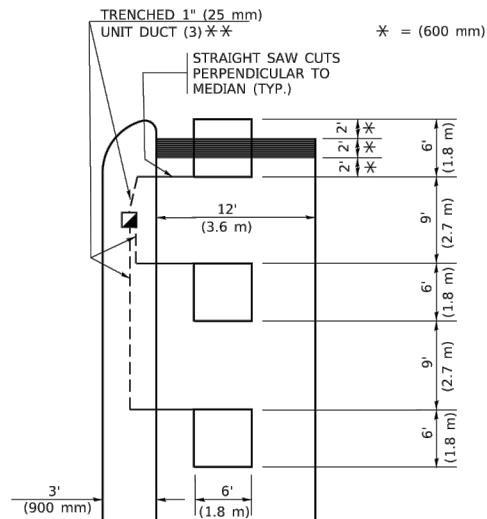


* = (600 mm)

** UNIT DUCT IS TO BE SHOWN ON PLAN SHEETS BUT SHALL NOT BE INCLUDED IN THE PAY ITEMS.

LEFT TURN LANES WITH MEDIANS
VOLUME DENSITY ("FAR OUT" DETECTION)
ON SAME APPROACH
(PROTECTED / PERMITTED LEFT TURN PHASING)

HANDHOLE LOCATION MAY VARY DEPENDING ON GEOMETRICS AND DESIGN OF TRAFFIC SIGNALS. HEAVY-DUTY HANDHOLES TO BE USED WHEN THE MEDIAN IS MOUNTABLE. REFER TO STANDARD 814001 TO ENSURE THAT HANDHOLE FITS IN MEDIAN.

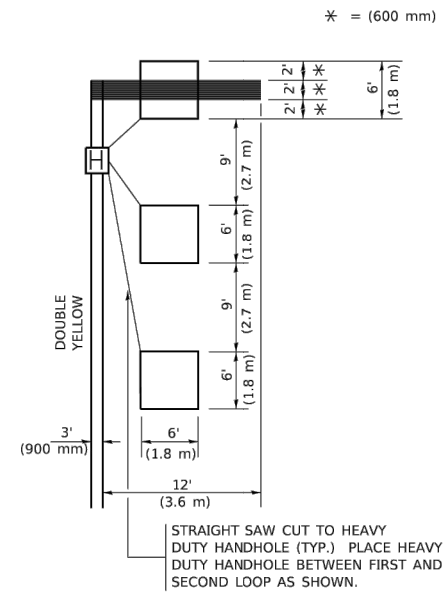


* = (600 mm)

** UNIT DUCT IS TO BE SHOWN ON PLAN SHEETS BUT SHALL NOT BE INCLUDED IN THE PAY ITEMS.

NOTE: DUAL LEFT TURNS NOT SHOWN REFER TO PLAN SHEET FOR DETECTOR LOOP REPLACEMENT

LEFT TURN LANES WITHOUT MEDIANS
VOLUME DENSITY ("FAR OUT" DETECTION)
ON SAME APPROACH
(PROTECTED / PERMITTED LEFT TURN PHASING)



* = (600 mm)

NOTE: DUAL LEFT TURNS NOT SHOWN REFER TO PLAN SHEET FOR DETECTOR LOOP REPLACEMENT

NOTES:

VEHICLES LOOP DETECTORS

- * ALL LEAD IN CABLE SHALL BE TWO CONDUCTOR NO. 14 TWISTED, SHIELDED.
- * EACH DETECTOR LOOP SHALL HAVE ITS OWN SAW CUT FROM THE LOOP TO THE EDGE OF PAVEMENT OR TO A HANDHOLE IN THE PAVEMENT.
- * EACH DETECTOR LOOP SHALL HAVE ITS OWN ONE INCH (25 mm) UNIT DUCT BETWEEN THE EDGE OF PAVEMENT AND THE FIRST HANDHOLE OR JUNCTION BOX. EACH UNIT DUCT RUN SHALL BE SHOWN ON THE PLANS BY THE DESIGNER, BUT SHALL NOT BE PAID FOR SEPARATLY. THIS ITEM IS INCIDENTAL TO THE PAY ITEM FOR DETECTOR LOOPS.
- * ONE DIMENSION OF ALL DETECTOR LOOPS SHALL BE SIX FEET (1.8 m)
- * EACH LANE OF NON-LOCKING, PRESENCE DETECTION AND EACH LANE OF A DOUBLE LEFT TURN LANE REQUIRES A SEPARATE INDUCTIVE LOOP DETECTOR AND LEAD IN CABLE.
- * WHEN NON-LOCKING, PRESENCE DETECTION IS USED, MORE THAN ONE LOOP PER LANE IS REQUIRED BEHIND THE STOP BAR (i.e. 1-1/2, 1-3/4, 2).
- * WHEN SYSTEM LOOPS ARE REQUIRED ON AN APPROACH OF AN INTERSECTION, THE LOOPS USED FOR VOLUME DENSITY AND INTERSECTION TIMING SHALL ALSO BE USED AS SYSTEM DETECTORS. EACH ONE OF THESE TYPE OF LOOPS REQUIRES A SEPARATE TWO CONDUCTOR NO. 14 TWISTED SHIELDED CABLE AND A SEPARATE INDUCTIVE LOOP DETECTOR WHEN NEW CONTROLLERS ARE UTILIZED. THE DESIGNER SHALL LABEL THESE TYPES OF LOOPS AS "INTERSECTION AND SAMPLING (SYSTEM) DETECTORS" ON THE SIGNAL LAYOUT, THE INTERCONNECT PLAN AND THE SYSTEM CABLE PLAN. WHEN AN EXISTING CONTROLLER IS UTILIZED FOR THIS TYPE OF DETECTION, THE PAY ITEM "INDUCTIVE LOOP DETECTOR WITH SYSTEM OUTPUT" SHOULD BE USED.

PLACEMENT OF DETECTORS

THE FOLLOWING FIGURES REPRESENT THE MOST COMMON DETECTOR LOOP LOCATIONS AND SIZES. ADJUSTMENTS WILL BE NECESSARY FOR SPECIFIC GEOMETRIC CONSIDERATIONS.

LOCATIONS AND DEMENSIONS OF DETECTOR LOOPS ARE REQUIRED ON ALL SIGNAL LAYOUT PLAN SHEETS.

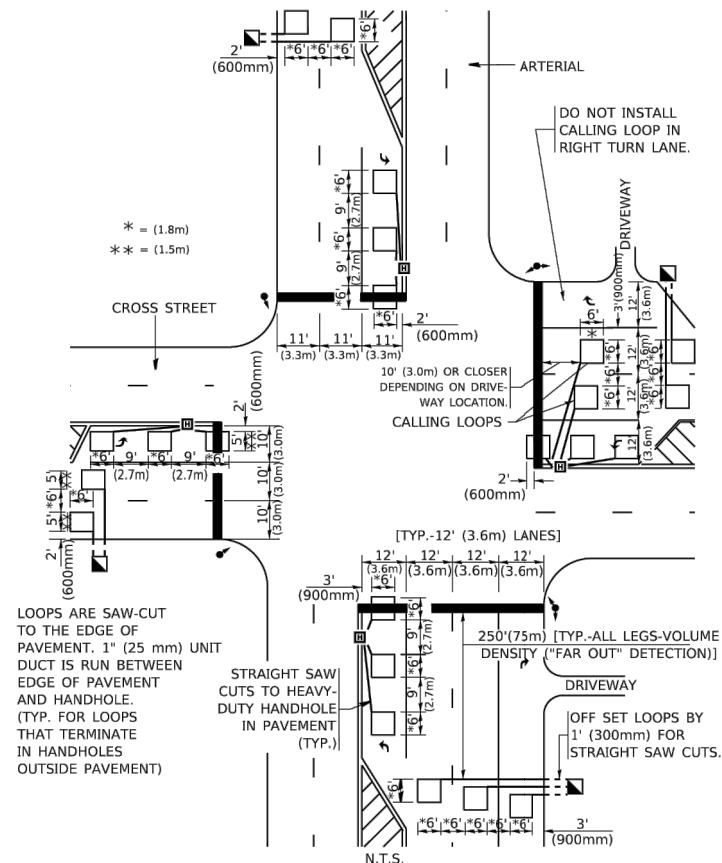
"FAR OUT" DETECTION REFERS TO LOCKING, PRESENCE TYPE DETECTION LOCATED IN THRU LANES, RIGHT TURN LANES, AND RIGHT TURN LANE TAPER AREAS (IF APPLICABLE), USUALLY 250' (75 m) IN ADVANCE OF STOP BARS. "UPTIGHT" DETECTION REFERS TO NON-LOCKING PRESENCE TYPE DETECTION LOCATED IN ALL LANES AND 10'-15' (3.0 m-4.5 m) BEHIND THE CROSSING STREET'S EDGE OF PAVEMENT EXTENDED.

NOTE:

ALL DETAILS AND NOTES SHOWN ARE FROM THE I.D.O.T. DISTRICT 1 TRAFFIC SIGNAL DESIGN GUIDELINES DATED JANUARY 1995

THIS DRAWING HAS BEEN PREPARED TO ASSIST THE RESIDENT ENGINEER FOR ALL ROADWAY RESURFACING OR S.M.A.R.T. PROJECTS WHERE THE DIMENSIONS ARE NOT SHOWN ON THE PLANS AND THE FINAL LOCATIONS FOR CROSSWALKS OR STOP BARS ARE NOT DETERMINED.

ARTERIAL-VOLUME DENSITY ("FAR OUT" DETECTION)
CROSS STREET-NON VOLUME DENSITY ("FAR OUT" DETECTION)



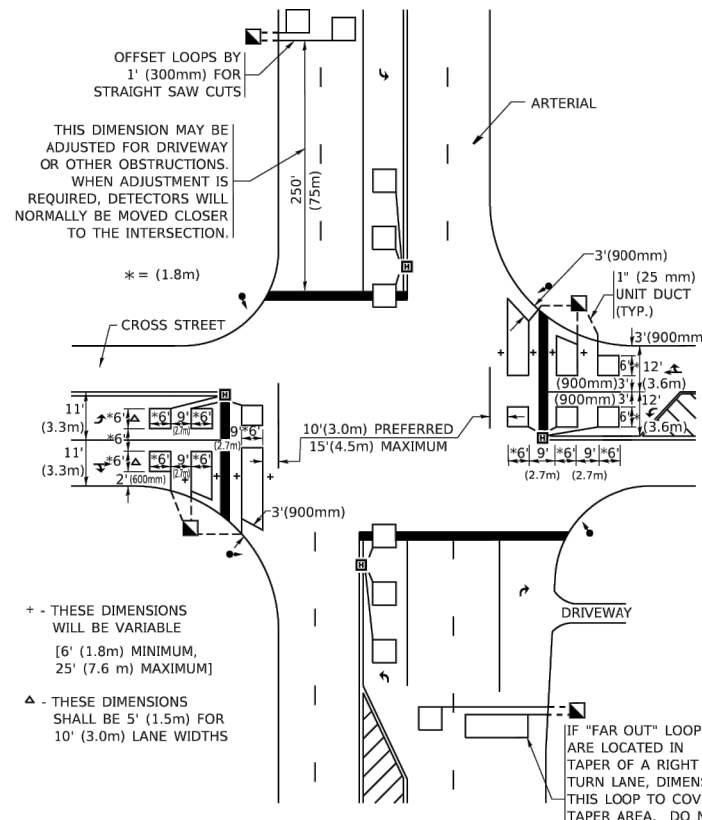
* = (1.8m)
 ** = (1.5m)

LOOPS ARE SAW-CUT TO THE EDGE OF PAVEMENT. 1" (25 mm) UNIT DUCT IS RUN BETWEEN EDGE OF PAVEMENT AND HANDHOLE (TYP. FOR LOOPS THAT TERMINATE IN HANDHOLES OUTSIDE PAVEMENT)

STRAIGHT SAW CUTS TO HEAVY-DUTY HANDHOLE IN PAVEMENT (TYP.)

DETAIL 1
 N.T.S.

ARTERIAL-VOLUME DENSITY ("FAR OUT" DETECTION)
CROSS STREET-NON VOLUME DENSITY ("UPTIGHT" PRESENCE DETECTION)



THIS DIMENSION MAY BE ADJUSTED FOR DRIVEWAY OR OTHER OBSTRUCTIONS. WHEN ADJUSTMENT IS REQUIRED, DETECTORS WILL NORMALLY BE MOVED CLOSER TO THE INTERSECTION.

+ - THESE DIMENSIONS WILL BE VARIABLE [6' (1.8m) MINIMUM, 25' (7.6 m) MAXIMUM]
 ▲ - THESE DIMENSIONS SHALL BE 5' (1.5m) FOR 10' (3.0m) LANE WIDTHS

IF "FAR OUT" LOOPS ARE LOCATED IN TAPER OF A RIGHT TURN LANE, DIMENSION THIS LOOP TO COVER TAPER AREA. DO NOT COVER THE LEFT TURN LANE OR LEFT TURN LANE TAPER.

DETAIL 2
 N.T.S.

FILE NAME = 21R0338-DTLS-01 - DTLS_12

USER NAME =	DESIGNED = MW	REVISED =
	CHECKED = WD	REVISED =
PLOT SCALE =	DRAWN = MED	REVISED =
PLOT DATE = 12-05-24	CHECKED = AG	REVISED =

STATE OF ILLINOIS
 DEPARTMENT OF TRANSPORTATION

DISTRICT 1 - DETECTOR LOOP INSTALLATION
 DETAILS FOR ROADWAY RESURFACING

SCALE: SHEET NO.24 OF 24 SHEETS STA. TO STA.

F.A.U. RTE.	SECTION	COUNTY	TOTAL SHEETS	SHEET NO.
5270	21-00067-00-RS	COOK	24	24
TS-07		CONTRACT NO. 61L15		
FED. ROAD DIST. NO.1		ILLINOIS FED. AID PROJECT L6L2(866)		