

STATE OF ILLINOIS
DEPARTMENT OF TRANSPORTATION

F.A.P. RTE.	SECTION	COUNTY	TOTAL SHEETS	SHEET NO.
698	(1BR)BC-2	PUTNAM	7	1
		ILLINOIS	CONTRACT NO. 66N41	

INDEX OF SHEETS

- 1. COVER SHEET
- 2. GENERAL NOTES
- 3. SUMMARY OF QUANTITIES
- 4. TYPICAL SECTIONS
- 5. SCHEDULE
- 6 - 7. EXISTING STRUCTURE PLANS - STRUCTURE NO. 078-0047

**PROPOSED
HIGHWAY PLANS**

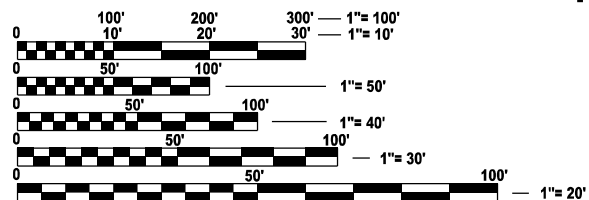
**F.A.P. ROUTE 698 (IL 89)
SECTION (1BR)BC-2
PROJECT STP-URB A7T0(815)
BRIDGE WASHING
PUTNAM**

HIGHWAY STANDARDS

- 000001-08 STANDARD SYMBOLS, ABBREVIATIONS AND PATTERNS
- 001006 DECIMAL OF AN INCH AND OF A FOOT
- 701001-02 OFF-ROAD OPERATIONS 2L, 2W, MORE THAN 15' (4.5 m) AWAY
- 701006-05 OFF-ROAD OPERATIONS 2L, 2W, 15' (4.5 m) TO 24" (600 mm) FROM PAVEMENT EDGE
- 701301-04 LANE CLOSURE, 2L, 2W, SHORT TIME OPERATIONS
- 701501-06 URBAN LANE CLOSURE, 2L, 2W, UNDIVIDED
- 701901-10 TRAFFIC CONTROL DEVICES

C-93-077-23

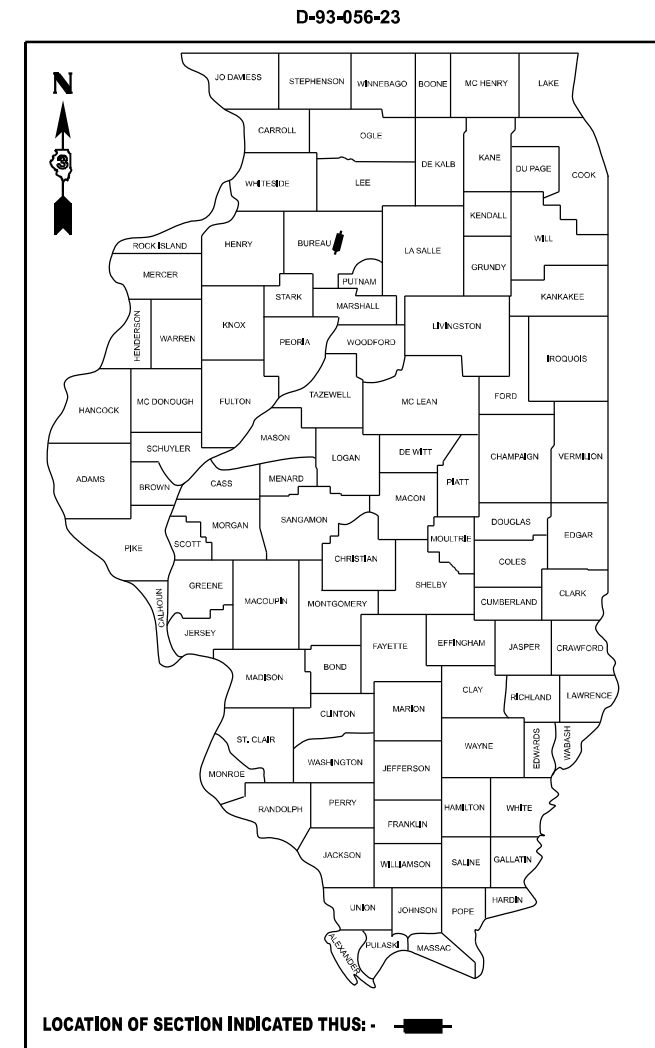
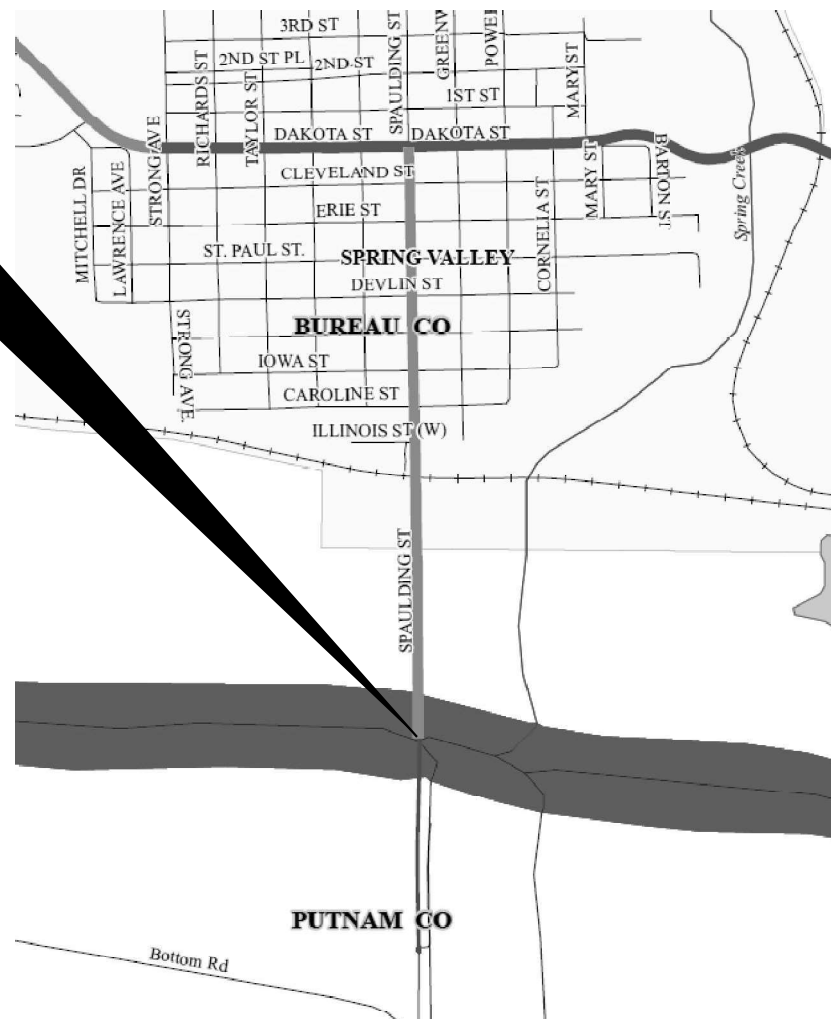
**PROJECT LOCATION
STRUCTURE NO. 078-0047
CARRYING F.A.P. ROUTE 698 (IL 89)
OVER THE ILLINOIS RIVER
0.91 MILES SOUTH OF US ROUTE 6
PUTNAM COUNTY**



FULL SIZE PLANS HAVE BEEN PREPARED USING STANDARD ENGINEERING SCALES. REDUCED SIZED PLANS WILL NOT CONFORM TO STANDARD SCALES. IN MAKING MEASUREMENTS ON REDUCED PLANS, THE ABOVE SCALES MAY BE USED.

**J.U.L.I.E.
JOINT UTILITY LOCATION INFORMATION FOR EXCAVATION
1-800-892-0123
OR 811**

**PROJECT ENGINEER: YOGESH PATEL P.E.
UNIT CHIEF: RON WOODSHANK
DISTRICT 3 (815) 434-6131
CONTRACT NO. 66N41**



LOCATION OF SECTION INDICATED THUS: - [black rectangle] -

FUNCTIONAL CLASSIFICATION

MINOR ARTERIAL
F.A.P. ROUTE 698 (IL 89)
2021 ADT = 4550
P.V. 94.6 % S.U. 2.4 % M.U. 3.0 %

STATE OF ILLINOIS
DEPARTMENT OF TRANSPORTATION

SUBMITTED December 11, 2024

Trisha Thompson
REGIONAL ENGINEER

January 31, 2025
Scott A. [Signature]
ENGINEER OF DESIGN AND ENVIRONMENT

January 31, 2025
[Signature]
DIRECTOR OF HIGHWAYS PROJECT IMPLEMENTATION

**PRINTED BY THE AUTHORITY
OF THE STATE OF ILLINOIS**

GENERAL NOTES

BRIDGE WASHING SHALL INCLUDE THE BRIDGE DECK SURFACE, INSIDE FACE AND TOP SURFACE OF PARAPETS, DECK DRAINS, SCUPPERS, ALL ELEMENTS OF THE SUPERSTRUCTURE, (STEEL FRAMING) AND SUBSTRUCTURE ELEMENTS, (TOP OF ABUTMENT BEARING SEATS AND TOPS OF ALL PIERS).

COMMITMENTS

PRIOR TO BEGINNING ANY CONSTRUCTION WORK ON THIS PROJECT, THE RESIDENT ENGINEER/TECHNICIAN AND THE CONTRACTOR SHALL VERIFY THE FULL SCOPE OF WORK AS SPECIFIED IN THE PLANS AND CONTRACT DOCUMENTS.

STATE OF ILLINOIS
DEPARTMENT OF TRANSPORTATION
DISTRICT THREE
AS BUILT INFORMATION

SUPERVISING CONSTRUCTION FIELD ENGINEER

RESIDENT ENGINEER / TECHNICIAN

START & END DATES
OF CONSTRUCTION:

INSPECTORS:

MODEL: D:\infuit
FILE NAME: D:\infuit\p\m\DOT\Documents\DOT Office\District 3\ORD Projects\0388N41\CAD\Drawings\CADD Sheets\66N41.dgn

USER NAME = ronald.woodshank	DESIGNED - RW	REVISED -
	DRAWN - RW	REVISED -
PLOT SCALE = \$SCALE\$	CHECKED - YP	REVISED -
PLOT DATE = 8/29/2024	DATE - 3/17/2023	REVISED -

STATE OF ILLINOIS
DEPARTMENT OF TRANSPORTATION

GENERAL NOTES

SCALE: SHEET 1 OF 1 SHEETS STA. TO STA.

F.A.P. RTE.	SECTION	COUNTY	TOTAL SHEETS	SHEET NO.
698	(1BR)BC-2	PUTNAM	7	2
CONTRACT NO. 66N41				
ILLINOIS FED. AID PROJECT				

MODEL: D:\infuit...
 FILE NAME: D:\infuit...
 PROJECT: ...

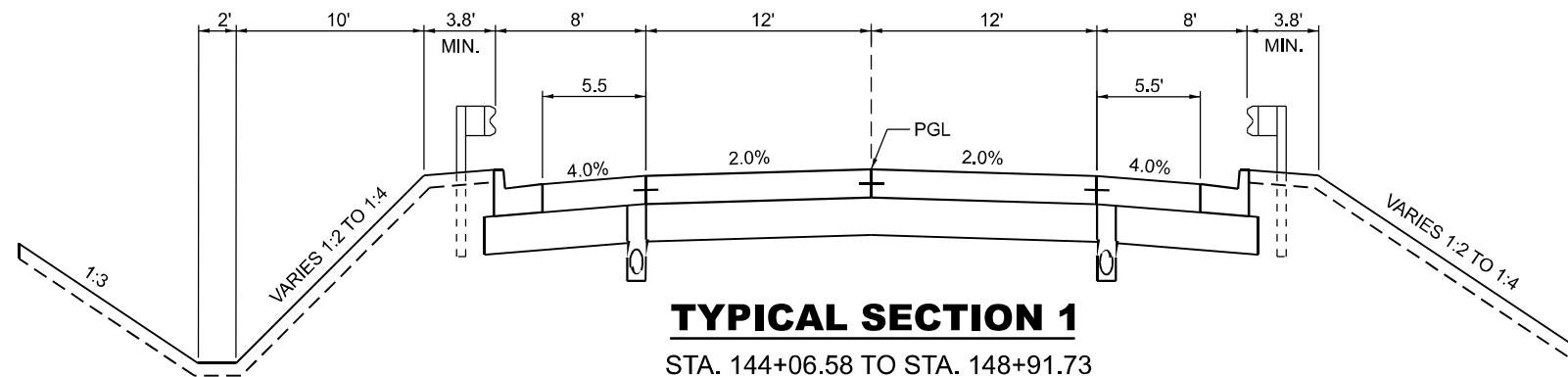
CODE NO.	ITEM	UNIT	TOTAL	CONSTRUCTION CODE
				MBPM
				80% FED / 20% STATE
				STP-URB
				BRIDGE
				0047
59200101	BRIDGE WASHING NO. 1	EACH	1	1
67100100	MOBILIZATION	L SUM	1	1
70102621	TRAFFIC CONTROL AND PROTECTION, STANDARD 701501	EACH	1	1
70107025	CHANGEABLE MESSAGE SIGN	CAL DA	28	28
X5870015	BRIDGE DECK CONCRETE SEALER	SQ FT	84839	84839

USER NAME = ronald.woodshank	DESIGNED - RW	REVISED -
DRAWN - RW	CHECKED - YP	REVISED -
PLOT SCALE = \$SCALE\$	DATE - 3/17/2023	REVISED -
PLOT DATE = 8/29/2024		

**STATE OF ILLINOIS
 DEPARTMENT OF TRANSPORTATION**

SUMMARY OF QUANTITIES			
SCALE:	SHEET 1	OF 1	SHEETS

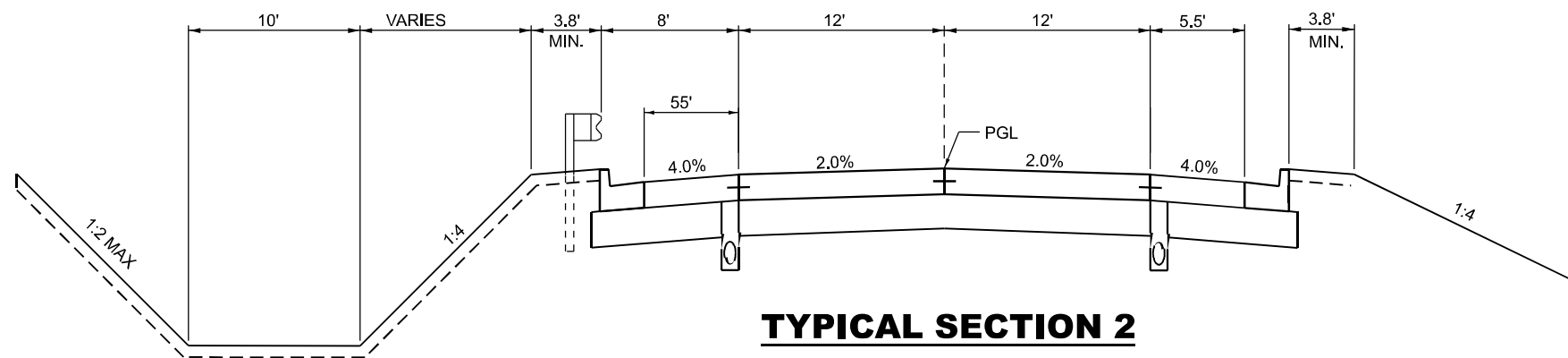
F.A.P. RTE.	SECTION	COUNTY	TOTAL SHEETS	SHEET NO.
698	(1BR)BC-2	PUTNAM	7	3
CONTRACT NO. 66N41				
ILLINOIS FED. AID PROJECT				



TYPICAL SECTION 1

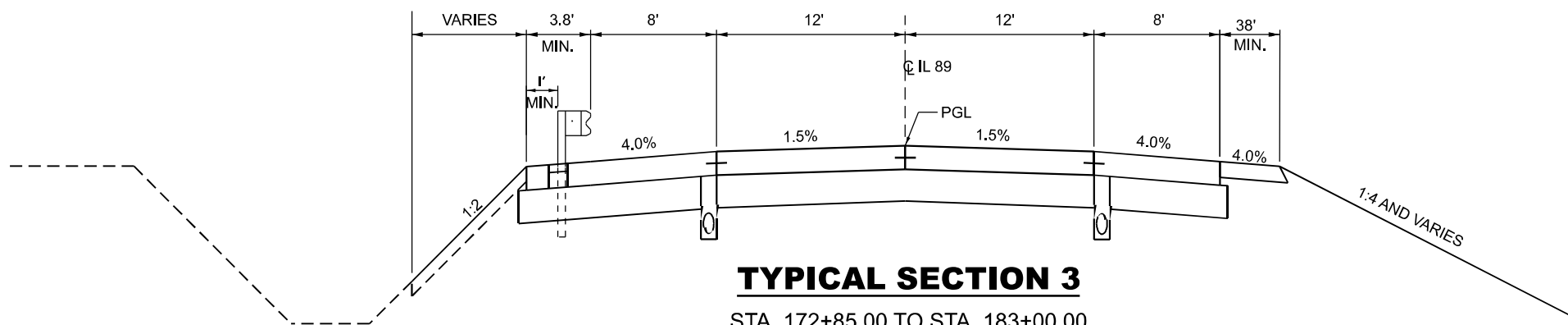
STA. 144+06.58 TO STA. 148+91.73
(LOOKING SOUTH)

STRUCTURE NO. 078-0047
STA. 148+91.73 TO STA. 166+62.15



TYPICAL SECTION 2

STA. 166+62.15 TO STA. 172+85.00
LOOKING SOUTH



TYPICAL SECTION 3

STA. 172+85.00 TO STA. 183+00.00
LOOKING SOUTH

MODEL: D:\inf\... FILE NAME: ...

USER NAME = ronald.woodshank	DESIGNED - RW	REVISED -
DRAWN - RW	CHECKED - YP	REVISED -
PLOT SCALE = \$SCALE\$	DATE - 3/17/2023	REVISED -
PLOT DATE = 12/12/2024		

STATE OF ILLINOIS
DEPARTMENT OF TRANSPORTATION

TYPICAL SECTIONS

SCALE: SHEET 1 OF 1 SHEETS STA. TO STA.

F.A.P. RTE.	SECTION	COUNTY	TOTAL SHEETS	SHEET NO.
698	(1BR)BC-2	PUTNAM	7	4
CONTRACT NO. 66N41				
ILLINOIS FED. AID PROJECT				

SCHEDULE - CONCRETE SEALER

LOCATION			NORTH	SOUTH	PIER	PIER	PIER	PIER	PIER	PIER	PIER	NB	NB	NB	SB	SB	SB
STA.	TO	STA.	ABUT.	ABUT.	1	2	3	4	5	6	7	PARAPET	SHOULDER	DRIVE LANE	DRIVE LANE	SHOULDER	PARAPET
			SQ FT	SQ FT	SQ FT	SQ FT	SQ FT	SQ FT	SQ FT	SQ FT	SQ FT	SQ FT	SQ FT	SQ FT	SQ FT	SQ FT	SQ FT
148+89			553														
148+89	TO	150+71										543	1459	2188	2188	1459	543
		150+71			215												
150+71		152+52										539	1448	2172	2172	1448	539
		152+52				367											
152+52		155+20										799	2144	3216	3216	2144	799
		155+20					356										
155+20		158+85										1088	2920	4380	4380	2920	1088
		158+85						356									
158+85		161+53										799	2144	3216	3216	2144	799
		161+53							367								
161+53		163+03										447	1200	1800	1800	1200	447
		163+03								215							
163+03		165+13										626	1680	2520	2520	1680	626
		165+13															
165+13		166+65										453	1216	1824	1824	1216	453
		166+65		553													
SUBTOTAL			553	553	215	367	356	356	367	215	215	5294	14211	21316	21316	14211	5294
TOTAL			84839														

MODEL: D:\inf\...
 FILE NAME: ...

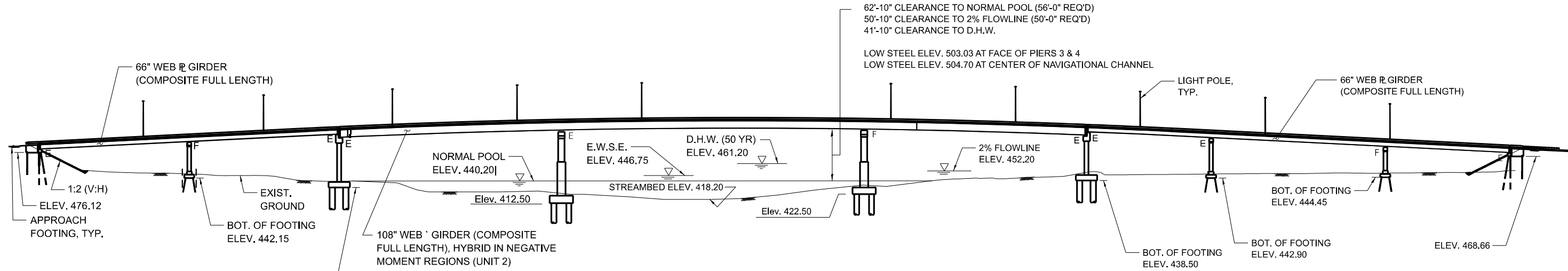
USER NAME = ronald.woodshank	DESIGNED - RW	REVISED -
	DRAWN - RW	REVISED -
PLOT SCALE = \$SCALE\$	CHECKED - YP	REVISED -
PLOT DATE = 8/29/2024	DATE - 3/17/2023	REVISED -

**STATE OF ILLINOIS
 DEPARTMENT OF TRANSPORTATION**

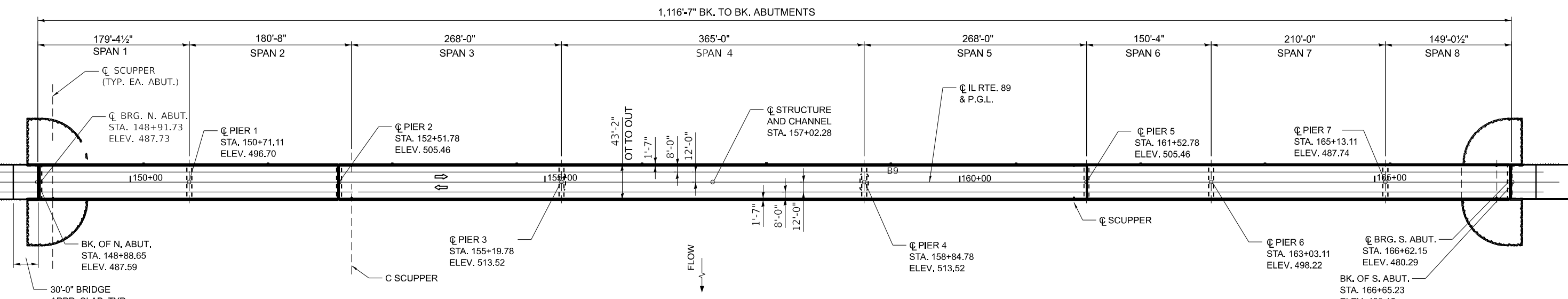
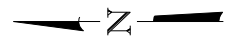
**SCHEDULE FOR
 STRUCTURE NO. 078-0047 (SPRING VALLEY)**

SCALE: SHEET 1 OF 2 SHEETS STA. TO STA.

F.A.P. RTE.	SECTION	COUNTY	TOTAL SHEETS	SHEET NO.
698	(1BR)BC-2	PUTNAM	7	5
CONTRACT NO. 66N41				
ILLINOIS FED. AID PROJECT				



ELEVATION



PLAN

MODEL: D:\inf\...
 FILE NAME: ...
 PROJECT: ...
 DATE: 8/29/2024

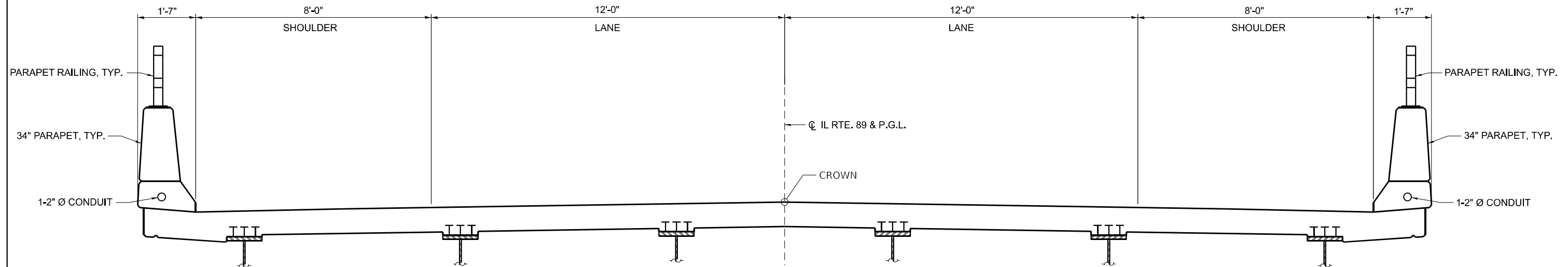
USER NAME = ronald.woodshank	DESIGNED - RW	REVISED -
DRAWN - RW	REVISIONS -	
PLOT SCALE = \$SCALE\$	CHECKED - YP	REVISED -
PLOT DATE = 8/29/2024	DATE - 3/17/2023	REVISED -

**STATE OF ILLINOIS
 DEPARTMENT OF TRANSPORTATION**

**EXISTING GENERAL PLAN AND ELEVATION
 STRUCTURE NO. 078-0047 (SPRING VALLEY)**

SCALE: SHEET 1 OF 2 SHEETS STA. TO STA.

F.A.P. RTE. 698	SECTION (1BR)BC-2	COUNTY PUTNAM	TOTAL SHEETS 7	SHEET NO. 6
CONTRACT NO. 66N41			ILLINOIS FED. AID PROJECT	



NEAR PIER

CROSS SECTION

STA. 148+91.73 TO STA. 166+62.15
(LOOKING SOUTH)

NEAR MIDSPAN

MODEL: D:\inf\...
 FILE NAME: ...
 USER: ...
 PLOT DATE: ...

USER NAME = ronald.woodshank	DESIGNED - RW	REVISED -
	DRAWN - RW	REVISED -
PLOT SCALE = \$SCALE\$	CHECKED - YP	REVISED -
PLOT DATE = 8/28/2024	DATE - 3/17/2023	REVISED -

**STATE OF ILLINOIS
DEPARTMENT OF TRANSPORTATION**

**EXISTING CROSS SECTION
STRUCTURE NO. 078-0047 (SPRING VALLEY)**

SCALE: SHEET 2 OF 2 SHEETS STA. TO STA.

F.A.P. RTE.	SECTION	COUNTY	TOTAL SHEETS	SHEET NO.
698	(1BR)BC-2	PUTNAM	7	7
CONTRACT NO. 66N41				
ILLINOIS FED. AID PROJECT				