

STATE OF ILLINOIS
DEPARTMENT OF TRANSPORTATION

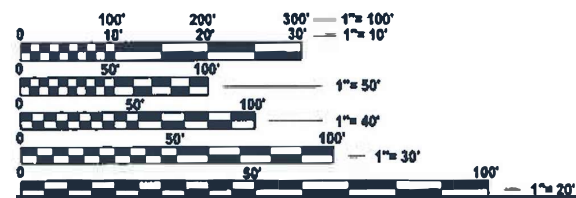
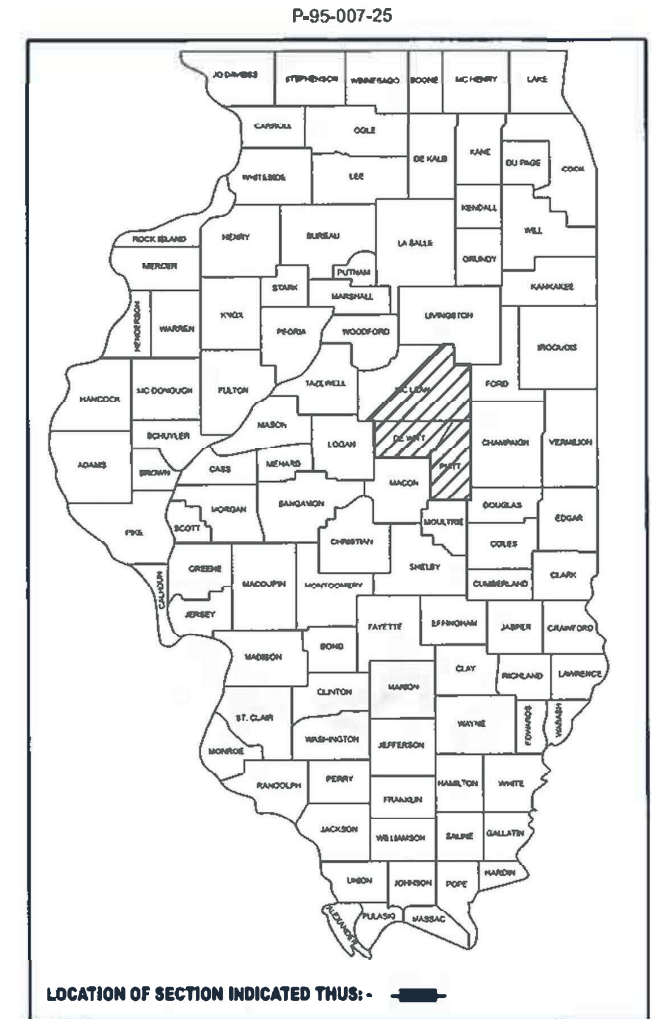
F.A. RTE.	SECTION	COUNTY	TOTAL SHEETS	SHEET NO.
VAR.	FY25 BRIDGE DECK SEALING	VARIOUS	22	1
		ILLINOIS	CONTRACT NO. 70G76	

FOR INDEX OF SHEETS, SEE SHEET NO. 2

PROPOSED HIGHWAY PLANS

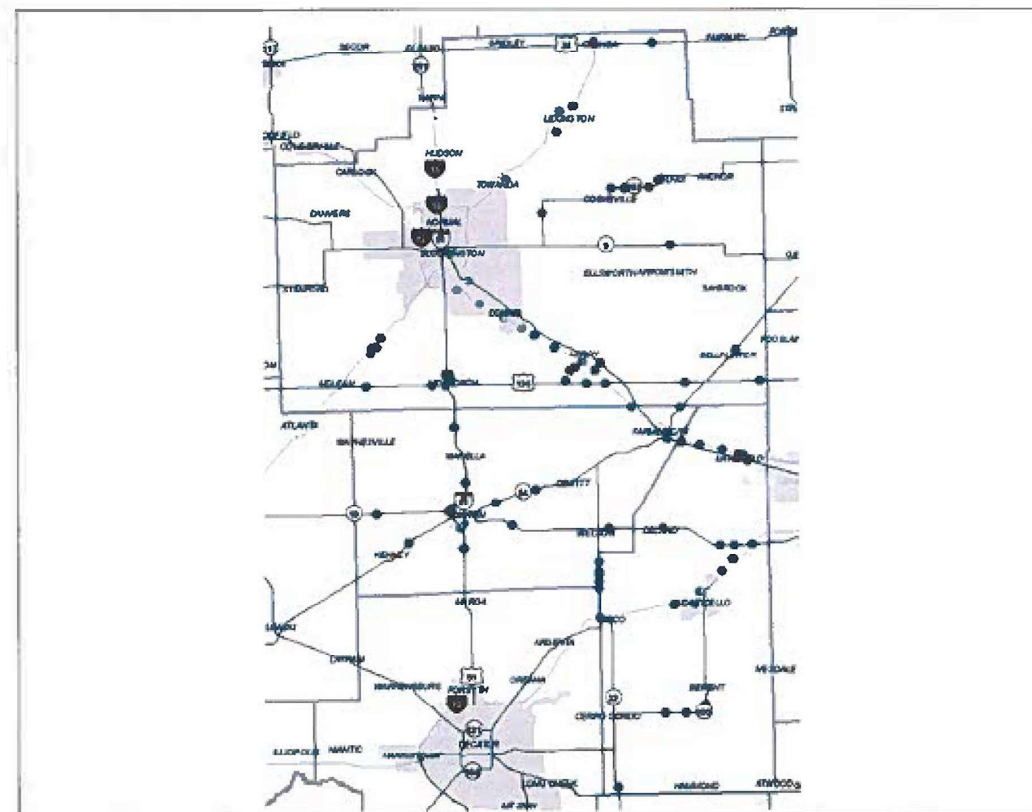
VARIOUS ROUTES
SECTION FY2025 BRIDGE DECK SEALING
PROJECT ST - STATE ONLY
BRIDGE PRESERVATION
VARIOUS COUNTIES

C-95-045-24



FULL SIZE PLANS HAVE BEEN PREPARED USING STANDARD ENGINEERING SCALES. REDUCED SIZED PLANS WILL NOT CONFORM TO STANDARD SCALES. IN MAKING MEASUREMENTS ON REDUCED PLANS, THE ABOVE SCALES MAY BE USED.

J.U.L.I.E.
JOINT UTILITY LOCATION INFORMATION FOR EXCAVATION
1-800-892-0123
OR 811



PROJECT ENGINEER: TIMOTHY J. BRANDENBURG
PROJECT MANAGER: S.A.A. / (217) 465-4181

CONTRACT NO. 70G76

GROSS LENGTH = x.xx FT. = x.xxx MILE
NET LENGTH = x.xx FT. = x.xxx MILE

STATE OF ILLINOIS
DEPARTMENT OF TRANSPORTATION

SUBMITTED November 19 20 29
[Signature]
REGIONAL ENGINEER

January 31 20 25
[Signature]
ENGINEER OF DESIGN AND ENVIRONMENT

January 31 20 25
[Signature]
DIRECTOR OF HIGHWAYS PROJECT IMPLEMENTATION

PRINTED BY THE AUTHORITY
OF THE STATE OF ILLINOIS

INDEX OF SHEETS

SHEET NO.	DESCRIPTION
1	COVER SHEET
2	INDEX OF SHEETS, GENERAL NOTES AND HIGHWAY STANDARDS
3 - 7	LOCATION MAPS
8	SUMMARY OF QUANTITIES
9 - 13	TYPICAL APPLICATION SECTIONS
14 - 21	PLAN SCHEDULES
22	DISTRICT 5 DETAIL - ROAD CLOSURES

GENERAL NOTES

G.N. – PAVEMENT MARKINGS AND MARKERS
 EXISTING PAVEMENT MARKINGS AND RAISED REFLECTIVE PAVEMENT MARKERS SHALL BE TEMPORARILY COVERED PRIOR TO APPLICATION OF THE DECK SURFACE TREATMENT, TO PREVENT THE MATERIAL FROM BEING APPLIED TO THE MARKINGS AND MARKERS. THE TEMPORARY COVERING SHALL BE REMOVED AFTER APPLICATION OF THE DECK SURFACE TREATMENT AND PRIOR TO OPENING TO TRAFFIC. COST IS INCLUDED WITH THE DECK SURFACE TREATMENT SPECIFIED.

NO COMMITMENTS

HIGHWAY STANDARDS

STANDARD NO.	DESCRIPTION
000001-08	STANDARD SYMBOLS, ABBREVIATIONS AND PATTERNS
001006	DECIMAL OF AN INCH AND OF A FOOT
701201-05	LANE CLOSURE, 2 LANE, 2 WAY, DAY ONLY
701411-09	LANE CLOSURE, MULTILANE, AT ENTRANCES OR EXIT RAMP
701426-09	LANE CLOSURE, MULTILANE, INTERMITTENT OR MOVING OPERATIONS FOR SPEEDS >= 45 MPH
701901-10	TRAFFIC CONTROL DEVICES

MODEL: Index Standards Gen. Notes (Sheet)
 FILE NAME: c:\p\work\evictol\brandenburg\09068617\0570G76_sht_genote.dgn

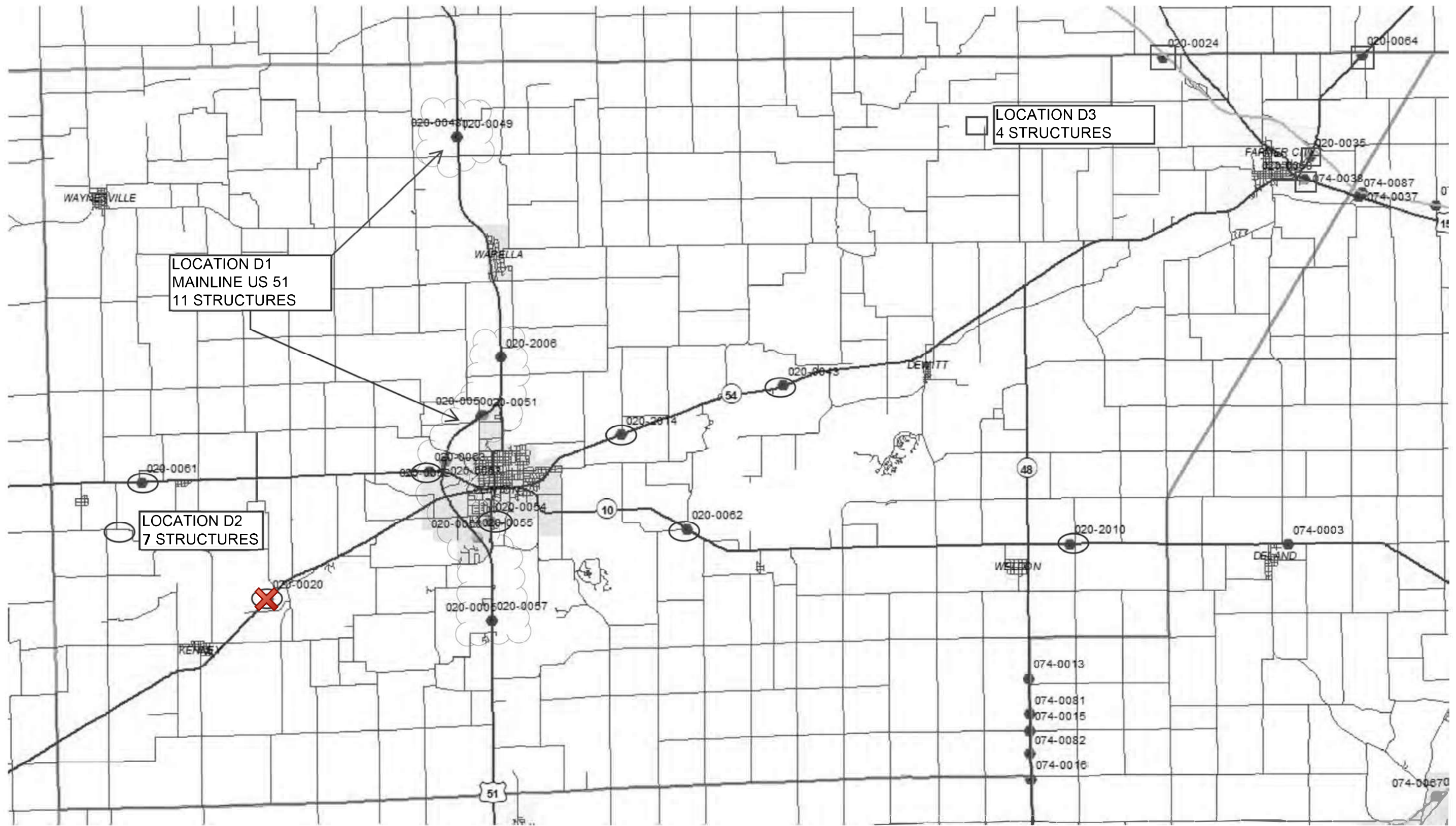
USER NAME = timothy.brandenburg	DESIGNED - TJB	REVISED -
	DRAWN -	REVISED -
	CHECKED -	REVISED -
PLOT DATE = 10/9/2024	DATE - 02/22/2024	REVISED -

**STATE OF ILLINOIS
 DEPARTMENT OF TRANSPORTATION**

INDEX OF SHEETS, GENERAL NOTES & HIGHWAY STANDARDS

SCALE: SHEET 1 OF 6 SHEETS STA. TO STA.

F.A. RTE.	SECTION	COUNTY	TOTAL SHEETS	SHEET NO.
VAR.	FY25 BRIDGE DECK SEALING	VARIOUS	22	2
			CONTRACT NO. 70G76	
		ILLINOIS FED. AID PROJECT		



MODEL: DeWitt Map (Sheet)
 FILE NAME: c:\pwworking\brandenburg\09686170570676_eht_maps.dgn

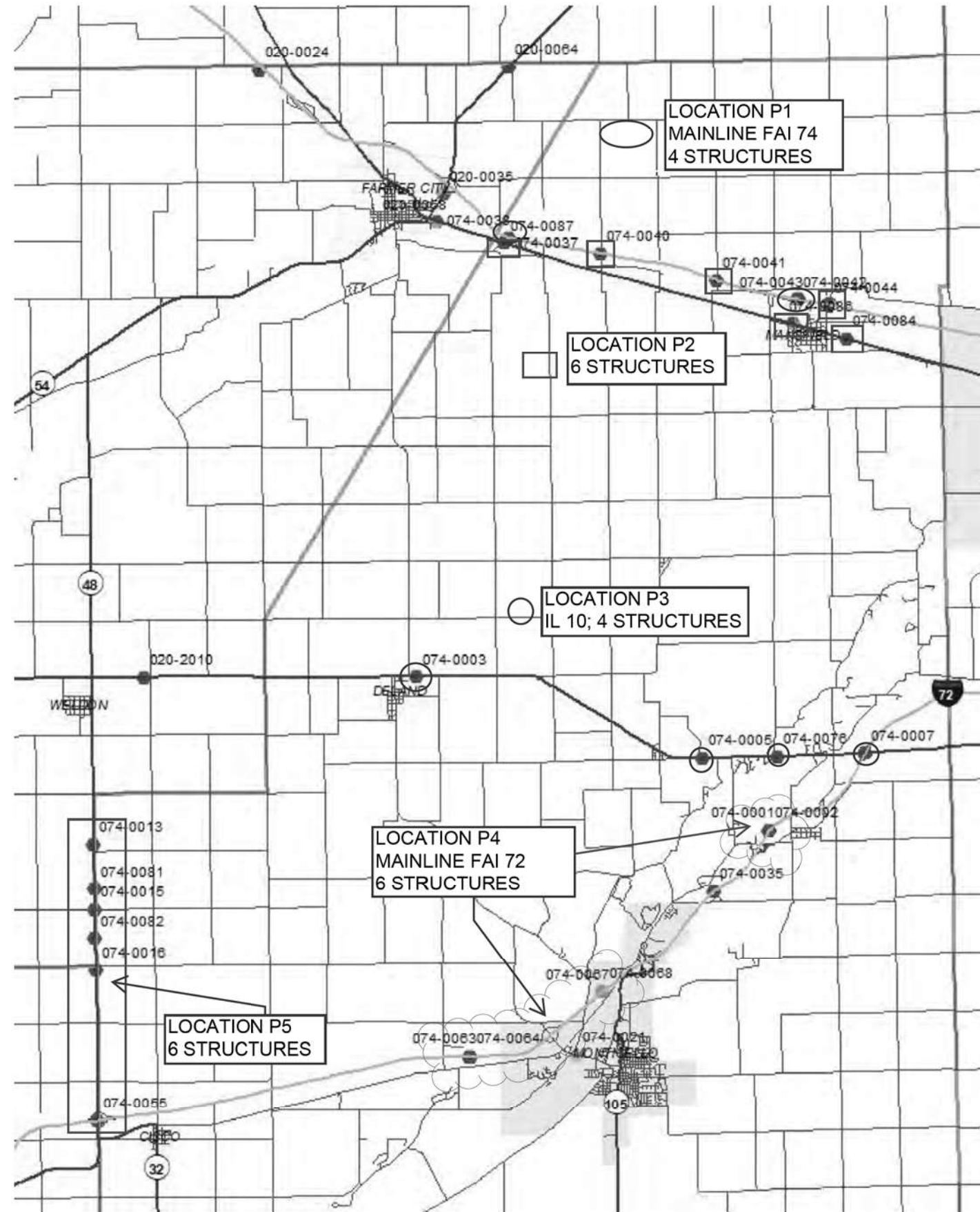
USER NAME = timothy.brandenburg	DESIGNED - TJB	REVISED -
	DRAWN -	REVISED -
	CHECKED -	REVISED -
PLOT DATE = 2/23/2024	DATE - 02/22/2024	REVISED -

STATE OF ILLINOIS
DEPARTMENT OF TRANSPORTATION

DEWITT COUNTY LOCATION MAP

SCALE: SHEET 1 OF 6 SHEETS STA. TO STA.

F.A. RTE.	SECTION	COUNTY	TOTAL SHEETS	SHEET NO.
VAR.	FY25 BRIDGE DECK SEALING	VARIOUS	22	3
			CONTRACT NO. 70G76	
ILLINOIS FED. AID PROJECT				



MODEL: Piatt Map North (Sheet)
 FILE NAME: c:\p\work\piatt\brandenburg\09686170570G76_sht_maps.dgn

USER NAME = timothy.brandenburg	DESIGNED - TJB	REVISED -
	DRAWN -	REVISED -
	CHECKED -	REVISED -
PLOT DATE = 2/23/2024	DATE - 02/22/2024	REVISED -

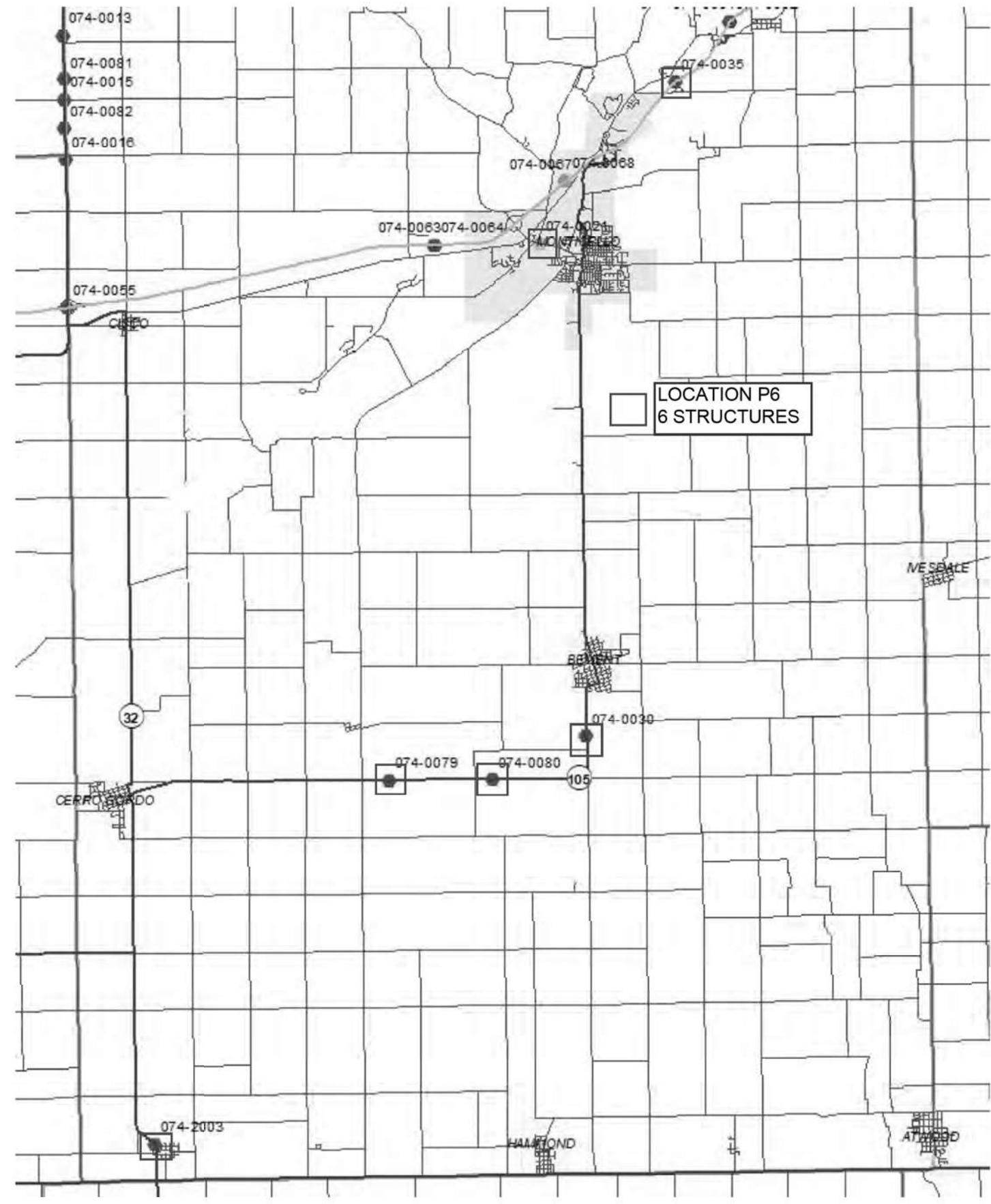
STATE OF ILLINOIS
DEPARTMENT OF TRANSPORTATION

PIATT COUNTY LOCATION MAP - NORTH

SCALE: SHEET 2 OF 6 SHEETS STA. TO STA.

F.A. RTE.	SECTION	COUNTY	TOTAL SHEETS	SHEET NO.
VAR.	FY25 BRIDGE DECK SEALING	VARIOUS	22	4
			CONTRACT NO. 70G76	
ILLINOIS FED. AID PROJECT				

MODEL: Piatt Map South (Sheet)
 FILE NAME: c:\p\work\brandenburg\09686170570G76_sht_maps.dgn



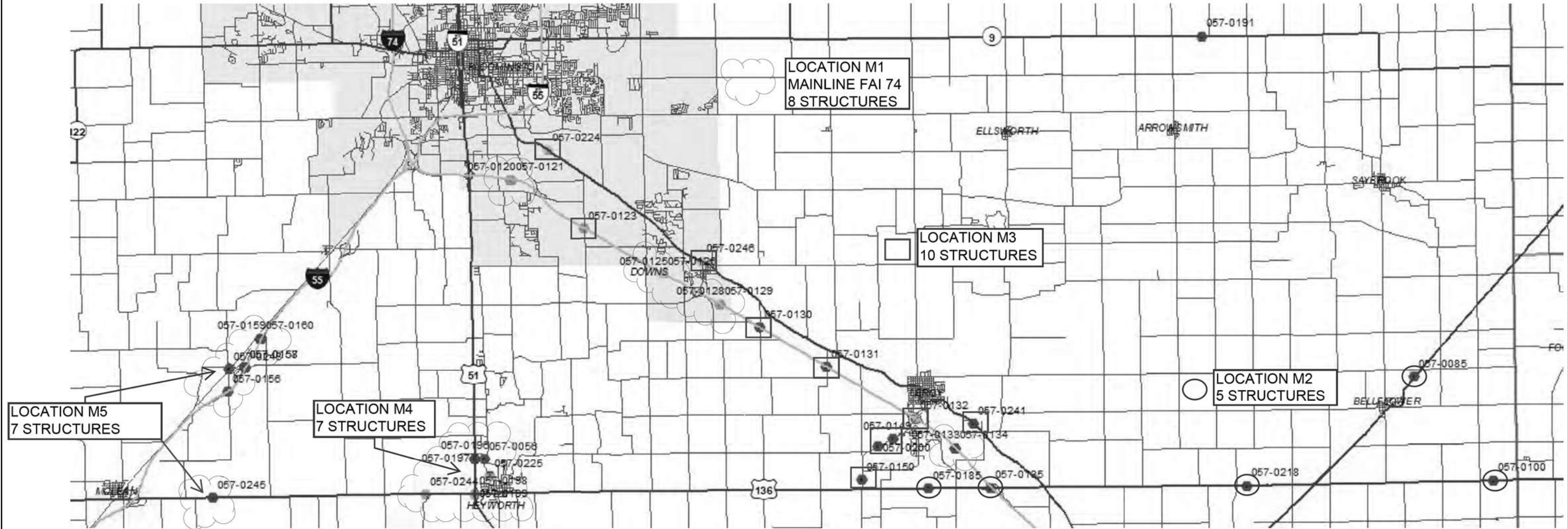
USER NAME = timothy.brandenburg	DESIGNED - TJB	REVISED -
	DRAWN -	REVISED -
	CHECKED -	REVISED -
PLOT DATE = 2/23/2024	DATE - 02/22/2024	REVISED -

**STATE OF ILLINOIS
 DEPARTMENT OF TRANSPORTATION**

PIATT COUNTY LOCATION MAP - SOUTH

SCALE: SHEET 3 OF 6 SHEETS STA. TO STA.

F.A. RTE.	SECTION	COUNTY	TOTAL SHEETS	SHEET NO.
VAR.	FY25 BRIDGE DECK SEALING	VARIOUS	22	5
CONTRACT NO. 70G76				
ILLINOIS FED. AID PROJECT				



MODEL: McLean Map South (Sheet)
 FILE NAME: c:\p\work\kwb\brandenburg\09686170570G76_sht_maps.dgn

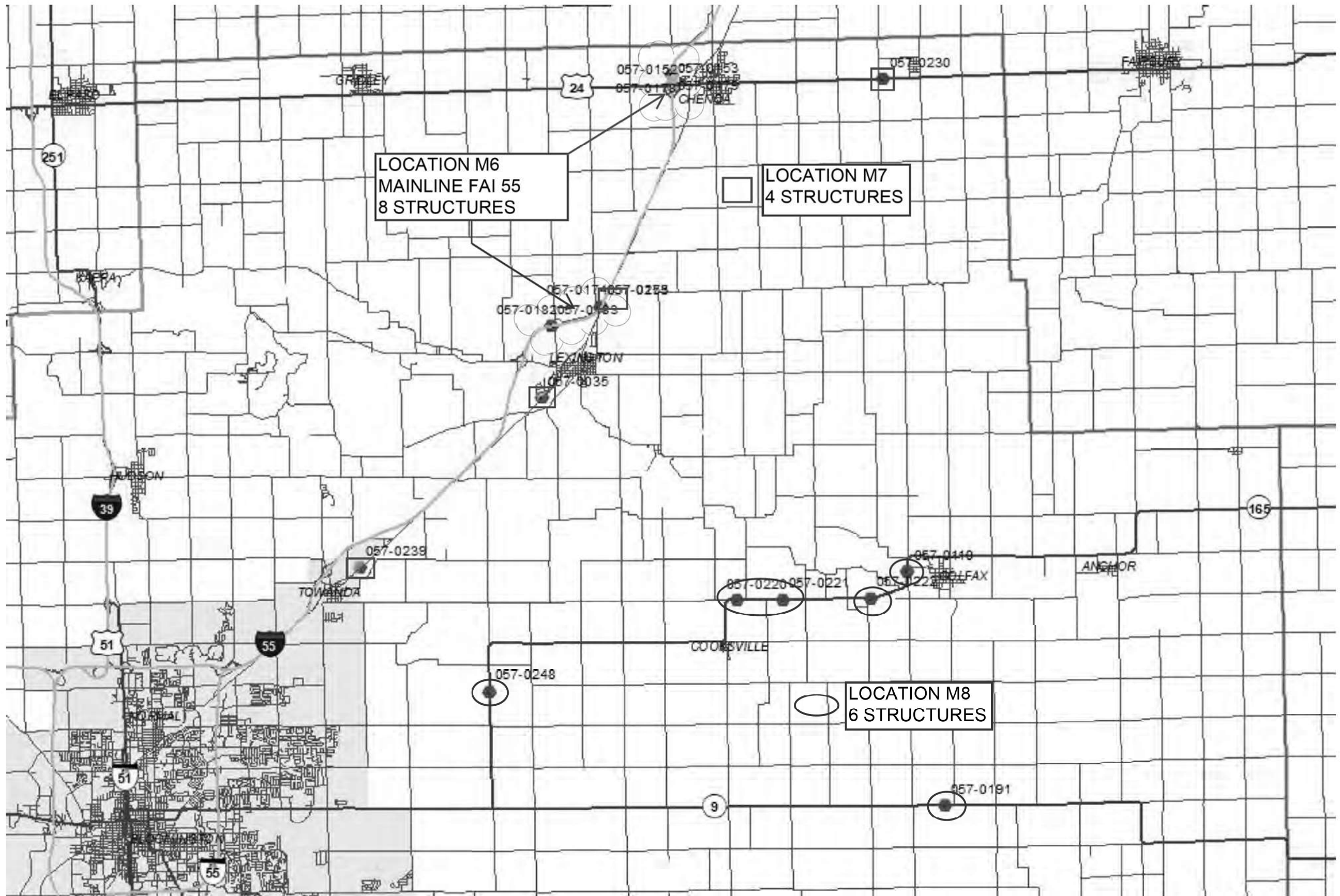
USER NAME = timothy.brandenburg	DESIGNED - TJB	REVISED -
	DRAWN -	REVISED -
	CHECKED -	REVISED -
PLOT DATE = 2/23/2024	DATE - 2/22/2024	REVISED -

STATE OF ILLINOIS
DEPARTMENT OF TRANSPORTATION

MCLEAN COUNTY LOCATION MAP - SOUTH

SCALE: SHEET 4 OF 6 SHEETS STA. TO STA.

F.A. RTE.	SECTION	COUNTY	TOTAL SHEETS	SHEET NO.
VAR.	FY25 BRIDGE DECK SEALING	VARIOUS	22	6
CONTRACT NO. 70G76				
ILLINOIS FED. AID PROJECT				



MODEL: McLean Area North (Sheet)
 FILE NAME: c:\p\work\w\brandenburg\09686170570G76_sht_maps.dgn

USER NAME = timothy.brandenburg	DESIGNED - TJB	REVISED -
	DRAWN -	REVISED -
	CHECKED -	REVISED -
PLOT DATE = 2/23/2024	DATE - 2/22/2024	REVISED -

STATE OF ILLINOIS
DEPARTMENT OF TRANSPORTATION

MCLEAN COUNTY LOCATION MAP - NORTH

SCALE: SHEET 5 OF 6 SHEETS STA. TO STA.

F.A. RTE.	SECTION	COUNTY	TOTAL SHEETS	SHEET NO.
VAR.	FY25 BRIDGE DECK SEALING	VARIOUS	22	7
			CONTRACT NO. 70G76	
ILLINOIS FED. AID PROJECT				

			LOCATION OF WORK:	VARIOUS ROUTES										
				FY2025 BRIDGE DECK SEALING										
				INTERSTATE, MULTI-LANE AND TWO-LANE HIGHWAYS										
			FUNDING BREAKOUT:	100% STATE										
			CONSTRUCTION TYPE CODE:	BRIDGE PRESERVATION - 0047										
				DEWITT COUNTY			PIATT COUNTY				MCLEAN COUNTY			
				RURAL / NON-MPO	URBAN / MPO	RURAL / NON-MPO		URBAN / MPO		RURAL / NON-MPO		URBAN / MPO		
				NON-INTERSTATE		INTERSTATE	NON-INTERSTATE	INTERSTATE	NON-INTERSTATE	INTERSTATE	NON-INTERSTATE	INTERSTATE	NON-INTERSTATE	
			TOTAL	PPS - 3000	PPS - 4000	PPS - 1000	PPS - 3000	PPS - 2000	PPS - 4000	PPS - 1000	PPS - 3000	PPS - 2000	PPS - 4000	
<u>CODE NO</u>	<u>ITEM</u>	<u>UNIT</u>	<u>QUANTITY</u>	<u>QUANTITY</u>	<u>QUANTITY</u>	<u>QUANTITY</u>	<u>QUANTITY</u>	<u>QUANTITY</u>	<u>QUANTITY</u>	<u>QUANTITY</u>	<u>QUANTITY</u>	<u>QUANTITY</u>	<u>QUANTITY</u>	
67100100	MOBILIZATION	L SUM	1.0	0.1	0.1	0.1	0.1	0.1	0.1	0.1	0.1	0.1	0.1	
70100420	TRAFFIC CONTROL AND PROTECTION, STANDARD 701411	EACH	6.0	0.0	0.0	2.0	0.0	0.0	0.0	4.0	0.0	0.0	0.0	
70100450	TRAFFIC CONTROL AND PROTECTION, STANDARD 701201	L SUM	1.0	0.2	0.1	0.0	0.3	0.0	0.0	0.0	0.3	0.0	0.1	
70107025	CHANGEABLE MESSAGE SIGN	CAL DA	98.0	0.0	14.0	28.0	0.0	0.0	0.0	28.0	14.0	14.0	0.0	
X5870015	BRIDGE DECK CONCRETE SEALER	SQ FT	1,006,524.0	122,263.0	68,108.0	68,420.0	161,537.0	66,848.0	25,946.0	146,773.0	258,781.0	56,488.0	31,360.0	
			NO SPECIALTY ITEMS											

MODEL: SOQ (Sheet)
FILE NAME: c:\pw\work\wibolbrandenburg\090686170570G76_shl_soq.dgn

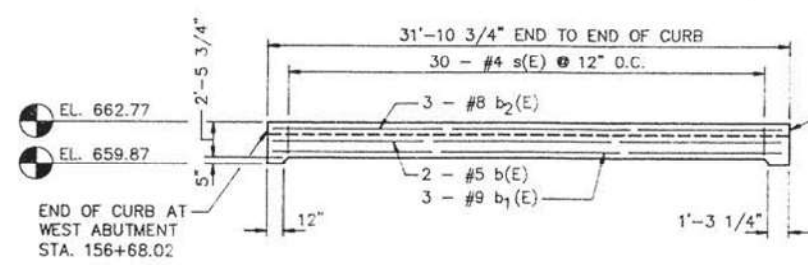
USER NAME	= timothy.brandenburg	DESIGNED	- TJB	REVISED	-
		DRAWN	-	REVISED	-
		CHECKED	-	REVISED	-
PLOT DATE	= 10/2/2024	DATE	= 02/22/2024	REVISED	-

STATE OF ILLINOIS
DEPARTMENT OF TRANSPORTATION

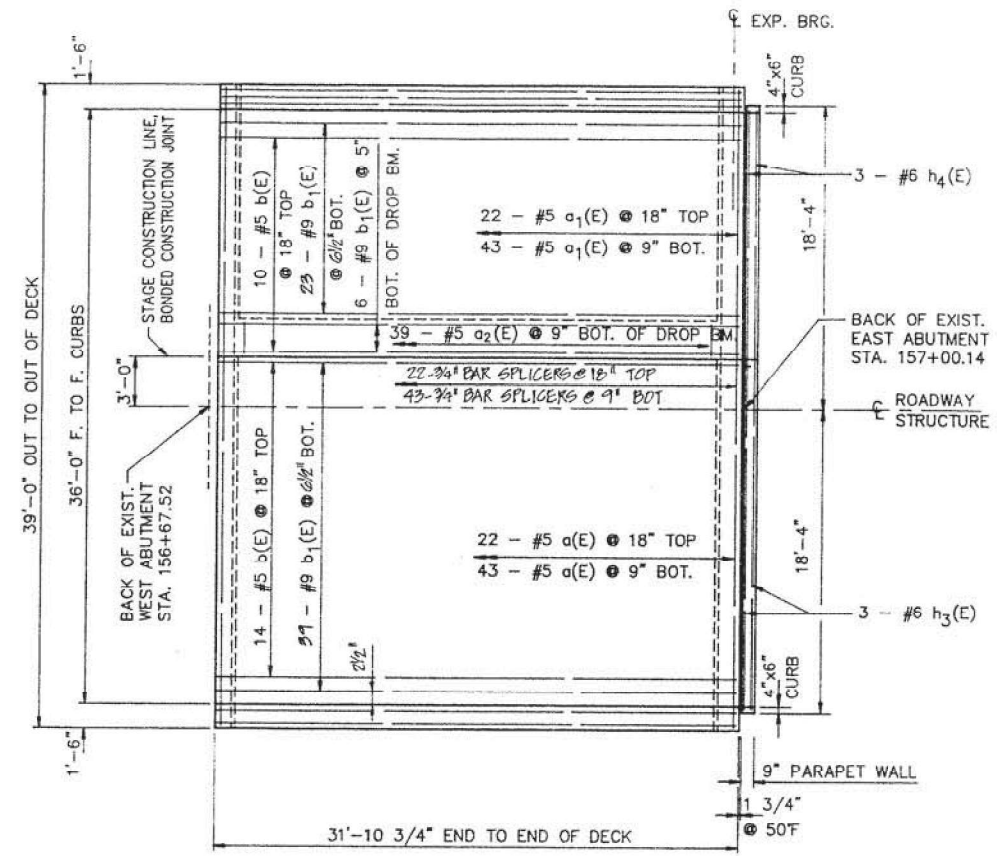
SUMMARY OF QUANTITIES							
SCALE:	SHEET 1	OF 1	SHEETS	STA.	TO STA.		

F.A.P RTE.	SECTION	COUNTY	TOTAL SHEETS	SHEET NO.
VAR.	FY25 BRIDGE DECK SEALING	VARIOUS	22	8
CONTRACT NO. 70G76				
		ILLINOIS	FED. AID PROJECT	

F.A.P. RTE.	SECTION	COUNTY	TOTAL SHEETS	SHEET NO.
79	143 BR-3	DOUGLAS	19	13
F.H.W.A. REG.	ILLINOIS	PROJECT		



ELEVATION OF CURB BEAM
(DIMENSIONS • OUTSIDE EDGE)



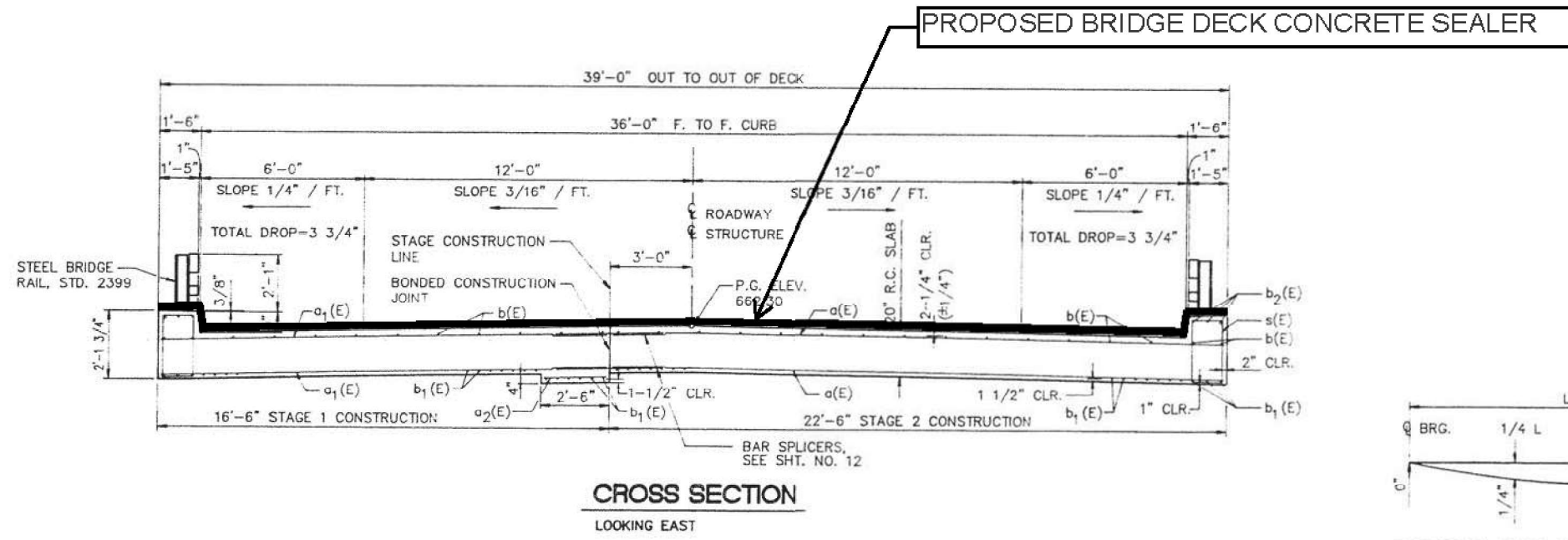
PLAN

BILL OF MATERIALS SUPERSTRUCTURE

BAR	SIZE	NO. REQ'D	LENGTH	SHAPE
a(E)	#5	67	22'-2"	—
a1(E)	#5	67	16'-2"	—
a2(E)	#5	39	2'-2"	—
a3(E)	#6	6	22'-2"	—
a4(E)	#6	6	16'-2"	—
b(E)	#5	28	31'-7"	—
b1(E)	#9	74	31'-7"	—
b2(E)	#8	6	31'-7"	—
h3(E)	#6	3	21'-0"	—
h4(E)	#6	3	15'-0"	—
s(E)	#4	60	6'-5"	□
s1(E)	#4	42	6'-1"	□
s2(E)	#4	42	5'-2"	□

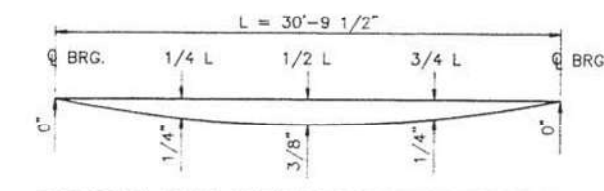
ITEM	UNIT	QUANTITY
PREFORMED JOINT SEAL 2-1/2"	LIN. FT	39
CLASS "X" CONCRETE SUPERSTRUCTURE	CU. YD.	84.0
PROTECTIVE COAT	SQ. YD.	22
ELASTOMERIC BEARING ASSEMBLY TYPE I	EACH	7
FURNISHING AND ERECTING STRUCTURAL STEEL	POUND	1822
REINFORCEMENT BARS, EPOXY COATED	POUND	13,220

REINFORCEMENT BARS DESIGNATED (E) SHALL BE EPOXY COATED. SEE SHT. NO. 14 FOR BAR BENDING DETAILS.
• SEE SHT. NO. 17 FOR ADDITIONAL PARAPET WALL DETAILS.



CROSS SECTION
LOOKING EAST

TYPICAL SECTION; TWO-LANE TWO-WAY WITH CURB



DEAD LOAD DEFLECTION DIAGRAM

SUPERSTRUCTURE

U.S. 36 over Dry Fork Creek
F.A.P. RTE. 79 Section 143 BR-3
Douglas County
Sta. 156+84
Structure Number 021-0017

Drawn: EWING
Date: 4/30/90
REV. 5/90
Project No. 16169002

UPCHURCH AND ASSOCIATES
engineers architects surveyors
MATTOON, IL. 235-3177

MODEL: 2 Lane 2 Way with Curb (Sheet)
FILE NAME: c:\paw\work\brandonburg\10570376_sht_typical.sgn

USER NAME = timothy.brandenburg	DESIGNED - TJB	REVISED -
	DRAWN -	REVISED -
	CHECKED -	REVISED -
PLOT DATE = 2/23/2024	DATE - 2/22/2024	REVISED -

STATE OF ILLINOIS
DEPARTMENT OF TRANSPORTATION

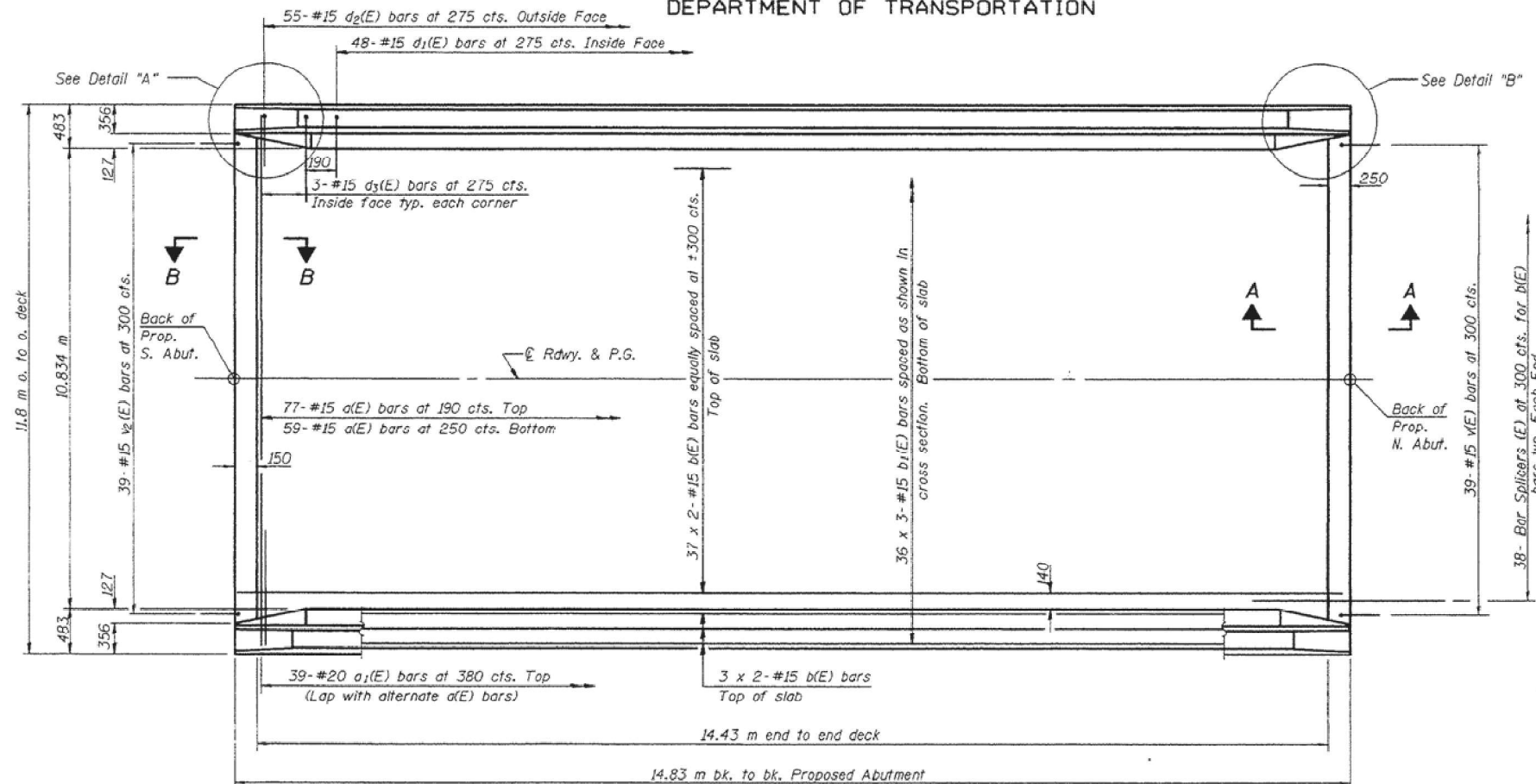
TYPICAL SECTIONS

SCALE: SHEET 1 OF 5 SHEETS STA. TO STA.

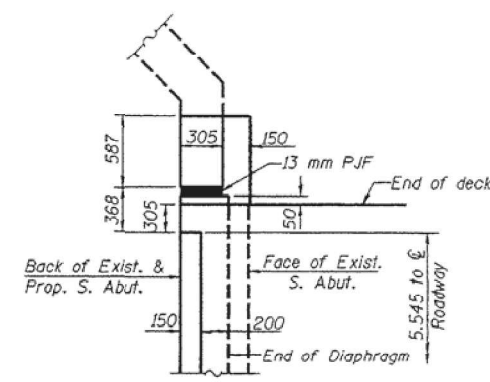
F.A. RTE.	SECTION	COUNTY	TOTAL SHEETS	SHEET NO.
VAR.	FY25 BRIDGE DECK SEALING	VARIOUS	22	9
CONTRACT NO. 70G76				
ILLINOIS FED. AID PROJECT				

STATE OF ILLINOIS
DEPARTMENT OF TRANSPORTATION

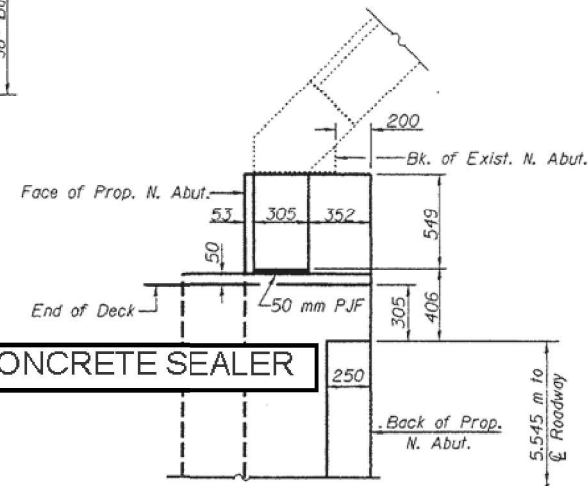
ROUTE NO.	SECTION	COUNTY	TOTAL SHEETS	SHEET NO.
F.A.S. RTE.	SEC. 22BR-1	DOUGLAS	11	13
PROJECT NO. 021-0011				90948



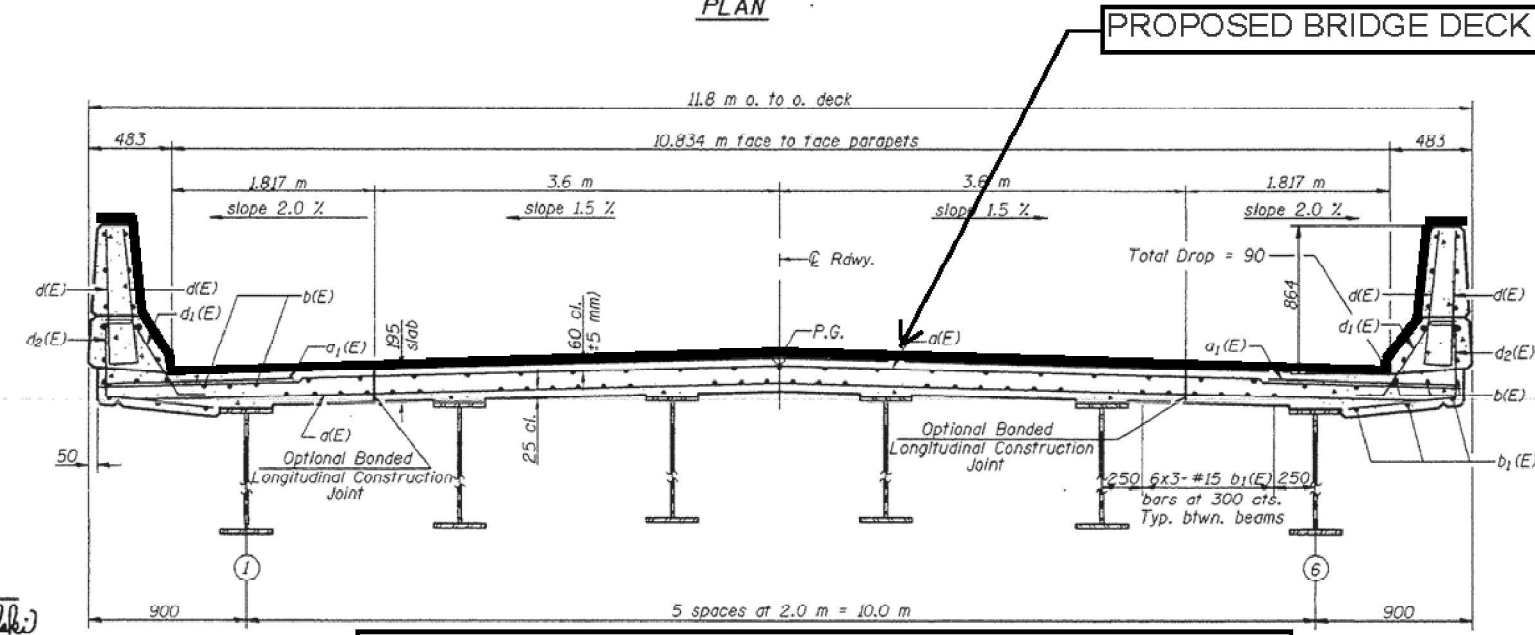
PLAN



DETAIL "A"
Parapet and Approach not shown.



DETAIL "B"
Parapet and Approach not shown.



TYPICAL SECTION; TWO-LANE TWO-WAY WITH PARAPET

CROSS SECTION
(Looking North)

MIN. BAR LAPS
#15 bars = 640

Notes: See Sheet 4 of 13 for superstructure details and Bill of Material.
Reinforcement bars designated (E) shall be epoxy coated.
Bars indicated thus 1 x 3-#15 etc. indicates 1 line of bars with 3 lengths per line.
See Sheet 4 of 13 for parapet reinforcement.
All dimensions are in millimeters (mm) except as noted.
See sheet 12 of 13 for bar splicer details.

SUPERSTRUCTURE
F.A.S. RTE. 1671 SEC. 22BR-1
DOUGLAS COUNTY
STATION 22+618.644
STRUCTURE NO. 021-0011

DESIGNED Jonas H. Petty	January 30 2024
CHECKED Mark D. Shaffer	EXAMINED Thomas J. Donagale
DRAWN R. Sommer	PASSED Ralph E. Anderson
CHECKED J.D.P./M.D.S.	

MODEL: 2 Lane 2 Way with Parapet (Sheet)
FILE NAME: c:\paw\work\brandonburg\090686170570G76_sht_typicalb.dgn

USER NAME = timothy.brandenburg	DESIGNED - TJB	REVISED -
	DRAWN -	REVISED -
	CHECKED -	REVISED -
PLOT DATE = 2/23/2024	DATE - 02/22/2024	REVISED -

STATE OF ILLINOIS
DEPARTMENT OF TRANSPORTATION

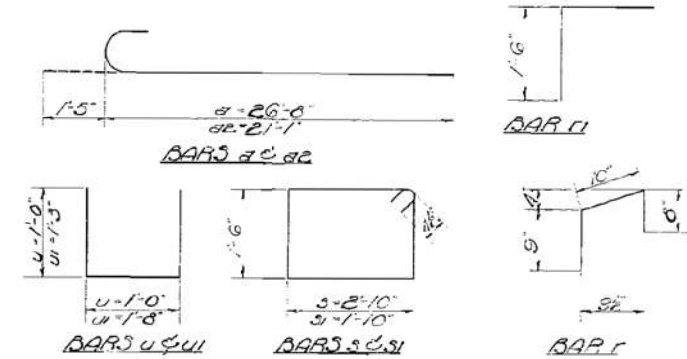
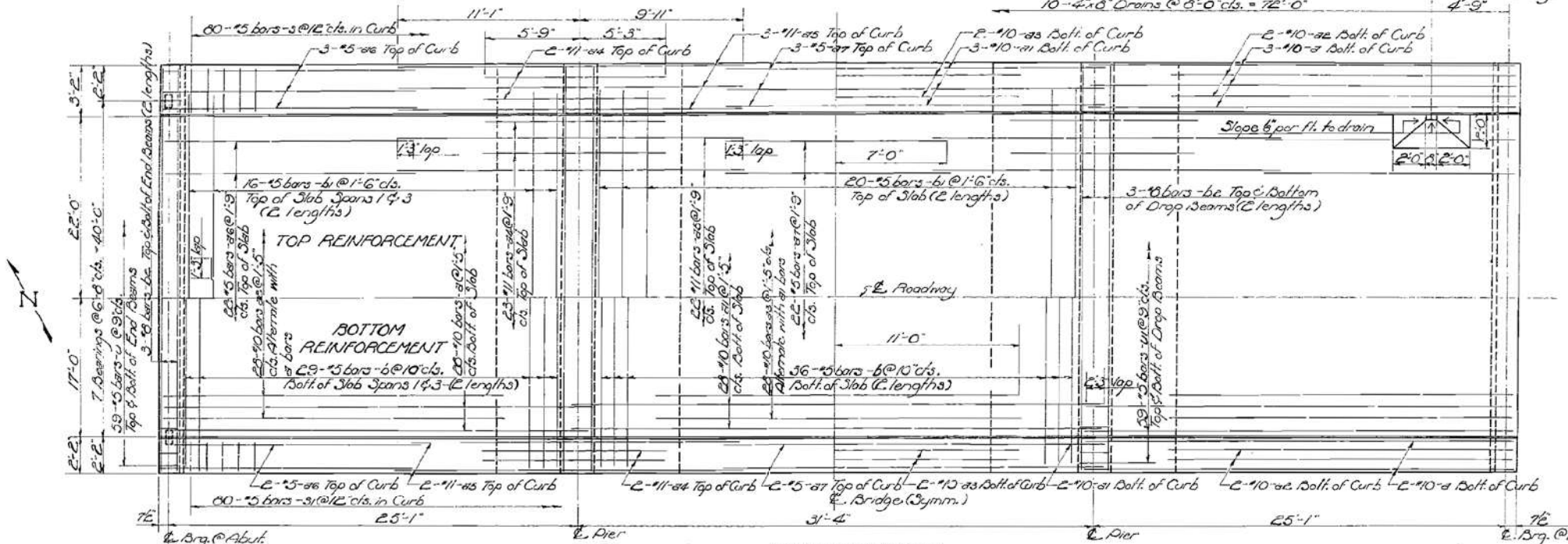
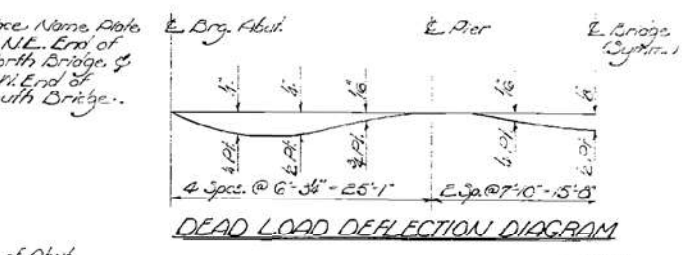
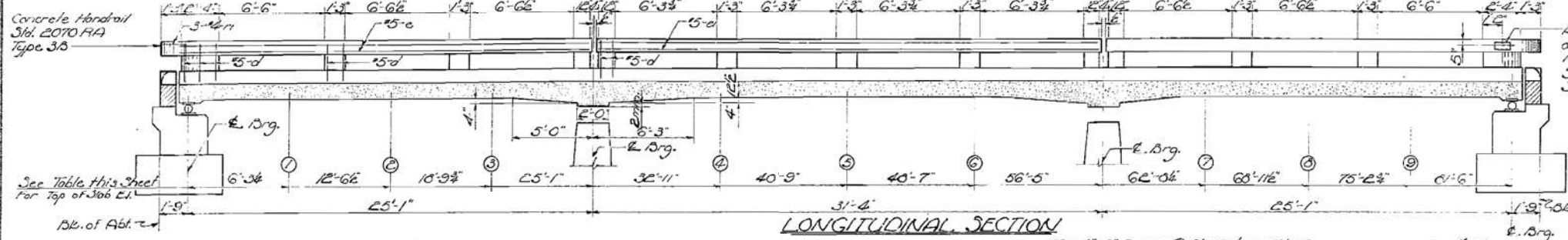
TYPICAL SECTIONS

SCALE: SHEET 2 OF 5 SHEETS STA. TO STA.

F.A. RTE.	SECTION	COUNTY	TOTAL SHEETS	SHEET NO.
VAR.	FY25 BRIDGE DECK SEALING	VARIOUS	22	10
CONTRACT NO. 70G76				
ILLINOIS FED. AID PROJECT				

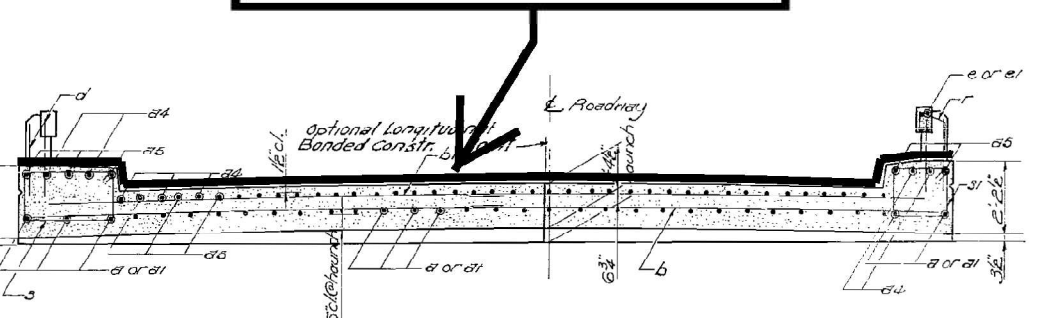
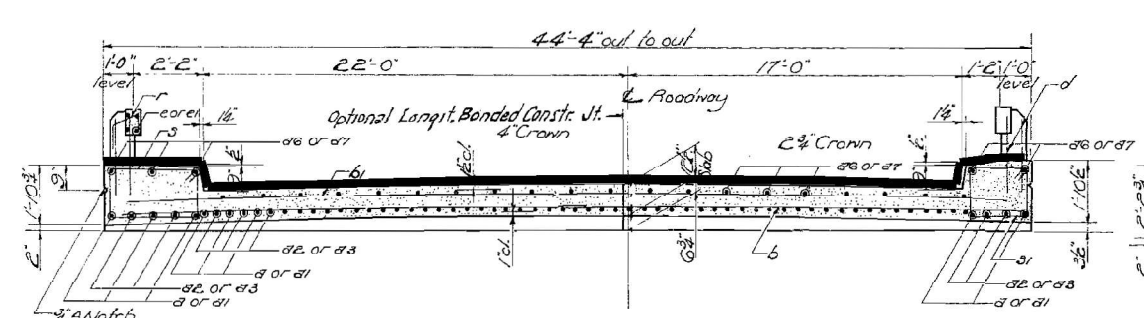
STATE OF ILLINOIS
DEPARTMENT OF PUBLIC WORKS & BUILDINGS
DIVISION OF HIGHWAYS

ROUTE NO.	SECTION	COUNTY	TOTAL SHEETS	SHEET NO.	SHEET NO. 2
F.A.R.T. 74	57-17B	MCLEAN	19	6	6 SHEETS
PROJECT: ILLINOIS FED. AID PROJECT					



BILL OF MATERIAL - P. BRIDGES

Bar No.	No.	Size	Length	Spaced
9	132	#10	22'-1"	
11	66	#10	33'-6"	
22	122	#10	22'-2"	
23	64	#10	22'-0"	
24	108	#11	11'-0"	
25	108	#11	21'-0"	
26	108	#5	15'-9"	
27	54	#5	14'-0"	
6	376	#5	22'-3"	
41	200	#5	21'-6"	
62	86	#6	23'-0"	
3	160	#5	9'-5"	□
51	160	#5	7'-5"	□
4	472	#5	3'-0"	U
41	472	#5	4'-2"	U
d	216	#5	2'-0"	
e	32	#5	25'-6"	
e1	16	#5	31'-0"	
f	112	#4	2'-3"	
f1	84	#4	3'-0"	
Class X Concrete	Cu. Yds.	334.1		
Handrail Concrete	Cu. Yds.	6.0		
Reinforcement Bars	Lbs.	92,530		
Structural Steel	Lbs.	20,040		
Name Plates	Each	6		



TYPICAL SECTION; FOUR-LANE WITH CURB; DUAL STRUCTURES

ROADWAY NORTH & SOUTH LANES

Location	E. P. 1	(1)	(2)	(3)	E. Pier 1	(4)	(5)	(6)	E. Pier 2	(7)	(8)	(9)	E. P. 2	(10)
Theoretical Elevation	755.75	755.78	755.81	755.85	755.88	755.93	755.97	756.02	756.07	756.10	756.14	756.18	756.22	
Theoretical C.L. H.D. Defl.	755.75	755.80	755.83	755.86	755.88	755.93	755.98	756.02	756.07	756.11	756.16	756.20	756.22	

SUPERSTRUCTURE
F.A.R.T. 74 - SEC. 57-17B
MCLEAN COUNTY
STA. 1512 +64

DESIGNED: Joseph W. Gammie
CHECKED: C. W. Shick
DRAWN: R. W. L. M. Jacobs
CHECKED: C. W. S.

APR 13 1961
EXAMINED: R. E. Bauman
PASSED: E. H. ...
APPROVED: R. R. ...

STATE OF ILLINOIS
DEPARTMENT OF TRANSPORTATION

TYPICAL SECTIONS

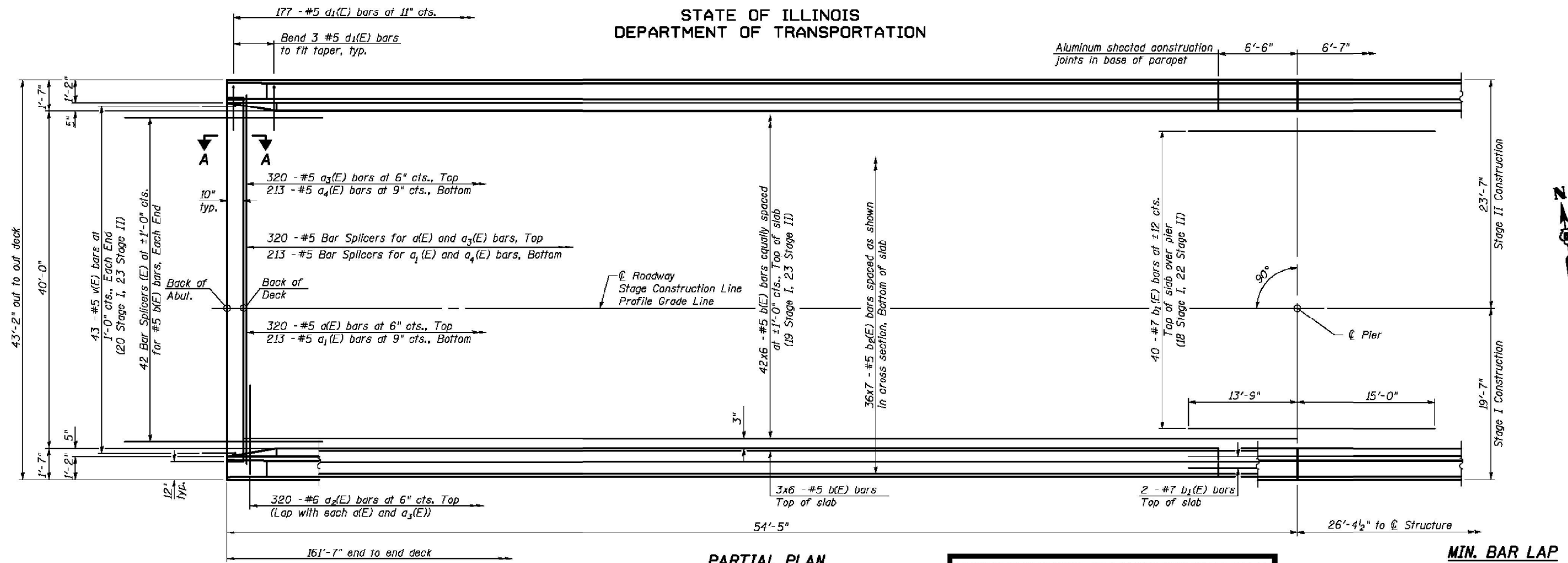
USER NAME = timothy.brandenburg	DESIGNED - TJB	REVISED -
	DRAWN -	REVISED -
	CHECKED -	REVISED -
PLOT DATE = 2/23/2024	DATE = 02/22/2024	REVISED -

SCALE:	SHEET 3	OF 5 SHEETS	STA.	TO STA.
F.A. RTE.	SECTION	COUNTY	TOTAL SHEETS	SHEET NO.
VAR.	FY25 BRIDGE DECK SEALING	VARIOUS	22	11
CONTRACT NO. 70G76				
ILLINOIS FED. AID PROJECT				

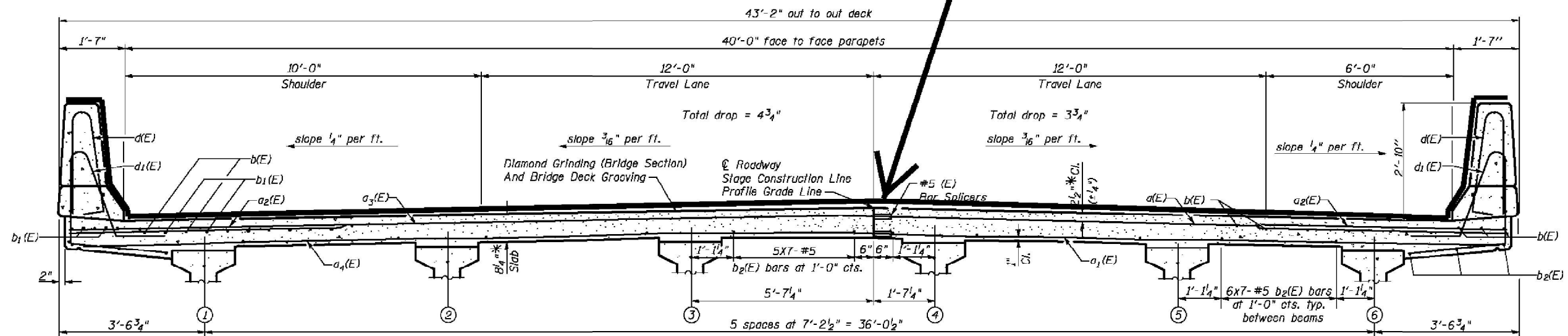
MODEL: 4 Lane with Curb (Sheet)
FILE NAME: c:\pw\work\brandenburg\09686170570G76_sht_typical6.dgn

Added Long. Banded Constr. Joint. B.D. 12/12/62.

STATE OF ILLINOIS
DEPARTMENT OF TRANSPORTATION



PARTIAL PLAN



CROSS SECTION
(Looking Upstation Westbound)
(Looking Downstation Eastbound)

PROPOSED BRIDGE DECK CONCRETE SEALER

MIN. BAR LAP
#5 Bar = 1'-8"

NEAR PIER

NEAR MIDSPAN

SUPERSTRUCTURE
I-74 OVER LITTLE KICKAPOO CREEK
STRUCTURE NO. 057-0120
AND 057-0121

STRAND ASSOCIATES, INC.

DESIGNED	RRD
CHECKED	AJS
DRAWN	KAS
CHECKED	JAR

Notes:
See Sheet 12 of 27 for superstructure details and Bill of Material.
Bars indicated thus 20 x 3-#5 etc. indicates 20 lines of bars with 3 lengths per line.
See Sheet 12 of 27 for parapet reinforcement.
See Sheet 27 of 27 for bar splicers details.
See Sheet 11 of 27 for diaphragm details.

* Prior to grinding

SHEET NO. 10 27 SHEETS	F.A.I. RTE.	SECTION	COUNTY	TOTAL SHEETS	SHEET NO.
	74	(57-21B)BR	MCLEAN	61	22
SUPERSTRUCTURE DETAILS (1 OF 3)			CONTRACT NO. 70641		
FED. ROAD DIST. NO. 7 ILLINOIS FED. AID PROJECT					

MODEL: 4 Lane with Parapet (Sheet)
FILE NAME: c:\p\work\170570G76_sht_typical.sgn

USER NAME = timothy.brandenburg	DESIGNED - TJB	REVISED -
	DRAWN -	REVISED -
	CHECKED -	REVISED -
PLOT DATE = 2/23/2024	DATE - 02/22/2024	REVISED -

STATE OF ILLINOIS
DEPARTMENT OF TRANSPORTATION

TYPICAL SECTIONS

SCALE: SHEET 4 OF 5 SHEETS STA. TO STA.

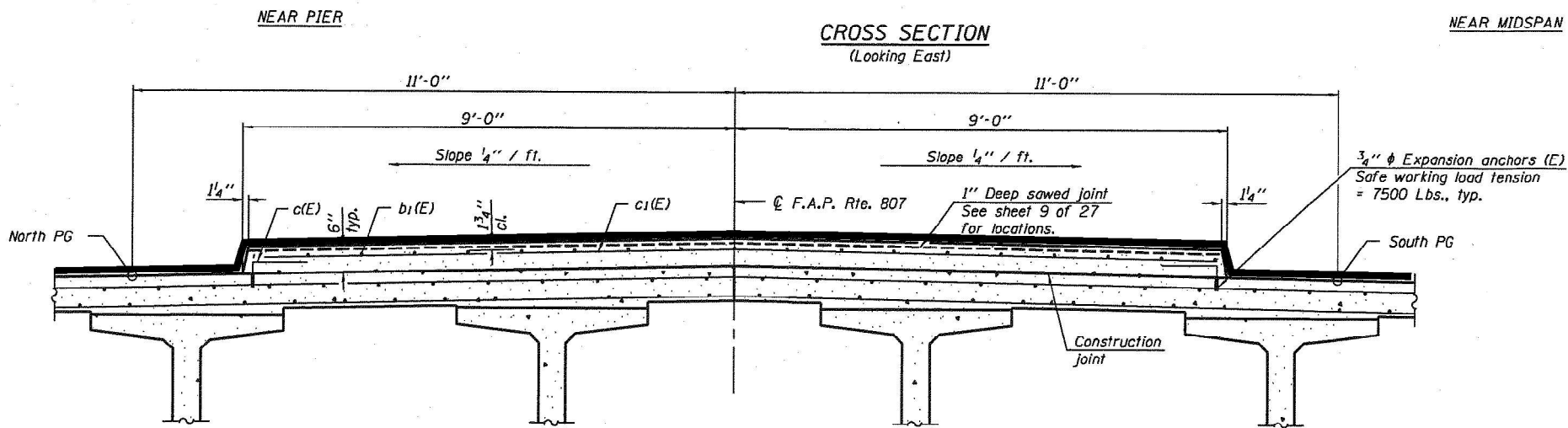
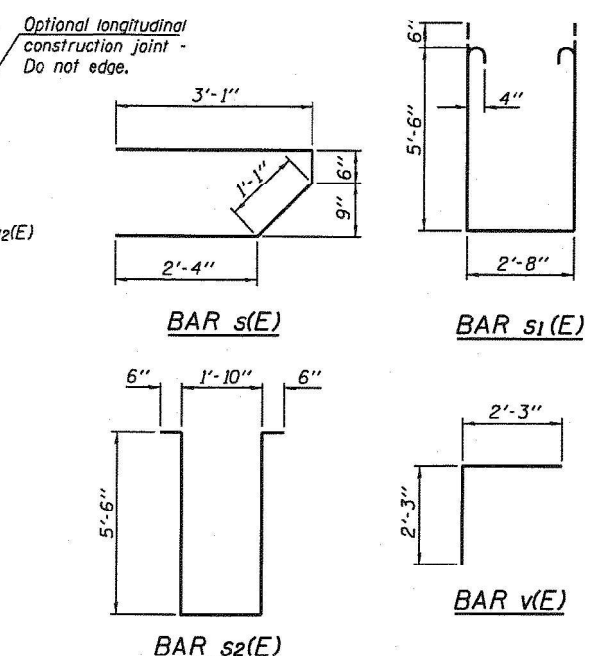
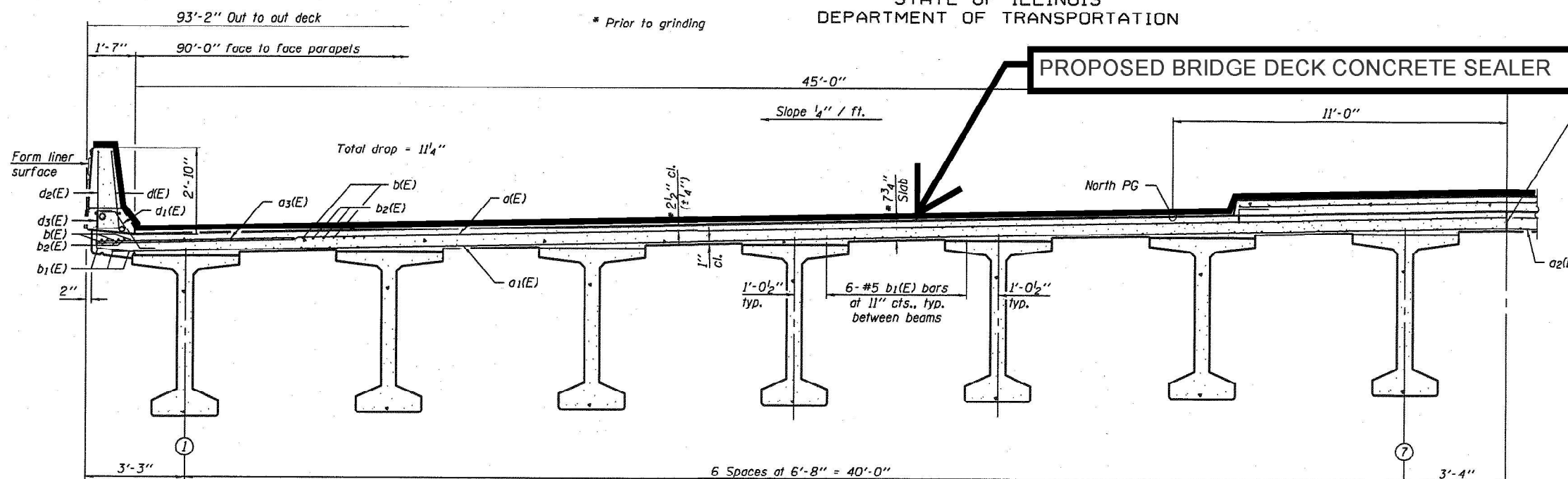
F.A. RTE.	SECTION	COUNTY	TOTAL SHEETS	SHEET NO.
VAR. FY25 BRIDGE DECK SEALING	VARIOUS	ILLINOIS	22	12
CONTRACT NO. 70G76				

STATE OF ILLINOIS
DEPARTMENT OF TRANSPORTATION

ROUTE NO.	SECTION	COUNTY	SHEETS	SHEET NO.
F.A.I. 57	10-32HB-3,K	CHAMPAIGN	352	119
FED. ROAD DIST. NO. 7		S.L. NUMBER	REG. AND PRELIMINARY	

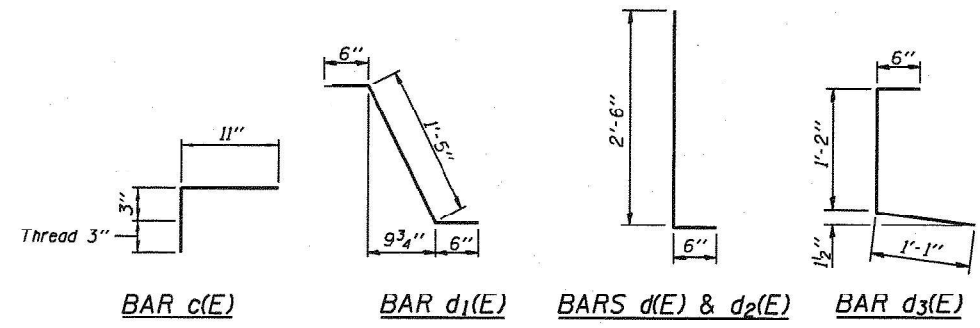
Contract #90758

SHEET NO. 10
27 SHEETS

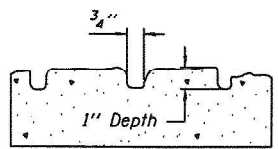
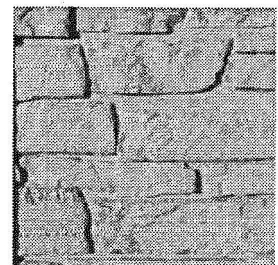


TYPICAL SECTION WITH MEDIAN

SECTION THRU MEDIAN
(Looking East)



Notes:
See sheet 11 of 27 for additional superstructure details and Bill of Material.
For diaphragm details, see sheets 12 and 13 of 27.
Reinforcement bars designated (E) shall be epoxy coated.
Bars indicated thus 20 x 3-#5 etc. indicates 20 lines of bars with 3 lengths per line.
See sheet 11 of 27 for parapet reinforcement.
Limestone Form Liner Textured Surface to be used on outside face of parapet. Utilize Teflon Dry Stack (Scott system #189) or equivalent.
The depth of relief of the Form Liner Textured Surface is limited to 1". The relief should not compromise the reinforcement clearance in the parapet.
Cost of expansion anchors (E) included in the cost of Reinforcement Bars, Epoxy Coated.



**FORM LINER
TEXTURE DETAIL**
See Special Provisions.

SUPERSTRUCTURE DETAILS
F.A.I. ROUTE 57 SEC. 10-32HB-3,K
CHAMPAIGN COUNTY
STATION 297+20.45
STRUCTURE NO. 010-0272

DESIGNED Gholam R. Ahanchi	APPROVED April 28, 2006
CHECKED Rebecca L. Thorp	EXAMINED Thomas J. Demagala
DRAWN Michael B. Mossman	PASSED Ralph E. Anderson
CHECKED G.R.A. / R.L.T.	

USER NAME = timothy.brandenburg	DESIGNED - TJB	REVISED -
	DRAWN -	REVISED -
	CHECKED -	REVISED -
PLOT DATE = 2/23/2024	DATE - 02/22/2024	REVISED -

STATE OF ILLINOIS
DEPARTMENT OF TRANSPORTATION

TYPICAL SECTIONS

SCALE: SHEET 5 OF 5 SHEETS STA. TO STA.

F.A. RTE.	SECTION	COUNTY	TOTAL SHEETS	SHEET NO.
VAR.	FY25 BRIDGE DECK SEALING	VARIOUS	22	13
CONTRACT NO. 70G76				
ILLINOIS FED. AID PROJECT				

MODEL: Typical Section with Median (Sheet)
FILE NAME: c:\p\work\1010\brandenburg\1010\90758\1010\typical_s.dgn

DEWITT COUNTY STRUCTURES SCHEDULE OF QUANTITIES																												
ACTUAL MEASUREMENTS																												
SN	ROUTE CARRIED	FEATURE CROSSED	DECK			APPROACH SLABS						PARAPETS (HUB, FACE & TOP)				TYPE B CURB (FACE & TOP)			TOTAL (SQ FT)	RURAL	URBAN	FIELD MEASURED	INTERSTATE MPO	INTERSTATE NON-MPO	NON-INTERSTATE MPO	NON-INTERSTATE NON-MPO		
			LENGTH (E-E)	WIDTH (F-F)	AREA (SQ FT)	LENGTH (FT)	DIMENSIONS INSIDE PARAPET / CURB		DIMENSIONS BEYOND PARAPET / CURB		AREA (SQ FT)	HEIGHT 3.6 FT TYPICAL	LENGTH (FT)		AREA (SQ FT)	HEIGHT 9 INCH TYPICAL	LENGTH ALONG APPR.	AREA (SQ FT)					PPS-2000	PPS-1000	PPS-4000	PPS-3000		
							LENGTH	WIDTH	LENGTH	WIDTH			ALONG DECK	ALONG APPR.														
020-0005	US 51 (SB)(FAP 322)	SALT CREEK	306.5	40.0	12260.0	30.0	11.5	40.0	18.5	24.0	1808.0	3.60	306.5	11.5	2372.4	0.75	4.5	13.5	16454.0	X		YES				X		
020-0020	IL 54 (FAP 71)	SALT CREEK	389.6	32.0	12467.2	21.0	0	32.0	21.0	33.2	1394.4	3.60	389.6	0.0	2805.1	0.75	20.0	60.0	0.0	X	-	YES				X		
020-0024	TR 5 RELOCATED	I-74	256.5	26.5	6797.3	20.0	0	26.5	20.0	33.2	1328.0	3.80	256.5	0.0	1949.4	0.00	20.0	0.0	10075.0	X						X		
020-0035	IL 54 (FAP 71)	TRIB TO SALT CREEK	107.5	65.0	6987.5	30.0	13.5	65.0	16.5	66.2	3939.6	3.60	107.5	13.5	968.4	0.75	16.5	49.5	11945.0	X						X		
020-0043	FAP 71 (IL 54)	N FORK SALT CREEK	235.2	42.5	9996.0	0.0	0.0	0.0	0.0	0.0	0.0	3.60	235.2	13.5	1887.8	0.00	0.0	0.0	11884.0	X						X		
020-0048	US 51 (SB)(FAP 322)	LONG POINT CREEK	149.8	40.0	5992.0	20.0	20	16.0	0.0	24.0	640.0	3.60	149.8	16.0	1309.0	0.75	4.0	12.0	7953.0	X		YES				X		
020-0049	US 51 (NB)(FAP 322)	LONG POINT CREEK	149.8	40.0	5992.0	20.0	20	16.0	0.0	24.0	640.0	3.60	149.8	16.0	1309.0	0.75	4.0	12.0	7953.0	X		YES				X		
020-0050	US 51 (SB)(FAP 322)	TEN MILE CREEK	94.3	40.0	3772.0	13.5	13.5	16.0	0.0	24.0	432.0	3.60	94.3	13.5	873.4	0.75	0.0	0.0	5078.0		X	YES			X			
020-0051	US 51 (NB)(FAP 322)	TEN MILE CREEK	94.3	40.0	3772.0	13.5	13.5	16.0	0.0	24.0	432.0	3.60	94.3	13.5	873.4	0.75	0.0	0.0	5078.0		X	YES			X			
020-0052	US 51 (NB)(FAP 322)	TEN MILE CREEK	187.8	40.0	7512.0	16.0	16	16.0	0.0	24.0	512.0	3.60	187.8	13.5	1546.6	0.75	3.0	9.0	9580.0		X	YES			X			
020-0053	US 51 (SB)(FAP 322)	TEN MILE CREEK	187.8	40.0	7512.0	16.0	16	16.0	0.0	24.0	512.0	3.60	187.8	13.5	1546.6	0.75	3.0	9.0	9580.0		X	YES			X			
020-0054	US 51 BUSN(FAP 708)	COON CREEK	91.6	40.0	3664.0	28.0	18	40.0	10.0	24.0	1920.0	3.60	91.6	13.5	853.9	0.75	4.5	13.5	6452.0		X	YES			X			
020-0055	US 51 (SB)(FAP 322)	COON CREEK	239.2	40.0	9568.0	16.0	16	16.0	0.0	24.0	512.0	3.60	239.2	13.5	1916.6	0.75	2.5	7.5	12005.0		X	YES			X			
020-0056	US 51 (NB)(FAP 322)	COON CREEK	239.2	40.0	9568.0	16.0	16	16.0	0.0	24.0	512.0	3.60	239.2	13.5	1916.6	0.75	2.5	7.5	12005.0		X	YES			X			
020-0057	US 51 (NB)(FAP 322)	SALT CREEK	296.5	40.0	11860.0	18.5	18.5	16.0	0.0	24.0	592.0	3.60	296.5	13.5	2329.2	0.75	5.0	15.0	14797.0	X		YES				X		
020-0058	FAS 1517(US 150)	SALT CREEK	175.0	32.0	5600.0	30.0	0	32.0	30.0	33.2	1992.0	3.60	175.0	0.0	1260.0	0.75	30.0	90.0	8942.0	X						X		
020-0061	IL 10 (FAP 717)	CREEK	53.0	32.0	1696.0	30.0	30	32.0	0.0	32.0	1920.0	3.60	53.0	0.0	381.6	0.75	30.0	90.0	4088.0	X		YES				X		
020-0062	IL 10 (FAP 721)	SALT CREEK	188.0	32.0	6016.0	30.0	0	32.0	30.0	32.8	1968.0	3.60	188.0	0.0	1353.6	0.75	30.0	90.0	9428.0	X		YES				X		
020-0063	IL 10 (FAP 717)	CREEK	160.0	32.0	5120.0	30.0	0	32.0	30.0	32.8	1968.0	3.60	160.0	0.0	1152.0	0.75	30.0	90.0	8330.0		X	YES			X			
020-0064	FAP 71 (IL 54)	SALT CREEK	172.7	32.0	5526.4	30.0	15	32.0	15.0	33.8	1974.0	3.60	172.7	15.0	1459.4	0.75	15.0	45.0	9005.0	X						X		
020-2006	US 51 (NB)(FAP 322)	TEN MILE CREEK	52.0	40.0	2080.0	12.0	12	16.0	0.0	24.0	384.0	2.10	52.0	0.0	218.4	0.75	12.0	36.0	2719.0	X		YES				X		
020-2010	IL 10 (FAP 721)	FRIENDS CRK DITCH	25.0	32.0	800.0	30.0	30	32.0	0.0	24.0	1920.0	2.10	27.0	0.0	113.4	0.75	30.0	90.0	2924.0	X		YES				X		
020-2014	IL 54 (FAP 71)	COON CREEK	42.8	37.0	1583.6	30.0	30	37.0	0.0	24.0	2220.0	2.25	42.8	0.0	192.6	0.83	30.0	99.6	4096.0	X		YES				X		
AS-BUILT MEASUREMENTS AND CORRECTIONS FROM 70C72 IN 2018 NOTED AS FIELD MEASURED																		TOTALS (SQ FT)			190,371	122,263	68,108		0	0	68,108	122,263
																		NO. OF STRUCTURES			22	14	8		0	0	8	14
22	NO. OF STRUCTURES																	EST. WD'S (80,000 SQ FT/DAY)			3	2	1					

MODEL: Dewitt Quantities (Sheet)
 FILE NAME: c:\p\work\brandenburg\09066170570676_sht_schedule.dgn

MODEL: Platt Quantities (Sheet)
 FILE NAME: c:\p\work\brandonburg\090686170570G76_sht_schedule.dgn

PIATT COUNTY STRUCTURES SCHEDULE OF QUANTITIES																													
ACTUAL MEASUREMENTS																													
SN	ROUTE CARRIED	FEATURE CROSSED	DECK			APPROACH SLABS						PARAPETS (HUB, FACE & TOP)			TYPE B CURB (FACE & TOP)			TOTAL (SQ FT)	RURAL	URBAN	FIELD MEASURED	INTERSTATE MPO	INTERSTATE NON-MPO	NON-INTERSTATE MPO	NON-INTERSTATE NON-MPO				
			LENGTH (E E)	WIDTH (F F)	AREA (SQ FT)	LENGTH (FT)	DIMENSIONS INSIDE PARAPET / CURB		DIMENSIONS BEYOND PARAPET / CURB		AREA (SQ FT)	HEIGHT	LENGTH (FT)		AREA (SQ FT)	HEIGHT	LENGTH									AREA (SQ FT)			
							LENGTH	WIDTH	LENGTH	WIDTH			3.6 FT TYPICAL	ALONG DECK			ALONG APPR.										9 INCH TYPICAL	ALONG APPR.	
																					PPS-2000	PPS-1000	PPS-4000	PPS-3000					
074-0001	I-72 (EB)	IC RR	149.4	38.4	5735.8	29.5	14.76	38.4	14.8	41.6	2362.4	4.15	149.4	14.8	1484.8	0.75	14.8	44.3	9628.0	X				X					
074-0002	I-72 (WB)	IC RR	149.4	38.4	5735.8	29.5	14.76	38.4	14.8	41.6	2362.4	4.15	149.4	14.8	1484.8	0.75	14.8	44.3	9628.0	X				X					
074-0003	IL 10 (FAP 721)	GOOSE CREEK	39.9	33.0	1316.7	30.0	0	33.0	30.0	33.0	1900.0	0.00	0.0	0.0	0.0	0.00	0.0	0.0	3297.0	X						X			
074-0005	IL 10 (FAP 721)	MADDEN CREEK	149.1	32.0	4770.2	0.0	0	32.0	0.0	32.0	0.0	0.00	0.0	0.0	0.0	0.00	0.0	0.0	4771.0	X						X			
074-0007	IL 10 (FAP 721)	I-72	266.9	33.0	8806.7	30.0	0	33.0	30.0	36.2	2172.0	4.15	266.9	0.0	2215.0	0.75	30.0	90.0	13284.0	X						X			
074-0013	IL 48(FAP 760)	CREEK	29.7	38.5	1142.3	20.0	0	38.5	20.0	42.2	1688.0	0.00	29.7	0.0	145.7	0.75	5.0	15.0	2992.0	X						X			
074-0015	IL 48(FAP 760)	CREEK	45.3	32.0	1448.6	20.0	0	32.0	20.0	35.2	1330.0	4.15	45.3	0.0	375.7	0.75	5.0	15.0	3170.0	X						X			
074-0016	IL 48(FAP 760)	CREEK	23.1	38.5	888.2	20.0	0	38.5	20.0	42.2	1688.0	0.00	23.1	0.0	117.6	0.75	5.0	15.0	2709.0	X						X			
074-0021	FAS 538(BRIDGE ST)	SANGAMON RIVER	528.4	36.0	19021.3	30.0	13.5	36.0	16.5	39.2	2265.6	4.15	528.4	13.5	4609.6	0.75	16.5	49.5	25946.0		X	YES			X				
074-0030	IL 105(FAP 741)	CREEK	26.7	42.3	1128.9	20.0	0	42.3	20.0	45.3	1812.0	2.25	26.7	0.0	120.0	0.75	5.0	15.0	3076.0	X						X			
074-0035	TR 87	I-72	220.9	22.0	4859.1	0.0	0	22.0	0.0	27.7	0.0	3.32	220.9	0.0	1466.6	0.75	0.0	0.0	6714.8	X						X			
074-0037	I-74(EB)	S BRANCH SALT CRK	115.0	38.5	4426.3	40.0	10.0	24.0	30.0	24.0	1920.0	3.20	115.0	10.0	863.8	0.00	30.0	0.0	7211.0	X		YES		X					
074-0038	I-74(WB)	S BRANCH SALT CRK	115.0	38.5	4426.3	40.0	10.0	24.0	30.0	24.0	1920.0	3.20	115.0	10.0	863.8	0.00	30.0	0.0	7211.0	X		YES		X					
074-0040	TR 80	I-74	252.6	28.0	7072.0	0.0	0	28.0	0.0	30.0	0.0	3.32	252.6	0.0	1677.1	0.75	0.0	0.0	8750.0	X						X			
074-0041	TR 96	I-74	258.3	28.0	7231.6	0.0	0	28.0	0.0	30.0	0.0	3.32	258.3	0.0	1714.9	0.75	0.0	0.0	8947.0	X						X			
074-0042	I-74(EB)	NSRR & MADDEN CRK	234.2	38.5	9015.5	40.0	11.5	24.0	28.5	24.0	1920.0	3.20	234.2	11.5	1645.9	0.00	28.5	0.0	12582.0	X		YES		X					
074-0043	I-74(WB)	NSRR & MADDEN CRK	234.2	38.5	9015.5	40.0	11.5	24.0	28.5	24.0	1920.0	3.20	234.2	11.5	1645.9	0.00	28.5	0.0	12582.0	X		YES		X					
074-0044	FAS 495	I-74	249.4	64.8	16159.2	0.0	0	64.8	0.0	68.0	0.0	4.32	249.4	0.0	2154.6	0.75	0.0	0.0	18314.0	X						X			
074-0055	IL 48 (FAP 760)	I-72	248.5	64.8	16338.9	0.0	0	64.8	0.0	68.0	155.0	3.46	248.5	5.0	1788.6	0.75	5.0	15.0	18298.0	X						X			
074-0063	I-72 (EB)	WILDCAT CREEK	104.9	38.8	4069.0	0.0	0	38.8	0.0	42.0	0.0	3.43	104.9	0.0	719.4	0.75	0.0	0.0	4789.0	X				X					
074-0064	I-72 (WB)	WILDCAT CREEK	104.9	38.8	4069.0	0.0	0	38.8	0.0	42.0	0.0	3.43	104.9	0.0	719.4	0.75	0.0	0.0	4789.0	X				X					
074-0067	I-72 (EB)	SANGAMON RIVER	675.6	38.5	26009.4	0.0	0	38.5	0.0	42.0	2928.7	3.32	675.6	0.0	4485.8	0.75	0.0	0.0	33424.0		X	YES	X						
074-0068	I-72 (WB)	SANGAMON RIVER	675.6	38.5	26009.4	0.0	0	38.5	0.0	42.0	2928.7	3.32	675.6	0.0	4485.8	0.75	0.0	0.0	33424.0		X	YES	X						
074-0076	IL 10(FAP 721)	SANGAMON RIVER	587.7	32.0	18805.4	0.0	0	32.0	0.0	34.0	0.0	4.15	587.7	13.5	5101.8	0.75	0.0	0.0	23908.0	X						X			
074-0079	IL 105(FAP 741)	CREEK	50.2	40.0	2006.8	20.0	0	40.0	20.0	43.2	1470.6	4.15	50.2	0.0	416.4	0.75	5.0	15.0	3909.0	X						X			
074-0080	IL 105(FAP 741)	STREAM	39.7	40.0	1586.8	20.0	0	40.0	20.0	43.2	1470.6	4.15	39.7	0.0	329.3	0.75	5.0	15.0	3402.0	X						X			
074-0081	IL 48(FAP 760)	STREAM	79.7	32.0	2549.4	20.0	0	32.0	20.0	35.2	1470.6	4.15	79.7	0.0	661.3	0.75	5.0	15.0	4697.0	X						X			
074-0082	IL 48(FAP 760)	FRIENDS CRK DITCH	145.2	32.0	4645.4	20.0	0	32.0	20.0	35.2	1287.0	4.15	145.2	0.0	1204.9	0.75	5.0	15.0	7153.0	X						X			
074-0084	FAS 1517(US 150)	MADDEN CREEK	64.2	32.0	2053.4	30.0	0	32.0	30.0	35.2	2112.0	4.15	64.2	0.0	532.6	0.75	30.0	90.0	4789.0	X						X			
074-0086	US 150 (FAS 1517)	N & W RR	161.7	32.0	5173.4	30.0	15	32.0	15.0	35.2	2016.0	4.15	161.7	15.0	1590.9	0.75	15.0	45.0	8826.0	X						X			
074-0087	FAS 1517 (US 150)	S BRANCH SALT CRK	110.7	32.0	3541.4	30.0	15	32.0	15.0	35.2	2016.0	4.15	110.7	15.0	1167.6	0.75	15.0	45.0	6771.0	X						X			
074-2003	FAP 758(IL 32)	STREAM	43.0	32.0	1375.0	30.0	0	32.0	30.0	35.0	2100.0	2.25	43.0	0.0	193.4	0.75	30.0	90.0	3759.0	X						X			
NO AS-BUILT CORRECTIONS FROM CONTRACTS 70918 IN 2014 OR 70B94 IN 2017																			TOTALS (SQ FT)			322,751	229,957	92,794		66,848	68,420	25,946	161,537
																			NO. OF STRUCTURES			32	29	3		2	8	1	21
																			EST. WD'S (80,000 SQ FT/DAY)			4	3	1					

MCLEAN COUNTY STRUCTURES SCHEDULE OF QUANTITIES																											
ACTUAL MEASUREMENTS																											
SN	ROUTE CARRIED	FEATURE CROSSED	DECK			APPROACH SLABS						PARAPETS (HUB, FACE & TOP)				TYPE B CURB (FACE & TOP)			TOTAL (SQ FT)	RURAL	URBAN	FIELD MEASURED	INTERSTATE MPO		NON-INTERSTATE MPO		
			LENGTH (E-E)	WIDTH (F-F)	AREA (SQ FT)	LENGTH (FT)	DIMENSIONS INSIDE PARAPET / CURB		DIMENSIONS BEYOND PARAPET / CURB		AREA (SQ FT)	HEIGHT	LENGTH (FT)		AREA (SQ FT)	HEIGHT	LENGTH	AREA (SQ FT)					PPS-2000	PPS-1000	PPS-4000	PPS-3000	
							LENGTH	WIDTH	LENGTH	WIDTH			ALONG DECK	ALONG APPR.													9 INCH TYPICAL
057-0035	FAS 294/OLD 66A NB	MACKINAW RIVER	202.3	31.5	6372.5	30.0	0	31.5	30.0	31.5	1890.0	4.50	202.3	0.0	1820.7	0.75	30.0	90.0	10174.0	X		YES					X
057-0056	FAS 1476 (OLD 51)	KICKAPOO CREEK	178.7	34.5	6165.2	30.0	15.0	34.5	15.0	31.5	1980.0	4.75	178.7	15.0	1982.7	0.75	15.0	45.0	10173.0	X							X
057-0085	ILL 54	STREAM	30.0	40.0	1200.0	40.0	0	0.0	0.0	0.0	0.0	2.30	30.0	0.0	138.0	0.00	0.0	0.0	1338.0	X							X
057-0100	US 136	SMALL STREAM	30.0	39.2	1176.0	30.0	0	0.0	30.0	39.2	2352.0	2.30	30.0	0.0	138.0	0.75	30.0	90.0	3756.0	X							X
057-0110	ILL 165	MACKINAW CREEK	245.5	32.0	7856.0	20.0	20.0	32.0	0.0	0.0	1280.0	3.60	245.5	20.0	2055.6	0.00	0.0	0.0	11192.0	X							X
057-0120	I-74 EB	LITTLE KICKAPOO CR	161.6	40.0	6464.0	30.0	0.0	40.0	30.0	40.8	2448.0	3.60	161.6	0.0	1163.5	0.75	30.0	90.0	10166.0		X		X				
057-0121	I-74 WB	LITTLE KICKAPOO CR	161.6	40.0	6464.0	30.0	0.0	40.0	30.0	40.8	2448.0	3.60	161.6	0.0	1163.5	0.75	30.0	90.0	10166.0		X		X				
057-0123	TR 296	I-74/SE OF B-N	272.0	26.5	7208.0	0.0	0.0	0.0	0.0	0.0	0.0	3.60	272.0	12.0	2131.2	0.00	0.0	0.0	9340.0		X					X	
057-0125	I-74 EB	KICKAPOO CR	189.2	40.0	7566.8	30.0	12.0	40.0	18.0	41.0	2436.0	3.60	189.2	12.0	1534.8	0.75	18.0	54.0	11592.0		X		X				
057-0126	I-74 WB	LITTLE KICKAPOO CR	189.2	40.0	7566.8	30.0	12.0	40.0	18.0	41.0	2436.0	3.60	189.2	12.0	1534.8	0.75	18.0	54.0	11592.0		X		X				
057-0128	I-74 EB	LITTLE KICKAPOO CR	109.5	38.8	4248.6	0.0	0.0	38.8	0.0	42.0	0.0	3.60	109.5	15.0	1004.4	0.00	0.0	0.0	5253.0		X		X				
057-0129	I-74 WB	LITTLE KICKAPOO CR	109.5	40.0	4380.0	30.0	0.0	40.0	30.0	41.0	2460.0	3.60	109.5	0.0	788.4	0.75	30.0	90.0	7719.0		X		X				
057-0130	TR 366A	I-74	267.2	26.5	7080.8	0.0	0.0	0.0	0.0	0.0	0.0	3.60	267.2	12.0	2096.6	0.00	0.0	0.0	9178.0	X							X
057-0131	TR 390	I-74/2 MI W OF LEROY	280.0	26.5	7420.0	0.0	0.0	0.0	0.0	0.0	0.0	3.60	280.0	15.0	2232.0	0.00	0.0	0.0	9652.0	X							X
057-0132	SBI 119 SP#2488	I-74	225.4	65.5	14763.7	30.0	0.0	0.0	30.0	20.0	1200.0	3.60	225.4	12.0	1795.7	0.75	18.0	54.0	17814.0	X							X
057-0133	I-74 EB	N FORK SALT CREEK	136.7	40.0	5466.8	30.0	0.0	40.0	30.0	43.2	2592.0	3.60	136.7	0.0	984.0	0.75	30.0	90.0	9133.0	X					X		
057-0134	I-74 WB	N FORK SALT CREEK	136.7	40.0	5466.8	30.0	0.0	40.0	30.0	43.2	2592.0	3.60	136.7	0.0	984.0	0.75	30.0	90.0	9133.0	X					X		
057-0135	US 136	I-74	319.7	65.5	20940.4	30.0	12.0	20.0	18.0	20.0	1200.0	3.60	319.7	12.0	2474.6	0.75	18.0	54.0	24669.0	X							X
057-0149	SBI 119 SP#2488	SALT CREEK	21.4	40.0	856.0	0.0	0.0	0.0	0.0	0.0	0.0	0.00	0.0	0.0	0.0	0.00	0.0	0.0	856.0	X							X
057-0150	FAS 1478	CREEK	21.3	40.0	852.0	0.0	0.0	0.0	0.0	0.0	0.0	0.00	0.0	0.0	0.0	0.00	0.0	0.0	852.0	X							X
057-0152	I-55 SB	US 24/FAP 317	186.5	43.4	8094.1	30.0	5	43.4	25.0	45.0	2684.0	3.60	186.5	5.0	1414.8	0.75	25.0	75.0	12268.0	X		YES			X		
057-0153	I-55 NB	US 24/FAP 317	186.5	50.7	9455.6	30.0	5	50.7	25.0	52.2	3117.0	3.60	186.5	5.0	1414.8	0.75	25.0	75.0	14063.0	X		YES			X		
057-0156	TR 539	FAI 55	300.7	26.8	8058.0	0.0	0	26.8	0.0	30.0	0.0	3.60	300.7	0.0	2164.8	0.00	0.0	0.0	10223.0	X							X
057-0157	I-55 SB	RAMPS & CH36	177.5	38.5	6833.8	30.0	30	38.5	0.0	40.0	2310.0	3.60	177.5	30.0	1710.0	0.75	8.0	24.0	10878.0	X		YES			X		
057-0158	I-55 NB	RAMPS & CH36	181.5	50.0	9075.0	30.0	30	50.0	0.0	51.5	3000.0	3.60	181.5	30.0	1738.8	0.75	8.0	24.0	13838.0	X		YES			X		
057-0159	I-55 SB	TIMBER CR	192.2	40.0	7688.0	30.0	30	40.0	0.0	42.0	2400.0	3.60	192.2	14.0	1585.4	0.75	16.0	48.0	11722.0	X		YES			X		
057-0160	I-55 NB	TIMBER CR	192.2	40.0	7688.0	30.0	30	40.0	0.0	42.0	2400.0	3.60	192.2	14.0	1585.4	0.75	16.0	48.0	11722.0	X		YES			X		

MODEL: Mclean Quantities Sheet_1 [Sheet]
 FILE NAME: c:\p\work\brandenburg\09986170570G76_sht_schedule.dgn

USER NAME = timothy.brandenburg	DESIGNED - TJB	REVISED -
	DRAWN -	REVISED -
	CHECKED -	REVISED -
PLOT DATE = 10/3/2024	DATE - 02/22/2024	REVISED -

**STATE OF ILLINOIS
DEPARTMENT OF TRANSPORTATION**

MCLEAN COUNTY SCHEDULE OF QUANTITIES

SCALE: SHEET 3 OF 8 SHEETS STA. TO STA.

F.A. RTE.	SECTION	COUNTY	TOTAL SHEETS	SHEET NO.
VAR.	FY25 BRIDGE DECK SEALING	VARIOUS	22	16
CONTRACT NO. 70G76				
ILLINOIS FED. AID PROJECT				

MCLEAN COUNTY STRUCTURES SCHEDULE OF QUANTITIES																												
ACTUAL MEASUREMENTS																												
SN	ROUTE CARRIED	FEATURE CROSSED	DECK			APPROACH SLABS						PARAPETS (HUB, FACE & TOP)				TYPE B CURB (FACE & TOP)			TOTAL (SQ FT)	RURAL	URBAN	FIELD MEASURED	INTERSTATE MPO	INTERSTATE NON-MPO	NON-INTERSTATE MPO	NON-INTERSTATE NON-MPO		
			LENGTH (E-E)	WIDTH (F-F)	AREA (SQ FT)	LENGTH (FT)	DIMENSIONS INSIDE PARAPET / CURB		DIMENSIONS BEYOND PARAPET / CURB		AREA (SQ FT)	HEIGHT 3.6 FT TYPICAL	LENGTH (FT)		AREA (SQ FT)	HEIGHT 9 INCH TYPICAL	LENGTH ALONG APPR.	AREA (SQ FT)					PPS 2000	PPS 1000	PPS 4000	PPS 3000		
							LENGTH	WIDTH	LENGTH	WIDTH			ALONG DECK	ALONG APPR.														
057-0173	I-55 SB	TURKEY CREEK	96.4	38.5	3711.4	30.0	5	38.5	25.0	40.0	2385.0	3.60	96.4	5.0	766.1	0.75	25.0	75.0	6938.0	X		YES		X				
057-0174	I-55 NB	TURKEY CREEK	96.4	38.5	3711.4	30.0	5	38.5	25.0	40.0	2385.0	3.60	96.4	5.0	766.1	0.75	25.0	75.0	6938.0	X		YES		X				
057-0178	I-55 SB	A.T. & S.F. RR	144.7	38.5	5569.8	30.0	12	38.5	18.0	40.0	2364.0	3.60	144.7	12.0	1214.4	0.75	18.0	54.0	9203.0	X		YES		X				
057-0179	I-55 NB	A.T. & S.F. RR	144.7	38.5	5569.8	30.0	12	38.5	18.0	40.0	2364.0	3.60	144.7	12.0	1214.4	0.75	18.0	54.0	9203.0	X		YES		X				
057-0182	I-55 SB	TURKEY CREEK	179.7	38.5	6917.3	30.0	12	38.5	18.0	41.8	2428.8	3.60	179.7	12.0	1466.4	0.75	18.0	54.0	10867.0	X		YES		X				
057-0183	I-55 NB	TURKEY CREEK	179.7	38.5	6917.3	30.0	12	38.5	18.0	41.8	2428.8	3.60	179.7	12.0	1466.4	0.75	18.0	54.0	10867.0	X		YES		X				
057-0185	US 136	BRANCH SALT CREEK	214.8	32.0	6872.0	30.0	0	0.0	30.0	32.0	1920.0	0.00	0.0	0.0	0.0	0.00	0.0	0.0	8792.0	X						X		
057-0191	ILL 9	BRAYS CREEK	52.5	32.0	1680.0	0.0	0	0.0	0.0	0.0	0.0	0.00	0.0	0.0	0.0	0.00	0.0	0.0	1680.0	X						X		
057-0196	US 51 SB	KICKAPOO CREEK	286.2	40.0	11446.8	20.0	15	16.0	5.0	17.2	652.0	3.60	286.2	15.0	2276.4	0.75	5.0	15.0	14391.0	X		YES				X		
057-0197	US 51 NB	KICKAPOO CREEK	286.2	40.0	11446.8	20.0	15	16.0	5.0	17.2	652.0	3.60	286.2	15.0	2276.4	0.75	5.0	15.0	14391.0	X		YES				X		
057-0198	FAP 412 US 51(SB)	US 136	171.4	40.0	6854.8	12.0	0	40.0	12.0	17.2	412.8	3.60	171.4	0.0	1233.9	0.75	12.0	36.0	8538.0	X		YES				X		
057-0199	FAP 412 US 51(NB)	US 136	171.4	40.0	6854.8	12.0	0	40.0	12.0	17.2	412.8	3.60	171.4	0.0	1233.9	0.75	12.0	36.0	8538.0	X		YES				X		
057-0200	SBI 119 SP#2488	W FK SALT CREEK	147.5	32.0	4720.0	20.0	0	0.0	20.0	33.2	1328.0	3.60	147.5	0.0	1062.0	0.75	20.0	60.0	7170.0	X						X		
057-0218	US 136	SALT CREEK	114.0	30.0	3420.0	45.0	12	31.2	33.0	24.0	2332.8	3.60	114.0	0.0	820.8	0.75	12.0	36.0	6610.0	X						X		
057-0220	ILL 165	BR MACKINAW RIVER	70.0	32.0	2240.0	20.0	12	33.2	8.0	22.0	1148.8	3.60	70.0	0.0	504.0	0.75	12.0	36.0	3929.0	X						X		
057-0221	ILL 165	BR MACKINAW RIVER	76.9	32.0	2460.8	34.0	12	33.2	22.0	22.0	1764.8	3.60	76.9	0.0	553.7	0.75	12.0	36.0	4816.0	X						X		
057-0222	ILL 165	BR MACKINAW RIVER	84.3	32.0	2697.6	42.0	10	33.2	32.0	22.0	2072.0	3.60	84.3	0.0	607.0	0.75	10.0	30.0	5407.0	X						X		
057-0224	US 150	KICKAPOO CREEK	62.0	40.0	2480.0	30.0	0	0.0	30.0	41.2	2472.0	3.60	62.0	0.0	446.4	0.75	30.0	90.0	5489.0		X				X			
057-0225	SBI-2 (OLD 51)	DITCH	42.9	32.0	1372.8	20.0	0	32.0	20.0	33.2	1328.0	3.60	42.9	0.0	308.9	0.75	20.0	60.0	3070.0	X						X		
057-0230	US 24/ FAP 317	ROOKS CREEK	151.8	40.0	6072.0	30.0	10	40.0	20.0	41.2	2448.0	3.60	151.8	10.0	1237.0	0.75	10.0	30.0	9787.0	X		YES				X		
057-0239	FAU 6348/OLD RT66	MONEY CREEK	124.7	31.5	3928.1	30.0	0	31.5	30.0	31.5	1890.0	4.50	124.7	0.0	1122.3	0.75	30.0	90.0	7031.0		X	YES			X			
057-0241	US 150	SALT CREEK (N FORK)	120.0	32.0	3840.0	30.0	0	0.0	30.0	32.8	1968.0	3.60	120.0	0.0	864.0	0.75	30.0	90.0	6762.0	X						X		
057-0243	FAS 1488/OLD RT 66	TIMBER CREEK	131.7	32.0	4213.4	30.0	15	32.0	15.0	31.5	1905.0	3.60	131.7	15.0	1164.0	0.75	15.0	45.0	7328.0	X						X		
057-0244	US 136	KICKAPOO CREEK	310.0	36.0	11160.0	30.0	15	36.0	15.0	37.8	2214.0	3.60	310.0	15.0	2448.0	0.75	15.0	45.0	15867.0	X		YES				X		
057-0245	US 136	PRAIRIE CREEK	157.0	36.0	5652.0	30.0	15	36.0	15.0	37.8	2214.0	3.60	157.0	15.0	1346.4	0.75	15.0	45.0	9258.0	X		YES				X		
057-0246	US 150	KICKAPOO CREEK	147.5	40.0	5900.0	30.0	0	0.0	30.0	40.8	2448.0	3.60	147.5	0.0	1062.0	0.75	30.0	90.0	9500.0		X				X			
057-0248	FAS 2484 (IL 165)	MONEY CREEK	116.0	32.0	3712.0	30.0	15	32.0	15.0	33.8	1974.0	3.60	116.0	15.0	1051.2	0.75	15.0	45.0	6783.0	X						X		
057-0255	FAS 294/OLD 66A	TURKEY CREEK	78.0	32.0	2496.0	30.0	15	32.0	15.0	33.0	1950.0	6.00	78.0	15.0	1296.0	0.75	15.0	45.0	5787.0	X		YES				X		
AS-BUILT MEASUREMENTS AND CORRECTIONS FROM 70C/2 IN 2018 NOTED AS FIELD MEASURED																		TOTALS (SQ FT)			493,402	405,554	87,848		56,488	146,773	31,360	258,781
																		NO. OF STRUCTURES			55	45	10		6	14	4	31
55 NO. OF STRUCTURES																		EST. WD'S (80,000 SQ FT/DAY)			6	5	1					

MODEL: Mclean Quantities Sheet 2 (Sheet)
 FILE NAME: c:\p\work\brandenburg\090686170570G76_sht_schedule.dgn

DEWITT COUNTY STRUCTURES SCHEDULE OF QUANTITIES																							
		TRAFFIC CONTROL & PROTECTION							PROSECUTION & PROGRESS		RURAL	URBAN	INTERSTATE MPO	INTERSTATE NON-MPO	NON-INTERSTATE MPO	NON-INTERSTATE NON-MPO							
SN	ROUTE CARRIED	FEATURE CROSSED	701201 (2L, 2W, >= 45)	701411 (RAMPS - DL ONLY)	701426 SPECIAL (>= 45)	701427 SPECIAL (<= 40)	D5 DETAIL 70200000 ROAD CLOSURE	LOCATION	SUMMARY	CHANGEABLE MESSAGE SIGN (Calendar Days)	WORKING DAYS	PROSECUTION			PPS-2000	PPS-1000	PPS-4000	PPS-3000					
020-0048	US 51 (SB)(FAP 322)	LONG POINT CREEK			1			D1	7 - 701426 SPECIAL; 11 SN	1 - CMS ON US 51 NB & SB; SINGLE DISPLAY; 7 CAL. DAYS PRIOR; TOTAL 14 CAL. DAYS	3	1 HR PER LANE; 22 HRS	X					X					
020-0049	US 51 (NB)(FAP 322)	LONG POINT CREEK			1								X										X
020-2006	US 51 (NB)(FAP 322)	TEN MILE CREEK			1																		X
020-0050	US 51 (SB)(FAP 322)	TEN MILE CREEK			1														X				
020-0051	US 51 (NB)(FAP 322)	TEN MILE CREEK			INCL.														X				
020-0052	US 51 (NB)(FAP 322)	TEN MILE CREEK			1														X				
020-0053	US 51 (SB)(FAP 322)	TEN MILE CREEK			INCL.														X				
020-0055	US 51 (SB)(FAP 322)	COON CREEK			1														X				
020-0056	US 51 (NB)(FAP 322)	COON CREEK			INCL.														X				
020-0005	US 51 (SB)(FAP 322)	SALT CREEK			INCL.													X					X
020-0057	US 51 (NB)(FAP 322)	SALT CREEK			1													X					X
020-0020	IL 54 (FAP 71)	SALT CREEK	0	-		-		D2	14 - 701201; 7 SN		2	1 HR PER LANE; 14 HRS	X	-				X					
020-0061	IL 10 (FAP 717)	CREEK	2															X					X
020-0063	IL 10 (FAP 717)	CREEK	2																X				
020-0054	US 51 BUSN(FAP 708)	COON CREEK	2																X				
020-0062	IL 10 (FAP 721)	SALT CREEK	2															X					X
020-2010	IL 10 (FAP 721)	FRIENDS CREEK DITCH	2															X					X
020-2014	IL 54 (FAP 71)	COON CREEK	2															X					X
020-0043	FAP 71 (IL 54)	N FORK SALT CREEK	2																				X
020-0024	TR 5 RELOCATED	I-74					1	D3	6 - 701201; 1 ROAD CLOSURE; 4 SN		1	1 HR PER LANE; 8 HRS	X					X					
020-0035	IL 54 (FAP 71)	TRIB TO SALT CREEK	2															X					X
020-0058	FAS 1517(US 150)	SALT CREEK	2															X					X
020-0064	FAP 71 (IL 54)	SALT CREEK	2															X					X
TC&P SET-UPS & CMS CALENDAR DAYS			20	0	7	0	1			14	6												
WORKING DAYS PER STANDARD			3		3					USE AT RE'S DIRECTION													

MODEL: Dewitt TC (Sheet)
 FILE NAME: c:\pwworking\brandonburg\090686170570G76_sht_schedule.dgn

PIATT COUNTY STRUCTURES SCHEDULE OF QUANTITIES																								
TRAFFIC CONTROL & PROTECTION																								
SN	ROUTE CARRIED	FEATURE CROSSED	701201 (2L, 2W, >= 45)	701411 (RAMPS - DL ONLY)	701426 SPECIAL (>= 45)	701427 SPECIAL (<= 40)	D5 DETAIL 70200000 ROAD CLOSURE	LOCATION	SUMMARY	CHANGEABLE MESSAGE SIGN (Calendar Days)	WORKING DAYS	PROSECUTION	RURAL	URBAN	INTERSTATE MPO	INTERSTATE NON-MPO	NON-INTERSTATE MPO	NON-INTERSTATE NON-MPO						
															PPS-2000	PPS-1000	PPS-4000	PPS-3000						
074-0037	I-74(EB)	S BRANCH SALT CREEK		1	1			P1	2 - 701411; 2 - 701426 SPECIAL; 4 SN	1 - CMS ON FAI 74 EB & WB; SINGLE DISPLAY; 7 CAL. DAYS PRIOR; TOTAL 14 CAL. DAYS	1	1 HR PER LANE; 8 HRS	X			X								
074-0038	I-74(WB)	S BRANCH SALT CREEK			INCL.												X							
074-0042	I-74(EB)	NSRR & MADDEN CREEK			INCL.													X						
074-0043	I-74(WB)	NSRR & MADDEN CREEK		1	1													X						
074-0087	FAS 1517 (US 150)	S BRANCH SALT CREEK	2					P2	6 - 701201; 3 - ROAD CLOSURE; 6 SN		1	1 HR PER LANE; 9 HRS	X					X						
074 0086	US 150 (FAS 1517)	N & W RR	2													X						X		
074-0084	FAS 1517(US 150)	MADDEN CREEK	2														X						X	
074-0040	TR 80	I-74					1										X						X	
074-0041	TR 96	I-74					1										X						X	
074-0044	FAS 495	I-74					1										X						X	
074-0003	IL 10 (FAP 721)	GOOSE CREEK	2					P3	8 - 701201; 4 SN		1	1 HR PER LANE; 8 HRS	X						X					
074-0076	IL 10(FAP 721)	SANGAMON RIVER	2														X						X	
074-0005	IL 10 (FAP 721)	MADDEN CREEK	2														X						X	
074-0007	IL 10 (FAP 721)	I-72	2														X						X	
074-0001	I-72 (EB)	IC RR			2			P4	12 - 701426 SPECIAL; 6 SN	1 - CMS ON FAI 72 EB & WB; SINGLE DISPLAY; 7 CAL. DAYS PRIOR; TOTAL 14 CAL. DAYS	1	1 HR PER LANE; 12 HRS	X			X								
074-0002	I-72 (WB)	IC RR			2													X			X			
074-0067	I-72 (EB)	SANGAMON RIVER			2														X					
074-0068	I-72 (WB)	SANGAMON RIVER			2														X					
074-0063	I-72 (EB)	WILDCAT CREEK			2													X			X			
074-0064	I-72 (WB)	WILDCAT CREEK			2													X			X			
074-0013	IL 48(FAP 760)	CREEK	2					P5	8 - 701201; 6 SN		1	1 HR PER LANE; 8 HRS	X						X					
074-0081	IL 48(FAP 760)	STREAM	INCL.														X						X	
074-0015	IL 48(FAP 760)	CREEK	2														X						X	
074-0082	IL 48(FAP 760)	FRIENDS CREEK DITCH	INCL.														X						X	
074-0016	IL 48(FAP 760)	CREEK	2														X						X	
074-0055	IL 48 (FAP 760)	I-72	2														X						X	
074-0035	TR 87	I-72					1	P6	10 - 701201; 1 - ROAD CLOSURE; 6 SN		1	1 HR PER LANE; 11 HRS	X						X					
074-0021	FAS 538(BRIDGE ST)	SANGAMON RIVER	2															X					X	
074-0030	IL 105(FAP 741)	CREEK	2														X						X	
074-0080	IL 105(FAP 741)	STREAM	2														X						X	
074-0079	IL 105(FAP 741)	CREEK	2														X						X	
074-2003	FAP 758(IL 32)	STREAM	2														X						X	
TC&P SET-UPS & CMS CALENDAR DAYS			32	2	14	0	4			28	6													
WORKING DAYS PER STANDARD			4		2					USE AT RE'S DIRECTION														

MODEL: Piatt TC (Sheet)
 FILE NAME: c:\p\work\piatt\brandenburg\09686170570G76_sht_schedule.dgn

USER NAME = timothy.brandenburg	DESIGNED - TJB	REVISED -
	DRAWN -	REVISED -
	CHECKED -	REVISED -
PLOT DATE = 10/3/2024	DATE - 02/22/2024	REVISED -

**STATE OF ILLINOIS
DEPARTMENT OF TRANSPORTATION**

PIATT COUNTY TRAFFIC CONTROL SCHEDULE

SCALE: SHEET 6 OF 8 SHEETS STA. TO STA.

F.A. RTE.	SECTION	COUNTY	TOTAL SHEETS	SHEET NO.
VAR.	FY25 BRIDGE DECK SEALING	VARIOUS	22	19
CONTRACT NO. 70G76				
ILLINOIS		FED. AID PROJECT		

MCLEAN COUNTY STRUCTURES SCHEDULE OF QUANTITIES																					
			TRAFFIC CONTROL & PROTECTION						PROSECUTION & PROGRESS		RURAL	URBAN	INTERSTATE MPO	INTERSTATE NON-MPO	NON-INTERSTATE MPO	NON-INTERSTATE NON-MPO					
SN	ROUTE CARRIED	FEATURE CROSSED	701201 (2L, 2W, >= 45)	701411 (RAMPS - DL ONLY)	701426 SPECIAL (>= 45)	701427 SPECIAL (<= 40)	D5 DETAIL 70200000 ROAD CLOSURE	LOCATION	SUMMARY	CHANGEABLE MESSAGE SIGN (Calendar Days)							WORKING DAYS	PROSECUTION			
			PPS-2000	PPS-1000	PPS-4000	PPS-3000															
057-0120	I-74 EB	LITTLE KICKAPOO CR			2			M1	16 - 701426 SPECIAL; 8 SN	1 - CMS ON FAI 74 EB & WB; SINGLE DISPLAY; 7 CAL. DAYS PRIOR; TOTAL 14 CAL. DAYS	2	1 HR PER LANE; 16 HRS		X	X						
057-0121	I-74 WB	LITTLE KICKAPOO CR			2									X	X						
057-0125	I-74 EB	KICKAPOO CR			2									X	X						
057-0126	I-74 WB	LITTLE KICKAPOO CR			2									X	X						
057-0128	I-74 EB	LITTLE KICKAPOO CR			2									X	X						
057-0129	I-74 WB	LITTLE KICKAPOO CR			2									X	X						
057-0133	I-74 EB	N FORK SALT CREEK			2									X			X				
057-0134	I-74 WB	N FORK SALT CREEK			2									X			X				
057-0185	US 136	BRANCH SALT CREEK	2					M2	10 - 701201; 5 SN		1	1 HR PER LANE; 10 HRS	X				X				
057-0135	US 136	I-74	2											X							X
057-0218	US 136	SALT CREEK	2											X							X
057-0100	US 136	SMALL STREAM	2											X							X
057-0085	ILL 54	STREAM	2											X							X
057-0150	FAS 1478	CREEK	2					M3	14 - 701201; 3 - ROAD CLOSURE; 10 SN		2	1 HR PER LANE; 17 HRS	X					X			
057-0149	SBI 119 SP#2488	SALT CREEK	2											X							X
057-0200	SBI 119 SP#2488	W FK SALT CREEK	2											X							X
057-0132	SBI 119 SP#2488	I-74	2											X							X
057-0241	US 150	SALT CREEK (N FORK)	2											X							X
057-0131	TR 390	I-74/2 MI W OF LEROY					1							X							X
057-0130	TR 366A	I-74					1							X							X
057-0123	TR 296	I-74/SE OF BLOOMNGTN					1												X		
057-0224	US 150	KICKAPOO CREEK	2																X		
057-0246	US 150	KICKAPOO CREEK	2											X							
057-0196	US 51 SB	KICKAPOO CREEK			2			M4	6 - 701201; 4 - 701426 SPECIAL; 7 SN	1 - CMS ON US 51 NB & SB; SINGLE DISPLAY; 7 CAL. DAYS PRIOR; TOTAL 14 CAL. DAYS	1	1 HR PER LANE; 10 HRS	X					X			
057-0197	US 51 NB	KICKAPOO CREEK			INCL.									X							X
057-0198	FAP 412 US 51(SB)	US 136			INCL.									X							X
057-0199	FAP 412 US 51(NB)	US 136			2									X							X
057-0056	FAS 1476 (OLD 51)	KICKAPOO CREEK	2											X							X
057-0225	SBI-2 (OLD 51)	DITCH	2											X							X
057-0244	US 136	KICKAPOO CREEK	2											X							X

MODEL: Mclean TC Sheet 1 (Sheet)
 FILE NAME: c:\p\work\wtd\brandenburg\09686170570376_sht_schedule.dgn

USER NAME = timothy.brandenburg	DESIGNED - TJB	REVISED -
	DRAWN -	REVISED -
	CHECKED -	REVISED -
PLOT DATE = 10/8/2024	DATE - 02/22/2024	REVISED -

**STATE OF ILLINOIS
DEPARTMENT OF TRANSPORTATION**

MCLEAN COUNTY TRAFFIC CONTROL SCHEDULE

SCALE: SHEET 7 OF 8 SHEETS STA. TO STA.

F.A. RTE.	SECTION	COUNTY	TOTAL SHEETS	SHEET NO.
VAR.	FY25 BRIDGE DECK SEALING	VARIOUS	22	20
			CONTRACT NO. 70G76	
		ILLINOIS	FED. AID PROJECT	

MCLEAN COUNTY STRUCTURES SCHEDULE OF QUANTITIES																								
			TRAFFIC CONTROL & PROTECTION					PROSECUTION & PROGRESS				INTERSTATE MPO		NON-INTERSTATE MPO										
SN	ROUTE CARRIED	FEATURE CROSSED	701201 (2L, 2W, >= 45)	701411 (RAMPS - DL ONLY)	701426 SPECIAL (>= 45)	701427 SPECIAL (<= 40)	D5 DETAIL 70200000 ROAD CLOSURE	LOCATION	SUMMARY	CHANGEABLE MESSAGE SIGN (Calendar Days)	WORKING DAYS	PROSECUTION	RURAL	URBAN	PPS-2000	PPS-1000	PPS-4000	PPS-3000						
057-0245	US 136	PRAIRIE CREEK	2					M5	4 - 701201; 2 - 701411; 4 - 701426 SPECIAL; 1 - ROAD CLOSURE; 7 SN	1 - CMS ON FAI 55 NB & SB; SINGLE DISPLAY; 7 CAL. DAYS PRIOR; TOTAL 14 CAL. DAYS	1	1 HR PER LANE; 9 HRS	X					X						
057-0243	FAS 1488/OLD RT 66	TIMBER CREEK	2										X										X	
057-0156	TR 539	FAI 55					1																	X
057-0157	I-55 SB	RAMPS & CH36			INCL.													X			X			
057-0158	I-55 NB	RAMPS & CH36		2	2													X			X			
057-0159	I-55 SB	TIMBER CR			2													X			X			
057-0160	I-55 NB	TIMBER CR			INCL.													X			X			
057-0173	I-55 SB	TURKEY CREEK			2			M6	12 - 701426 SPECIAL; 2 - 701411; 8 SN	1 - CMS ON FAI 55 NB & SB; SINGLE DISPLAY; 7 CAL. DAYS PRIOR; TOTAL 14 CAL. DAYS	1	1 HR PER LANE; 12 HRS	X			X								
057-0174	I-55 NB	TURKEY CREEK			2								X					X						
057-0152	I-55 SB	US 24/FAP 317			INCL.													X			X			
057-0153	I-55 NB	US 24/FAP 317		2	2													X			X			
057-0178	I-55 SB	A.T. & S.F. RR			2													X			X			
057-0179	I-55 NB	A.T. & S.F. RR			INCL.													X			X			
057-0182	I-55 SB	TURKEY CREEK			2													X			X			
057-0183	I-55 NB	TURKEY CREEK			2								X			X								
057-0035	FAS 294/OLD 66A NB	MACKINAW RIVER	2					M7	8 - 701201; 4 SN		1	1 HR PER LANE; 8 HRS	X						X					
057-0230	US 24/ FAP 317	ROOKS CREEK	2										X											X
057-0239	FAU 6348/OLD RT66	MONEY CREEK	2															X				X		
057-0255	FAS 294/OLD 66A	TURKEY CREEK	2															X						X
057-0110	ILL 165	MACKINAW CREEK	2					M8	12 - 701201; 6 SN		1	1 HR PER LANE; 12 HRS	X						X					
057-0220	ILL 165	BR MACKINAW RIVER	2										X											X
057-0221	ILL 165	BR MACKINAW RIVER	2										X											X
057-0222	ILL 165	BR MACKINAW RIVER	2										X											X
057-0248	FAS 2484 (IL 165)	MONEY CREEK	2										X											X
057-0191	ILL 9	BRAYS CREEK	2										X											X
TC&P SET-UPS & CMS CALENDAR DAYS			54	4	36	0	4			56	10													
WORKING DAYS PER STANDARD			5		5					USE AT RE'S DIRECTION														

MODEL: Mclean TC Sheet 2 (Sheet)
 FILE NAME: c:\p\work\wib\brandenburg\090686170570376_sht_schedule.dgn

USER NAME = timothy.brandenburg	DESIGNED - TJB	REVISED -
	DRAWN -	REVISED -
	CHECKED -	REVISED -
PLOT DATE = 10/8/2024	DATE - 02/22/2024	REVISED -

**STATE OF ILLINOIS
DEPARTMENT OF TRANSPORTATION**

MCLEAN COUNTY TRAFFIC CONTROL SCHEDULE

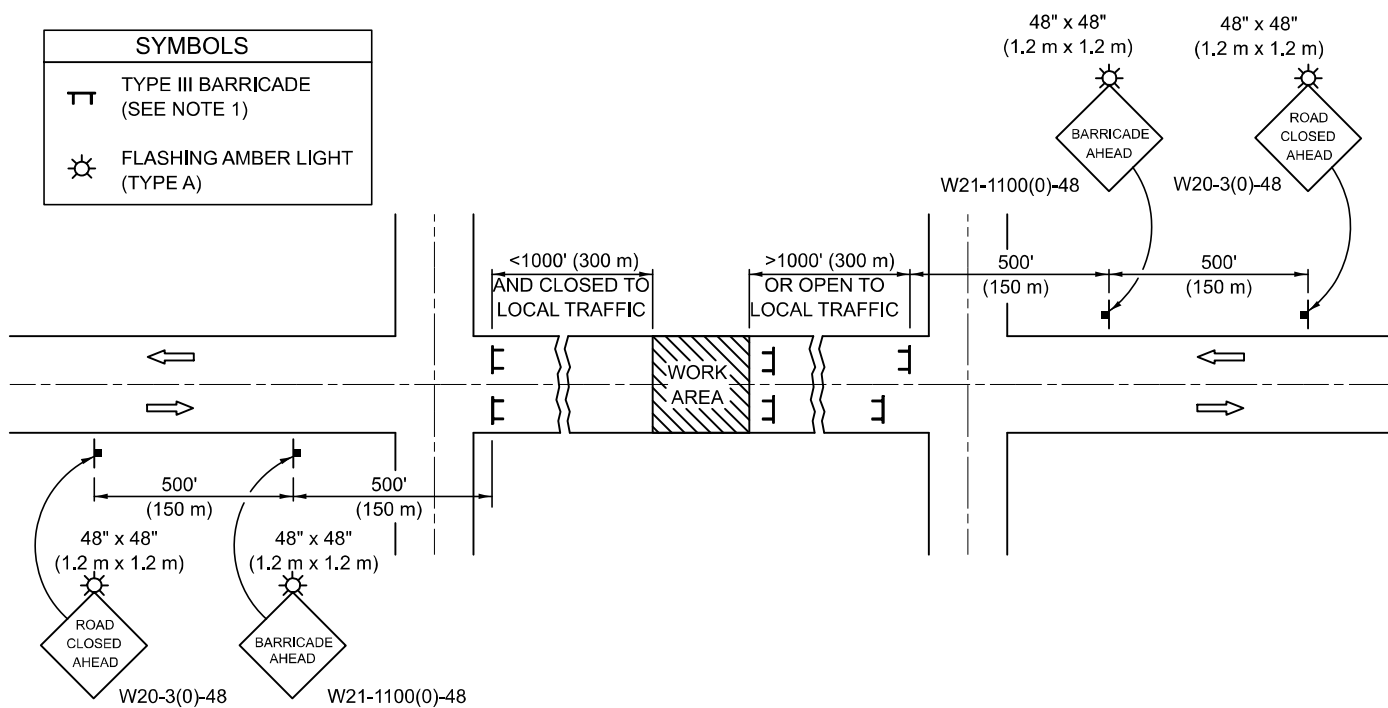
SCALE: SHEET 8 OF 8 SHEETS STA. TO STA.

F.A. RTE.	SECTION	COUNTY	TOTAL SHEETS	SHEET NO.
VAR.	FY25 BRIDGE DECK SEALING	VARIOUS	22	21
CONTRACT NO. 70G76				
ILLINOIS FED. AID PROJECT				

ROAD CLOSURE

SIDEROAD / STREET CLOSURE

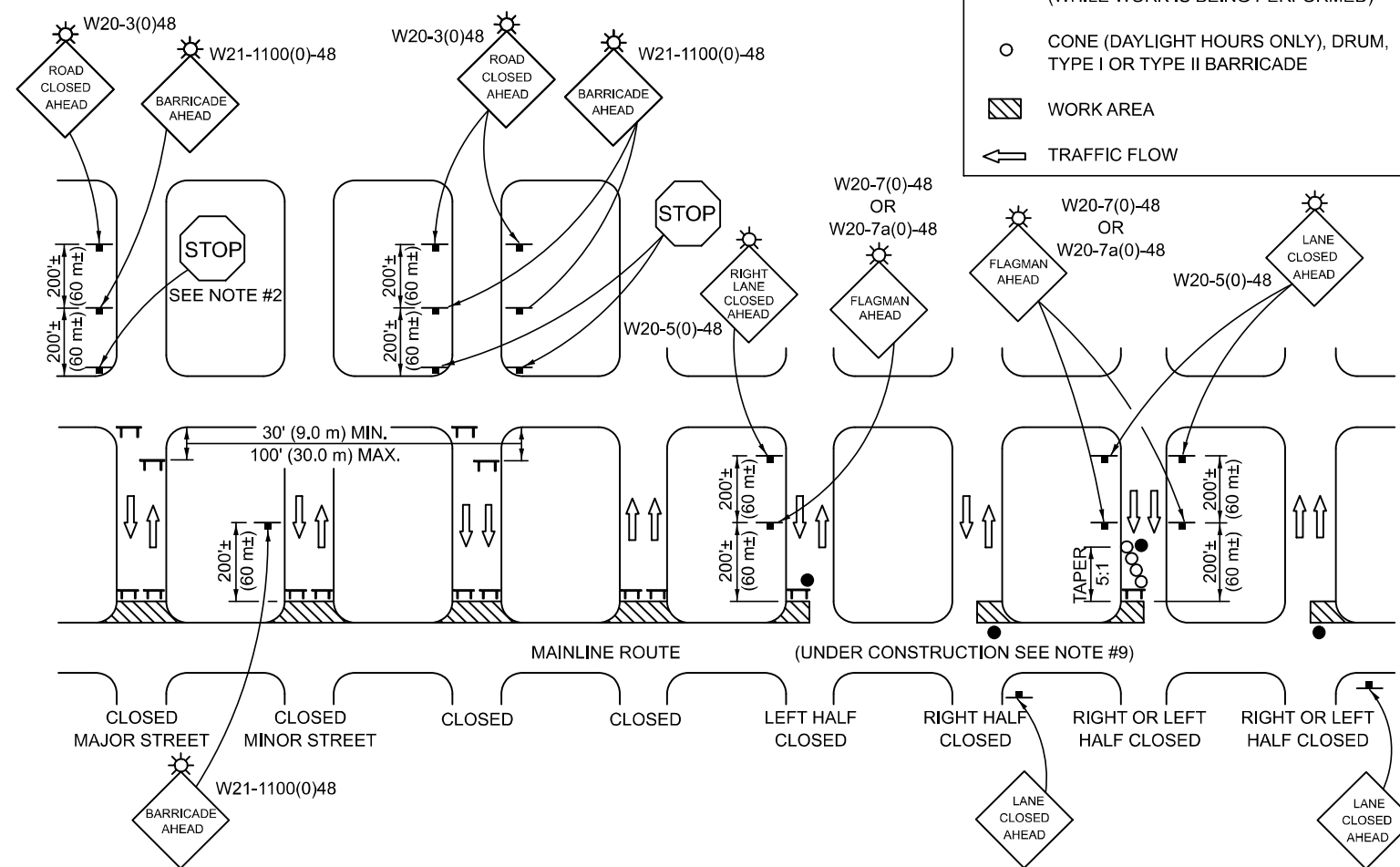
SYMBOLS	
	TYPE III BARRICADE (SEE NOTE 1)
	FLASHING AMBER LIGHT (TYPE A)



GENERAL NOTES

- TYPE III BARRICADES SHALL BE AS SHOWN ON STANDARD 701901 "TYPICAL APPLICATIONS OF TYPE III BARRICADES CLOSING A ROAD". EACH TYPE III BARRICADE SHALL HAVE TWO FLASHING AMBER LIGHTS MOUNTED ABOVE IT.
- IF THE ROAD IS OPEN TO LOCAL TRAFFIC OR EXCEEDS 1000' (300 m), ANOTHER SET OF TYPE III BARRICADES, EQUIPPED AS IN NOTE 1 ABOVE, SHALL BE PLACED AT EACH END OF THE WORK AREA.
- WHEN A STOP CONDITION EXISTS, NO SIGNS ARE REQUIRED IN ADVANCE OF THE "STOP" SIGN WHEN THE ROAD IS CLOSED WITHIN 100' (30 m) OF THE INTERSECTION.
- STANDARD 701901 SHALL APPLY FOR THE PLACEMENT & DESIGN OF TYPE III BARRICADES.
- IF A TYPE III BARRICADE WITH AN ATTACHED SIGN PANEL WHICH MEETS NCHRP 350 IS NOT AVAILABLE, THE SIGNS MAY BE MOUNTED ON AN NCHRP 350 TEMPORARY SIGN SUPPORT DIRECTLY IN FRONT OF THE BARRICADE.
- REFLECTORIZED STRIPING SHALL APPEAR ON BOTH SIDES OF THE TYPE III BARRICADES IF ROAD IS OPEN TO LOCAL TRAFFIC.
- ALL SIGNS SHALL BE POST MOUNTED IF THE CLOSURE TIME EXCEEDS FOUR DAYS.
- A MINIMUM OF TWO FLASHING LIGHTS SHALL BE USED AT NIGHT ON EACH APPROACH IN ADVANCE OF THE WORK AREA. FLASHING LIGHTS SHALL BE INSTALLED ABOVE THE FIRST TWO SIGNS IN THE SERIES.
- LONGITUDINAL DIMENSIONS MAY BE ADJUSTED SLIGHTLY TO FIT FIELD CONDITIONS.
- FORMS BT. 725 AND BT. 726 ARE REQUIRED.
- WHEN A SIDEROAD INTERSECTS THE HIGHWAY ON WHICH WORK IS BEING PERFORMED, ADDITIONAL TRAFFIC DEVICES SHALL BE ERECTED AND PROVIDED AS DIRECTED BY THE ENGINEER.
- AN ADDITIONAL SIGN MAY BE REQUIRED AT A MAJOR INTERSECTING ROAD IN ADVANCE OF THE CLOSURE. THE ADDITIONAL SIGN SHALL GIVE THE DISTANCE TO THE BARRICADE IN MILES OR FRACTIONS OF A MILE.

SYMBOLS	
	TYPE III BARRICADE (SEE NOTE)
	FLASHING LIGHT
	FLAGGER WITH TRAFFIC CONTROL SIGN (WHILE WORK IS BEING PERFORMED)
	CONE (DAYLIGHT HOURS ONLY), DRUM, TYPE I OR TYPE II BARRICADE
	WORK AREA
	TRAFFIC FLOW



GENERAL NOTES

- TYPE III BARRICADES SHALL BE AS SHOWN ON "TYPICAL APPLICATIONS OF TYPE III BARRICADES CLOSING A ROAD". EACH TYPE III BARRICADE SHALL HAVE TWO FLASHING AMBER LIGHTS MOUNTED ABOVE IT.
- WHERE A STOP CONDITION EXISTS, AS SHOWN ABOVE, WARNING SIGNS MAY BE OMITTED IN ADVANCE OF THE "STOP" SIGN.
- STANDARD 701901 SHALL APPLY FOR THE PLACEMENT & MANUFACTURE OF TYPE III BARRICADES.
- ALL SIGNS SHALL BE POST MOUNTED IF THE CLOSURE TIME EXCEEDS FOUR DAYS.
- ONE FLASHING LIGHT IS REQUIRED ABOVE EACH ADVANCE WARNING SIGN DURING HOURS OF DARKNESS.
- LONGITUDINAL DIMENSIONS MAY BE ADJUSTED SLIGHTLY TO FIT FIELD CONDITIONS.
- FORMS BT 725 AND BT 726 ARE REQUIRED.
- THE MAINLINE ROUTE TEMPORARY TRAFFIC CONTROL SHALL BE IN ACCORDANCE WITH THE PLANS, SPECIAL PROVISIONS AND STANDARD SPECIFICATIONS.
- ALL FLAGGERS REQUIRED AT SIDE ROADS AND ENTRANCES REMAINING OPEN TO TRAFFIC AND/OR ADDITIONAL BARRICADES REQUIRED BY THE ENGINEER TO CLOSE SIDE ROADS AND ENTRANCES WILL BE PAID FOR ACCORDING TO ARTICLE 109.04.

Note: All dimensions are in INCHES (millimeters) unless otherwise shown.

DISTRICT 5 DETAIL NO. 7020000

USER NAME = timothy.brandenburg	DESIGNED -	REVISED - 11/06
	DRAWN -	REVISED - 12/07
PLOT SCALE = 0.16666833' / in.	CHECKED -	REVISED - 09/09 KJT
PLOT DATE = 2/23/2024	DATE -	REVISED -

**STATE OF ILLINOIS
DEPARTMENT OF TRANSPORTATION**

**TRAFFIC CONTROL & PROTECTION DEVICES
(ROAD & SIDEROAD / STREET CLOSURES)**

SCALE: SHEET 1 OF 1 SHEETS STA. TO STA.

F.A. RTE.	SECTION	COUNTY	TOTAL SHEETS	SHEET NO.
VAR.	FY25 BRIDGE DECK SEALING	VARIOUS	22	22
CONTRACT NO. 70G76				
ILLINOIS FED. AID PROJECT				

MODEL: 70200000
FILE NAME: c:\p\work\wv\wv\brandenburg\090686170570G76-Sign-Detail_70200000.dgn