

STATE OF ILLINOIS  
DEPARTMENT OF TRANSPORTATION

FAI RTE	SECTION	COUNTY	TOTAL SHEETS	SHEET NO.
74 & 55	(57-8,57-22,57-23)BR-1	MCLEAN	25	1
		ILLINOIS	CONTRACT NO. 70H45	

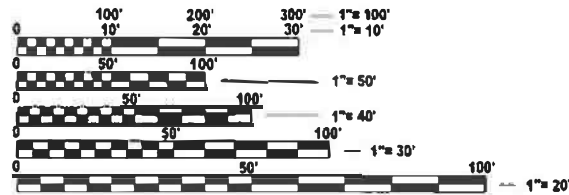
D-95-013-25

FOR INDEX OF SHEETS, SEE SHEET NO. 3

**PROPOSED  
HIGHWAY PLANS**

**FAI ROUTE (74 & 55)  
SECTION (57-8,57-22,57-23)BR-1  
PROJECT  
BRIDGE DECK REPAIRS, BRIDGE DECK OVERLAY  
MCLEAN COUNTY**

C-95-029-25



FULL SIZE PLANS HAVE BEEN PREPARED USING STANDARD ENGINEERING SCALES. REDUCED SIZED PLANS WILL NOT CONFORM TO STANDARD SCALES. IN MAKING MEASUREMENTS ON REDUCED PLANS, THE ABOVE SCALES MAY BE USED.

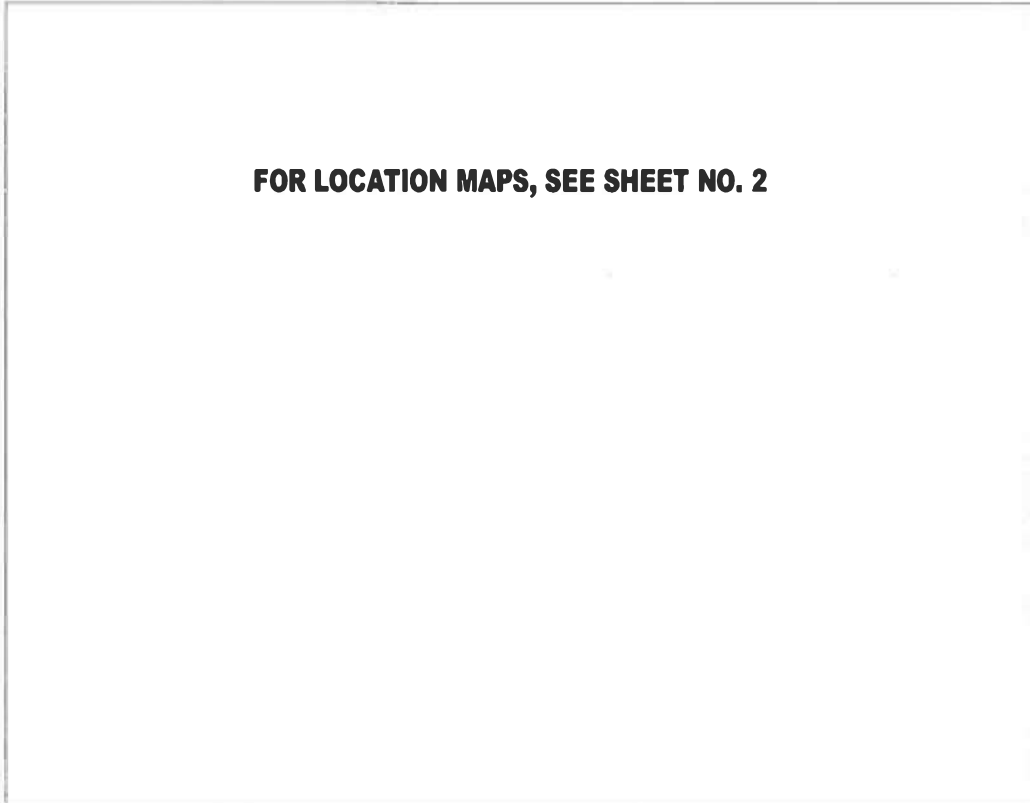
J.U.L.I.E.  
JOINT UTILITY LOCATION INFORMATION FOR EXCAVATION  
1-800-892-0123  
OR 811

**TOWNSHIP:**

- S.N. 057-0127: DOWNS
- S.N. 057-0132: EMPIRE
- S.N. 057-0161: DALE

**PROJECT ENGINEER: TIM BRANDENBURG  
PROJECT MANAGER: ERIC SHAWLER  
PHONE: (217) 465-4181**

**CONTRACT NO. 70H45**



GROSS LENGTH = N/A FT. = N/A MILE  
NET LENGTH = N/A FT. = N/A MILE

STATE OF ILLINOIS  
DEPARTMENT OF TRANSPORTATION

SUBMITTED November 19, 2024  
*[Signature]*  
REGIONAL ENGINEER

January 31, 2025  
*[Signature]*  
ENGINEER OF DESIGN AND ENVIRONMENT

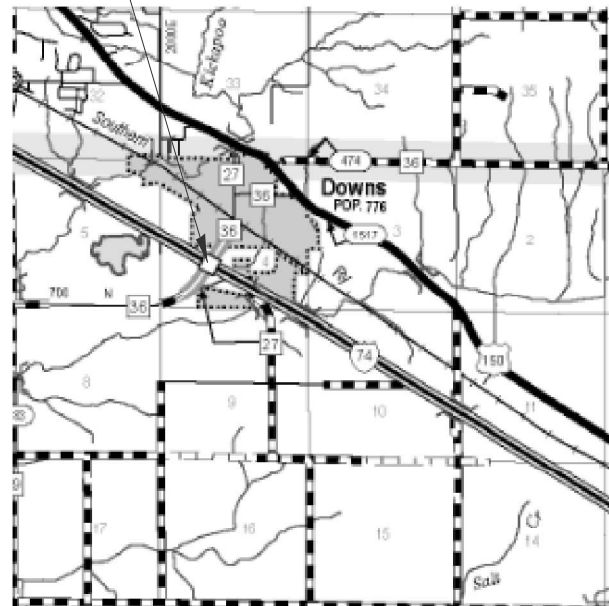
January 31, 2025  
*[Signature]*  
DIRECTOR OF HIGHWAYS PROJECT IMPLEMENTATION

**PRINTED BY THE AUTHORITY  
OF THE STATE OF ILLINOIS**

**LOCATION MAP # 1**  
**COUNTY HIGHWAY 36 OVER FAI-74 / (I-74) SOUTH OF DOWNS**  
**S.N. 057-0127 SOUTHEAST OF BLOOMINGTON**



EXISTING S.N. 057-0127  
 F.A.U. 6437 (CH-36)  
 OVER F.A.I. 74 (I-74)  
 PROTECTIVE SHIELD (PERMANENT)



R 3 E



**CURRENT TRAFFIC DATA**  
**FAU 6437 (CH 36)**

2024 ADT = 2,650  
 2044 ADT = 2,900

**CURRENT TRAFFIC DATA**  
**FAI-74 (I-74)**

2024 ADT = 21,600  
 2044 ADT = 23,800

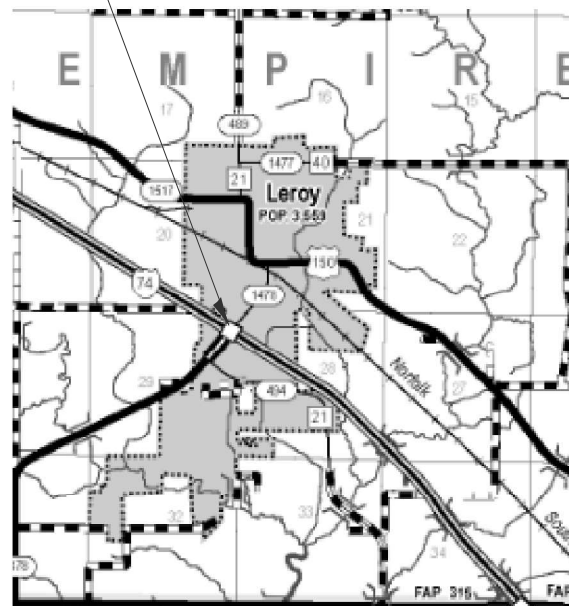
**DESIGN DESIGNATION**  
 MINOR ARTERIAL

**DESIGN DESIGNATION**  
 INTERSTATE

**LOCATION MAP # 2**  
**SOUTH CHESTNUT ST. OVER FAI-74 / (I-74) SOUTH OF LEROY**  
**S.N. 057-0132 SOUTHEAST OF BLOOMINGTON**



EXISTING S.N. 057-0132  
 F.A.S. 1478 (HWY. 942)  
 OVER F.A.I. 74 (I-74)  
 PROTECTIVE SHIELD (PERMANENT)



R 4 E



**CURRENT TRAFFIC DATA**  
**FAS 1478 (HWY 942)**

2024 ADT = 1,850  
 2044 ADT = 2,050

**DESIGN DESIGNATION**  
 MINOR ARTERIAL

**CURRENT TRAFFIC DATA**  
**FAI-74 (I-74)**

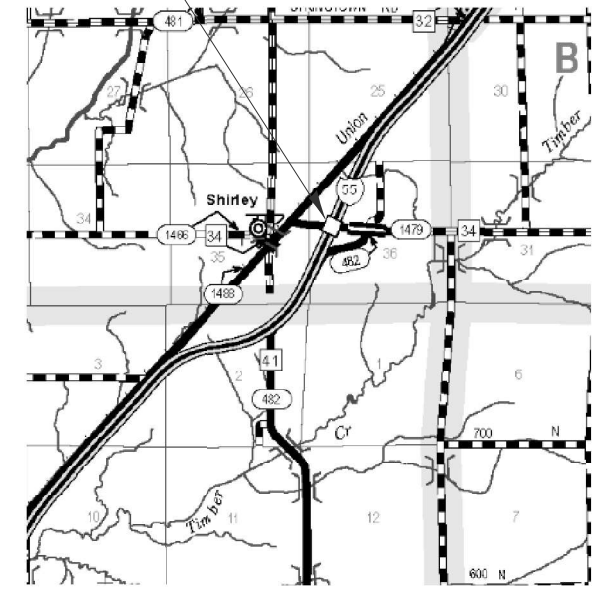
2024 ADT = 21,600  
 2044 ADT = 23,800

**DESIGN DESIGNATION**  
 INTERSTATE

**LOCATION MAP # 3**  
**COUNTY HIGHWAY 34 OVER FAI-55 / (I-55) EAST OF SHIRLEY**  
**S.N. 057-0161 SOUTHWEST OF BLOOMINGTON**



EXISTING S.N. 057-0161  
 F.A.U. 6434 (CH-34)  
 OVER F.A.I. 55 (I-55)  
 CONCRETE WEARING SURFACE



R 1 E



**CURRENT TRAFFIC DATA**  
**FAU 6434 (CH 34)**

2024 ADT = 950  
 2044 ADT = 1,050

**DESIGN DESIGNATION**  
 MINOR ARTERIAL

**CURRENT TRAFFIC DATA**  
**FAI-55 (I-55)**

2024 ADT = 22,100  
 2044 ADT = 24,300

**DESIGN DESIGNATION**  
 INTERSTATE

MODEL: Location Maps (Sheet)  
 FILE NAME: c:\p\work\ericshawleresd100818010570H45\_Sht\_Location\_Map.dgn

USER NAME = eric.shawler	DESIGNED -	REVISED -
	DRAWN - ESS	REVISED -
	CHECKED -	REVISED -
PLOT DATE = 11/15/2024	DATE -	REVISED -

**STATE OF ILLINOIS**  
**DEPARTMENT OF TRANSPORTATION**

<b>LOCATION MAPS</b>			
<b>S.N. 057-0127 S.N. 057-0132 S.N. 057-0161</b>			
SCALE:	SHEET 1	OF 1 SHEETS	STA. TO STA.

F.A.I. RTE.	SECTION	COUNTY	TOTAL SHEETS	SHEET NO.
74 & 55	(57-8,57-22,57-23)BR-1	MCLEAN	25	2
CONTRACT NO. 70H45				
ILLINOIS FED. AID PROJECT				

INDEX OF SHEETS

SHEET NO.	ITEM
1	COVER SHEET
2	LOCATION MAPS
3	INDEX OF SHEETS
3	LIST OF STANDARDS
3	GENERAL NOTES
4-5	SUMMARY OF QUANTITIES
6-9	STRUCTURE PLANS S.N. 057-0127
10-13	STRUCTURE PLANS S.N. 057-0132
14-24	STRUCTURE PLANS S.N. 057-0161
25	TRAFFIC CONTROL & PROTECTION DEVICES (ROAD & SIDE ROAD / STREET CLOSURES)

GENERAL NOTES

G.N.-105.09A

ALL ELEVATIONS SHOWN IN THE PLANS ARE BASED ON NORTH AMERICAN VERTICAL DATUM OF 1988. (NAVD 88)

REFLECTORIZED TEMPORARY MARKING TAPE SHALL BE PLACED THROUGHOUT THE TAPER, AND ALONGSIDE BOTH SIDES OF THE WORK AREA. EXISTING MARKINGS THAT CONFLICT WITH STAGED TRAFFIC MARKINGS SHALL BE BLACKED OUT. COST TO BLACKOUT EXISTING MARKINGS AND FOR THE PLACEMENT AND REMOVAL OF TEMPORARY MARKINGS SHALL BE INCLUDED WITH TRAFFIC CONTROL AND PROTECTION STANDARD 701401.

THERE ARE NO COMMITMENTS ASSOCIATED WITH THIS PROJECT.

LIST OF HIGHWAY STANDARDS

STANDARD NO.	DESCRIPTION
000001-08	STANDARD SYMBOLS, ABBREVIATIONS AND PATTERNS
001001-02	AREAS OF REINFORCEMENT BARS
001006	DECIMAL OF AN INCH AND FOOT
701006-05	OFF ROAD OPERATIONS, 2L, 2W, 15' TO 24" FROM EDGE OF PAVEMENT
701101-05	OFF ROAD OPERATIONS, MULTILANE, 15' TO 24" FROM EDGE OF PAVEMENT
701400-12	APPROACH TO LANE CLOSURE, FREEWAY / EXPRESSWAY
701401-13	LANE CLOSURE, FREEWAY / EXPRESSWAY
701406-13	LANE CLOSURE, FREEWAY / EXPRESSWAY, DAY OPERATIONS ONLY
701411-09	LANE CLOSURE, MULTILANE, ENTRANCE OR EXIT RAMP, FOR SPEED > 45MPH
701901-10	TRAFFIC CONTROL DEVICES
D5- 70200000	TRAFFIC CONTROL & PROTECTION DEVICES (ROAD & SIDE ROAD / STREET CLOSURES)

MODEL: Index Stand GN (Sheet)  
FILE NAME: c:\p\work\p\shawleresd1008180\0570H45\_Sht\_Ind-St-Gen.dgn

USER NAME = eric.shawler	DESIGNED -	REVISED -
	DRAWN -	REVISED -
	CHECKED -	REVISED -
PLOT DATE = 11/22/2024	DATE -	REVISED -

STATE OF ILLINOIS  
DEPARTMENT OF TRANSPORTATION

INDEX OF SHEETS, STANDARDS, GENERAL NOTES  
S.N. 057-0027 S.N. 057-0132 S.N. 057-0161

SCALE: SHEET 1 OF 1 SHEETS STA. TO STA.

F.A.I RTE.	SECTION	COUNTY	TOTAL SHEETS	SHEET NO.
74 & 55	(57-8,57-22,57-23)BR-1	MCLEAN	25	3
CONTRACT NO. 70H45				
ILLINOIS FED. AID PROJECT				

MODEL: Pay Items 01 [Sheet]  
 FILE NAME: c:\pwworking\shawleresd1008102\0570H45\_Sht\_S00.dgn

MCLEAN CO.	MCLEAN CO.	MCLEAN CO.
FAI 74 (I-74)	FAI 74 (I-74)	FAI 55 (I-55)
RURAL / INTERSTATE	RURAL / INTERSTATE	RURAL / INTERSTATE
BRIDGE DECK REPAIR	BRIDGE DECK REPAIR	BRIDGE DECK OVERLAY
S.N. 057-0127	S.N. 057-0132	S.N. 057-0161
100% STATE	100% STATE	100% STATE
0047	0047	0059

CODE NO.	ITEM	UNIT	TOTAL QUANTITY	QUANTITY	QUANTITY	QUANTITY
50102400	CONCRETE REMOVAL	CU YD	5.4	0.0	0.0	5.4
50157300	PROTECTIVE SHIELD	SQ YD	1,365.0	400.0	522.0	443.0
50300100	FLOOR DRAINS	EACH	8.0	0.0	0.0	8.0
50300255	CONCRETE SUPERSTRUCTURE	CU YD	5.4	0.0	0.0	5.4
50300260	BRIDGE DECK GROOVING	SQ YD	1,232.0	0.0	0.0	1,232.0
50300300	PROTECTIVE COAT	SQ YD	1,392.4	0.0	0.0	1,392.4
67000500	ENGINEER'S FIELD OFFICE, TYPE B	CAL MO	3.0	0.5	0.5	2.0
67100100	MOBILIZATION	L SUM	1.0	0.3	0.3	0.4
70100420	TRAFFIC CONTROL AND PROTECTION, STANDARD 701411	EACH	6.0	2.0	2.0	2.0
70100700	TRAFFIC CONTROL AND PROTECTION, STANDARD 701406	L SUM	1.0	0.3	0.3	0.4
70100800	TRAFFIC CONTROL AND PROTECTION, STANDARD 701401	L SUM	1.0	0.0	0.0	1.0
70107025	CHANGEABLE MESSAGE SIGN	CAL DA	40.0	6.0	6.0	28.0
X5017311	REMOVAL OF EXISTING PROTECTIVE SHIELD	SQ YD	53.0	53.0	0.0	0.0
Z0004556	HOT-MIX ASPHALT SURFACE REMOVAL (DECK)	SQ YD	1,351.3	0.0	0.0	1,351.3

\* SPECIALTY ITEM

USER NAME = eric.shawler	DESIGNED -	REVISED -
	DRAWN -	REVISED -
	CHECKED -	REVISED -
PLOT DATE = 11/22/2024	DATE -	REVISED -

**STATE OF ILLINOIS  
 DEPARTMENT OF TRANSPORTATION**

<b>SUMMARY OF QUANTITIES</b>			
<b>S.N. 057-0127 S.N. 057-0132 S.N. 057-0161</b>			
SCALE:	SHEET 1	OF 2 SHEETS	STA. TO STA.

FAI RTE.	SECTION	COUNTY	TOTAL SHEETS	SHEET NO.
74 & 55	(57-8,57-22,57-23)BR-1	MCLEAN	25	4
ILLINOIS FED. AID PROJECT			CONTRACT NO. 70H45	



The Existing Structure was built in 1968 by the State of Illinois as F.A.I. Route 74, Section (57-22HB-1 at Station 1090+44.29 in McLean Co. The structure is a 4 span concrete deck on steel beams, spread footing piers with creasoted piles, & spill through abutments with a back to back abutment length of 231'- 1 1/4". The structure has an out to out width of 58'-0", consisting of 2 - 14' lanes, 2 - 4'-3" shoulders, divided by a 18' vaulted median.

Method of Construction: Lane Closure, Freeway/Expressway Day Only (FAI-74)

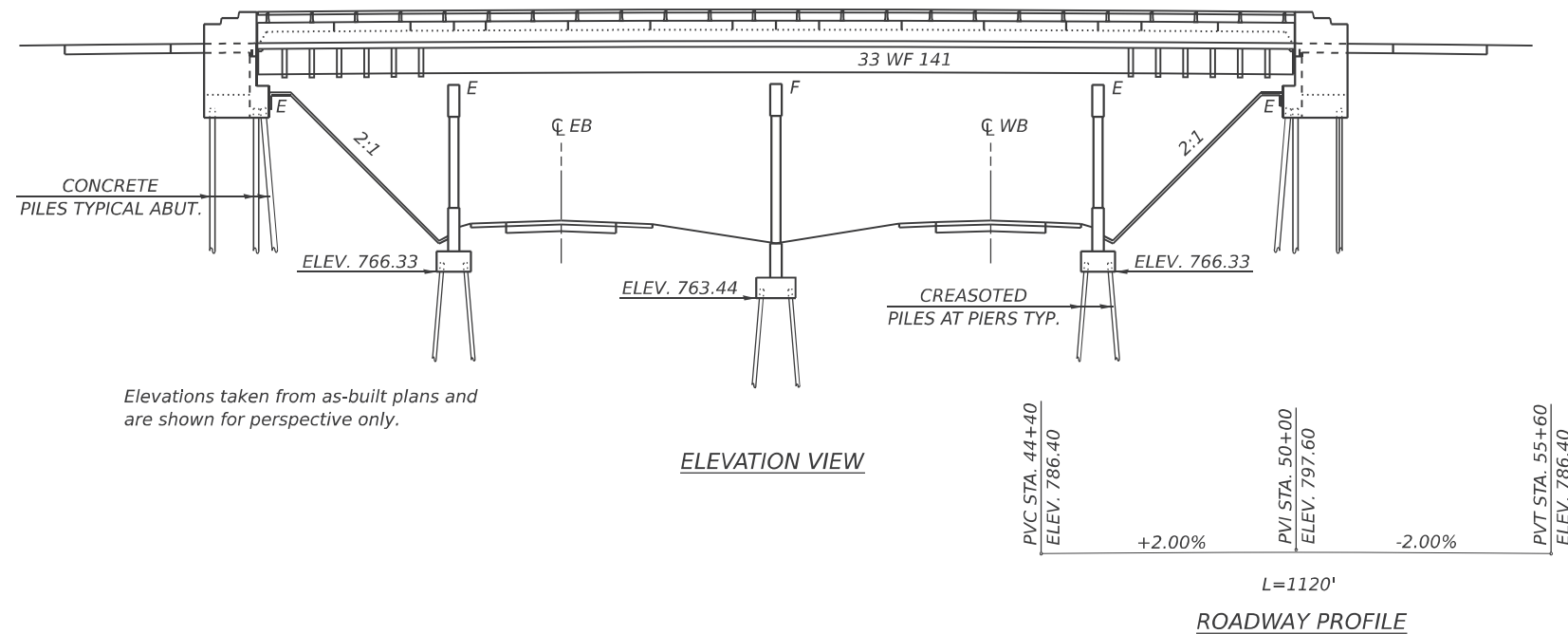
**LOCATION #1**  
**GENERAL PLAN & ELEVATION**  
**S.N. 057-0127**

**SCOPE OF WORK**

1. REMOVAL OF EXISTING PROTECTIVE SHIELD.
2. PLACE PERMANENT PROTECTIVE SHIELD.

**TOTAL BILL OF MATERIALS**

ITEM	UNIT	TOTAL
PROTECTIVE SHIELD	SQ YD	400.0
REMOVAL OF EXISTING PROTECTIVE SHIELD	SQ YD	53.0



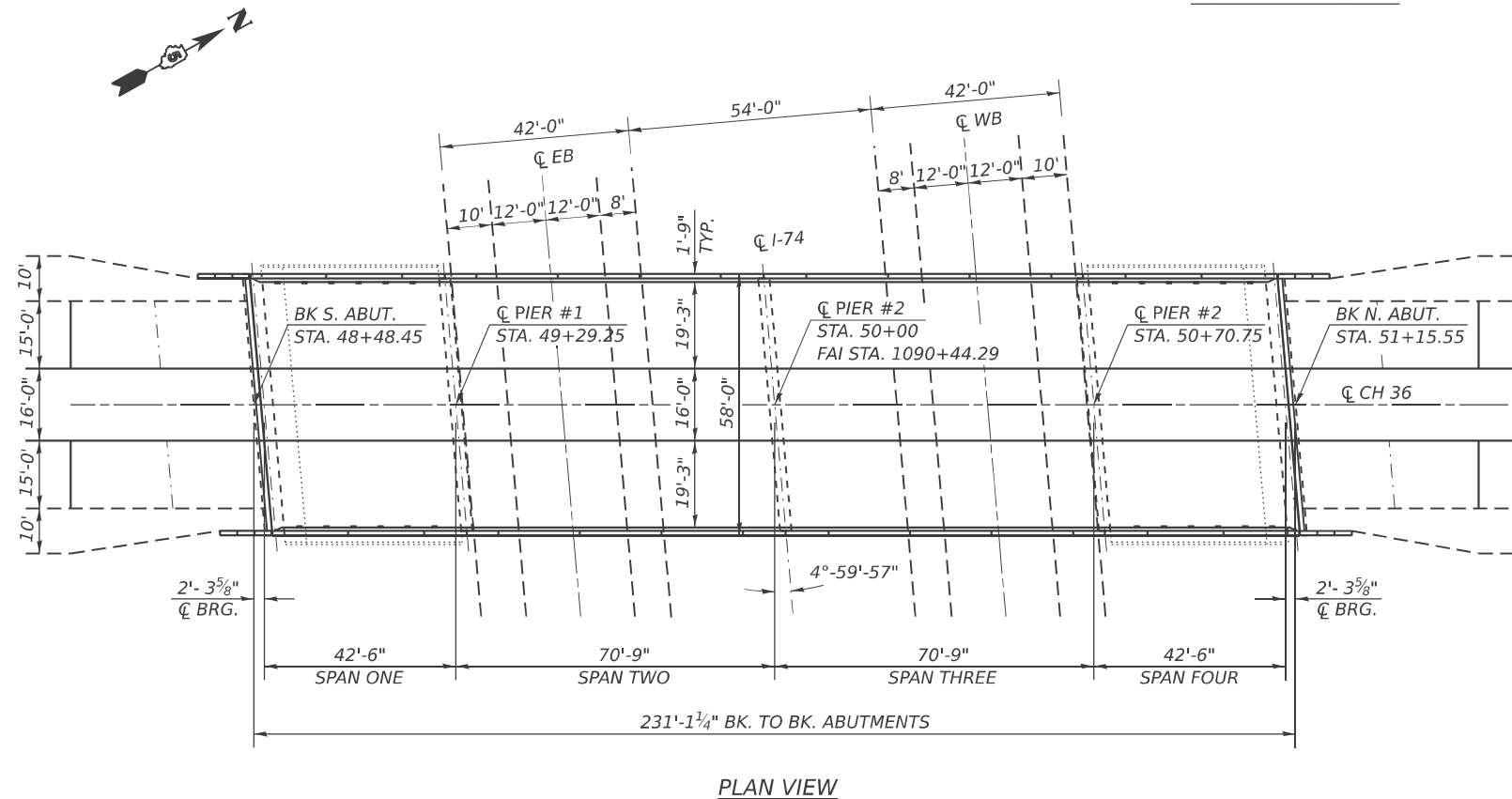
Elevations taken from as-built plans and are shown for perspective only.

**ELEVATION VIEW**

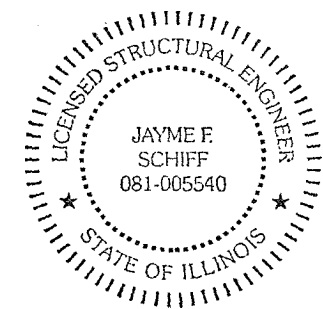
**ROADWAY PROFILE**

**GENERAL NOTES**

PLAN DIMENSIONS AND DETAILS RELATIVE TO THE EXISTING PLANS ARE SUBJECT TO NOMINAL CONSTRUCTION VARIATIONS. THE CONTRACTOR SHALL FIELD VERIFY EXISTING DIMENSIONS AND DETAILS AFFECTING NEW CONSTRUCTION AND MAKE NECESSARY APPROVED ADJUSTMENTS PRIOR TO CONSTRUCTION OR ORDERING OF MATERIALS. SUCH VARIATIONS SHALL NOT BE CAUSE FOR ADDITIONAL COMPENSATION FOR A CHANGE IN SCOPE OF WORK, HOWEVER, THE CONTRACTOR WILL BE PAID FOR THE QUANTITY ACTUALLY FURNISHED AT THE UNIT PRICE BID FOR THE WORK.



**PLAN VIEW**



EXPIRES 11-30-2026

*Jayme F. Schiff*

MODEL: S:\0570127-01 (Sheet)  
 FILE NAME: c:\p\work\civil\shawn\res\1008180\0570127.dgn

USER NAME = eric.shawler	DESIGNED -	REVISED -
	DRAWN - ESS	REVISED -
	CHECKED - TJB	REVISED -
PLOT DATE = 11/15/2024	DATE -	REVISED -

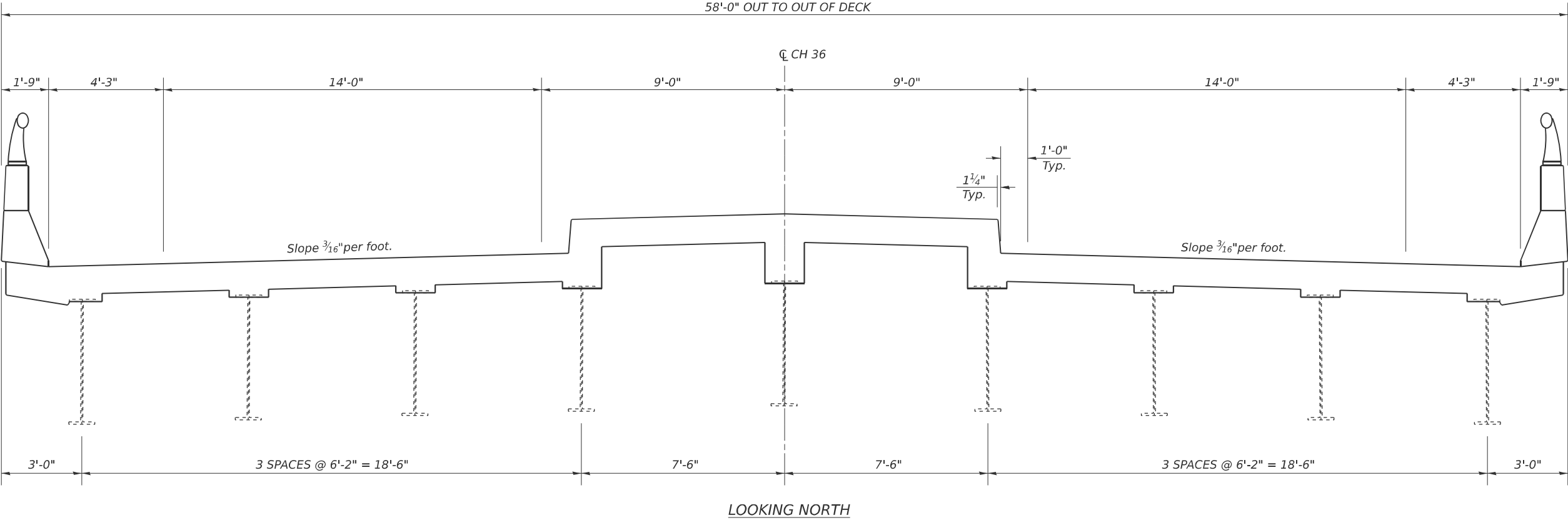
**STATE OF ILLINOIS**  
**DEPARTMENT OF TRANSPORTATION**

**GENERAL PLAN & ELEVATION**  
**S.N. 057-0127**

SCALE: SHEET 1 OF 4 SHEETS STA. TO STA.

F.A.I. RTE.	SECTION	COUNTY	TOTAL SHEETS	SHEET NO.
74 & 55	(57-8,57-22,57-23)BR-1	MCLEAN	25	6
CONTRACT NO. 70H45				
ILLINOIS FED. AID PROJECT				

**EXISTING DECK CROSS SECTION**  
**S.N. 057-0127**



MODEL: S:\0570127-2 (Sheet)  
FILE NAME: c:\p\work\ericshawleresd1008180\0570127.dgn

USER NAME = eric.shawler	DESIGNED -	REVISED -
	DRAWN - ESS	REVISED -
	CHECKED - TJB	REVISED -
PLOT DATE = 11/15/2024	DATE -	REVISED -

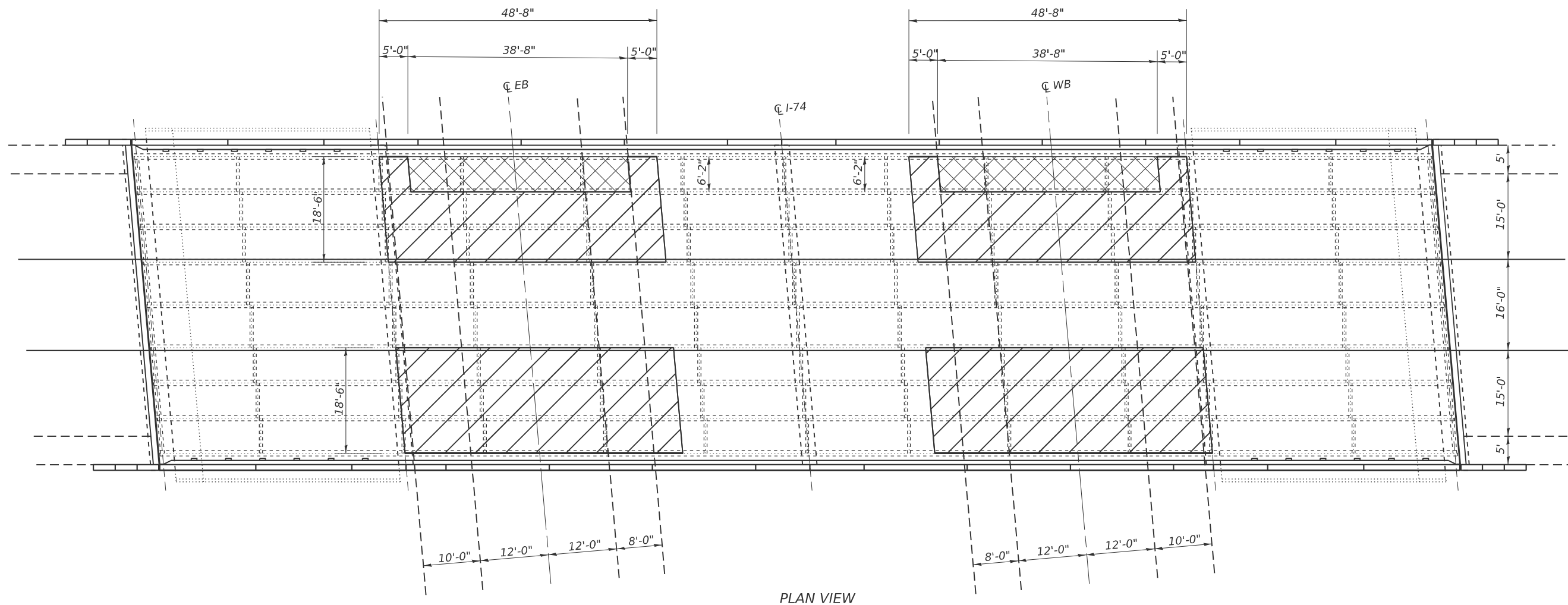
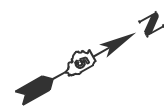
**STATE OF ILLINOIS**  
**DEPARTMENT OF TRANSPORTATION**

**DECK CROSS SECTION**  
**S.N. 057-0127**

SCALE: SHEET 2 OF 4 SHEETS STA. TO STA.

F.A.I. RTE.	SECTION	COUNTY	TOTAL SHEETS	SHEET NO.
74 & 55	(57-8,57-22,57-23)BR-1	MCLEAN	25	7
CONTRACT NO. 70H45				
ILLINOIS FED. AID PROJECT				

**PROTECTIVE SHIELD**  
**S.N. 057-0127**



PLAN VIEW

**LEGEND**



REMOVAL OF EXISTING PROTECTIVE SHIELD  
& PROTECTIVE SHIELD



PROTECTIVE SHIELD

**NOTES**

PROTECTIVE SHIELD PLACED WITH THIS PROJECT WILL REMAIN IN PLACE.

**BILL OF MATERIALS**

ITEM	UNIT	TOTAL
PROTECTIVE SHIELD	SQ YD	400.0
REMOVAL OF EXISTING PROTECTIVE SHIELD	SQ YD	53.0

MODEL: S:\0570127-3 (Sheet)  
FILE NAME: c:\p\work\ericshawler\0570127.dgn

USER NAME = eric.shawler	DESIGNED -	REVISED -
	DRAWN - ESS	REVISED -
	CHECKED - TJB	REVISED -
PLOT DATE = 11/15/2024	DATE -	REVISED -

**STATE OF ILLINOIS**  
**DEPARTMENT OF TRANSPORTATION**

**PROTECTIVE SHIELD**  
**S.N. 057-0127**

SCALE: SHEET 3 OF 4 SHEETS STA. TO STA.

F.A.I RTE.	SECTION	COUNTY	TOTAL SHEETS	SHEET NO.
74 & 55	(57-8,57-22,57-23)BR-1	MCLEAN	25	8
CONTRACT NO. 70H45				
ILLINOIS FED. AID PROJECT				



STATE OF ILLINOIS  
DEPARTMENT OF PUBLIC WORKS & BUILDINGS  
DIVISION OF HIGHWAYS

DATE	SECTION	COUNTY	TOTAL SHEETS	SHEET NO.
5-7-22	MC LEAN	24	10	13 SHEETS

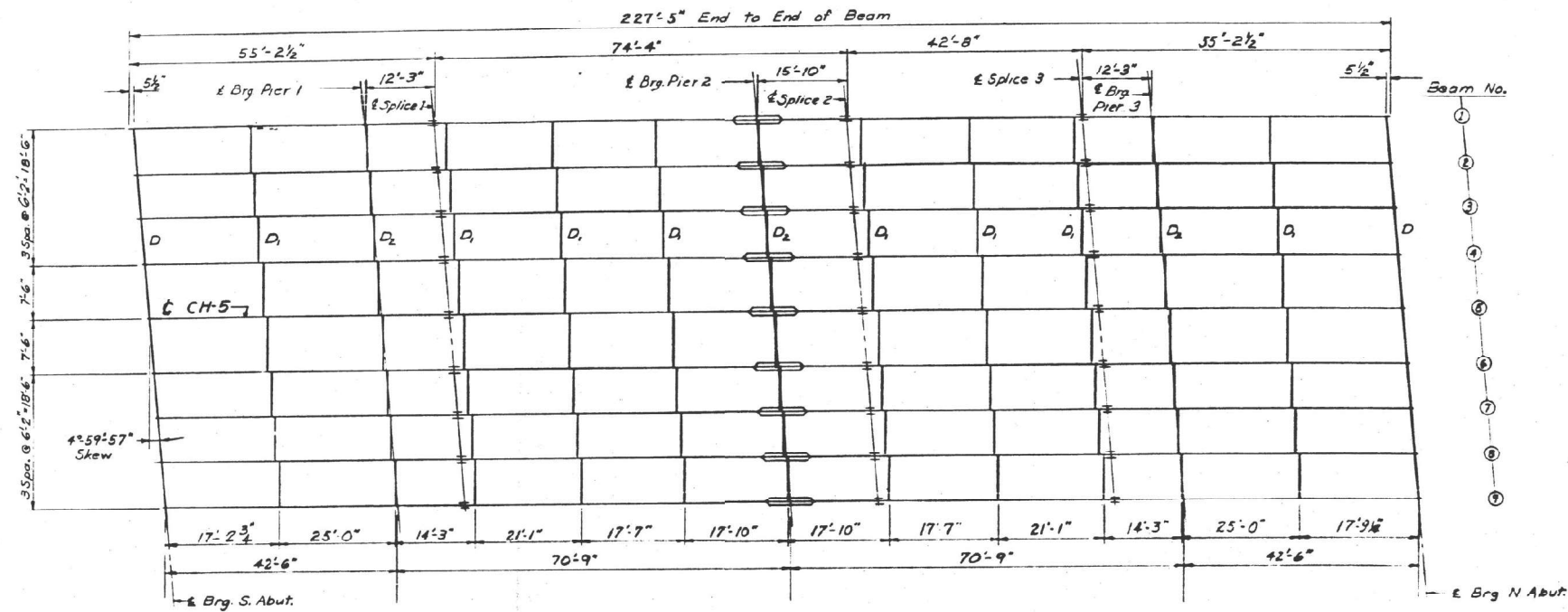


TABLE OF MOMENTS AND REACTIONS - INTERIOR BEAM

MOMENTS												REACTIONS				
4Sp1	Pier 1	5Sp2	Pier 2	5Sp3	Pier 3	6Sp4	S.Abut.	Pier 1	Pier 2	Pier 3	N.Abut.					
D.L.	+84.9	-313	+219	-434	+219	-313	+84.9	12.6	59.0	70.1	59.0	12.6				
L.L.	+231	-264	+339	-303	+339	-264	+231	30.1	44.1	42.8	44.1	30.1				
Imp.	+69	-72	+86	-83	+86	-72	+69	3.5	8.4	8.0	8.4	9.8				
Total	+384.9	-649	+644	-820	+644	-649	+384.9	52.5	111.5	120.9	111.5	52.5				

FASCIA BEAM

D.L.	L.L.	Imp.	Total
+118	-434	+303	-600
+17.5	81.6	97.0	81.6
+153	-208	+268	-220
+23.8	34.8	33.8	34.8
+55	-57	+68	-86
+7.8	5.6	6.3	6.6
Total	+356	-699	+639
49.1	123.0	137.1	123.0

MEDIAN BEAM

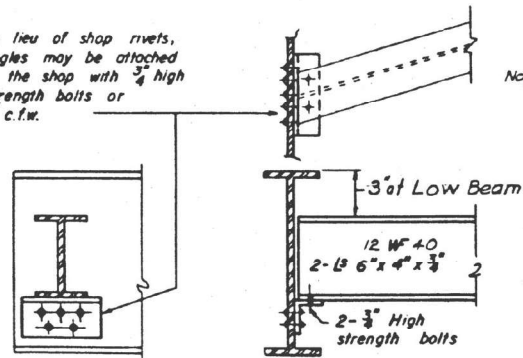
D.L.	L.L.	Imp.	Total
+105	-387	+270	-540
+15.6	72.9	86.5	72.9
+90	-123	+132	-112
+11.7	17.2	16.7	17.2
+27	-28	+34	-22
+3.8	3.4	3.1	3.4
Total	+222	-518	+436
31.1	93.5	106.3	93.5

ELEVATION TOP OF WF

BEAM LOCATION	Beam 1	Beam 2	Beam 3	Beam 4	Beam 5	Beam 6	Beam 7	Beam 8	Beam 9
6 Brg. S. Abut.	790.67	790.77	790.87	790.96	791.08	790.96	790.87	790.77	790.67
6 Brg. Pier 1	790.80	790.90	791.01	791.09	791.21	791.09	791.01	790.90	790.80
6 Splice 1	790.84	790.94	791.04	791.13	791.25	791.13	791.04	790.94	790.84
6 Brg. Pier 2	790.89	790.99	791.10	791.18	791.30	791.18	791.10	790.99	790.89
6 Splice 2	790.90	791.00	791.10	791.19	791.31	791.19	791.10	791.00	790.90
6 Splice 3	790.84	790.94	791.04	791.13	791.25	791.13	791.04	790.94	790.84
6 Brg. Pier 3	790.80	790.90	791.01	791.09	791.21	791.09	791.01	790.90	790.80
6 Brg. N. Abut.	790.67	790.77	790.87	790.96	791.08	790.96	790.87	790.77	790.67

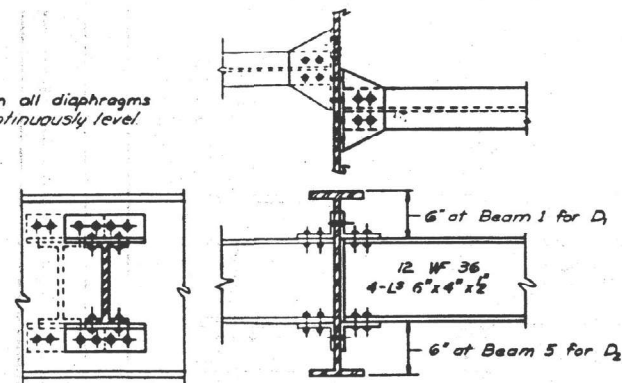
FRAMING PLAN  
All Beams are 33WF141

In lieu of shop rivets, angles may be attached in the shop with 3/4 high strength bolts or 4 c.f.w.

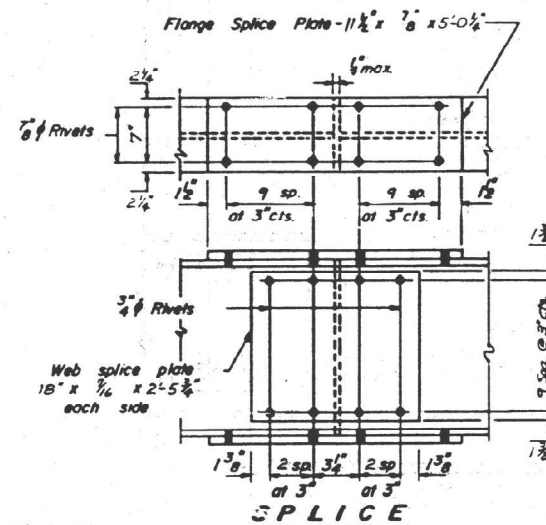


DIAPHRAGM D  
16 Required

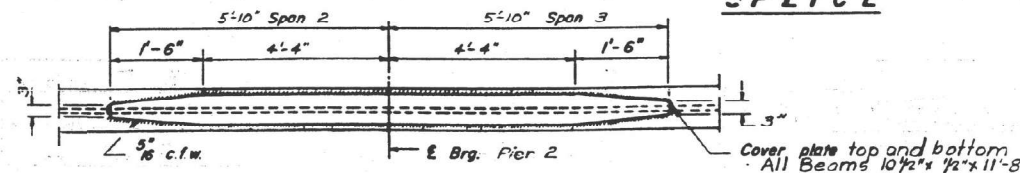
Note: Run all diaphragms continuously level



DIAPHRAGM D1 & D2  
64 - Required for D1  
24 - Required for D2



SPLICE



COVER PLATE

DESIGNED	T.W.E.
CHECKED	W.H.L.
DRAWN	T.W.E.
CHECKED	W.D.V.

I-2-CD 9-1-65

STRUCTURAL STEEL  
F.A.I. RT. 74 SEC. 57-22HB-1  
MC LEAN COUNTY  
STATION 1090+44.29

MODEL: SK\_0570127-04 (Sheet)  
FILE NAME: c:\pwworking\shawleresd100818010570145\_Sht\_Plans\_057-0127.dgn

USER NAME	= eric.shawler
DESIGNED	-
DRAWN	- ESS
CHECKED	- TJB
DATE	-
PLOT DATE	= 11/15/2024

DESIGNED	-
REVISIONS	-
REVISIONS	-
REVISIONS	-
REVISIONS	-

DESIGNED	-
REVISIONS	-
REVISIONS	-
REVISIONS	-
REVISIONS	-

STATE OF ILLINOIS  
DEPARTMENT OF TRANSPORTATION

AS-BUILT (INFORMATION ONLY)  
S.N. 057-0127

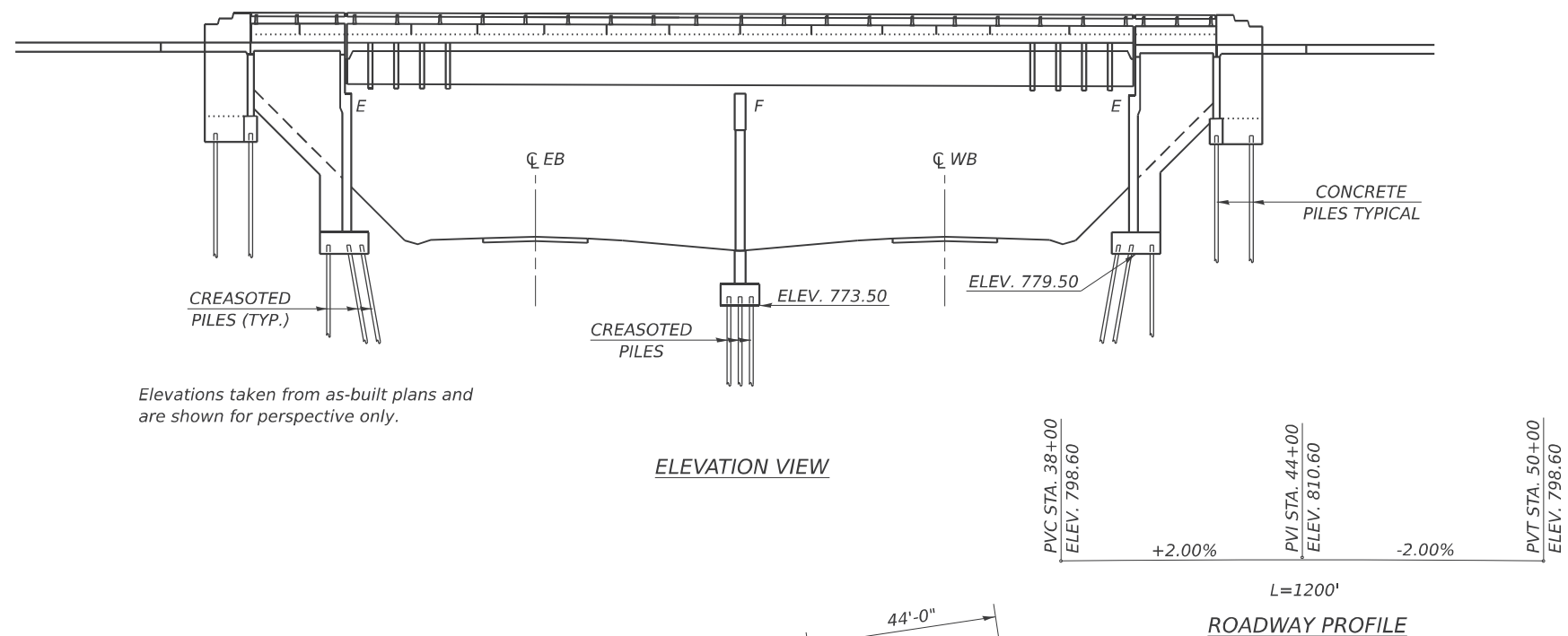
SCALE: SHEET 4 OF 4 SHEETS STA. TO STA.

F.A.I. RTE.	SECTION	COUNTY	TOTAL SHEETS	SHEET NO.
74 & 55	(57-8.57-22.57-23)BR-1	MCLEAN	25	9
CONTRACT NO. 70H45				
ILLINOIS FED. AID PROJECT				

The Existing Structure was built in 1970 by the State of Illinois as F.A.I. Route 74, Section (57-23HB-1 at Station 308+57.53 in McLean Co. The structure is a 2 span concrete deck on steel beams, spread footing pier with creasoted piles, & vaulted abutments with a back to back abutment length of 186'-0". The structure has an out to out width of 68'-0", consisting of 2 - 14' lanes, 2 - 9'-3" shoulders, divided by a 17" vaulted median.

Method of Construction: Lane Closure, Freeway/Expressway Day Only (FAI-74)

**LOCATION #2**  
**GENERAL PLAN & ELEVATION**  
**S.N. 057-0132**



**SCOPE OF WORK**

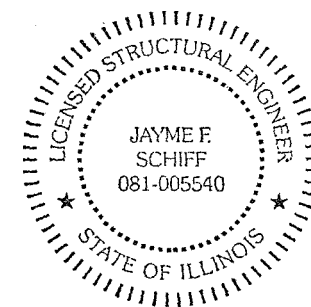
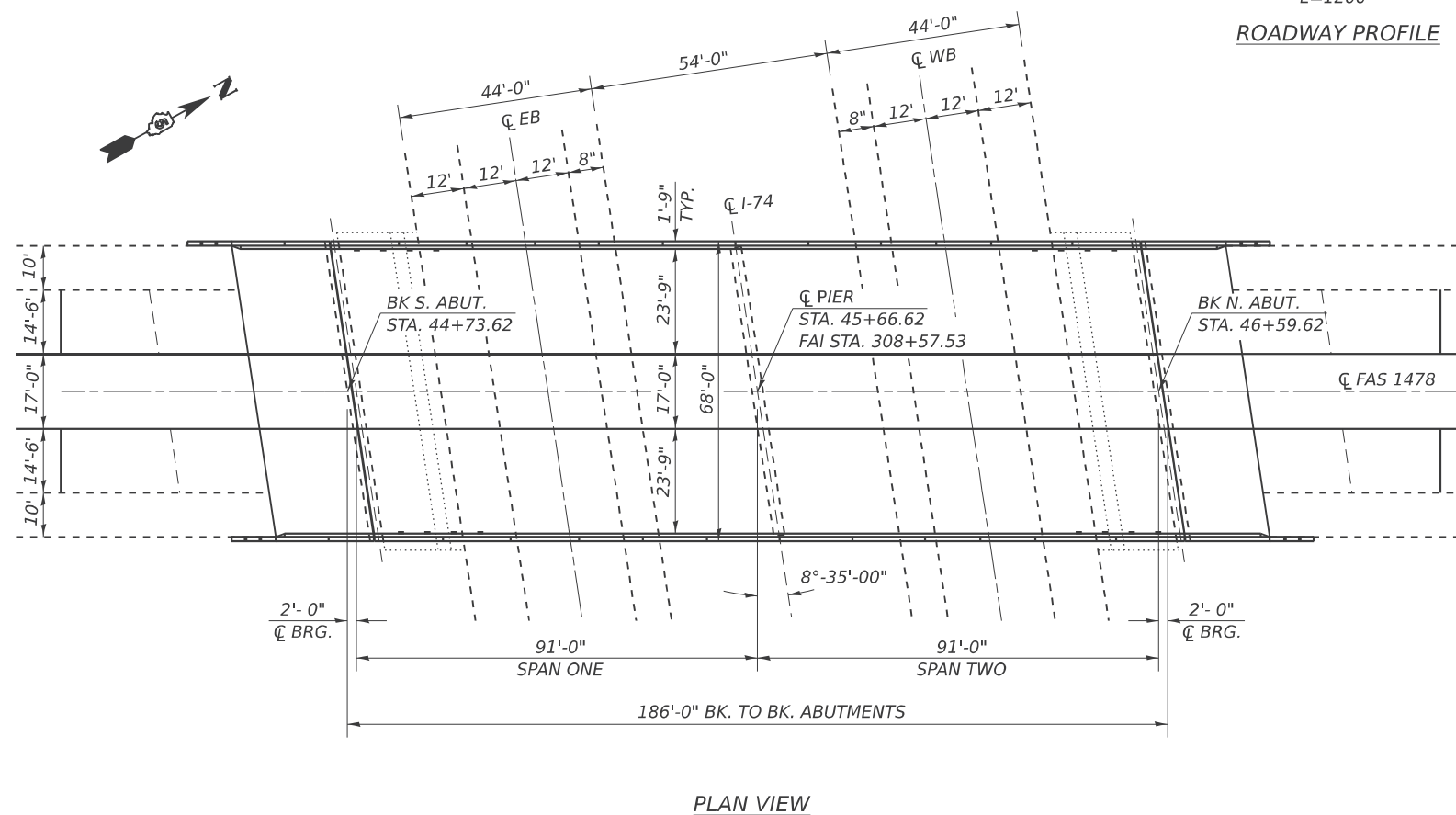
1. PLACE PERMANENT PROTECTIVE SHIELD.

**TOTAL BILL OF MATERIALS**

ITEM	UNIT	TOTAL
PROTECTIVE SHIELD	SQ YD	522.0

**GENERAL NOTES**

PLAN DIMENSIONS AND DETAILS RELATIVE TO THE EXISTING PLANS ARE SUBJECT TO NOMINAL CONSTRUCTION VARIATIONS. THE CONTRACTOR SHALL FIELD VERIFY EXISTING DIMENSIONS AND DETAILS AFFECTING NEW CONSTRUCTION AND MAKE NECESSARY APPROVED ADJUSTMENTS PRIOR TO CONSTRUCTION OR ORDERING OF MATERIALS. SUCH VARIATIONS SHALL NOT BE CAUSE FOR ADDITIONAL COMPENSATION FOR A CHANGE IN SCOPE OF WORK, HOWEVER, THE CONTRACTOR WILL BE PAID FOR THE QUANTITY ACTUALLY FURNISHED AT THE UNIT PRICE BID FOR THE WORK.



EXPIRES 11-30-2026

*Jayme F. Schiff*

MODEL: S:\0570132-01 (Sheet)  
 FILE NAME: c:\p\work\shiff\shiff\res\1008180\0570132.dgn

USER NAME = eric.shawler	DESIGNED -	REVISED -
	DRAWN - ESS	REVISED -
	CHECKED - TJB	REVISED -
PLOT DATE = 11/15/2024	DATE -	REVISED -

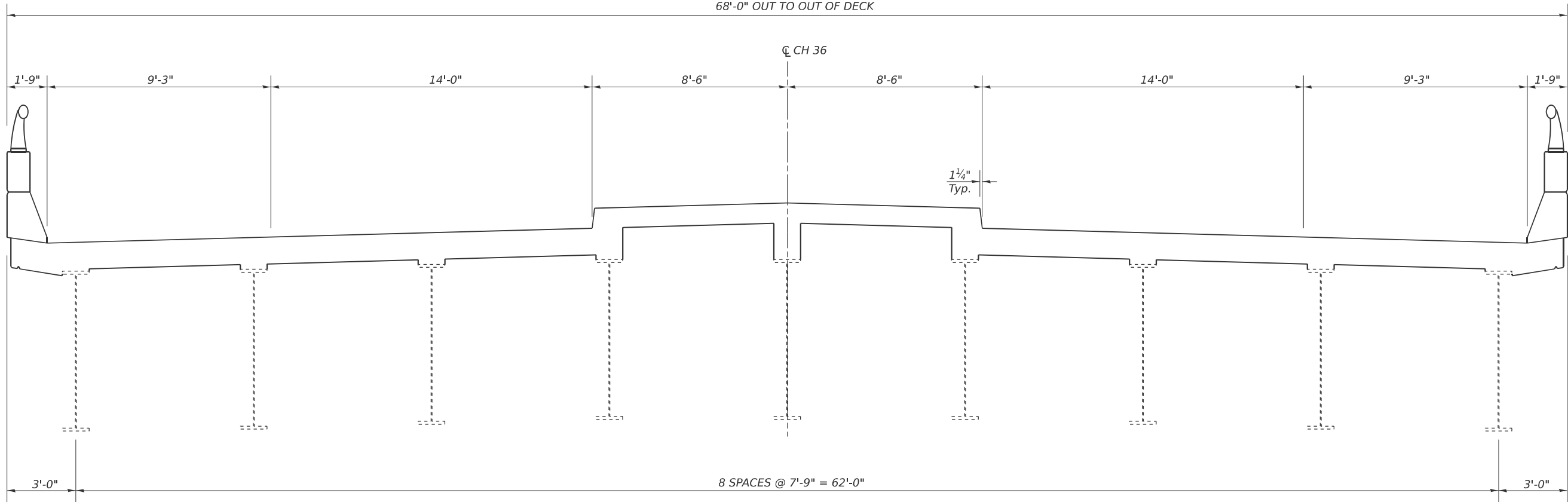
**STATE OF ILLINOIS**  
**DEPARTMENT OF TRANSPORTATION**

**GENERAL PLAN & ELEVATION**  
**S.N. 057-0132**

SCALE: SHEET 1 OF 4 SHEETS STA. TO STA.

F.A.I. RTE.	SECTION	COUNTY	TOTAL SHEETS	SHEET NO.
74 & 55	(57-8,57-22,57-23)BR-1	MCLEAN	25	10
CONTRACT NO. 70H45				
ILLINOIS FED. AID PROJECT				

**EXISTING DECK CROSS SECTION**  
**S.N. 057-0132**



LOOKING NORTH

MODEL: S:\\_0570132-2 (Sheet)  
FILE NAME: c:\p\work\ericshawleresd1008180\0570132\_Sht\_Plans\_057-0132.dgn

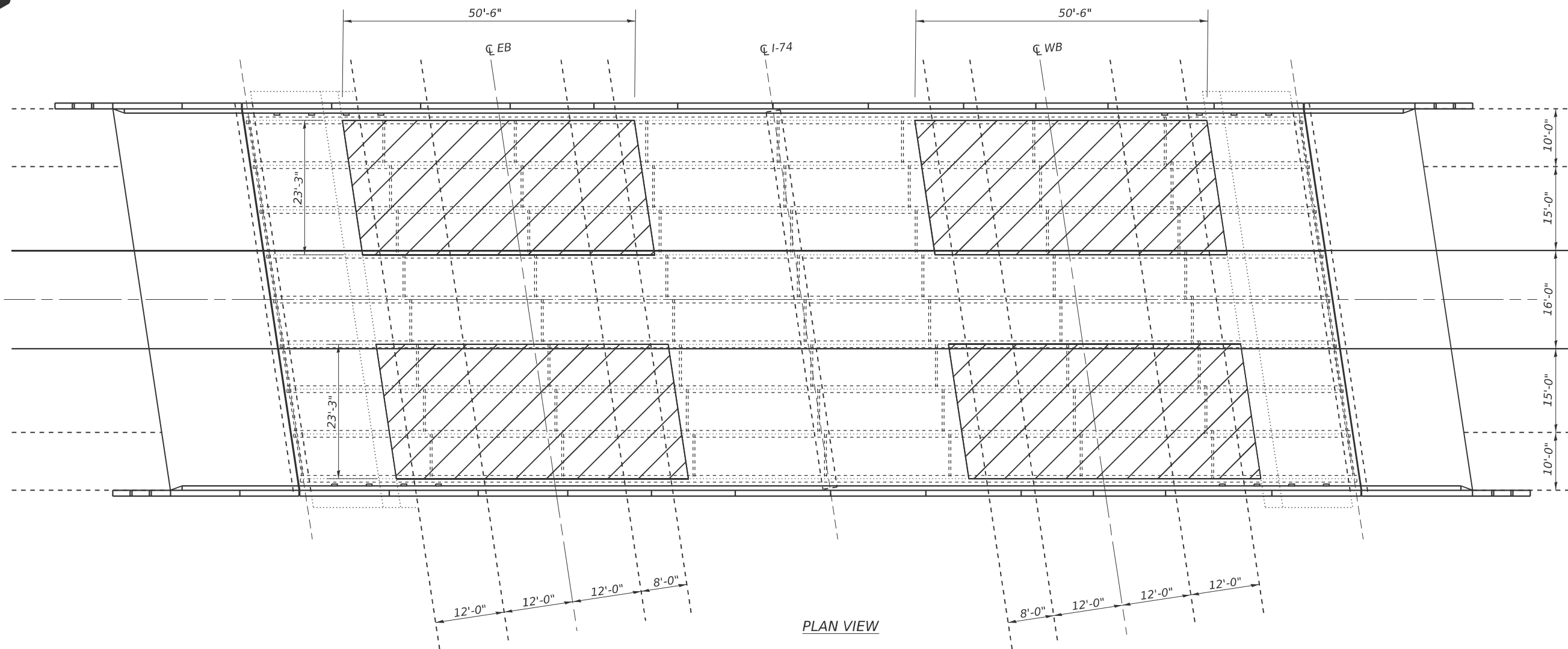
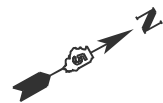
USER NAME = eric.shawler	DESIGNED -	REVISED -
	DRAWN - ESS	REVISED -
	CHECKED - TJB	REVISED -
PLOT DATE = 11/15/2024	DATE -	REVISED -

**STATE OF ILLINOIS**  
**DEPARTMENT OF TRANSPORTATION**

<b>DECK CROSS SECTION</b>			
<b>S.N. 057-0132</b>			
SCALE:	SHEET 2	OF 4 SHEETS	STA. TO STA.

F.A.I RTE.	SECTION	COUNTY	TOTAL SHEETS	SHEET NO.
74 & 55	(57-8,57-22,57-23)BR-1	MCLEAN	25	11
CONTRACT NO. 70H45				
ILLINOIS FED. AID PROJECT				

**PROTECTIVE SHIELD**  
S.N. 057-0132



PLAN VIEW

**LEGEND**



PROTECTIVE SHIELD

**BILL OF MATERIALS**

ITEM	UNIT	TOTAL
PROTECTIVE SHIELD	SQ YD	522.0

MODEL: S:\0570132-3 (Sheet)  
FILE NAME: c:\p\work\pawid\shawleresd1008180\0570H45\_Sht\_Plans\_057-0132.dgn

USER NAME = eric.shawler	DESIGNED -	REVISED -
	DRAWN - ESS	REVISED -
	CHECKED - TJB	REVISED -
PLOT DATE = 11/15/2024	DATE -	REVISED -

**STATE OF ILLINOIS**  
**DEPARTMENT OF TRANSPORTATION**

**PROTECTIVE SHIELD**  
**S.N. 057-0132**

SCALE: SHEET 3 OF 4 SHEETS STA. TO STA.

F.A.I RTE.	SECTION	COUNTY	TOTAL SHEETS	SHEET NO.
74 & 55	(57-8,57-22,57-23)BR-1	MCLEAN	25	12
CONTRACT NO. 70H45				
ILLINOIS FED. AID PROJECT				



The Existing Structure was built in 1976 by the State of Illinois as F.A.I. Route 55, Section (57-8HB-1 at Station 518+69.93 in McLean Co. The structure is a 2 span concrete deck on steel beams, spread footing pier with creasoted piles, & vaulted abutments with a back to back approach bents length of 270'-0". The structure has an out to out width of 68'-0", consisting of 2 - 14' lanes, 2 - 9'-3" shoulders, divided by a 17' vaulted median. In 2001 a Bridge Deck Overlay was completed with Contract 86993. Repairs consisted of deck patching, new joints, abutment bearing replacement, deck drains extended, substructure repairs and a 2" HMA Overlay.

Method of Construction: Stage Construction FAI-55 & Road Closure C.H. 34

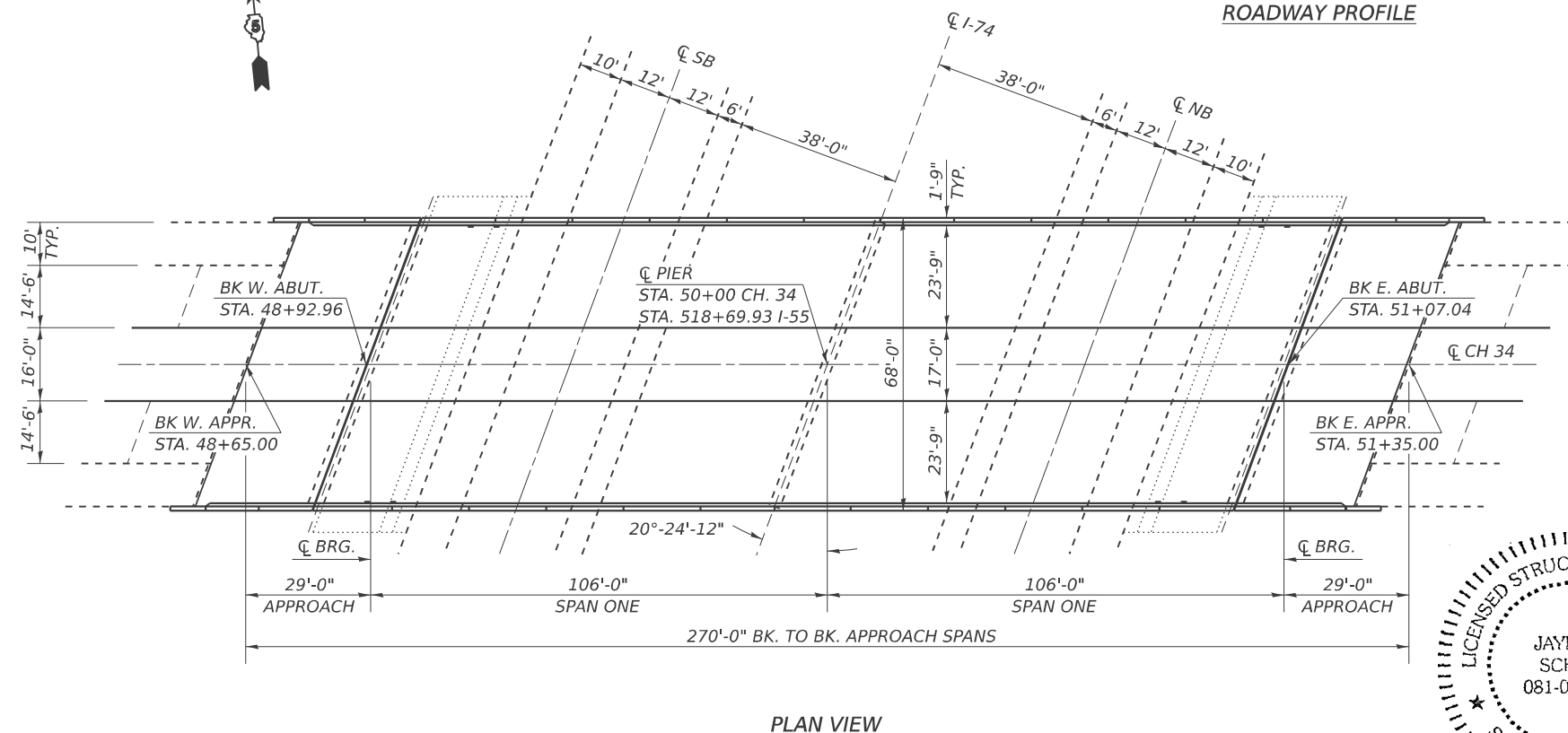
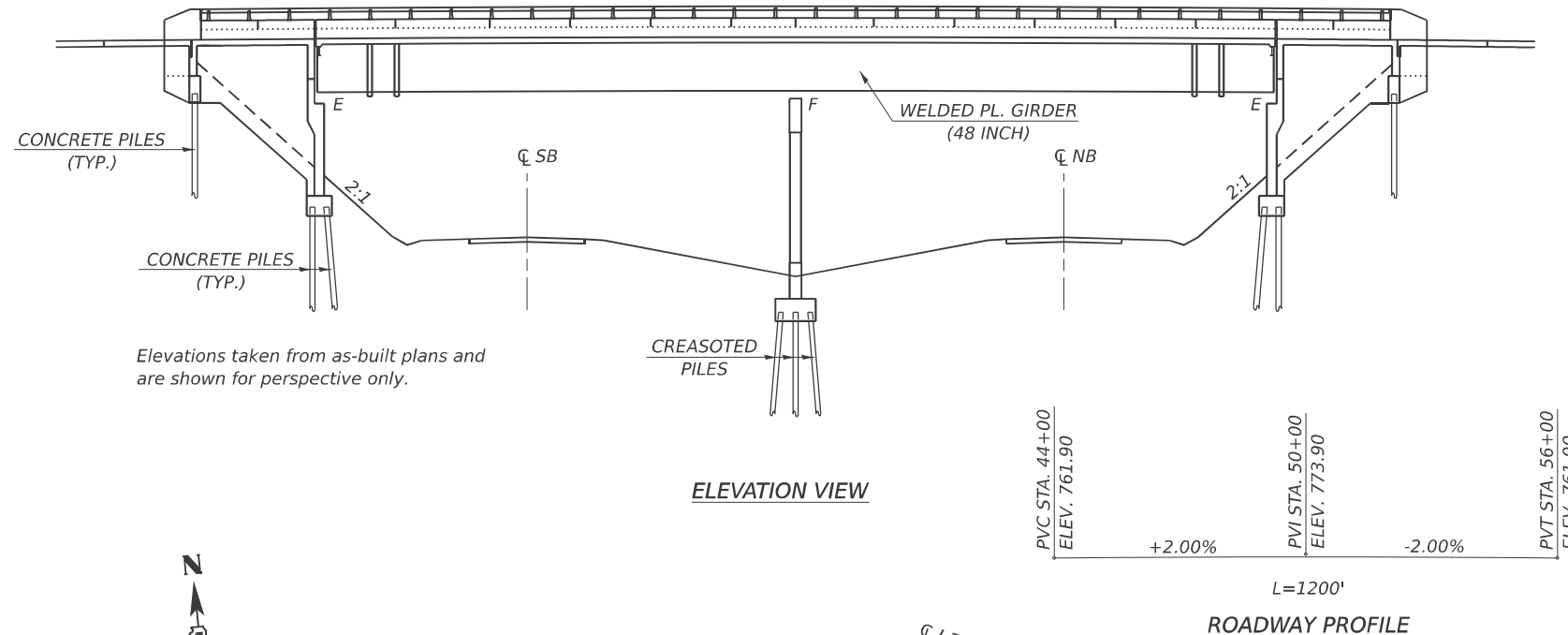
**LOCATION #3**  
**GENERAL PLAN & ELEVATION**  
**S.N. 057-0161**

**SCOPE OF WORK**

1. COMPLETE H.M.A. SURFACE REMOVAL (DECK).
2. COMPLETE BRIDGE DECK SCARIFICATION.
3. COMPLETE CONCRETE REMOVAL, SUPERSTRUCTURE CONCRETE AT MEDIANS.
4. COMPLETE FULL-DEPTH DECK PATCHING.
5. PLACE BRIDGE DECK FLY ASH OR GGBF SLAG CONCRETE OVERLAY, 2<sup>3</sup>/<sub>4</sub>".
6. COMPLETE BRIDGE DECK GROOVING.

**TOTAL BILL OF MATERIALS**

ITEM	UNIT	TOTAL
CONCRETE REMOVAL	CU YD	5.7
CONCRETE SUPERSTRUCTURE	CU YD	5.7
PROTECTIVE SHIELD	SQ YD	443.0
FLOOR DRAINS	EACH	8.0
HOT-MIX ASPHALT SURFACE REMOVAL (DECK)	SQ YD	1,351.3
BRIDGE DECK GROOVING	SQ YD	1,232.0
PROTECTIVE COAT	SQ YD	1,388.3
BRIDGE DECK FLY ASH OR GGBF SLAG CONCRETE OVERLAY 2 <sup>3</sup> / <sub>4</sub> "	SQ YD	1,351.3
BRIDGE DECK SCARIFICATION 3/4"	SQ YD	1,351.3
DECK SLAB REPAIR (FULL DEPTH, TYPE I)	SQ YD	4.0
DECK SLAB REPAIR (FULL DEPTH, TYPE II)	SQ YD	273.1



**GENERAL NOTES**

PLAN DIMENSIONS AND DETAILS RELATIVE TO THE EXISTING PLANS ARE SUBJECT TO NOMINAL CONSTRUCTION VARIATIONS. THE CONTRACTOR SHALL FIELD VERIFY EXISTING DIMENSIONS AND DETAILS AFFECTING NEW CONSTRUCTION AND MAKE NECESSARY APPROVED ADJUSTMENTS PRIOR TO CONSTRUCTION OR ORDERING OF MATERIALS. SUCH VARIATIONS SHALL NOT BE CAUSE FOR ADDITIONAL COMPENSATION FOR A CHANGE IN SCOPE OF WORK, HOWEVER, THE CONTRACTOR WILL BE PAID FOR THE QUANTITY ACTUALLY FURNISHED AT THE UNIT PRICE BID FOR THE WORK.

AN EXISTING STRUCTURE INFORMATION PACKAGE IS INCLUDED WITH THE CONTRACT LETTING DOCUMENTS UNDER PLANS AND SPECIAL PROVISIONS IN THE "ADDITIONAL INFORMATION" FOLDER.

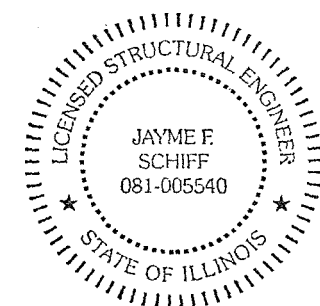
S.N. 057-0161 BASED ON INFORMATION AVAILABLE IN THE DISTRICT OFFICE NOT TO INVOLVE ASBESTOS IN THE BITUMINOUS BRIDGE DECK WEARING SURFACE OR WATERPROOFING MEMBRANE.

EXISTING REINFORCEMENT BARS EXTENDING INTO THE REMOVAL AREA SHALL BE CLEANED, STRAIGHTENED AND INCORPORATED INTO THE NEW CONSTRUCTION. ANY REINFORCEMENT BARS THAT ARE DAMAGED DURING CONCRETE REMOVAL SHALL BE REPLACED WITH AN APPROVED BAR SPLICER OR ANCHORAGE SYSTEM. COST INCLUDED WITH CONCRETE REMOVAL.

SEE SPECIAL PROVISION "DECK SLAB REPAIR" FOR ADDITIONAL REQUIREMENTS PERTAINING TO DECK SLAB REPAIR.

SYNTHETIC FIBERS SHALL BE INCLUDED IN THE BRIDGE DECK CONCRETE OVERLAY, SEE SPECIAL PROVISIONS.

PROTECTIVE COAT SHALL BE APPLIED TO ALL NEW CONCRETE SUPERSTRUCTURE AND ALL NEW CONCRETE OVERLAYS AS SPECIFIED IN ARTICLE 503.19 OF THE STANDAR SPECIFICATIONS. (D5 PREFERRED)



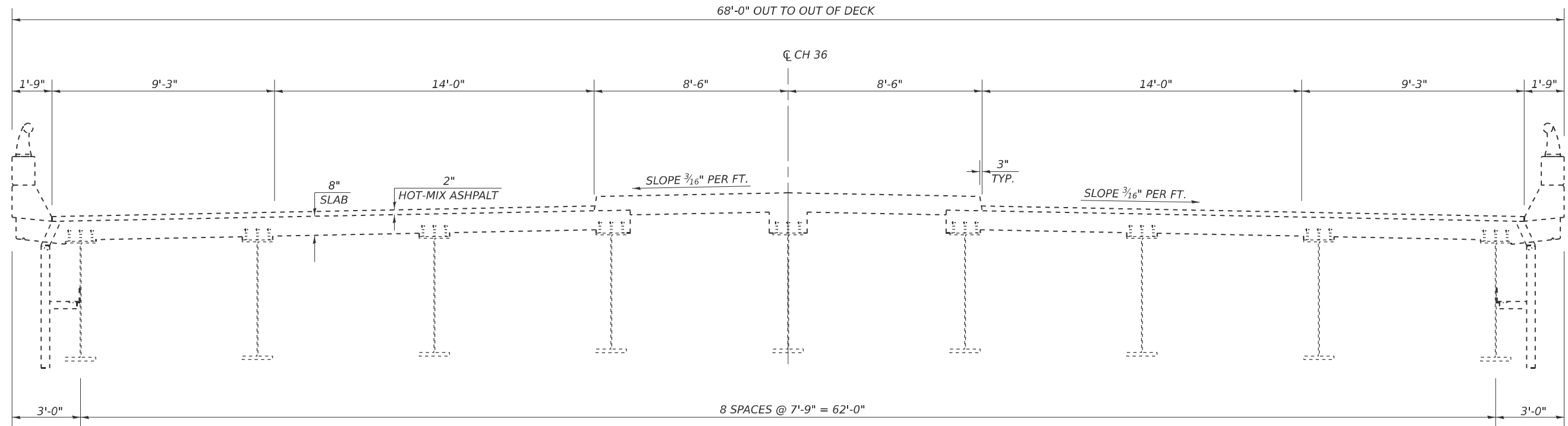
EXPIRES 11-30-2026

*Jayme F. Schiff*

MODEL: S:\057-0161-1 (Sheet)  
FILE NAME: c:\p\work\shiff\shiff\shiff\res\100818010570H45\_Sht\_Plans\_057-0161.dgn

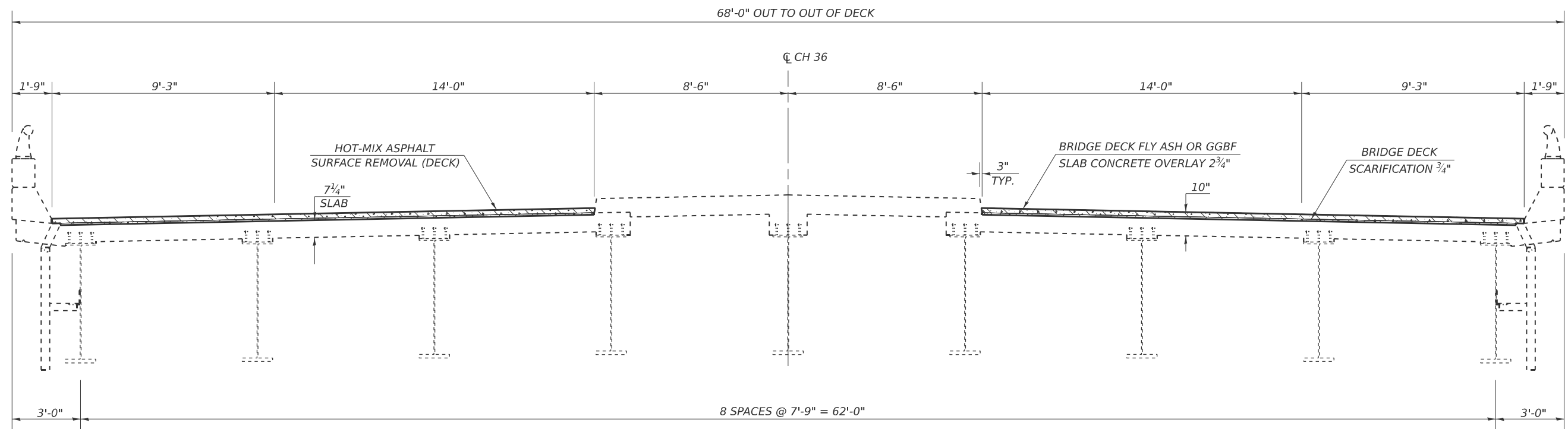
USER NAME = eric.shawler	DESIGNED -	REVISED -	<b>STATE OF ILLINOIS</b> <b>DEPARTMENT OF TRANSPORTATION</b>	<b>GENERAL PLAN &amp; ELEVATION</b> <b>S.N. 057-0161</b>		F.A.I. RTE.	SECTION	COUNTY	TOTAL SHEETS	SHEET NO.
	DRAWN - ESS	REVISED -		74 & 55	(57-8.57-22,57-23)BR-1	MCLEAN	25	14		
	CHECKED - TJB	REVISED -		CONTRACT NO. 70H45						
PLOT DATE = 11/15/2024	DATE -	REVISED -		ILLINOIS	FED. AID PROJECT					

**EXISTING DECK CROSS SECTION**  
**S.N. 057-0161**



LOOKING EAST

**PROPOSED DECK CROSS SECTION**  
**S.N. 057-0161**



LOOKING EAST

MODEL: S:\057-0161-2 (Sheet)  
FILE NAME: c:\p\work\shawleresd1008180\0570H45\_Sht\_Plans\_057-0161.dgn

USER NAME = eric.shawler	DESIGNED -	REVISED -
	DRAWN - ESS	REVISED -
	CHECKED - TJB	REVISED -
PLOT DATE = 11/15/2024	DATE -	REVISED -

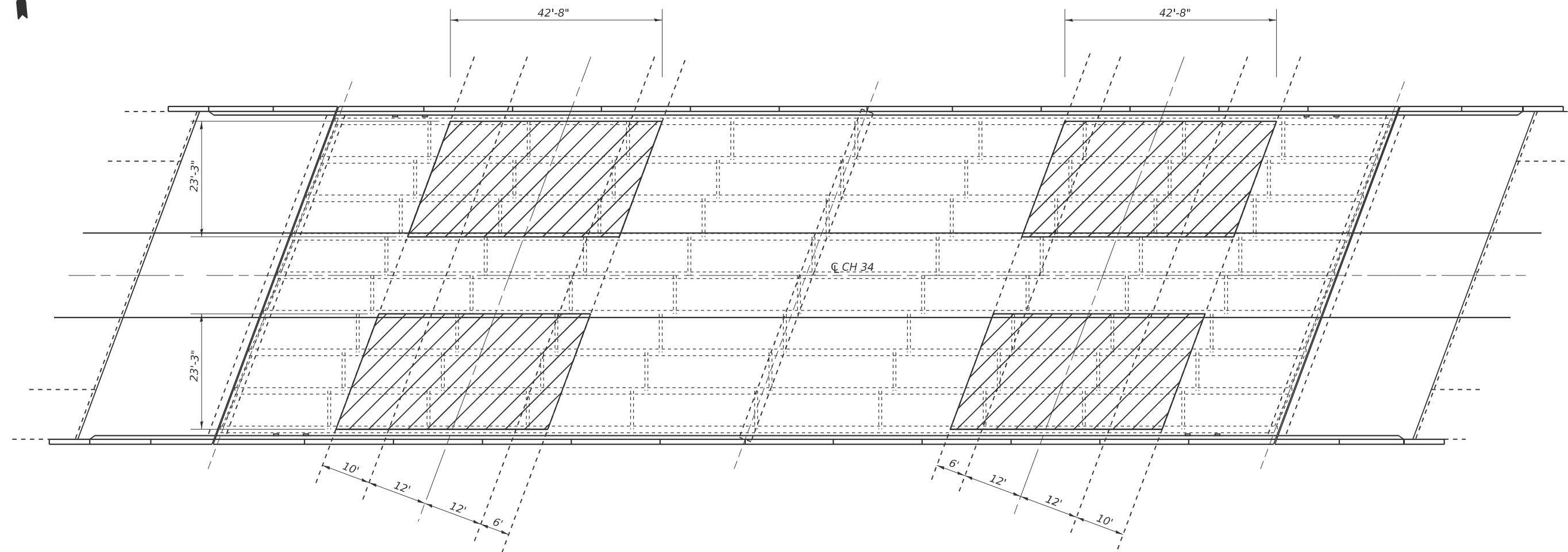
**STATE OF ILLINOIS**  
**DEPARTMENT OF TRANSPORTATION**

**DECK CROSS SECTION**  
**S.N. 057-0161**

SCALE: SHEET 2 OF 11 SHEETS STA. TO STA.

F.A.I. RTE.	SECTION	COUNTY	TOTAL SHEETS	SHEET NO.
74 & 55	(57-8,57-22,57-23)BR-1	MCLEAN	25	15
CONTRACT NO. 70H45				
ILLINOIS FED. AID PROJECT				

**PROTECTIVE SHIELD**  
S.N. 057-0161



PLAN VIEW

**LEGEND**



PROTECTIVE SHIELD

**BILL OF MATERIALS**

ITEM	UNIT	TOTAL
PROTECTIVE SHIELD	SQ YD	443.0

MODEL: S:\057-0161-3 [Sheet]  
FILE NAME: c:\p\work\paw\shawleresd1008180\0570H45\_Sht\_Plans\_057-0161.dgn

USER NAME = eric.shawler	DESIGNED -	REVISED -
	DRAWN - ESS	REVISED -
	CHECKED - TJB	REVISED -
PLOT DATE = 11/15/2024	DATE -	REVISED -

**STATE OF ILLINOIS**  
**DEPARTMENT OF TRANSPORTATION**

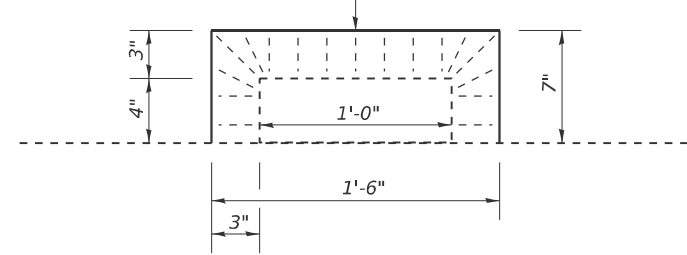
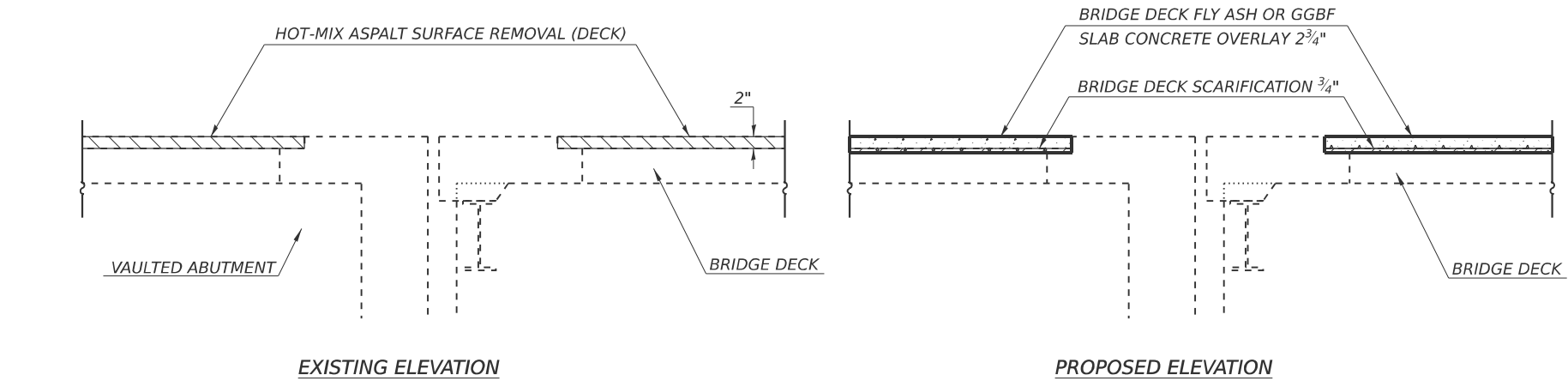
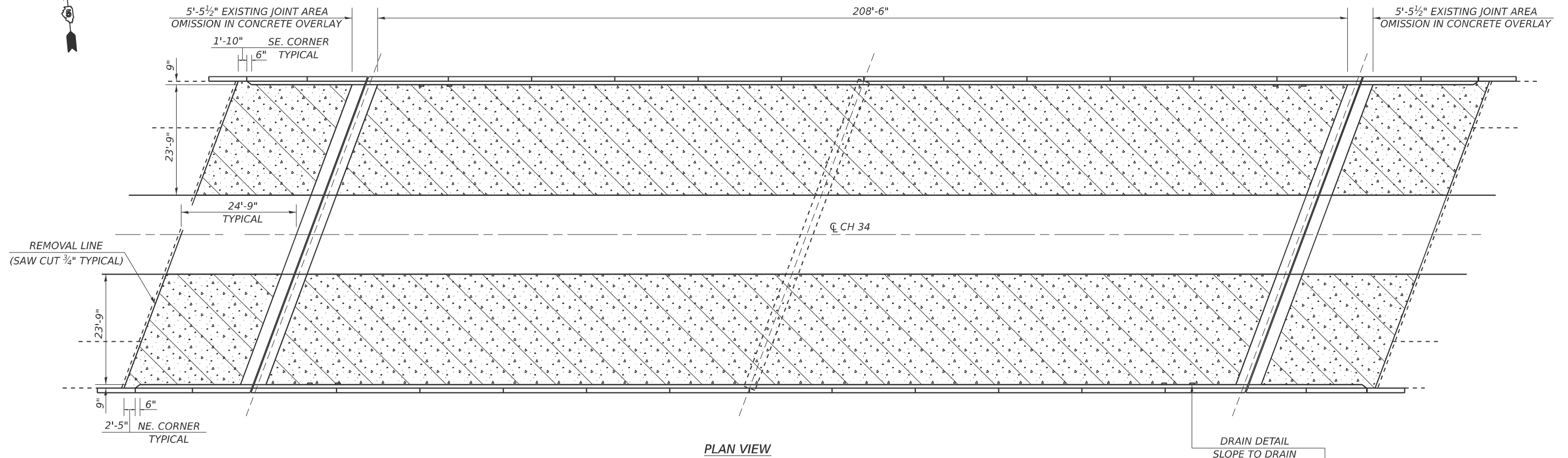
**PROTECTIVE SHIELD**  
**S.N. 057-0161**

SCALE: SHEET 3 OF 11 SHEETS STA. TO STA.

F.A.I RTE.	SECTION	COUNTY	TOTAL SHEETS	SHEET NO.
74 & 55	(57-8,57-22,57-23)BR-1	MCLEAN	25	16
CONTRACT NO. 70H45				
ILLINOIS FED. AID PROJECT				



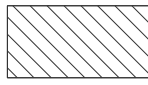
**WEARING SURFACE PLAN**  
**S.N. 057-0161**



**NOTE**  
SYNTHETIC FIBERS SHALL BE ADDED TO THE BRIDGE DECK MICROSILICA CONCRETE OVERLAY, SEE SPECIAL PROVISIONS.

**BILL OF MATERIALS**

ITEM	UNIT	TOTAL
BRIDGE DECK GROOVING	SQ YD	1,232.0
HOT-MIX ASPHALT SURFACE REMOVAL (DECK)	SQ YD	1,351.3
BRIDGE DECK FLY ASH OR GGBF SLAB CONCRETE OVERLAY 2 3/4"	SQ YD	1,351.3
BRIDGE DECK SCARIFICATION 3/4"	SQ YD	1,351.3
PROTECTIVE COAT	SQ YD	1,351.3

 HOT-MIX ASPHALT SURFACE REMOVAL (DECK)  
BRIDGE DECK SCARIFICATION 3/4"

 BRIDGE DECK FLY ASH OR GGBF SLAB CONCRETE OVERLAY 2 3/4"

MODEL: S:\057-0161-1 (Sheet)  
FILE NAME: c:\p\work\p\shawleresd1008180\0570161.dgn

USER NAME = eric.shawler	DESIGNED -	REVISED -
	DRAWN - ESS	REVISED -
	CHECKED - TJB	REVISED -
PLOT DATE = 11/15/2024	DATE -	REVISED -

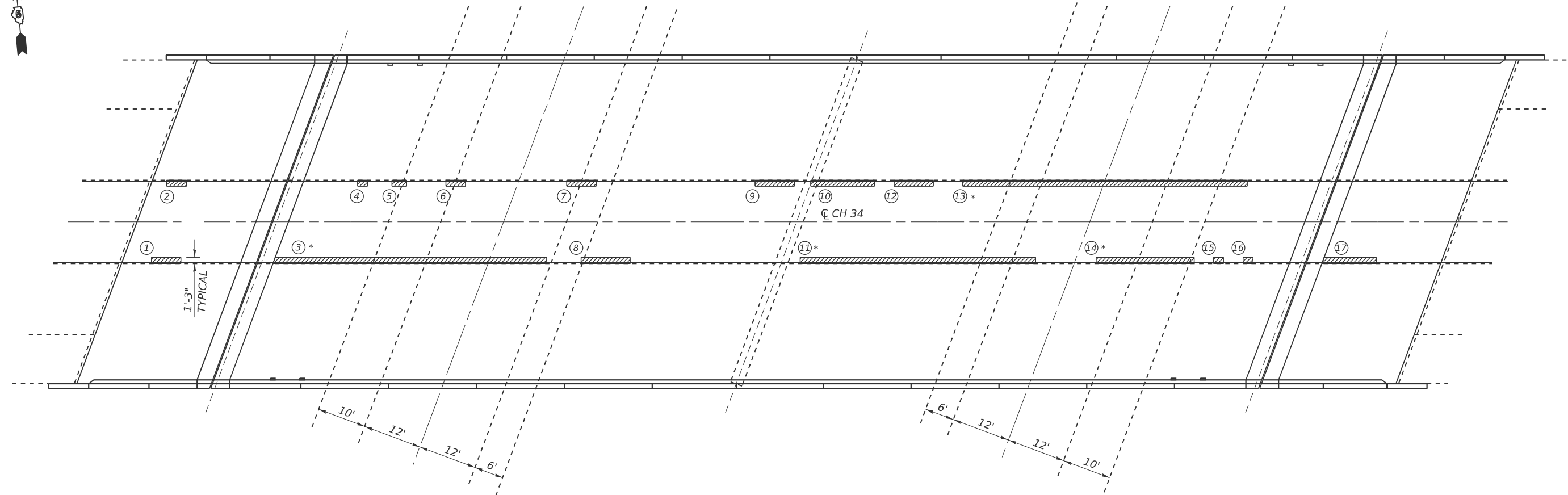
**STATE OF ILLINOIS**  
**DEPARTMENT OF TRANSPORTATION**

**WEARING SURFACE PLAN**  
**S.N. 057-0161**

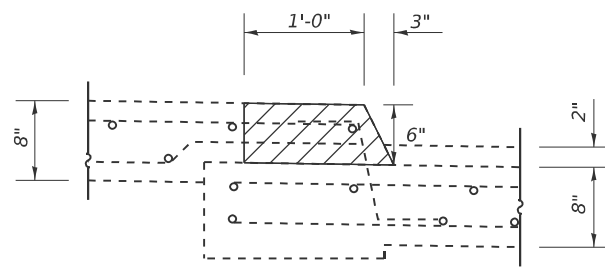
SCALE: SHEET 4 OF 11 SHEETS STA. TO STA.

F.A.I. RTE.	SECTION	COUNTY	TOTAL SHEETS	SHEET NO.
74 & 55	(57-8.57-22.57-23)BR-1	MCLEAN	25	17
CONTRACT NO. 70H45				
ILLINOIS FED. AID PROJECT				

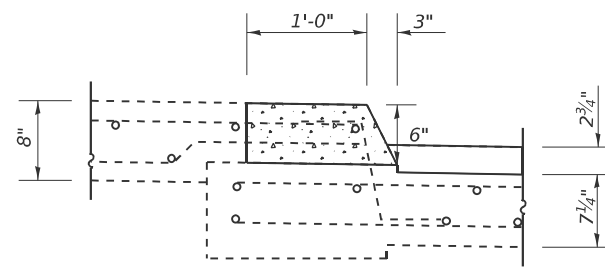
**CONCRETE REMOVAL & CONCRETE SUPERSTRUCTURE**  
S.N. 057-0161



PLAN VIEW



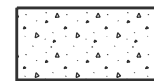
EXISTING ELEVATION



PROPOSED ELEVATION



CONCRETE REMOVAL



CONCRETE SUPERSTRUCTURE

**NOTE**

\* 10'-0" MAX, SECTION TO BE REMOVED AND REPLACE EVERY OTHER SECTION

**BILL OF MATERIALS**

ITEM	UNIT	TOTAL
CONCRETE REMOVAL	CU YD	5.4
CONCRETE SUPERSTRUCTURE	CU YD	5.4
PROTECTIVE COAT	SQ YD	41.1

NO.	SIZE W. FT. & L. FT.	NO.	SIZE W. FT. & L. FT.
1	1.25 & 6.0	10	1.25 & 13.0
2	1.25 & 4.0	*11	1.25 & 48.0
*3	1.25 & 56.0	12	1.25 & 8.0
4	1.25 & 2.0	*13	1.25 & 58.0
5	1.25 & 3.0	*14	1.25 & 20.0
6	1.25 & 4.0	15	1.25 & 2.0
7	1.25 & 6.0	16	1.25 & 2.0
8	1.25 & 10.0	17	1.25 & 11.0
9	1.25 & 8.0		

MODEL: S:\057-0161-5 [Sheet].dgn  
FILE NAME: c:\p\work\057-0161-5\057-0161-5\_Sht\_Plans\_057-0161.dgn

USER NAME = eric.shawler	DESIGNED -	REVISED -
	DRAWN - ESS	REVISED -
	CHECKED - TJB	REVISED -
PLOT DATE = 11/15/2024	DATE -	REVISED -

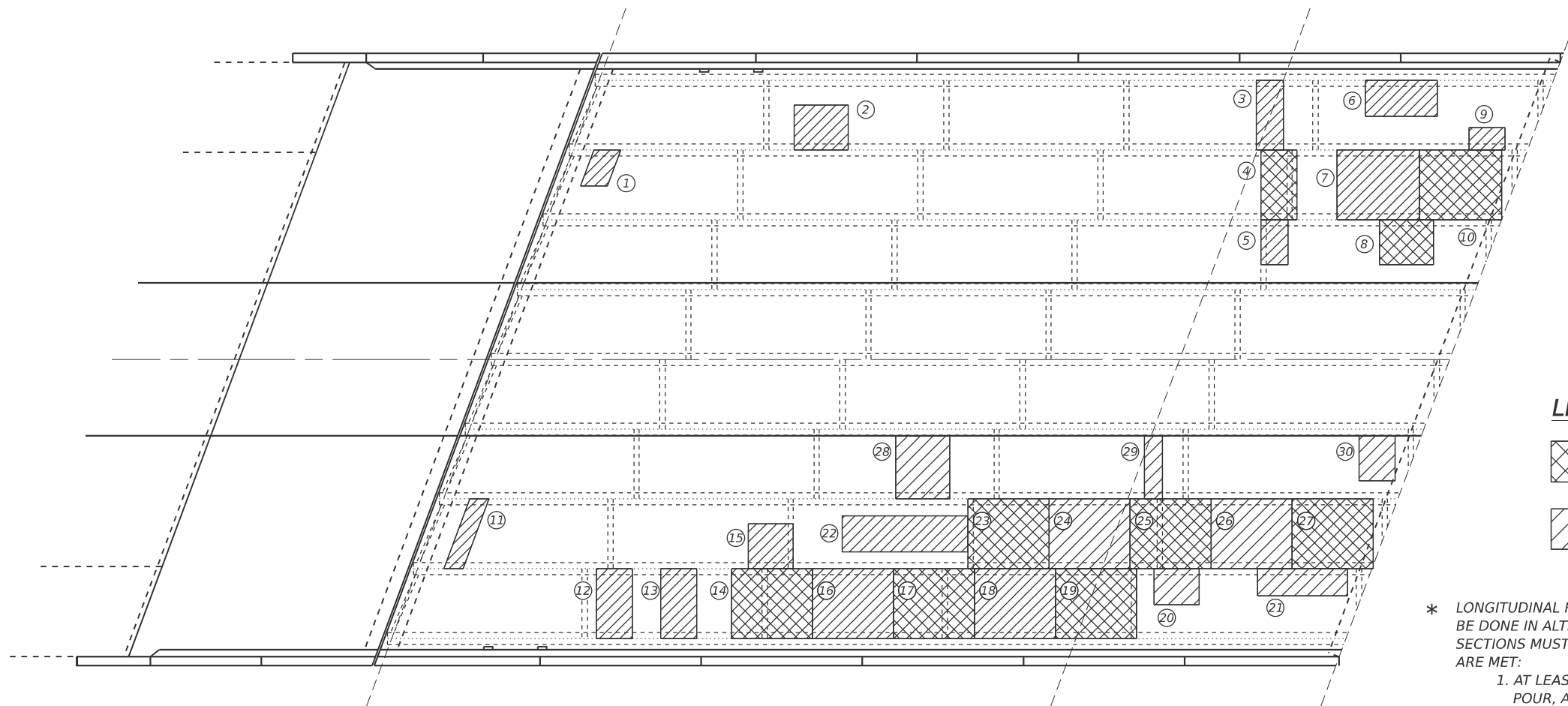
**STATE OF ILLINOIS**  
**DEPARTMENT OF TRANSPORTATION**

**CONCRETE REMOVAL & CONCRETE SUPERSTRUCTURE**  
**S.N. 057-0161**

SCALE: SHEET 5 OF 11 SHEETS STA. TO STA.

F.A.I. RTE.	SECTION	COUNTY	TOTAL SHEETS	SHEET NO.
74 & 55	(57-8,57-22,57-23)BR-1	MCLEAN	25	18
CONTRACT NO. 70H45				
ILLINOIS FED. AID PROJECT				

**BRIDGE DECK PATCHING - SPAN ONE**  
**S.N. 057-0161**



**PLAN VIEW**

**LEGEND**

- \* DECK SLAB REPAIR FULL DEPTH, TYPE II
- \* DECK SLAB REPAIR FULL DEPTH, TYPE II

- \* LONGITUDINAL REMOVAL FOR DECK SLAB REPAIR (FULL-DEPTH, TYPE II) MUST BE DONE IN ALTERNATING SECTIONS OF NO MORE THAN 10 FEET. ADJACENT SECTIONS MUST NOT BE REMOVED UNTIL BOTH OF THE FOLLOWING REQUIREMENTS ARE MET:
1. AT LEAST 72 HOURS SHALL HAVE ELAPSED FROM THE END OF THE PREVIOUS POUR, AND
  2. THE CONCRETE SHALL HAVE ATTAINED A MINIMUM MODULUS OF RUPTURE OF 650 PSI OR A MINIMUM COMPRESSIVE STRENGTH OF 3500 PSI.

PATCH NO.	SIZE W. FT. * L. FT.	DECK SLAB REPAIR (PART DEPTH)			PATCH NO.	SIZE W. FT. * L. FT.	DECK SLAB REPAIR (PART DEPTH)			PATCH NO.	SIZE W. FT. * L. FT.	DECK SLAB REPAIR (PART DEPTH)			PATCH NO.	SIZE W. FT. * L. FT.	DECK SLAB REPAIR (PART DEPTH)		
		SQ YD	SQ YD	SQ YD			SQ YD	SQ YD	SQ YD			SQ YD	SQ YD	SQ YD			SQ YD	SQ YD	SQ YD
1	4.0 X 3.0			1.33	10	7.75 X 9.0			7.75	19	7.75 X 9.0			7.75	28	7.75 X 6.0			5.17
2	5.0 X 6.0			3.33	11	7.75 X 2.0			1.72	20	4.0 X 5.0			2.22	29	7.0 X 2.0			1.56
3	7.75 X 3.0			2.58	12	7.75 X 4.0			3.45	21	3.0 X 10.0			3.33	30	5.0 X 4.0			2.22
4	7.75 X 4.0			3.45	13	7.75 X 4.0			3.45	22	5.0 X 14.0			7.78					
5	5.0 X 3.0			1.67	14	7.75 X 9.0			7.75	23	7.75 X 9.0			7.75					
6	4.0 X 8.0			3.56	15	5.0 X 5.0			2.78	24	7.75 X 9.0			7.75					
7	7.75 X 9.0			7.75	16	7.75 X 9.0			7.75	25	7.75 X 9.0			7.75					
8	5.0 X 6.0			3.33	17	7.75 X 9.0			7.75	26	7.75 X 9.0			7.75					
9	2.25 X 4.0			1.0	18	7.75 X 9.0			7.75	27	7.75 X 9.0			7.75					

THE ENGINEER SHALL SHOW ACTUAL LOCATIONS OF DECK SLAB REPAIR ON THE AS-BUILT PLANS. THE PREFERRED METHOD OF RECORDING THIS INFORMATION IS DATA RECORDING BY GPS OR TOTAL STATION, PROCESSED IN MICROSTATION. IF DESIRED, THE ENGINEER MAY RECORD BY HAND.

DECK SURVEY PERFORMED ON MARCH 5, 2024.

METHOD OF SURVEY: VISUAL

**BILL OF MATERIALS**

ITEM	UNIT	TOTAL
DECK SLAB REPAIR FULL DEPTH, TYPE II	SQ YD	147.0

MODEL: S:\057-0161-161 (Sheet1)  
FILE NAME: c:\p\work\bridge\shawleresd10081800570H45\_Sht\_Plan\_057-0161.dgn

USER NAME = eric.shawler	DESIGNED -	REVISED -
	DRAWN - ESS	REVISED -
	CHECKED - TJB	REVISED -
PLOT DATE = 11/15/2024	DATE -	REVISED -

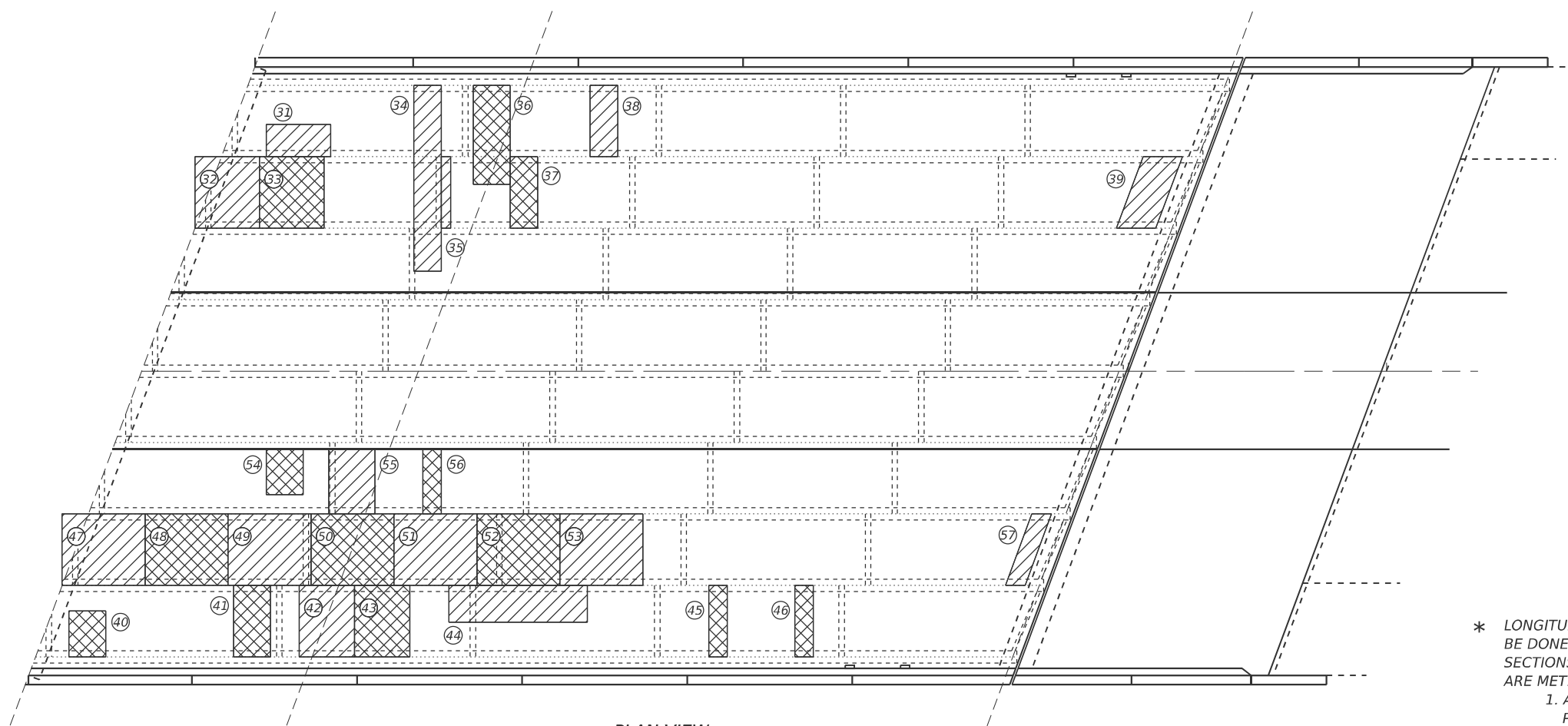
**STATE OF ILLINOIS**  
**DEPARTMENT OF TRANSPORTATION**

**BRIDGE DECK PATCHING - SPAN ONE**  
**S.N. 057-0161**

SCALE: SHEET 6 OF 11 SHEETS STA. TO STA.

F.A.I RTE.	SECTION	COUNTY	TOTAL SHEETS	SHEET NO.
74 & 55	(57-8,57-22,57-23)BR-1	MCLEAN	25	19
CONTRACT NO. 70H45				
ILLINOIS FED. AID PROJECT				

**BRIDGE DECK PATCHING - SPAN TWO**  
**S.N. 057-0161**



PLAN VIEW

**LEGEND**

- \* DECK SLAB REPAIR FULL DEPTH, TYPE II
- \* DECK SLAB REPAIR FULL DEPTH, TYPE II

- \* LONGITUDINAL REMOVAL FOR DECK SLAB REPAIR (FULL-DEPTH, TYPE II) MUST BE DONE IN ALTERNATING SECTIONS OF NO MORE THAN 10 FEET. ADJACENT SECTIONS MUST NOT BE REMOVED UNTIL BOTH OF THE FOLLOWING REQUIREMENTS ARE MET:
1. AT LEAST 72 HOURS SHALL HAVE ELAPSED FROM THE END OF THE PREVIOUS POUR, AND
  2. THE CONCRETE SHALL HAVE ATTAINED A MINIMUM MODULUS OF RUPTURE OF 650 PSI OR A MINIMUM COMPRESSIVE STRENGTH OF 3500 PSI.

PATCH NO.	SIZE W. FT. * L. FT.	DECK SLAB REPAIR (PART DEPTH)			PATCH NO.	SIZE W. FT. * L. FT.	DECK SLAB REPAIR (PART DEPTH)			PATCH NO.	SIZE W. FT. * L. FT.	DECK SLAB REPAIR (PART DEPTH)			PATCH NO.	SIZE W. FT. * L. FT.	DECK SLAB REPAIR (PART DEPTH)		
		DECK SLAB REPAIR (FD TY 1)	DECK SLAB REPAIR (FD TY 2)	SQ YD			DECK SLAB REPAIR (FD TY 1)	DECK SLAB REPAIR (FD TY 2)	SQ YD			DECK SLAB REPAIR (FD TY 1)	DECK SLAB REPAIR (FD TY 2)	SQ YD			DECK SLAB REPAIR (FD TY 1)	DECK SLAB REPAIR (FD TY 2)	SQ YD
31	3.5 X 7.0		2.72		40	4.0 X 5.0		2.22		49	7.75 X 9.0		7.75						
32	7.75 X 7.0		6.03		41	7.75 X 4.0		3.45		50	7.75 X 9.0		7.75						
33	7.75 X 7.0		6.03		42	7.75 X 6.0		5.17		51	7.75 X 9.0		7.75						
34	20.0 X 3.0		6.67		43	7.75 X 6.0		5.17		52	7.75 X 9.0		7.75						
35	7.75 X 1.0		0.86		44	15.0 X 4.0		6.67		53	7.75 X 9.0		7.75						
36	10.75 X 4.0		4.78		45	7.75 X 2.0		1.72		54	4.75 X 4.0		2.11						
37	7.75 X 3.0		2.58		46	7.75 X 2.0		1.72		55	7.75 X 5.0		4.31						
38	7.75 X 3.0		3.00		47	7.75 X 9.0		7.75		56	7.75 X 2.0		1.72						
39	7.75 X 4.0		3.45		48	7.75 X 9.0		7.75		57	7.75 X 2.0		1.72						

THE ENGINEER SHALL SHOW ACTUAL LOCATIONS OF DECK SLAB REPAIR ON THE AS-BUILT PLANS. THE PREFERRED METHOD OF RECORDING THIS INFORMATION IS DATA RECORDING BY GPS OR TOTAL STATION, PROCESSED IN MICROSTATION. IF DESIRED, THE ENGINEER MAY RECORD BY HAND.

DECK SURVEY PERFORMED ON MARCH 5, 2024.

METHOD OF SURVEY: VISUAL

**BILL OF MATERIALS**

ITEM	UNIT	TOTAL
DECK SLAB REPAIR FULL DEPTH, TYPE II	SQ YD	126.3

MODEL: S:\057-0161-7 (Sheet)  
FILE NAME: c:\p\work\bridge\shawleresd10081800570H45\_Sht\_Plans\_057-0161.dgn

USER NAME = eric.shawler	DESIGNED -	REVISED -
	DRAWN - ESS	REVISED -
	CHECKED - TJB	REVISED -
PLOT DATE = 11/15/2024	DATE -	REVISED -

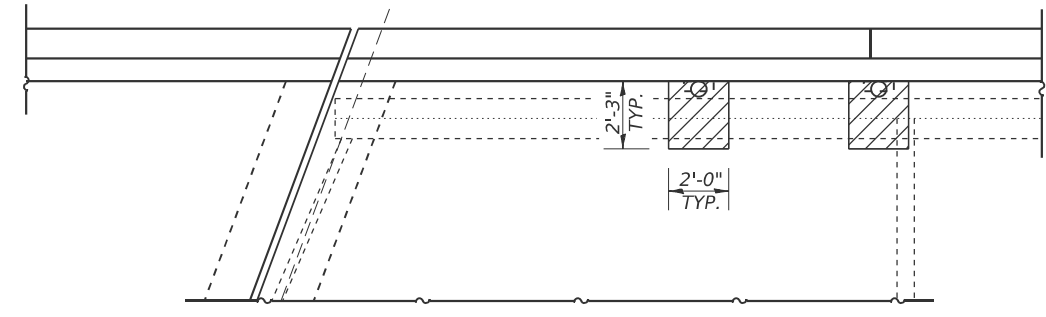
**STATE OF ILLINOIS**  
**DEPARTMENT OF TRANSPORTATION**

**BRIDGE DECK PATCHING - SPAN TWO**  
**S.N. 057-0161**

SCALE: SHEET 7 OF 11 SHEETS STA. TO STA.

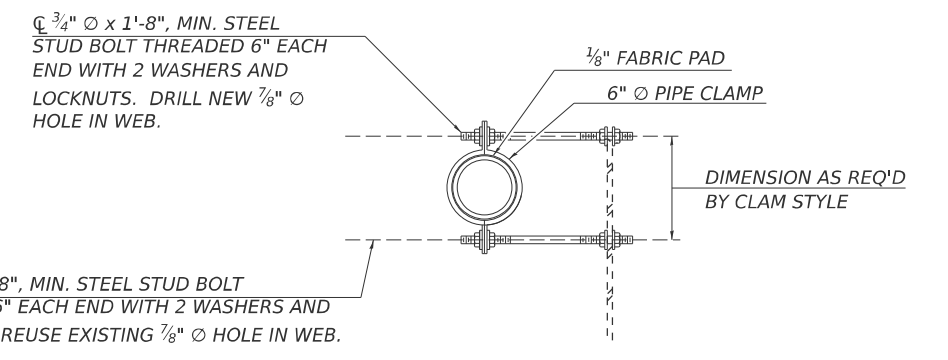
F.A.I RTE.	SECTION	COUNTY	TOTAL SHEETS	SHEET NO.
74 & 55	(57-8,57-22,57-23)BR-1	MCLEAN	25	20
CONTRACT NO. 70H45				
ILLINOIS FED. AID PROJECT				

**FLOOR DRAIN REPLACEMENT**  
**S.N. 057-0161**



**PLAN VIEW**  
NORTHWEST ABUTMENT CORNER SHOWN  
(ALL ABUTMENT CORNERS SIMILAR)

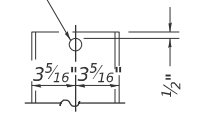
DECK SLAB REPAIR FULL DEPTH, TYPE I



**SECTION A-A**  
SHOWING PIPE CLAMP  
ANCHORAGE STYLE

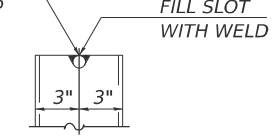
$\frac{3}{4}$ "  $\times$  1'-8", MIN. STEEL STUD BOLT THREADED 6" EACH END WITH 2 WASHERS AND LOCKNUTS. DRILL NEW  $\frac{7}{8}$ "  $\varnothing$  HOLE IN WEB.

$\frac{1}{2}$ "  $\varnothing$  8" FIBERGLASS REINFORCED PLASTIC REBAR

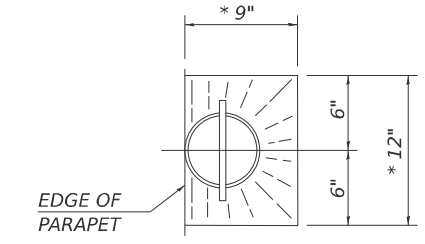


**FIBERGLASS PIPE**

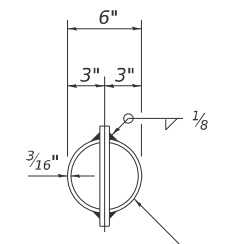
$\frac{1}{2}$ "  $\varnothing$  8" ALUMINUM BAR  
ASTM B 211 ALLOY 6061-T6



**ALUMINUM TUBE**

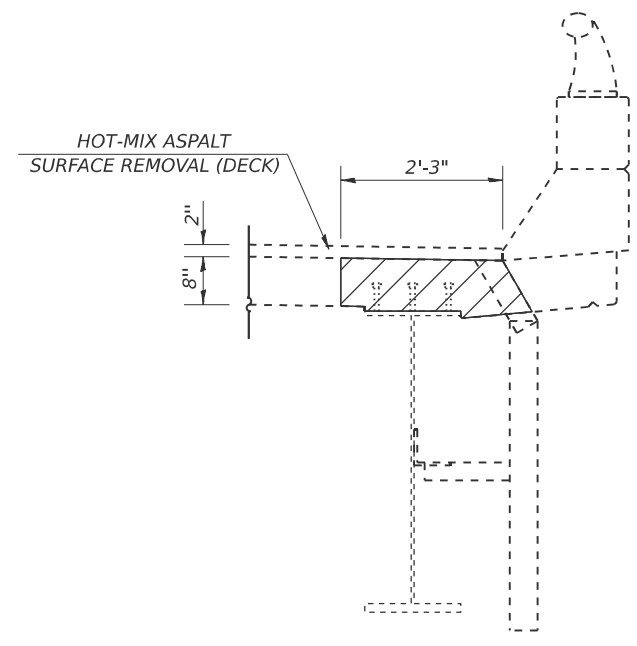


**TOP PLAN**  
\* SLOPE TO DRAIN



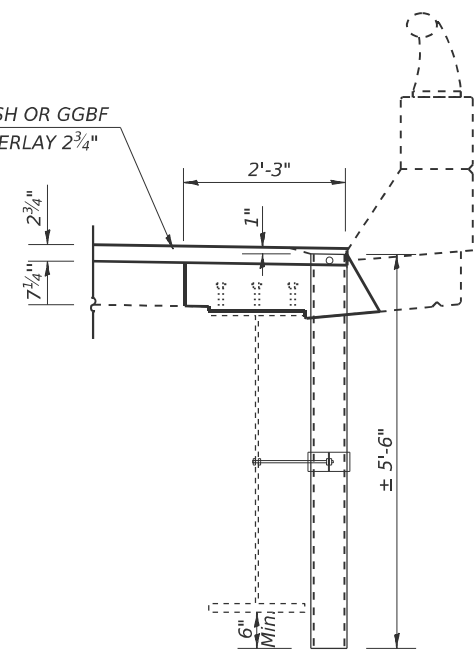
**TOP PLAN**  
ALUMINUM TUBE SHOWN

6" O.D. ALUMINUM TUBE ALLOY 6061-T6 OR 6"  $\varnothing$  FIBERGLASS PIPE



**SECTION AT EXISTING DECK DRAIN**

BRIDGE DECK FLY ASH OR GGBF  
SLAB CONCRETE OVERLAY 2 3/4"



**SECTION PROPOSED FLOOR DRAIN**

**NOTES:**

- FLOOR DRAINS NEED NOT BE PAINTED.
- FIBERGLASS PIPE SHALL CONFORM TO ASTM D 2996, WITH SHORT-TIME RUPTURE STRENGTH HOOP TENSILE STRESS OF 30,000 P.S.I. MINIMUM.
- SEE DETAIL OF DECK SLAB REPAIR
- COST TO REMOVE EXISTING FLOOR DRAINS AND EXTENSIONS ARE INCLUDED WITH DECK SLAB REPAIR.
- THE CLAMPING DEVICE SHALL BE GALVANIZED ACCORDING TO AASHTO M 232. COST INCLUDED WITH FLOOR DRAINS.
- \* ALL DIMENSIONS SHALL BE FIELD VERIFIED BY THE CONTRACTOR PRIOR TO ORDERING OF MATERIALS.

**BILL OF MATERIALS**

ITEM	UNIT	TOTAL
FLOOR DRAINS	EACH	8.0
DECK SLAB REPAIR FULL DEPTH, TYPE I	SQ YD	4.0

MODEL: S:\057-0161-8 [Sheet].dgn  
FILE NAME: c:\p\work\shawler\resd1008180\0570H45\_Sht\_Plans\_057-0161.dgn

USER NAME = eric.shawler	DESIGNED -	REVISED -
	DRAWN - ESS	REVISED -
	CHECKED - TJB	REVISED -
PLOT DATE = 11/15/2024	DATE -	REVISED -

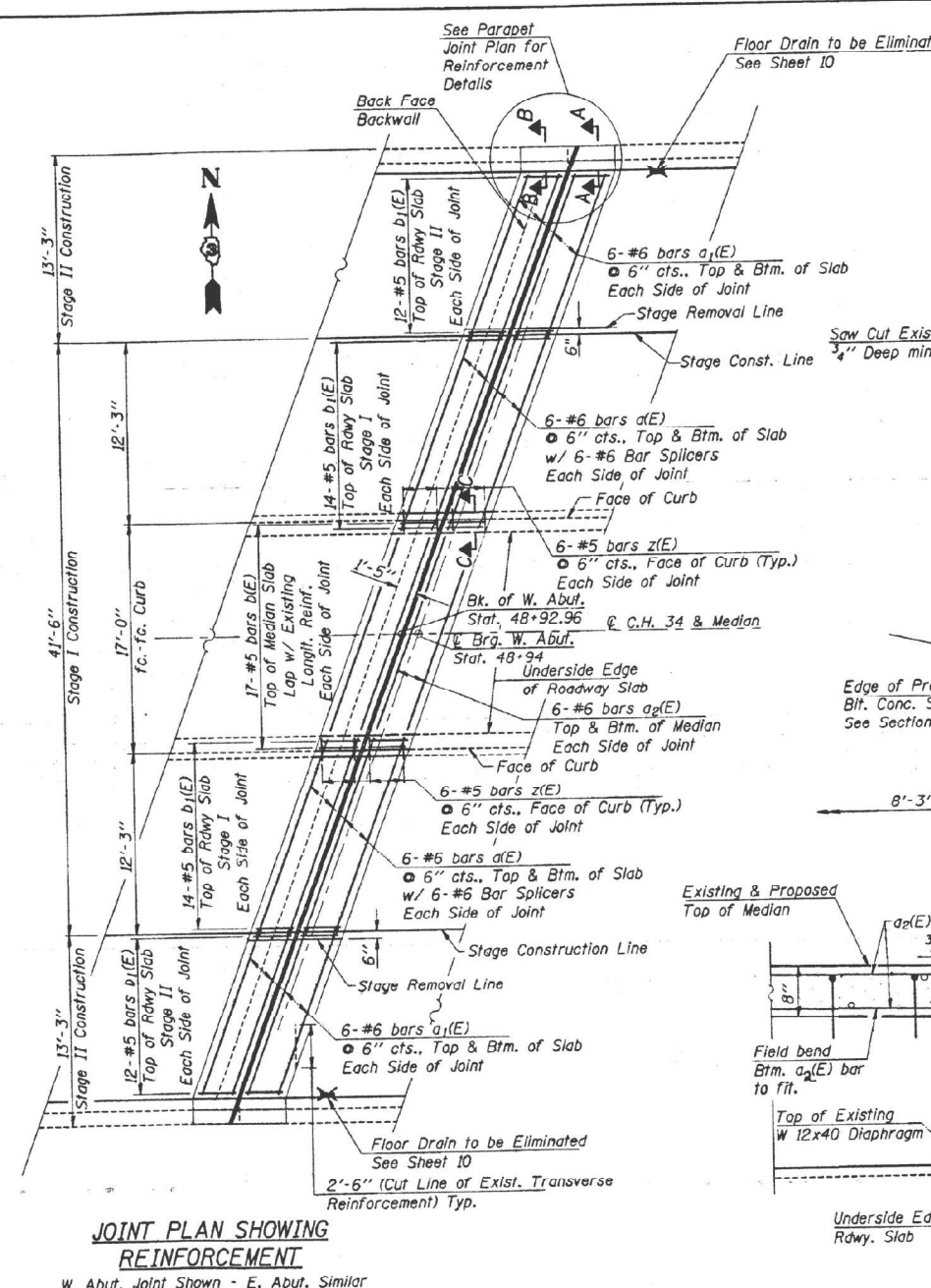
**STATE OF ILLINOIS**  
**DEPARTMENT OF TRANSPORTATION**

**FLOOR DRAIN REPLACEMENT**  
**S.N. 057-0161**

SCALE: SHEET 8 OF 11 SHEETS STA. TO STA.

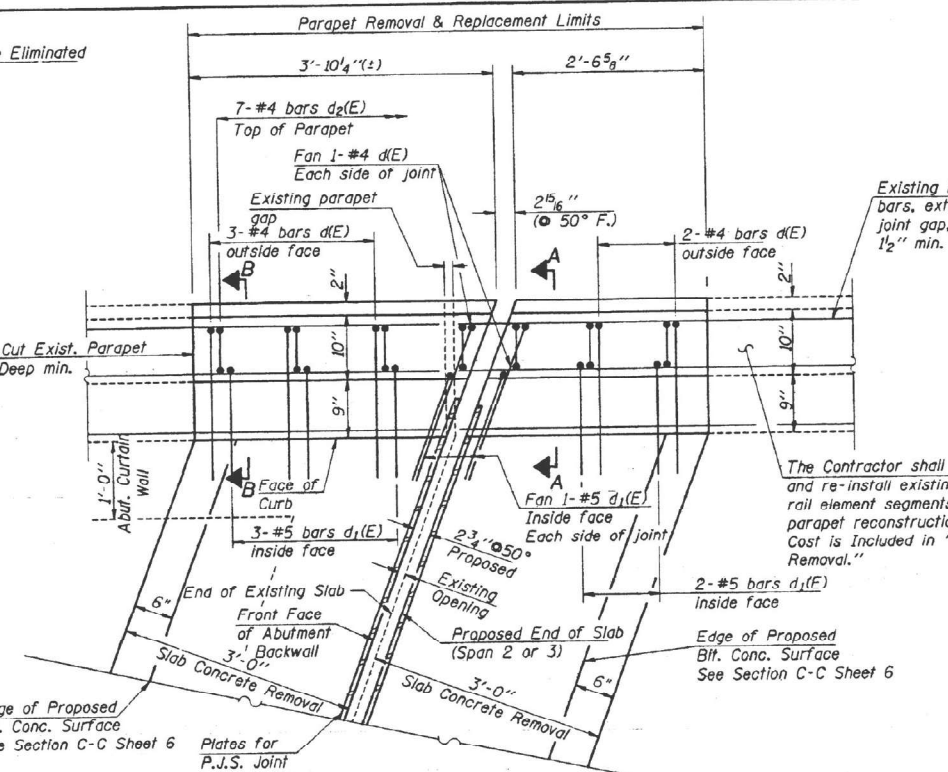
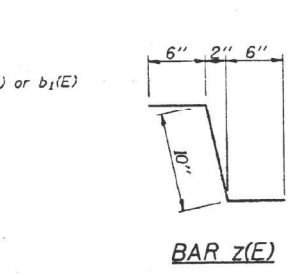
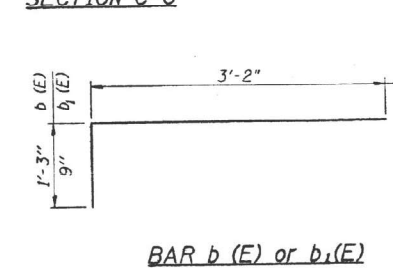
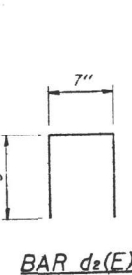
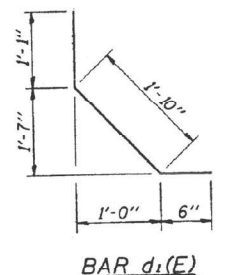
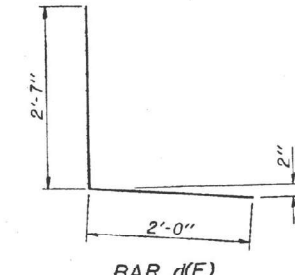
F.A.I. RTE.	SECTION	COUNTY	TOTAL SHEETS	SHEET NO.
74 & 55	(57-8,57-22,57-23)BR-1	MCLEAN	25	21
CONTRACT NO. 70H45				
ILLINOIS FED. AID PROJECT				

F.A.I. RTE. NO.	SECTION	COUNTY	TOTAL SHEETS	SHEET NO.
55	**	McLEAN	44	32
FED. RD. DIST. NO.	ILLINOIS	FED. AID PROJECT		
** (57-B) R.S. BR				
S.N. 057-0161 - Sheet 4 of 13				

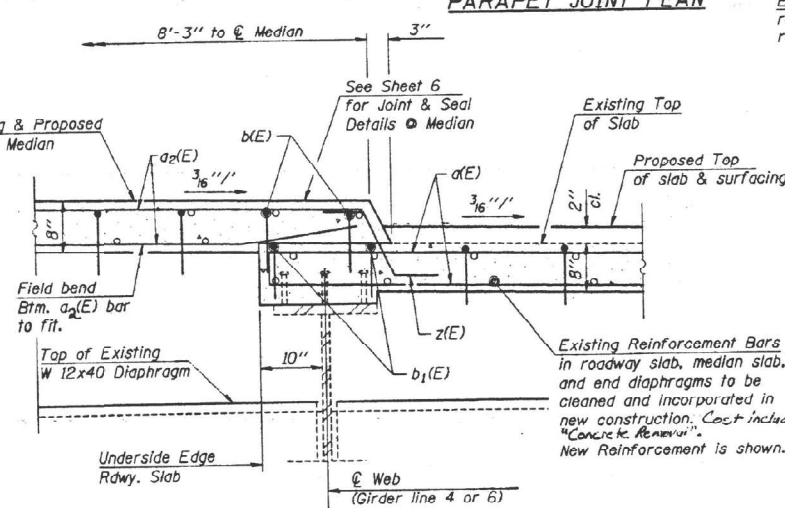


**JOINT PLAN SHOWING REINFORCEMENT**  
W. Abut. Joint Shown - E. Abut. Similar

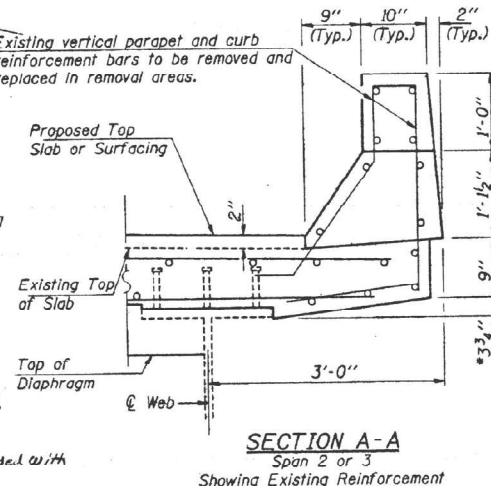
Rehabilitation Project	
DESIGNED	A.R.K.
CHECKED	F.J.S. & S.F.M.
DRAWN	R.S.J.
CHECKED	A.R.K. & F.J.S.



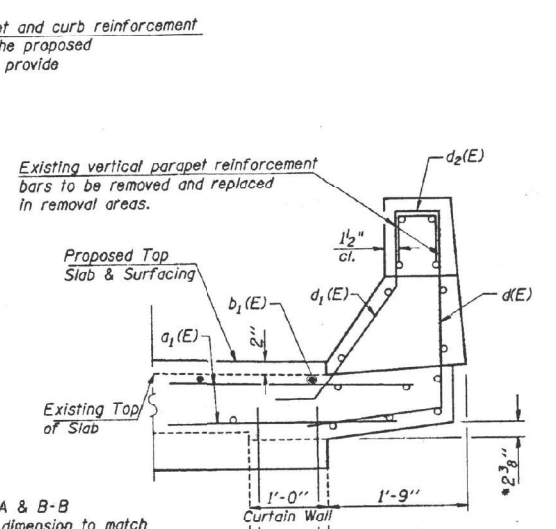
**PARAPET JOINT PLAN**



**SECTION C-C**



**SECTION A-A**



**SECTION B-B**

\* Section A-A & B-B Form drop dimension to match existing overhang in field. Existing Plan dimension is shown.

**SUPERSTRUCTURE BILL OF MATERIAL**

BAR	NO.	SIZE	LENGTH	SHAPE
a(E)	96	#6	14'-7"	
a1(E)	96	#6	13'-9"	
a2(E)	48	#6	17'-10"	
b(E)	68	#5	4'-5"	
b1(E)	208	#5	3'-11"	
d(E)	28	#4	4'-7"	
d1(E)	28	#5	3'-5"	
d2(E)	28	#4	2'-1"	
z(E)	48	#5	1'-10"	
Concrete Removal			Cu. Yd.	33.3
Concrete Superstructure			Cu. Yd.	34.1
Reinforcement Bars, Epoxy Coated			Pound	6850
Bar Splicers			Each	96
Protective Coat			Sq. Yd.	91
Waterproofing Membrane System			Sq. Yd.	1364
Polymer-mod. Bit. Coat, Surf. Coat, Superpoly. Mod. Mem.			Ton	115

Note: Reinforcement Bars designated (E) shall be epoxy coated.

Work this sheet with sheets 3 & 6.

ILLINOIS DEPARTMENT OF TRANSPORTATION  
**DECK DETAILS**  
**STRUCTURE # 057-0161**  
 F.A.S. ROUTE 1479 (C.H. 34) OVER F.A.I. 55  
 McLEAN COUNTY

DATE: \_\_\_\_\_  
 511 WEST CAPITAL SPRINGFIELD, IL 62704 (217) 528-2958  
**Ozyurt and Stone, Inc.**  
 CONSULTING ENGINEERS

DRAWN BY: \_\_\_\_\_  
 CHECKED BY: \_\_\_\_\_  
 JOB #: 99312  
 FILE: REINFDTL.DWG  
 DATE: 03-10-00

REVISIONS	
NAME	DATE
A.R.K., R.S.J.	4/27/00

MODEL: SK 057-0161-0 (Sheet) FILE NAME: c:\p\work\reinf\shawleresd100818010570145\_Sht\_Plans\_057-0161.dgn

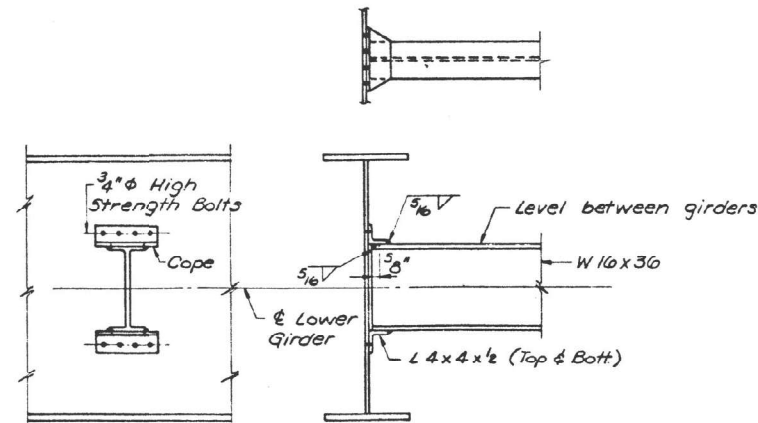
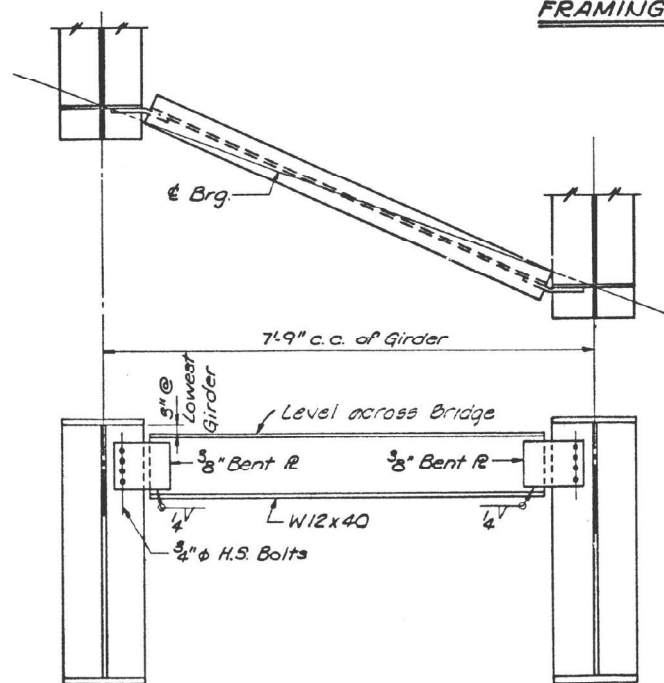
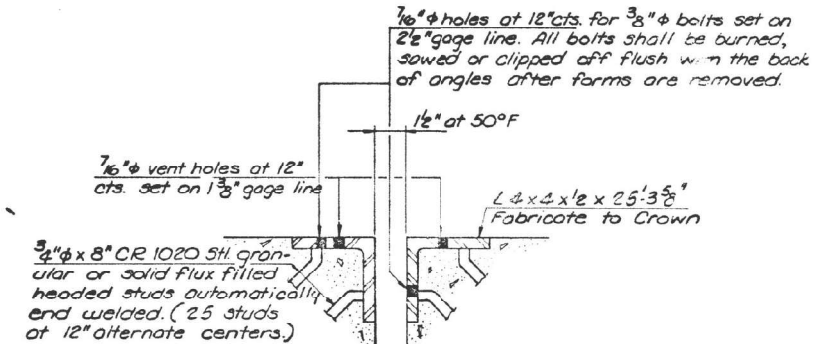
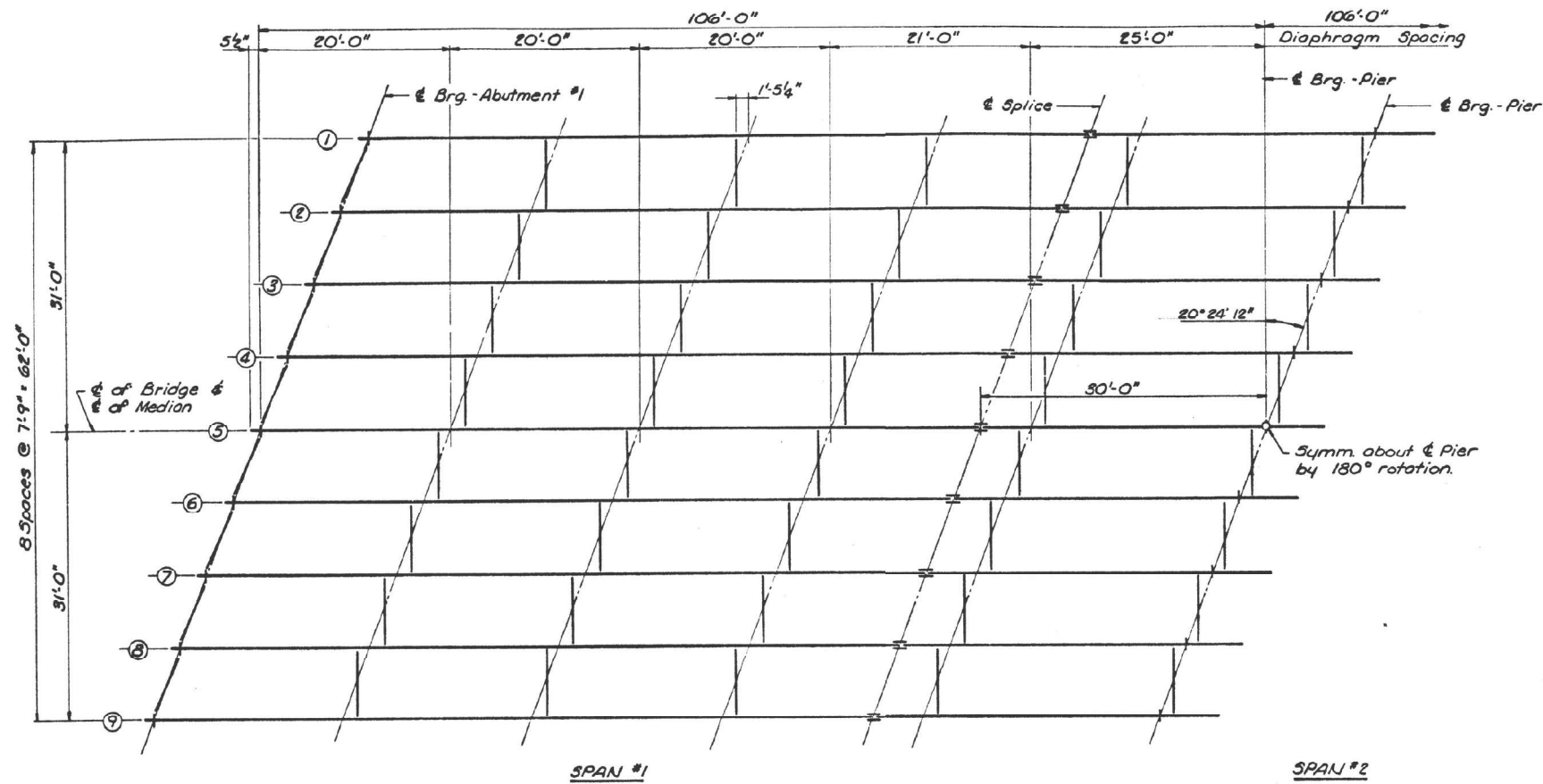
USER NAME = eric.shawler	DESIGNED -	REVISED -
	DRAWN -	REVISED -
	CHECKED -	REVISED -
PLOT DATE = 11/15/2024	DATE -	REVISED -

STATE OF ILLINOIS  
 DEPARTMENT OF TRANSPORTATION

AS-BUILT PLANS (INFORMATION ONLY)  
 S.N. 057-0161

SCALE: SHEET 9 OF 11 SHEETS STA. TO STA.

F.A.I. RTE.	SECTION	COUNTY	TOTAL SHEETS	SHEET NO.
74 & 55	(57-8.57-22.57-23)BR-1	McLEAN	25	22
CONTRACT NO. 70H45				
ILLINOIS FED. AID PROJECT				



TOP OF WEB ELEVATIONS

GIRDER	169	268	367	466	5
Brg. Abut #1	766.58	766.70	766.82	766.94	767.05
Splice #1	766.70	766.82	766.94	767.07	767.19
Pier	766.70	766.82	766.94	767.07	767.19
Splice #2	766.70	766.82	766.94	767.07	767.19
Brg. Abut #2	766.02	766.70	766.82	766.94	767.05

STRUCTURAL STEEL DETAILS

REVISIONS		STATE OF ILLINOIS		DRAWN BY
NO.	DATE	SCALE		M.L.T. S.
1	7.21.03			EMILY
C.H. 34 OVER FAI-55		PROJECT		210
FAI-55 SEC 57-8.43.1		MCLEAN COUNTY		
STA 518 + 6993 (FAI-55)		HOMER L. CHASTAIN & ASSOCIATES		
		CONSULTING ENGINEERS		
		DECATUR, ILLINOIS		

MODEL: SK\_057-0161-10 (Sheet)  
FILE NAME: c:\p\work\1015\shawleresd100813010570H45\_Sht\_Plans\_057-0161.dgn

USER NAME = eric.shawler	DESIGNED -	REVISED -
	DRAWN -	REVISED -
	CHECKED -	REVISED -
PLOT DATE = 11/15/2024	DATE -	REVISED -

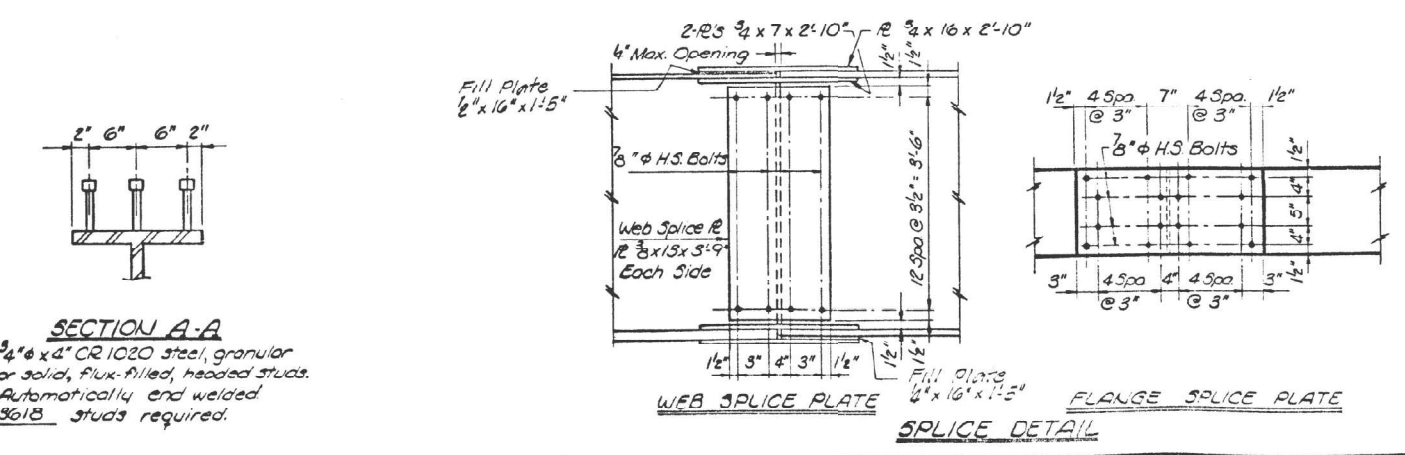
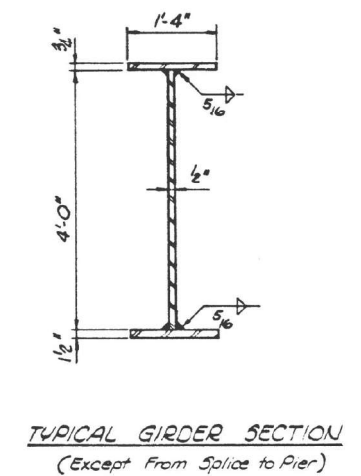
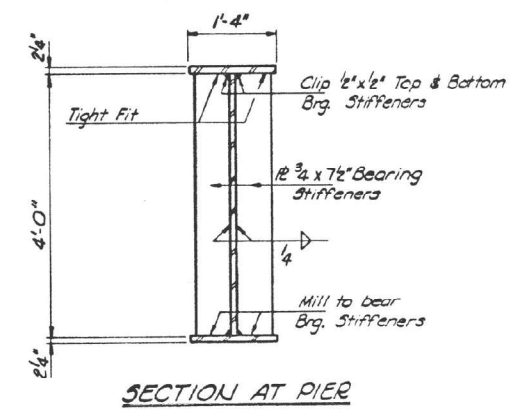
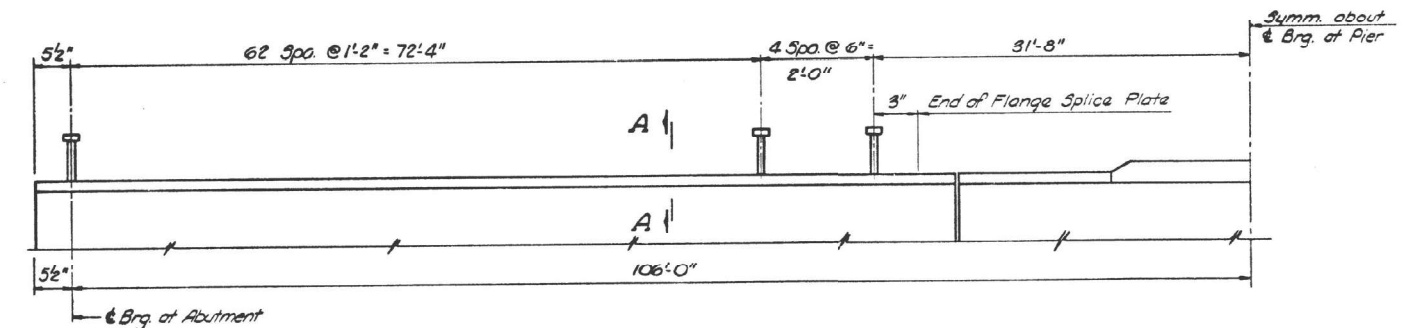
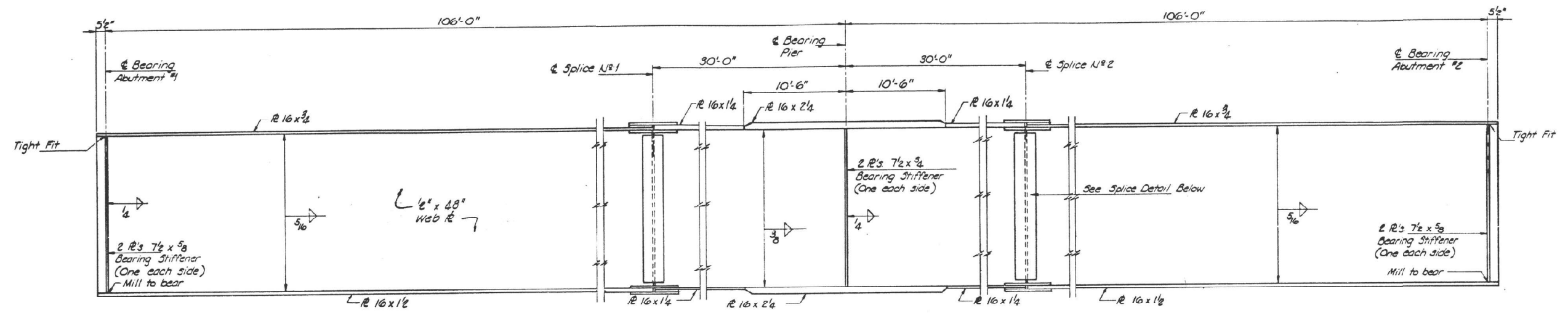
STATE OF ILLINOIS  
DEPARTMENT OF TRANSPORTATION

AS-BUILT PLANS (INFORMATION ONLY)  
S.N. 057-0161

SCALE: SHEET 10 OF 11 SHEETS STA. TO STA.

F.A.I. RTE.	SECTION	COUNTY	TOTAL SHEETS	SHEET NO.
74 & 55	(57-8.57-22,57-23)BR-1	MCLEAN	25	23
CONTRACT NO. 70H45				
ILLINOIS FED. AID PROJECT				

ROUTE NO.	SECTION	COUNTY	TOTAL SHEETS	SHEET NO.
FAI-55	57-BH1	MCLEAN	32	20
FED. ROAD DIST. NO.	ILLINOIS PROJECT			



REVISIONS		STATE OF ILLINOIS		DRAWN BY: DAI	
1	7-7-03			MLT 9-7C	
		CH 34 OVER FAI-55 PROJECT		CHECKED BY: DA	
		FAI-55 SEC 57-BH1 PROJECT		FPM 10-2	
		STA 518 + 6993 (FAI-55) MCLEAN COUNTY		BOOK NUMBER	
		HOMER L. CHASTAIN & ASSOCIATES		2109	
		CONSULTING ENGINEERS			
		DECATUR, ILLINOIS			

MODEL: SK\_057-0161-11 (Sheet)  
FILE NAME: c:\p\work\10\shawlerresd10081800\570H45\_Sht\_Plans\_057-0161.dgn

USER NAME = eric.shawler	DESIGNED -	REVISED -
	DRAWN -	REVISED -
	CHECKED -	REVISED -
PLOT DATE = 11/19/2024	DATE -	REVISED -

STATE OF ILLINOIS  
DEPARTMENT OF TRANSPORTATION

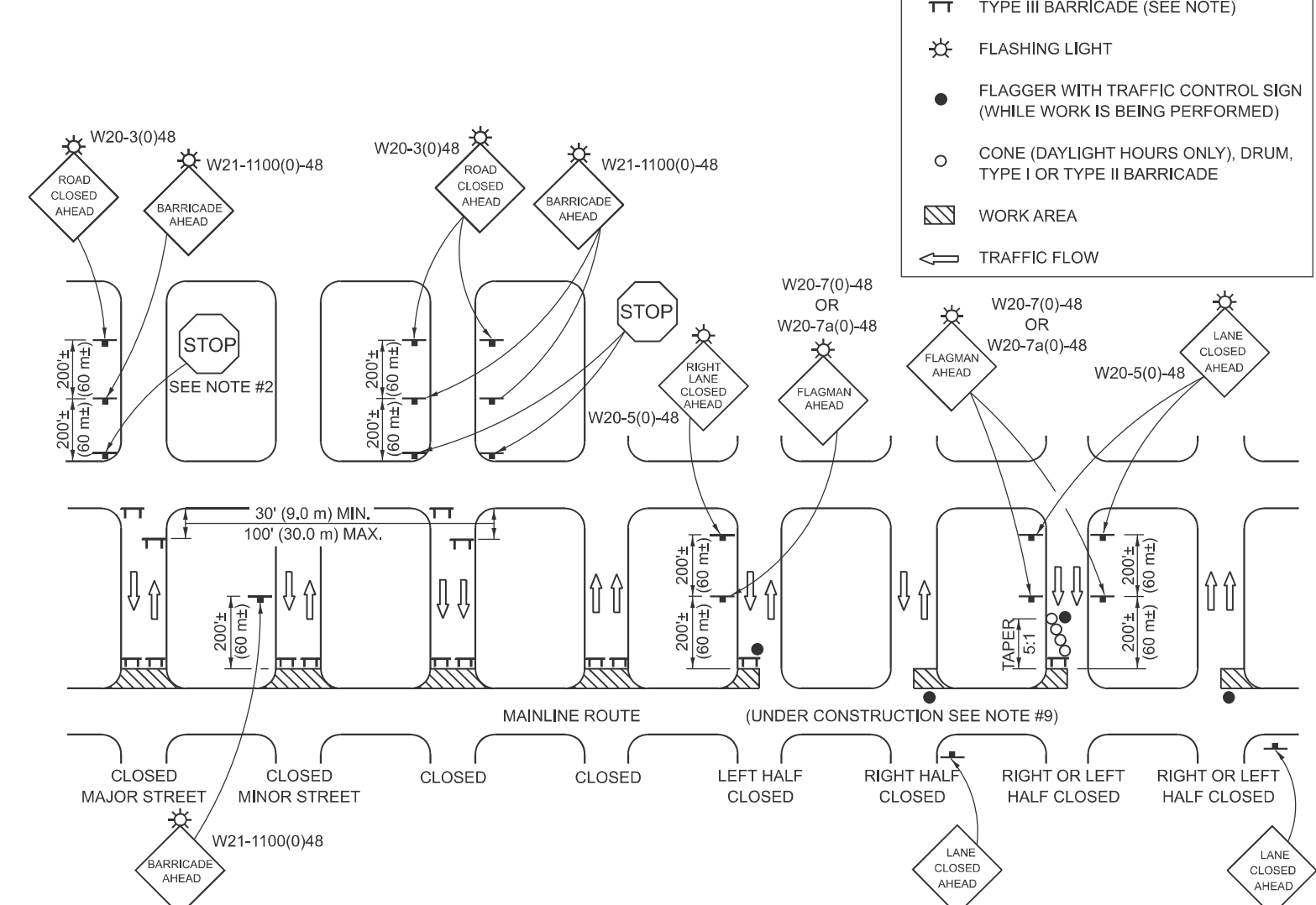
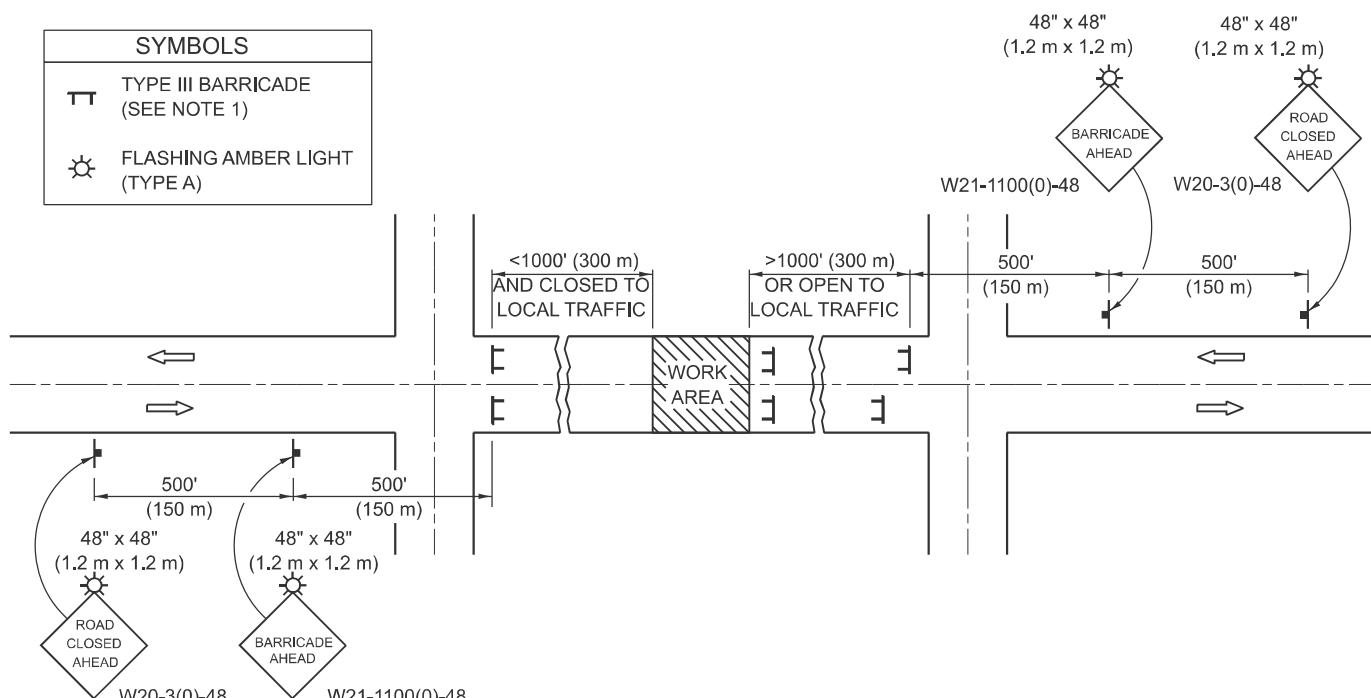
AS-BUILT PLANS (INFORMATION ONLY)  
S.N. 057-0161  
SCALE: SHEET 11 OF 11 SHEETS STA. TO STA.

FAI RTE.	SECTION	COUNTY	TOTAL SHEETS	SHEET NO.
74 & 55	(57-8.57-22.57-23)BR-1	MCLEAN	25	24
CONTRACT NO. 70H45				
ILLINOIS FED. AID PROJECT				



## ROAD CLOSURE

## SIDEROAD / STREET CLOSURE



SYMBOLS	
	TYPE III BARRICADE (SEE NOTE 1)
	FLASHING LIGHT
	FLAGGER WITH TRAFFIC CONTROL SIGN (WHILE WORK IS BEING PERFORMED)
	CONE (DAYLIGHT HOURS ONLY), DRUM, TYPE I OR TYPE II BARRICADE
	WORK AREA
	TRAFFIC FLOW

### GENERAL NOTES

- TYPE III BARRICADES SHALL BE AS SHOWN ON STANDARD 701901 "TYPICAL APPLICATIONS OF TYPE III BARRICADES CLOSING A ROAD". EACH TYPE III BARRICADE SHALL HAVE TWO FLASHING AMBER LIGHTS MOUNTED ABOVE IT.
- IF THE ROAD IS OPEN TO LOCAL TRAFFIC OR EXCEEDS 1000' (300 m), ANOTHER SET OF TYPE III BARRICADES, EQUIPPED AS IN NOTE 1 ABOVE, SHALL BE PLACED AT EACH END OF THE WORK AREA.
- WHEN A STOP CONDITION EXISTS, NO SIGNS ARE REQUIRED IN ADVANCE OF THE "STOP" SIGN WHEN THE ROAD IS CLOSED WITHIN 100' (30 m) OF THE INTERSECTION.
- STANDARD 701901 SHALL APPLY FOR THE PLACEMENT & DESIGN OF TYPE III BARRICADES.
- IF A TYPE III BARRICADE WITH AN ATTACHED SIGN PANEL WHICH MEETS NCHRP 350 IS NOT AVAILABLE, THE SIGNS MAY BE MOUNTED ON AN NCHRP 350 TEMPORARY SIGN SUPPORT DIRECTLY IN FRONT OF THE BARRICADE.
- REFLECTORIZED STRIPING SHALL APPEAR ON BOTH SIDES OF THE TYPE III BARRICADES IF ROAD IS OPEN TO LOCAL TRAFFIC.
- ALL SIGNS SHALL BE POST MOUNTED IF THE CLOSURE TIME EXCEEDS FOUR DAYS.
- A MINIMUM OF TWO FLASHING LIGHTS SHALL BE USED AT NIGHT ON EACH APPROACH IN ADVANCE OF THE WORK AREA. FLASHING LIGHTS SHALL BE INSTALLED ABOVE THE FIRST TWO SIGNS IN THE SERIES.
- LONGITUDINAL DIMENSIONS MAY BE ADJUSTED SLIGHTLY TO FIT FIELD CONDITIONS.
- FORMS BT. 725 AND BT. 726 ARE REQUIRED.
- WHEN A SIDEROAD INTERSECTS THE HIGHWAY ON WHICH WORK IS BEING PERFORMED, ADDITIONAL TRAFFIC DEVICES SHALL BE ERECTED AND PROVIDED AS DIRECTED BY THE ENGINEER.
- AN ADDITIONAL SIGN MAY BE REQUIRED AT A MAJOR INTERSECTING ROAD IN ADVANCE OF THE CLOSURE. THE ADDITIONAL SIGN SHALL GIVE THE DISTANCE TO THE BARRICADE IN MILES OR FRACTIONS OF A MILE.

### GENERAL NOTES

- TYPE III BARRICADES SHALL BE AS SHOWN ON "TYPICAL APPLICATIONS OF TYPE III BARRICADES CLOSING A ROAD". EACH TYPE III BARRICADE SHALL HAVE TWO FLASHING AMBER LIGHTS MOUNTED ABOVE IT.
- WHERE A STOP CONDITION EXISTS, AS SHOWN ABOVE, WARNING SIGNS MAY BE OMITTED IN ADVANCE OF THE "STOP" SIGN.
- STANDARD 701901 SHALL APPLY FOR THE PLACEMENT & MANUFACTURE OF TYPE III BARRICADES.
- ALL SIGNS SHALL BE POST MOUNTED IF THE CLOSURE TIME EXCEEDS FOUR DAYS.
- ONE FLASHING LIGHT IS REQUIRED ABOVE EACH ADVANCE WARNING SIGN DURING HOURS OF DARKNESS.
- LONGITUDINAL DIMENSIONS MAY BE ADJUSTED SLIGHTLY TO FIT FIELD CONDITIONS.
- FORMS BT 725 AND BT 726 ARE REQUIRED.
- THE MAINLINE ROUTE TEMPORARY TRAFFIC CONTROL SHALL BE IN ACCORDANCE WITH THE PLANS, SPECIAL PROVISIONS AND STANDARD SPECIFICATIONS.
- ALL FLAGGERS REQUIRED AT SIDE ROADS AND ENTRANCES REMAINING OPEN TO TRAFFIC AND/OR ADDITIONAL BARRICADES REQUIRED BY THE ENGINEER TO CLOSE SIDE ROADS AND ENTRANCES WILL BE PAID FOR ACCORDING TO ARTICLE 109.04.

Note: All dimensions are in INCHES (millimeters) unless otherwise shown.

### DISTRICT 5 DETAIL NO. 7020000

MODEL: 70200000  
FILE NAME: c:\pwworking\ericshawlerresid100818010570H45-Shh-Detail\_70200000.dgn

USER NAME = eric.shawler	DESIGNED -	REVISED - 11/06
	DRAWN -	REVISED - 12/07
PLOT SCALE = \$SCALE\$	CHECKED -	REVISED - 09/09 KJT
PLOT DATE = 11/15/2024	DATE -	REVISED -

STATE OF ILLINOIS  
DEPARTMENT OF TRANSPORTATION

TRAFFIC CONTROL & PROTECTION DEVICES  
(ROAD & SIDEROAD / STREET CLOSURES)

SCALE: SHEET 1 OF 1 SHEETS STA. TO STA.

F.A.I RTE.	SECTION	COUNTY	TOTAL SHEETS	SHEET NO.
74 & 55	(57-8.57-22,57-23)BR-1	MCLEAN	25	25

CONTRACT NO. 70H45  
ILLINOIS FED. AID PROJECT