

STATE OF ILLINOIS
DEPARTMENT OF TRANSPORTATION

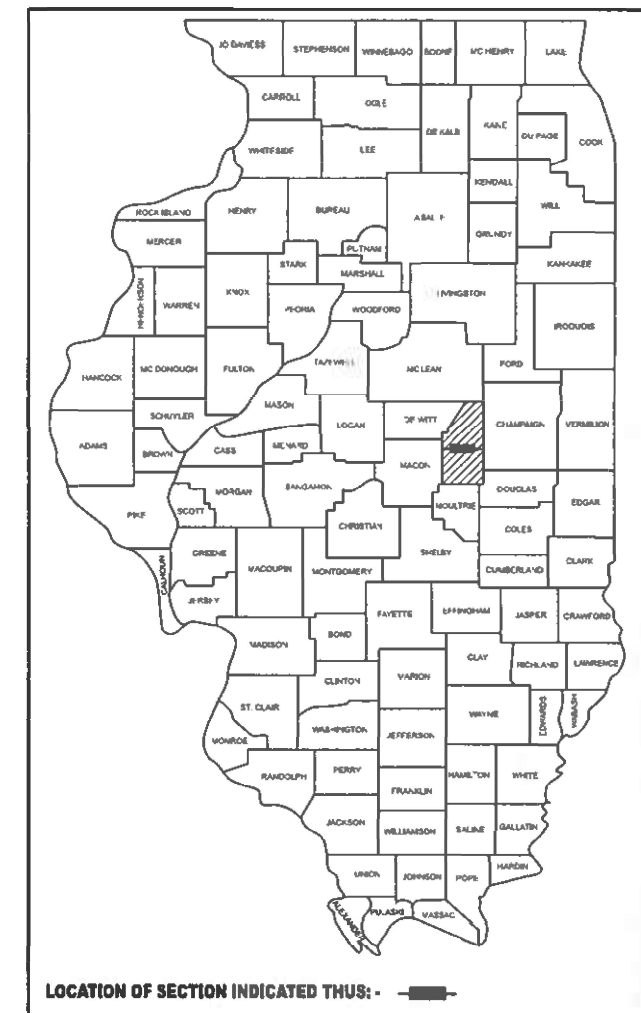
FAI RTE	SECTION	COUNTY	TOTAL SHEETS	SHEET NO.
74	(74-2)CJS	PIATT	6	1
		ILLINOIS	CONTRACT NO. 70H52	

FOR INDEX OF SHEETS, SEE SHEET NO. 2
FOR SUMMARY OF QUANTITIES, SEE SHEET NO. 3

PROPOSED
HIGHWAY PLANS

FAI ROUTE 74 (I-74)
SECTION (74-2)CJS
NHPP-EJXS(112)
CONTRACT NO. 70H52
CRACK & JOINT SEALING
PIATT COUNTY
C-95-043-25

P-95-014-25



CURRENT TRAFFIC DATA

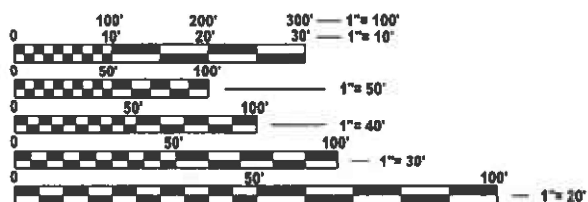
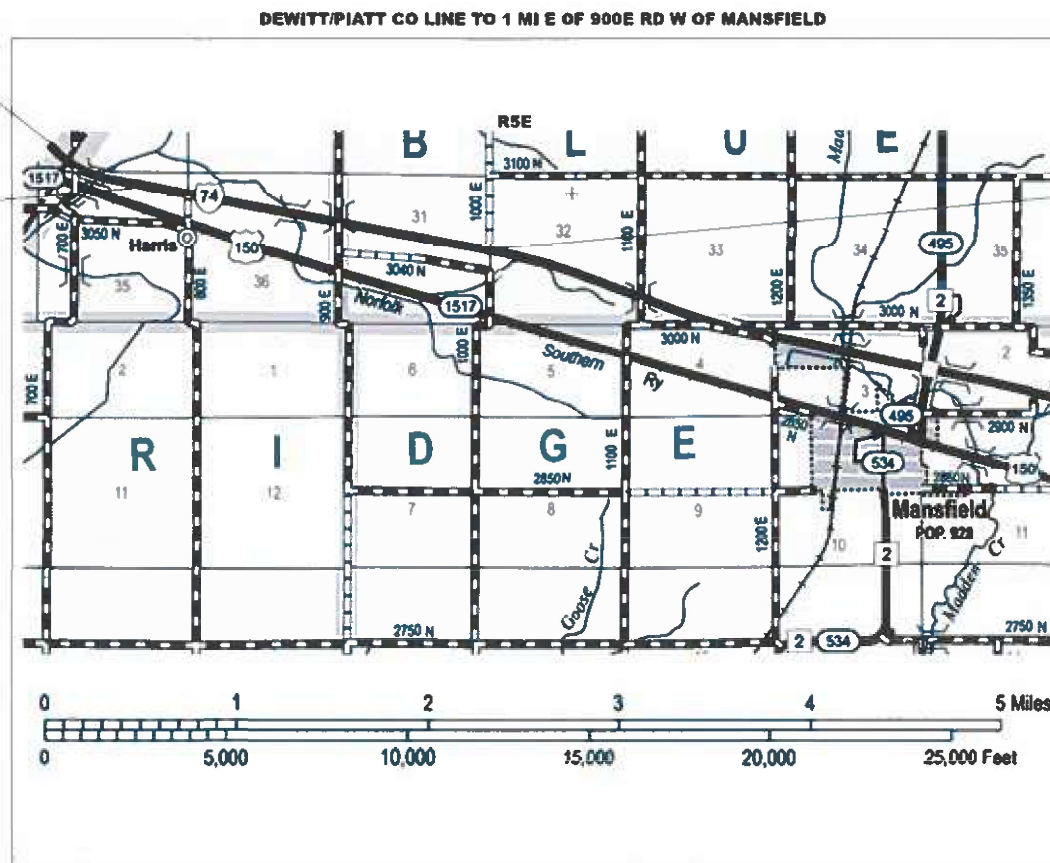
FAI 74 LEG "A"
2024 ADT = 21,500
P.U.&P.C.% = 66.9
SU% = 3.8
MU% = 29.3

TRAFFIC DATA LOCATION

LEG "A" = Leg "A" is I-74 from DeWitt Co. line to 1.0 mile E. of 900E Rd W. of Mansfield in Piatt Co.

BEGIN PROJECT
STA. 908+55.00 EB
STA. 910+03.00 WB

BRIDGE OMISSION
S.N. 074-0037 (EB)
STA. 924+03.15 TO STA. 924+07.75 EB
S.N. 074-0039 (WB)
STA. 924+44.98 TO STA. 924+55.69 WB



FULL SIZE PLANS HAVE BEEN PREPARED USING STANDARD ENGINEERING SCALES. REDUCED SIZED PLANS WILL NOT CONFORM TO STANDARD SCALES. IN MAKING MEASUREMENTS ON REDUCED PLANS, THE ABOVE SCALES MAY BE USED.

J.U.L.I.E.
JOINT UTILITY LOCATION INFORMATION FOR EXCAVATION
1-800-892-0123
OR 811
TOWNSHIP: BLUE RIDGE

PROJECT ENGINEER: RYAN T. CARROLL
PROJECT DESIGNER: JACKSON CHEN
PHONE NUMBER: (217)465-4181
CONTRACT NO. 70H52

GROSS LENGTH = 14,855.00 FT. = 2.813 MILES
NET LENGTH = 14,550.40 FT. = 2.756 MILES

STATE OF ILLINOIS
DEPARTMENT OF TRANSPORTATION

SUBMITTED 12/10 20 24
Kensil A. Barnett
REGIONAL ENGINEER

January 31 2025
Scott A. [Signature]
ENGINEER OF DESIGN AND ENVIRONMENT

January 31 2025
[Signature]
DIRECTOR OF HIGHWAYS PROJECT IMPLEMENTATION

PRINTED BY THE AUTHORITY
OF THE STATE OF ILLINOIS

INDEX OF SHEETS

COVER SHEET	1
INDEX OF SHEETS	2
LIST OF HIGHWAY STANDARDS	2
GENERAL NOTES	2
COMMITMENTS	2
SUMMARY OF QUANTITIES	3
EXISTING TYPICAL SECTIONS	4
SCHEDULE OF QUANTITIES	5
DISTRICT 5 DETAIL NO. 45AAAA - CRACK AND JOINT SEALING	6

GENERAL NOTES

G.N.-100A
 ELECTRONIC FILES AND/OR ELECTRONIC SURVEY INFORMATION INCLUDING CADD
 FILES WILL NOT BE AVAILABLE TO THE CONTRACTOR

LIST OF STANDARDS

STANDARD NO.	DESCRIPTION
000001-08	STANDARD SYMBOLS, ABBREVIATIONS AND PATTERNS
001006	DECIMAL OF AN INCH AND A FOOT
701400-12	APPROACH TO LANE CLOSURE, FREEWAY/EXPRESSWAY
701401-13	LANE CLOSURE, FREEWAY/EXPRESSWAY
701901-10	TRAFFIC CONTROL DEVICES

COMMITMENTS

NO COMMITMENTS HAVE BEEN MADE FOR THIS PROJECT

MODEL: General Notes (Sheet)
 FILE NAME: c:\pwworking\illinois.gov\jackson.chen@illinois.gov\1058.03\0570H52-Sht-GenNotes.dgn

USER NAME = jackson.chen	DESIGNED -	REVISED -	STATE OF ILLINOIS DEPARTMENT OF TRANSPORTATION	INDEX OF SHEETS, LIST OF STANDARDS, GENERAL NOTES & COMMITMENTS	F.A.I RTE.	SECTION	COUNTY	TOTAL SHEETS	SHEET NO.	
	DRAWN -	REVISED -			74	(74-2)CJS	PIATT	6	2	
	CHECKED -	REVISED -			CONTRACT NO. 70H52					
PLOT DATE = 11/19/2024	DATE -	REVISED -			SCALE:	SHEET 1	OF 1	SHEETS	STA.	TO STA.

SUMMARY OF QUANTITIES

LOCATION OF WORK: FAI 74 (I-74)
 INTERSTATE
 RURAL
 STA. 909+00
 STA. 1058+10
 PIATT

FUNDING BREAKOUT: 90% FEDERAL / 10% STATE
 CONSTRUCTION TYPE CODE: 0005

CODE NO.	ITEM	UNIT	TOTAL QUANTITY	ROADWAY QUANTITY
45100200	CRACK FILLING	POUND	5,819.0	5,819.0
67100100	MOBILIZATION	L SUM	1.00	1.00
70100800	TRAFFIC CONTROL AND PROTECTION, STANDARD 701401	L SUM	1.00	1.00
70107025	CHANGEABLE MESSAGE SIGN	CAL DA	6.00	6.00
Z0013798	CONSTRUCTION LAYOUT	L SUM	1.00	1.00

MODEL: SOQ (Sheet)
 FILE NAME: c:\p\work\pvt\illinois.gov\1068030\1057\0H52-SH-SOQ.dgn

USER NAME = jackson.chen PLOT DATE = 12/10/2024	DESIGNED - DRAWN - CHECKED - DATE -	REVISED - REVISED - REVISED - REVISED -	STATE OF ILLINOIS DEPARTMENT OF TRANSPORTATION	SUMMARY OF QUANTITIES	<table border="1" style="width: 100%; border-collapse: collapse;"> <tr> <td style="font-size: 8px;">F.A.I RTE.</td> <td style="font-size: 8px;">SECTION</td> <td style="font-size: 8px;">COUNTY</td> <td style="font-size: 8px;">TOTAL SHEETS</td> <td style="font-size: 8px;">SHEET NO.</td> </tr> <tr> <td style="text-align: center;">74</td> <td style="text-align: center;">(74-2)CJS</td> <td style="text-align: center;">PIATT</td> <td style="text-align: center;">6</td> <td style="text-align: center;">3</td> </tr> <tr> <td colspan="5" style="text-align: center; font-size: 8px;">CONTRACT NO. 70H52</td> </tr> <tr> <td colspan="5" style="text-align: center; font-size: 8px;">ILLINOIS FED. AID PROJECT</td> </tr> </table>	F.A.I RTE.	SECTION	COUNTY	TOTAL SHEETS	SHEET NO.	74	(74-2)CJS	PIATT	6	3	CONTRACT NO. 70H52					ILLINOIS FED. AID PROJECT				
F.A.I RTE.	SECTION	COUNTY	TOTAL SHEETS	SHEET NO.																					
74	(74-2)CJS	PIATT	6	3																					
CONTRACT NO. 70H52																									
ILLINOIS FED. AID PROJECT																									
			SCALE:	SHEET 1 OF 1 SHEETS	STA. TO STA.																				

EXISTING TYPICAL CROSS SECTION

F.A.I. 74

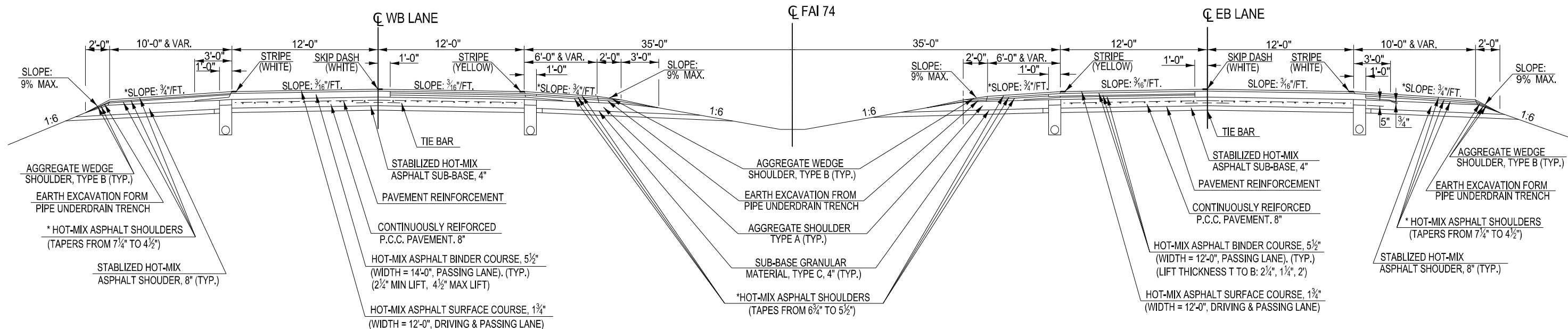
OMISSION
 (E.B.); STATION 921+50.25 TO STATION 923+56.07; S.N. 074-0037
 (W.B.); STATION 921+93.28 TO STATION 924+02.65; S.N. 074-0038

WESTBOUND LANES

STATION 910+04.00 TO STATION 1056+78.00

EASTBOUND LANES

STATION 909+55.00 TO STATION 1056+30.00



MODEL: Typical 1 (Sheet)
 FILE NAME: c:\pawork\civil\illinois.gov\10568030\10570052-Str-Typicals.dgn

USER NAME = jackson.chen	DESIGNED -	REVISED -
	DRAWN -	REVISED -
	CHECKED -	REVISED -
PLOT DATE = 11/19/2024	DATE -	REVISED -

STATE OF ILLINOIS
 DEPARTMENT OF TRANSPORTATION

SCALE: SHEET 1 OF 1 SHEETS STA. TO STA.

F.A.I. RTE.	SECTION	COUNTY	TOTAL SHEETS	SHEET NO.
74	(74-2)CJS	PIATT	6	4
CONTRACT NO. 70H52				
ILLINOIS FED. AID PROJECT				

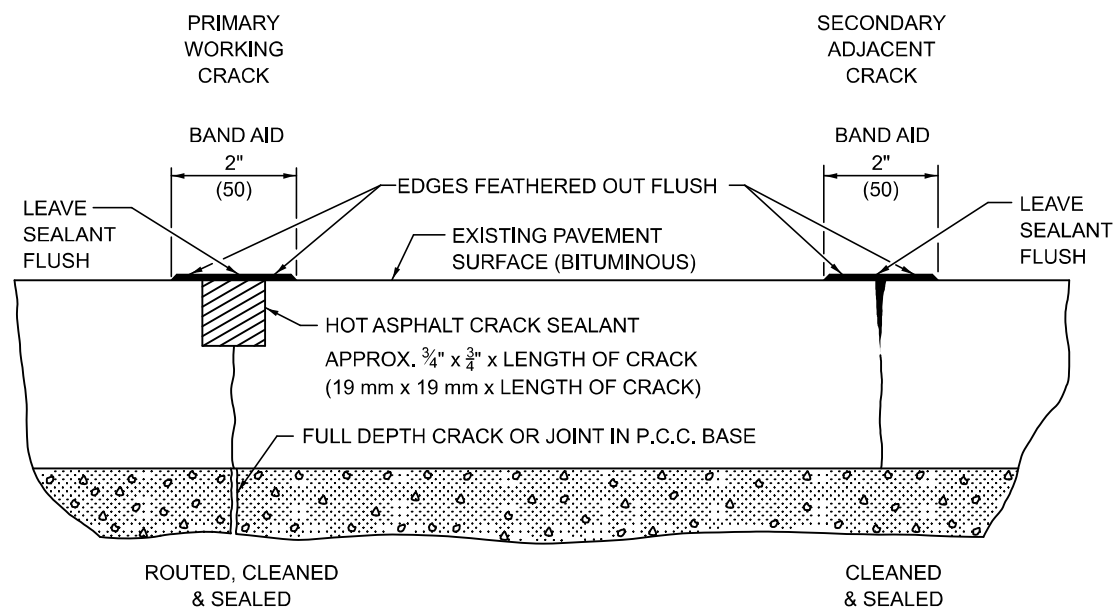
SCHEDULE OF QUANTITIES

DIRECTION	STATION	TO	STATION	LENGTH (FT)	DESCRIPTION	CRACK FILLING (LB/FT)	45100200 CRACK FILLING (POUND)
PIATT COUNTY - I-74 - RURAL							
EB	909+55.00		921+03.15	1148.15	CL JOINT	0.2	229.63
EB	924+07.75		1058+10.00	13402.25	CL JOINT	0.2	2680.45
EB PIATT COUNTY RURAL TOTAL							2910.08
WB	909+55.00		921+44.98	1189.98	CL JOINT	0.2	238.00
WB	924+55.69		1058+10.00	13354.31	CL JOINT	0.2	2670.86
WB PIATT COUNTY RURAL TOTAL							2908.86
PIATT COUNTY RURAL TOTAL							5818.94
TOTAL THIS SHEET							5818.94

MODEL: Schedule Sheet
 FILE NAME: c:\p\work\pvt\illinois.gov\1068030\10570H52-Sht-Schedules.dgn

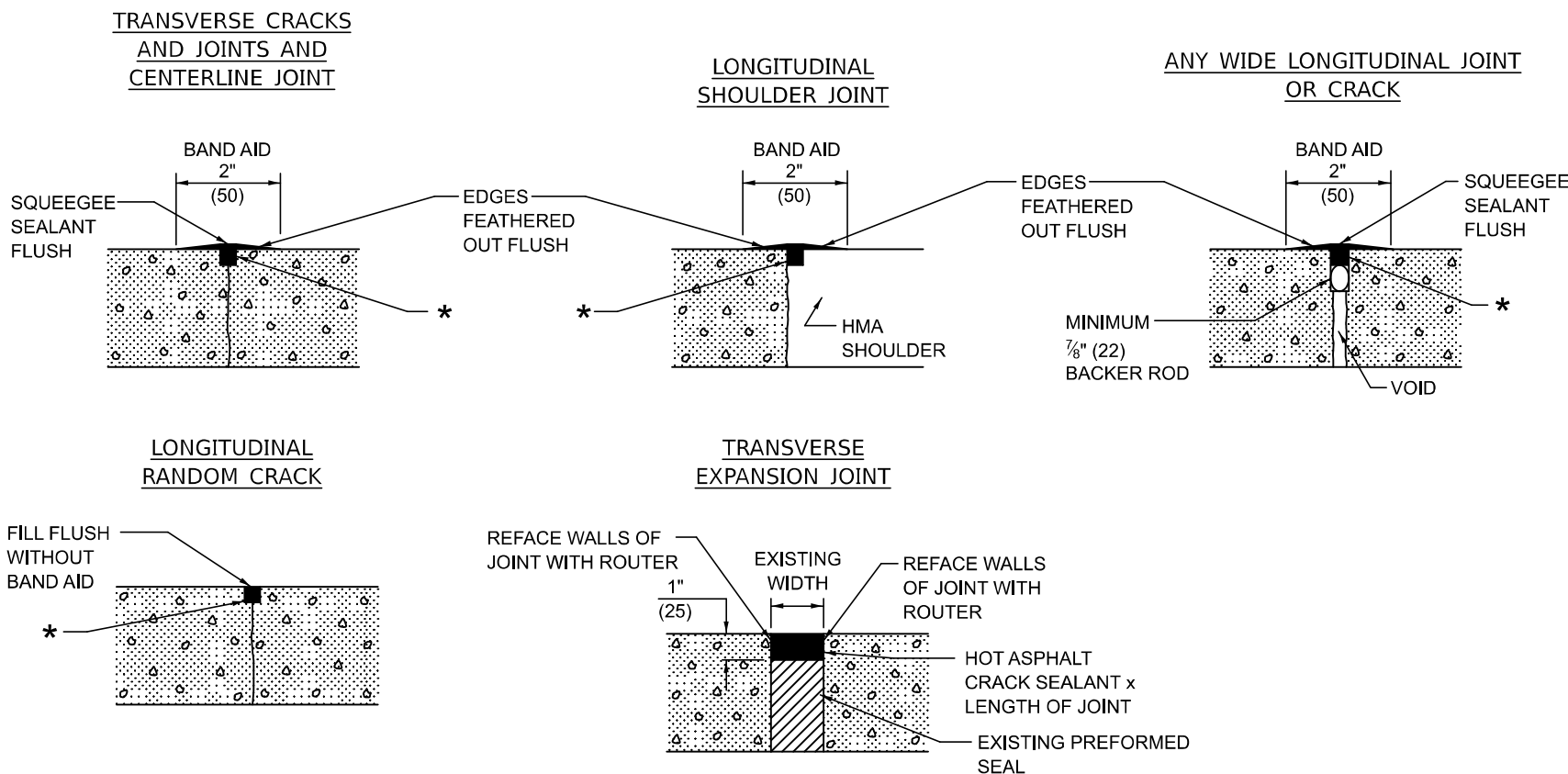
HMA PAVEMENT

(USE PAY ITEMS : 45100100 CRACK ROUTING (PAVEMENT)
AND 45100200 CRACK FILLING)



PCC PAVEMENT

(USE PAY ITEMS : 45200100 JOINT OR CRACK ROUTING (P.C.C. PAVEMENT & SHOULDER)
AND 45200300 JOINT OR CRACK FILLING)



* HOT ASPHALT CRACK SEALANT
APPROX. 3/4" x 3/4" x LENGTH OF CRACK.
ACTUAL QUANTITY WILL VARY AS NEEDED FOR
PRIMARY OR SECONDARY WORKING CRACK.

Note: All dimensions are in INCHES
(millimeters) unless otherwise shown.

DISTRICT 5 DETAIL NO. 45AAAAAA

USER NAME = jackson.chen	DESIGNED -	REVISED - 12/06
	DRAWN -	REVISED - 08/07
	CHECKED -	REVISED - 12/08
PLOT DATE = 11/19/2024	DATE -	REVISED -

**STATE OF ILLINOIS
DEPARTMENT OF TRANSPORTATION**

CRACK AND JOINT SEALING

SCALE: SHEET 1 OF 1 SHEETS STA. TO STA.

F.A.I. RTE.	SECTION	COUNTY	TOTAL SHEETS	SHEET NO.
74	(74-2)CJS	PIATT	6	6
CONTRACT NO. 70H52				
ILLINOIS FED. AID PROJECT				

MODEL: 45AAAAAA (Sheet)
FILE NAME: c:\p\work\pcc\illinois.gov\11068030\11068030-D570H52-Sht-Detail_45AAAAAA.dgn