

RTE.	SECTION	COUNTY	TOTAL SHEETS	SHEET NO.
VAR.	D6 LIGHTING 2025	VARIOUS	3	1
		ILLINOIS	CONTRACT NO. 72602	

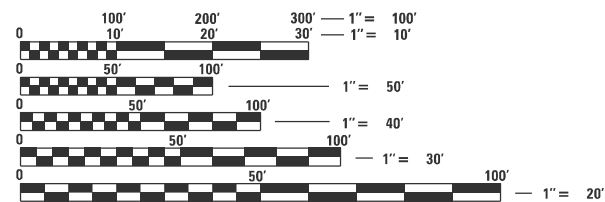
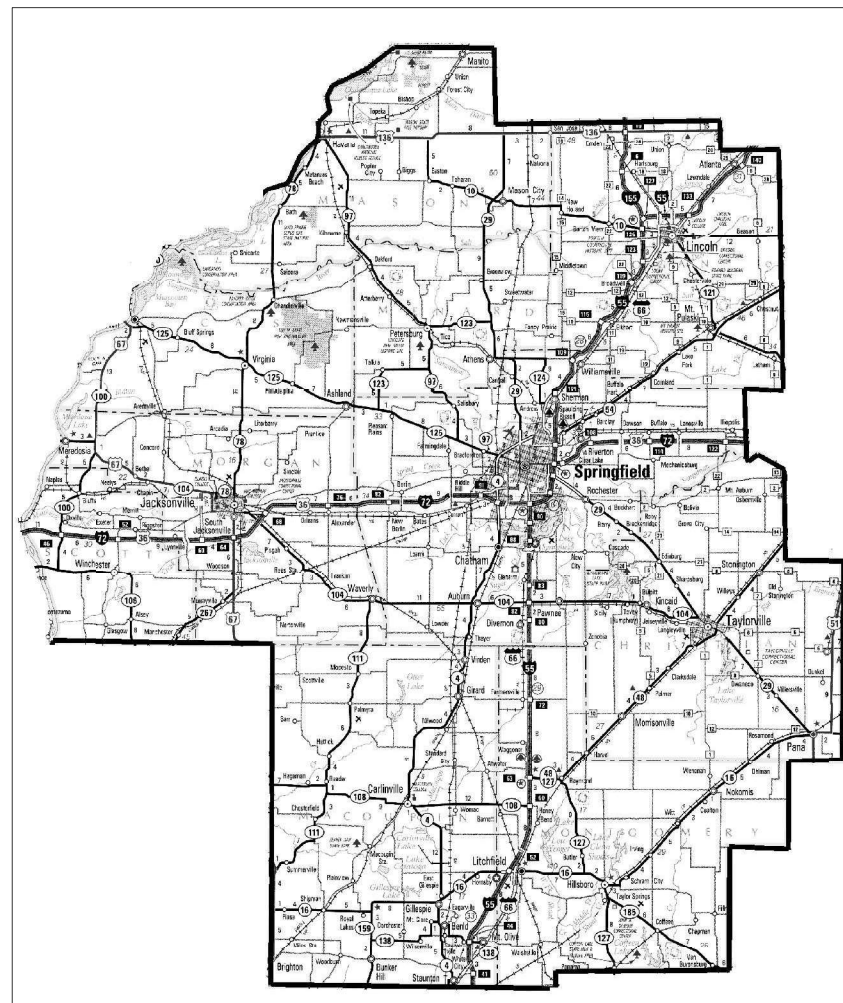
STATE OF ILLINOIS
DEPARTMENT OF TRANSPORTATION
DIVISION OF HIGHWAYS

**PROPOSED
IMPROVEMENTS**

VARIOUS ROUTES
SECTION D6 LIGHTING 2025
SIGNAL & LIGHTING MAINTENANCE

VARIOUS COUNTIES
C96-058-25

FOR INDEX OF SHEETS, SEE SHEET NO. 2



FULL SIZE PLANS HAVE BEEN PREPARED USING STANDARD ENGINEERING SCALES, REDUCED SIZED PLANS WILL NOT CONFORM TO STANDARD SCALES. IN MAKING MEASUREMENTS ON REDUCED PLANS, THE ABOVE SCALES MAY BE USED.

J.U.L.I.E.
JOINT UTILITY LOCATION INFORMATION FOR EXCAVATION
1-800-892-0123
OR 811

PROJECT ENGINEER : MIKE HAMBY – (217)524-7765
PROJECT MANAGER : TIM SHARP – (217)524-9160

CONTRACT NO. 72602

LOCATION MAP

STATE OF ILLINOIS
DEPARTMENT OF TRANSPORTATION
DIVISION OF HIGHWAYS

SUBMITTED December 17, 2024
July P. May REGIONAL ENGINEER
January 31, 2025
Scott A. Etk ENGINEER OF DESIGN AND ENVIRONMENT
January 31, 2025
Quarry 5 DIRECTOR OF HIGHWAYS PROJECT IMPLEMENTATION



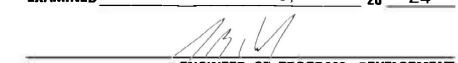
PRINTED BY THE AUTHORITY
OF THE STATE OF ILLINOIS

INDEX OF SHEETS

1. COVER
2. INDEX OF SHEETS AND HIGHWAY STANDARDS
3. SUMMARY OF QUANTITIES AND GENERAL NOTES

HIGHWAY STANDARDS

- 701001-02 OFF-RD OPERATIONS, 2L, 2W, MORE THAN 15' AWAY FROM EDGE OF PAVEMENT
- 701006-05 OFF-RD OPERATIONS, 2L, 2W, 15' TO 24" FROM PAVEMENT EDGE
- 701011-04 OFF-RD MOVING OPERATION, 2L, 2W, DAY ONLY
- 701101-05 OFF-RD OPERATIONS, MULTILANE, 15' TO 24" FROM PAVEMENT EDGE
- 701106-02 OFF RD OPERATIONS, MULTILANE, MORE THAN 15' AWAY
- 701201-05 LANE CLOSURE, 2L, 2W, DAY ONLY, FOR SPEEDS \geq 45 MPH
- 701206-05 LANE CLOSURE, 2L, 2W, NIGHT ONLY, FOR SPEEDS \geq 45 MPH
- 701301-04 LANE CLOSURE, 2L, 2W, SHORT TIME OPERATIONS
- 701306-04 LANE CLOSURE, 2L, 2W, SLOW MOVING OPERATIONS DAY ONLY, FOR SPEED $>$ 45 MPH
- 701311-03 LANE CLOSURE, 2L, 2W, MOVING OPERATIONS - DAY ONLY
- 701400-12 APPROACH TO LANE CLOSURE, FREEWAY/EXPRESSWAY
- 701406-13 LANE CLOSURE, FREEWAY/EXPRESSWAY, DAY OPERATIONS ONLY
- 701411-09 LANE CLOSURE, MULTILANE, AT ENTRANCE OR EXIT RAMP, FOR SPEEDS \geq 45 MPH
- 701421-08 LANE CLOSURE, MULTILANE, DAY OPERATIONS ONLY, OR SPEEDS \geq 45 MPH TO 55 MPH
- 701422-10 LANE CLOSURE, MULTILANE, FOR SPEEDS $>$ 45 MPH TO 55 MPH
- 701426-09 LANE CLOSURE, MULTILANE, INTERMITTENT OR MOVING OPER., FOR SPEEDS $>$ 45 MPH
- 701427-05 LANE CLOSURE, MULTILANE, INTERMITTENT OR MOVING OPER., FOR SPEEDS $<$ 40 MPH
- 701428-01 TRAFFIC CONTROL SETUP AND REMOVAL, FREEWAY/EXPRESSWAY
- 701446-11 TWO LANE CLOSURE FREEWAY/EXPRESSWAY
- 701451-05 RAMP CLOSURE FREEWAY/EXPRESSWAY
- 701456-05 PARTIAL EXIT RAMP CLOSURE FREEWAY/EXPRESSWAY
- 701501-06 URBAN LANE CLOSURE, 2L, 2W, UNDIVIDED
- 701502-09 URBAN LANE CLOSURE, 2L, 2W, WITH BIDIRECTIONAL LEFT TURN LANE
- 701601-09 URBAN LANE CLOSURE, MULTILANE, 1W OR 2W WITH NONTRAVERSABLE MEDIAN
- 701602-10 URBAN LANE CLOSURE, MULTILANE, 2W WITH BIDIRECTIONAL LEFT TURN LANE
- 701701-10 URBAN LANE CLOSURE, MULTILANE INTERSECTION
- 701801-06 SIDEWALK, CORNER OR CROSSWALK CLOSURE
- 701901-10 TRAFFIC CONTROL DEVICES
- 830006-05 LIGHT POLE ALUMINUM DAVIT ARM
- 830021-04 LIGHT POLE STEEL TENON TOP
- 838001-01 BREAKAWAY DEVICES
- 000001-08 STANDARD SYMBOLS, ABBREVIATIONS AND PATTERNS

STATE OF ILLINOIS DEPARTMENT OF TRANSPORTATION DIVISION OF HIGHWAYS DISTRICT 6	
EXAMINED _____	December 20, _____ 20 ____ 24
 ENGINEER OF OPERATIONS	
EXAMINED _____	December 20, _____ 20 ____ 24
 ENGINEER OF PROJECT IMPLEMENTATION	
EXAMINED _____	December 20, _____ 20 ____ 24
 ENGINEER OF PROGRAM DEVELOPMENT	

REV - MS

FILE NAME =	USER NAME = Timothy.Sharp	DESIGNED -	REVISED -	STATE OF ILLINOIS DEPARTMENT OF TRANSPORTATION	INDEX OF SHEETS AND HIGHWAY STANDARDS	RTE.	SECTION	COUNTY	TOTAL SHEETS	SHEET NO.	
pw://idot-pw.bentley.com/PWIDOT/Document/IDOT Offices/District 6/DRD Projects/D672600/Drawings/CADsheets/72602-sht-2-gennote.dwg	PLT SCALE = #SCALE#	CHECKED -	REVISED -			VAR.	D6 LIGHTING 2025	VARIOUS	3	2	
Default	PLT DATE = 12/18/2024	DATE -	REVISED -			SCALE: _____ SHEET OF SHEETS STA. TO STA.		CONTRACT NO. 72602			
						ILLINOIS FED. AID PROJECT					

CODE NO.	ITEM	UNIT	QUANTITY	6-01600-9961	6-00361-9961
				CONSTR. CODE	CONSTR. CODE
				TOTAL QUANTITY	TOTAL QUANTITY
				100% MCHD 0021	100% STATE 0021
				RURAL	RURAL
82110007	LUMINAIRE, LED, ROADWAY, OUTPUT DESIGNATION G	EACH	50	27	23
83060830	LIGHT POLE, GALVANIZED STEEL, 45 FT. M.H., TENON MOUNT	EACH	14	8	6
83060850	LIGHT POLE, GALVANIZED STEEL, 55 FT. M.H., TENON MOUNT	EACH	6	4	2
X1400035	150W HPS LAMP/NON CYCLING	EACH	20	11	9
X1400036	250W HPS LAMP/NON CYCLING	EACH	250	135	115
X1400037	400W HPS LAMP/NON CYCLING	EACH	90	49	41
X1400039	150W-240V HPS TRANSFORMER KIT	EACH	6	4	2
X1400040	250W-240V HPS TRANSFORMER KIT (GE)	EACH	20	13	7
X1400041	250W-480V HPS TRANSFORMER KIT (GE)	EACH	20	11	9
X1400042	250W-480V HPS TRANSFORMER KIT (HOLOPHANE)	EACH	20	11	9
X1400043	12" SIGNAL HEAD W/O VISOR (POLYCARBONATE)	EACH	20	11	9
X1400044	12" SIGNAL HEAD VISOR (POLYCARBONATE)	EACH	20	11	9
X1400045	ELASTIMOLD FUSE HOLDER	EACH	35	19	16
X1400046	RED MARKING PAINT	EACH	75	40	35
X1400047	SOLID STATE NEMA FLASHER	EACH	10	7	3
X1400048	SOLID STATE NEMA LOAD SWITCH	EACH	30	16	14
X1400049	12" LED MODULE (GREEN)	EACH	15	8	7
X1400050	12" LED MODULE (YELLOW)	EACH	10	7	3
X1400051	12" LED MODULE (RED)	EACH	15	8	7
X1400052	250W-240V HPS TRANSFORMER KIT (HOLOPHANE)	EACH	10	7	3
X1400054	150W-480V HPS TRANSFORMER KIT	EACH	10	7	3
X1400055	400W-240V HPS TRANSFORMER KIT	EACH	10	7	3
X1400056	400W-480V HPS TRANSFORMER KIT	EACH	10	7	3
X1400057	FNM 10 BUSS FUSE	EACH	150	81	69
X1400058	10 AMP CONTROL FUSE	EACH	50	27	23
X1400063	#6 USE WIRE	FOOT	2000	1,080	920
X1400064	#10 USE WIRE	FOOT	3500	1,890	1,610
X1400066	SURRESTOR	EACH	34	18	16
X1400067	SET 4 BREAKAWAY COUPLERS (TRANSP0 4100)	EACH	20	11	9
X1400070	50' ALUMINUM 15' DAVIT ARM POLE	EACH	3	2	1
X1400071	50' ALUMINUM 15' DUAL DAVIT ARM POLE	EACH	3	2	1
X1400074	BUS INTERFACE UNIT	EACH	12	7	5
X1400076	COBALT CONTROLLER	EACH	4	3	1
X1400209	45' ALUMINUM LIGHT POLE WITH 15' DAVIT ARM	EACH	2	1	1
X1400361	1-PORT MOXA GIGABIT ETHERNET MODULE "SFP-IGLXLCT"	EACH	4	3	1
X1400362	AUTOSCOPE VISON COMM MANAGER	EACH	2	1	1
X1400363	MOXA "ADS-510E-3GTXSFP-T" ETHERNET SWITCH WITH DIN RAIL POWER SUPPLY	EACH	4	3	1
X1400364	AXIS MODEL 06042-E DOME CAMERA ASSEMBLY	EACH	2	1	1
X8210402	LUMINAIRE MOUNTING BRACKET - SPECIAL	EACH	50	27	23
X8250230	PHOTOCELL	EACH	30	16	14
XP000001	JOURNEYMAN ELECTRICIAN	HOURLY	1010	545	465
XP000003	JOURNEYMAN ELECTRICIAN (WEEKLY OVERTIME RATE)	HOURLY	32	17	15
XP000004	JOURNEYMAN ELECTRICIAN (SATURDAY OVERTIME RATE)	HOURLY	32	17	15
XP000005	JOURNEYMAN ELECTRICIAN (SUNDAY AND HOLIDAY OVERTIME RATE)	HOURLY	32	17	15
XP000009	PICK-UP TRUCK	HOURLY	500	270	230
XP000010	BUCKET TRUCK (LENGTH LESS THAN 35 FEET)	HOURLY	180	97	83
XP000011	BUCKET TRUCK (LENGTH 35 TO 65 FEET)	HOURLY	300	162	138

GENERAL NOTES

This work is located on various routes in Cass, Christian, Logan, Macoupin, Mason, Menard, Montgomery, Morgan, Sangamon and Scott counties all located within Region 4, District 6. The work included in this section consists of maintaining and repairing the electrical systems and all other work necessary to complete this section.

The locations of the repair areas shall be determined by the engineer.

All work is to be replaced in kind or, as indicated on the contract plans or provisions.

Removal of damaged materials will include dismantling, loading, hauling, and disposal.

Any necessary traffic control will be provided by the contractor; appropriate standards are listed on Sheet No. 2. Traffic control shall not be paid for as separate pay items, but shall be considered a part of the contract.

The work site shall be left in a safe and orderly condition.

No material should be left on or near the roadway during non-working hours.

All excavated material, which includes digging or grading of any soil or fill material, with the exception of aggregate fills, must be left on, or incorporated within, the IDOT right-of-way due to environmental documentation requirements.

Any work order may be cancelled at the engineer's discretion.

English units of measurement shall govern over and supersede any metric units in this contract. Where included, metric units are for information only.

Electronic files and/or electronic survey information including CADD files will not be available for this project to the contractor.

No overnight lane closures will be allowed, unless emergency conditions exist.

Any reference to a standard in these plans shall be interpreted to mean the edition as indicated by the subnumber shown in the list of standards or the copy included in these plans.

REV - MS

FILE NAME =	USER NAME = Timothy.Sharp	DESIGNED -	REVISED -	STATE OF ILLINOIS DEPARTMENT OF TRANSPORTATION	SUMMARY OF QUANTITIES AND GENERAL NOTES	RTE.	SECTION	COUNTY	TOTAL SHEETS	SHEET NO.	
pw://idot-pw.bentley.com/PWIDOT/Document/IDOT Offices/District 6/DRD Projects/D672400/Drawings/CADsheets/72602-sht-3-S00.dgn	PLOT SCALE = *SCALE*	CHECKED -	REVISED -			VAR.	D6 LIGHTING 2025	VARIOUS	3	3	
SHT.PLAN	PLOT DATE = 11/22/2024	DATE -	REVISED -			SCALE:	SHEET	OF	SHEETS	STA.	TO STA.
						ILLINOIS FED. AID PROJECT					