

STATE OF ILLINOIS
DEPARTMENT OF TRANSPORTATION

F.A.P RTE.	SECTION	COUNTY	TOTAL SHEETS	SHEET NO.
325	114S(RS-4),116(RS-7,BDR)	MACOUPIN	19	1
		ILLINOIS	CONTRACT NO. 72831	

FOR INDEX OF SHEETS, SEE SHEET NO. 2

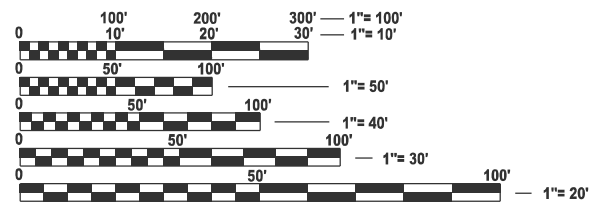
**PROPOSED
HIGHWAY PLANS**

FAP ROUTE 325 (IL 16)
SECTION 114S(RS-4),116(RS-7,BDR)

SMART OVERLAY
MACOUPIN COUNTY

C-96-039-25

FAP 325, IL 16
CLASSIFICATION - OTHER PRINC ART
PV = 92.90%
SU = 4.14%
MU = 2.96%

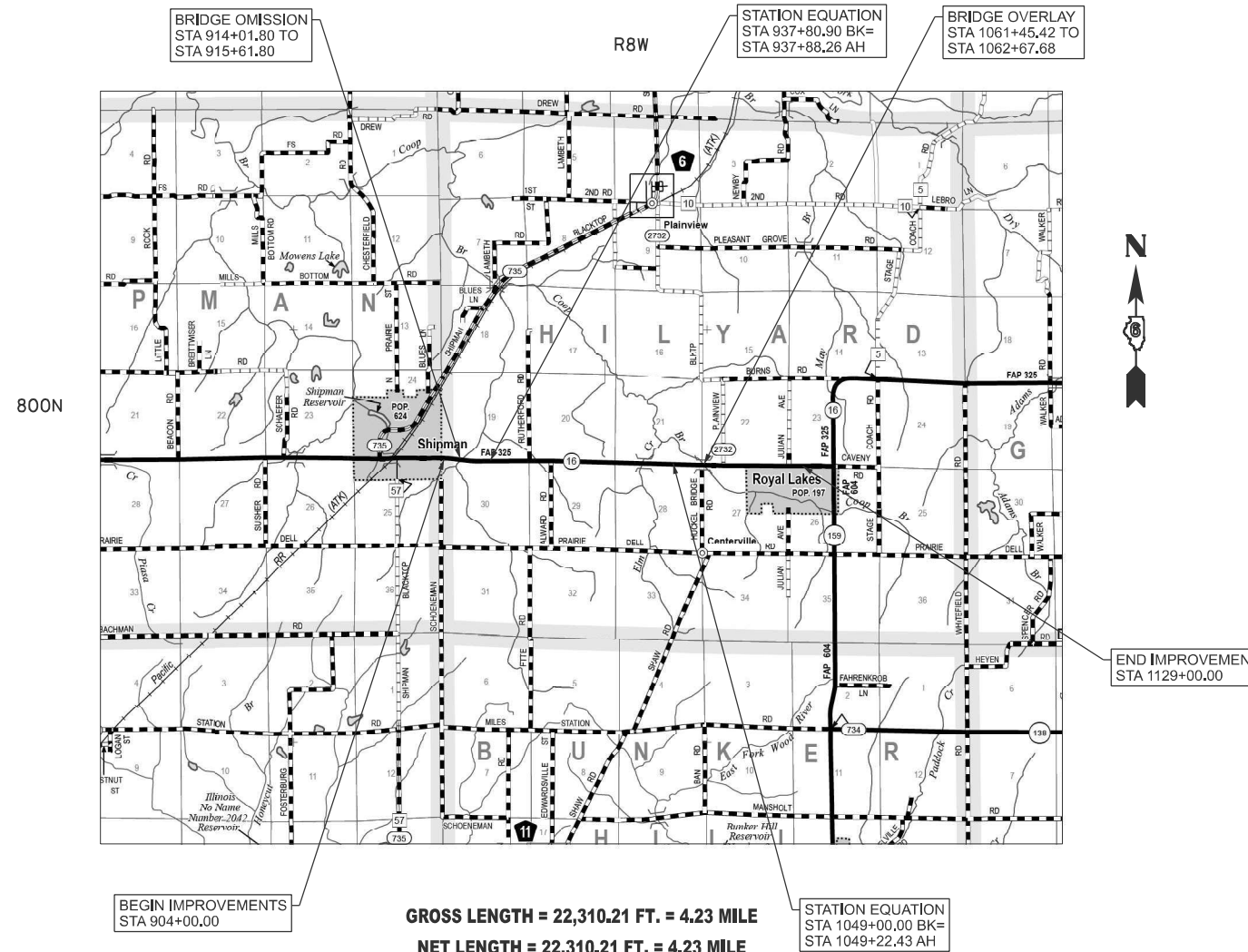


FULL SIZE PLANS HAVE BEEN PREPARED USING STANDARD ENGINEERING SCALES. REDUCED SIZED PLANS WILL NOT CONFORM TO STANDARD SCALES. IN MAKING MEASUREMENTS ON REDUCED PLANS, THE ABOVE SCALES MAY BE USED.

J.U.L.I.E.
JOINT UTILITY LOCATION INFORMATION FOR EXCAVATION
1-800-892-0123
OR 811

PROJECT ENGINEER - JAY EDWARDS (217) 785-0597
PROJECT MANAGER - JON COX (217) 782-1378

CONTRACT NO. 72831



STATE OF ILLINOIS
DEPARTMENT OF TRANSPORTATION

SUBMITTED December 12, 2024

Jay P. Myers
REGIONAL ENGINEER

January 31, 2025
Scott A. Edwards
ENGINEER OF DESIGN AND ENVIRONMENT

January 31, 2025
Jon Cox
DIRECTOR OF HIGHWAYS PROJECT IMPLEMENTATION

**PRINTED BY THE AUTHORITY
OF THE STATE OF ILLINOIS**

GENERAL NOTES

- 1 THE CONTRACTOR SHALL NOTIFY THE DISTRICT 6 BUREAU OF OPERATIONS AT (217) 785-5306 THREE WEEKS PRIOR TO IMPLEMENTING ANY TRAFFIC CONTROL.
- 2 NO PASSING ZONES SHALL BE FIELD VERIFIED AND DOCUMENTED BY THE RESIDENT ENGINEER. THE RESIDENT ENGINEER SHALL NOTIFY THE BUREAU OF OPERATIONS IF THEY HAVE CONCERNS WITH ANY NO PASSING ZONES AND AT LEAST 14 DAYS PRIOR TO PLACEMENT OF FINAL PAVEMENT MARKINGS AT 217-785-5306.

STANDARDS

- 000001-08 STANDARD SYMBOLS, ABBREVIATIONS, AND PATTERNS
- 001006 DECIMAL OF AN INCH AND OF A FOOT
- 701001-02 OFF-ROAD OPERATIONS, 2L, 2W, MORE THAN 15 FT AWAY
- 701006-05 OFF-ROAD OPERATIONS, 2L, 2W, 15 FT TO 24' FROM PAVEMENT
- 701301-04 EDGE LANE CLOSURE, 2L, 2W, SHORT TIME OPERATIONS
- 701306-04 LANE CLOSURE, 2L, 2W, SLOW MOVING OPERATIONS DAY ONLY
- 701311-03 LANE CLOSURE, 2L, 2W, MOVING OPERATIONS DAY ONLY
- 701901-10 TRAFFIC CONTROL DEVICES
- 780001-05 TYPICAL PAVEMENT MARKINGS
- 781001-04 TYPICAL APPLICATIONS RAISED REFLECTOR PAVEMENT MARKERS

Mix Use:	HMA Surface
PG:	PG 64-22
Design Air Voids:	4.0% @ N50
Mix Compositions	IL-9.5
Friction Agg.:	Mix "C"
Quality Management	QCP
Sublot Size:	1000 Tons
MTD:	Yes

RATE TABLE

THE FOLLOWING RATES OF APPLICATION HAVE BEEN ASSUMED IN CALCULATING PLAN QUANTITIES.

HMA SURFACE 0.056 TONS/(SQYD*IN)
 BITUMINOUS MATERIALS (TACK COAT): 0.05 LBS/SQ FT (MAINLINE)
 AGGREGATE WEDGE SHOULDERS TYPE B 1.6 TONS/CUYD


COMMITMENTS


NONE


INDEX OF SHEETS

- 1 COVER SHEET
- 2 INDEX OF SHEETS, LISTS OF STANDARDS
GENERAL NOTES AND COMMITMENTS
- 3-4 SUMMARY OF QUANTITIES (2)
- 5 SCHEDULE OF QUANTITIES
- 6-9 TYPICAL SECTIONS (4)
- 10-17 PLAN SHEETS (8)
- 18 TRANSITION DETAILS
- 19 BRIDGE PLAN SHEET

**STATE OF ILLINOIS
DEPARTMENT OF TRANSPORTATION
DIVISION OF HIGHWAYS
DISTRICT 6**

EXAMINED November 18, 20 24

 ENGINEER OF OPERATIONS

EXAMINED December 2, 20 24

 ENGINEER OF PROJECT IMPLEMENTATION

EXAMINED December 2, 20 24

 ENGINEER OF PROGRAM DEVELOPMENT

REV - MS

MODEL: 72831 General Notes [Sheet]
FILE NAME: c:\pwworking\ibco\work\1040248\DISTRICT6\72831-shh-gemnotes.dgn

USER NAME = Jonathan.Cox	DESIGNED -	REVISED -
	DRAWN -	REVISED -
	CHECKED -	REVISED -
PLOT DATE = 12/4/2024	DATE -	REVISED -

**STATE OF ILLINOIS
DEPARTMENT OF TRANSPORTATION**

**GENERAL NOTES, HIGHWAY STANDARDS,
INDEX OF SHEETS & COMMITMENTS**

SCALE: SHEET 1 OF 1 SHEETS STA. TO STA.

F.A.P. RTE.	SECTION	COUNTY	TOTAL SHEETS	SHEET NO.
325	114S(RS-4),116(RS-7,BDR)	MACOUPIN	19	2
CONTRACT NO. 72831				
ILLINOIS FED. AID PROJECT				

CODE NO.	ITEM	UNIT	TOTAL QUANTITY	6-01143-0100	
				100% STATE	100% STATE
				ROADWAY 0005 RURAL	BRIDGE 0013 RURAL
40600290	BITUMINOUS MATERIALS (TACK COAT)	POUND	26775	26668	107
40600370	LONGITUDINAL JOINT SEALANT	FOOT	22311	22248	63
40600405	MATERIAL TRANSFER DEVICE	TON	5013	4978	35
40600990	TEMPORARY RAMP	SQ YD	54	54	
40604050	HOT-MIX ASPHALT SURFACE COURSE, IL-9.5, MIX "C", N50	TON	5013	4978	35
44000155	HOT-MIX ASPHALT SURFACE REMOVAL, 1 1/2"	SQ YD	59337	59261	76
48102100	AGGREGATE WEDGE SHOULDER, TYPE B	TON	244	244	
67000400	ENGINEER'S FIELD OFFICE, TYPE A	CAL MO	6	6	
67100100	MOBILIZATION	LSUM	1	1	
70100460	TRAFFIC CONTROL AND PROTECTION, STANDARD 701306	LSUM	1	1	
70300100	SHORT TERM PAVEMENT MARKING	FOOT	4495	4486	9
70300150	SHORT TERM PAVEMENT MARKING REMOVAL	SQ FT	1499	1443	56
* 78009005	MODIFIED URETHANE PAVEMENT MARKING - LINE 5"	FOOT	67130	66839	291
* 78100100	RAISED REFLECTIVE PAVEMENT MARKER	EACH	284	283	1

* SPECIALTY ITEM

MODEL: 72831_S00 [Sheet]
FILE NAME: c:\p\work\pwr\dotco\proj\1040248\ID672831-sht-S00.dgn

USER NAME = Jonathan.Cox	DESIGNED -	REVISED -
	DRAWN -	REVISED -
	CHECKED -	REVISED -
PLOT DATE = 12/4/2024	DATE -	REVISED -

**STATE OF ILLINOIS
DEPARTMENT OF TRANSPORTATION**

SUMMARY OF QUANTITIES

SCALE: SHEET 1 OF 2 SHEETS STA. TO STA.

F.A.P. RTE.	SECTION	COUNTY	TOTAL SHEETS	SHEET NO.
325	114S(RS-4),116(RS-7,BDR)	MACOUPIN	19	3
CONTRACT NO. 72831				
ILLINOIS FED. AID PROJECT				

					40600990
LOCATION		LENGTH	WIDTH	TEMPORARY RAMP	
FAP 325 (IL 16)					
904+00.00	TO	904+05.00	5.00	24	13.3
913+96.80	TO	914+01.80	5.00	24	13.3
SN 059-5015 BRIDGE OMISSION STA 914+01.80 TO STA 915+61.80					
915+61.80	TO	915+66.80	5.00	24	13.3
1128+95.00	TO	1129+00.00	5.00	24	13.3
TOTAL					54

					48102100	X2020110
LOCATION		LENGTH (FOOT)	WIDTH (FOOT)	AGGREGATE WEDGE SHOULDER, TYPE B	GRADING AND SHAPING SHOULDERS	
FAP 325 (IL 16)						
904+00.00	TO	914+01.80	1,001.80	3.00	11.1	20.0
SN 059-5015 BRIDGE OMISSION STA 914+01.80 TO STA 915+61.80						
915+61.80	TO	937+80.90	2,219.10	3.00	24.7	44.4
STA EQ #1 STA 937+80.90 BK= STA 937+88.26 AH						
937+88.26	TO	1049+00.00	11,111.74	3.00	123.5	222.2
STA EQ #2 STA 1049+00.00 BK= STA 1049+22.43 AH						
1049+22.43	TO	1061+45.42	1,222.99	3.00	13.6	24.5
1061+45.42	TO	1061+53.00	7.58	3.00	0.1	0.2
SN 059-0004 STA 1061+53.00 TO 1062+36.50						
1061+36.50	TO	1061+85.42	48.92	3.00	0.5	1.0
1062+27.68	TO	1062+37.68	10.00	3.00	0.1	0.2
1062+37.68	TO	1062+67.68	30.00	3.00	0.3	0.6
1062+67.68	TO	1065+28.00	260.32	3.00	2.9	5.2
STA 1065+28.00 TO STA 1068+22.00 GUTTER AREA						
1068+22.00	TO	1129+00.00	6,078.00	3.00	67.5	121.6
TOTAL					244	440

					70300100	70300150
LOCATION		SIDE	SHORT TERM PAVEMENT MARKING	SHORT TERM PAVEMENT MARKING REM		
FAP 325 (IL 16)						
904+00.00	TO	937+80.90	EB/WB	338	113	
STA EQ #1 STA 937+80.90 BK= STA 937+88.26 AH						
937+88.26	TO	1049+00.00	EB/WB	1111	370	
STA EQ #2 STA 1049+00.00 BK= STA 1049+22.43 AH						
1049+22.43	TO	1129+00.00	EB/WB	798	266	
SUB-TOTAL AFTER MILLING					2247	749
AFTER SURFACE COURSE					2247	749
TOTAL					4495	1499

					40600290	44000155	X4406808	40604050	40600370	40600405
LOCATION		LENGTH (FOOT)	WIDTH (FOOT)	AREA (SQ YD)	BITUMINOUS MATERIALS (TACK COAT)	HMA SURFACE REM 1 1/2"	PCC SURFACE REM 1"	HMA SURFACE COURSE IL 9.5, MIX C, N50	LONGITUDINAL JOINT SEALANT	MATERIAL TRANSFER DEVICE
FAP 325 (IL 16)										
904+00.00	TO	914+01.80	1001.80	24	26/1.47	1202.2	26/1.47	224.4	1001.8	224.4
SN 059-5015 BRIDGE OMISSION STA 914+01.80 TO STA 915+61.80										
915+61.80	TO	937+80.90	2219.10	24	5917.60	2662.9	5917.60	497.1	2219.1	497.1
STA EQ #1 STA 937+80.90 BK= STA 937+88.26 AH										
937+88.26	TO	1049+00.00	11111.74	24	29631.31	13334.1	29631.31	2489.0	11111.7	2489.0
STA EQ #2 STA 1049+00.00 BK= STA 1049+22.43 AH										
1049+22.43	TO	1061+63.50	1241.07	24	3309.52	1489.3	3309.52	278.0	1241.1	278.0
1061+63.50	TO	1061+73.50	10.00	34.00	37.78	17.00	37.78	3.17	10.0	3.17
1061+73.50	TO	1062+16.50	43.00	34.00	200.67	73.10	200.67	28.09	43.0	28.09
1062+16.50	TO	1062+26.50	10.00	34.00	37.78	17.00	37.78	3.17	10.0	3.17
1062+26.50	TO	1065+28.00	301.50	24	804.00	361.8	804.00	67.5	301.5	67.5
1065+28.00	TO	1068+22.00	294.00	22	718.67	323.4	718.67	60.4	294.0	60.4
1068+22.00	TO	1129+00.00	6078.00	24	16208.00	7293.6	16208.00	1361.5	6078.0	1361.5
TOTAL					26775	59337	201	5013	22311	5013

LOCATION		78100100	78300200
		RAISED REFLECTIVE PAVEMENT MARKER (EACH)	RAISED REFLECTIVE PAVEMENT MARKER REM (EACH)
CL 80' SPACING			
FAP 325 (IL 16)			
904+00.00	TO	937+80.90	43
STA EQ #1 STA 937+80.90 BK= STA 937+88.26 AH			
937+88.26	TO	1049+00.00	140
STA EQ #2 STA 1049+00.00 BK= STA 1049+22.43 AH			
1049+22.43	TO	1129+00.00	101
TOTAL		284	284

					78009005			
LOCATION		LENGTH	MODIFIED URETHANE PAVEMENT MARKING LINE-5"					
FAP 325 (IL 16)								
			FOOT	FOOT	FOOT	FOOT		
			WHITE-SOLID EDGE LINES	YELLOW SKIP-DASH	YELLOW SOLID	YELLOW DOUBLE SOLID		
904+00.00	TO	906+00.00	200	400	100	200		
906+00.00	TO	908+50.00	250	500	125			
908+50.00	TO	912+50.00	400	800	200	400		
912+50.00	TO	918+25.00	575	1150			1150	
918+25.00	TO	923+25.00	500	1000	250	500		
923+25.00	TO	927+00.00	375	750			750	
927+00.00	TO	931+00.00	400	800	200	400		
931+00.00	TO	937+80.90	601	1362	340			
STA EQ #1 STA 937+80.90 BK= STA 937+88.26 AH								
937+88.26	TO	963+00.00	2512	5023	1256			
963+00.00	TO	972+00.00	900	1800	450	900		
972+00.00	TO	974+00.00	200	400	100			
974+00.00	TO	982+50.00	850	1700	425	850		
982+50.00	TO	1002+50.00	2000	4000	1000			
1002+50.00	TO	1023+00.00	2050	4100	1025	2050		
1023+00.00	TO	1031+50.00	850	1700	425			
1031+50.00	TO	1049+00.00	1750	3500	875	1750		
STA EQ #2 STA 1049+00.00 BK= STA 1049+22.43 AH								
1049+22.43	TO	1053+25.00	403	805	201	403		
1053+25.00	TO	1062+00.00	875	1750	438			
1062+00.00	TO	1072+00.00	1000	2000	500	1000		
1072+00.00	TO	1073+50.00	150	300			300	
1073+50.00	TO	1082+00.00	850	1700	425	850		
1082+00.00	TO	1129+00.00	4700	9400	2350			
SUB TOTAL			44941	10686	9303	2200		
TOTAL							67130	

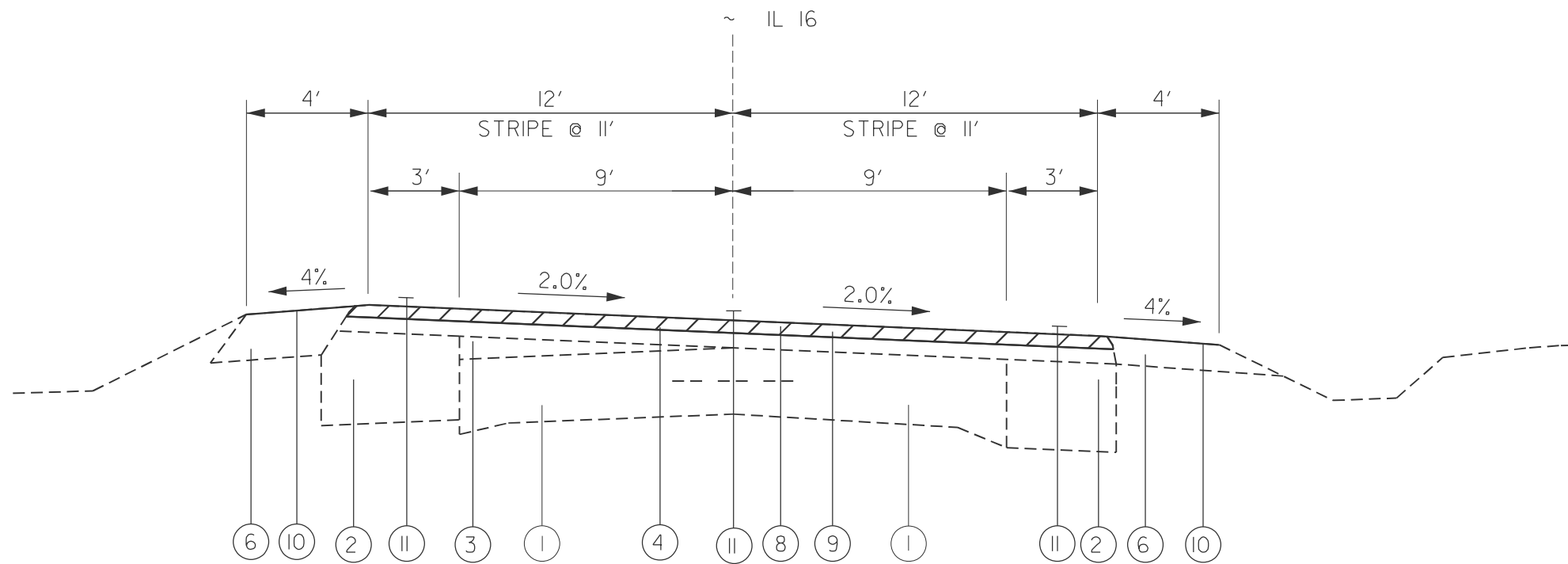
MODEL: 72831 Schedule (Sheet)
FILE NAME: c:\pwworking\autocad\1040248\DWG\72831-sht-schedule.dwg

USER NAME = Jonathan.Cox	DESIGNED -	REVISED -
	DRAWN -	REVISED -
	CHECKED -	REVISED -
PLOT DATE = 12/4/2024	DATE -	REVISED -

**STATE OF ILLINOIS
DEPARTMENT OF TRANSPORTATION**

SCHEDULES			
SCALE:	SHEET 1	OF 1 SHEETS	STA. TO STA.

F.A.P. RTE.	SECTION	COUNTY	TOTAL SHEETS	SHEET NO.
325	114S(RS-4),116(RS-7,BDR)	MACOUPIN	19	5
CONTRACT NO. 72831				
ILLINOIS FED. AID PROJECT				



LEGEND

①	EX. PCC PAVEMENT
②	EX. BASE COURSE WIDENING, 9"
③	EX. LEVELING BINDER
④	EX. BITUMINOUS SURFACE COURSE, 3 1/4"
⑤	EX. BITUMINOUS SHOULDER, 8"
⑥	EX. AGGREGATE SHOULDER, 6"
⑦	EX. GUTTER TYPE A
⑧	PR. HMA SURFACE REMOVAL 1 1/2"
⑨	PR. HMA SURFACE COURSE 1 1/2"
⑩	PR. AGGREGATE SHOULDERS
⑪	PR. PAVEMENT MARKING

TYPICAL SECTION

STA. 904+00 TO STA. 914+01.80
 BRIDGE OMISSION 914+01.80 TO 915+61.80
 STA 915+61.80 TO 919+70.00

MODEL: 72831 Typical Sections (Sheet)
 FILE NAME: c:\p\work\72831\72831-sht-typicals.dgn

USER NAME = Jonathan.Cox	DESIGNED -	REVISED -
	DRAWN -	REVISED -
	CHECKED -	REVISED -
PLOT DATE = 12/4/2024	DATE -	REVISED -

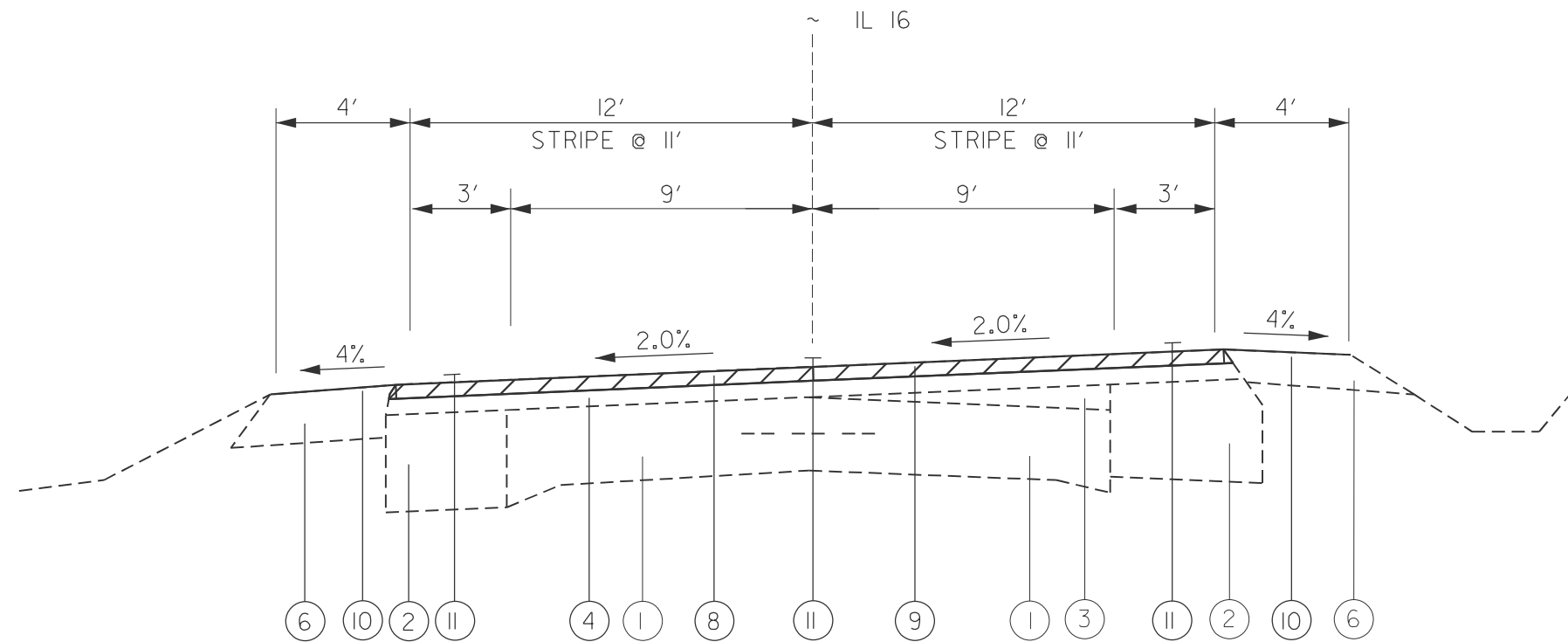
**STATE OF ILLINOIS
 DEPARTMENT OF TRANSPORTATION**

TYPICAL SECTIONS

SCALE: SHEET 1 OF 4 SHEETS STA. TO STA.

F.A.P. RTE.	SECTION	COUNTY	TOTAL SHEETS	SHEET NO.
325	114S(RS-4),116(RS-7,BDR)	MACOUPIN	19	6
CONTRACT NO. 72831				
ILLINOIS FED. AID PROJECT				

LEGEND	
①	EX. PCC PAVEMENT
②	EX. BASE COURSE WIDENING, 9"
③	EX. LEVELING BINDER
④	EX. BITUMINOUS SURFACE COURSE, 3 1/4"
⑤	EX. BITUMINOUS SHOULDER, 8"
⑥	EX. AGGREGATE SHOULDER, 6"
⑦	EX. GUTTER TYPE A
⑧	PR. HMA SURFACE REMOVAL 1 1/2"
⑨	PR. HMA SURFACE COURSE 1 1/2"
⑩	PR. AGGREGATE SHOULDERS
⑪	PR. PAVEMENT MARKING



TYPICAL SECTION - IL 16

STA 919+70 TO STA. 925+85 FULL SUPER
 STA. 925+85 TO STA. 927+35 TRANSITION

MODEL: 72831_Typical Sections-1 [Sheet]
 FILE NAME: c:\p\work\72831\typical\72831-ent\typical.sdm

USER NAME = Jonathan.Cox	DESIGNED -	REVISED -
	DRAWN -	REVISED -
	CHECKED -	REVISED -
PLOT DATE = 12/3/2024	DATE -	REVISED -

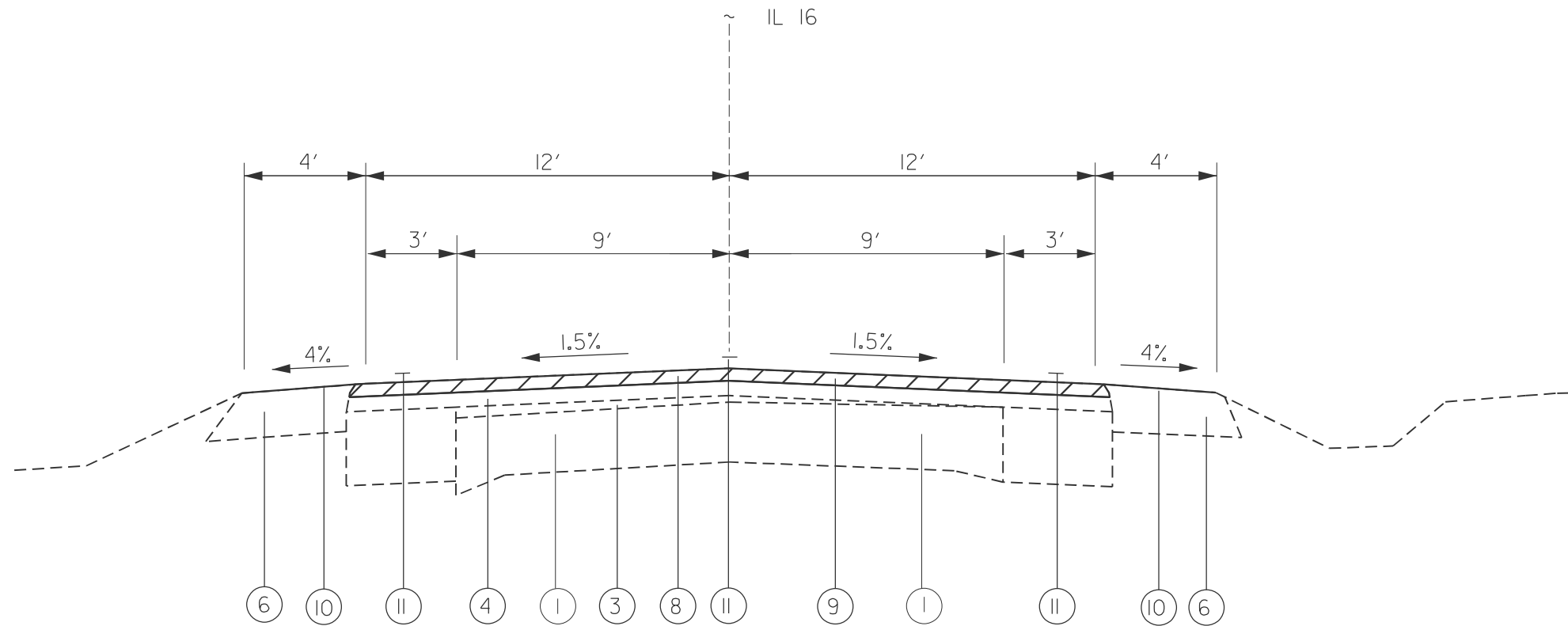
**STATE OF ILLINOIS
 DEPARTMENT OF TRANSPORTATION**

TYPICAL SECTIONS

SCALE: SHEET 2 OF 4 SHEETS STA. TO STA.

F.A.P. RTE.	SECTION	COUNTY	TOTAL SHEETS	SHEET NO.
325	114S(RS-4),116(RS-7,BDR)	MACOUPIN	19	7
CONTRACT NO. 72831				
ILLINOIS FED. AID PROJECT				

LEGEND	
①	EX. PCC PAVEMENT
②	EX. BASE COURSE WIDENING, 9"
③	EX. LEVELING BINDER
④	EX. BITUMINOUS SURFACE COURSE, 3 1/4"
⑤	EX. BITUMINOUS SHOULDER, 8"
⑥	EX. AGGREGATE SHOULDER, 6"
⑦	EX. GUTTER TYPE A
⑧	PR. HMA SURFACE REMOVAL 1 1/2"
⑨	PR. HMA SURFACE COURSE 1 1/2"
⑩	PR. AGGREGATE SHOULDERS
⑪	PR. PAVEMENT MARKING



NOTE:
 PCC SURFACE REM 1" & HMA OVERLAY 2 1/2"
 STA 1061+33.50 TO STA 1062+63.50 1.5" MILL TO 1" MILL & 1.5" SC to 2.5" SC
 STA.1061+63.50 TO STA 1062+26.50 FULL 1" MILL & 2.5" SC
 STA 1062+26.50 TO STA 1062+56.50 1" MILL TO 1.5" MILL & 2.5" SC to 1.5" SC
 (SEE SHEET 18 FOR TRANSITION DETAILS)

PROPOSED TYPICAL SECTION - IL 16
 STA. 927+35 TO STA. 937+80.90
 STA. EQN. STA. 937+80.90 BK = STA. 931+88.26 AH
 STA. 931+88.26 TO STA. 1049+00
 STA. EQN. STA. 1049+00.00 BK = STA. 1049+22.43 AH
 STA. 1049+22.43 TO 1061+75.42
 BRIDGE OVERLAY STA. 1061+75.42 TO STA. 1062+37.68
 STA. 1062+37.68 TO STA. 1065+28
 STA. 1068+22 TO STA. 1129+00

MODEL: 72831_Typical Sections-2 (Sheet)
 FILE NAME: c:\p\work\72831\72831-sht-typicals.dgn

USER NAME = Jonathan.Cox	DESIGNED -	REVISED -
	DRAWN -	REVISED -
	CHECKED -	REVISED -
PLOT DATE = 12/4/2024	DATE -	REVISED -

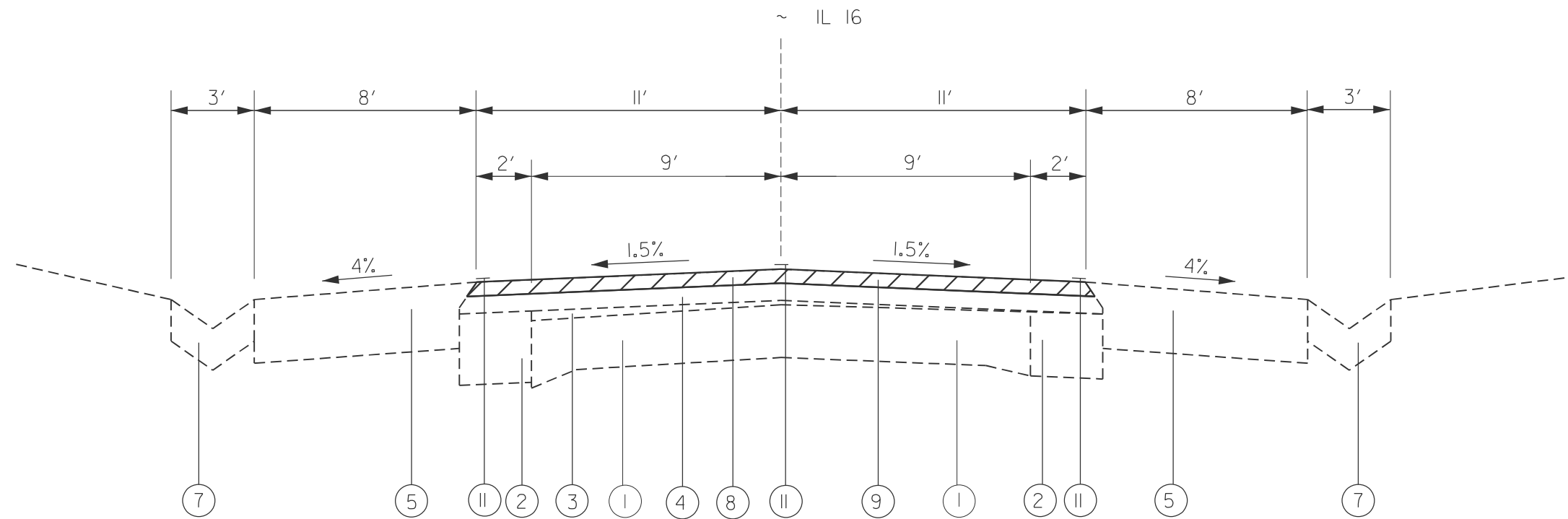
**STATE OF ILLINOIS
 DEPARTMENT OF TRANSPORTATION**

TYPICAL SECTIONS

SCALE: SHEET 3 OF 4 SHEETS STA. TO STA.

F.A.P. RTE.	SECTION	COUNTY	TOTAL SHEETS	SHEET NO.
325	114S(RS-4),116(RS-7,BDR)	MACOUPIN	19	8
CONTRACT NO. 72831				
ILLINOIS FED. AID PROJECT				

LEGEND	
①	EX. PCC PAVEMENT
②	EX. BASE COURSE WIDENING, 9"
③	EX. LEVELING BINDER
④	EX. BITUMINOUS SURFACE COURSE, 3 1/4"
⑤	EX. BITUMINOUS SHOULDER, 8"
⑥	EX. AGGREGATE SHOULDER, 6"
⑦	EX. GUTTER TYPE A
⑧	PR. HMA SURFACE REMOVAL 1 1/2"
⑨	PR. HMA SURFACE COURSE 1 1/2"
⑩	PR. AGGREGATE SHOULDERS
⑪	PR. PAVEMENT MARKING



PROPOSED TYPICAL SECTION - IL 16
 STA. 1065+28 TO STA. 1068+22

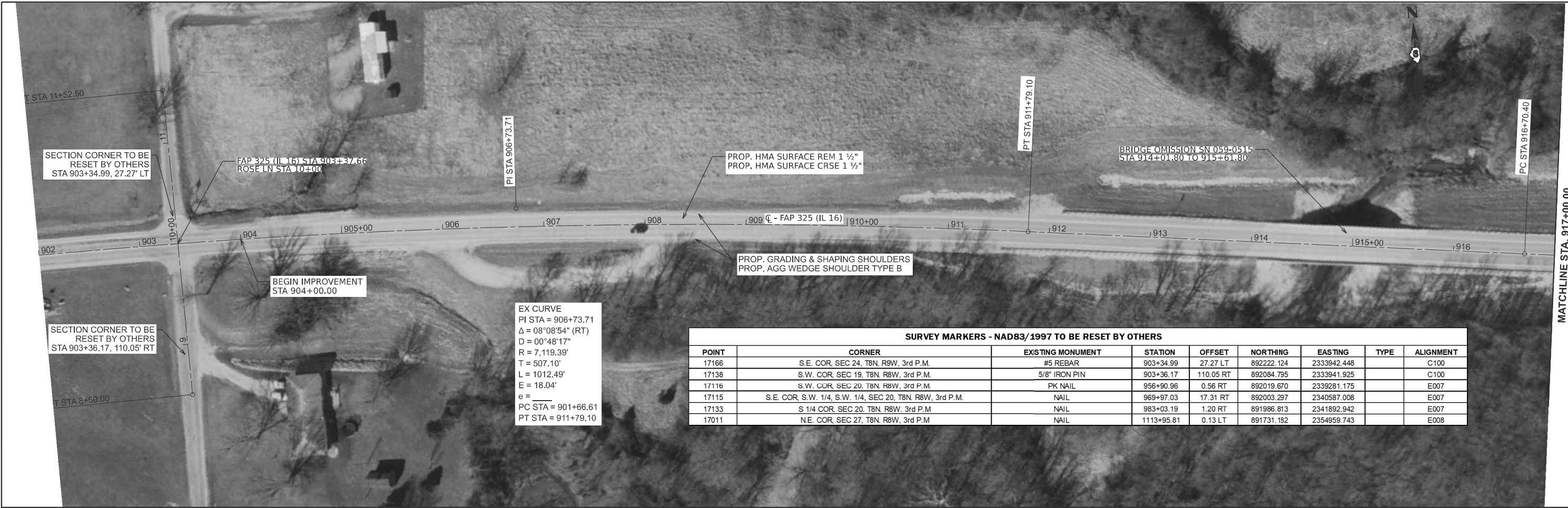
MODEL: 72831_Typical Sections-3 [Sheet]
 FILE NAME: c:\p\work\72831\Jonathan.Cox\1040248\1040248.D672831-ent\typicals.dgn

USER NAME = Jonathan.Cox	DESIGNED -	REVISED -
	DRAWN -	REVISED -
	CHECKED -	REVISED -
PLOT DATE = 12/4/2024	DATE -	REVISED -

**STATE OF ILLINOIS
 DEPARTMENT OF TRANSPORTATION**

TYPICAL SECTIONS			
SCALE:	SHEET 4	OF 4 SHEETS	STA. TO STA.

F.A.P. RTE.	SECTION	COUNTY	TOTAL SHEETS	SHEET NO.
325	114S(RS-4),116(RS-7,BDR)	MACOUPIN	19	9
CONTRACT NO. 72831				
ILLINOIS FED. AID PROJECT				



SURVEY MARKERS - NAD83/1997 TO BE RESET BY OTHERS

POINT	CORNER	EXISTING MONUMENT	STATION	OFFSET	NORTHING	EASTING	TYPE	ALIGNMENT
17166	S.E. COR. SEC 24, T8N, R9W, 3rd P.M.	#5 REBAR	903+34.99	27.27 LT	892222.124	2333942.448		C100
17138	S.W. COR. SEC 19, T8N, R8W, 3rd P.M.	5/8" IRON PIN	903+36.17	110.05 RT	892084.795	2333941.925		C100
17116	S.W. COR. SEC 20, T8N, R8W, 3rd P.M.	PK NAIL	956+90.96	0.56 RT	892019.670	2339261.175		E007
17115	S.E. COR. S.W. 1/4, S.W. 1/4, SEC 20, T8N, R8W, 3rd P.M.	NAIL	969+97.03	17.31 RT	892003.297	2340587.008		E007
17133	S 1/4 COR. SEC 20, T8N, R8W, 3rd P.M.	NAIL	983+03.19	1.20 RT	891986.813	2341892.942		E007
17011	N.E. COR. SEC 27, T8N, R8W, 3rd P.M.	NAIL	1113+95.81	0.13 LT	891731.182	2354959.743		E008



MODEL: IL16E - 72831 Plan Sheets (Sheet)
FILE NAME: c:\p\work\w10100248\672831-sht-plan.dgn

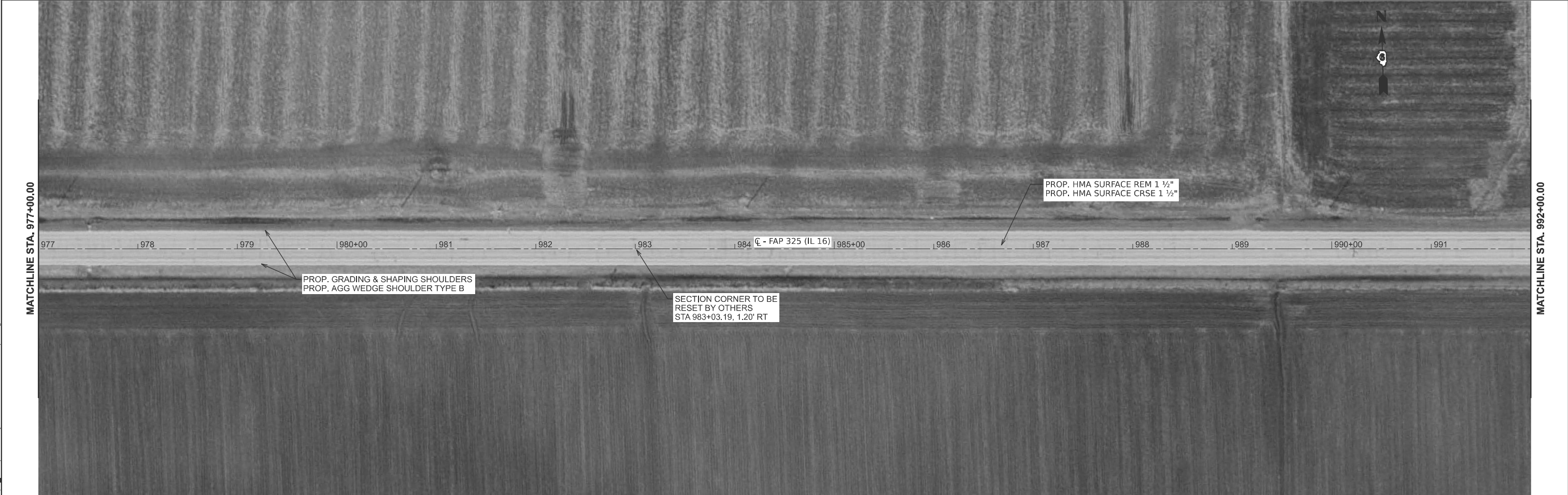
USER NAME = Jonathan.Cox	DESIGNED -	REVISED -
	DRAWN -	REVISED -
	CHECKED -	REVISED -
PLOT DATE = 12/9/2024	DATE -	REVISED -

**STATE OF ILLINOIS
DEPARTMENT OF TRANSPORTATION**

PLAN SHEETS

SCALE: 1"=50' SHEET 1 OF 8 SHEETS STA. 902+00.00 TO STA. 932+00.00

F.A.P. RTE.	SECTION	COUNTY	TOTAL SHEETS	SHEET NO.
325	114S(RS-4),116(RS-7,BDR)	MACOUPIN	19	10
CONTRACT NO. 72831				
ILLINOIS FED. AID PROJECT				



MODEL: IL16E - 72831 Plan Sheets-4 | Sheet1
 FILE NAME: c:\p\work\72831\cpx\72831\1040248\ID672831-sht-plan.dgn

USER NAME = Jonathan.Cox	DESIGNED -	REVISED -
	DRAWN -	REVISED -
	CHECKED -	REVISED -
PLOT DATE = 12/4/2024	DATE -	REVISED -

**STATE OF ILLINOIS
 DEPARTMENT OF TRANSPORTATION**

PLAN SHEETS

SCALE: 1"=50' SHEET 3 OF 8 SHEETS STA. 962+00.00 TO STA. 992+00.00

F.A.P RTE.	SECTION	COUNTY	TOTAL SHEETS	SHEET NO.
325	114S(RS-4),116(RS-7,BDR)	MACOUPIN	19	12
CONTRACT NO. 72831				
ILLINOIS FED. AID PROJECT				

MODEL: IL16E - 72831 Plan Sheets-6 (Sheet)
 FILE NAME: c:\p\work\w10100248\ID672831-sht-plan.dgn

MATCHLINE STA. 992+00.00

MATCHLINE STA. 1007+00.00

MATCHLINE STA. 1007+00.00

MATCHLINE STA. 1022+00.00



USER NAME = Jonathan.Cox	DESIGNED -	REVISED -
	DRAWN -	REVISED -
	CHECKED -	REVISED -
PLOT DATE = 12/4/2024	DATE -	REVISED -

**STATE OF ILLINOIS
 DEPARTMENT OF TRANSPORTATION**

PLAN SHEETS

SCALE: 1"=50' SHEET 4 OF 8 SHEETS STA. 992+00.00 TO STA. 1022+00.00

F.A.P. RTE.	SECTION	COUNTY	TOTAL SHEETS	SHEET NO.
325	114S(RS-4),116(RS-7,BDR)	MACOUPIN	19	13
CONTRACT NO. 72831				
ILLINOIS FED. AID PROJECT				

MODEL: IL16E - 72831 Plan Sheets-6 (Sheet)
 FILE NAME: c:\p\work\72831\1040248\1040248.D672831-sht-plan.dgn

MATCHLINE STA. 1022+00.00

MATCHLINE STA. 1037+00.00

MATCHLINE STA. 1037+00.00

MATCHLINE STA. 1052+00.00



USER NAME = Jonathan.Cox	DESIGNED -	REVISED -
	DRAWN -	REVISED -
	CHECKED -	REVISED -
PLOT DATE = 12/4/2024	DATE -	REVISED -

**STATE OF ILLINOIS
 DEPARTMENT OF TRANSPORTATION**

PLAN SHEETS

SCALE: 1"=50' SHEET 5 OF 8 SHEETS STA. 1022+00.00 TO STA. 1052+00.00

F.A.P. RTE.	SECTION	COUNTY	TOTAL SHEETS	SHEET NO.
325	114S(RS-4),116(RS-7,BDR)	MACOUPIN	19	14
CONTRACT NO. 72831				
ILLINOIS FED. AID PROJECT				

MATCHLINE STA. 1082+00.00

MATCHLINE STA. 1097+00.00

MATCHLINE STA. 1097+00.00

MATCHLINE STA. 1112+00.00



MODEL: IL10E - 72831 Plan Sheets-12 (Sheet)
 FILE NAME: c:\p\work\72831\plan\1082+00.dwg

USER NAME = Jonathan.Cox	DESIGNED -	REVISED -
	DRAWN -	REVISED -
	CHECKED -	REVISED -
PLOT DATE = 12/5/2024	DATE -	REVISED -

**STATE OF ILLINOIS
DEPARTMENT OF TRANSPORTATION**

PLAN SHEETS	
SCALE: 1"=50'	SHEET 7 OF 8 SHEETS
STA. 1082+00.00	TO STA. 1112+00.00

F.A.P RTE.	SECTION	COUNTY	TOTAL SHEETS	SHEET NO.
325	114S(RS-4),116(RS-7,BDR)	MACOUPIN	19	16
CONTRACT NO. 72831				
ILLINOIS FED. AID PROJECT				



MODEL: IL 16E - 72831 Plan Sheets-14 (Sheet)
 FILE NAME: c:\p\work\72831\plan\14\140248\140248.DWG\2831-sht-plan.dgn

USER NAME = Jonathan.Cox	DESIGNED -	REVISED -
	DRAWN -	REVISED -
	CHECKED -	REVISED -
PLOT DATE = 12/5/2024	DATE -	REVISED -

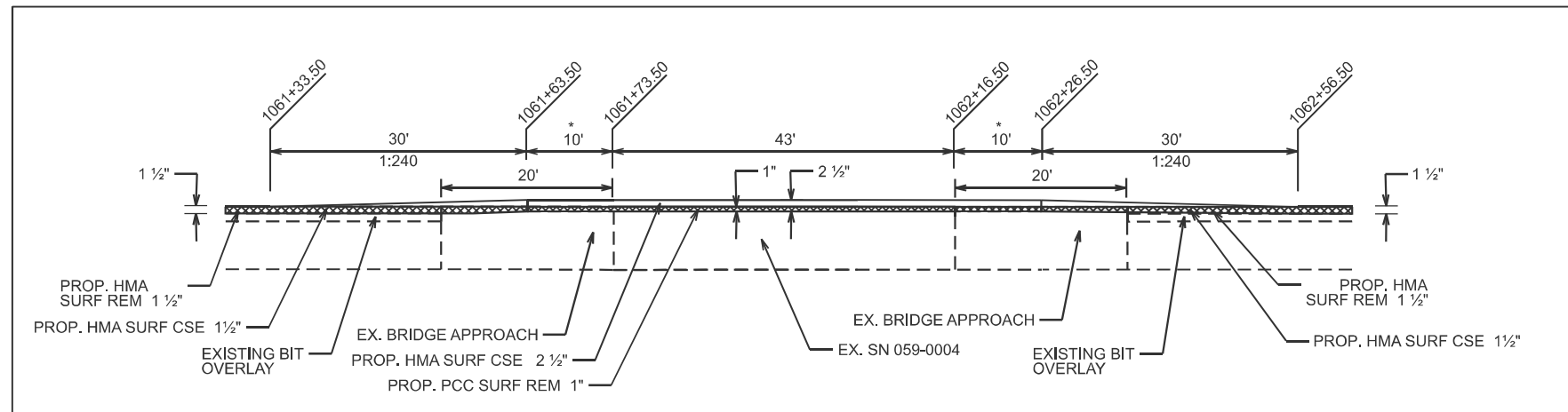
**STATE OF ILLINOIS
 DEPARTMENT OF TRANSPORTATION**

PLAN SHEETS

SCALE: 1"=50' SHEET 8 OF 8 SHEETS STA. 1112+00.00 TO STA. 1142+00.00

F.A.P. RTE.	SECTION	COUNTY	TOTAL SHEETS	SHEET NO.
325	114S(RS-4),116(RS-7,BDR)	MACOUPIN	19	17
CONTRACT NO. 72831				
ILLINOIS FED. AID PROJECT				

FAP 325 (IL 16)
MAINLINE TO BRIDGE TRANSITION DETAIL



* THE 10' OF 1" MILLING INTO THE BRIDGE APPROACH WILL BE PAID FOR AS HMA SURFACE REM 1 1/2".

MODEL: Transition Detail Sheet (Sheet)
FILE NAME: c:\p\work\pavistolanandrew\cslar@illinois.gov\1040248\0672831-shr-detail.dgn

USER NAME = bradley.loveless	DESIGNED -	REVISED -
	DRAWN -	REVISED -
	CHECKED -	REVISED -
PLOT DATE = 10/3/2024	DATE -	REVISED -

STATE OF ILLINOIS
DEPARTMENT OF TRANSPORTATION

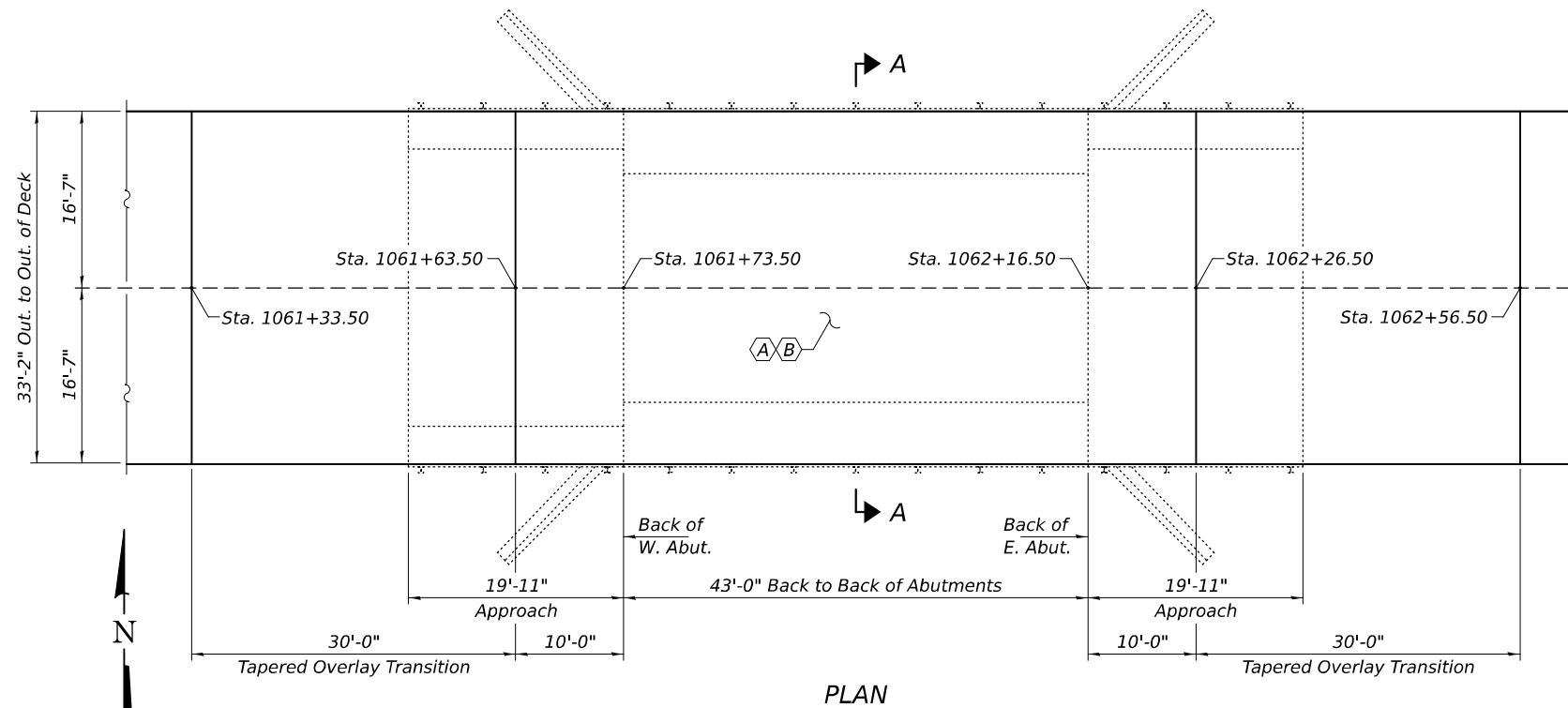
TRANSITION DETAIL SHEET

SCALE: SHEET 1 OF 1 SHEETS STA. TO STA.

F.A.P. RTE.	SECTION	COUNTY	TOTAL SHEETS	SHEET NO.
325	114S(RS-4),116(RS-7,BDR)	MACOUPIN	19	18
CONTRACT NO. 72831				
ILLINOIS FED. AID PROJECT				

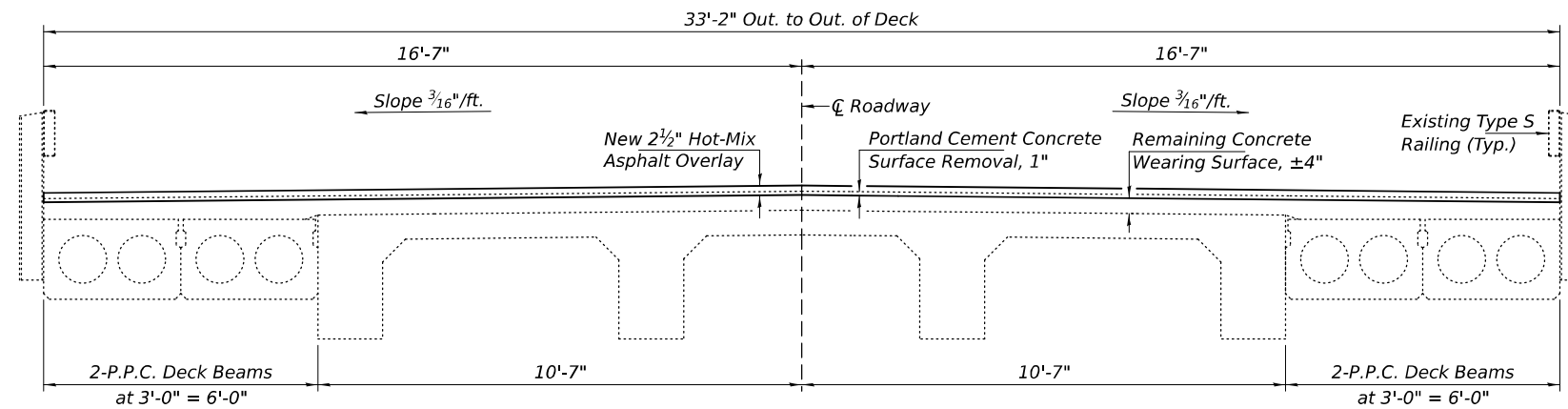
GENERAL NOTES

Plan dimensions and details relative to the existing structure have been taken from existing plans and are subject to nominal construction variations. The Contractor shall field verify existing dimensions and details affecting new construction and make necessary approved adjustments prior to construction or ordering of materials. Such variations shall not be cause for additional compensation for a change in scope of the work, however, the Contractor will be paid for the quantity actually furnished at the unit price bid for the work.



PLAN

- (A) - Portland Cement Concrete Surface Removal, 1"
- (B) - Install new 2½" Hot-Mix Asphalt Overlay.



SECTION A-A

TOTAL BILL OF MATERIAL

ITEM	UNIT	QUANTITY
Hot-Mix Asphalt Surface Course, IL-9.5, Mix "C", N50	Ton	35
Portland Cement Concrete Surface Removal, 1"	Sq. Yd.	201



EXPIRES 11-30-2026

MODEL: 72831-019
FILE NAME: p:\i\del-pw\benley.com\FWIDOT\Documents\OBM Projects\5590004\CADData\Structures\0590004.dgn

DESIGNED - Jeffrey S. Burke	EXAMINED - <i>Jayme F. Schreff</i>	DATE - JANUARY 17, 2025
CHECKED - Chi-Cheung Chau	PASSED - <i>Jayme F. Schreff</i>	REVISIONS -
DRAWN - STEFFEN	ENGINEER OF STRUCTURAL SERVICES	REVISIONS -
CHECKED - JSB CCC	ENGINEER OF BRIDGES AND STRUCTURES	

**STATE OF ILLINOIS
DEPARTMENT OF TRANSPORTATION**

**GENERAL PLAN AND OVERLAY DETAILS
ILLINOIS ROUTE 16 OVER COOP BRANCH EAST
SN 059-0004**

F.A.P. RTE.	SECTION	COUNTY	TOTAL SHEETS	SHEET NO.
325	114S(RS-4),116(RS-7,BDR)	MACOUPIN	19	19
CONTRACT NO. 72831				
ILLINOIS FED. AID PROJECT				

SHEET 1 OF 1 SHEETS