

INDEX to SHEETS

Sheet	No.1	Title Sheet
"	2	Plan and Profile Sta 90+00 To Sta 120+00
"	3	" " " " 120+00 to " 210+00
"	4	" " " " 210+00 to " 270+00
"	5	" " " " 270+00 to " 420+00
"	6&7	Special Bridge Design Sta 109+00 (Sheets 1&2 of 2 Sheets)
"	8&9	" " " " 197+34 (" 1&2 " 2 ")
"	10-11-12	" " " " 267+17 (" 1&3 " 3 ")
"	13	" " " " 414+04

STATE OF ILLINOIS DEPARTMENT OF PUBLIC WORKS AND BUILDINGS DIVISION OF HIGHWAYS PLANS FOR PROPOSED FEDERAL AID HIGHWAY

PLAN	1 INCH	100 FT.
PROFILE, HOR.	1 INCH	100 FT.
PROFILE, VERT.	1 INCH	10 FT.
CROSS-SECTIONS	1 INCH	5 FT.

F.A. Rt. 36, SEC. 42 B, ADAMS CO.

REGULAR FEDERAL AID PROJECT 108-E

FED. AID ROUTE NO.	SEC.	COUNTY	TOTAL SHEETS	SHEET NO.
33	42 B	Adams	13	1

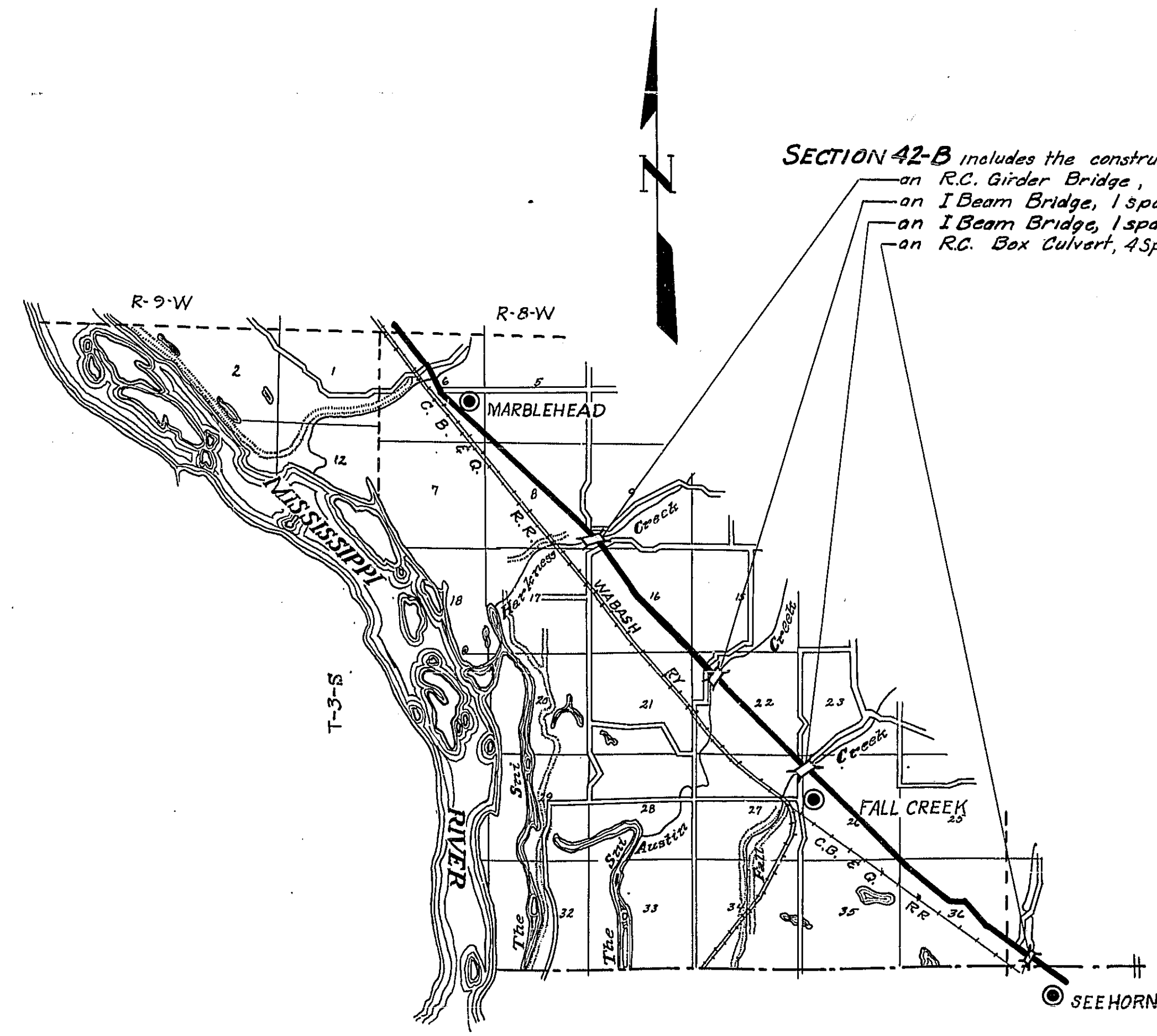
FED. ROAD DIST. NO. 7 ILLINOIS FED. AID PROJECT 108-E



LOCATION OF SECTION INDICATED THIS: —

SUMMARY of QUANTITIES

SEC 42-B		
4117	Cu. Yds.	Channel Excavation
431	Sq. Yds.	Slope Wall
11.5	Cu. Yds.	Handrail Concrete
728.1	Cu. Yds.	Class A Concrete
117,430	Lbs.	Reinforcement Bars
14,5470	Lbs.	Structural Steel
3,800	Lin. Ft.	Furnishing Untreated Piles up to 30 ft. long
658	Lin. Ft.	Furnishing Precast Concrete Piles
3,800	Lin. Ft.	Driving Timber Piles 20 ft. long
250	Lin. Ft.	Driving Precast Concrete Piles 25 ft. long
408	Lin. Ft.	Driving Precast Concrete Piles 34 ft. long
4	Each	Floor Drains
3	Each	Removal of Existing Structures
3	Each	Test Piles (Timber)
2	Each	Test Piles (Precast Concrete)
1331	Bbls	Portland Cement



SECTION 42-B includes the construction of
 an R.C. Girder Bridge, 1 span at 30 ft. at Sta 109+00
 an I Beam Bridge, 1 span at 60 ft. at Sta 197+34
 an I Beam Bridge, 1 span at 30 ft. at Sta 267+17
 an R.C. Box Culvert, 4 spans at 12 ft x 7 ft at Sta 414+04

LAYOUT
Approximate Scale 1 inch = 1 mile

STATE OF ILLINOIS
DEPARTMENT OF PUBLIC WORKS AND BUILDINGS
DIVISION OF HIGHWAYS

SUBMITTED: June 6, 1922

EXAMINED: *C.M. Slaymaker* DISTRICT ENGINEER

PASSED: *[Signature]* ROAD ENGINEER

APPROVED: *[Signature]* ENGINEER OF DESIGN

APPROVED: *[Signature]* ASSISTANT SUPERVISOR OF HIGHWAYS

APPROVED: *[Signature]* DIRECTOR

RECOMMENDED FOR APPROVAL

[Signature]

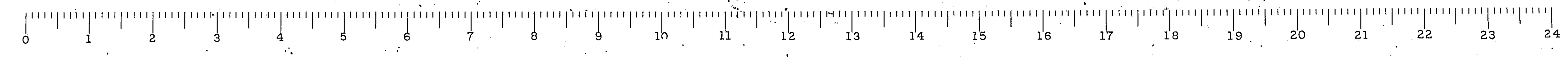
DISTRICT ENGINEER
PUBLIC ROAD ADMINISTRATION
FEDERAL WORKS AGENCY

APPROVED

[Signature]

COMMISSIONER
PUBLIC ROAD ADMINISTRATION
FEDERAL WORKS AGENCY

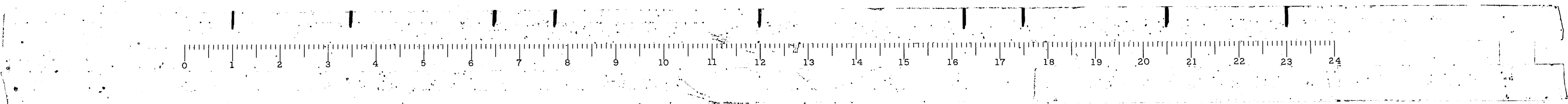
ADAMS COUNTY SECTION 42 B FA ROUTE 36



GTF 6-21-22

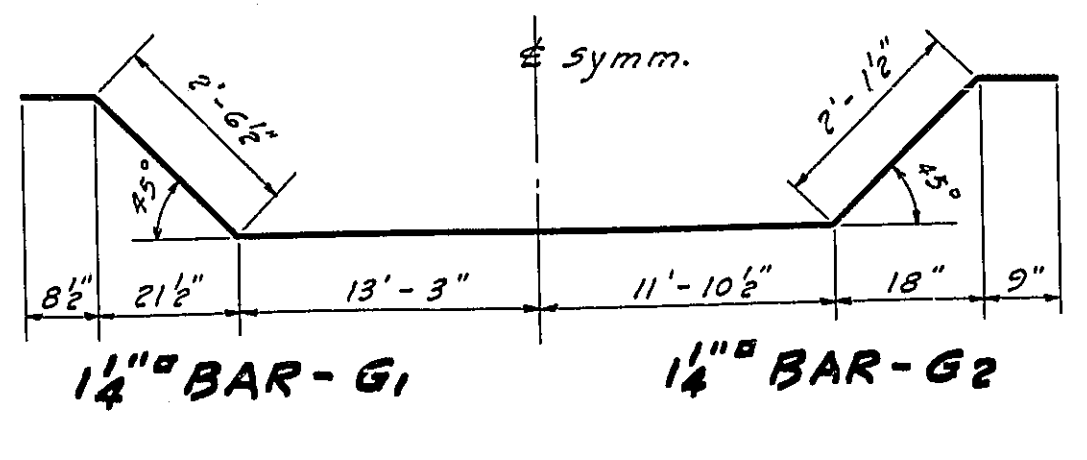
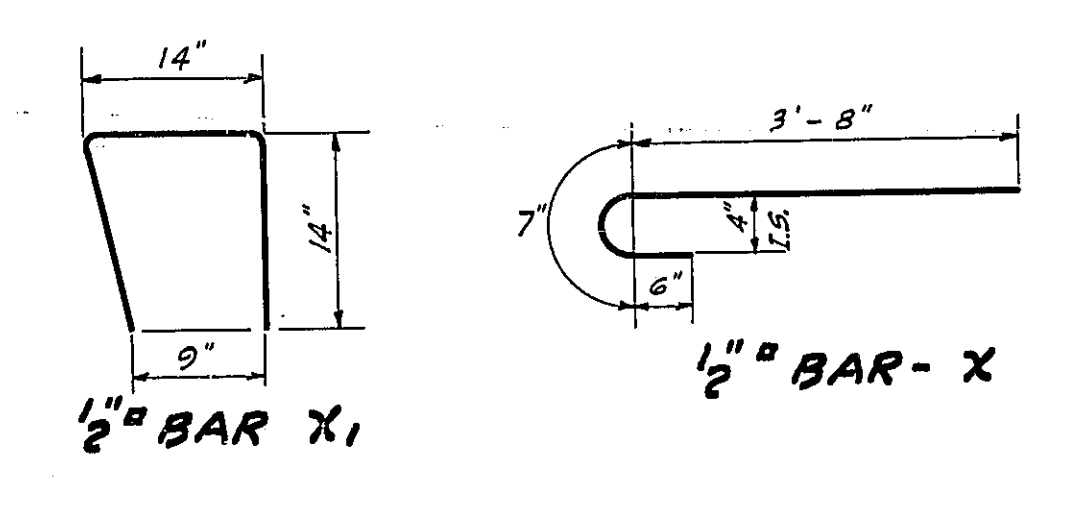
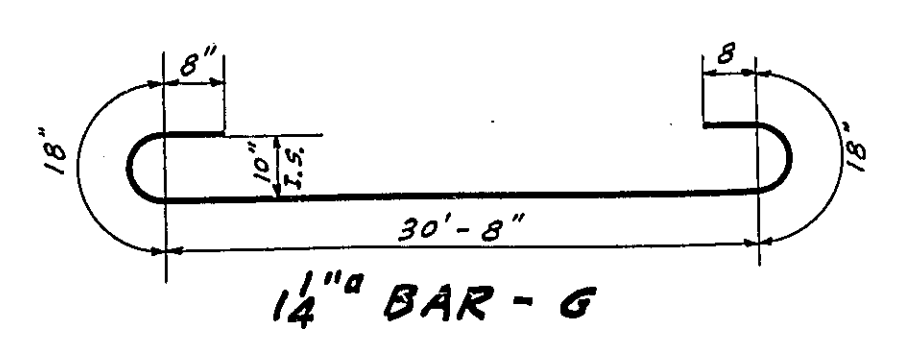
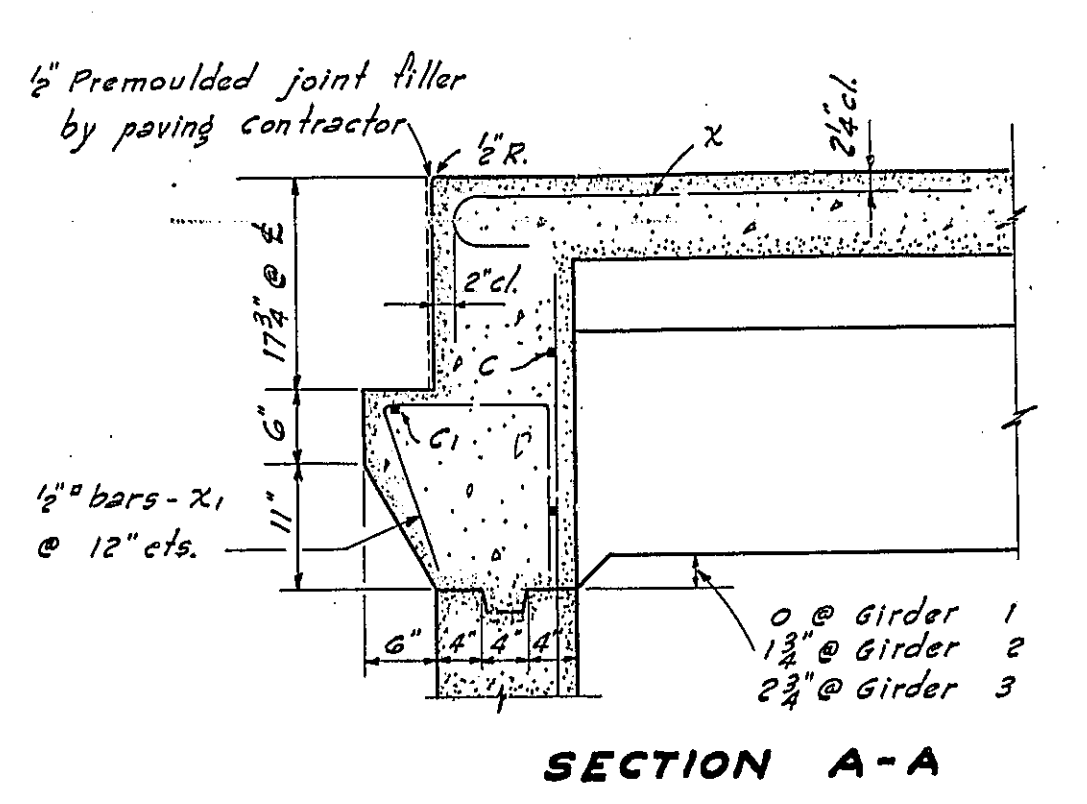
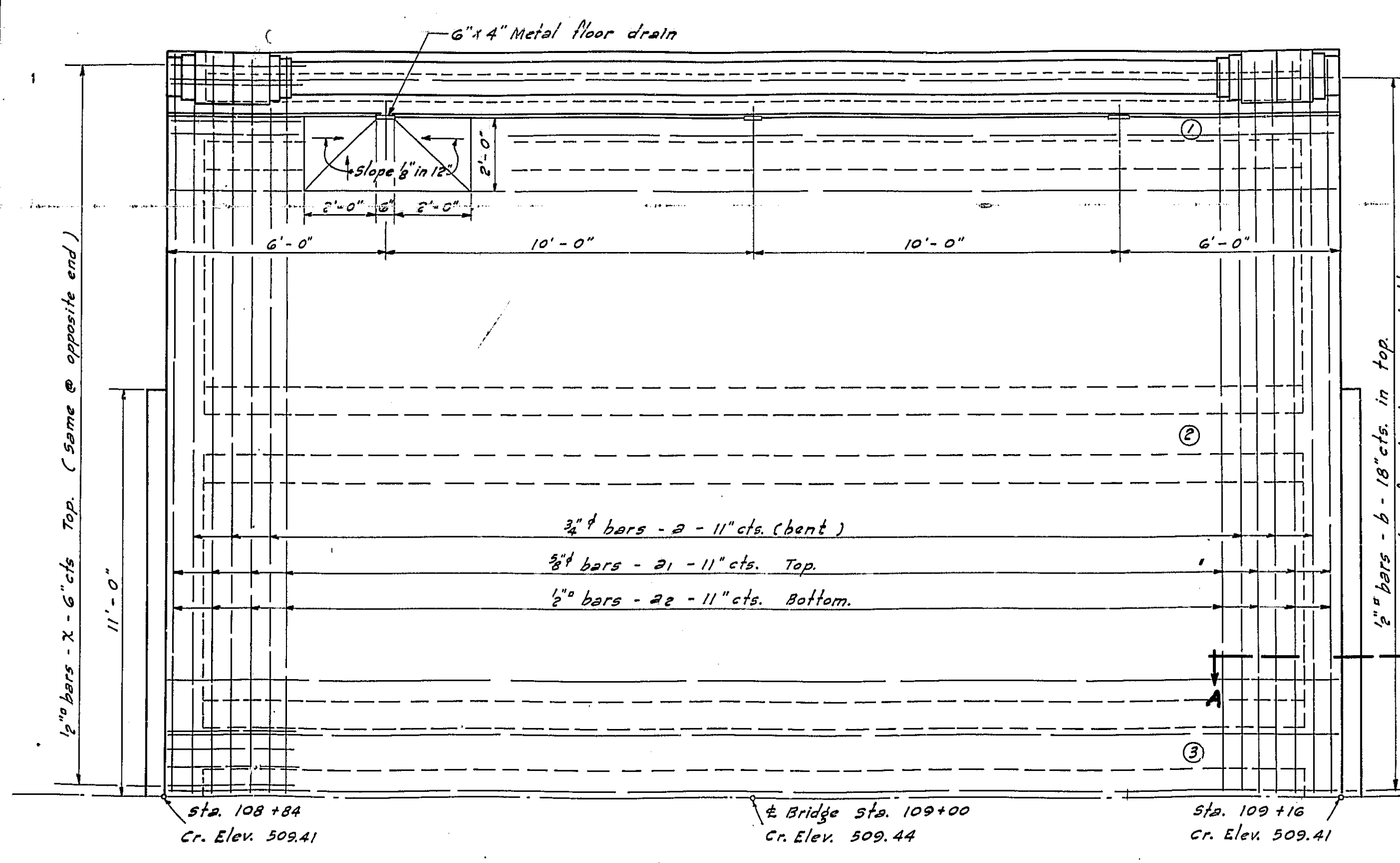
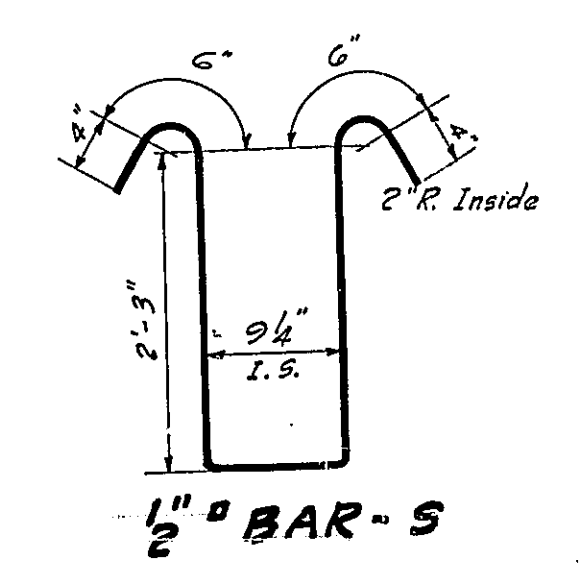
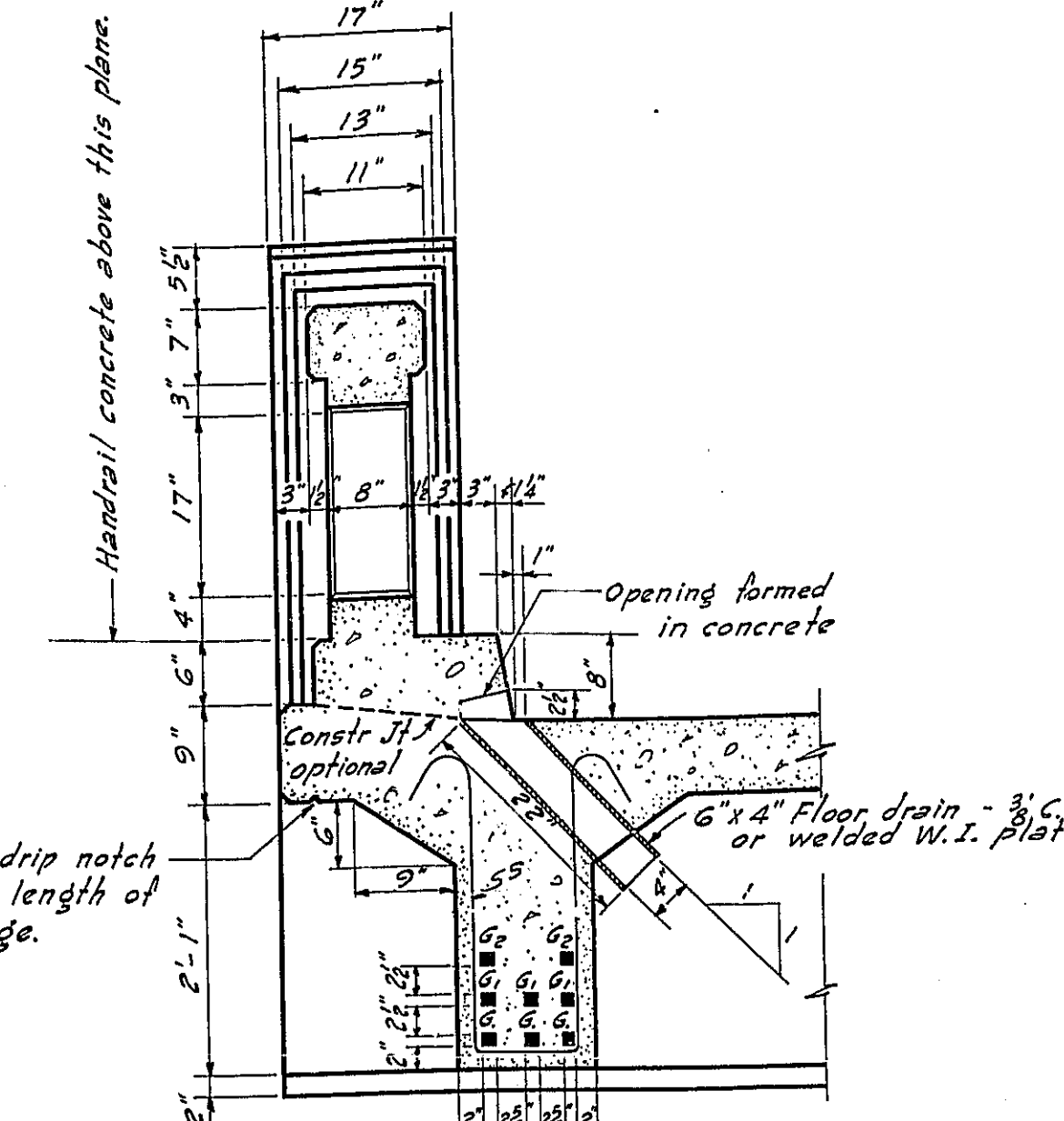
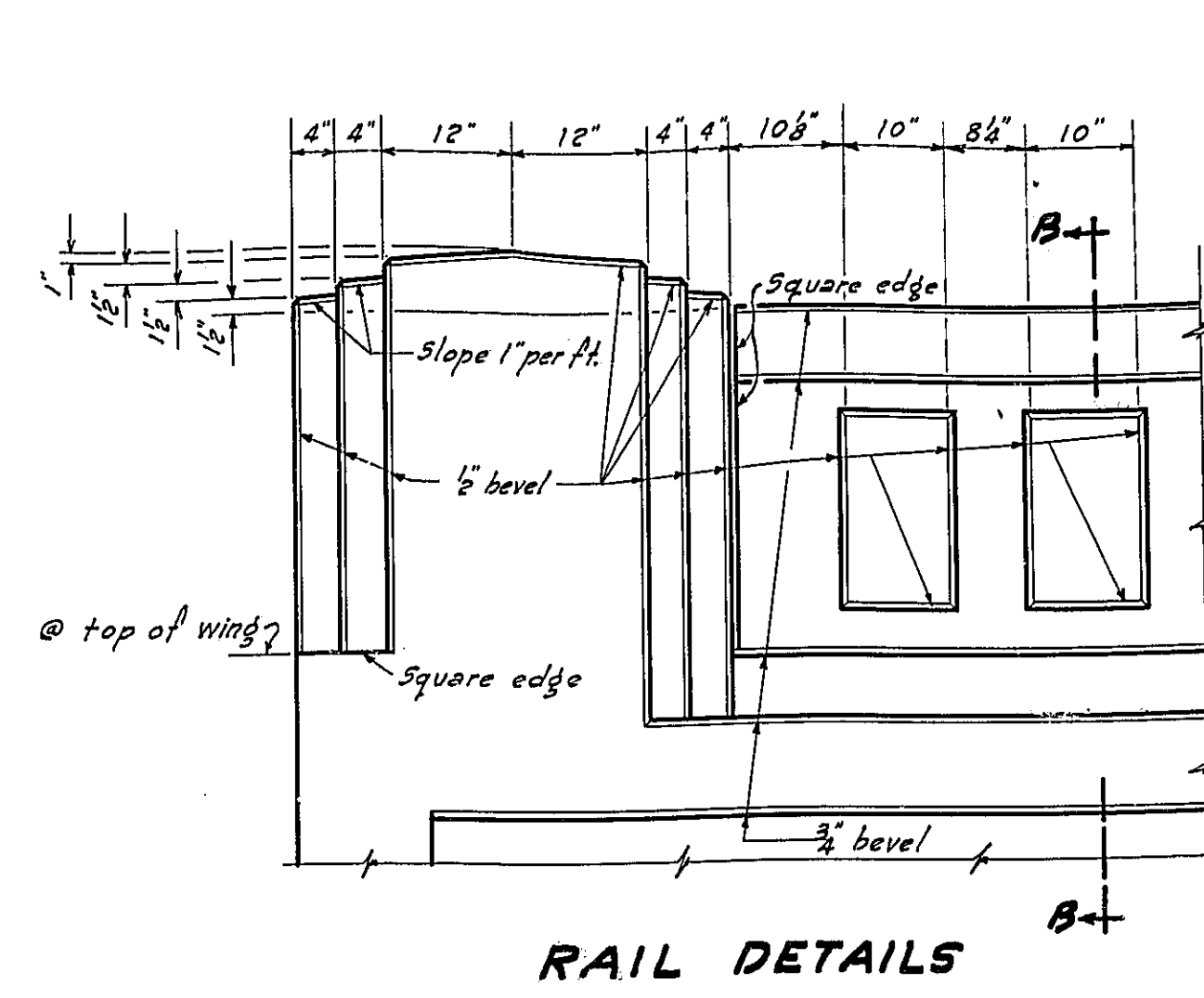
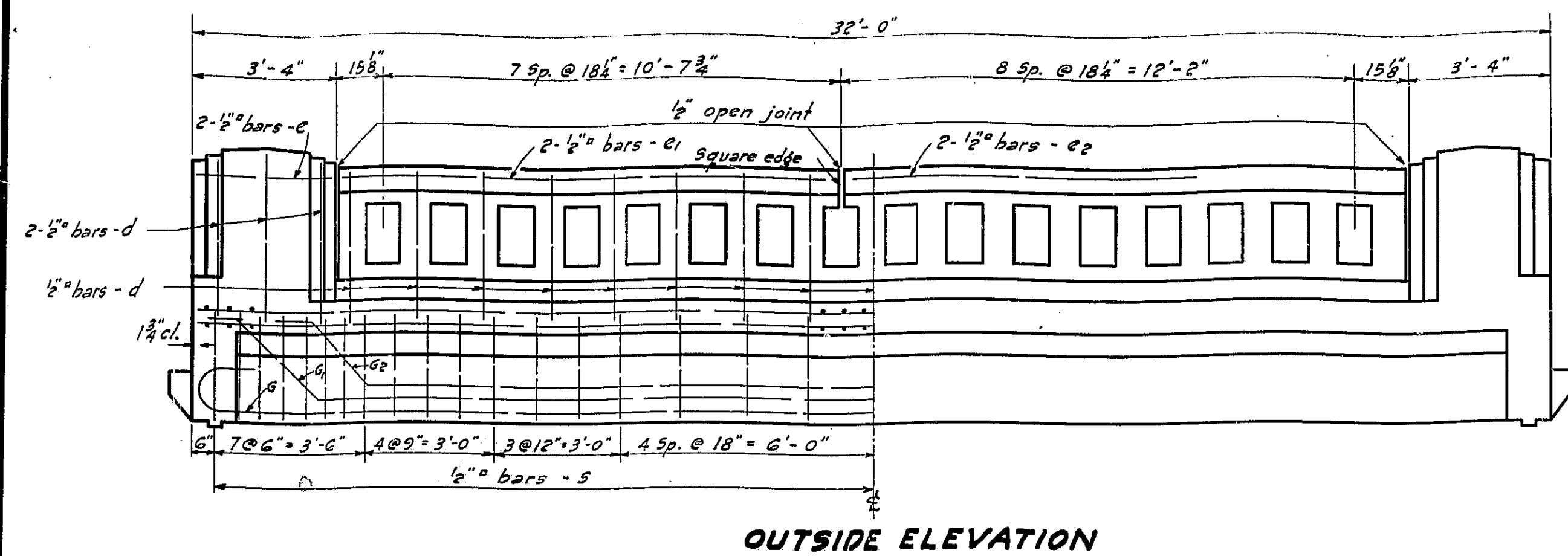
FOR
SHEET(S) 2 THRU 5

SEE
F.A. ROUTE 36
SECTION 42A
Adams COUNTY



STATE OF ILLINOIS
DEPARTMENT OF PUBLIC WORKS & BUILDINGS
DIVISION OF HIGHWAYS

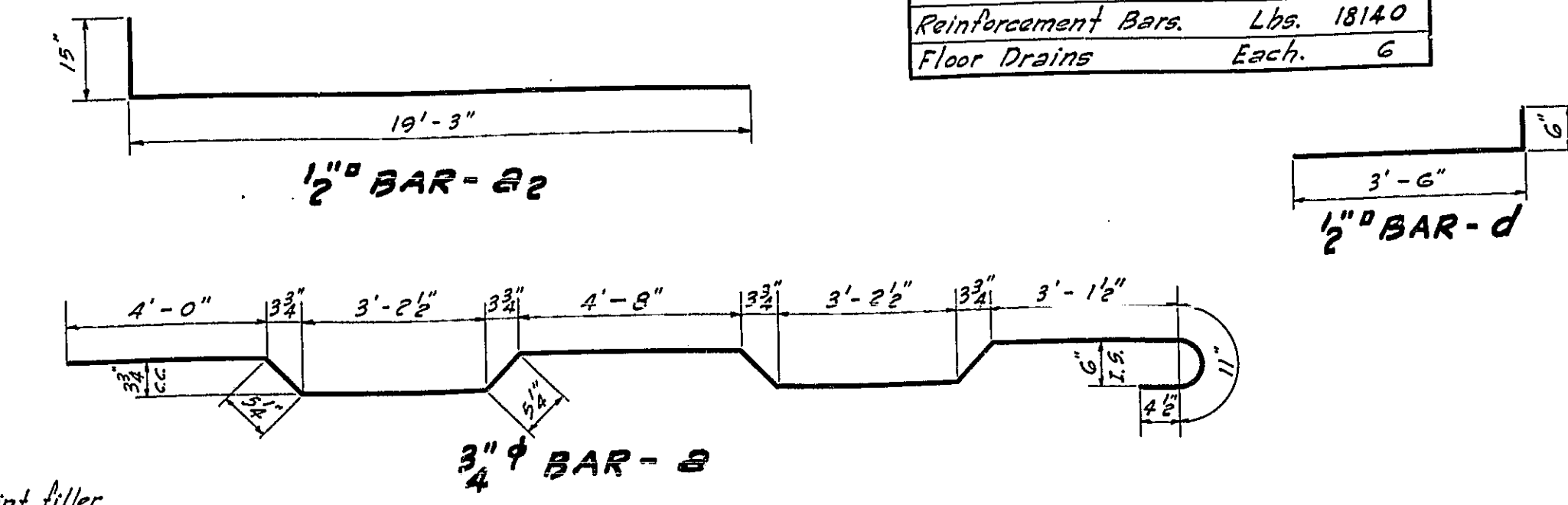
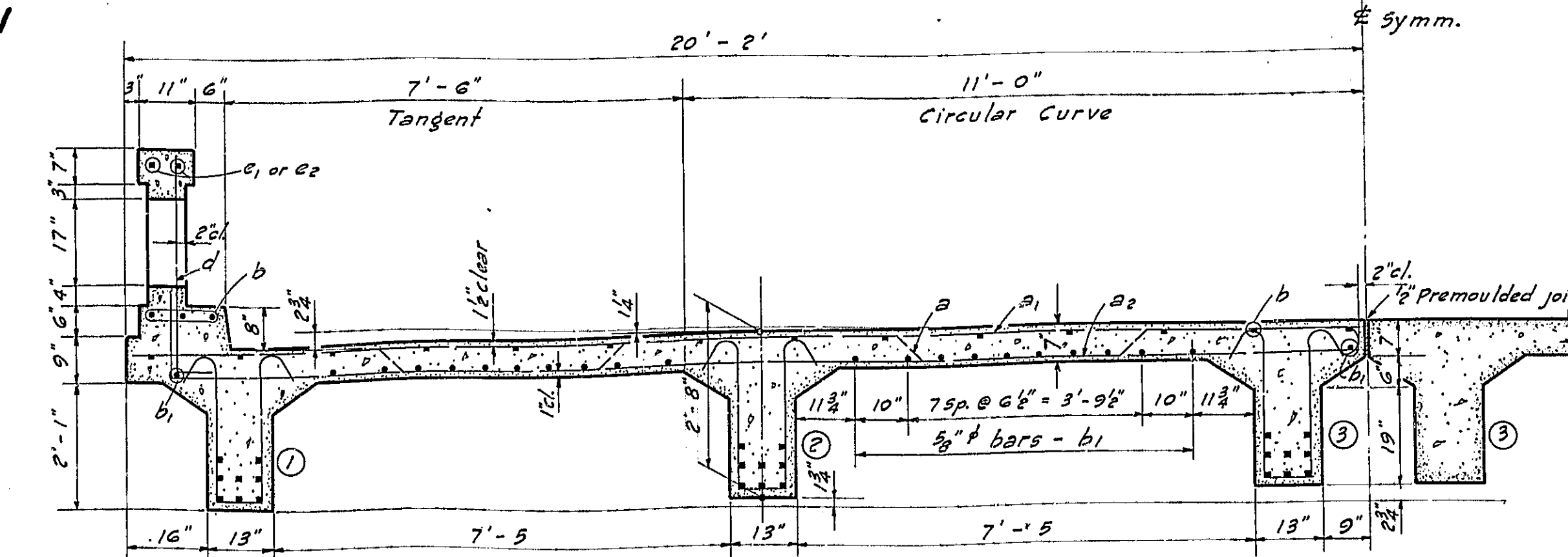
PROJECT NO.	SECTION	COUNTY	TOTAL SHEETS	SHEET NO.	SHEET NO.
FA 36	42-B	Adams	13	6	2 SHEETS
FED. ROAD DIST. NO. 7		ILLINOIS	FED. AID PROJECT - 108-E		



BILL OF MATERIAL

BAR	NO.	SIZE	LENGTH
a	68	3/4"	21'-3"
a ₁	70	3/4"	19'-9"
a ₂	70	3/4"	20'-0"
b	34	1/2"	31'-0"
b ₁	24	3/4"	31'-0"
c	8	1/2"	19'-0"
c ₁	4	"	10'-0"
d	28	"	4'-0"
e	8	"	3'-0"
e ₁	4	"	11'-0"
e ₂	4	"	13'-0"
f	18	1 1/4"	35'-0"
g ₁	18	"	33'-0"
g ₂	12	"	29'-0"
s	222	1/2"	7'-0"
x	160	"	4'-9"
x ₁	24	"	3'-0"

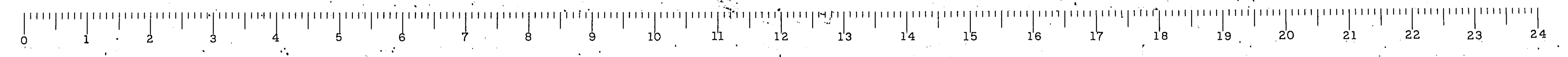
Class X Concrete Cu. Yds. 55.1
Handrail Concrete Cu. Yds. 4.5
Reinforcement Bars Lbs. 18140
Floor Drains Each. 6



GENERAL NOTES
Class X Concrete shall be used throughout.
Floor slab shall be finished according to Art. 37.3 (e) of the Standard Specifications.
Premoulded joint filler shall conform to Art. 102.65 to 102.69 incl. of the Supplemental Specs.

SUPERSTRUCTURE
HARKNESS CREEK
F.A. PROJECT 108-E
ADAMS COUNTY
STA. 109+00

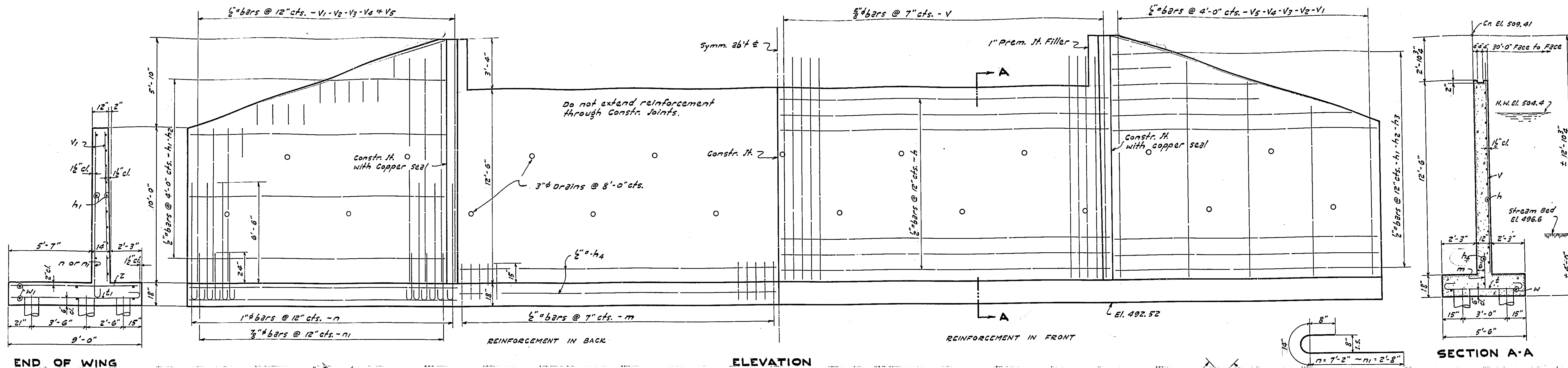
COMPUTED	2/10/40	EXAMINED	6-13-40
CHECKED	A.K. Whelan	PASSED	R.F. Buehl
DRAWN	R.H.W.	APPROVED	[Signature]
CHECKED	R.F.W.		
SPECIAL ASSEMBLED			
CHECKED			



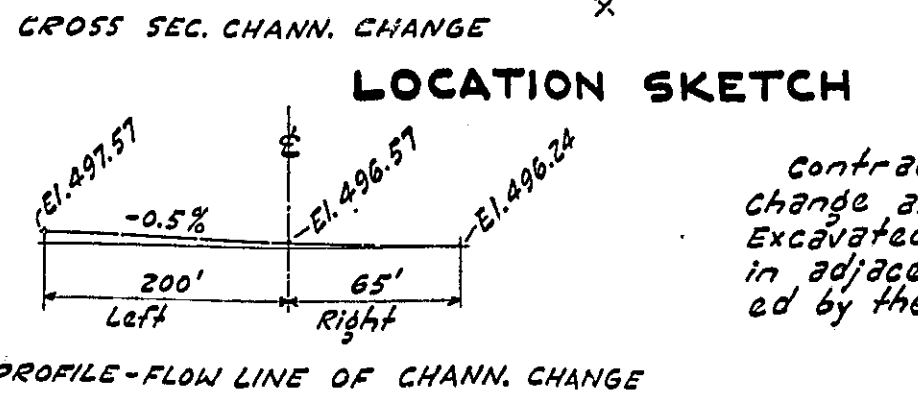
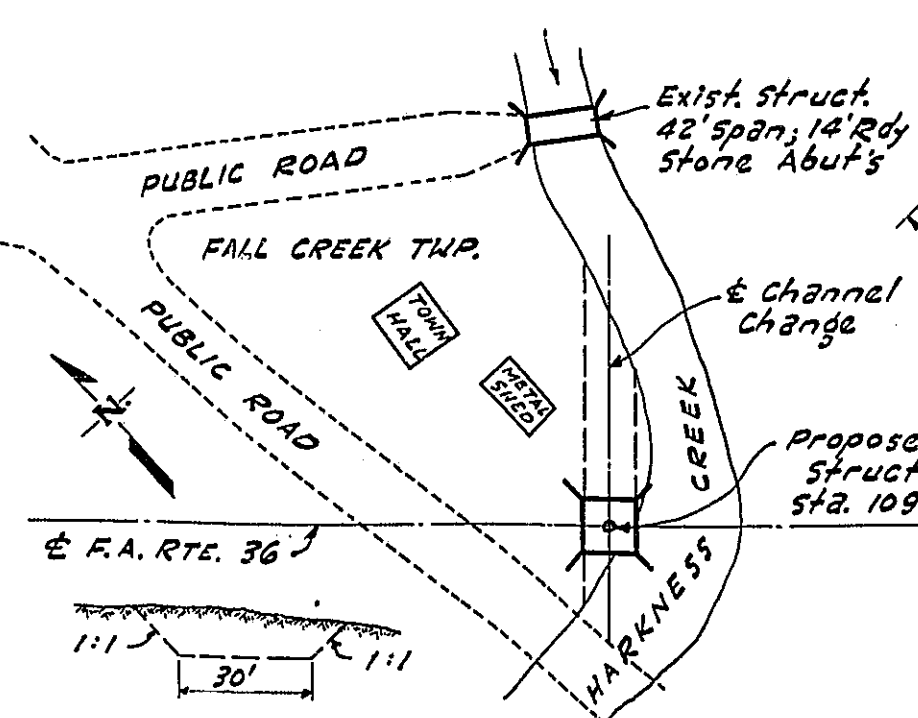
S.M. #11 - Sp. #44 Road 3d Locust 52.5' Lt. 542, 108+85 El. 504.93

STATE OF ILLINOIS
DEPARTMENT OF PUBLIC WORKS & BUILDINGS
DIVISION OF HIGHWAYS

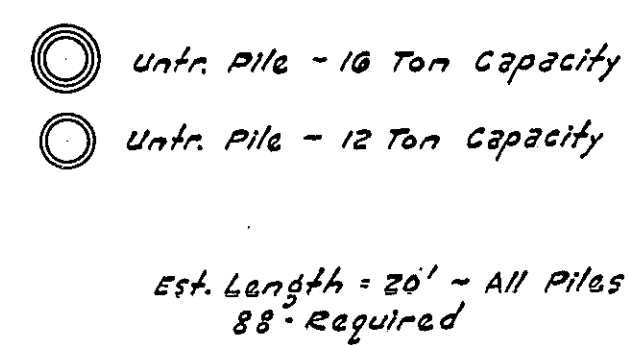
ROUTE NO.	SECTION	COUNTY	TOTAL SHEETS	SHEET NO.	SHEET NO.
FA 36	A2B	Adams	13	7	2 SHEETS
FED. ROAD DIST. NO. 7		ILLINOIS		FED. AID PROJECT - 107E	



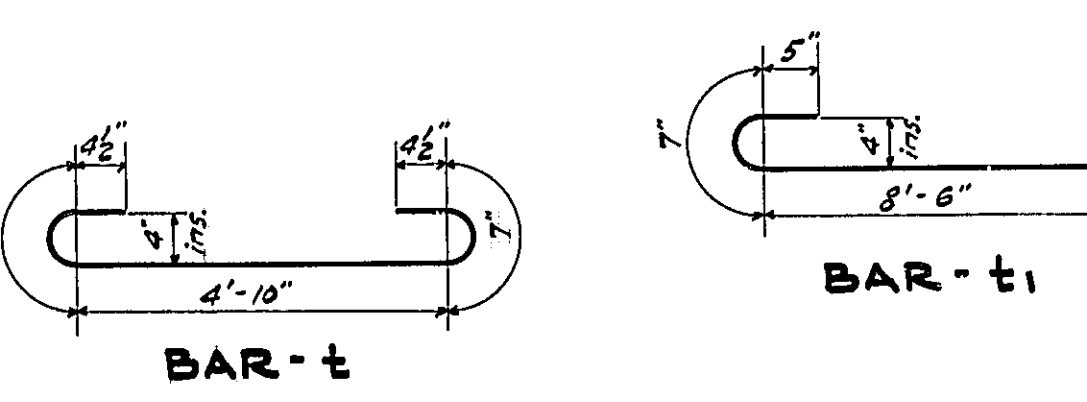
Contractor shall remove existing steel truss in a manner suitable for re-erection after new bridge is completed and open to traffic.



Contractor shall make channel change as shown. Est. 1307 Cu.Yds. Excavated material shall be placed in adjacent roadway fill as directed by the engineer.



Ulnr. Pile - 10 Ton Capacity
Ulnr. Pile - 12 Ton Capacity
Est. Length - 20' - All Piles 88' Required



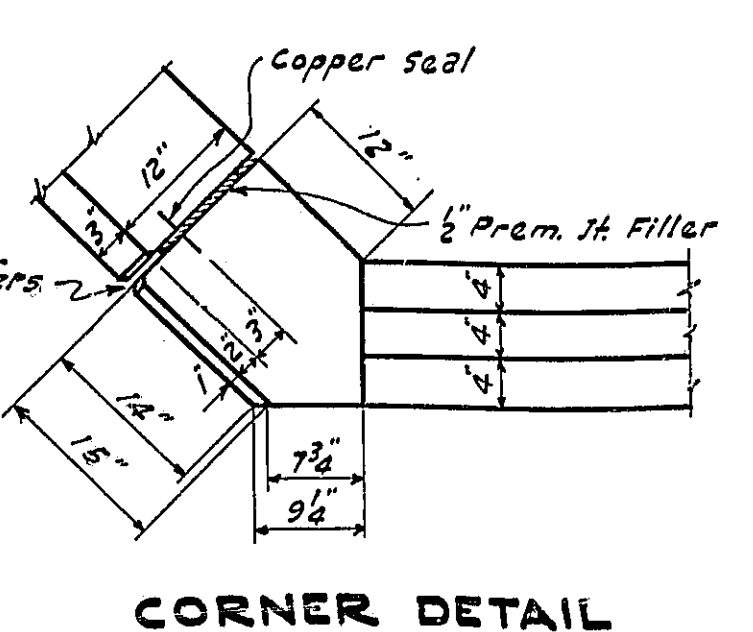
BILL OF MAT'L - 2 ABUT'S

BAR	No.	SIZE	LENGTH
V	144	5/8"	14'-0"
V1	20	5/8"	10'-0"
V2	20	"	11'-6"
V3	24	"	13'-0"
V4	16	"	14'-6"
V5	12	"	15'-6"
h	48	"	21'-0"
h1	56	"	18'-3"
h2	12	"	10'-0"
h3	8	"	4'-0"
m	144	1/2"	2'-6"
n	72	1/2"	9'-0"
n1	68	3/8"	4'-6"
z	112	5/8"	6'-9"
z1	104	5/8"	9'-6"
z2	96	5/8"	8'-3"
w	8	5/8"	22'-6"
w1	24	5/8"	18'-0"
w2	8	5/8"	21'-0"

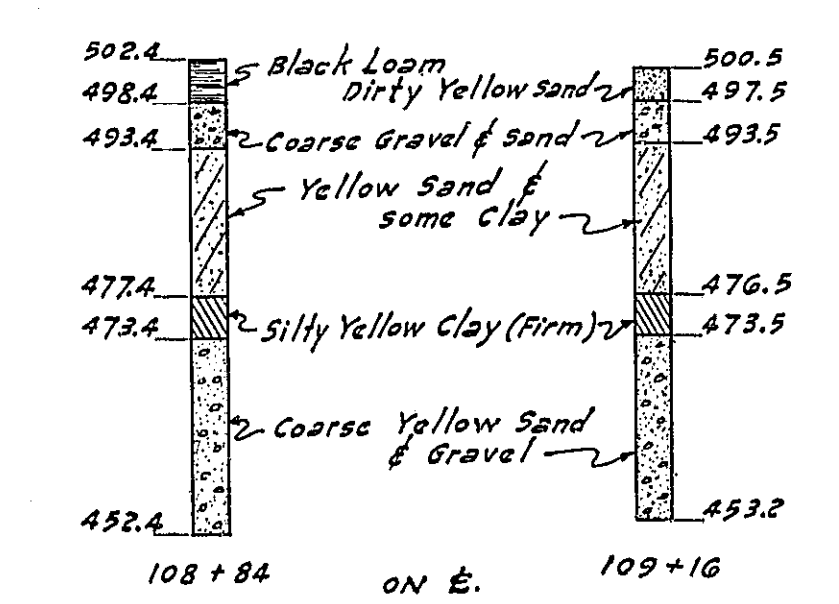
Class "X" Concrete Cu.Yds. 135.6
Reinforcement Bars Lbs. 11510
Removal of Exist. Str. E.S. 1
Channel Excav. Cu.Yds. 1307
Unreinforced Piling (20' Lg.) Lbs. 1760
Test Pile E.S. 1

GENERAL NOTES -
Class "X" concrete shall be used throughout.
Pre-molded joint filler shall conform to Art. 105.65 to 105.69 incl. of the supplemental spec.
The contractor shall drive one test pile as directed by the engineer before ordering remainder of piling.

WATERWAY DATA -
Drainage Area 1400 Acres
Character Hilly
Opening Reg'd - Assumed "C" = 0.8 (72/60) ... 184 Sq. Ft.
Opening Provided 234 Sq. Ft.



COPPER SEAL
Copper seal shall be 16 oz. cold rolled annealed copper with perforated flanges. Splices, when necessary, shall be bolted or brazed. The cost of copper seal shall be included in the unit price per Cu.Yd. for Class "X" Concrete.



BORING DATA
Boring data are shown only as a guide to bidders in estimating soil conditions which may be encountered in the work.

STANDARD	COMPUTED	2/P Owen	EXAMINED	6-13-40
	CHECKED	H. K. Winkler		
	DRAWN	2/10 - J. M. Beck	PASSED	
	CHECKED	J. S. W.	APPROVED	
SPECIAL	ASSEMBLED			
	CHECKED			

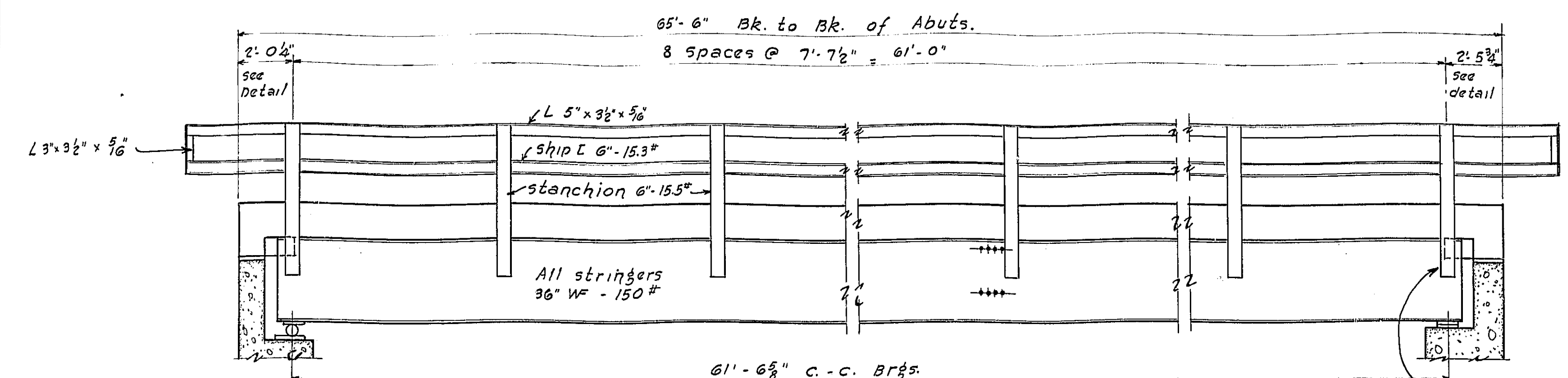
F.A. PROJ. 108-E
F.A. RTE. 36 SEC. 42-B
ADAMS COUNTY
STA. 109+00



STATE OF ILLINOIS
DEPARTMENT OF PUBLIC WORKS & BUILDINGS
DIVISION OF HIGHWAYS

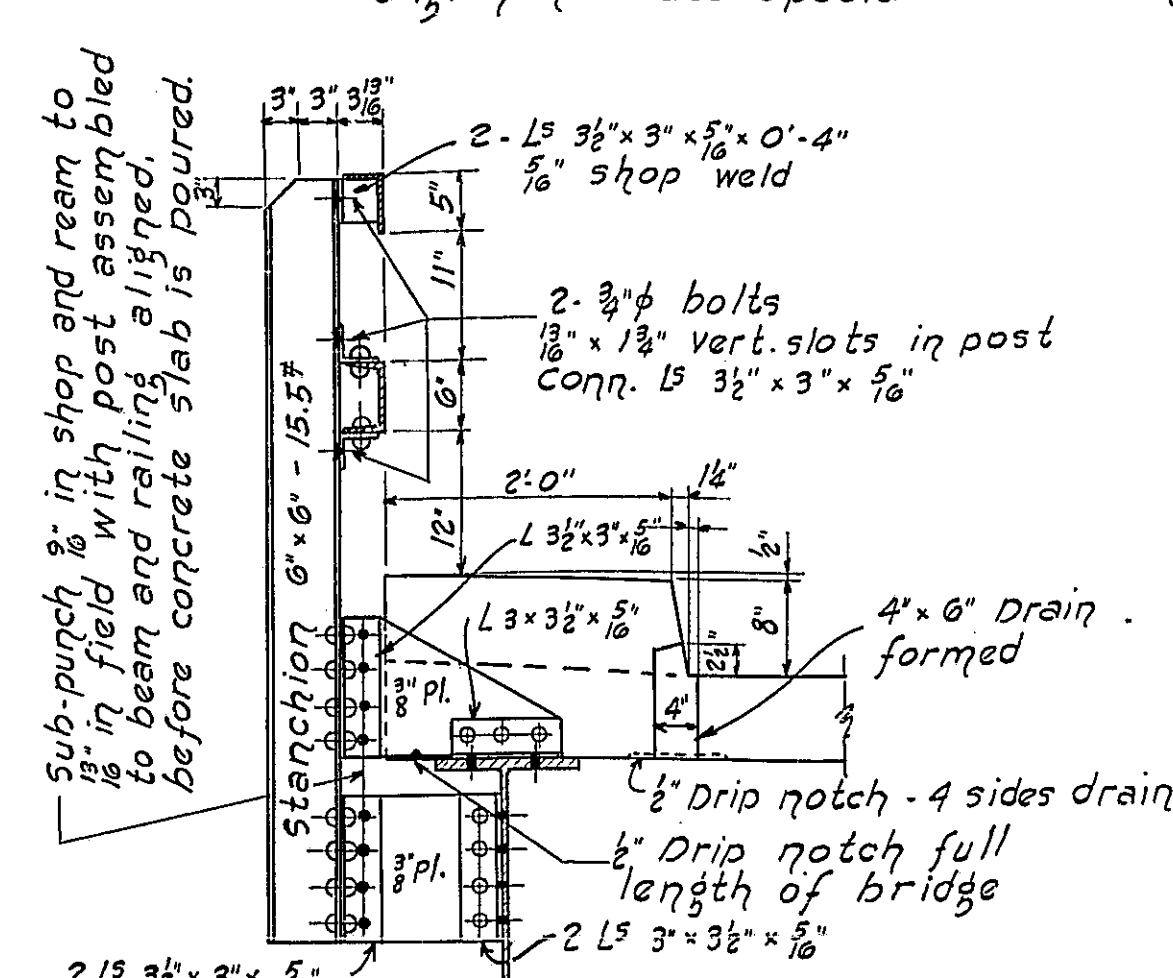
contractor shall tighten bolts connecting rail to posts only sufficiently to hold rail in preliminary alignment. After the slab and safety walks are poured the railing shall be adjusted to true alignment. See special provisions

ROUTE NO.	SECTION	COUNTY	SHEET NO.	SHEET NO.
FA 86	42 B	Adams	13	3
FED. ROAD DIST. NO. 7		ILLINOIS	FED. AID PROJECT - 10 E 47	

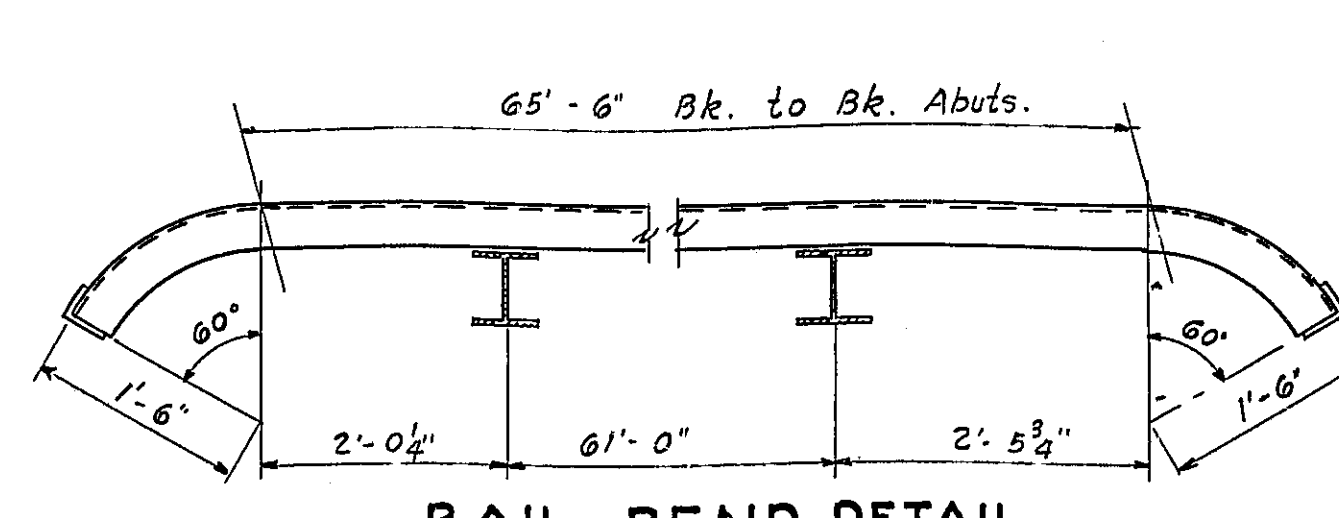


ELEVATION

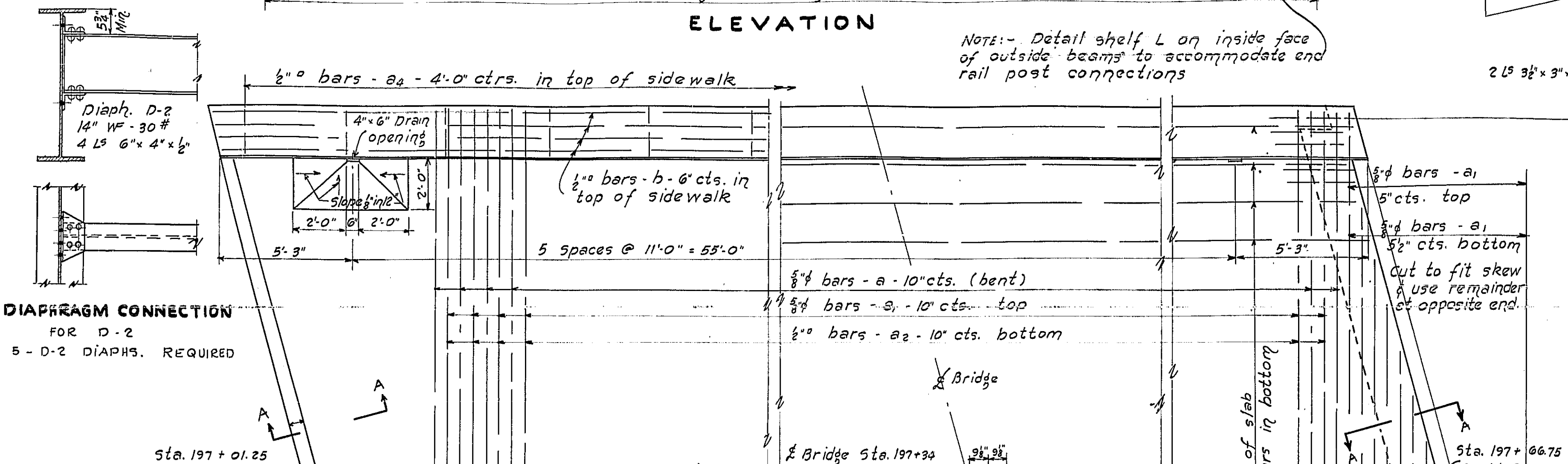
NOTE: Detail shelf L on inside face of outside beams to accommodate end rail post connections



RAIL DETAILS



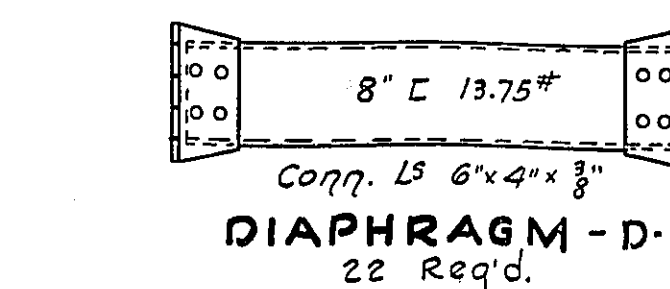
RAIL BEND DETAIL



PLAN

GENERAL NOTES

Class x concrete shall be used throughout.
Floor slab shall be finished in accordance with Art. 57.3 (e) of the standard specifications.
Rivets 3/4" Holes 1 1/4" except as noted. All connections riveted, except as noted.
Inspection of structural steel by Illinois Division of Highways before painting. Paint one shop coat of blue lead paint and two field coats of white lead paint. All paint shall be furnished by the contractor.
Preamoulded joint filler shall conform to Arts. 105.65 to 105.69 incl. of the supplemental specifications.



DIAPHRAGM - D-1
22 Req'd.

STANDARD	COMPUTED	EXAMINED
CHECKED	J.P. Owen	6-13-1940
DRAWN	C.L. HAZLETT	
CHECKED	J.P. Owen	
SPECIAL	ASSEMBLED	
CHECKED		

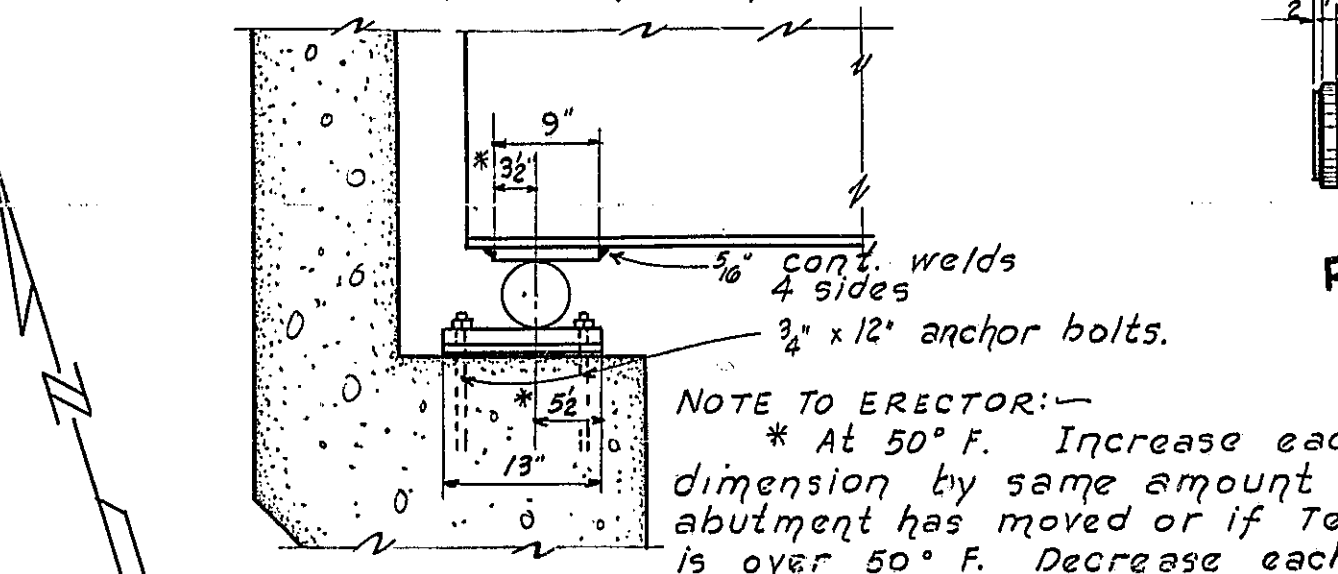
PC 196+51.55 EL. 507.98	P.I. 196+76.25 EL. 508.14	50' V.C.	PC 197+01.25 EL. 508.39	P.I. 197+34 EL. 508.71	65' V.C.	PC 197+66.75 EL. 508.82	P.T. 197+91.75 EL. 508.90	50' V.C.	P.T. 198+16.75 EL. 508.08
----------------------------	------------------------------	----------	----------------------------	---------------------------	----------	----------------------------	------------------------------	----------	------------------------------

PROFILE

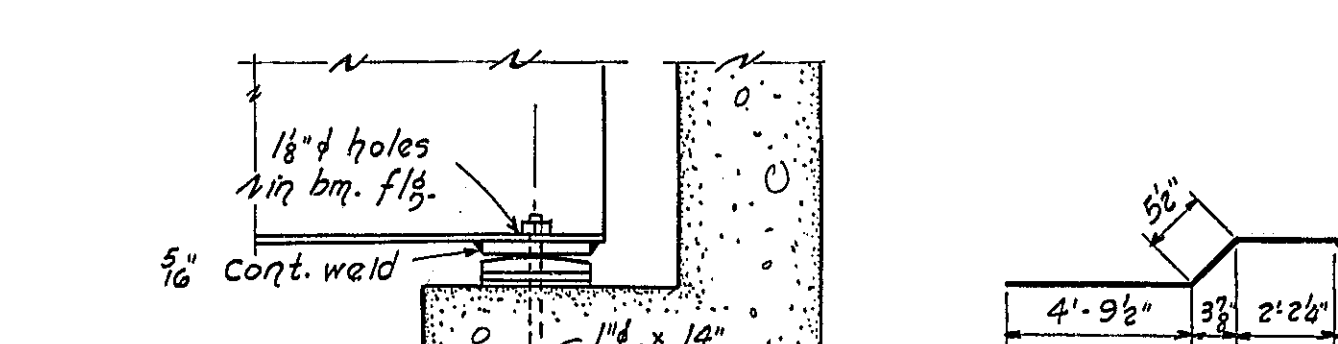
FILLET DETAIL

fillet height equals difference in elev. between bottom of slab & top of bm, plus D.L. Defl.

Rollers, lead plates, bearing plates, TOP BEARING PLS. and anchor bolts shall be furnished and set in accordance with Art. 50a(d) of the supplemental specs. Total wt. 2400 lbs. Included for payment with str. steel.

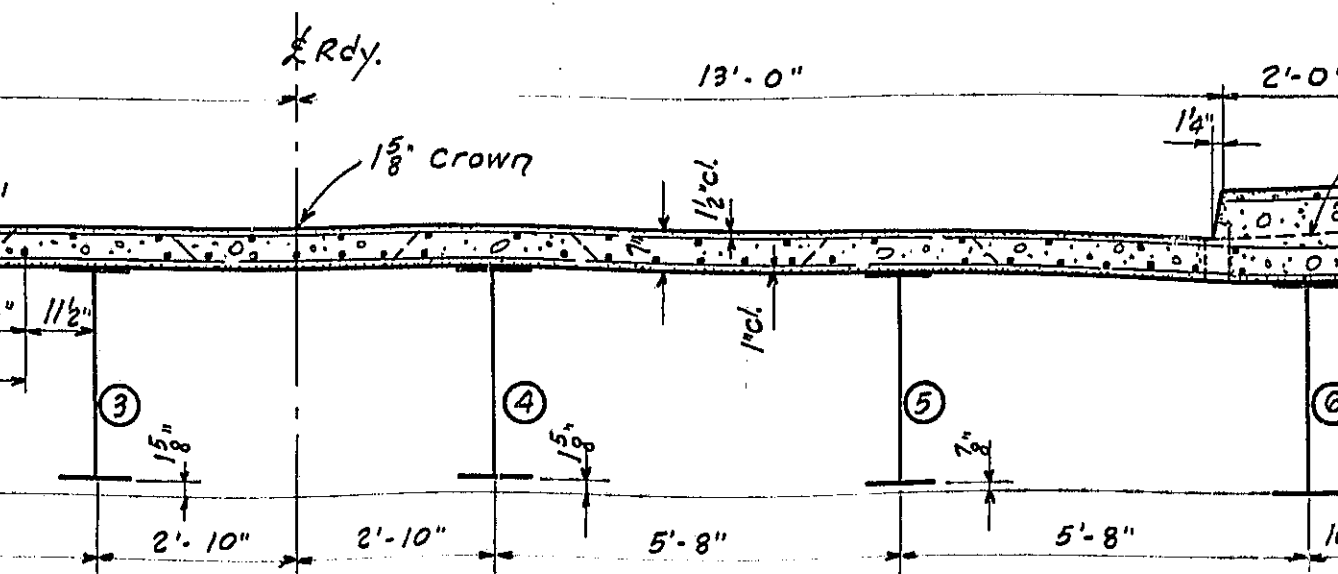


BEARING DETAILS-EXPANSION END

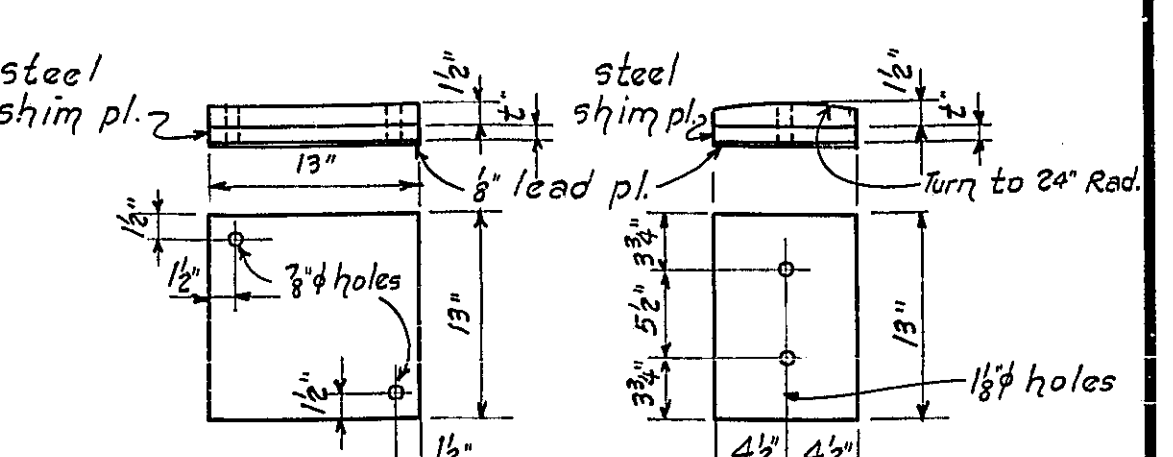


BEARING DETAILS-FIXED END

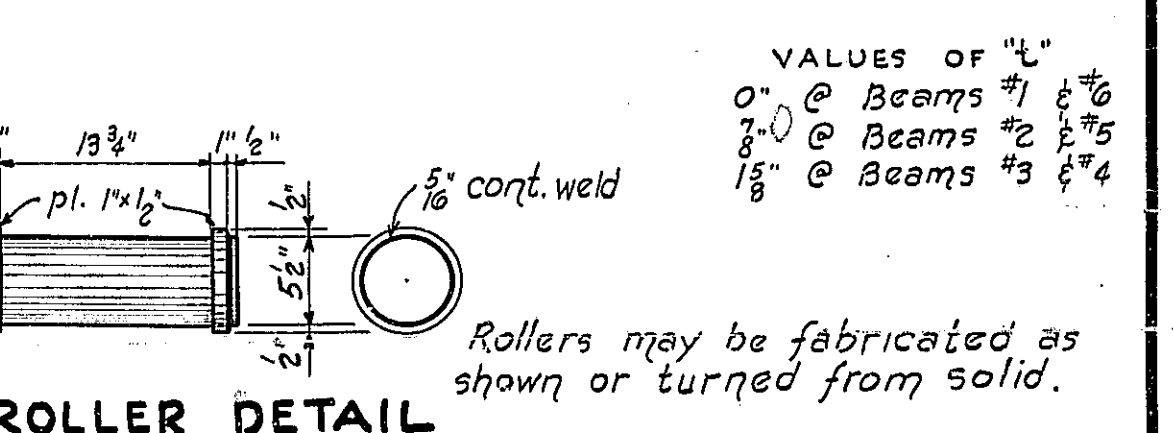
D. L. DEFLECTION DIAGRAM



CROSS SECTION



EXP. END BOTTOM BEARING PLS.



FIXED END BOTTOM BEARING PLS.

Rollers may be fabricated as shown or turned from solid.

ROLLER DETAIL

TOP BEARING PLS.

BEARING DETAILS-EXPANSION END

BEARING DETAILS-FIXED END

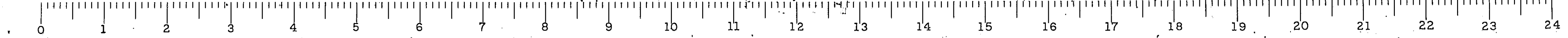
SECTION A-A

BILL OF MATERIAL

BAR	NO.	SIZE	LENGTH
a	69	3/4"	30'-6"
a1	104	"	29'-8"
a2	68	"	31'-6"
a3	20	"	2'-3"
a4	34	"	7'-9"
b	58	3/4"	32'-9"
b1	70	3/4"	33'-0"
c	6	3/4"	29'-0"
c1	20	"	5'-9"
x	120	3/4"	5'-0"

Class x concrete Cu.Yds. 53.1
Reinforcement Bars Lbs. 12280
Structural steel Lbs. 69770

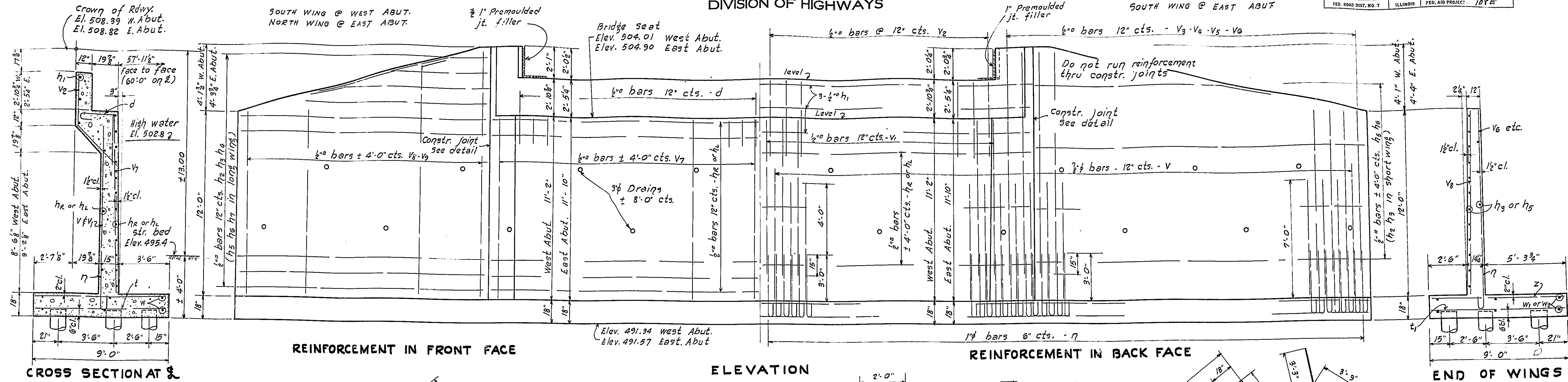
SUPERSTRUCTURE
AUSTIN CREEK
F.A. PROJECT 108-E
F.A. RT. 36 - SEC. 42-B
ADAMS COUNTY
STA. 197 + 34.



B.M. #19 - 5.6 W. IN ROOT 48° OAK 76° RT. STA. 190+15 - ELEV. 506.07

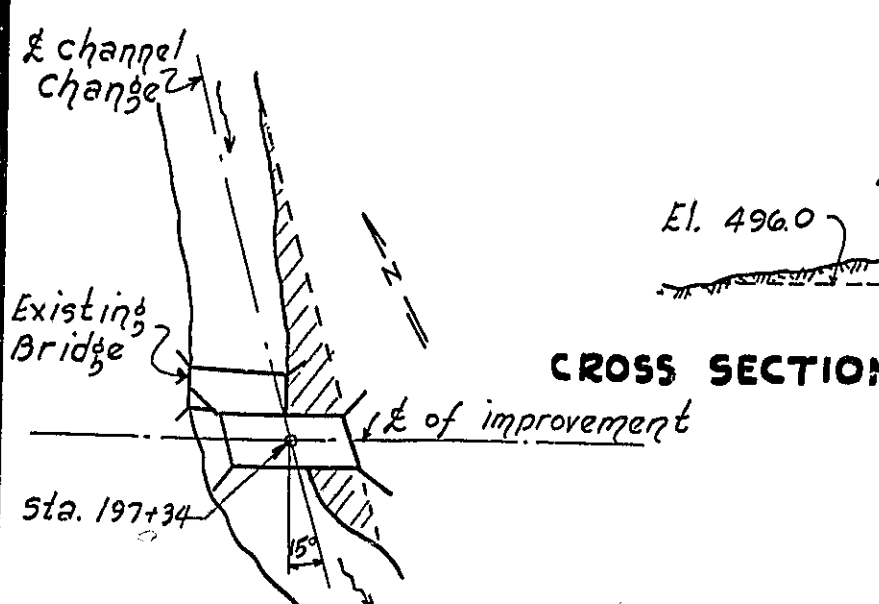
STATE OF ILLINOIS
DEPARTMENT OF PUBLIC WORKS & BUILDINGS
DIVISION OF HIGHWAYS

PROJECT NO.	SECTION	COUNTY	SHEET NO.	SHEET NO.
FA 36	42B	Adams	13	2
FED. ROAD DIST. NO. 7	ILLINOIS	FED. AID PROJECT	127	

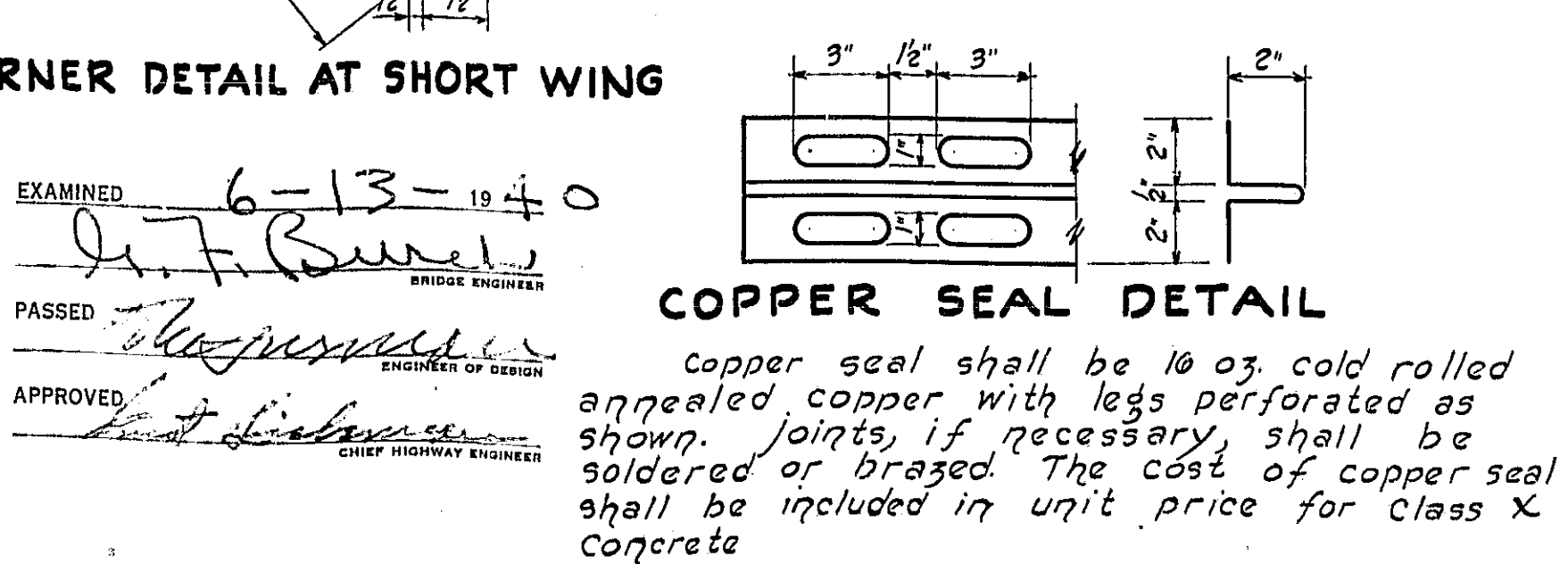
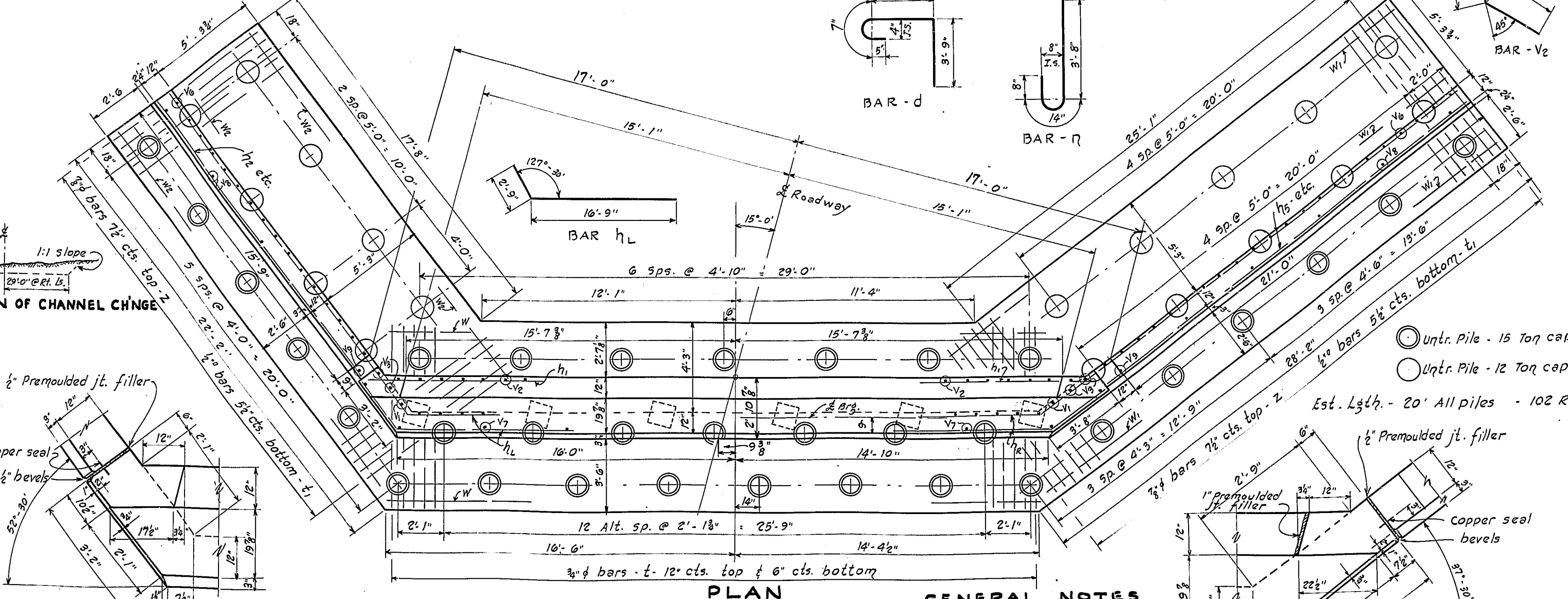


WATERWAY DATA

DRAINAGE AREA	3600 ACRES
CHARACTER	HILLY
OPENING REQ'D. "C" x "B" (MIN)	372 SQ. FT.
OPENING PRESENT BRIDGE	250 SQ. FT.
OPENING PROPOSED BRIDGE	394 SQ. FT.



LOCATION SKETCH
Existing structure of Pony Truss 14' Roy. Steel Tube and stone Abutts. to be removed by contractor. The steel truss shall be dismantled in manner suitable for re-erection.
Contractor shall make channel change as shown. Excavated material shall be placed in roadway embankment back of Abutments as directed by the Engineer.
Est. 2170 cu. yds.



BORING DATA

2961	BLACK DIAT	502.1
	LAYERS OF	500.7
	FAT BOULDERS	
4861	AND SAND	499.1
4821	COARSE GRAVEL	483.1
	SILTY YELLOW	482.1
	CLAY 50 FT	
4661	COARSE GRAVEL	467.1
	AND SAND	
4561	COARSE GRAVEL	457.1
	AND SAND	
197+03	3'0" CLAY	197+65

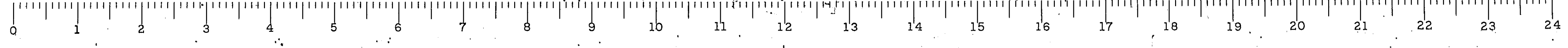
GENERAL NOTES
class X concrete shall be used thruout.
Preamoulded joint filler shall conform to Arts. 105.65 to 105.69 incl. of the supplemental specs.
Contractor shall drive two test piles as directed by the Engineer before ordering remainder of piling.
Boring data are shown only as a guide to bidders in estimating soil conditions which may be encountered in the work.

BILL OF MATERIAL - 2 ABUTS.

BAR NO.	SIZE	LENGTH
V	148	8" φ 7'-0"
V1	66	6" φ 9'-3"
V2	66	" " 7'-0"
V3	38	" " 14'-3"
V4	14	" " 13'-3"
V5	14	" " 11'-9"
V6	18	" " 10'-3"
V7	22	" " 11'-0"
V8	10	" " 12'-0"
V9	12	" " 15'-0"
d	64	1/2" φ 8'-9"
h1	29	3/4" φ 19'-6"
h2	29	" " 17'-0"
h3	30	" " 18'-3"
h4	6	" " 12'-0"
h5	4	" " 7'-0"
h6	30	" " 21'-9"
h7	6	" " 16'-0"
h8	4	" " 9'-0"
n	298	1/4" φ 5'-6"
t	186	3/4" φ 8'-9"
t1	212	" " 8'-9"
z	156	1/2" φ 8'-9"
w	24	1/2" φ 15'-6"
w1	24	" " 14'-0"
w2	24	" " 11'-0"
hL	29	1/2" φ 19'-6"

Class X concrete cu. yds 167.4
Reinforcement Bars Lbs. 18970
Remov. of exist. struct. Each ONE
Channel Excavation cu. yds 2170
Untr. Piling (Est. 20') Lin. Ft. 2040
Test Piles Each TWO

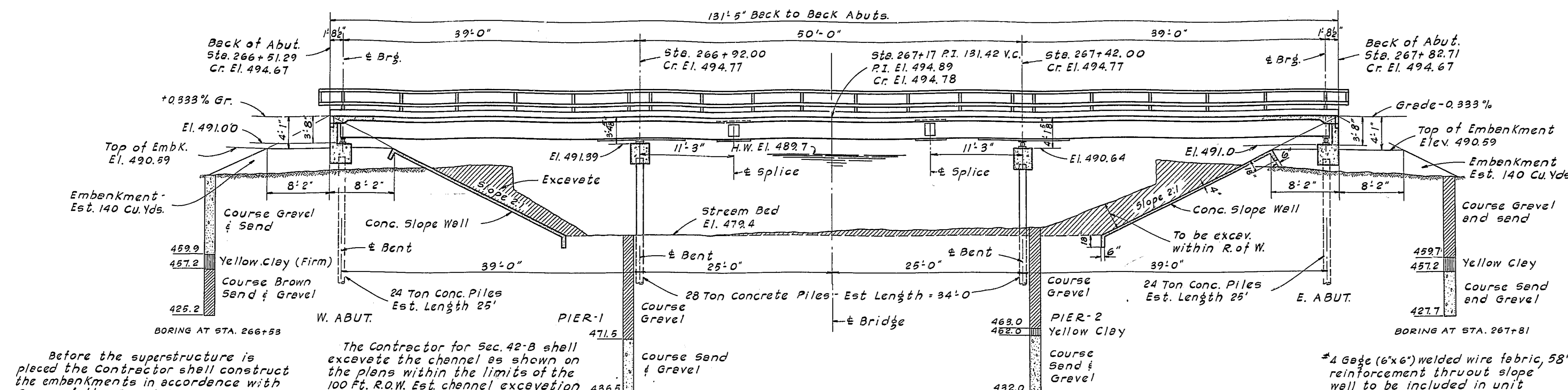
F.A. PROJECT 108-E
F.A. RT. 36 - SEC. 42-B
ADAMS COUNTY
STA. 197 + 34



STATE OF ILLINOIS
DEPARTMENT OF PUBLIC WORKS & BUILDINGS
DIVISION OF HIGHWAYS

ROADWAY ROUTE NO.	SECTION	COUNTY	TOTAL SHEETS	SHEET NO.	SHEET NO. / SHEETS
FA 36	42-B	Adams	13	10	3 SHEETS
FED. ROAD DIST. NO. 7	ILLINOIS	FED. AID PROJECT - 10 3 E			

B.M. 26 HORIZ. 600 SPIKE & WASHER IN 18' COTTONWOOD
30' RT. STA. 266+97 ELEV. 485.13
EXISTING STRUCT. STEEL TRUSS SPAN 82'-0" ROADWAY 16'-0"
BUILT 1887 TO BE REMOVED BY CONTRACTOR FOR SEC. 42-B
SUPERSTRUCTURE SHALL BE SALVAGED FOR RE-ERECTION.
SEE SECTION 47 OF SUPPL. SPEC'S.

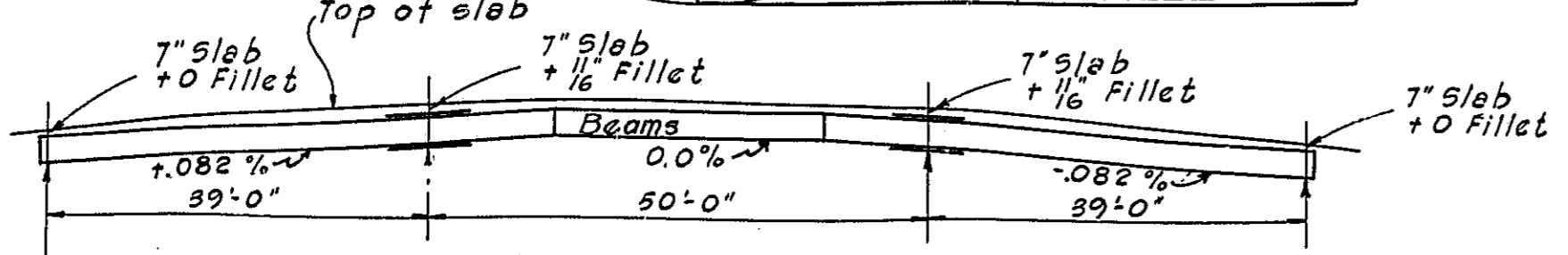
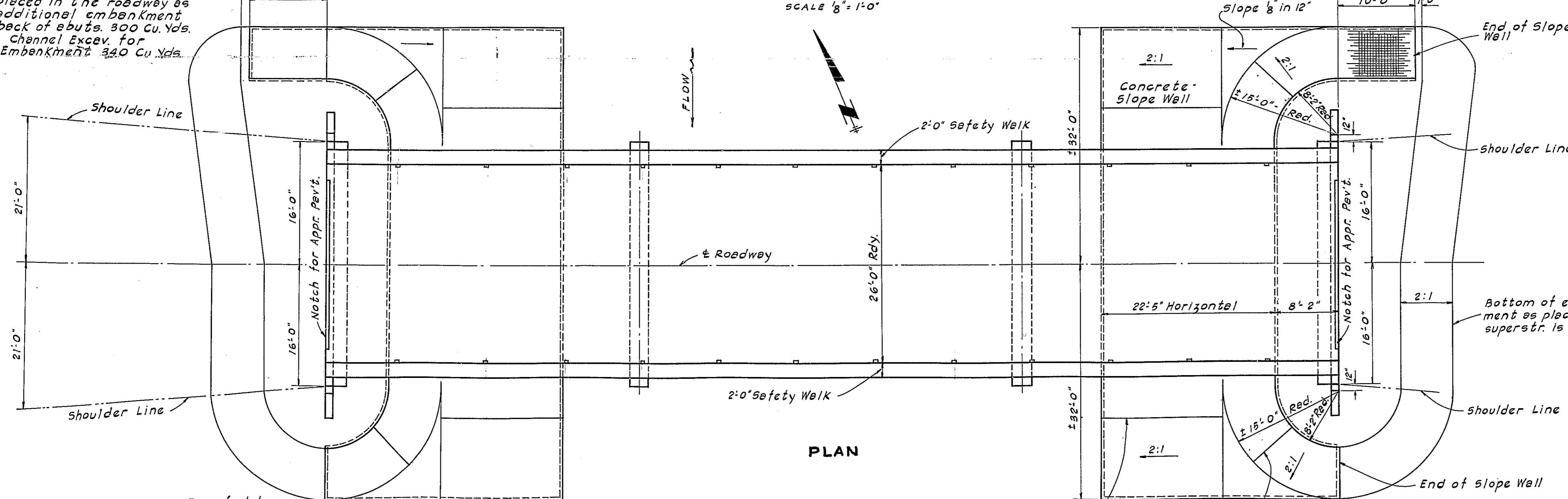


Before the superstructure is placed the contractor shall construct the embankments in accordance with Sec. 13 of the Suppl. Specs. Channel excavation to be placed in the roadway as additional embankment back of abuts. 300 Cu. Yds. Channel Excav. for Embankment 340 Cu. Yds.

The Contractor for Sec. 42-B shall excavate the channel as shown on the plans within the limits of the 100 Ft. R.O.W. Est. channel excavation = 640 Cu. Yds.

#4 Gage (6"x6") welded wire fabric, 53#/100' reinforcement thruout slope wall to be included in unit price bid for slope wall.

LONGITUDINAL SECTION
SCALE 1/8" = 1'-0"



STANDARD	COMPUTED	EXAMINED	DATE
	Edward J. Dahlman		6-13-40
CHECKED	M. S. Carter		
DRAWN	E. J. Dahlman		
CHECKED	M. S. G.		
SPECIAL	ASSEMBLED		
	CHECKED		

TOTAL BILL OF MATERIAL		
ITEM	SUPER	SUB. TOTAL
Class X Concrete	99.3	44.9
Reinforcement Bars	28,570	2750
Structural Steel	95,700	95,700
Precast Conc. Piles (25' Lg.)		250
Precast Conc. Piles (34' Lg.)		408
Test Piles		2
Slope Wall		431
Channel Excavation		640
Removal of Exist. Struct. Each		1

WATERWAY INFORMATION	
Drainage Area	5800 Acres
Character	Hilly
Opening Req'd for "C" (Talbot)	532 Sq. Ft.
Present Bridge Opening	750 Sq. Ft.
Proposed Bridge Opening	903 Sq. Ft.

GENERAL NOTES

Class X Concrete shall be used thruout. Concrete floor slab shall be finished in accordance with Art. 513 (e) of the Std. Spec's. The contractor shall pour the floor slab in one continuous operation.

Premoulded Jt. Filler shall conform with Art. 105.65 to 105.69 incl. of the Suppl. Specs. Ribs 1/4" holes 1/8" except as noted. All connections riveted except as noted.

Inspection of steel by Ill. Div. of Highways before painting. Structural steel shall receive one shop coat of blue lead paint and two field coats of white lead paint. All paint furnished by the Contractor.

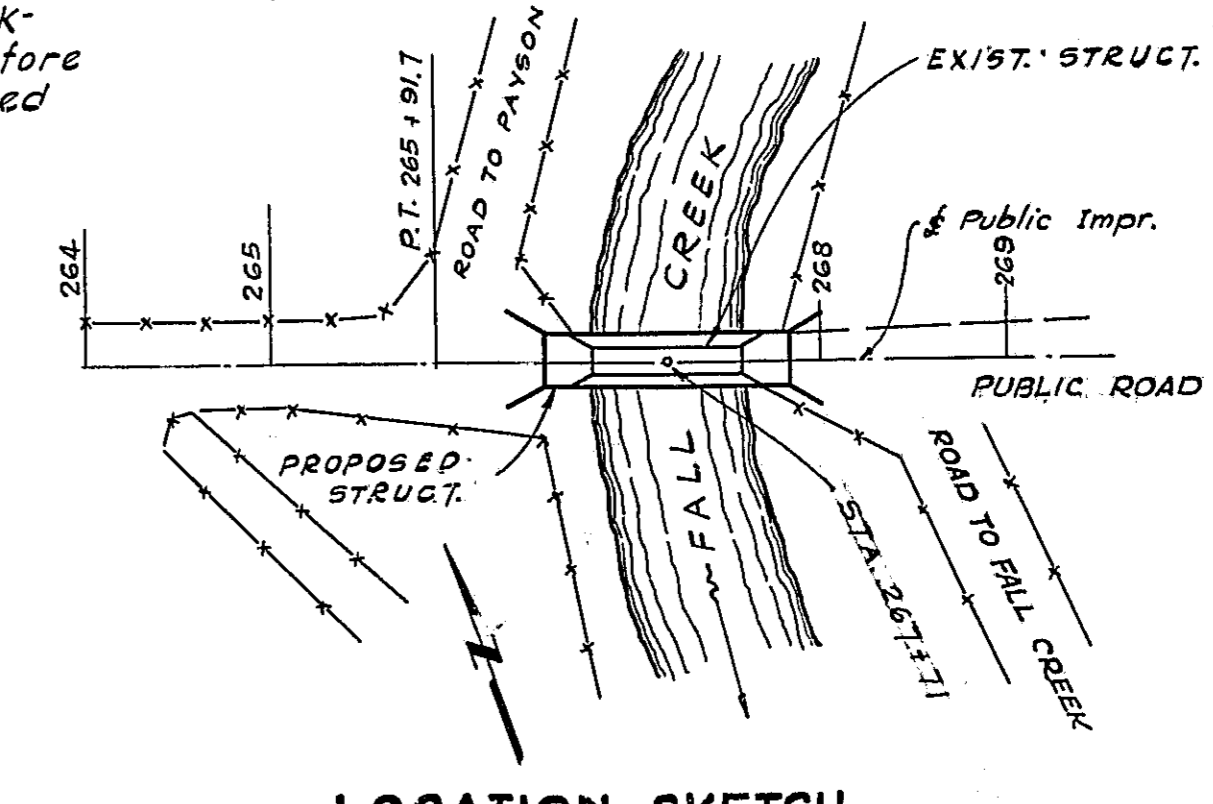
Continuous welding of cover plates to I-beams shall be made in such a manner as to prevent warping of main material. The plate shall be clamped securely to the beam flanges before welding. The skip step-back method of welding shall be used, or other effective means to obtain satisfactory results.

The Contractor shall drive two test piles as directed by the Engineer, before casting remainder of piling.

Borings are shown on plan only as a guide to bidders in estimating soil conditions which may be encountered in the work.

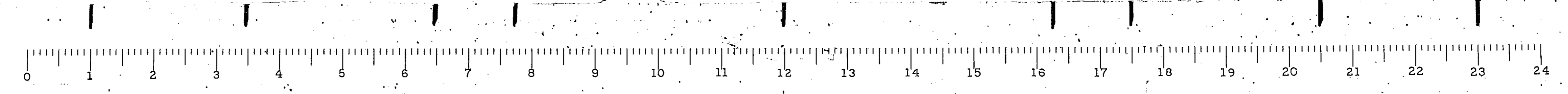
All splices for stringers shall have rivet holes subpunched 1/8" and reamed to 1/4" with all stringers of a continuous unit assembled in the shop in their proper positions and with or without diaphragms in place. Leave assembled for shop inspection. Assemble handrail to beam in shop, align, match-mark and leave assembled for inspection. Provide one lock washer on all bolts connecting rail to post. Also provide 1/8" and 1/4" shims for rail connections to 50% of posts. All rollers, bearing plates, lead plates and anchor bolts shall be finished, painted and set in accordance with Art. 503 (d) of the Suppl. Spec's and are included for payment as structural steel. Anchor bolts shall be set before riveting diaphragms over abuts and piers.

All welding shall comply with Art. 51.6 (35) of the Suppl. Spec's.



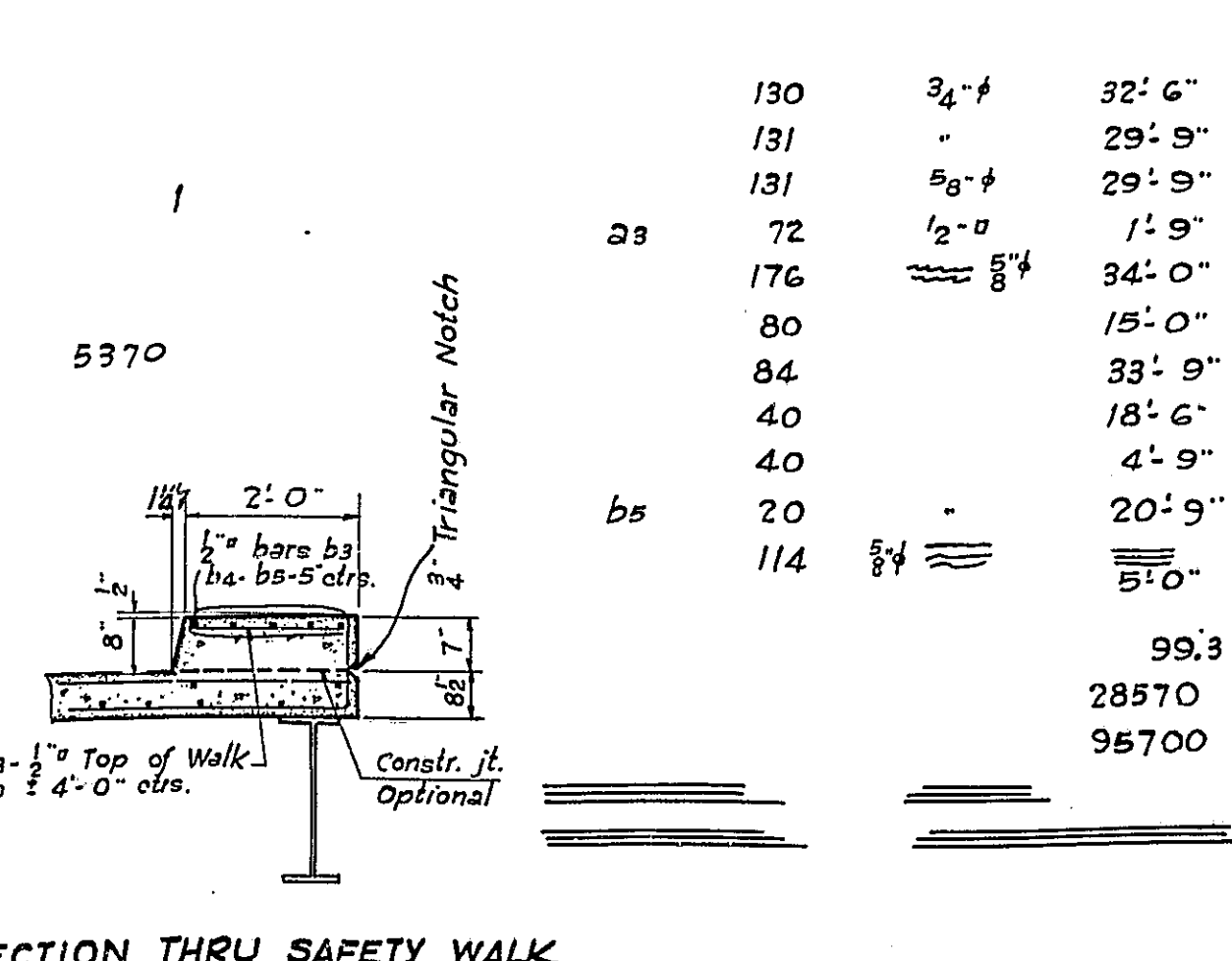
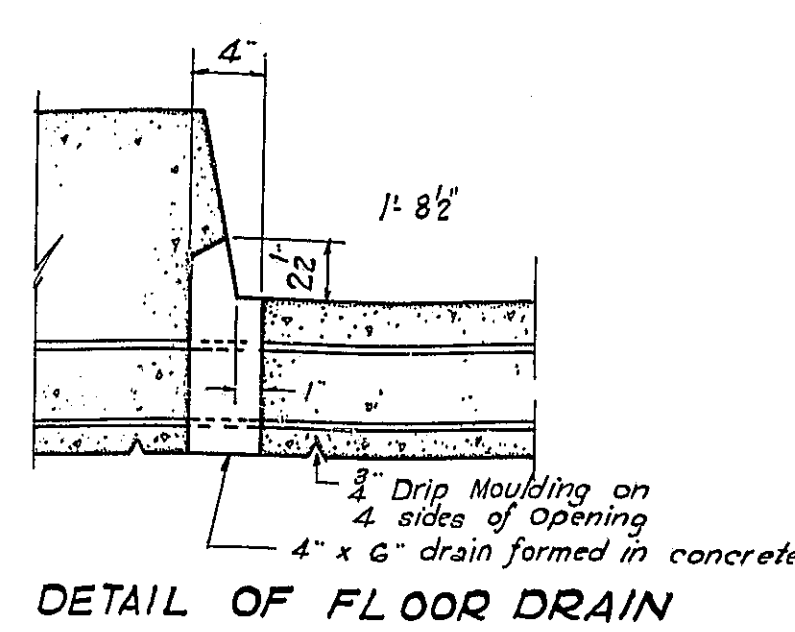
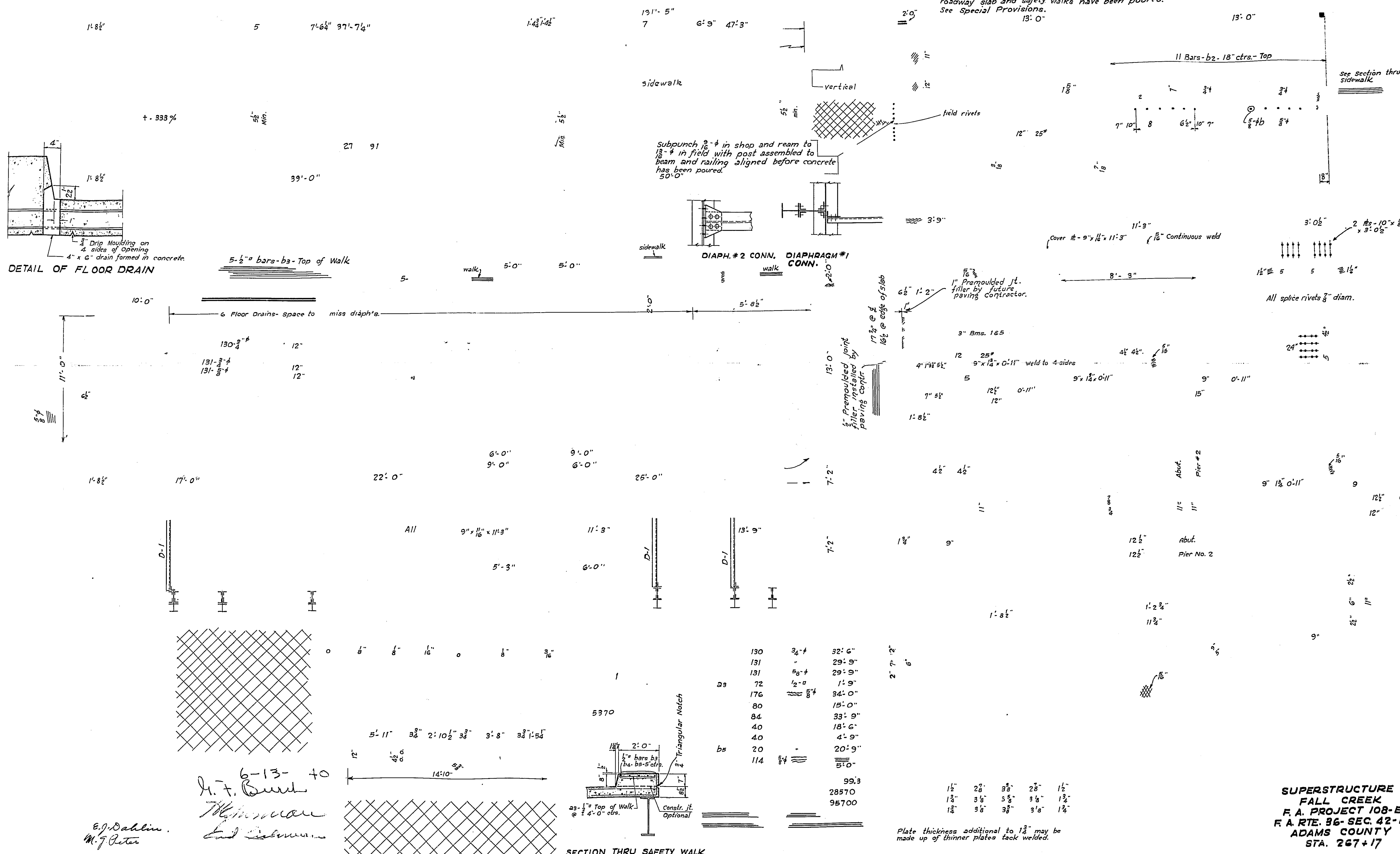
GENERAL PLAN
FALL CREEK
F. A. PROJECT 108-E
F. A. RTE. 36 - SECT. 42-B
ADAMS COUNTY
STA. 267+17

H-20 LOADING



Route No.	Section	County	Total Station	Sheet No.
FA 36	42-B	Adams	13	11
Total Road Out Mile			11.85	108 E

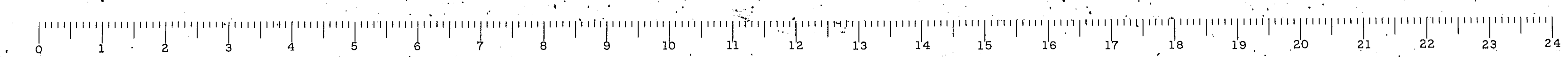
Contractor shall tighten bolts connecting rail to posts only sufficiently to hold rail in preliminary alignment. Railing shall be adjusted to true alignment after roadway slab and safety walks have been poured. See Special Provisions.



130	3/4"	32'-6"
131	"	29'-9"
131	3/4"	29'-9"
72	1/2"	1'-9"
176	3/4"	34'-0"
80	"	15'-0"
84	"	33'-9"
40	"	18'-6"
40	"	4'-9"
20	"	20'-9"
114	"	5'-0"
99.3		
28570		
95700		

6-13-40
H. F. Burt
M. J. Burt
E. J. Dahlin
M. J. Burt

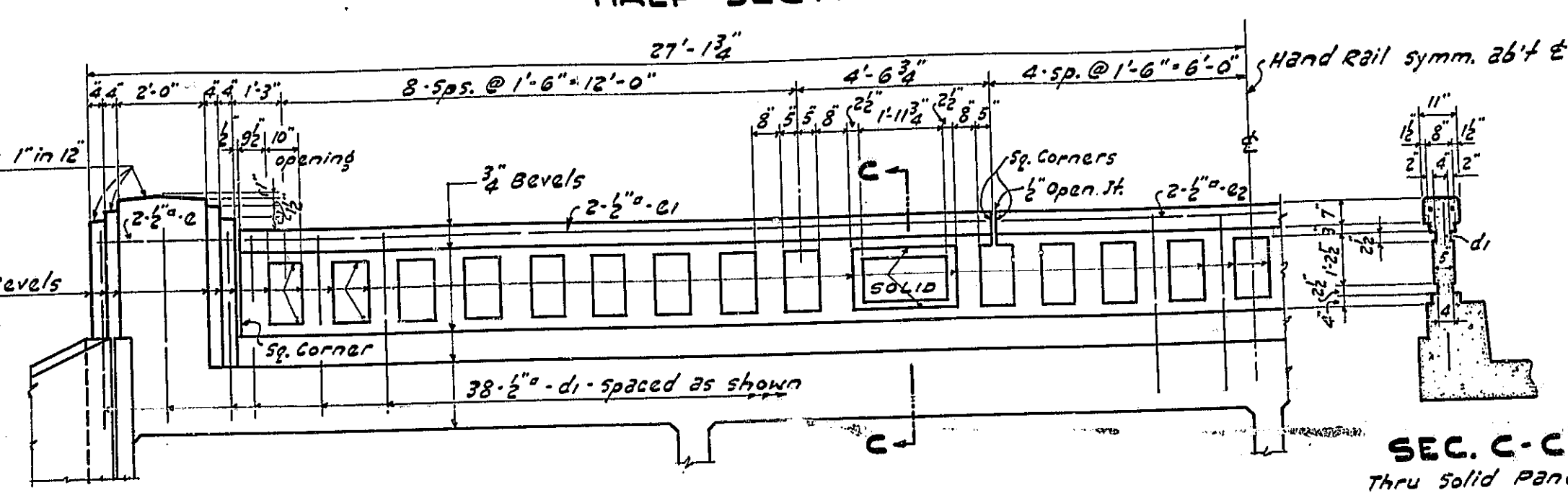
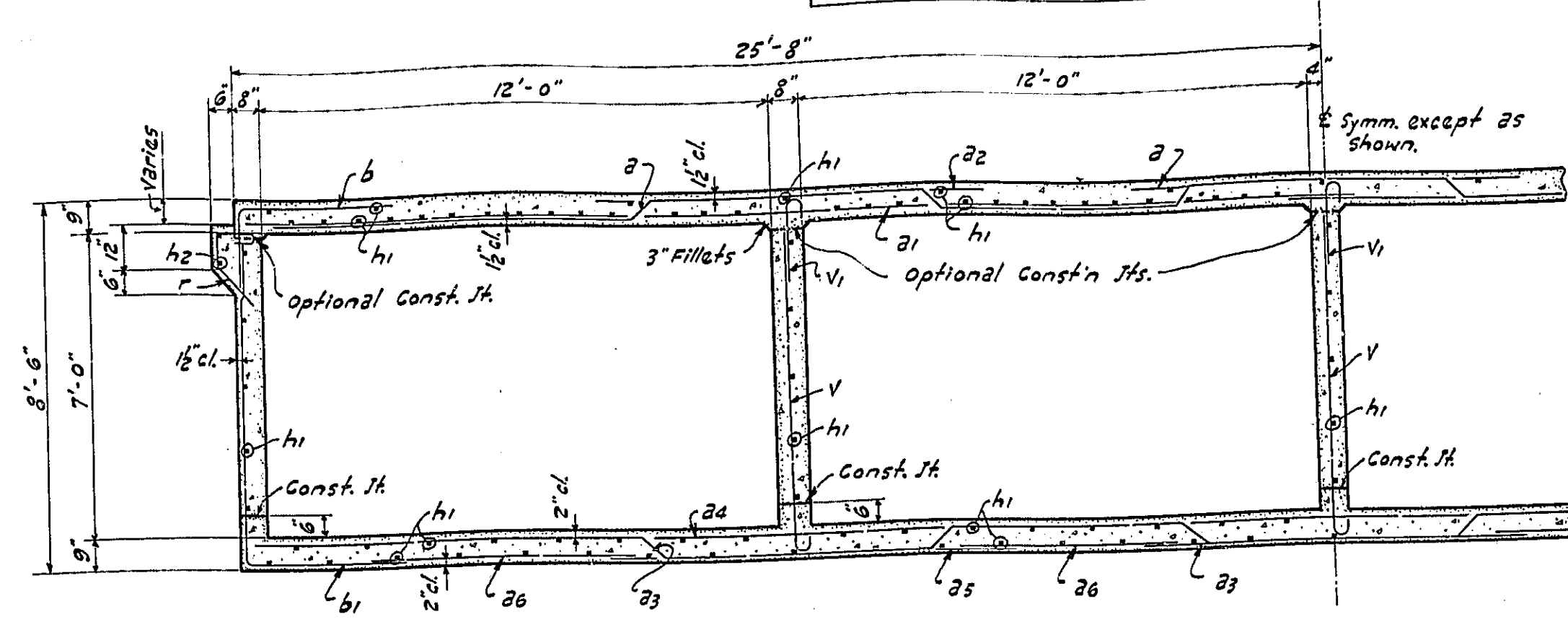
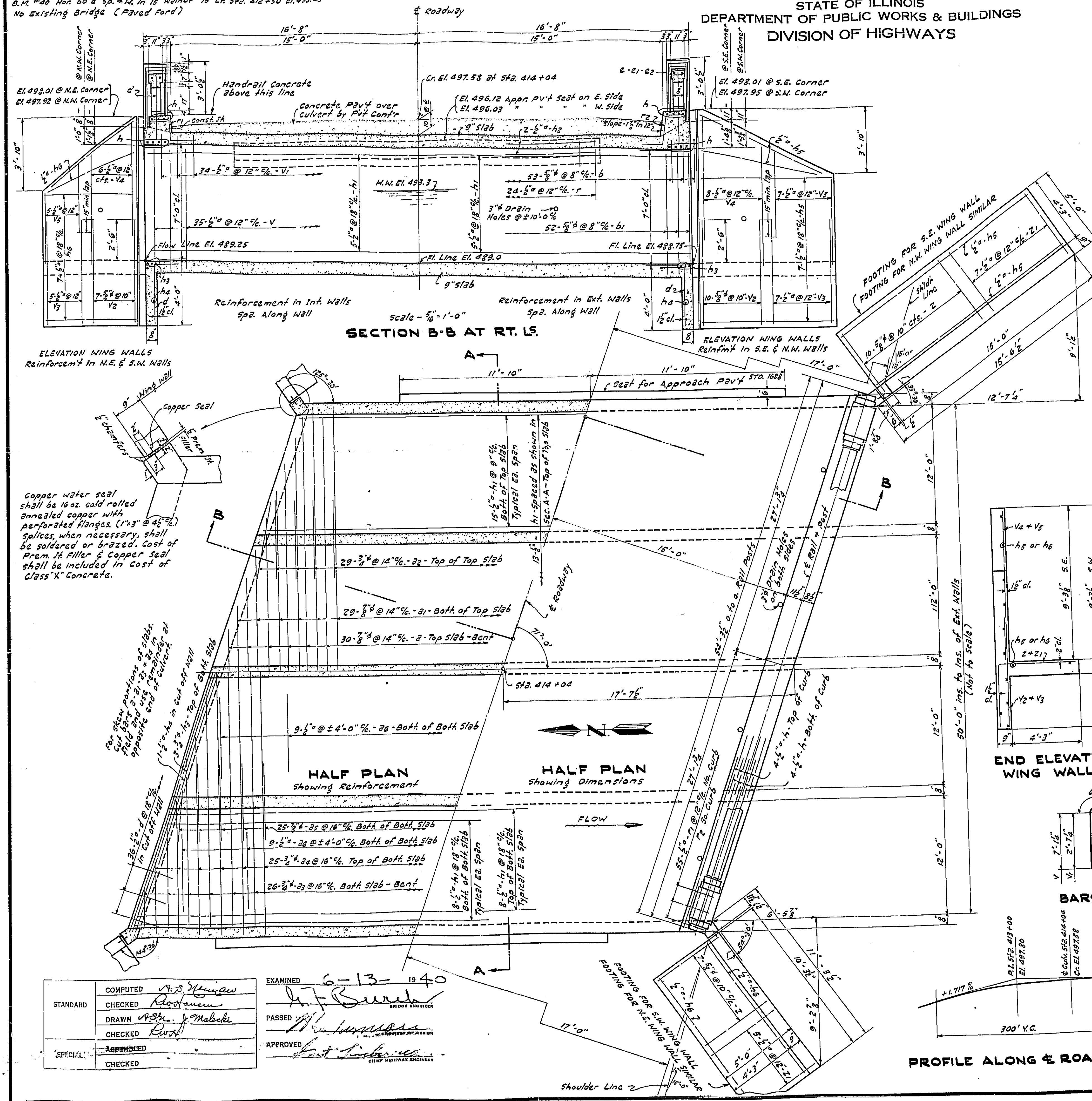
SUPERSTRUCTURE
FALL CREEK
F. A. PROJECT 108-E
F. A. RTE. 36- SEC. 42-B
ADAMS COUNTY
STA. 267+17



B.M. 400 N. on G.D. 52. 44. in 15' Walnut 75' LA Sta. 412+50 El. 492.43
No Existing Bridge (Paved Road)

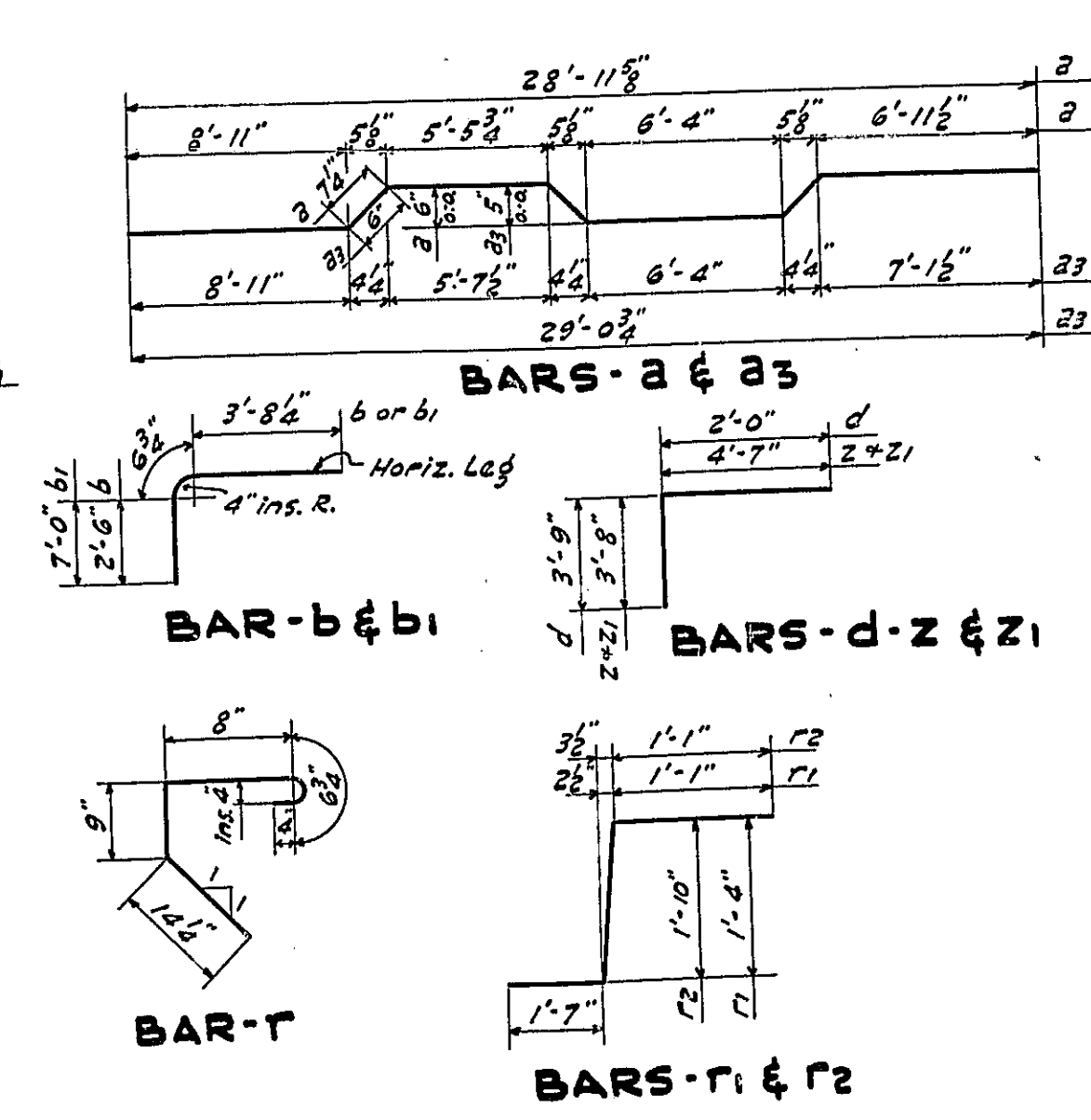
STATE OF ILLINOIS
DEPARTMENT OF PUBLIC WORKS & BUILDINGS
DIVISION OF HIGHWAYS

SECTION	COUNTY	TOTAL SHEETS	SHEET NO.
FA 36 42 B	Adams	13	13
FED. ROAD DIST. NO. 7		ILLINOIS FED. AID PROJECT - 108 E	



BILL OF MATERIAL

BAR No.	SIZE	LENGTH	BAR No.	SIZE	LENGTH
a	60	3/4"	h3	12	3/4"
b	106	3/4"	h4	4	27'-3"
b1	104	3/4"	h5	22	1/2"
d	72	1/2"	h6	22	1/2"
d1	76	1/2"	h7	48	1/2"
e	8	1/2"	h8	55	1/2"
e1	8	1/2"	h9	24	1/2"
e2	4	1/2"	h10	34	1/2"
h	32	1/2"	h11	24	1/2"
h1	324	1/2"	h12	24	1/2"
h2	4	1/2"			
Class X Concrete		Cu.Yds.	172.7		
Hand Rail Concrete		Cu.Yds.	7.0		
Reinforcement Bars		Lbs.	23210		

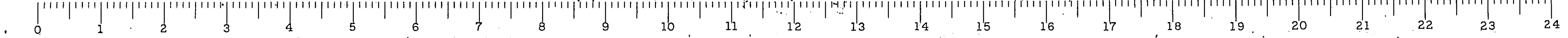


GENERAL NOTES
 Class X Concrete shall be used throughout, except as noted.
 Handrail concrete shall be used in Handrails & Posts.
 Pre-molded Jt. Filler shall conform to Ark 105.68 to 105.69 incl. of the Supplemental Specs.
 Curb & Hand Rails shall not be poured until after the forms for Top Slab have been removed.
 Culvert Slabs & Walls may be poured monolithically. Exposed edges shall be bevelled as shown or noted.
 Embankments shall be placed symmetrically on both sides of culvert after Top Slab is in position.

DRAINAGE DATA
 Drainage Area 1500 Acres
 Character Hilly
 Assumed "C" Tolboats Formula 0.8
 Area Reg'd by Formula 193 Sq. Ft.
 Area Provided 206 Sq. Ft.

4-SPAN CULVERT
 PROJ. 108-E REG. F.A.
 F.A. RTE. 36 SEC. 42-B
 ADAMS COUNTY
 STA. 414+04

COMPUTED: J. J. Thompson
 CHECKED: J. J. Thompson
 DRAWN: J. J. Thompson
 CHECKED: J. J. Thompson
 EXAMINED: J. J. Thompson
 PASSED: J. J. Thompson
 APPROVED: J. J. Thompson



H-20 LOADING