

STATE OF ILLINOIS
DEPARTMENT OF TRANSPORTATION

F.A.P. RTE.	SECTION	COUNTY	TOTAL SHEETS	SHEET NO.
827	D7 BRIDGE CLEANING 2025-1	WABASH	3	1
		ILLINOIS	CONTRACT NO. 74D38	

FOR INDEX OF SHEETS, SEE SHEET NO. 2
ADT: 6800

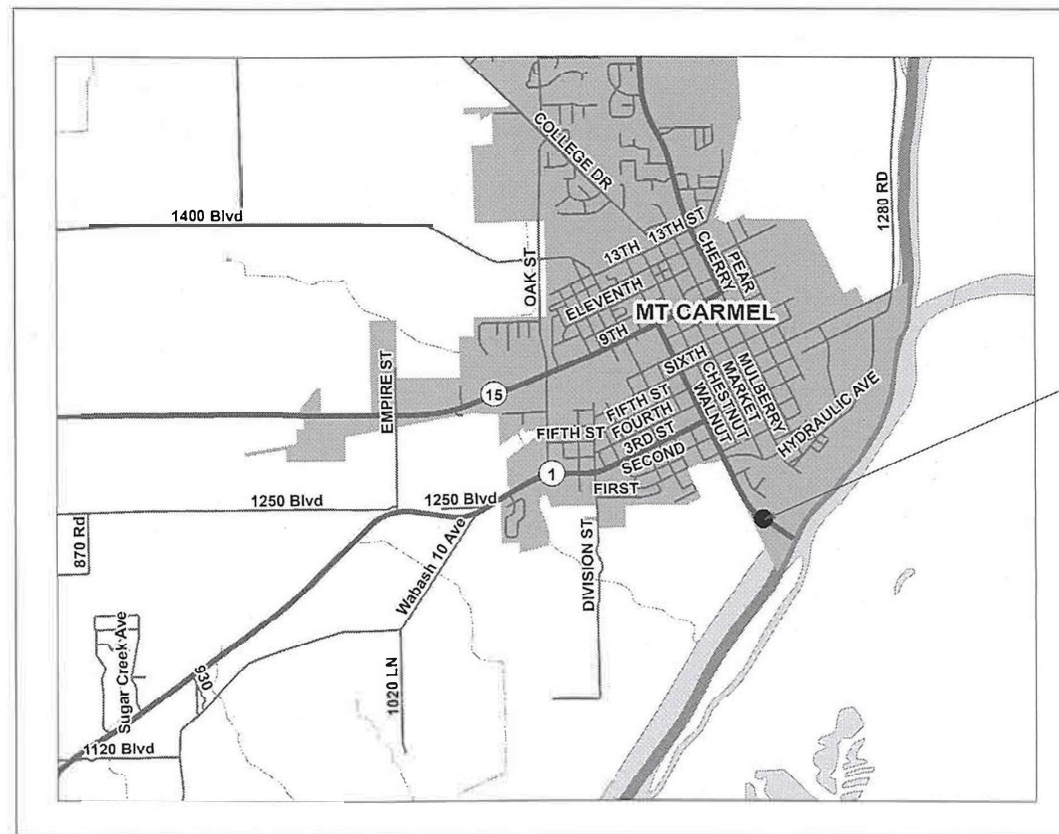
PROPOSED
HIGHWAY PLANS

FAP ROUTE 827 (ILL 15)
SECTION D7 BRIDGE CLEANING 2025-1

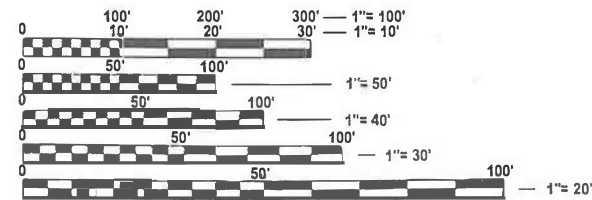
BRIDGE CLEANING
WABASH COUNTY

C-97-003-25

D-97-003-25



STRUCTURE 093-0021



FULL SIZE PLANS HAVE BEEN PREPARED USING STANDARD ENGINEERING SCALES. REDUCED SIZED PLANS WILL NOT CONFORM TO STANDARD SCALES. IN MAKING MEASUREMENTS ON REDUCED PLANS, THE ABOVE SCALES MAY BE USED.

J.U.L.I.E.
JOINT UTILITY LOCATION INFORMATION FOR EXCAVATION
1-800-892-0123
OR 811

PROJECT ENGINEER: MATT BOWER
PROJECT MANAGER: LEVI LUND

CONTRACT NO. 74D38

PROJECT LENGTH = 2877.7 FT. = 0.54 MILE

STATE OF ILLINOIS
DEPARTMENT OF TRANSPORTATION

SUBMITTED November 7, 2024
Jeffrey P. Myer
REGIONAL ENGINEER

January 31, 2025
[Signature]
ENGINEER OF DESIGN AND ENVIRONMENT

January 31, 2025
[Signature]
DIRECTOR OF HIGHWAYS PROJECT IMPLEMENTATION

PRINTED BY THE AUTHORITY
OF THE STATE OF ILLINOIS

INDEX OF SHEETS

SHEET NO.	ITEM
1	COVER SHEET
2	INDEX OF SHEETS & HIGHWAY STANDARDS
3	SUMMARY OF QUANTITIES

THE FOLLOWING STANDARDS ARE A PART OF THESE PLANS AND ARE INCLUDED AFTER SHEET NO. 3:

STD. NO.	DESCRIPTION
000001-08	STANDARD SYMBOLS, ABBREVIATIONS AND PATTERNS
001006	DECIMAL OF AN INCH AND OF A FOOT
701001-02	OFF-ROAD OPERATIONS, 2L,2W, 15' MINIMUM AWAY FROM PAVEMENT EDGE
701006-05	OFF-ROAD OPERATIONS, 2L,2W, 15' AWAY TO EDGE OF PAVEMENT
701201-05	LANE CLOSURE, 2L,2W, DAY ONLY, FOR SPEEDS >= 45 MPH
701901-10	TRAFFIC CONTROL DEVICES

MODEL: Gen Notes (Sheet)
 FILE NAME: c:\p\work\evictollund\1034469\1034469\74D38-sht-gen-note.dgn

USER NAME = lvi,lund	DESIGNED -	REVISED -
	DRAWN -	REVISED -
	CHECKED -	REVISED -
PLOT DATE = 10/8/2024	DATE -	REVISED -

**STATE OF ILLINOIS
DEPARTMENT OF TRANSPORTATION**

GENERAL NOTES

SCALE: SHEET 2 OF 3 SHEETS STA. TO STA.

F.A.P. RTE.	SECTION	COUNTY	TOTAL SHEETS	SHEET NO.
827	D7 BRIDGE CLEANING 2025-1	WABASH	3	2
CONTRACT NO. 74D38				
ILLINOIS FED. AID PROJECT				

MODEL: SQO [Sheet]
 FILE NAME: c:\p\work\pw\rd\lund\l1034489\74D38-eh-SQO.dgn

CODE NO.	ITEM	UNIT	TOTAL QUANTITY	CONSTR. CODE	
				50% ILLINOIS	50% INDIANA
				BRIDGE	
				0047	
				URBAN	
59200101	BRIDGE WASHING NO. 1	EACH	1	1	
67100100	MOBILIZATION	L SUM	1	1	
70107025	CHANGEABLE MESSAGE SIGN	CAL DA	28	28	
X7010520	TRAFFIC CONTROL AND PROTECTION, STANDARD 701201 (SPECIAL)	L SUM	1	1	

REV - MS

USER NAME = levi.lund	DESIGNED -	REVISED -	STATE OF ILLINOIS DEPARTMENT OF TRANSPORTATION	SUMMARY OF QUANTITIES		F.A.P. RTE.	SECTION	COUNTY	TOTAL SHEETS	SHEET NO.	
	DRAWN -	REVISED -				827	D7 BRIDGE CLEANING 2025-1	WABASH	3	3	
	CHECKED -	REVISED -		SCALE:		SHEET 3 OF 3 SHEETS		STA. TO STA.		CONTRACT NO. 74D38	
PLOT DATE = 11/7/2024	DATE -	REVISED -		ILLINOIS FED. AID PROJECT							