

STATE OF ILLINOIS
DEPARTMENT OF TRANSPORTATION

F.A.I. RTE.	SECTION	COUNTY	TOTAL SHEETS	SHEET NO.
64	82-(1,2)BDR	ST. CLAIR	22	1
		ILLINOIS	CONTRACT NO. 76U17	

FOR INDEX OF SHEETS, SEE SHEET NO. 2

TRAFFIC DATA

FUNCTIONAL CLASSIFICATION: INTERSTATE

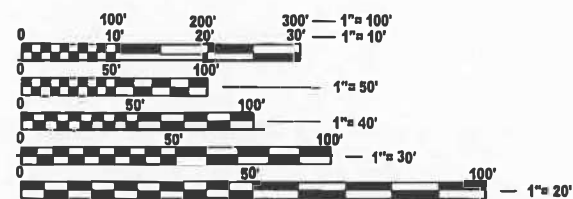
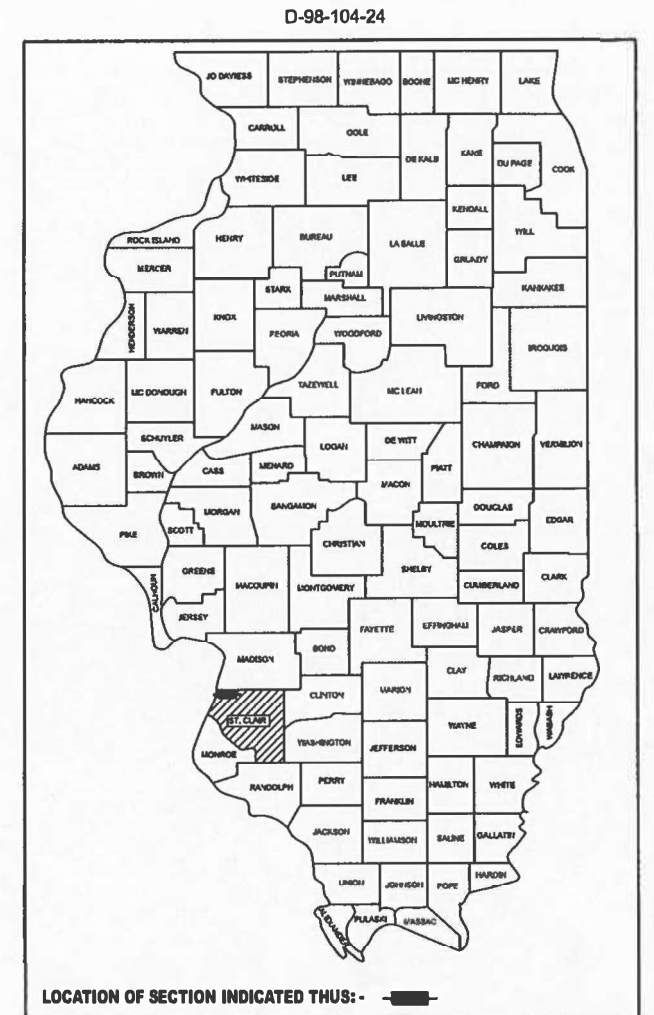
FAI 64 (I-64)
2023 ADT (ACTUAL): 75,800
2025 ADT (EST.): 76,900
2045 AOT (EST.): 88,400
SU: 3.0%
MU: 10.2%

PROPOSED
HIGHWAY PLANS

FAI ROUTE 64 (I-64)
SECTION 82-(1,2)BDR

BRIDGE REPAIRS
ST. CLAIR COUNTY

C-98-192-24

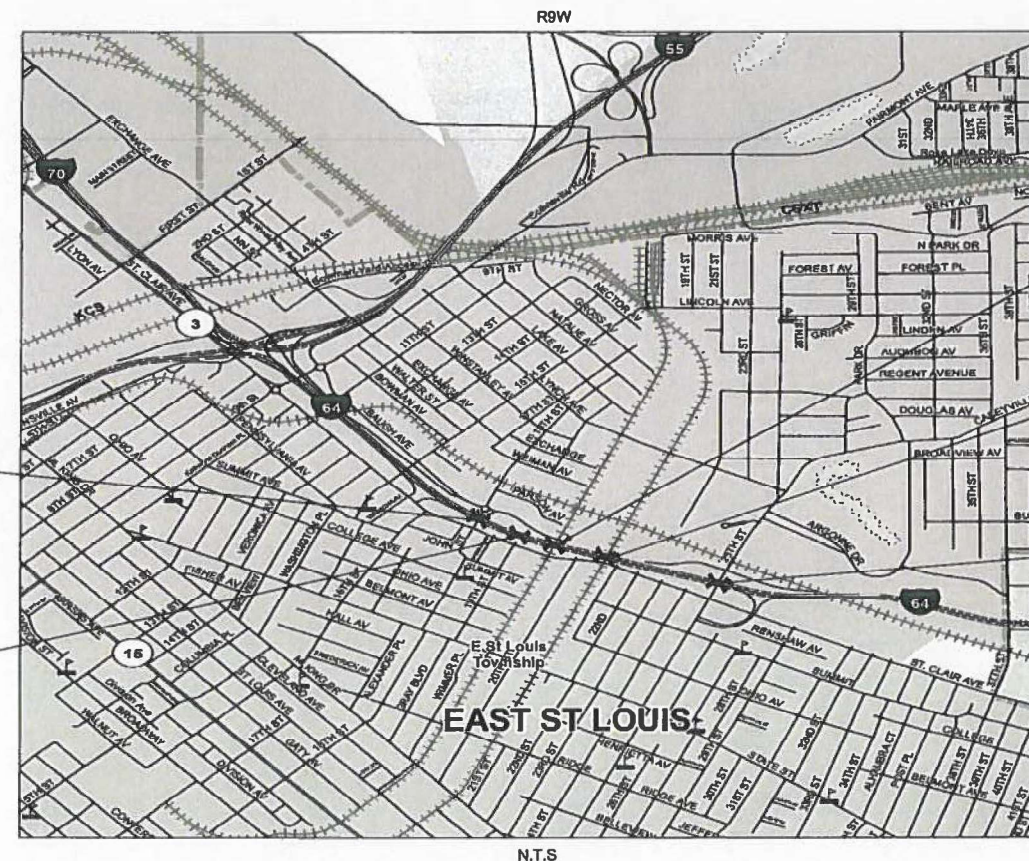


FULL SIZE PLANS HAVE BEEN PREPARED USING STANDARD ENGINEERING SCALES. REDUCED SIZED PLANS WILL NOT CONFORM TO STANDARD SCALES. IN MAKING MEASUREMENTS ON REDUCED PLANS, THE ABOVE SCALES MAY BE USED.

J.U.L.I.E.
JOINT UTILITY LOCATION INFORMATION FOR EXCAVATION
1-800-892-0123
OR 811

PROJECT ENGINEER: BILLIE OWEN, P.E.
PROJECT MANAGER: MIKE BERG, P.E.

CONTRACT NO. 76U17



SN 082-0152
EB I-64 OVER
18TH ST.
LAT: 38.624894° N
LONG: 90.134847° W

SN 082-0155
EB I-64 OVER
ABANDONED RDWY "C"
LAT: 38.624017° N
LONG: 90.132614° W

SN 082-0156
EB I-64 OVER
NS RAILROAD
LAT: 38.623656° N
LONG: 90.131247° W

SN 082-0158
EB I-64 OVER
TRRA RAILROAD
LAT: 38.623156° N
LONG: 90.129131° W

SN 082-0180
EB I-64 OVER
25TH ST.
LAT: 38.621922° N
LONG: 90.124106° W

GROSS LENGTH = 3,425.00 FT. = 0.649 MILE
NET LENGTH = 1,123.23 FT. = 0.212 MILE



WILLIAM J. SLEEMAN
12/19/24
062-048685
REGISTERED
PROFESSIONAL
ENGINEER
OF
ILLINOIS
WILLIAM J. SLEEMAN, P.E.
STATE OF ILLINOIS NO. 062-048685
EXPIRES 11/30/2025

STATE OF ILLINOIS
DEPARTMENT OF TRANSPORTATION

SUBMITTED Dec 19 20 24
Ken H...
REGIONAL ENGINEER

January 31 20 25
[Signature]
ENGINEER OF DESIGN AND EQUIPMENT

January 31 20 25
[Signature]
DIRECTOR OF HIGHWAYS PROJECT IMPLEMENTATION

PRINTED BY THE AUTHORITY
OF THE STATE OF ILLINOIS

INDEX OF SHEETS

1	COVER SHEET
2	INDEX OF SHEETS, HIGHWAY STANDARDS, GENERAL NORES, & COMMITMENTS
3	SUMMARY OF QUANTITIES
4-12	SUGGESTED STAGES OF CONSTRUCTION
13-22	STRUCTURE PLANS

HIGHWAY STANDARDS

000001-08	STANDARD SYMBOLS, ABBREVIATIONS, AND PATTERNS
001001-02	AREAS OF REINFORCEMENT BARS
001006	DECIMAL OF AN INCH AND OF A FOOT
701101-05	OFF-RD OPERATIONS, MULTILANE, 15' TO 24" FROM PAVEMENT EDGE
701106-02	OFF-RD OPERATIONS, MULTILANE, MORE THAN 15' AWAY
701400-12	APPROACH TO LANE CLOSURE, FREEWAY/EXPRESSWAY
701428-01	TRAFFIC CONTROL SETUP AND REMOVAL FREEWAY/EXPRESSWAY
701446-11	TWO LANE CLOSURE, FREEWAY/EXPRESSWAY
701451-05	RAMP CLOSURE FREEWAY/EXPRESSWAY
701601-09	URBAN LANE CLOSURE, MULTILANE, 1W OR 2W WITH NONTRAVERSABLE MEDIAN
701701-10	URBAN LANE CLOSURE MULTILANE INTERSECTION
701901-10	TRAFFIC CONTROL DEVICES

GENERAL NOTES

- UTILITIES KNOWN TO HAVE FACILITIES WITHIN THE PROJECT AREA:
 - AMEREN ILLINOIS (GAS & ELECTRIC)
 - AT&T ILLINOIS (COMMUNICATIONS)
 - CHARTER COMMUNICATIONS, INC. (CABLE TV)
 - CLEARWAVE FIBER LLC (COMMUNICATIONS)
 - CITY OF EAST ST. LOUIS (SANITARY SEWER)
 - ILLINOIS AMERICAN WATER COMPANY (WATER)
- NO SURVEY WAS PERFORMED FOR THIS PROJECT AND THE PLANS WERE CREATED USING MICROFILM AND FIELD MEASUREMENTS.
- THE RESIDENT ENGINEER SHALL VERIFY THE EXISTENCE OF HIGHWAY LIGHTING AND/OR INTELLIGENT TRANSPORTATION SYSTEMS (I.T.S) UTILITIES WITHIN THE PROJECT LIMITS. IF HIGHWAY LIGHTING AND/OR I.T.S EXISTS WITHIN THE PROJECT LIMITS, AND IF THESE ITEMS REQUIRE LOCATING, THE CONTRACTOR SHALL BE DIRECTED TO DO SO ACCORDING TO SECTION 803 OF THE STANDARD SPECIFICATIONS. THIS WORK SHALL BE PAID FOR ACCORDING TO ARTICLE 109.04 OF THE STANDARD SPECIFICATIONS.
- FOUR CHANGEABLE MESSAGE SIGNS SHALL BE REQUIRED FOR THIS PROJECT. THEY SHALL BE PLACED 2 WEEKS PRIOR TO ANY LANE OR ON RAMP CLOSURE AND SHALL REMAIN UP FOR THE DURATION OF THE PROJECT. THE CHANGEABLE MESSAGE SIGNS SHALL BE PLACED ALONG SB/WB 55/70 WEST OF IL 203, EB I-70 WEST OF PACKERS AVE., NB/EB I-55/64 WEST OF THE MLK MERGER, AND THE ON RAMP FROM ST. CLAIR AVE. TO EB I-64 OR AT THE DIRECTION OF THE ENGINEER. THE CHANGEABLE MESSAGE SIGNS REQUIRED TWO WEEKS PRIOR TO ANY LANE OR ON RAMP CLOSURE SHALL BE PAID FOR SEPARATELY. THE CHANGEABLE MESSAGE SIGNS REQUIRED FOR THE DURATION OF THE PROJECT SHALL NOT BE PAID FOR SEPARATELY BUT SHALL BE INCLUDED IN THE COST TRAFFIC CONTROL AND PROTECTION, (SPECIAL) AND NO ADDITIONAL COMPENSATION WILL BE ALLOWED.
- THE DEPARTMENT STRONGLY ENCOURAGES THE PRIME CONTRACTOR AND THEIR APPROVED SUB-CONTRACTORS TO HIRE MINORITY, WOMEN AND DISADVANTAGED INDIVIDUALS FROM ITS FEDERALLY FUNDED HIGHWAY CONSTRUCTION CAREERS TRAINING PROGRAM (HCCTP) TO HELP MEET WORKFORCE AND TRAINEE GOALS. THIS PROGRAM IS TRAINING MINORITIES, WOMEN AND DISADVANTAGED INDIVIDUALS IN HIGHWAY CONSTRUCTION-RELATED SKILLS, E.G., MATH FOR THE TRADES, JOB READINESS, TECHNICAL SKILLS COURSEWORK (CARPENTRY, CONCRETE FLATWORK, BLUEPRINT READING, SITE WORK, TOOLS USE, ETC.) AND OSHA 10 HOUR CERTIFICATION, TO PREPARE THEM FOR A CAREER IN THE HIGHWAY CONSTRUCTION TRADES. GRADUATES ARE WELL-TRAINED AND READY TO BECOME PRODUCTIVE ENTRY-LEVEL CONSTRUCTION WORKERS. CONTACT THE DISTRICT 8 EEO OFFICE AT 618-346-3360 AND/OR THE HCCTP COORDINATOR AT 618-874-6528 TO LEARN MORE ABOUT THE PROGRAM AND FOR ASSISTANCE IN MEETING WORKFORCE AND TRAINEE GOALS.
- ALL TURF AREAS DISTURBED BY THE CONTRACTOR SHAL BE SEEDED WITH THE APPROPRIATE EROSION CONTROL, AS DIRECTED BY THE ENGINEER, AT THE CONTRACTOR'S EXPENSE.

COMMITMENTS

NONE

STATE OF ILLINOIS
DEPARTMENT OF TRANSPORTATION

INDEX OF SHEETS, HIGHWAY STANDARDS,
GENERAL NOTES, & COMMITMENTS

SCALE: SHEET 1 OF 1 SHEETS STA. TO STA.

F.A.I RTE.	SECTION	COUNTY	TOTAL SHEETS	SHEET NO.
64	82-(1,2)BDR	ST. CLAIR	22	2
CONTRACT NO. 76U17				
ILLINOIS FED. AID PROJECT				

MODEL: GENERAL NOTES (Sheet)
FILE NAME: P:\19E3340-9 (76U17 FAI 64)\Section 82-(1,2)BDR\CADD Sheets\0876U17-shh-gemnote.dgn

BA
BENTON & ASSOCIATES, INC.
CONSULTING ENGINEERS / LAND SURVEYORS
1970 WEST LAFAYETTE AVE.
JACKSONVILLE, IL 62501
PHONE: 217-265-4149 FAX: 217-265-4149
IL DESIGN FIRM REGISTRATION NO. 184-009652

USER NAME = wsteerman	DESIGNED - DSR	REVISED - ####
	DRAWN - DSR	REVISED - ####
	CHECKED - WJS	REVISED - ####
PLOT DATE = 12/11/2024	DATE - ####	REVISED - ####

CODE NO.	ITEM	UNIT	TOTAL QUANTITY	CONSTRUCTION CODE				
				BRIDGE	BRIDGE	BRIDGE	BRIDGE	BRIDGE
				0047	0047	0047	0047	0047
100% STATE				S.N. 082-0152	S.N. 082-0155	S.N. 082-0156	S.N. 082-0158	S.N. 082-0160
50157300	PROTECTIVE SHIELD	SQ YD	309			170	146	93
50300300	PROTECTIVE COAT	SQ YD	827	80	110	309	117	211
67000400	ENGINEER'S FIELD OFFICE, TYPE A	CAL MO	3	3				
67100100	MOBILIZATION	L SUM	1	0.2	0.2	0.2	0.2	0.2
70107025	CHANGEABLE MESSAGE SIGN	CAL DA	56	56				
70200100	NIGHTTIME WORK ZONE LIGHTING	L SUM	1	0.2	0.2	0.2	0.2	0.2
X7010001	MOBILE BARRIER TRAILER	L SUM	1	0.2	0.2	0.2	0.2	0.2
X7010216	TRAFFIC CONTROL AND PROTECTION, (SPECIAL)	L SUM	1	0.2	0.2	0.2	0.2	0.2
Z0016002	DECK SLAB REPAIR (FULL DEPTH, TYPE II)	SQ YD	121			67	19	35
Z0016200	DECK SLAB REPAIR (PARTIAL)	SQ YD	706	80	110	242	98	176

* DENOTES SPECIALTY ITEM

MODEL: SQO (Sheet)
FILE NAME: P:\19E3340-9 (76U17 FAI B4)\Section 82-(1,2)BDR\CADD Sheets\82U17-shr-SQO.dgn



USER NAME = wsleeman
PLOT DATE = 12/19/2024

DESIGNED - DSR
DRAWN - DSR
CHECKED - WJS
DATE - ####

REVISED - ####
REVISED - ####
REVISED - ####
REVISED - ####

STATE OF ILLINOIS
DEPARTMENT OF TRANSPORTATION

SUMMARY OF QUANTITIES

SCALE: SHEET 1 OF 1 SHEETS STA. TO STA.

F.A.I. RTE.	SECTION	COUNTY	TOTAL SHEETS	SHEET NO.
64	82-(1,2)BDR	ST. CLAIR	22	3
CONTRACT NO. 76U17				
ILLINOIS FED. AID PROJECT				

REV - MS

LEGEND

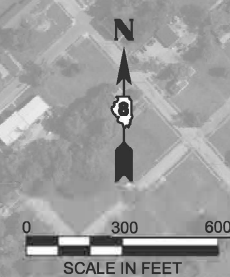
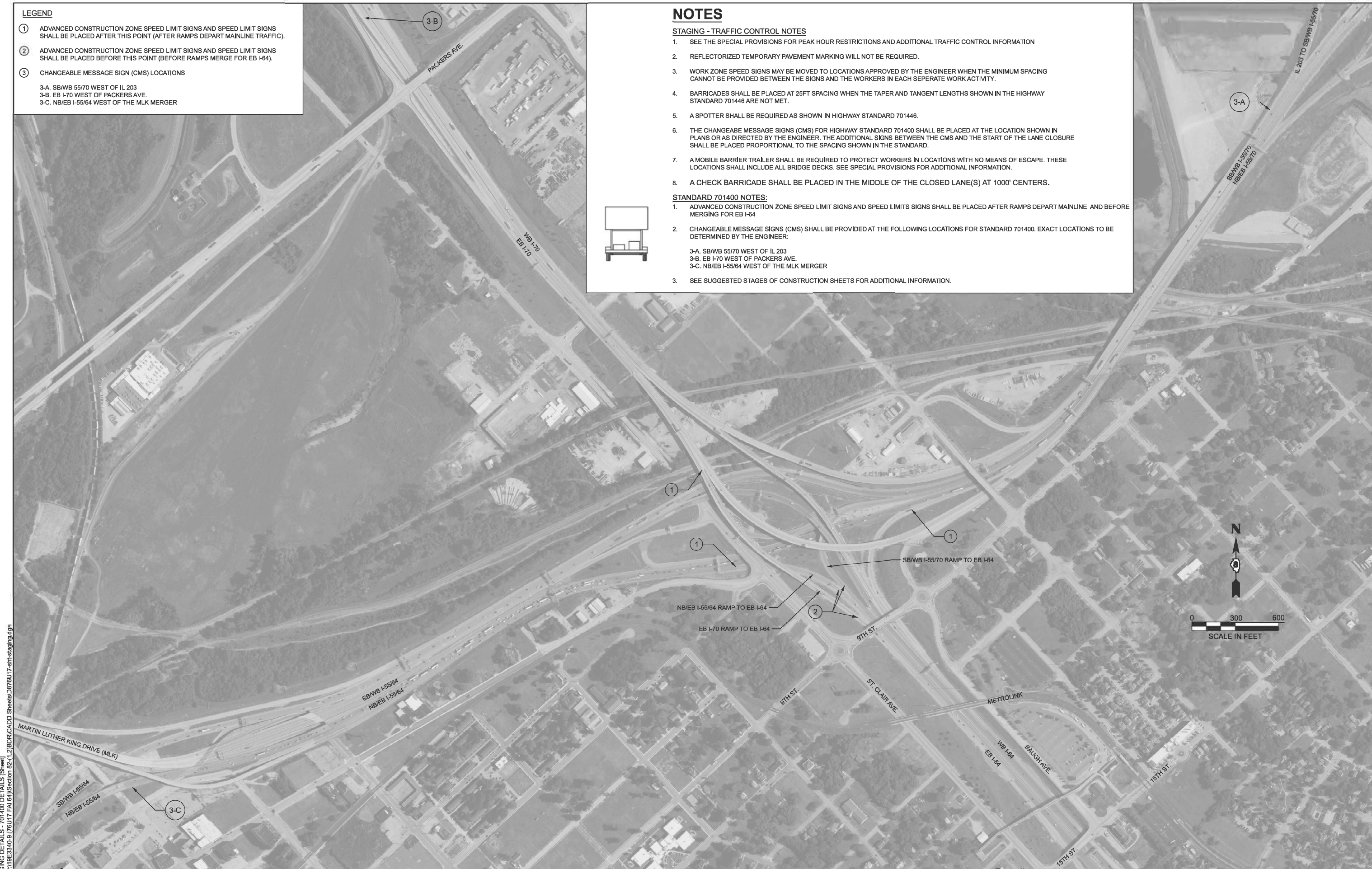
- ① ADVANCED CONSTRUCTION ZONE SPEED LIMIT SIGNS AND SPEED LIMIT SIGNS SHALL BE PLACED AFTER THIS POINT (AFTER RAMPS DEPART MAINLINE TRAFFIC).
 - ② ADVANCED CONSTRUCTION ZONE SPEED LIMIT SIGNS AND SPEED LIMIT SIGNS SHALL BE PLACED BEFORE THIS POINT (BEFORE RAMPS MERGE FOR EB I-64).
 - ③ CHANGEABLE MESSAGE SIGN (CMS) LOCATIONS
- 3-A. SB/WB 55/70 WEST OF IL 203
 3-B. EB I-70 WEST OF PACKERS AVE.
 3-C. NB/EB I-55/64 WEST OF THE MLK MERGER

NOTES

- STAGING - TRAFFIC CONTROL NOTES**
1. SEE THE SPECIAL PROVISIONS FOR PEAK HOUR RESTRICTIONS AND ADDITIONAL TRAFFIC CONTROL INFORMATION
 2. REFLECTORIZED TEMPORARY PAVEMENT MARKING WILL NOT BE REQUIRED.
 3. WORK ZONE SPEED SIGNS MAY BE MOVED TO LOCATIONS APPROVED BY THE ENGINEER WHEN THE MINIMUM SPACING CANNOT BE PROVIDED BETWEEN THE SIGNS AND THE WORKERS IN EACH SEPERATE WORK ACTIVITY.
 4. BARRICADES SHALL BE PLACED AT 25FT SPACING WHEN THE TAPER AND TANGENT LENGTHS SHOWN IN THE HIGHWAY STANDARD 701446 ARE NOT MET.
 5. A SPOTTER SHALL BE REQUIRED AS SHOWN IN HIGHWAY STANDARD 701446.
 6. THE CHANGEABLE MESSAGE SIGNS (CMS) FOR HIGHWAY STANDARD 701400 SHALL BE PLACED AT THE LOCATION SHOWN IN PLANS OR AS DIRECTED BY THE ENGINEER. THE ADDITIONAL SIGNS BETWEEN THE CMS AND THE START OF THE LANE CLOSURE SHALL BE PLACED PROPORTIONAL TO THE SPACING SHOWN IN THE STANDARD.
 7. A MOBILE BARRIER TRAILER SHALL BE REQUIRED TO PROTECT WORKERS IN LOCATIONS WITH NO MEANS OF ESCAPE. THESE LOCATIONS SHALL INCLUDE ALL BRIDGE DECKS. SEE SPECIAL PROVISIONS FOR ADDITIONAL INFORMATION.
 8. A CHECK BARRICADE SHALL BE PLACED IN THE MIDDLE OF THE CLOSED LANE(S) AT 1000' CENTERS.



- STANDARD 701400 NOTES:**
1. ADVANCED CONSTRUCTION ZONE SPEED LIMIT SIGNS AND SPEED LIMITS SIGNS SHALL BE PLACED AFTER RAMPS DEPART MAINLINE AND BEFORE MERGING FOR EB I-64
 2. CHANGEABLE MESSAGE SIGNS (CMS) SHALL BE PROVIDED AT THE FOLLOWING LOCATIONS FOR STANDARD 701400. EXACT LOCATIONS TO BE DETERMINED BY THE ENGINEER:
 - 3-A. SB/WB 55/70 WEST OF IL 203
 - 3-B. EB I-70 WEST OF PACKERS AVE.
 - 3-C. NB/EB I-55/64 WEST OF THE MLK MERGER
 3. SEE SUGGESTED STAGES OF CONSTRUCTION SHEETS FOR ADDITIONAL INFORMATION.



MODEL - STAGING DETAILS - 701400 DETAILS (Sheet)
 FILE NAME: P:\19E3300-9 (76U17 FAI 84)\Section B2-(1,2)BDR\CADD Sheets\0676U17_sht-staging.dgn

BA BENTON & ASSOCIATES, INC.
 CONSULTING ENGINEERS / LAND SURVEYORS
 1970 WEST LAUREL TRL AVE.
 JACKSONVILLE, IL 62650
 PHONE: 217-245-4146 FAX: 217-245-4148
 IL DESIGN FIRM REGISTRATION NO. 194-000852

USER NAME = wsberman	DESIGNED - DSR	REVISED - ####
	DRAWN - DSR	REVISED - ####
	CHECKED - WJS	REVISED - ####
PLOT DATE = 12/19/2024	DATE - ####	REVISED - ####

**STATE OF ILLINOIS
 DEPARTMENT OF TRANSPORTATION**

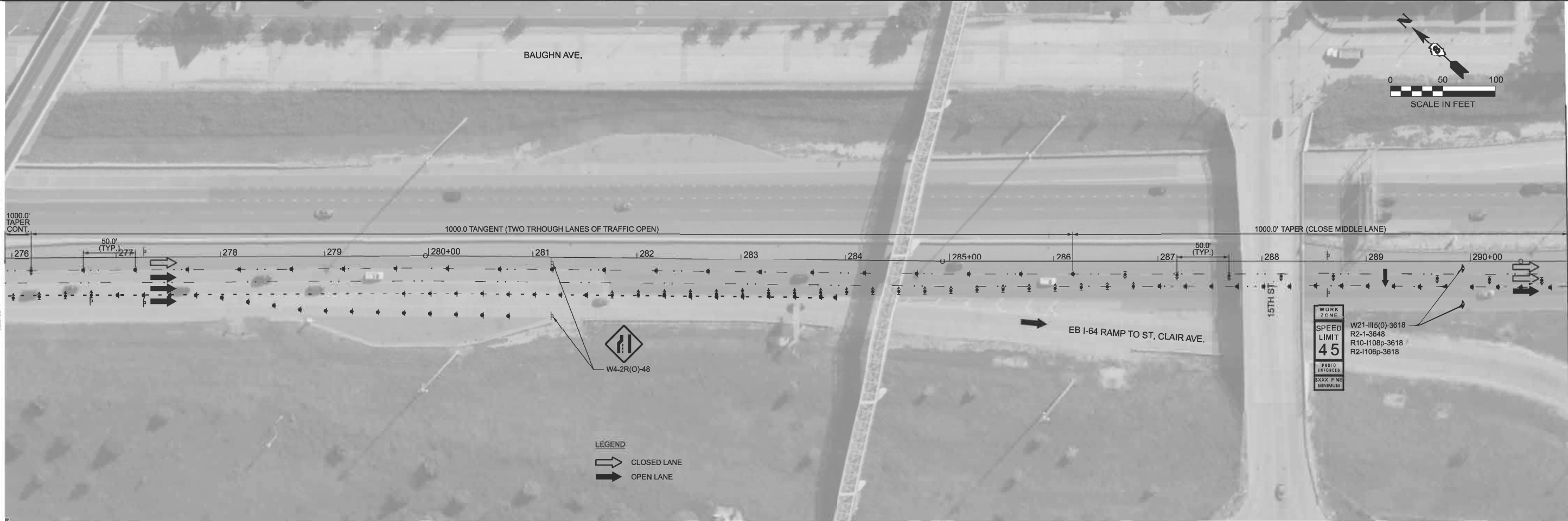
**SUGGESTED STAGES OF CONSTRUCTION
 STANDARD 701400 DETAILS**

SCALE: SHEET 2 OF 9 SHEETS STA. TO STA.

F.A.I. RTE.	SECTION	COUNTY	TOTAL SHEETS	SHEET NO.
64	82-(1,2)BDR	ST. CLAIR	22	4
CONTRACT NO. 76U17				
ILLINOIS FED. AID PROJECT				



MATCHLINE STA. 276+00.00



MATCHLINE STA. 291+00.00

MODEL: Exh1_I64 - Stage 1 TC (Sheet)
 FILE NAME: P:\19E3300-9 (76U17 FAI B4)\Section 82-1\2\BDR\CADD Sheets\0876U17_sht-staging.dgn

BA BENTON & ASSOCIATES, INC.
 CONSULTING ENGINEERS / LAND SURVEYORS
 1970 WEST LAFAYETTE AVE.
 JACKSONVILLE, IL 62650
 PHONE: 217-245-4146 FAX: 217-245-4148
 IL DESIGN FIRM REGISTRATION NO. 184-000892

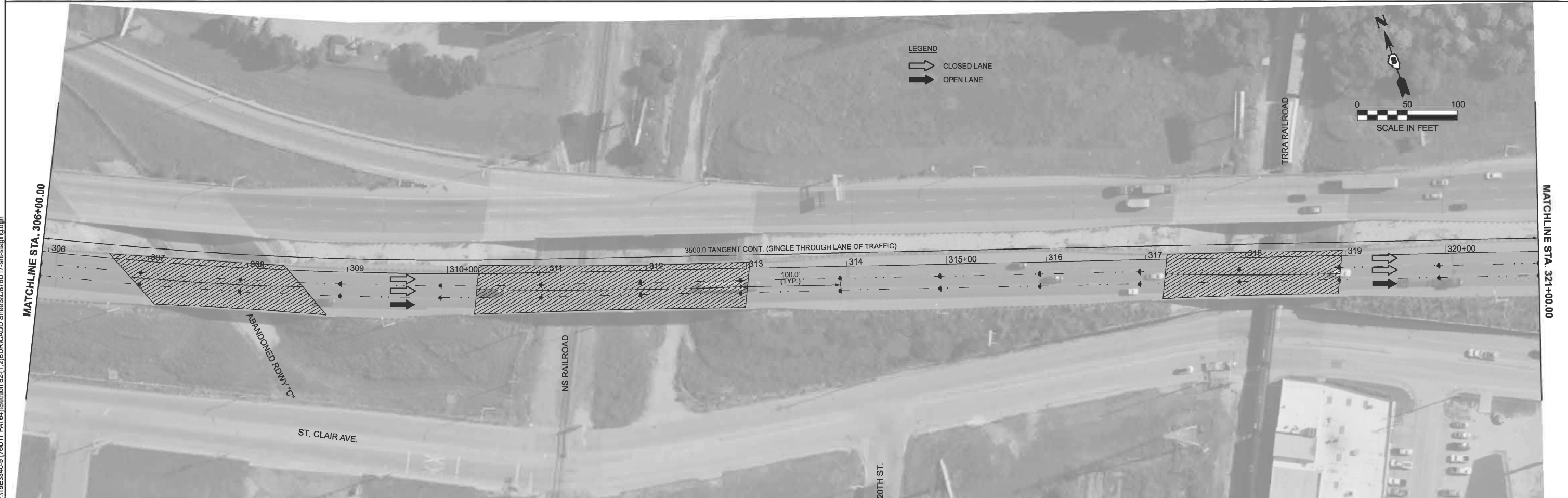
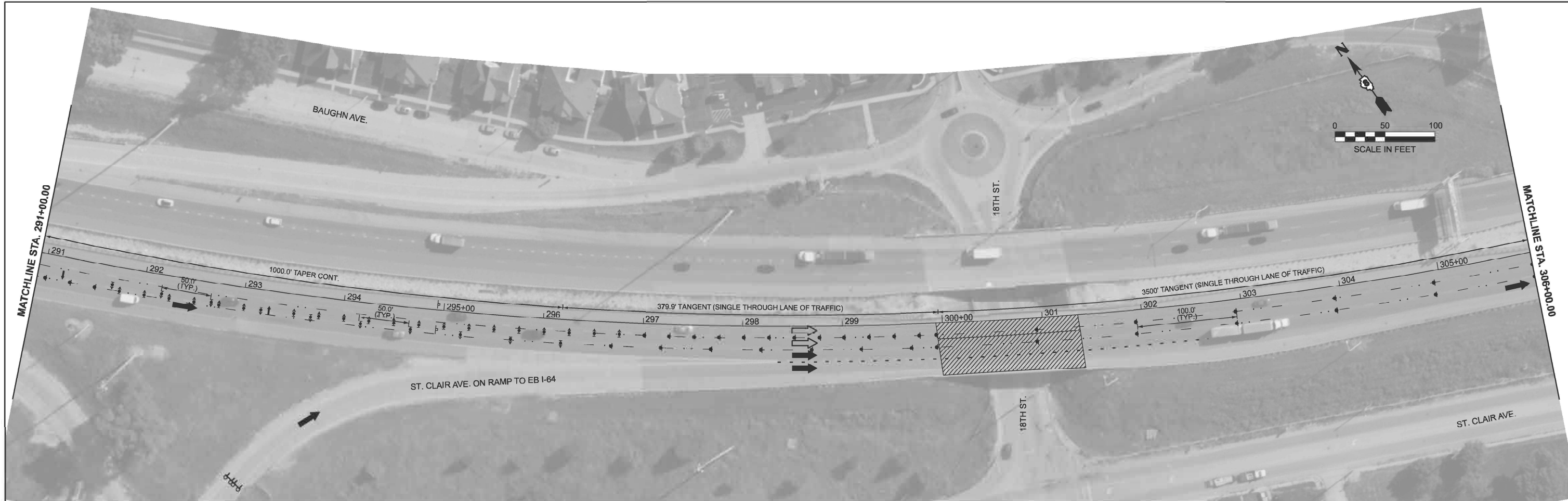
USER NAME = wsleeman	DESIGNED - DSR	REVISED - ####
	DRAWN - DSR	REVISED - ####
	CHECKED - WJS	REVISED - ####
PLOT DATE = 12/19/2024	DATE - ####	REVISED - ####

**STATE OF ILLINOIS
 DEPARTMENT OF TRANSPORTATION**

**SUGGESTED STAGES OF CONSTRUCTION
 STAGE 1 DETAILS**

SCALE: 1"=50' SHEET 3 OF 9 SHEETS STA. 261+00.00 TO STA. 291+00.00

F A I RTE.	SECTION	COUNTY	TOTAL SHEETS	SHEET NO.
64	82-(1,2)BDR	ST. CLAIR	22	5
CONTRACT NO. 76U17				
ILLINOIS FED. AID PROJECT				



MODEL: EXRL_I64 - Stage 1 TC-2 (Sheet)
 FILE NAME: P:\19E3300-9 (76U17 FAI 64)\Section 82-1 (2)BDR\CADD Sheets\0876U17_sht-staging.dgn

BA BENTON & ASSOCIATES, INC.
 CONSULTING ENGINEERS / LAND SURVEYORS
 1970 WEST LAFAYETTE AVE.
 JACKSONVILLE, IL 62650
 PHONE: 217-245-4146 FAX: 217-245-4148
 IL DESIGN FIRM REGISTRATION NO. 184-000892

USER NAME = wsleeman	DESIGNED - DSR	REVISED - ####
	DRAWN - DSR	REVISED - ####
	CHECKED - WJS	REVISED - ####
PLOT DATE = 12/19/2024	DATE - ####	REVISED - ####

**STATE OF ILLINOIS
 DEPARTMENT OF TRANSPORTATION**

**SUGGESTED STAGES OF CONSTRUCTION
 STAGE 1 DETAILS**

SCALE: 1"=50' SHEET 4 OF 9 SHEETS STA. 291+00.00 TO STA. 321+00.00

F A I RTE.	SECTION	COUNTY	TOTAL SHEETS	SHEET NO.
64	82-(1,2)BDR	ST. CLAIR	22	6
CONTRACT NO. 76U17				
ILLINOIS FED. AID PROJECT				



MODEL: ExRL_I64 - Stage 1 TC-4 (Sheet)
 FILE NAME: P:\19E3300-9 (76117 FAI 64)\Section 82(1,2)BDR\CADD_Sheets\0676117_sht-stage1.dgn

BA BENTON & ASSOCIATES, INC.
 CONSULTING ENGINEERS / LAND SURVEYORS
 1970 WEST LAUREL AVE.
 JACKSONVILLE, IL 62650
 PHONE 217-245-4146 FAX 217-245-4148
 IL DESIGN FIRM REGISTRATION NO. 194-000852

USER NAME =	wslleman
PLOT DATE =	12/19/2024

DESIGNED -	DSR	REVISED -	####
DRAWN -	DSR	REVISED -	####
CHECKED -	WJS	REVISED -	####
DATE -	####	REVISED -	####

LEGEND
 CLOSED LANE
 OPEN LANE

**STATE OF ILLINOIS
 DEPARTMENT OF TRANSPORTATION**

SUGGESTED STAGES OF CONSTRUCTION
STAGE 1 DETAILS

SCALE: 1"=50'	SHEET 5	OF 9 SHEETS	STA. 321+00.00	TO STA. 351+00.00
---------------	---------	-------------	----------------	-------------------

F.A.I. RTE.	SECTION	COUNTY	TOTAL SHEETS	SHEET NO.
64	82-(1,2)BDR	ST. CLAIR	22	7
CONTRACT NO. 76U17				
ILLINOIS FED. AID PROJECT				



MATCHLINE STA. 276+00.00



MATCHLINE STA. 291+00.00

MODEL: EXRL_165 - Stage 2 TC (Sheet)
 FILE NAME: P:\19E3300-9 (76U17 FAI B4)\Section 82-1.2\BDR\CADD Sheets\DR76U17_sht-stage2.dgn

BA BENTON & ASSOCIATES, INC.
 CONSULTING ENGINEERS / LAND SURVEYORS
 1970 WEST LAUREL AVE.
 JACKSONVILLE, IL 62550
 PHONE: 217-245-1146 FAX: 217-245-4148
 IL DESIGN FIRM REGISTRATION NO. 184-000682

USER NAME = wsleeman
 PLOT DATE = 12/19/2024

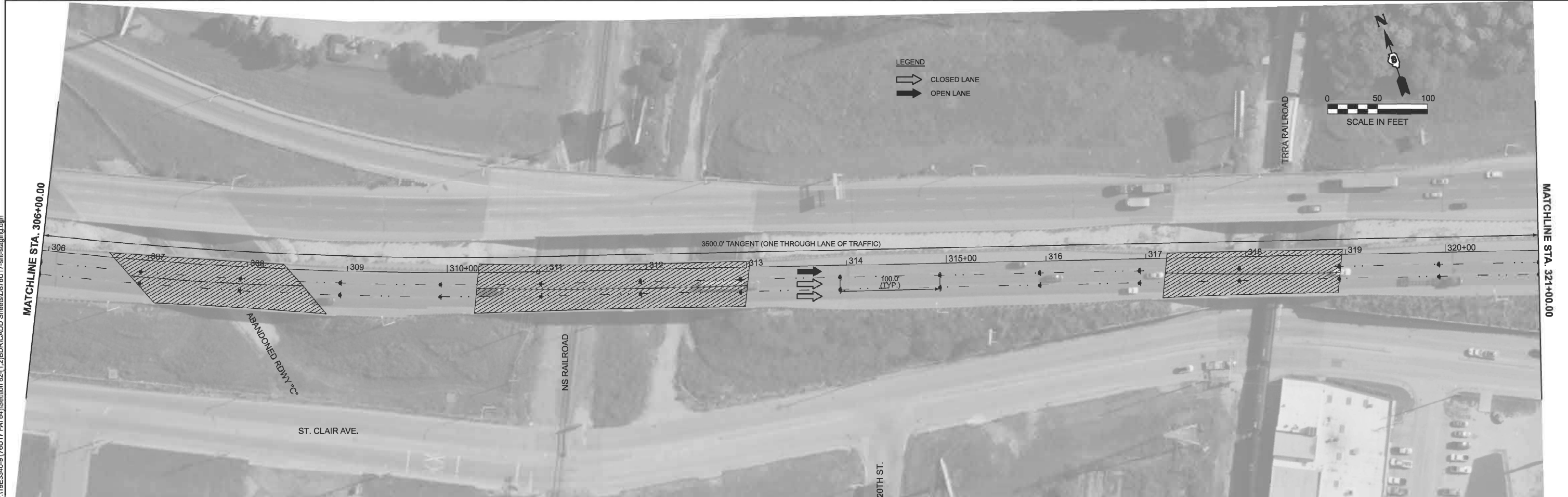
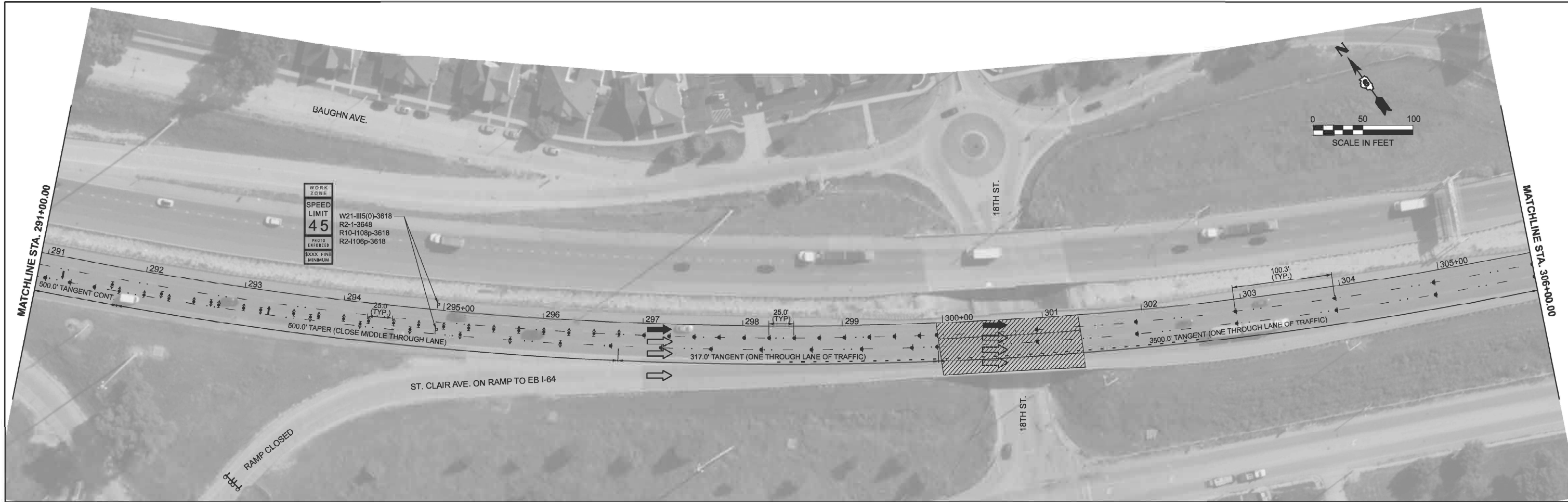
DESIGNED - DSR
 DRAWN - DSR
 CHECKED - WJS
 DATE - ####

REVISED - ####
 REVISED - ####
 REVISED - ####
 REVISED - ####

**STATE OF ILLINOIS
 DEPARTMENT OF TRANSPORTATION**

**SUGGESTED STAGES OF CONSTRUCTION
 STAGE 2 DETAILS**
 SCALE: 1"=50'
 SHEET 6 OF 9 SHEETS
 STA. 261+00.00 TO STA. 291+00.00

F.A.I. RTE.	SECTION	COUNTY	TOTAL SHEETS	SHEET NO.
64	82-(1,2)BDR	ST. CLAIR	22	8
CONTRACT NO. 76U17				
ILLINOIS FED. AID PROJECT				



MODEL: EXRL_165 - Stage 2 TC-2 (Sheet)
 FILE NAME: P:\19E3300-9 (76U17 FAI 64)\Section 82-1 (2)\BDRICADD Sheets\0676U17_sht-staging.dgn

BA BENTON & ASSOCIATES, INC.
 CONSULTING ENGINEERS / LAND SURVEYORS
 1970 WEST LAFAYETTE AVE.
 JACKSONVILLE, IL 62650
 PHONE: 217-245-4146 FAX: 217-245-4148
 IL DESIGN FIRM REGISTRATION NO. 184-000952

USER NAME = wsleeman	DESIGNED - DSR	REVISED - ####
	DRAWN - DSR	REVISED - ####
	CHECKED - WJS	REVISED - ####
PLOT DATE = 12/19/2024	DATE - ####	REVISED - ####

**STATE OF ILLINOIS
 DEPARTMENT OF TRANSPORTATION**

**SUGGESTED STAGES OF CONSTRUCTION
 STAGE 2 DETAILS**

SCALE: 1"=50' SHEET 7 OF 9 SHEETS STA. 291+00.00 TO STA. 321+00.00

F A I RTE.	SECTION	COUNTY	TOTAL SHEETS	SHEET NO.
64	82-(1,2)BDR	ST. CLAIR	22	9
CONTRACT NO. 76U17				
ILLINOIS FED. AID PROJECT				



MODEL: EXBL_185 - Stage 2 TC-4 (Sheet)
 FILE NAME: P:\19E3300-8 (76117 FAI 64)\Section 82-1(2)BDR\CADD_Sheets\0676117_sht-stage2.dgn

BA BENTON & ASSOCIATES, INC.
 CONSULTING ENGINEERS / LAND SURVEYORS
 1970 WEST LAFAYETTE AVE.
 JACKSONVILLE, IL 62650
 PHONE: 217-245-4146 FAX: 217-245-4148
 IL DESIGN FIRM REGISTRATION NO. 184-000852

USER NAME = wsleeman	DESIGNED - DSR	REVISED - ####
	DRAWN - DSR	REVISED - ####
	CHECKED - WJS	REVISED - ####
PLOT DATE = 12/19/2024	DATE - ####	REVISED - ####

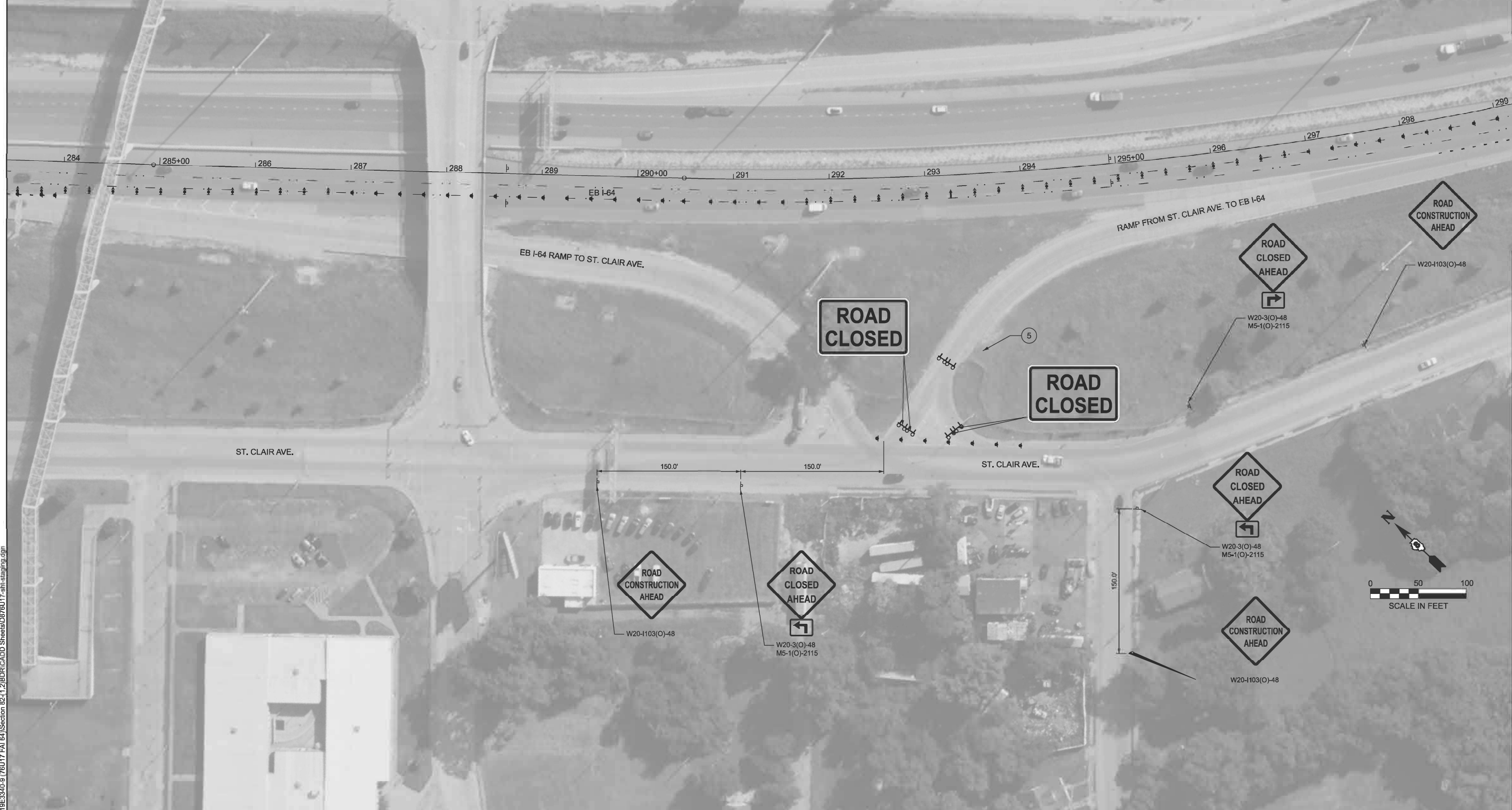
STATE OF ILLINOIS
DEPARTMENT OF TRANSPORTATION

SUGGESTED STAGES OF CONSTRUCTION			
STAGE 2 DETAILS			
SCALE: 1"=50'	SHEET 8	OF 9 SHEETS	STA. 321+00.00 TO STA. 351+00.00

F.A.I. RTE.	SECTION	COUNTY	TOTAL SHEETS	SHEET NO.
64	82-(1,2)BDR	ST. CLAIR	22	10
CONTRACT NO. 76U17				
ILLINOIS FED. AID PROJECT				

NOTES:

- RAMP CLOSURE PER STANDARD 701451 EXCEPT AS MODIFIED HEREIN OR AS DIRECTED BY THE ENGINEER.
- SEE STANDARD 701451 FOR ADDITIONAL INFORMATION.
- SIGN SPACING AS SHOWN BELOW OR AS DIRECTED BY THE ENGINEER. ALL OTHER SIGN SPACING AS SHOWN IN STANDARD 701451.
- SEE STAGING DETAILS (STAGE 2) FOR MAINLINE EB I-64 TRAFFIC CONTROL DETAILS.
- ONE CHANGEABLE MESSAGE SIGN SHALL BE PLACED 2 WEEKS PRIOR TO THE FIRST CLOSURE OF ST. CLAIR AVE. ON RAMP AND SHALL REMAIN IN PLACE UNTIL ALL ON RAMP CLOSURES ARE COMPLETED. THE CHANGEABLE MESSAGE SIGNS SHALL BE PLACED AT THE ON RAMP OR AT THE DIRECTION OF THE ENGINEER.



MODEL: STAGING DETAILS - ST. CLAIR CLOSURE (Sheet)
 FILE NAME: P:\19E3340-9 (76U17 FAI #4)\Section 82-1,2\BDR\CADD Sheets\0876U17_4shk-staging.dgn

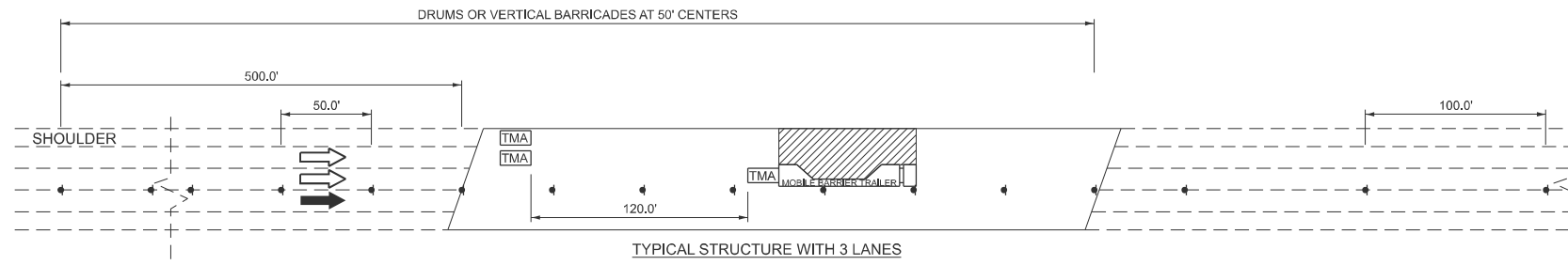
BENTON & ASSOCIATES, INC. CONSULTING ENGINEERS / LAND SURVEYORS 1970 WEST LAUREL AVE. JACKSONVILLE, IL 62650 PHONE: 217-245-4146 FAX: 217-245-4148 IL DESIGN FIRM REGISTRATION NO. 194-00882	USER NAME = wfoeman	DESIGNED - DSR	REVISED - ####
		DRAWN - ####	REVISED - ####
		CHECKED - WJS	REVISED - ####
	PLOT DATE = 12/19/2024	DATE - ####	REVISED - ####

STATE OF ILLINOIS
DEPARTMENT OF TRANSPORTATION

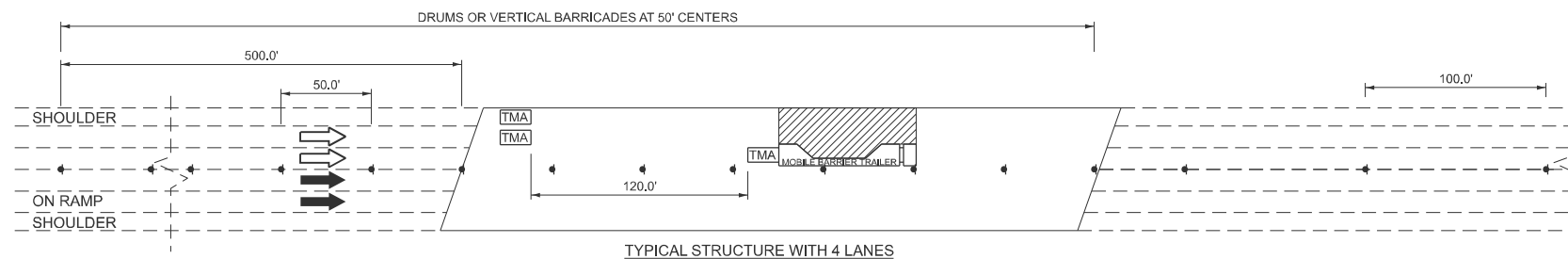
SUGGESTED STAGES OF CONSTRUCTION
STAGE 2 - RAMP CLOSURE (ST. CLAIR AVE)

SCALE: SHEET 9 OF 9 SHEETS STA. TO STA.

FAI RTE.	SECTION	COUNTY	TOTAL SHEETS	SHEET NO.
64	82-(1,2)BDR	ST. CLAIR	22	11
CONTRACT NO. 76U17				
ILLINOIS FED. AID PROJECT				



TYPICAL STRUCTURE WITH 3 LANES



TYPICAL STRUCTURE WITH 4 LANES

STAGE 1 MOBILE BARRIER DETAILS

NOTES:

THIS DETAIL SHALL BE USED WHERE AT ANY TIME ANY VEHICLE, EQUIPMENT, WORKERS OR THEIR ACTIVITIES WILL ENCROACH ON THE LANE ADJACENT TO THE SHOULDER, OR ON THE SHOULDER WITHIN 2' OF THE EDGE OF PAVEMENT AT LOCATIONS WITH NO MEANS OF ESCAPE.

LOCATIONS WITH NO MEANS OF ESCAPE SHALL INCLUDE THE BRIDGE DECKS OF SN 082-0152, 082-0155, 082-0156, 082-0158 AND 082-0160 AND OTHER LOCATIONS AS DETERMINED BY THE ENGINEER.





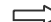

THIS DETAIL MUST BE USED IN COMBINATION WITH STANDARDS 701400, 701446, AND THE PLAN DETAILS.

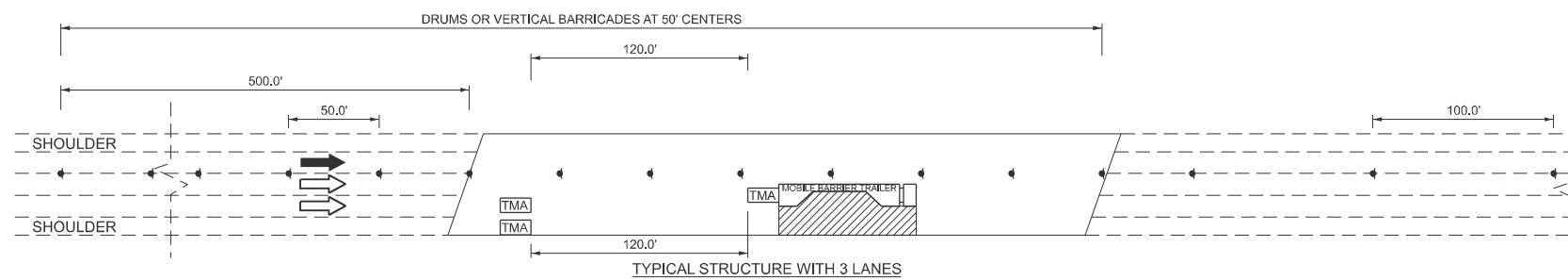
THE EDGE OF THE MOBILE BARRIER TRAILER SHALL NOT CROSS THE EDGELINE OF THE ADJACENT OPEN LANE(S).

TRUCK/TRAILER MOUNTED ATTENUATORS (TMA) (TL-3) SHALL BE PLACED 120FT BEFORE THE MOBILE BARRIER TRAILER TMA. A TMA SHALL BE REQUIRED IN ALL CLOSED LANES TO PROTECT WORKERS IN A LOCATION WITH NO MEANS OF ESCAPE.

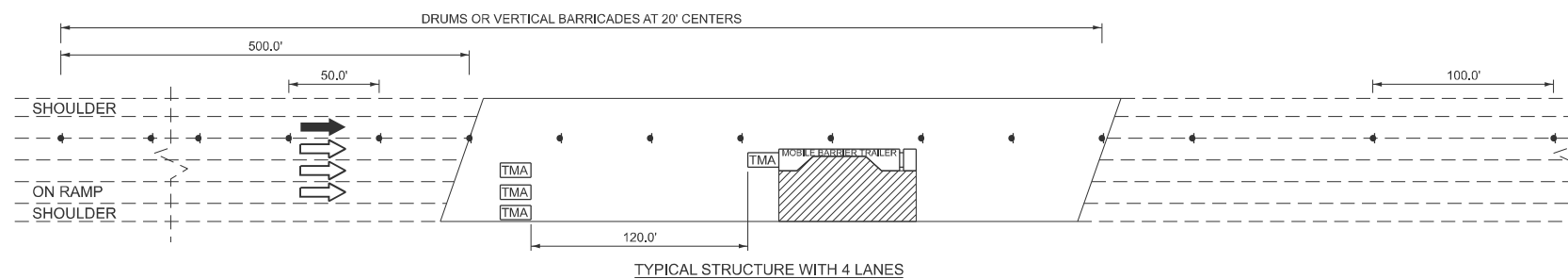
LOCATION OF MOBILE BARRIER TRAILER VARIES ALONG THE STRUCTURES WITHIN THE CLOSED LANES.

LEGEND

-  TRUCK/TRAILER MOUNTED ATTENUATOR (TL-3)
-  MOBILE BARRIER TRAILER
-  DRUM OR VERTICAL BARRICADE WITH STEADY BURN MOMODIRECTIONAL LIGHT
-  WORK AREA (WITHIN MOBILE BARRIER TRAILER)
-  CLOSED LANE
-  OPEN LANE



TYPICAL STRUCTURE WITH 3 LANES



TYPICAL STRUCTURE WITH 4 LANES

STAGE 2 MOBILE BARRIER DETAILS

MODEL: STAGING DETAILS - MOBILE BARRIER (Sheet) FILE NAME: P:\19E3340-9 (76U17 FAI 6A)\Section 82-1.2\BDR\CADD Sheets\82U17-shh-staging.dgn

BA
 BENTON & ASSOCIATES, INC.
 CONSULTING ENGINEERS / LAND SURVEYORS
 1970 WEST LAFAYETTE AVE.
 JACKSONVILLE, IL 62659
 PHONE: 217-265-4149 FAX: 217-265-4149
 IL DESIGN FIRM REGISTRATION NO. 184-009852

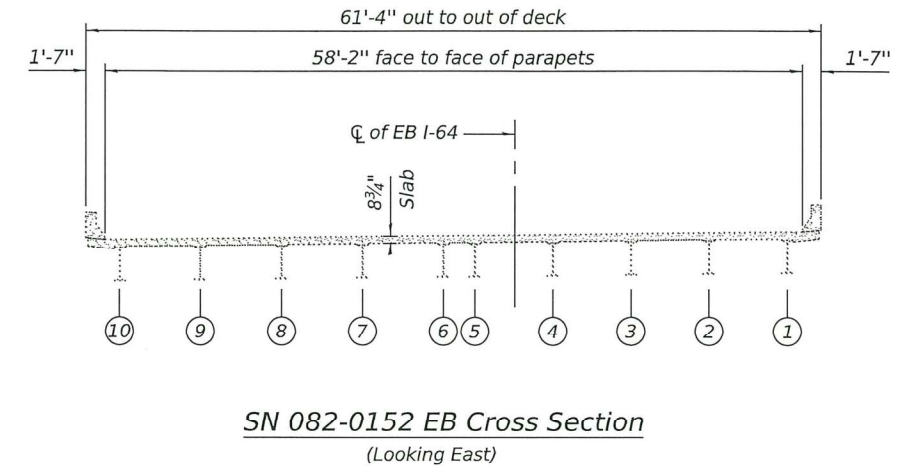
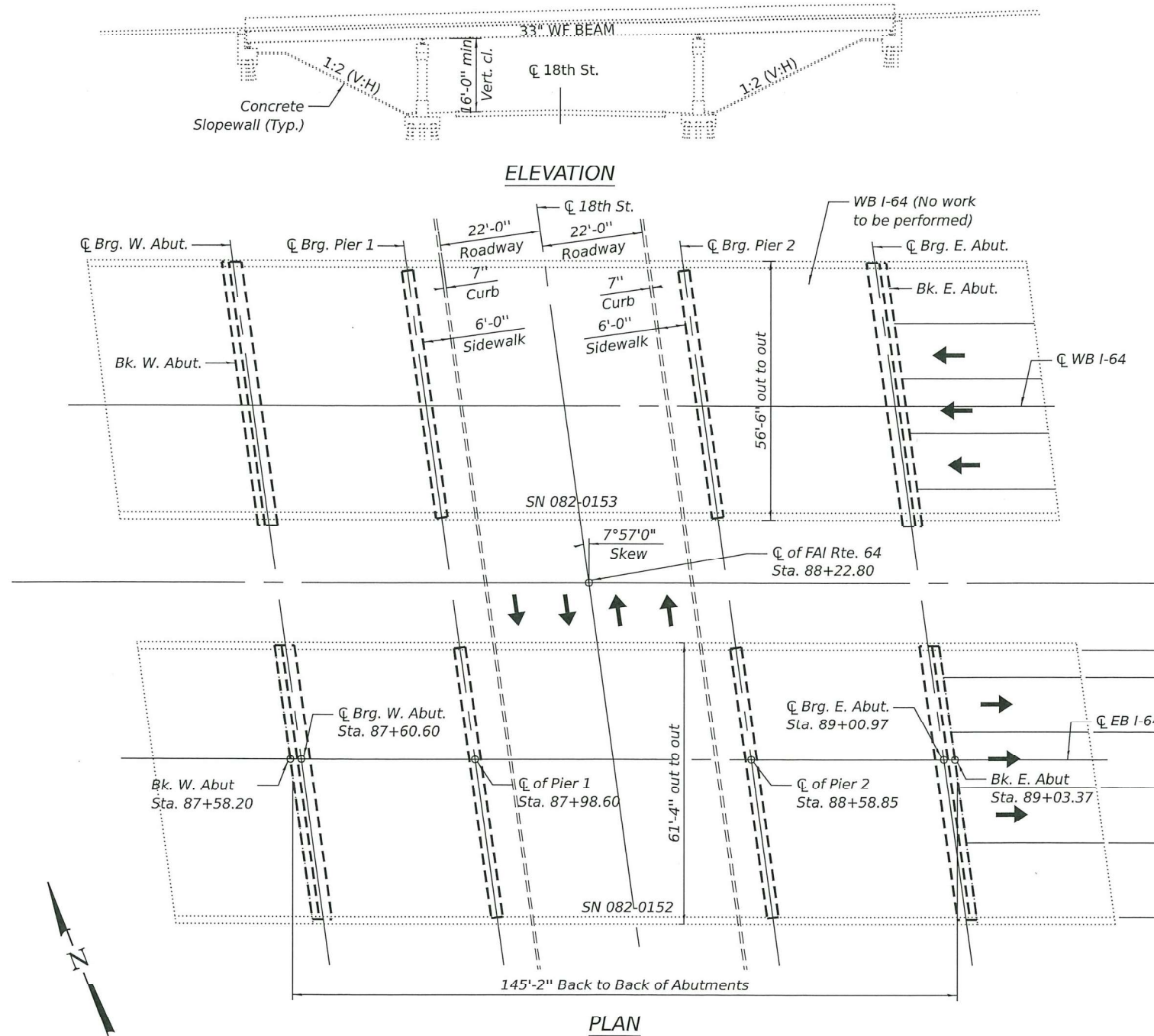
USER NAME = wsteeman	DESIGNED - DSR	REVISED - ####
	DRAWN - DSR	REVISED - ####
	CHECKED - WJS	REVISED - ####
PLOT DATE = 12/11/2024	DATE - ####	REVISED - ####

STATE OF ILLINOIS
 DEPARTMENT OF TRANSPORTATION

SUGGESTED STAGES OF CONSTRUCTION
 MOBILE BARRIER DETAILS

SCALE: SHEET 10 OF 9 SHEETS STA. TO STA.

F.A.I. RTE.	SECTION	COUNTY	TOTAL SHEETS	SHEET NO.
64	82-(1.2)BDR	ST. CLAIR	22	12
CONTRACT NO. 76U17				
ILLINOIS FED. AID PROJECT				



Notes:

Prior to pouring the new concrete patches, all heavy or loose rust, loose mill scale, and other loose detrimental foreign material shall be removed from the surfaces in contact with concrete (SSPC - SP3 standards). Tightly adhered paint may remain unless otherwise noted. Removal shall be accomplished by methods that will not damage the steel and the cost will be paid for according to Article 109.04 of the Standard Specifications.

Plan dimensions and details relative to the existing structure have been taken from existing plans are subject to nominal construction variations. The Contractor shall field verify existing dimensions and details affecting new construction and make necessary approved adjustments prior to construction or ordering of materials. Such variations shall not be cause for additional compensation for a change in scope of the work, however, the Contractor will be paid for the quantity actually furnished at the unit price bid for the work.

Existing reinforcement shall be cleaned, straightened and incorporated into the new construction. Cost included with Concrete Removal.

Protective coat shall be applied to new concrete only.



TOTAL BILL OF MATERIAL

	Unit	Total
Deck Slab Repair (Partial)	Sq. Yd.	80
Protective Coat	Sq. Yd.	80

MODEL: Sheet 1
FILE NAME: P:\1983940-8176U17 164 Bridge Deck Repairs\CADD Sheets\1816U17 - 0820152 164 EB over 18th St - Bridge Plan and Elevation.dgn

RA BENTON & ASSOCIATES, INC.
 2725 N. Lafayette Ave., Suite 200, Chicago, IL 60647
 (773) 745-4444 (312) 295-4444 Fax
 BENTON & ASSOCIATES, INC. Professional Seal No. 081-000252

USER NAME =	DESIGNED CML	REVISED -
PLOT SCALE =	CHECKED MBH	REVISED -
PLOT DATE = 12/11/24	DRAWN CML	REVISED -
	CHECKED MBH	REVISED -

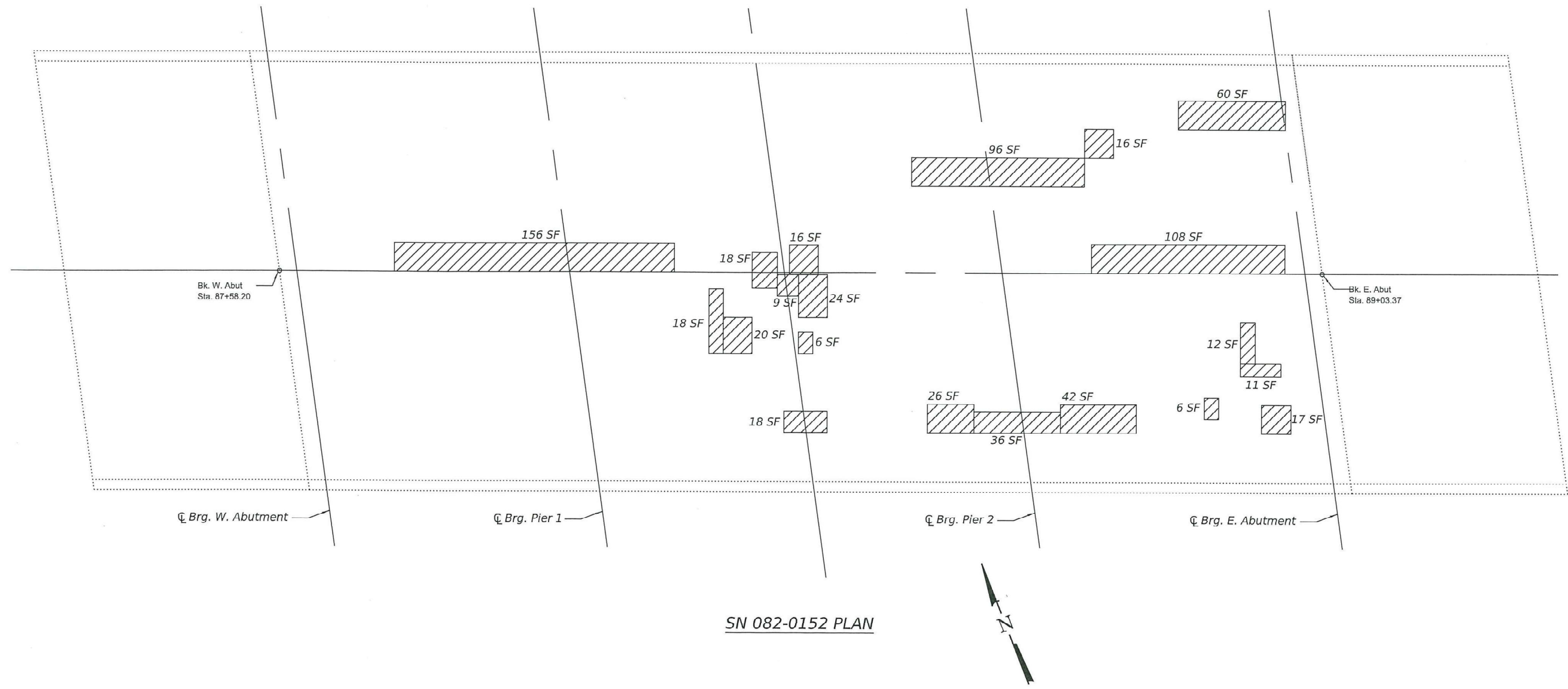
STATE OF ILLINOIS
DEPARTMENT OF TRANSPORTATION

BRIDGE PLAN AND ELEVATION
SN 082-0152 OVER 18TH ST

SHEET 1 OF 10 SHEETS

F.A.I. RTE. 84	SECTION 82-(1,2) BDR	COUNTY St. Clair	TOTAL SHEETS 22	SHEET NO. 13
ILLINOIS FED. AID PROJECT			CONTRACT NO. 76U17	

MODEL: Sheet 1
 FILE NAME: P:\19E334C-3176U17-164 Bridge Deck Repairs\CADD Sheets\ID876U17 - 0820152-164 EB over 18th St - Deck Repair Plan.dgn



SN 082-0152 PLAN

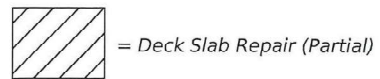


Notes:

Identified patching locations are estimated from a deck survey performed on 2/14/2024. The patching survey is included for information only. The engineer shall layout actual patch location in the field.

The engineer shall show actual location of deck repairs on As-Built Plans.

If Full Depth Patches are discovered, they shall be covered with steel plates during non work hours.



BILL OF MATERIAL

	Unit	Total
Deck Slab Repair (Partial)	Sq. Yd.	80
Protective Coat	Sq. Yd.	80

BA BENTON & ASSOCIATES, INC.
 270 N. LaSalle Street, Suite 2000
 Chicago, IL 60610
 Phone: (312) 467-1000
 Fax: (312) 467-1001
 Website: www.ba-inc.com

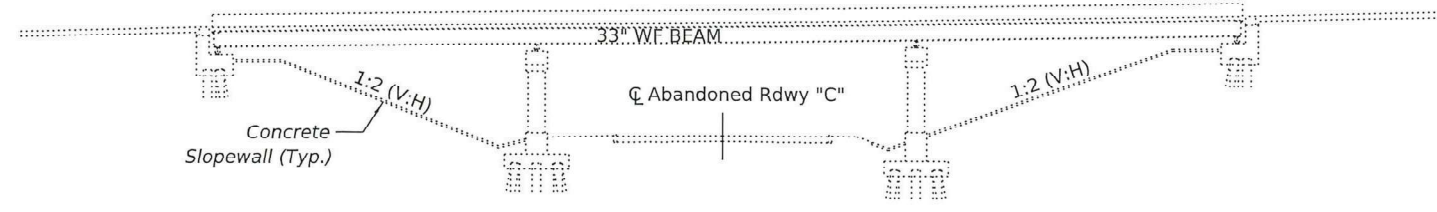
USER NAME = mhardy	DESIGNED CML	REVISED -
	CHECKED MBH	REVISED -
PLOT SCALE = \$SCALE\$	DRAWN CML	REVISED -
PLOT DATE = 2/16/2025	CHECKED MBH	REVISED -

STATE OF ILLINOIS
 DEPARTMENT OF TRANSPORTATION

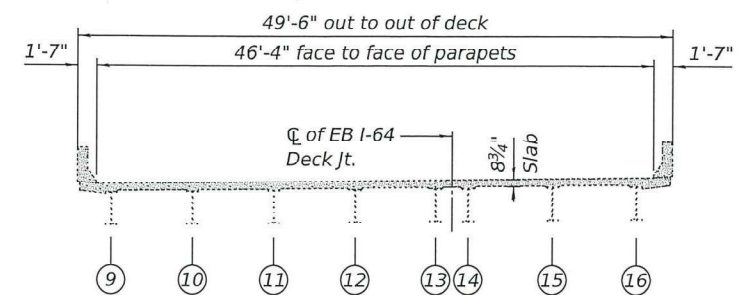
DECK REPAIR PLAN
 SN 082-0152 OVER 18TH ST

SHEET 2 OF 10 SHEETS

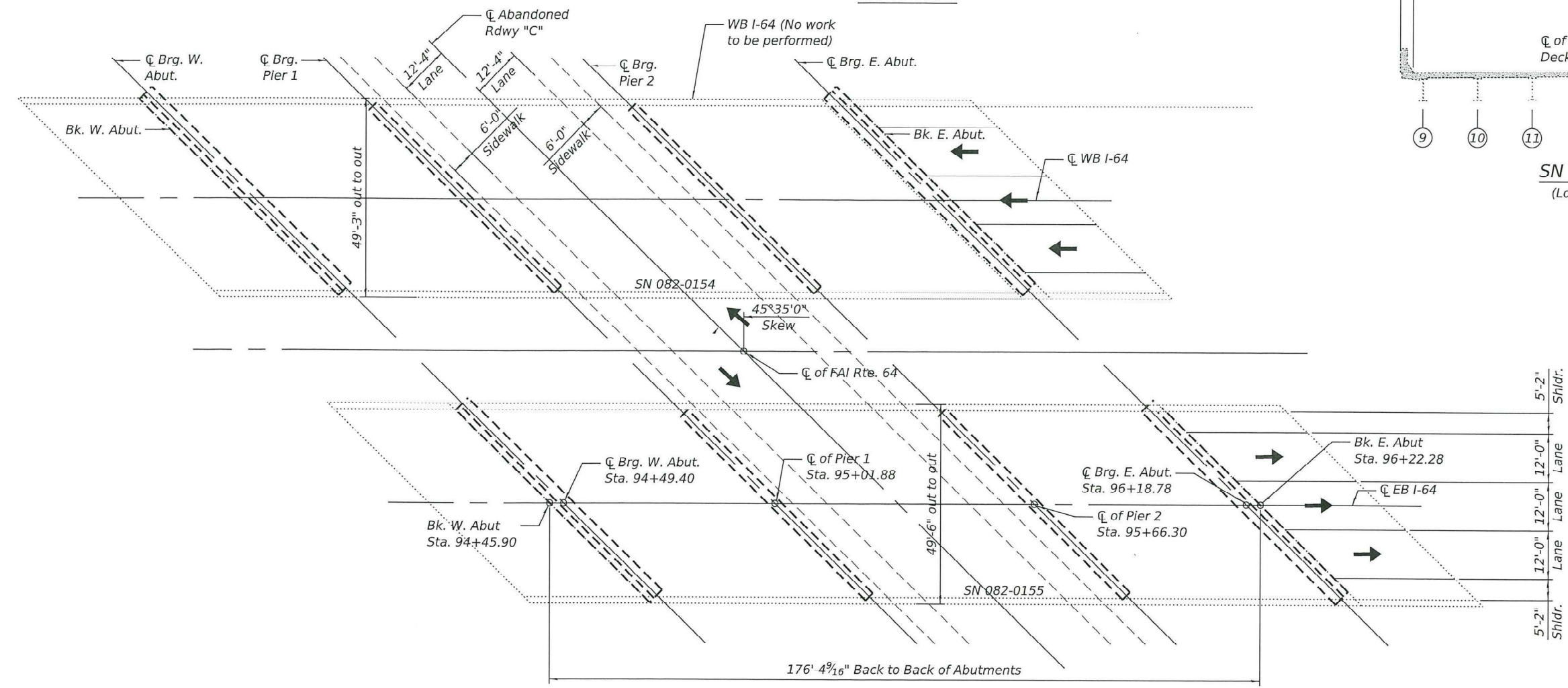
F.A.I. RTE.	SECTION	COUNTY	TOTAL SHEETS	SHEET NO.
64	82-(1,2) BDR	ST. CLAIR	22	14
CONTRACT NO. 76U17				
ILLINOIS FED. AID PROJECT				



ELEVATION



SN 082-0155
(Looking East)



PLAN

Notes:

Prior to pouring the new concrete patches, all heavy or loose rust, loose mill scale, and other loose detrimental foreign material shall be removed from the surfaces in contact with concrete (SSPC - SP3 standards). Tightly adhered paint may remain unless otherwise noted. Removal shall be accomplished by methods that will not damage the steel and the cost will be paid for according to Article 109.04 of the Standard Specifications.

Plan dimensions and details relative to the existing structure have been taken from existing plans are subject to nominal construction variations. The Contractor shall field verify existing dimensions and details affecting new construction and make necessary approved adjustments prior to construction or ordering of materials. Such variations shall not be cause for additional compensation for a change in scope of the work, however, the Contractor will be paid for the quantity actually furnished at the unit price bid for the work.

Existing reinforcement shall be cleaned, straightened and incorporated into the new construction. Cost included with Concrete Removal.

Protective coat shall be applied to new concrete only.



TOTAL BILL OF MATERIAL

	Unit	Total
Deck Slab Repair (Partial)	Sq. Yd.	110
Protective Coat	Sq. Yd.	110

MODEL: Sheet 1
FILE NAME: P:\19E3340-876U17-164 Bridge Deck Repairs\CADD Sheets\0820155-164 EB over Abandoned Rdwy - Bridge Plan and Elevation.dgn



USER NAME =	DESIGNED - CML	REVISED -
PLOT SCALE =	CHECKED - MBH	REVISED -
PLOT DATE = 12/11/24	DRAWN - CML	REVISED -
	CHECKED - MBH	REVISED -

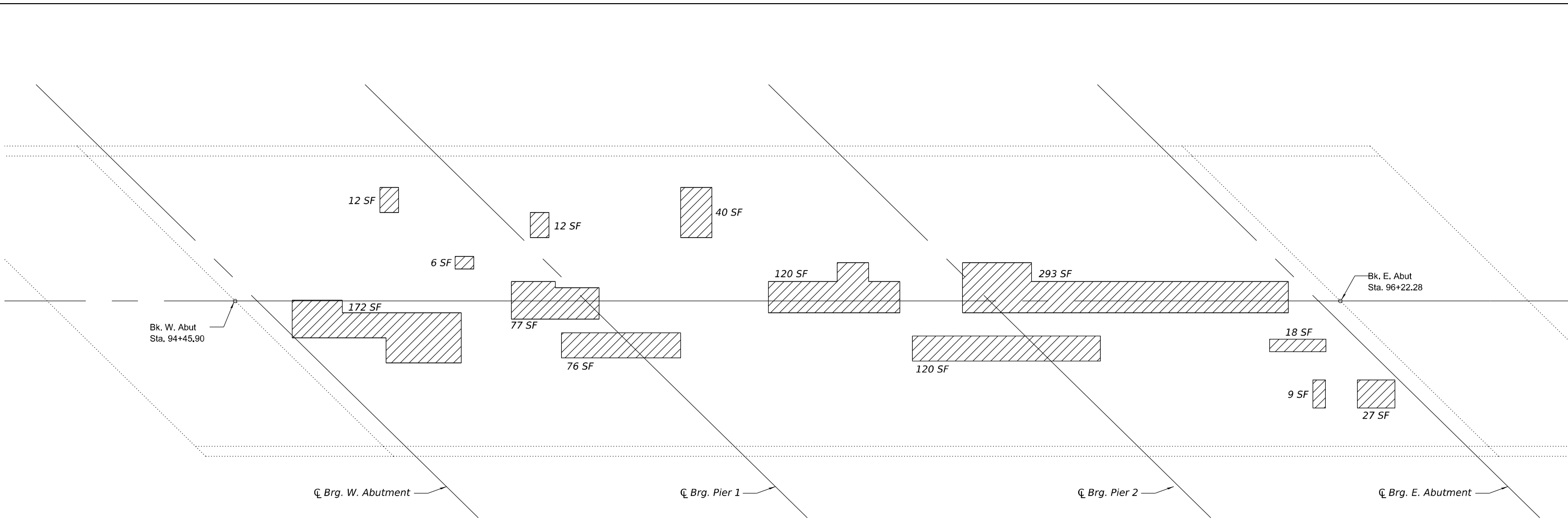
STATE OF ILLINOIS
DEPARTMENT OF TRANSPORTATION

BRIDGE PLAN AND ELEVATION
SN 082-0155 OVER ABANDONED ROADWAY "C"

SHEET 3 OF 10 SHEETS

F.A.I. RTE.	SECTION	COUNTY	TOTAL SHEETS	SHEET NO.
64	82-(1,2) BDR	St. Clair	22	15
CONTRACT NO. 76U17				
ILLINOIS FED. AID PROJECT				

MODEL: Sheet_1
 FILE NAME: P:\19E3340-876U17-164 Bridge Deck Repairs\CADD Sheets\0820155-164 EB over Abandoned Rdwy - Deck Repair Plan.dgn



SN 082-0155 PLAN

Notes:

Identified patching locations are estimated from a deck survey performed on 2/14/2024. The patching survey is included for information only. The engineer shall layout actual patch location in the field.

The engineer shall show actual location of deck repairs on As-Built Plans.

If Full Depth Patches are discovered, they shall be covered with steel plates during non work hours.

 = Deck Slab Repair (Partial)

BILL OF MATERIAL

	Unit	Total
Deck Slab Repair (Partial)	Sq. Yd.	110
Protective Coat	Sq. Yd.	110

BA BENTON & ASSOCIATES, INC.
 810 S. Lafayette Ave., Suite 200, Springfield, IL 62760
 (217) 784-4444, (217) 784-4444 For Registration No. 06-000852

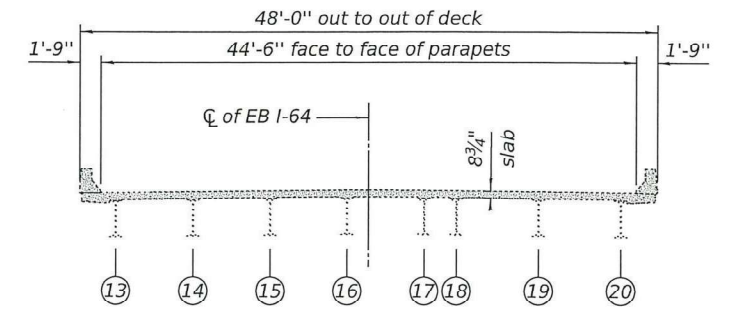
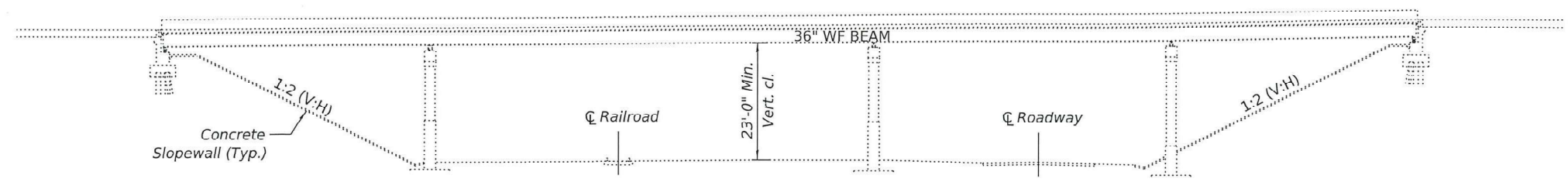
USER NAME =	DESIGNED - CML	REVISED -
	CHECKED - MBH	REVISED -
PLOT SCALE =	DRAWN - CML	REVISED -
PLOT DATE = 12/11/24	CHECKED - MBH	REVISED -

**STATE OF ILLINOIS
 DEPARTMENT OF TRANSPORTATION**

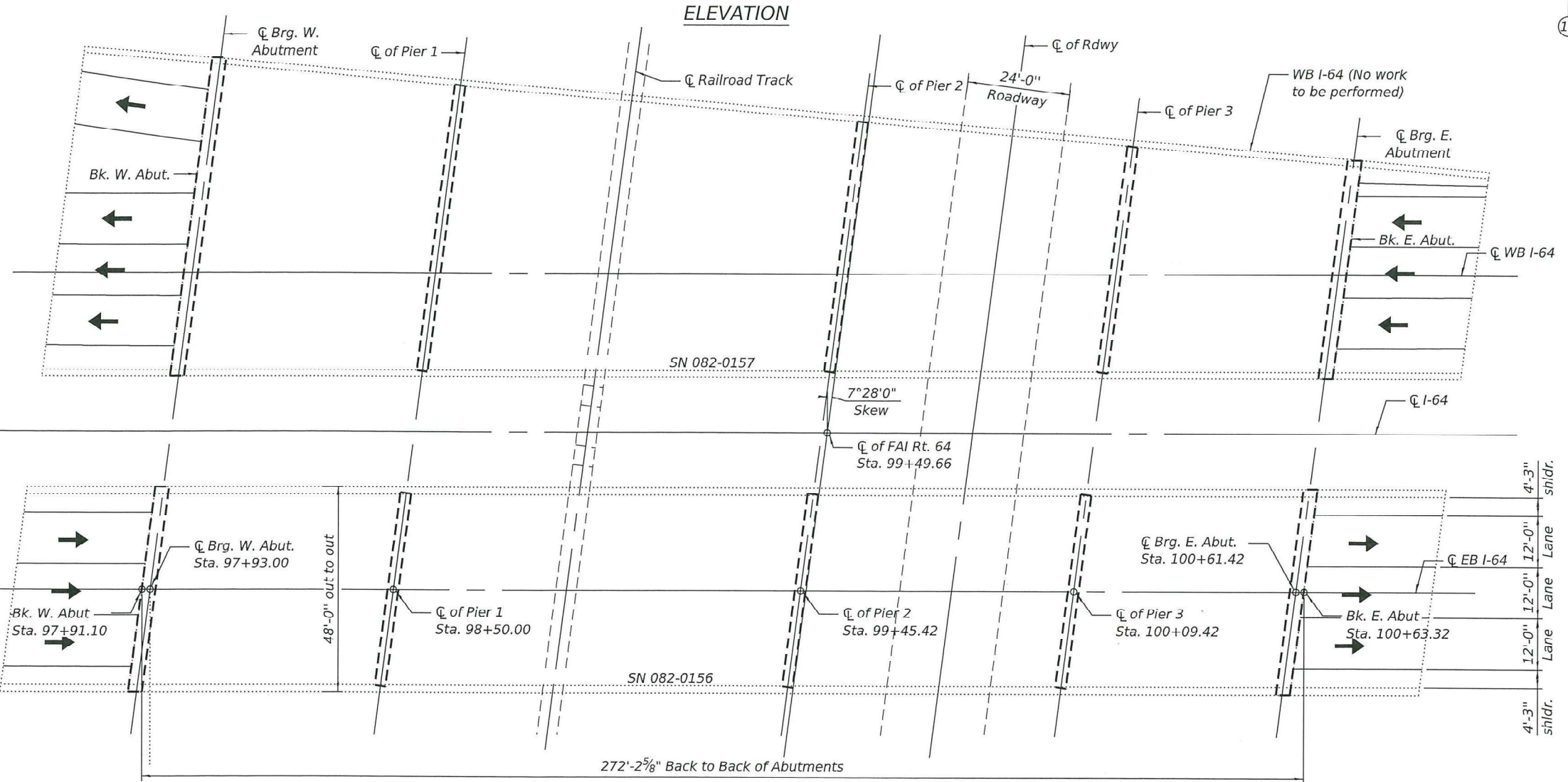
**DECK REPAIR PLAN
 SN 082-0155 OVER ABANDONED ROADWAY "C"**

SHEET 4 OF 10 SHEETS

F.A.I. RTE.	SECTION	COUNTY	TOTAL SHEETS	SHEET NO.
64	82-(1,2) BDR	St. Clair	22	16
CONTRACT NO. 76U17				
ILLINOIS FED. AID PROJECT				



SN 082-0156 Cross Section
(Looking East)



PLAN

Notes:

Prior to pouring the new concrete patches, all heavy or loose rust, loose mill scale, and other loose detrimental foreign material shall be removed from the surfaces in contact with concrete (SSPC - SP3 standards). Tightly adhered paint may remain unless otherwise noted. Removal shall be accomplished by methods that will not damage the steel and the cost will be paid for according to Article 109.04 of the Standard Specifications.

Plan dimensions and details relative to the existing structure have been taken from existing plans and are subject to nominal construction variations. The Contractor shall field verify existing dimensions and details affecting new construction and make necessary approved adjustments prior to construction or ordering of materials. Such variations shall not be cause for additional compensation for a change in scope of the work, however, the Contractor will be paid for the quantity actually furnished at the unit price bid for the work.

Existing reinforcement shall be cleaned, straightened and incorporated into the new construction. Cost included with Concrete Removal.

Protective coat shall be applied to new concrete only.



TOTAL BILL OF MATERIAL

	Unit	Total
Deck Slab Repair (Partial)	Sq. Yd.	242
Deck Slab Repair (Full Depth, Type II)	Sq. Yd.	67
Protective Coat	Sq. Yd.	309
Protective Shield	Sq. Yd.	170

MODEL: Sheet 1
FILE NAME: P:\18E3940-8\76U17 L-64 Bridge Deck Repairs\CADD Sheets\0876U17 - 0620156 I-64 EB over NSRR - Bridge Plan and Elevation.dgn
2/6/2025 2:26:55 PM



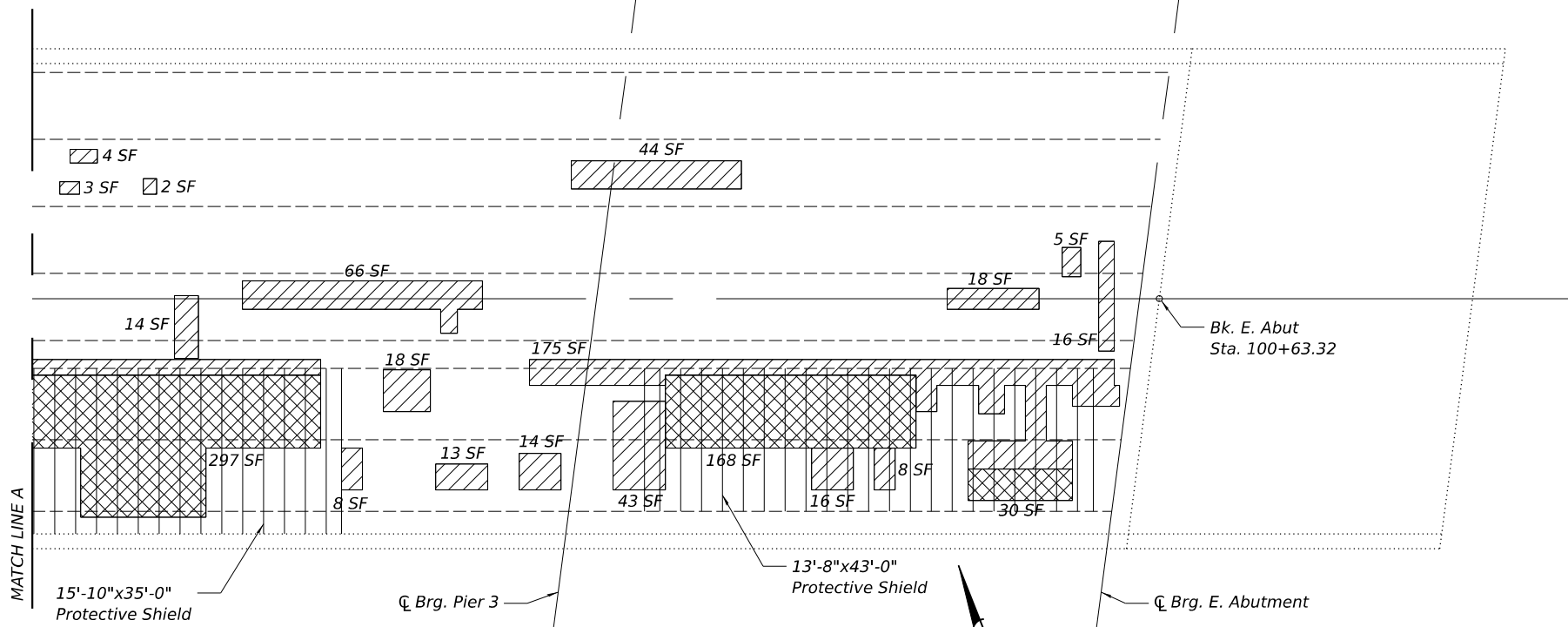
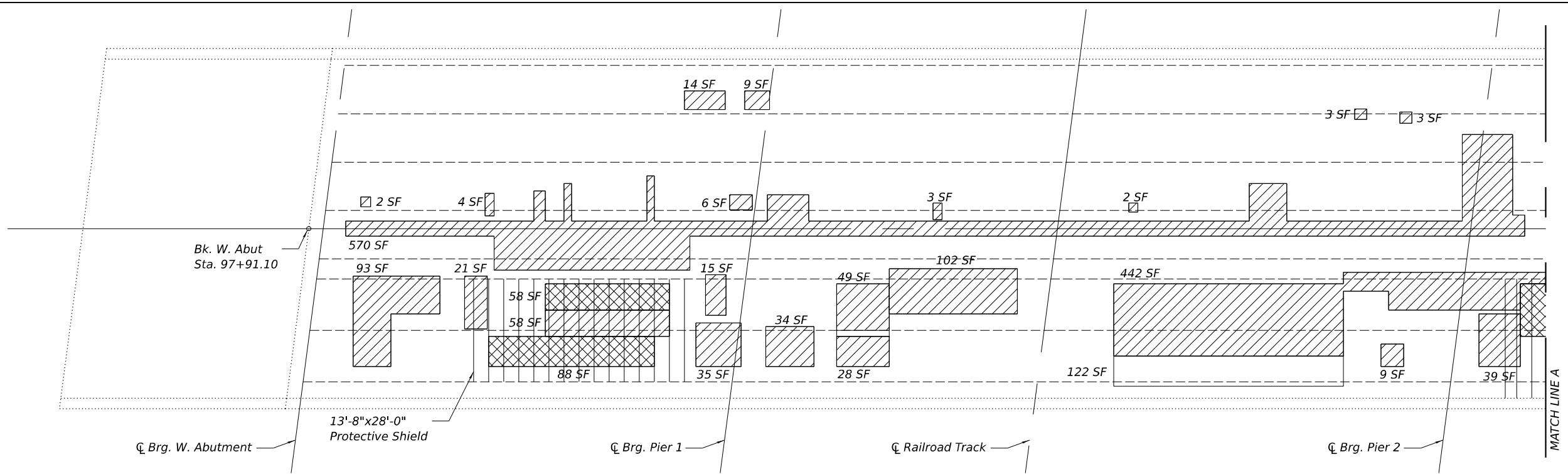
USER NAME =	DESIGNED - CML	REVISED -
	CHECKED - MBH	REVISED -
PLOT SCALE =	DRAWN - CML	REVISED -
PLOT DATE = 12/11/24	CHECKED - MBH	REVISED -

STATE OF ILLINOIS
DEPARTMENT OF TRANSPORTATION

BRIDGE PLAN AND ELEVATION
SN 082-0156 OVER NS RAILROAD

SHEET 5 OF 10 SHEETS

F.A.I. RTE.	SECTION	COUNTY	TOTAL SHEETS	SHEET NO.
64	82-(1,2) BDR	St. Clair	22	17
			CONTRACT NO. 76U17	
ILLINOIS FED. AID PROJECT				



- = Deck Slab Repair (Partial)
- = Deck Slab Repair (Full Depth, Type II)
- = Protective Shield

SN 082-0156 PLAN



Notes:

Identified patching locations are estimated from a deck survey performed on 2/14/2024. The patching survey is included for information only. The engineer shall layout actual patch location in the field.

The engineer shall show actual location of deck repairs on As-Built Plans.

If Full Depth Patches are discovered, they shall be covered with steel plates during non work hours.

BILL OF MATERIAL

	Unit	Total
Deck Slab Repair (Partial)	Sq. Yd.	242
Deck Slab Repair (Full Depth, Type II)	Sq. Yd.	67
Protective Coat	Sq. Yd.	309
Protective Shield	Sq. Yd.	170

MODEL: Sheet 1
FILE NAME: P:\19E3340-976U17-164 Bridge Deck Repairs\CADD Sheets\0820156-164 EB over NSSR - Deck Repair Plan.dgn

BA BENTON & ASSOCIATES, INC.
 810 S. Lafayette Ave., Suite 200, Springfield, IL 62760
 (217) 784-4444 (217) 784-4444 For
 Registration No. 06-000852

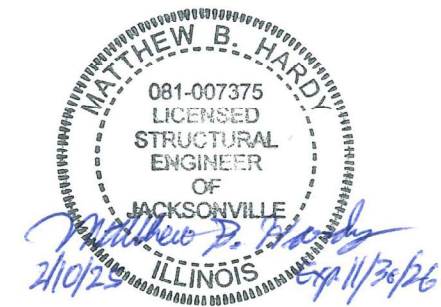
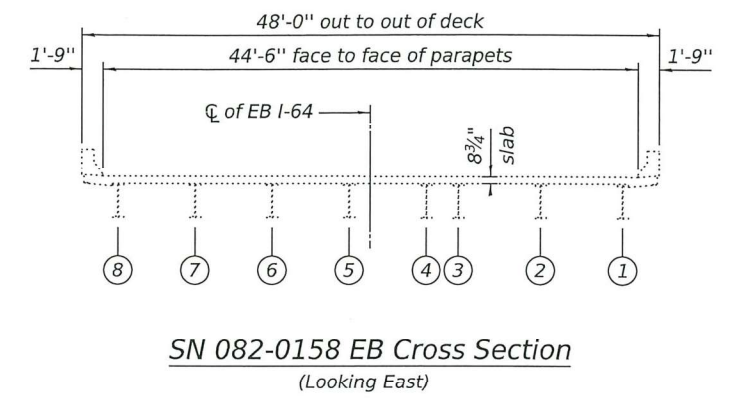
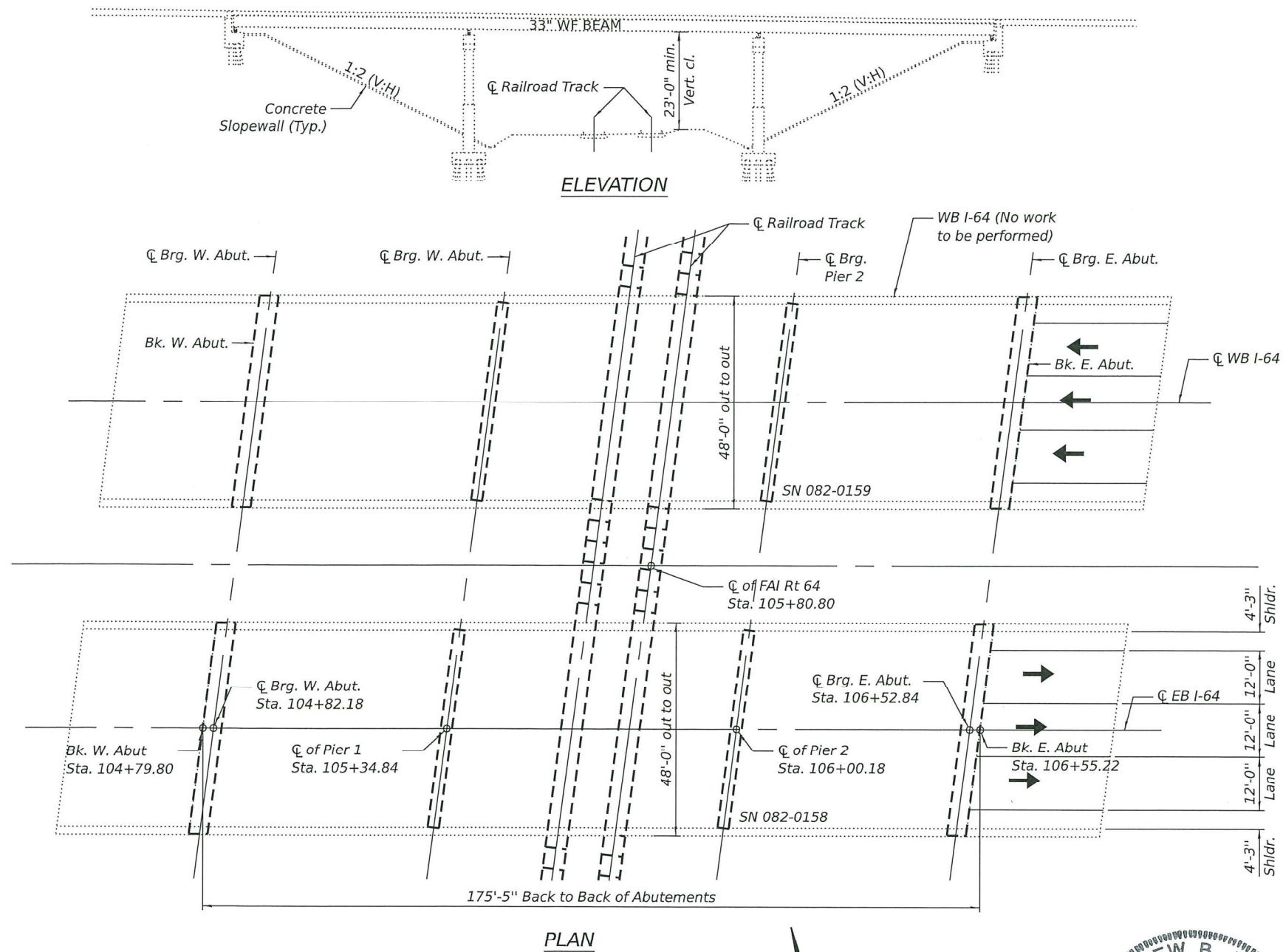
USER NAME =	DESIGNED - CML	REVISED -
PLOT SCALE =	CHECKED - MBH	REVISED -
PLOT DATE = 12/11/24	DRAWN - CML	REVISED -
	CHECKED - MBH	REVISED -

**STATE OF ILLINOIS
DEPARTMENT OF TRANSPORTATION**

**DECK REPAIR PLAN
SN 082-0156 OVER NS RAILROAD**

SHEET 6 OF 10 SHEETS

F.A.I. RTE.	SECTION	COUNTY	TOTAL SHEETS	SHEET NO.
64	82-(1,2) BDR	St. Clair	22	18
CONTRACT NO. 76U17				
ILLINOIS FED. AID PROJECT				



Notes:

Prior to pouring the new concrete patches, all heavy or loose rust, loose mill scale, and other loose detrimental foreign material shall be removed from the surfaces in contact with concrete (SSPC - SP3 standards). Tightly adhered paint may remain unless otherwise noted. Removal shall be accomplished by methods that will not damage the steel and the cost will be paid for according to Article 109.04 of the Standard Specifications.

Plan dimensions and details relative to the existing structure have been taken from existing plans are subject to nominal construction variations. The Contractor shall field verify existing dimensions and details affecting new construction and make necessary approved adjustments prior to construction or ordering of materials. Such variations shall not be cause for additional compensation for a change in scope of the work, however, the Contractor will be paid for the quantity actually furnished at the unit price bid for the work.

Existing reinforcement shall be cleaned, straightened and incorporated into the new construction. Cost included with Concrete Removal.

Protective coat shall be applied to new concrete only.

TOTAL BILL OF MATERIAL

	Unit	Total
Deck Slab Repair (Partial)	Sq. Yd.	98
Deck Slab Repair (Full Depth, Type II)	Sq. Yd.	19
Protective Coat	Sq. Yd.	117
Protective Shield	Sq. Yd.	46

MODEL: Sheet 1
FILE NAME: P:\19E3340-8\76117_134 Bridge Deck Repairs\CADD Sheets\0820158 EB over TRRA - Bridge Plan and Elevation.dgn

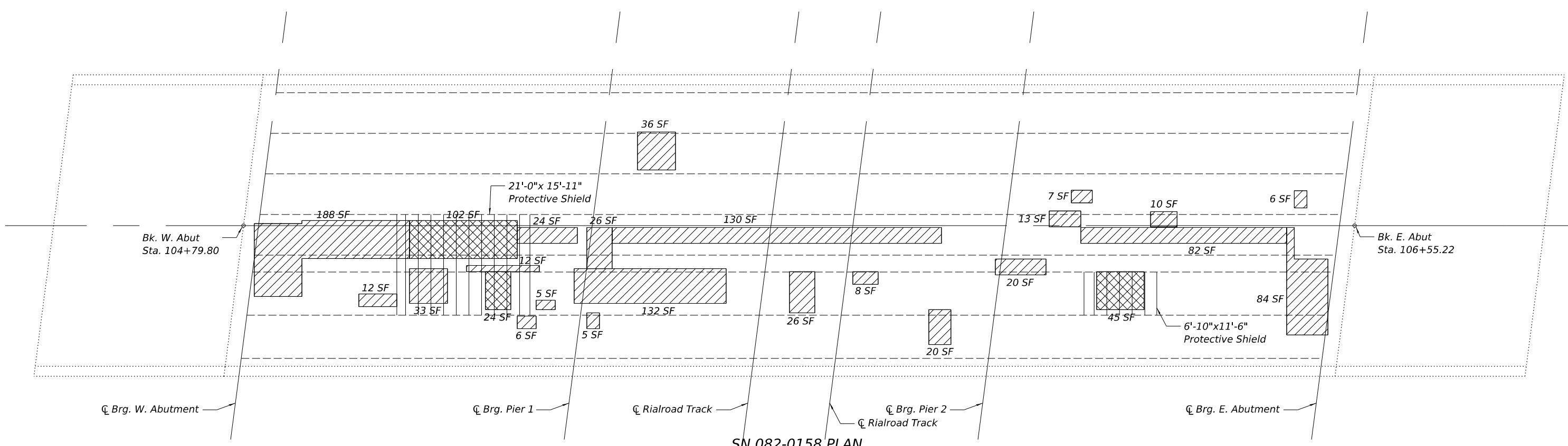
USER NAME =	DESIGNED - CML	REVISED -
PLOT SCALE =	CHECKED - MBH	REVISED -
PLOT DATE = 12/11/24	DRAWN - CML	REVISED -
	CHECKED - MBH	REVISED -

STATE OF ILLINOIS
DEPARTMENT OF TRANSPORTATION

BRIDGE PLAN AND ELEVATION
SN 082-0158 OVER TRRA RAILROAD
SHEET 7 OF 10 SHEETS

F.A.I. RTE.	SECTION	COUNTY	TOTAL SHEETS	SHEET NO.
64	82-(1,2) BDR	St. Clair	22	19
			CONTRACT NO. 76U17	
		ILLINOIS	FED. AID PROJECT	

MODEL: Sheet 1
 FILE NAME: P:\19E334C-976U17-164 Bridge Deck Repairs\CADD Sheets\0820158 1-64 EB over TRRA - Deck Repair Plan.dgn



SN 082-0158 PLAN



Notes:

Identified patching locations are estimated from a deck survey performed on 2/14/2024. The patching survey is included for information only. The engineer shall layout actual patch location in the field.

The engineer shall show actual location of deck repairs on As-Built Plans.

If Full Depth Patches are discovered, they shall be covered with steel plates during non work hours.

= Deck Slab Repair (Partial)

= Deck Slab Repair (Full Depth, Type II)

= Protective Shield

BILL OF MATERIAL

	Unit	Total
Deck Slab Repair (Partial)	Sq. Yd.	98
Deck Slab Repair (Full Depth, Type II)	Sq. Yd.	19
Protective Coat	Sq. Yd.	117
Protective Shield	Sq. Yd.	46

BA BENTON & ASSOCIATES, INC.
 810 N. LaSalle Ave., Suite 2000
 Chicago, IL 60610
 Phone: 312.245.4400
 Fax: 312.245.4401
 Website: www.ba-inc.com

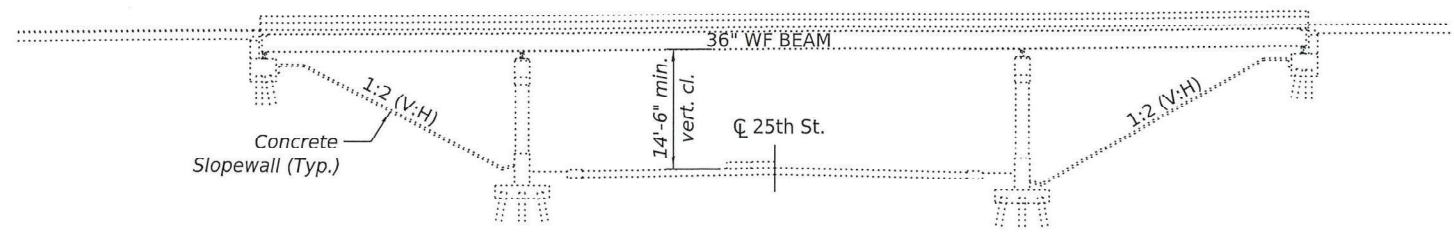
USER NAME =	DESIGNED - CML	REVISED -
	CHECKED - MBH	REVISED -
PLOT SCALE =	DRAWN - CML	REVISED -
PLOT DATE = 12/11/24	CHECKED - MBH	REVISED -

STATE OF ILLINOIS
 DEPARTMENT OF TRANSPORTATION

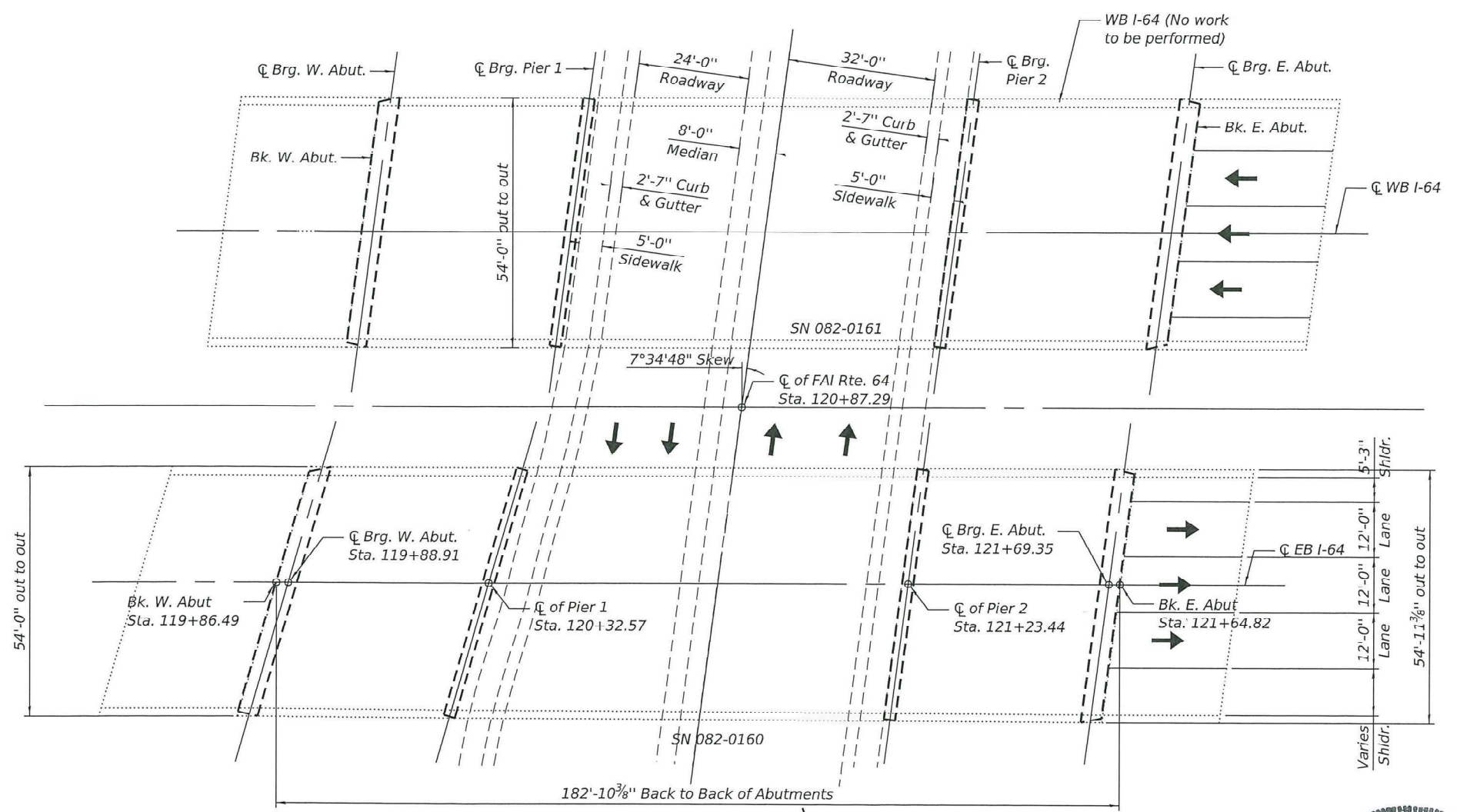
DECK REPAIR PLAN
 SN 082-0158 OVER TRRA RAILROAD

SHEET 8 OF 10 SHEETS

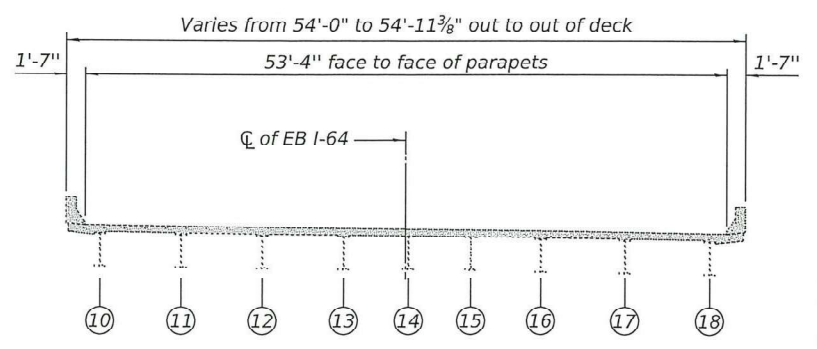
F.A.I. RTE.	SECTION	COUNTY	TOTAL SHEETS	SHEET NO.
64	82-(1,2) BDR	St. Clair	22	20
CONTRACT NO. 76U17				
ILLINOIS		FED. AID PROJECT		



ELEVATION



PLAN



SN 082-0160 EB Cross Section
(Looking East)

Notes:

Prior to pouring the new concrete patches, all heavy or loose rust, loose mill scale, and other loose detrimental foreign material shall be removed from the surfaces in contact with concrete (SSPC - SP3 standards). Tightly adhered paint may remain unless otherwise noted. Removal shall be accomplished by methods that will not damage the steel and the cost will be paid for according to Article 109.04 of the Standard Specifications.

Plan dimensions and details relative to the existing structure have been taken from existing plans and are subject to nominal construction variations. The Contractor shall field verify existing dimensions and details affecting new construction and make necessary approved adjustments prior to construction or ordering of materials. Such variations shall not be cause for additional compensation for a change in scope of the work, however, the Contractor will be paid for the quantity actually furnished at the unit price bid for the work.

Existing reinforcement shall be cleaned, straightened and incorporated into the new construction. Cost included with Concrete Removal.

Protective coat shall be applied to new concrete only.



TOTAL BILL OF MATERIAL

	Unit	Total
Deck Slab Repair (Partial)	Sq. Yd.	176
Deck Slab Repair (Full Depth, Type II)	Sq. Yd.	35
Protective Coat	Sq. Yd.	211
Protective Shield	Sq. Yd.	93

MODEL: Sheet 1
FILE NAME: P:\1\9E3940-876U17 L64 Bridge Deck Repairs\CADD Sheets\082160 EB over 25th St - Bridge Plan and Elevation.dgn

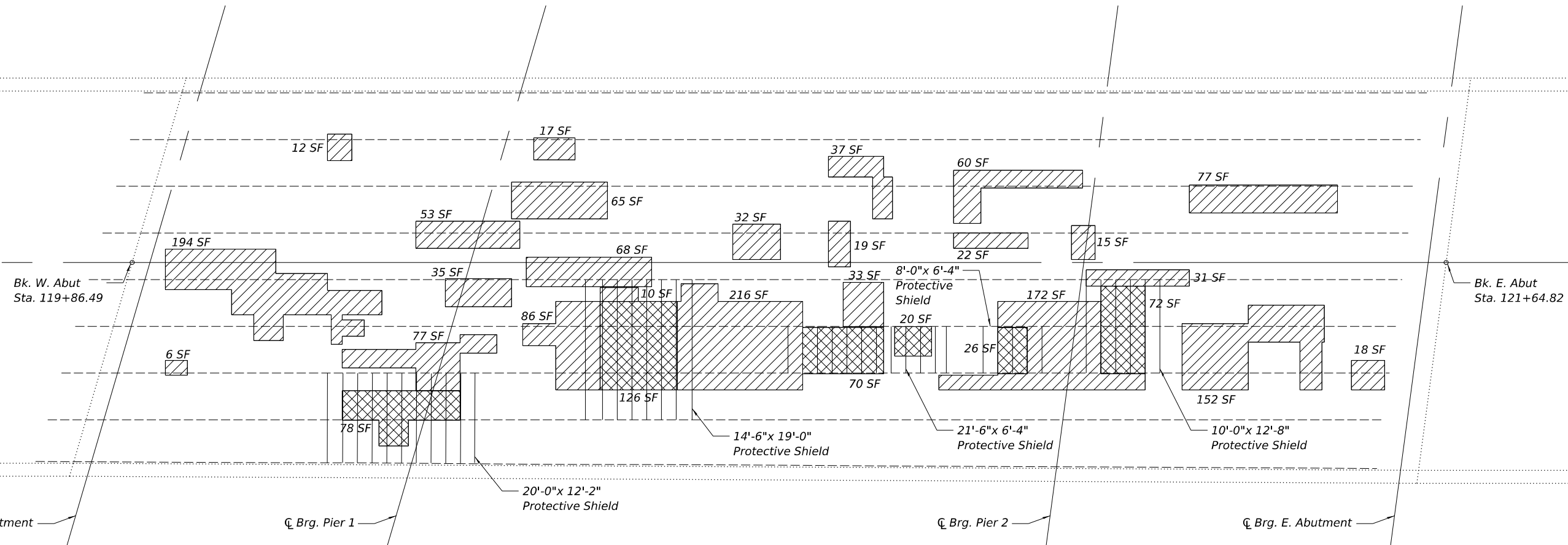
BA BENTON & ASSOCIATES, INC.
219 N. LOUISIANA ST., SUITE 200
JACKSONVILLE, IL 62601
TEL: 217-245-4544 FAX: 217-245-4893

USER NAME =	DESIGNED - CML	REVISED -
PLOT SCALE =	CHECKED - MBH	REVISED -
PLOT DATE = 12/11/24	DRAWN - CML	REVISED -
	CHECKED - MBH	REVISED -

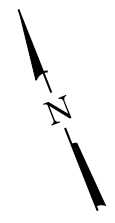
STATE OF ILLINOIS
DEPARTMENT OF TRANSPORTATION

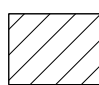
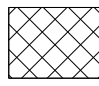

BRIDGE PLAN AND ELEVATION
SN 082-0160 OVER 25TH ST

F.A.I. RTE.	SECTION	COUNTY	TOTAL SHEETS	SHEET NO.
64	82-(1,2) BDR	St. Clair	22	21
CONTRACT NO. 76U17				
ILLINOIS FED. AID PROJECT				



SN 082-0160 PLAN



-  = Deck Slab Repair (Partial)
-  = Deck Slab Repair (Full Depth, Type II)
-  = Protective Shield

Notes:

Identified patching locations are estimated from a deck survey performed on 2/14/2024. The patching survey is included for information only. The engineer shall layout actual patch location in the field.

The engineer shall show actual location of deck repairs on As-Built Plans.

If Full Depth Patches are discovered, they shall be covered with steel plates during non work hours.

BILL OF MATERIAL

	Unit	Total
Deck Slab Repair (Partial)	Sq. Yd.	176
Deck Slab Repair (Full Depth, Type II)	Sq. Yd.	35
Protective Coat	Sq. Yd.	211
Protective Shield	Sq. Yd.	93

MODEL: Sheet 1
FILE NAME: P:\19E3340-976U17-164 Bridge Deck Repairs\CADD Sheets\0820160-164 EB over 25th St - Deck Repair Plan.dgn

BENTON & ASSOCIATES, INC.
 810 N. LaSalle Ave., Suite 2000
 Chicago, IL 60610
 Phone: (312) 467-1000
 Fax: (312) 467-1001
 www.bentonandassociates.com

USER NAME =	DESIGNED - CML	REVISED -
	CHECKED - MBH	REVISED -
PLOT SCALE =	DRAWN - CML	REVISED -
PLOT DATE = 12/11/24	CHECKED - MBH	REVISED -

**STATE OF ILLINOIS
DEPARTMENT OF TRANSPORTATION**

**DECK REPAIR PLAN
SN 082-0160 OVER 25TH ST**

SHEET 10 OF 10 SHEETS

F.A.I. RTE.	SECTION	COUNTY	TOTAL SHEETS	SHEET NO.
64	82-(1,2) BDR	St. Clair	22	22
CONTRACT NO. 76U17				
ILLINOIS FED. AID PROJECT				