

F.A.S. RTE.	SECTION	COUNTY	TOTAL SHEETS	SHEET NO.
	21-00835-00-BR	LASALLE	22	1
		ILLINOIS	CONTRACT NO. 87853	

INDEX OF SHEETS

- 1 COVER SHEET
- 2 GENERAL NOTES
- 3 SUMMARY OF QUANTITIES
- 4 TYPICAL SECTIONS
- 5 TEMPORARY INFORMATION SIGNING
- 6 MILL AND OVERLAY PLAN
- 7 REMOVAL PLAN
- 8 PLAN AND PROFILE
- 9 EROSION CONTROL PLAN
- 10-12 STRUCTURE PLANS
- 13-14 SOIL BORINGS
- 15-22 EXISTING PLANS

03-07-2025 LETTING ITEM 129

STATE OF ILLINOIS
DEPARTMENT OF TRANSPORTATION
DIVISION OF HIGHWAYS
**PLANS FOR PROPOSED
SURFACE TRANSPORTATION PROGRAM
BRIDGE REPLACEMENT
KELLY STREET (MS7730) OVER PRAIRIE CREEK
SECTION 21-00835-00-BR
PROJECT #Y66W(867)
CITY OF STREATOR
S.N. 050-8029
LASALLE COUNTY
C-93-007-25**

STANDARDS

SEE LIST OF DOT HIGHWAY STANDARDS ON SHEET 2

UTILITIES

COMED
2 LINCOLN CENTER
OAKBROOK TERRACE, IL 60181
KYLE ISEK
(630) 576-7094

AT&T
1000 COMMERCE DRIVE
OAKBROOK, IL 60523
TOM LASKOWSKI
(630) 573-5643

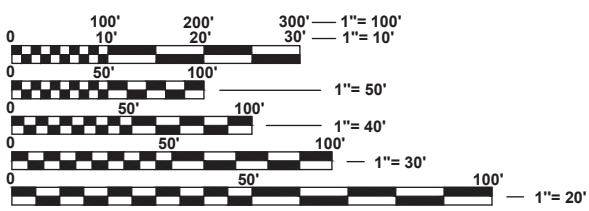
CITY OF STREATOR
204 S BLOOMINGTON STREET
STREATOR, IL 61364
JEREMY PALM, CITY ENGINEER
(815)672-2517

MEDIACOM
2506 1/2 N. BLOOMINGTON STREET
STREATOR, IL 61364
(855) 633-4226

NICOR
1844 FERRY ROAD
NAPERVILLE, IL 60563
SAKIBUL FORAH
(630) 388-2903

FUNCTIONAL CLASSIFICATION

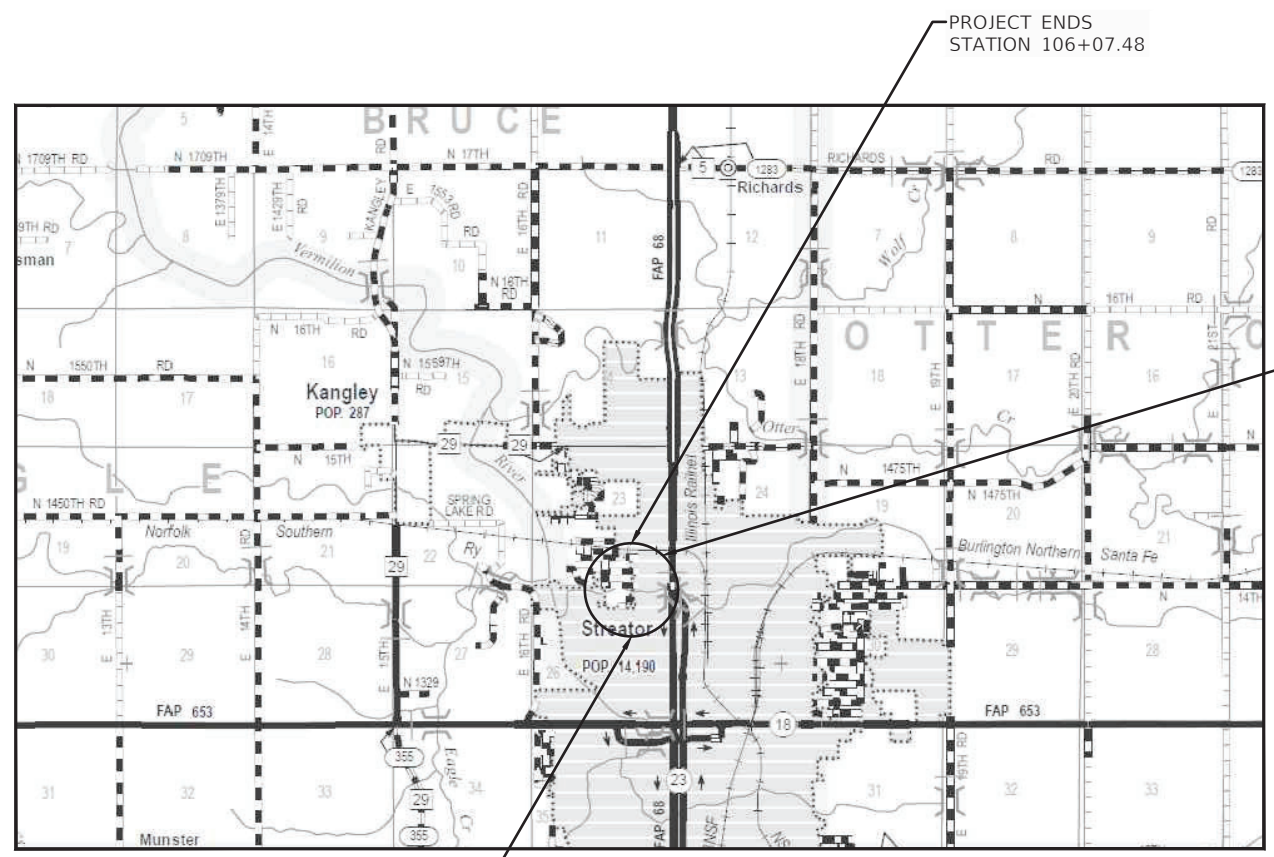
LOCAL STREET: 150 ADT (2029)
DESIGN SPEED: 20 MPH



FULL SIZE PLANS HAVE BEEN PREPARED USING STANDARD ENGINEERING SCALES. REDUCED SIZED PLANS WILL NOT CONFORM TO STANDARD SCALES. IN MAKING MEASUREMENTS ON REDUCED PLANS, THE ABOVE SCALES MAY BE USED.

J.U.L.I.E.
JOINT UTILITY LOCATION INFORMATION FOR EXCAVATION
1-800-892-0123
OR 811

CONTRACT NO. 87853



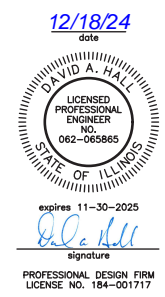
PROJECT BEGINS
STATION 98+34.18

PROJECT ENDS
STATION 106+07.48



EXISTING STRUCTURE:
SINGLE-SPAN PRECAST CHANNEL
BEAM BRIDGE ON STEEL SOLDIER
PILE CLOSED ABUTMENTS

PROPOSED STRUCTURE
PRECAST 3-SIDED STRUCTURE
WITH PRECAST WINGWALLS
STA. 102+55.03
SN 050-8029



STATE OF ILLINOIS
DEPARTMENT OF TRANSPORTATION
DIVISION OF HIGHWAYS

SUBMITTED 12-16-2024
David A. Hale
LASALLE COUNTY ENGINEER

12/16 2024
[Signature]
CITY OF STREATOR ENGINEER

January 3, 20 25
[Signature]
DISTRICT 3 LOCAL ROADS AND STREETS ENGINEER

RELEASED January 3, 20 25
FOR BID
BASED ON [Signature]
LIMITED
REVIEW REGION 2 ENGINEER

PRINTED BY THE AUTHORITY
OF THE STATE OF ILLINOIS

GROSS LENGTH = 773.3 FEET = 0.146 MILES
NET LENGTH = 773.3 FEET = 0.146 MILES

CHAMLIN & ASSOCIATES, INC. © 2024
Drawing Name: R:\USERS\1111567\00 - Streator Kelly Street Bridge Replacement\CAD\PLANS\001-COVER.dwg
Last Modified: Monday, December 16, 2024 11:43:39 AM
Plotted On: Wednesday, December 18, 2024 4:20:06 PM
by Kurt Decker

DRAWN BY: KED	LEVEL	BY	DATE	REVISIONS	DESCRIPTION
CHECKED BY: DAH					
DATE: 09/2024					

PERU MORRIS
OTTAWA MORTON
ILLINOIS

**KELLY STREET BRIDGE REPLACEMENT
SECTION 21-00835-00-BR
LASALLE COUNTY**

COVER SHEET
SHEET 1 of 1 SHEETS

BID SET	CURRENT AS OF: <u>12/16/2024</u>	
	SCALE: AS NOTED	SHEET 1
	FILE NO.: 111567.00 Y-	OF 22

F.A.S. RTE.	SECTION	COUNTY	TOTAL SHEETS	SHEET NO.
	21-00835-00-BR	LASALLE	22	2
		ILLINOIS	CONTRACT NO. 87853	

General Notes

- The thickness of HMA shown on the plans is the nominal thickness. Deviations from the nominal thickness will be permitted when such deviations occur due to irregularities in the existing surface or base on which the HMA is placed.
- Except as noted on plans, pavement grades shown are at the top of pavement surfaces.
- The Engineer will be the sole judge concerning curing time for the various HMA lifts.
- For stabilization, all Type III barricades will require a minimum of eight (8) sandbags per barricade.
- Seeding will not be permitted at any time when the ground is frozen, wet, or in an untillable condition. Locations to be seeded will be determined by the Engineer.
- All elevations referring to U.S.G.S. Mean Sea Level Datum.
- Abandoned underground utilities that conflict with construction shall be disposed of outside the limits of the Right of Way according to Article 202.03 of the Standard Specifications and as directed by the Engineer. This work will be not be paid for separately, but will be included in the cost of Earth Excavation.
- Any reference to a Standard in these Plans shall be interpreted to mean the Edition as indicated by the subnumber shown in the list of Standards or the copy included in these Plans.
- The following rates of application have been used in calculating plan quantities:

Granular Materials	2.05	tons/cu yd
HMA Surfacing	112	lbs/sq yd/in
Prime Coat for Aggregate Base	0.25	lbs/sq ft
Tack Coat for Milled HMA	0.05	lbs/sq ft
Tack Coat for New HMA	0.025	lbs/sq ft
- Members of J.U.L.I.E. known to be within the limits of the improvements are: ComEd, AT&T, City of Streator, Mediacom, Nicor
- The Contractor shall contact J.U.L.I.E. at least 48 hours prior to excavation to determine which utilities are in the area.
- Precast wingwalls and drainage components shall be included in the precast structure pay item.

Erosion and Sediment Control (ESC) Notes

Soil erosion and sediment control shall be in accordance with applicable portions of the Illinois Urban Manual, updated 2020.

Provisions shall be made to minimize the transport of sediment by vehicular traffic from the construction site. All public streets shall be cleaned daily or as directed by the Engineer to keep clean of sediment and debris caused by construction activities. Adjacent properties shall be protected from sediment deposition by use of an acceptable erosion control practice such as vegetative buffer strips or sediment barriers. Should an erosion control item not be included as a Bid Item or not be addressed per Special Provision and be determined necessary by the Engineer, those items will be paid for at a pre-approved unit price.

It will be the Contractor/Sub-Contractor's responsibility to implement and maintain all necessary erosion control measures.

Contractor shall employ all erosion control devices as shown on the plans, applicable IDOT Roadway Standards, and applicable Illinois Urban Manual Standards. A temporary concrete washout facility shall be constructed as depicted on the plans if concrete will wash out at the work site.

All erosion control measures will be maintained in accordance with the IDOT Erosion Control and Sediment Control Field Guide for construction inspection found on the construction tab at: <https://idot.illinois.gov/>

All the soil erosion and sediment control features must be constructed prior to the commencement of upland disturbance. Soil disturbance must be phased or enacted in such manner as to minimize erosion. Soil stabilization measures must consider the time of year, site conditions and the use of temporary and/or permanent measures.

The Contractor shall check all ESC measures weekly and after each rainfall, 0.5 inches or greater in a 24-hour period, or equivalent snowfall. Additionally, during winter months, all measures should be checked by the Contractor after each significant snowmelt.

Temporary or permanent stabilization shall be initiated immediately upon completion of disturbance or if the work area is to be left undisturbed for 14 days or more.

Under no circumstances shall the Contractor prolong final grading and shaping so that the entire project can be permanently seeded at one time.

The Contractor's representative and the Engineer must keep a written report summarizing the required inspections taken place. The reports must be kept at the site during construction and submitted to the Owner upon project completion. The reports must also be retained for three years from the date the site is finally stabilized.

Any sediment laden dewatering discharge must be directed to an approved sediment trapping control measure prior to release from the project site. Any dewatering method used by the Contractor shall be included in the cost of the item.

Seeding Usage:

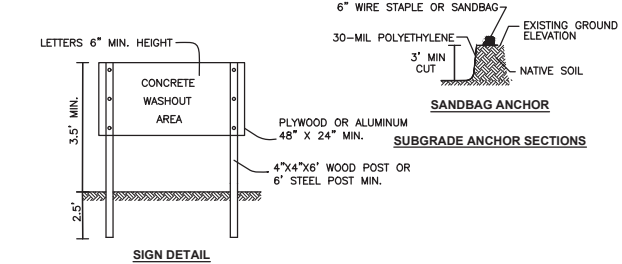
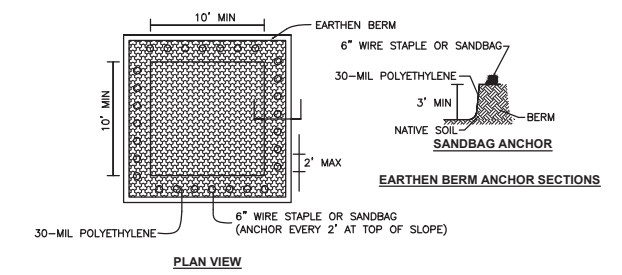
Class 3 shall be used at final disturbed construction areas indicated on the Plans.

Erosion Control Operations & Maintenance

All maintenance of erosion control systems will be the responsibility of the Contractor.

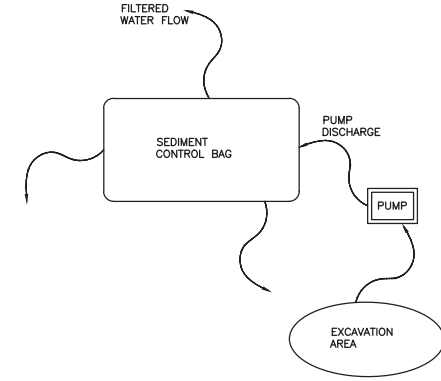
Topsoil Placement

Topsoil will be placed on final slopes which will not be disturbed by future construction, as directed by the Engineer. Topsoil will not be placed on surfaces which will be paved in the future nor on temporary steep slopes.



- NOTES:**
- MAINTAINING TEMPORARY CONCRETE WASHOUT FACILITIES SHALL INCLUDE REMOVING AND DISPOSING OF HARDEND CONCRETE AND/OR SLURRY AND RETURNING THE FACILITIES TO A FUNCTIONAL CONDITION.
 - FACILITY SHALL BE CLEANED OR RECONSTRUCTED IN A NEW AREA ONCE WASHOUT BECOMES TWO-THIRDS FULL.
 - COST OF WASHOUT FACILITY SHALL BE INCLUDED IN THE CONCRETE PAY ITEMS.

TEMPORARY CONCRETE WASHOUT FACILITY - EARTHEN TYPE
ILLINOIS URBAN MANUAL DRAWING IUM-654ET



- NOTES:**
- SEDIMENT FILTRATION BAGS SHALL BE PLACED ON A STABILIZED SURFACE AWAY FROM RECEIVING WATERWAYS AND/OR CONSTRUCTION ACTIVITIES. SEDIMENT FILTRATION BAGS SHALL NOT BE PLACED, WHOLE OR PARTIALLY, WITHIN AQUATIC AREAS (WETLANDS, STREAMS, ETC.) OR WATER CONVEYANCE FEATURES.
 - SEDIMENT FILTER BAGS SHALL BE RAISED ABOVE THE SUPPORTING GROUND ON A SURFACE, OR MATERIAL THAT ALLOWS WATER TO FLOW OUT OF THE BOTTOM OF THE BAG. THE PUMP DISCHARGE SHALL NOT EXCEED THE DESIGN DISCHARGE RATE OF THE SELECTED SEDIMENT FILTER BAG.
 - SEDIMENT FILTER BAGS SHALL MEET THE MATERIAL REQUIREMENTS OF THE ILLINOIS URBAN MANUAL, MATERIAL SPECIFICATIONS 592, TABLE 2, CLASS 1 WITH MINIMUM TENSILE STRENGTH OF 200 LBS.
 - SEDIMENT FILTER BAGS SHALL BE SIZED PER MANUFACTURER RECOMMENDATIONS AND BASED ON THE SIZED OF PUMP. MINIMUM BAG SIZE SHALL BE 10 FEET X 15 FEET WITH A USEABLE SURFACE DRAINAGE AREA OF 300 SQUARE FEET.
 - LARGEST SIZE PUMP HOSE TO BE USED WITH A SEDIMENT FILTRATION BAG IS 4-INCHES. MULTIPLE HOSES SHALL NOT BE USED TO ONE BAG.
 - SEDIMENT FILTRATION BAGS MUST BE DISPOSED OF ACCORDING TO MANUFACTURER'S INSTRUCTIONS. BAGS MAY NOT BE REUSED.

SEDIMENT CONTROL BAG FOR DEWATERING
ILLINOIS URBAN MANUAL STANDARD 830

HMA MIXTURE REQUIREMENT TABLE		
LOCATIONS:	FULL DEPTH PAVEMENT	ENTIRE PROJECT
MIXTURE USE(S):	HMA BINDER COURSE	HMA SURFACE COURSE
BINDER GRADE (PG):	PG 64-22	PG 64-22
DESIGN AIR VOIDS:	4.0% @ N50	4.0% @ N50
MIXTURE COMPOSITION: (MIXTURE GRADATION)	IL-19.0	IL-9.5
FRICITION AGGREGATE:		MIXTURE C
MIXTURE WEIGHT:	112.0 LB/SY/IN	112.0 LB/SY/IN
QUALITY MANAGEMENT PROGRAM:	QC/QA	QC/QA
SUBLOT SIZE:	N/A	N/A
DENSITY TEST METHOD:	NUCLEAR	NUCLEAR
MATERIAL TRANSFER DEVICE (REQUIRED):	NO	NO

STANDARDS

000001-08	STANDARD SYMBOLS, ABBREVIATIONS AND PATTERNS
001001-02	AREAS OF REINFORCEMENT BARS
001006	DECIMAL OF AN INCH AND OF A FOOT
280001-07	TEMPORARY EROSION CONTROL SYSTEMS
515001-04	NAME PLATE FOR BRIDGES
630001-13	STEEL PLATE BEAM GUARDRAIL
701001-02	OFF-ROAD OPERATIONS, 2L, 2W, MORE THAN 15' AWAY
701006-05	OFF-ROAD OPERATIONS, 2L, 2W, 15' TO 24" FROM PAVEMENT EDGE
701501-06	URBAN LANE CLOSURE, 2L, 2W, UNDIVIDED
701901-10	TRAFFIC CONTROL DEVICES
720001-01	SIGN PANEL MOUNTING DETAILS
BLR 21-9	TYPICAL APPLICATIONS OF TRAFFIC CONTROL DEVICES FOR CONSTRUCTION ON RURAL LOCAL HIGHWAYS
BLR 22-7	TYPICAL APPLICATIONS OF TRAFFIC CONTROL DEVICES FOR CONSTRUCTION ON RURAL LOCAL HIGHWAYS (TWO-LANE TWO WAY RURAL TRAFFIC) (ROAD CLOSED TO THRU TRAFFIC)

CHAMLIN & ASSOCIATES, INC. © 2024
Drawing Name: R:\USERS\11\11567.00 - Streator Kelly Street Bridge Replacement\CAD\PLANS\002-NOTES.dwg
Last Modified: Monday, December 23, 2024 1:17:57 PM
Plotted On: Friday, January 17, 2025 1:40:12 PM
by Kurt Decker

DRAWN BY: KED	REVISIONS			
CHECKED BY: DAH	LEVEL	BY	DATE	DESCRIPTION
DATE: 09/2024				



PERU MORRIS
OTTAWA MORTON
ILLINOIS

KELLY STREET BRIDGE REPLACEMENT
SECTION 21-00835-00-BR
LASALLE COUNTY

GENERAL NOTES

SHEET 1 of 1 SHEETS

BID SET

CURRENT AS OF: **12/16/2024**

SCALE: AS NOTED

FILE NO.: 111567.00 Y- OF **22**


CODE NO.	ITEM	UNIT	TOTAL QUANTITY	CONSTR. CODE
				BRIDGE 0010 S.N. 050-8029
20200100	EARTH EXCAVATION	CU YD	122	122
20700220	POROUS GRANULAR EMBANKMENT	CU YD	1420	1420
21001000	GEOTECHNICAL FABRIC FOR GROUND STABILIZATION	SQ YD	447	447
21101625	TOPSOIL FURNISH AND PLACE, 6"	SQ YD	326	326
25000300	SEEDING, CLASS 3	ACRE	0.25	0.25
25000400	NITROGEN FERTILIZER NUTRIENT	POUND	23	23
25000500	PHOSPHORUS FERTILIZER NUTRIENT	POUND	23	23
25000600	POTASSIUM FERTILIZER NUTRIENT	POUND	23	23
25100635	HEAVY DUTY EROSION CONTROL BLANKET	SQ YD	204	204
28000305	TEMPORARY DITCH CHECKS	FOOT	40	40
28100107	STONE RIPRAP, CLASS A4	SQ YD	56	56
28200200	FILTER FABRIC	SQ YD	56	56
30300112	AGGREGATE SUBGRADE IMPROVEMENT 12"	SQ YD	447	447
40600275	BITUMINOUS MATERIALS (PRIME COAT)	POUND	1006	1006
40600900	HOT-MIX ASPHALT BINDER COURSE (HAND METHOD), N50	TON	2	2
40600982	HOT-MIX ASPHALT SURFACE REMOVAL-BUTT JOINT	SQ YD	229	229
40600290	BITUMINOUS MATERIALS (TACK COAT)	POUND	622	622
40603080	HOT-MIX ASPHALT BINDER COURSE, IL-19.0, N50	TON	77	77

CODE NO.	ITEM	UNIT	TOTAL QUANTITY	CONSTR. CODE
				BRIDGE 0010 S.N. 050-8029
40604050	HOT-MIX ASPHALT SURFACE COURSE, 1L-9.5, MIX "C", N50	TON	164	164
44000100	PAVEMENT REMOVAL	SQ YD	377	377
44000155	HOT-MIX ASPHALT SURFACE REMOVAL, 1 1/2"	SQ YD	715	715
50100100	REMOVAL OF EXISTING STRUCTURES	EACH	1	1
50200100	STRUCTURE EXCAVATION	CU YD	1761	1761
50200400	ROCK EXCAVATION FOR STRUCTURES	CU YD	23	23
50300225	CONCRETE STRUCTURES	CU YD	142	142
50800105	REINFORCEMENT BARS	POUND	11425	11425
50800205	REINFORCEMENT BARS, EPOXY COATED	POUND	3345	3345
51500100	NAME PLATES	EACH	1	1
63200310	GUARDRAIL REMOVAL	FOOT	220	220
67100100	MOBILIZATION	L SUM	1	1
X5042143	THREE-SIDED PRECAST CONCRETE STRUCTURES 34'X12.8'	FOOT	44	44
X6026056	SANITARY MANHOLES TO BE ADJUSTED WITH NEW TYPE 1 FRAME, CLOSED LID	EACH	1	1
* X6300130	STEEL PLATE BEAM GUARDRAIL, TYPE A (SPECIAL)	FOOT	287.5	287.5
X7010216	TRAFFIC CONTROL AND PROTECTION, (SPECIAL)	L SUM	1	1
Z0013798	CONSTRUCTION LAYOUT	L SUM	1	1

* DENOTES SPECIALTY ITEM

CHAMIN & ASSOCIATES, INC. © 2024
 Drawing Name: R:\USERS\K.MORRIS\111567.00 - Sizerator, Kelly Street Bridge Replacement\CAD\PLANS\001-500.dwg
 Last Modified: Thursday, January 2, 2025 8:31:55 AM
 Plotted On: Friday, January 17, 2025 1:41:13 PM
 by: Kurt Decker

DRAWN BY: KED	REVISIONS			
CHECKED BY: DAH	LEVEL	BY	DATE	DESCRIPTION
DATE: 09/2024				



PERU MORRIS
OTTAWA MORTON
ILLINOIS

**KELLY STREET BRIDGE REPLACEMENT
SECTION 21-00835-00-BR
LASALLE COUNTY**

SUMMARY OF QUANTITIES

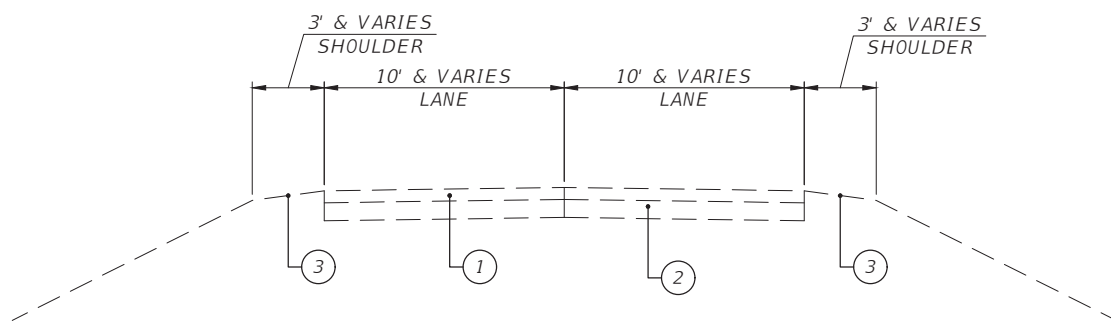
SHEET 1 of 1 SHEETS

BID SET

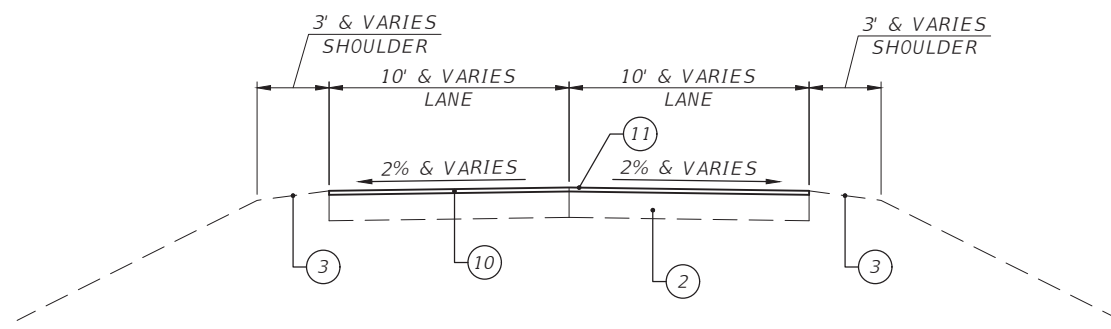
CURRENT AS OF: 12/16/2024

SCALE: AS NOTED SHEET 3

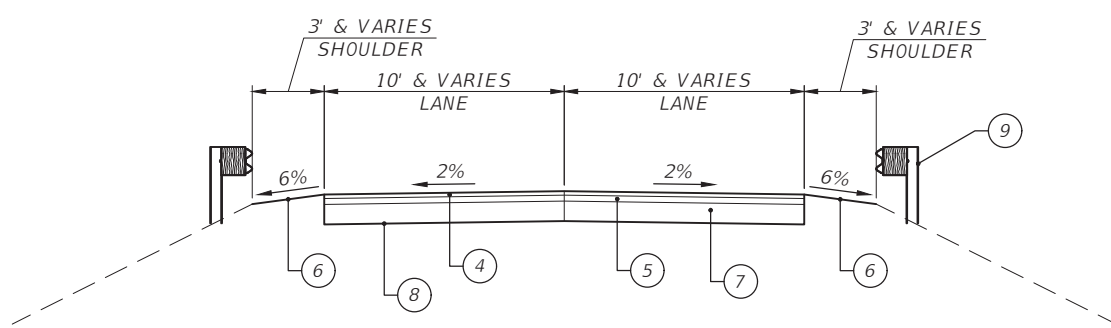
FILE NO.: 111567.00 Y- OF 22



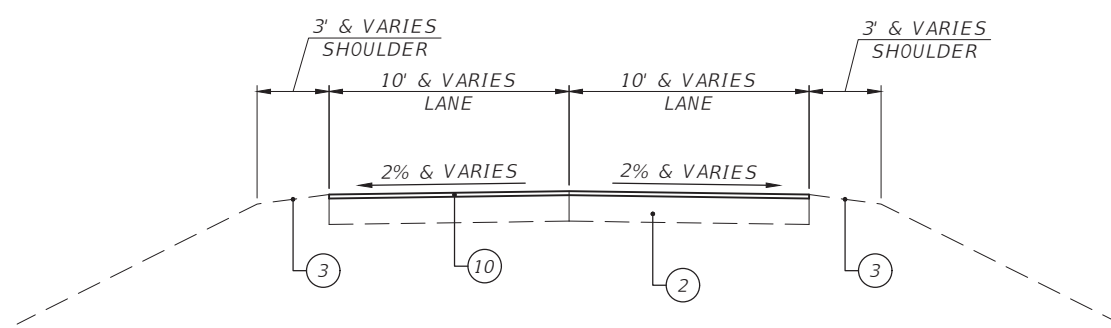
EXISTING TYPICAL SECTION
NOT TO SCALE
(LOOKING NORTH)



PROPOSED TYPICAL SECTION (MILL & OVERLAY)
NOT TO SCALE
(LOOKING NORTH)
STA. 98+34.18 TO STA. 101+62.33



PROPOSED TYPICAL SECTION
NOT TO SCALE
(LOOKING NORTH)
STA. 101+62.33 TO STA. 103+63.50



PROPOSED TYPICAL SECTION (OVERLAY)
NOT TO SCALE
(LOOKING NORTH)
STA. 103+63.50 TO STA. 106+07.48

LEGEND

- ① EXISTING HMA PAVEMENT, 5"
- ② EXISTING AGGREGATE BASE COURSE, 12"
- ③ EXISTING EARTHEN SHOULDER
- ④ PROPOSED HMA SURFACE COURSE, 1L-9.5, MIX 'C', N50, 2"
- ⑤ PROPOSED HMA BINDER COURSE, 1L-19.0, N50, 3"
- ⑥ PROPOSED EARTHEN SHOULDER
- ⑦ PROPOSED AGGREGATE SUBGRADE IMPROVEMENT, 12"
- ⑧ PROPOSED GEOTECHNICAL FABRIC FOR GROUND STABILIZATION
- ⑨ PROPOSED STEEL PLATE BEAM GUARDRAIL
- ⑩ PROPOSED HMA SURFACE COURSE, 1L-9.5, MIX 'C', N50, 1 1/2"
- ⑪ PROPOSED HMA SURFACE MILLING, 1 1/2"

EARTHWORK SCHEDULE							
LOCATION	20200100 EARTH EXCAVATION *	50200100 STRUCTURE EXCAVATION *	50200400 ROCK EXCAVATION FOR STRUCTURES *	EXCAVATION ADJUSTED FOR SHRINKAGE (15%)	EMBANKMENT * (PAID AS EARTH & STRUCTURE EXCAVATION)	EARTHWORK BALANCE WASTE (+) OR SHORTAGE (-)	TOPSOIL FURNISH & PLACE, 6" (PAID BY SQ YD)
	(CU YD)	(CU YD)	(CU YD)	(CU YD)	(CU YD)	(CU YD)	(CU YD)
ROADWAY							
STA 101+62.33 to STA 102+35	55	1055	8	972	365	607	0
STA 102+75 to STA 103+63.50	67	706	15	685	245	440	0
3-SIDED PRECAST STRUCTURE							
STA 102+35 to STA 102+75	0	0	0	0	69	-69	54
TOTALS	122	1761	23	1657	679	978	54

* EXCAVATION MATERIALS TO BE USED AS EMBANKMENT WITH SHRINKAGE FACTOR AS NOTED.

POROUS GRANULAR EMBANKMENT SCHEDULE	
LOCATION	20700220 POROUS GRANULAR EMBANKMENT
	(CU YD)
ROADWAY	
STA 101+62.33 to STA 102+35	690
STA 102+75 to STA 103+63.50	461
DIRECTLY ABOVE 3-SIDED PRECAST STRUCTURE	
STA 102+35 to STA 102+75	269
TOTALS	1420

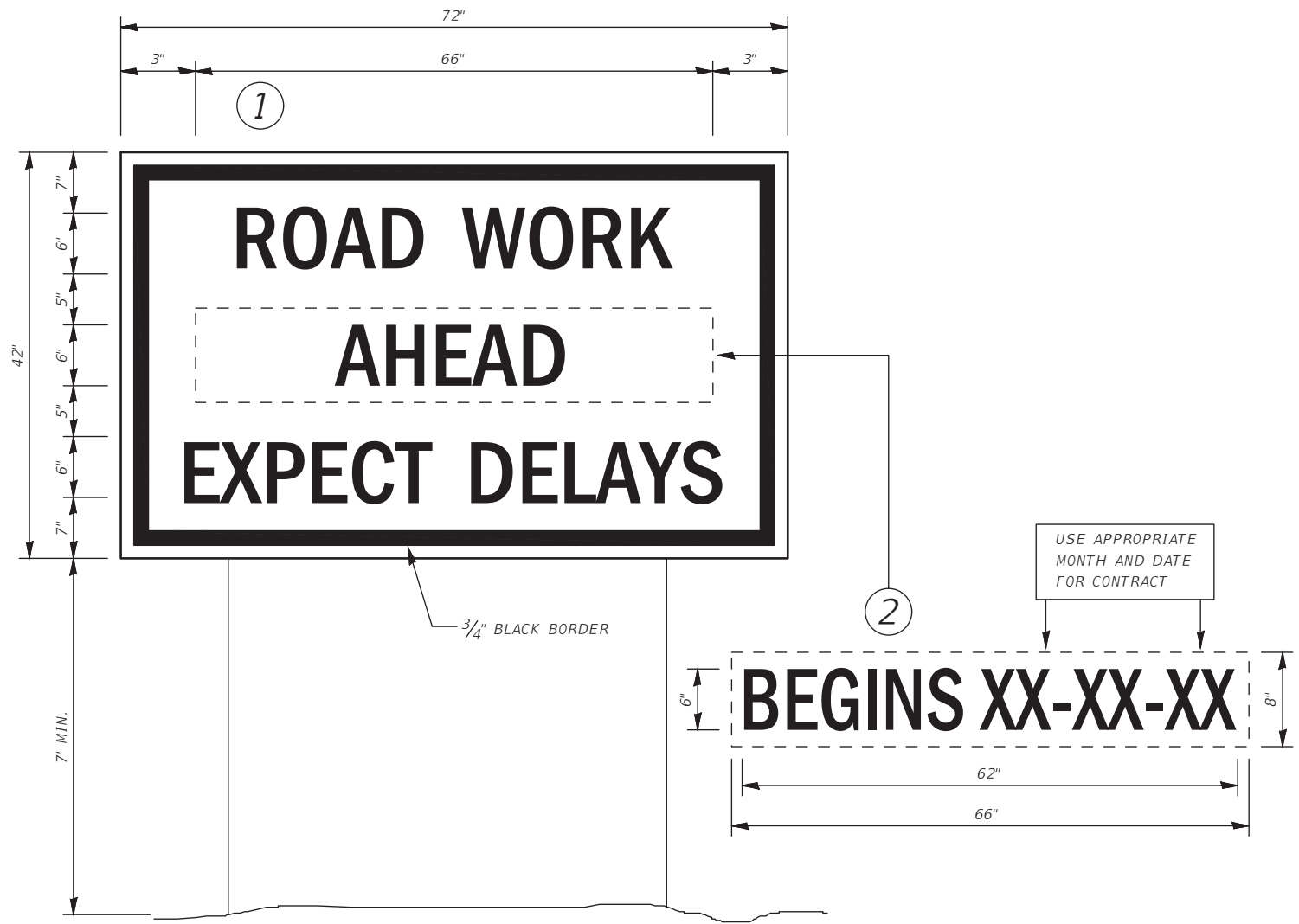
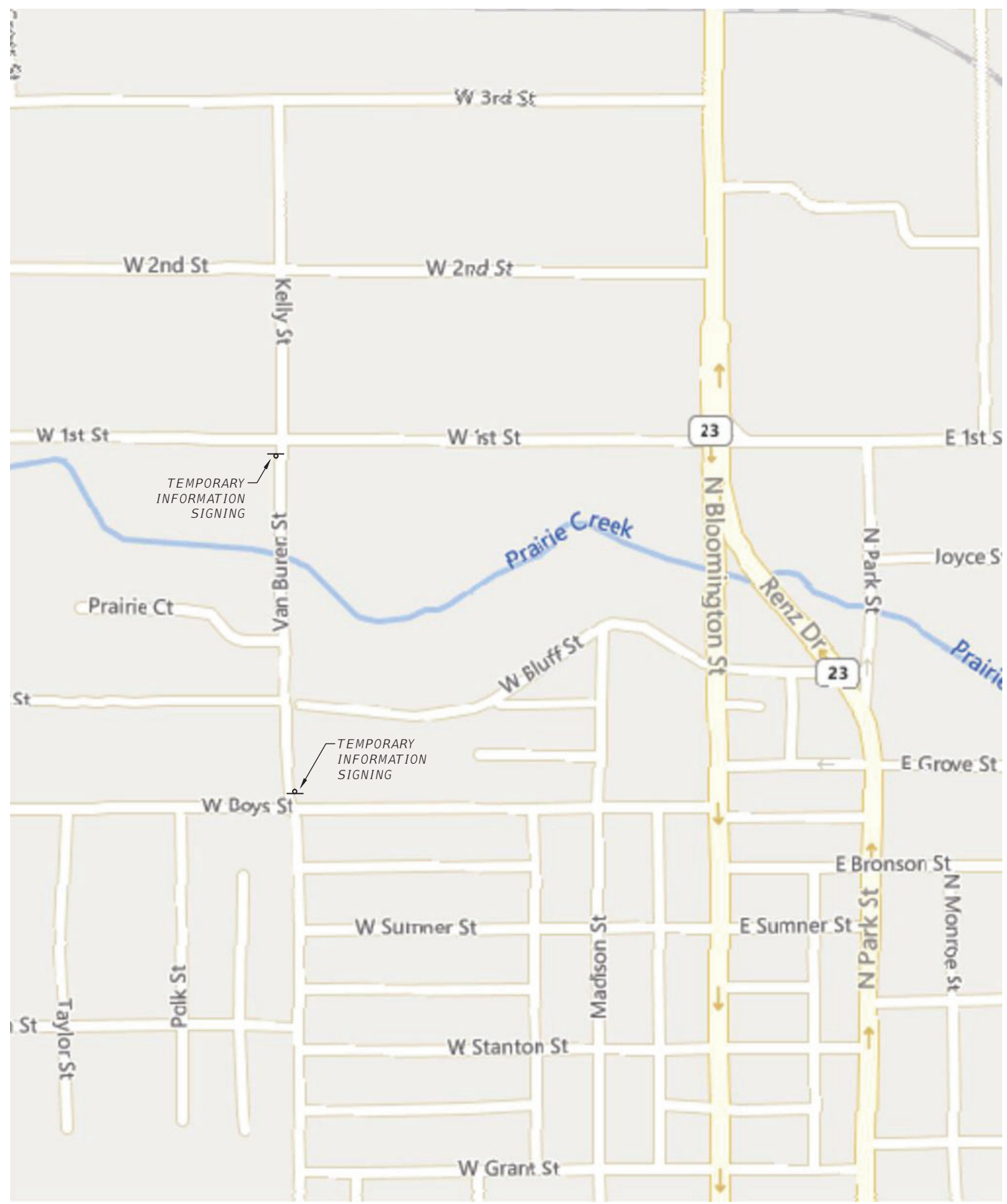
CHAMLIN & ASSOCIATES, INC. © 2024
Drawing Name: R:\USERS\1111567\00 - Stretcor Kelly Street Bridge Replacement\CAD\PLANS\04-TYP_SECS.dwg Last Modified: Monday, December 23, 2024 1:16:53 PM Plotted On: Friday, January 17, 2025 1:42:21 PM by Kurt Decker

DRAWN BY: KED	LEVEL	BY	DATE	REVISIONS	DESCRIPTION
CHECKED BY: DAH					
DATE: 09/2024					

PERU MORRIS
OTTAWA MORTON
ILLINOIS

KELLY STREET BRIDGE REPLACEMENT
SECTION 21-00835-00-BR
LASALLE COUNTY

TYPICAL SECTIONS
SHEET 1 of 1 SHEETS



TEMPORARY INFORMATION SIGNING

- NOTES:**
1. USE 6" D BLACK LETTERING ON FLUORESCENT ORANGE BACKGROUND.
 2. ERECT SIGNS AT LOCATIONS IN ADVANCE OF THE "ROAD CONSTRUCTION AHEAD" SIGNS AS DIRECTED BY THE ENGINEER.
 3. ERECT SIGN 1 WITH INSTALLED PANEL 2 A MINIMUM OF ONE WEEK PRIOR TO THE START OF THE ROAD CLOSURE.
 4. REMOVE PANEL 2 ON THAT DATE.
 5. SEE SPECIAL PROVISION "TEMPORARY INFORMATION SIGNING" FOR ADDITIONAL INFORMATION.

CHAMLIN & ASSOCIATES, INC. © 2024
 Drawing Name: R:\USERS\11\11567.00 - Sireator Kelly Street Bridge Replacement\CAD\PLANS\005-TEMP SIGNING.dwg - Last Modified: Friday, December 13, 2024 3:27:19 PM - Plotted On: Wednesday, December 18, 2024 4:20:35 PM - by Kurt Decker

DRAWN BY: KED	REVISIONS			
CHECKED BY: DAH	LEVEL	BY	DATE	DESCRIPTION
DATE: 09/2024				

PERU MORRIS
OTTAWA MORTON
ILLINOIS

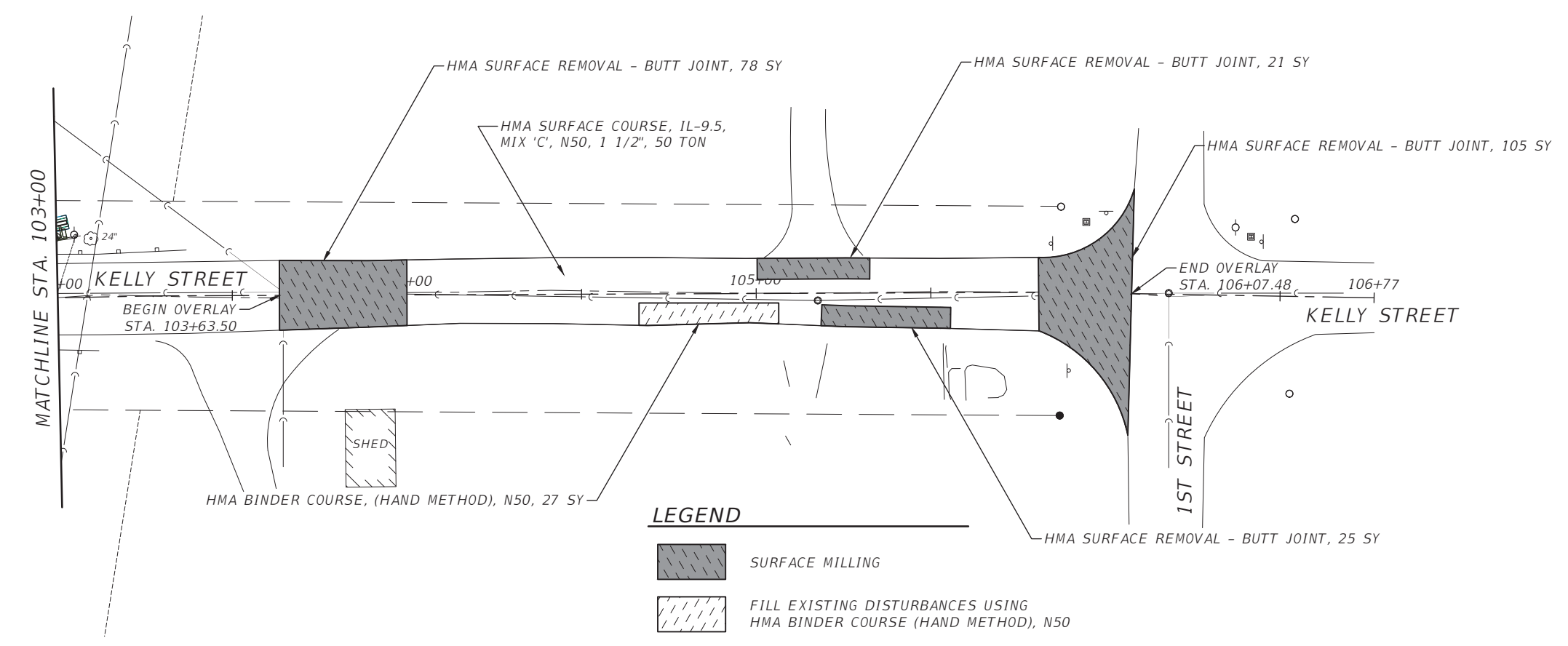
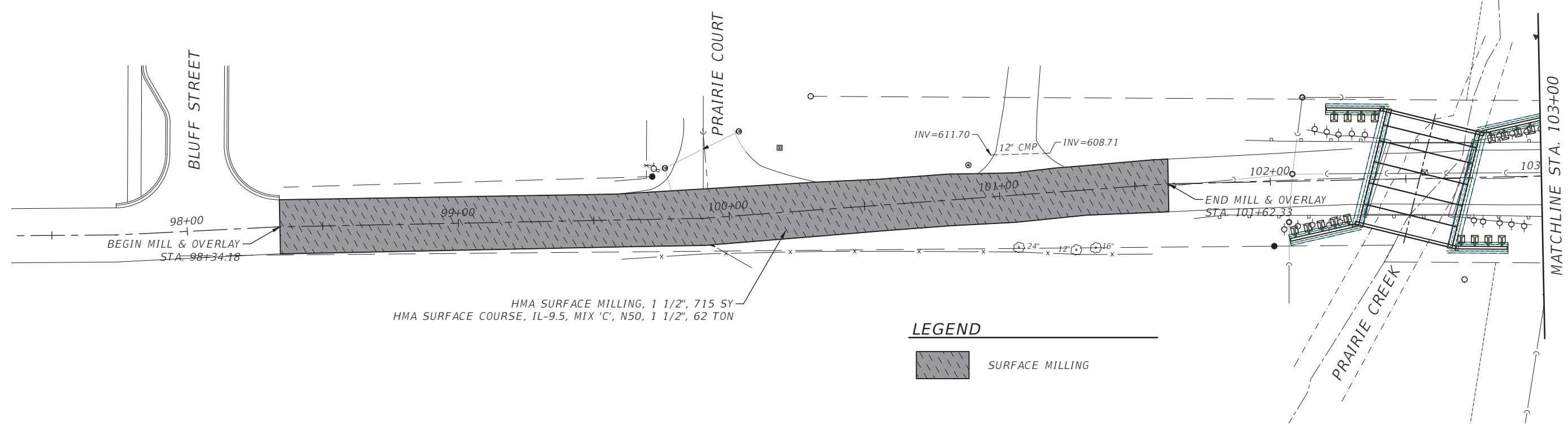
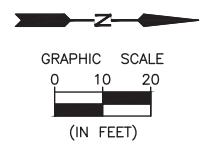
KELLY STREET BRIDGE REPLACEMENT
SECTION 21-00835-00-BR
LASALLE COUNTY

TEMPORARY INFORMATION SIGNING

SHEET 1 of 1 SHEETS

BID SET	CURRENT AS OF: 12/16/2024	
	SCALE: AS NOTED	SHEET 5
	FILE NO.: 111567.00 Y-	OF 22

F.A.S. RTE.	SECTION	COUNTY	TOTAL SHEETS	SHEET NO.
	21-00835-00-BR	LASALLE	22	6
		ILLINOIS	CONTRACT NO. 87853	



CHAMLIN & ASSOCIATES, INC. © 2024
 Drawing Name: R:\USERS\11\11567.00 - Sraitor Kelly Street Bridge Replacement\CAD\PLANS\06-OVERLAY.dwg
 Last Modified: Monday, December 16, 2024 10:57:46 AM
 Plotted On: Wednesday, December 18, 2024 4:20:42 PM by Kurt Decker

DRAWN BY: KED	REVISIONS			
CHECKED BY: DAH	LEVEL	BY	DATE	DESCRIPTION
DATE: 09/2024				

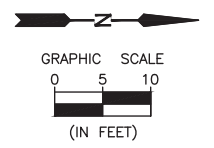
PERU MORRIS
 OTTAWA MORTON
 ILLINOIS

KELLY STREET BRIDGE REPLACEMENT
SECTION 21-00835-00-BR
LASALLE COUNTY

MILL AND OVERLAY PLAN
STA. 98+34.18 TO STA. 101+63.33
 SHEET 1 of 1 SHEETS

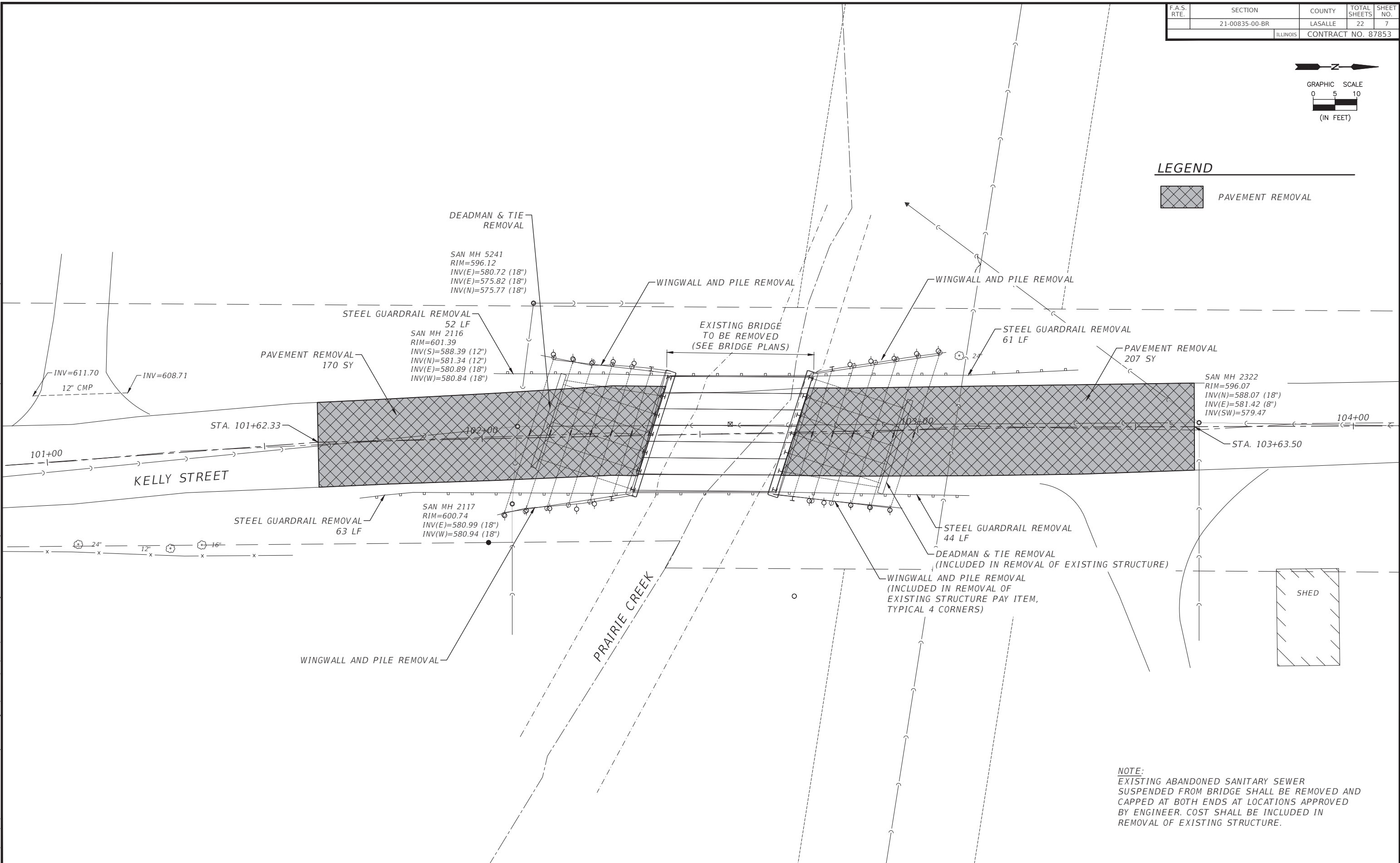
BID SET	CURRENT AS OF: 12/16/2024	
	SCALE: AS NOTED	SHEET 6
	FILE NO.: 111567.00 Y-	OF 22

F.A.S. RTE.	SECTION	COUNTY	TOTAL SHEETS	SHEET NO.
	21-00835-00-BR	LASALLE	22	7
		ILLINOIS	CONTRACT NO. 87853	



LEGEND

PAVEMENT REMOVAL



NOTE:
 EXISTING ABANDONED SANITARY SEWER SUSPENDED FROM BRIDGE SHALL BE REMOVED AND CAPPED AT BOTH ENDS AT LOCATIONS APPROVED BY ENGINEER. COST SHALL BE INCLUDED IN REMOVAL OF EXISTING STRUCTURE.

CHAMLIN & ASSOCIATES, INC. © 2024
 Drawing Name: R:\USERS\111\11567\00 - Sreator Kelly Street Bridge Replacement\CAD\PLANS\007-REMOVAL.dwg
 Last Modified: Friday, December 13, 2024 3:31:00 PM
 Plotted On: Wednesday, December 18, 2024 4:20:46 PM
 By: Kurt Decker

DRAWN BY: KED	REVISIONS			
CHECKED BY: DAH	LEVEL	BY	DATE	DESCRIPTION
DATE: 09/2024				

PERU MORRIS
 OTTAWA MORTON
 ILLINOIS

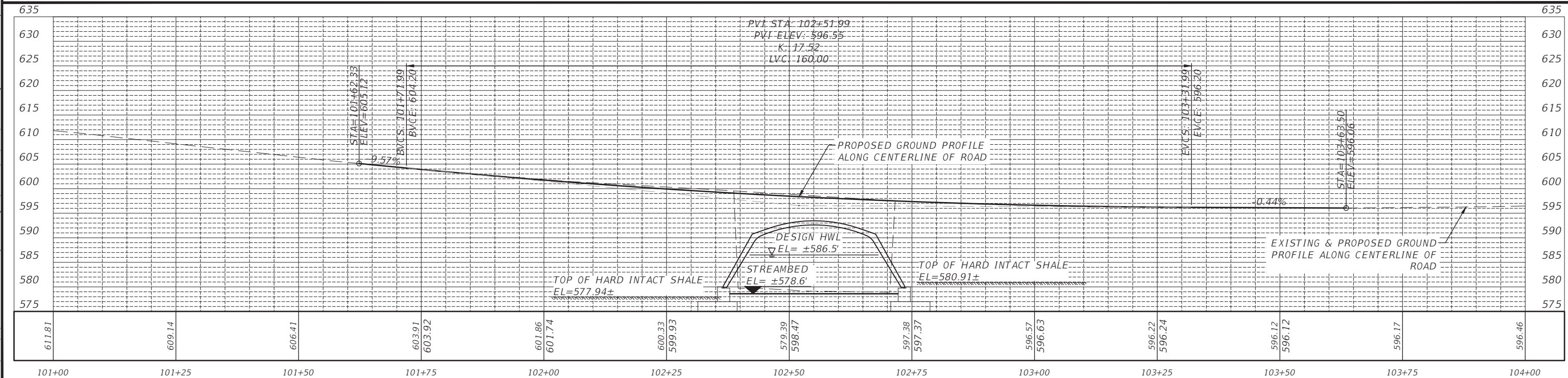
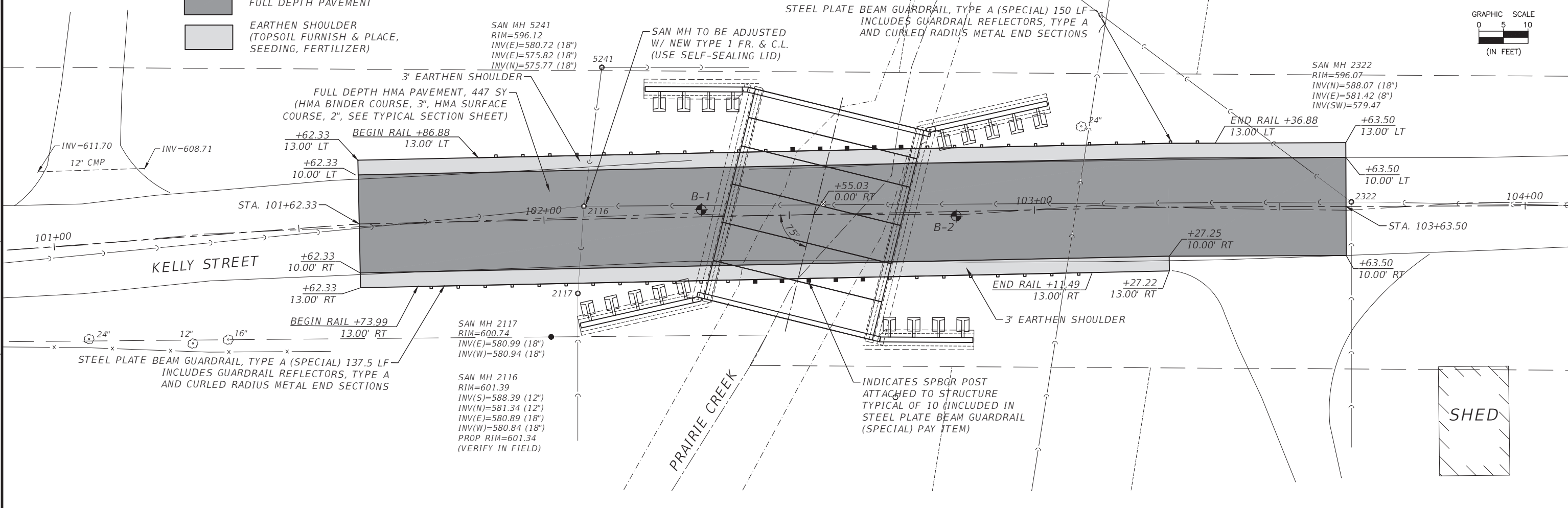
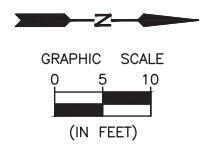
KELLY STREET BRIDGE REPLACEMENT
SECTION 21-00835-00-BR
LASALLE COUNTY

REMOVAL PLAN
 SHEET 1 of 1 SHEETS

BID SET	CURRENT AS OF: 12/16/2024	
	SCALE: AS NOTED	SHEET 7
	FILE NO.: 111567.00 Y-	OF 22

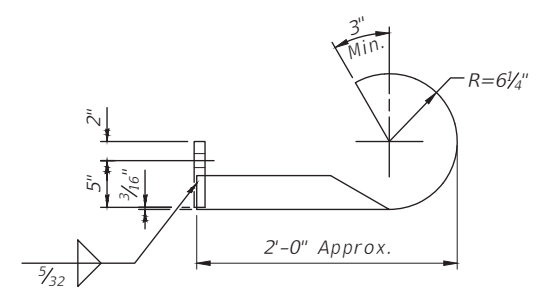
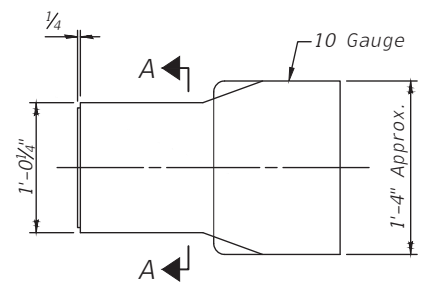
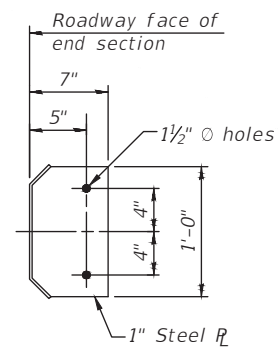
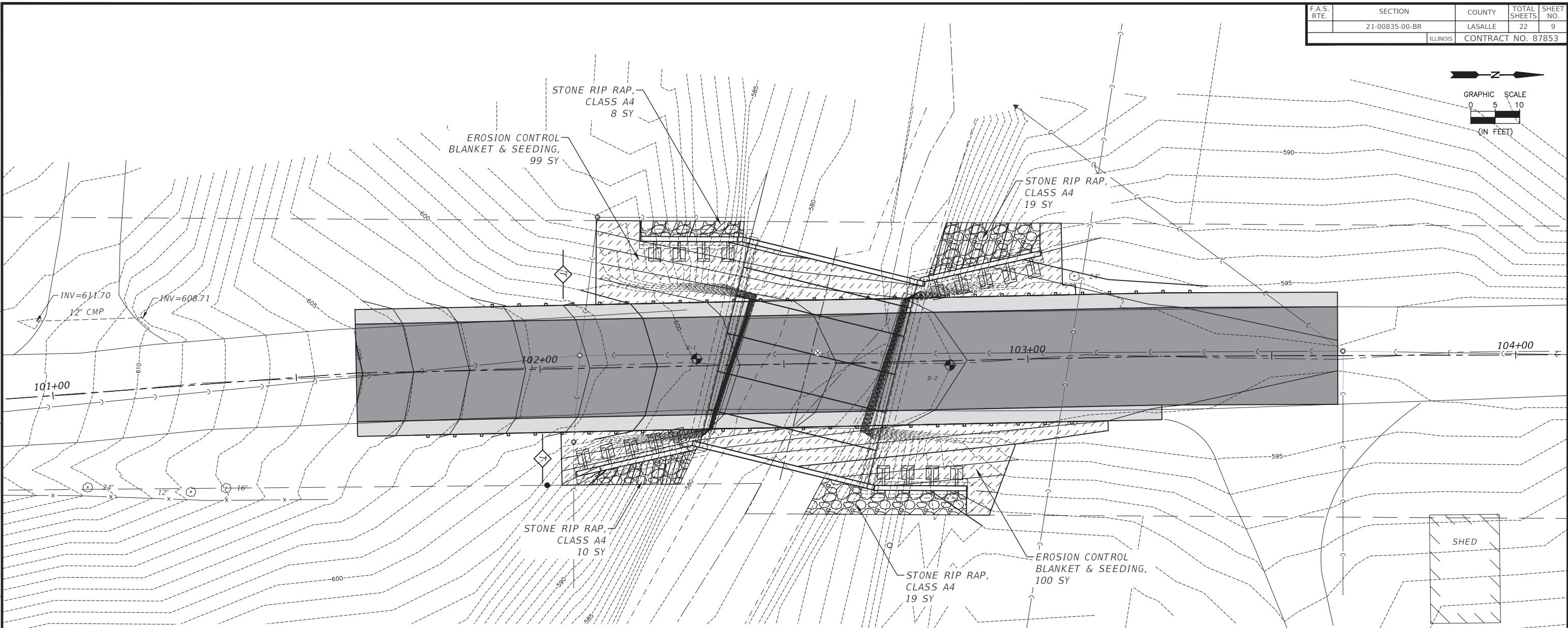
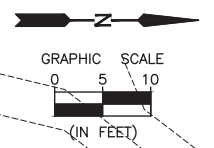
LEGEND

- FULL DEPTH PAVEMENT
- EARTHEN SHOULDER (TOPSOIL FURNISH & PLACE, SEEDING, FERTILIZER)



CHAMLIN & ASSOCIATES, INC. © 2024
 Drawing Name: R:\USERS\1111567\00 - Sreator Kelly Street Bridge Replacement\CAD\PLANS\08-PP01.dwg
 Last Modified: Monday, December 16, 2024 11:19:40 AM
 Plotted On: Wednesday, December 18, 2024 4:20:56 PM by Kurt Decker

F.A.S. RTE.	SECTION	COUNTY	TOTAL SHEETS	SHEET NO.
	21-00835-00-BR	LASALLE	22	9
		ILLINOIS	CONTRACT NO. 87853	



SECTION A-A

ELEVATION

PLAN

DETAILS OF CURLED END SECTION
 (Cost of Curled End Sections and Terminal Markers - Direct Applied included with Steel Plate Beam Guardrail, Type A (Special))

LEGEND

	EROSION CONTROL BLANKET AND SEEDING CLASS 3
	STONE RIP RAP, CLASS A4
	TEMPORARY DITCH CHECK, 20 LF EACH

NOTE:
REFER TO EROSION CONTROL NOTES ON SHEET 2 OF 22.

CHAMLIN & ASSOCIATES, INC. © 2024
 Drawing Name: R:\USERS\1111567\00 - Sreator Kelly Street Bridge Replacement\CAD\PLANS\09-EROSION.dwg Last Modified: Monday, December 16, 2024 11:25:56 AM Plotted On: Wednesday, December 18, 2024 4:21:02 PM by Kurt Decker

DRAWN BY: KED	REVISIONS			
CHECKED BY: DAH	LEVEL	BY	DATE	DESCRIPTION
DATE: 09/2024				

PERU MORRIS
OTTAWA MORTON
ILLINOIS

KELLY STREET BRIDGE REPLACEMENT
SECTION 21-00835-00-BR
LASALLE COUNTY

EROSION CONTROL PLAN
 SHEET 1 of 1 SHEETS

BID SET	CURRENT AS OF: 12/16/2024	
	SCALE: AS NOTED	SHEET 9
	FILE NO.: 111567.00 Y-	OF 22

F.A.S. RTE.	SECTION	COUNTY	TOTAL SHEETS	SHEET NO.
	21-00835-00-BR	LASALLE	22	10
		ILLINOIS	CONTRACT NO. 87853	

GENERAL NOTES

Plan dimensions and details relative to existing plans are subject to nominal construction variations. The Contractor shall field verify existing dimensions and details affecting new construction and make necessary approved adjustments prior to construction or ordering of materials. Such variations shall not be cause for additional compensation for a change in scope of the work, however, the Contractor will be paid for the quantity actually furnished at the unit price bid for the work.

Layout of the slope protection system may be varied to suit ground conditions in the field as directed by the Engineer.

All proposed construction activities shall be in accordance with Statewide Permit 12 Nationwide Permit 14 of the US Army Corps of Engineers.

Contractor shall be responsible for diverting the water flow from the construction area using a method meeting the approval of the Engineer and included in the unit cost of Three-Sided Precast Concrete Structures.

Precast wingwalls and associated drainage components shall be included in the cost of Three-Sided Precast Concrete Structures.

The existing structure was investigated for presence of asbestos during the preliminary design phase and was found to NOT contain asbestos. Documentation confirming this finding was provided to the Illinois Department of Transportation at that time to clear this project for approval.

The footing design is based on the following maximum reactions applied at the top of the footing/pedestal wall:

Exterior footings: 29.6 kip/foot (Vertical), 9.3 kip/foot (Horizontal).

The Contractor shall verify that the selected structure meets these design criteria parameters. If the design parameters are exceeded, a complete footing design with calculations, details and the required seals shall be submitted for review and approval.

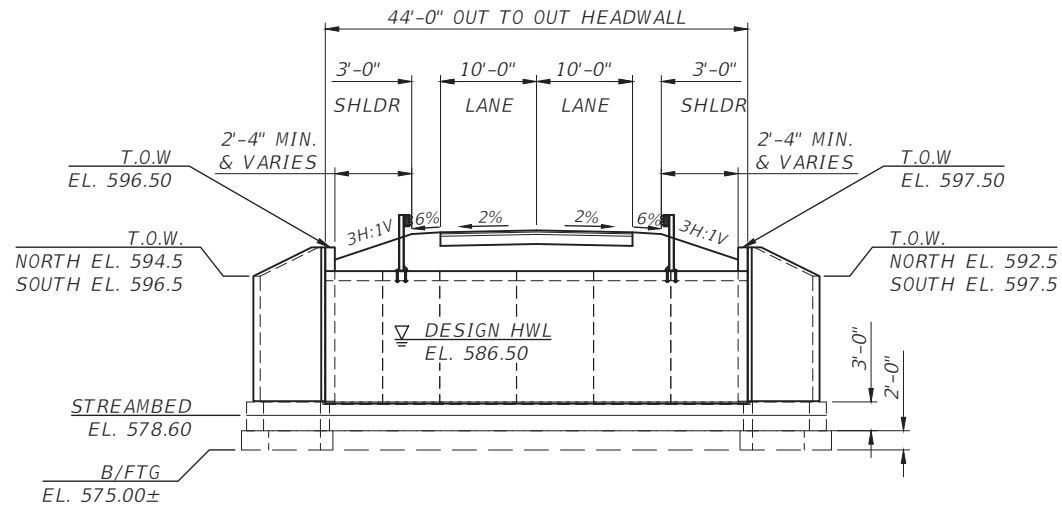
Existing Structure No: 050-8488

Single Span (35'-1 1/2"± Back of Abutment to Back of Abutment) Precast Concrete Channel Beam Bridge, 26'-3" Out to Out of Deck with a 17°30' Skew, Steel Bridge Rail

Existing Structure To Be Removed

TOTAL BILL OF MATERIAL

ITEM	UNIT	TOTAL
Porous Granular Embankment	Cu. Yd.	1420
Stone Riprap, Class A4	Sq. Yd.	56
Filter Fabric	Sq. Yd.	56
Removal of Existing Structures	Each	1
Structure Excavation	Cu. Yd.	1761
Rock Excavation for Structures	Cu. Yd.	23
Concrete Structures	Cu. Yd.	142
Reinforcement Bars	Pound	11,425
Reinforcement Bars, Epoxy Coated	Pound	3,345
Name Plates	Each	1
Three-Sided Precast Concrete Structures (34' x 12.8')	Foot	44



PROPOSED LONGITUDINAL SECTION

Looking North
(Dimensions are at Right Angles to Roadway Unless Noted)

INDEX OF SHEETS

- General Plan and Elevation
- 3. Foundation Details
- 5. Soil Borings
- 13. Existing Plans

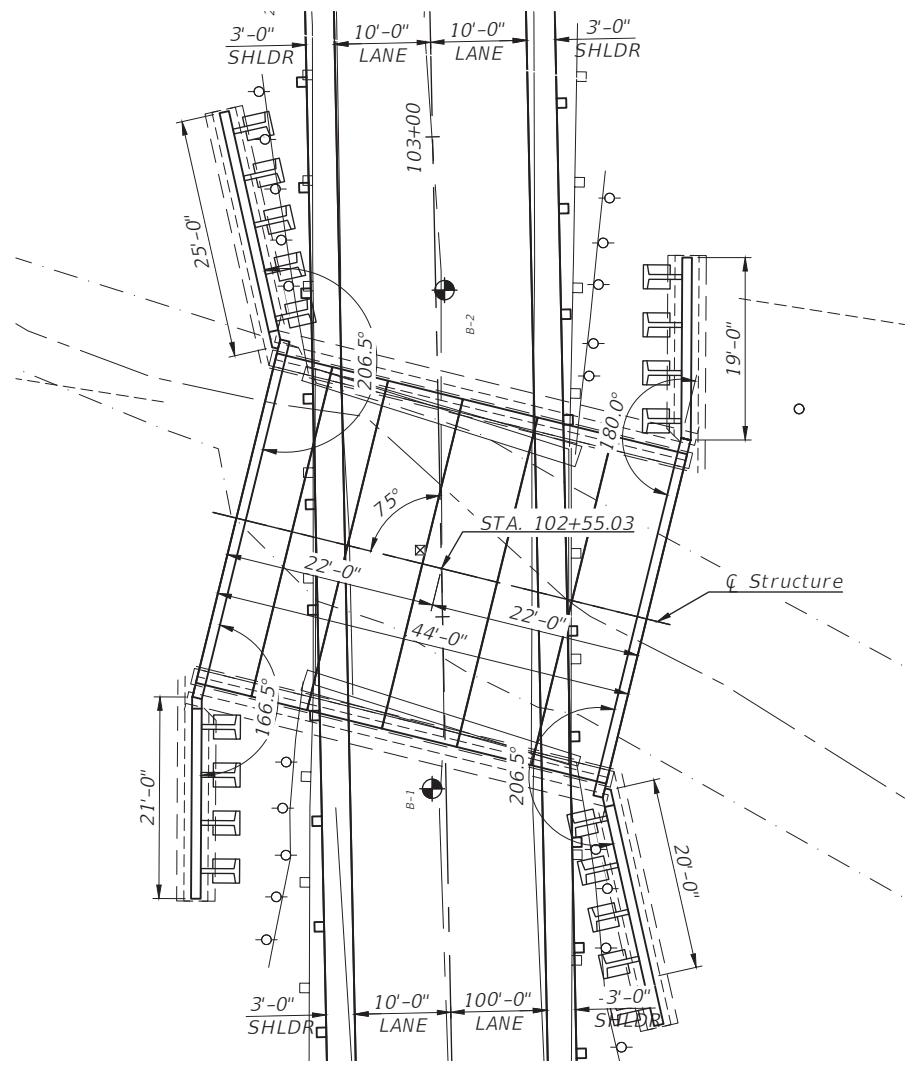
DESIGN FILL HEIGHTS

Minimum: 4.8 feet
Maximum: 8.1 feet

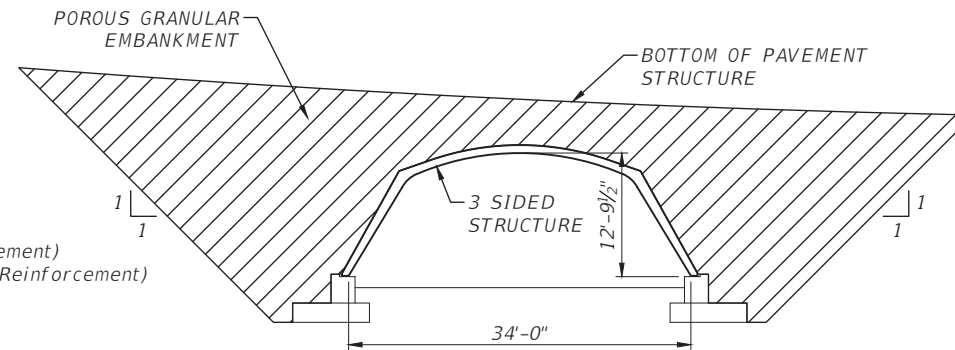
STA. 102+55.03
BUILT 2025 BY
CITY OF STREATOR
KELLY ST (MS 7730)
SEC. 21-00835-00-BR
LOADING HL-93
STR. NO. 050-8029

NAME PLATE

See Std. 515001



PLAN VIEW



BACKFILL DETAIL

DESIGN STRESSES

PRECAST UNITS

$f'_c = 4,500$ psi
 $f_y = 60,000$ psi (Bar Reinforcement)
 $f_y = 65,000$ psi (Welded Wire Reinforcement)

FIELD UNITS

$f'_c = 3,500$ psi
 $f_y = 60,000$ psi (Reinforcement)

SEISMIC DATA

Seismic Performance Zone (SPZ) = 1
Design Spectral Acceleration at 1.0 Sec (S_{D1}) = 0.117
Design Spectral Acceleration at 0.2 Sec (S_{D5}) = 0.148
Soil Site Class = D (Assumed)

DESIGN SPECIFICATIONS

2020 AASHTO LRFD Bridge Design Specifications
Customary U.S. Units, 9th Edition

LOADING HL-93

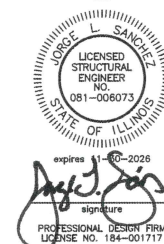
50 #/SF future wearing surface allowed

WATERWAY INFORMATION

Drainage Area = 6.91 sq. mi.		Low Beam Elev. 595.5'/592.6' (Exist/Prop)							
Flood	Freq. Yr.	Q C.F.S.	Opening Sq. Ft.		Nat. H.W.E.	Head - Ft.		Headwater El.	
			Exist.	Prop.		Exist.	Prop.	Exist.	Prop.
Design	10	1290	195	209	585.3	0.3	0.2	585.7	585.5
Base	30	1859	234	243	586.5	0.6	0.5	587.1	587.0
	100	2450	267	271	587.6	1.0	0.9	588.6	588.5
Max. Calc.	200	2820	285	285	588.2	1.3	1.2	589.4	589.3

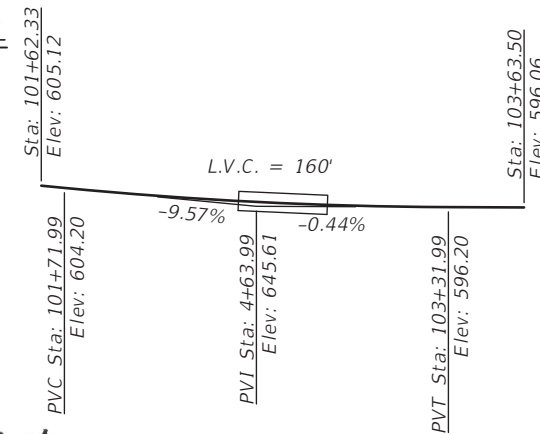
Max. H.W.E.: Unknown
Exist. 10 Year Velocity: 7.81 (ft./sec.)
Prop. 10 Year Velocity: 6.92 (ft./sec.)
Max. H.W.E. Date: Unknown

12-16-24
date

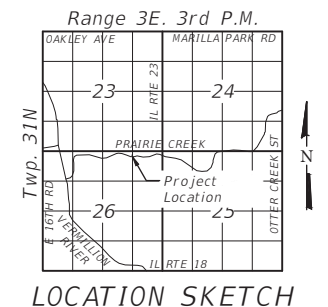


PROFILE GRADE

(Along Center Roadway)



I certify that to the best of knowledge, information and belief, this bridge design is structurally adequate for the design loading shown on the plans. The design is an economical one for the style of structure and complies with requirements of the current AASHTO LRFD Bridge Design Specifications.



GENERAL PLAN AND ELEVATION

KELLY STREET (MS 7730)
OVER PRAIRIE CREEK
SEC. 21-00835-00-BR
LASALLE COUNTY
STATION 102+55.03
S.N. 050-8488 (EXIST)
S.N. 050-8029 (PROP)

CHAMLIN & ASSOCIATES, INC. © 2024. Drawing Name: R:\USERS\JLS\111567.00 - Streator Kelly Street Bridge Replacement\CAD\PLANS\010-GPE.dwg. Last Modified: Wednesday, December 18, 2024 1:47:40 PM. Plotted On: Wednesday, December 18, 2024 4:21:13 PM. By: Kurt Decker

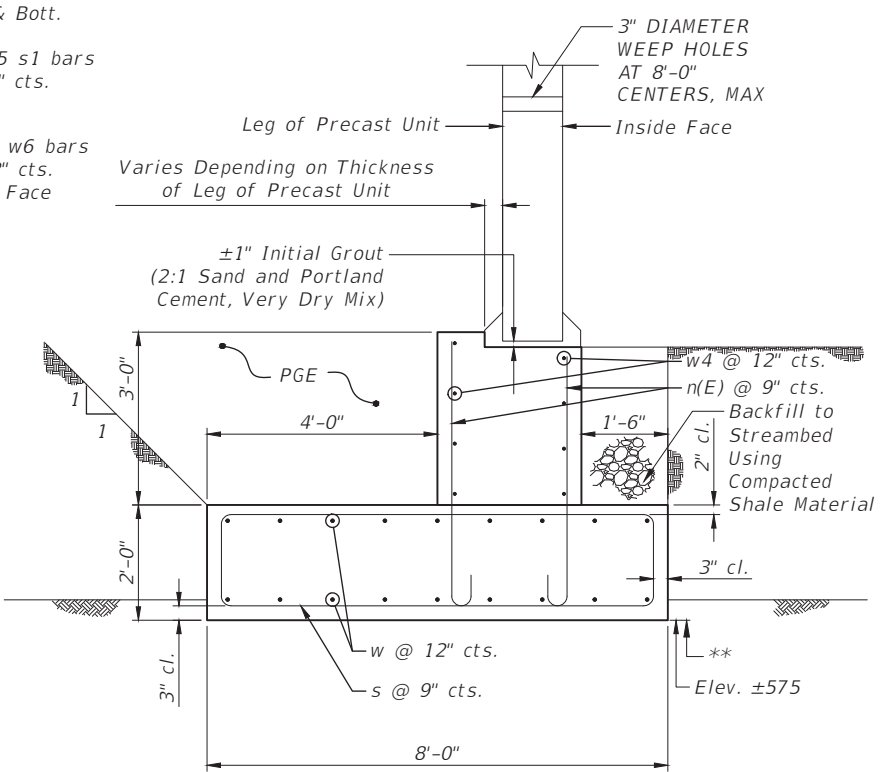
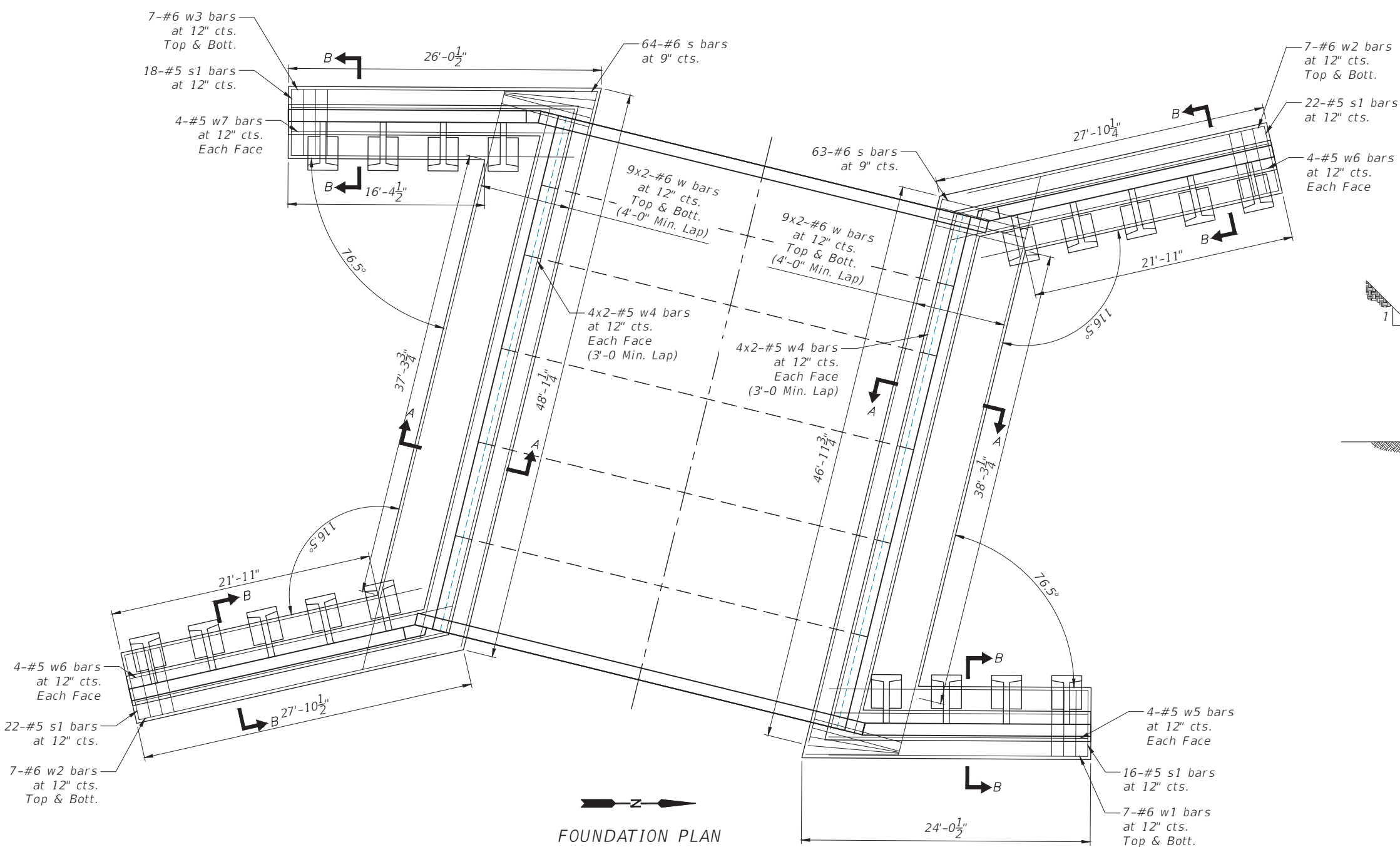
DRAWN BY: KED	REVISIONS			
CHECKED BY: JLS	LEVEL	BY	DATE	DESCRIPTION
DATE: 09/2024				

PERU MORRIS
OTTAWA MORTON
ILLINOIS

KELLY STREET BRIDGE REPLACEMENT
SECTION 21-00835-00-BR
LASALLE COUNTY

GENERAL PLAN AND ELEVATION
S.N. 050-8029
SHEET 1 of 13 SHEETS

BID SET
CURRENT AS OF: 12/16/2024
SCALE: AS NOTED
FILE NO.: 111567.00 Y-
SHEET 10 OF 22



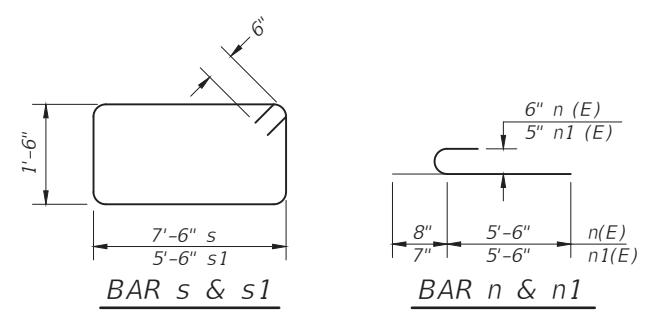
SECTION A-A

FOOTING BILL OF MATERIAL

(Two structure footings and four wingwall footings)

Bar	No.	Size	Length	Shape
n(E)	254	#6	6'-2"	┌
n1(E)	156	#5	6'-1"	┌
s	127	#6	19'-0"	□
s1	78	#5	15'-0"	□
w	72	#6	27'-2"	—
w1	14	#6	21'-1"	—
w2	28	#6	25'-6"	—
w3	14	#6	23'-7"	—
w4	32	#5	24'-5"	—
w5	8	#5	21'-6"	—
w6	16	#5	26'-7"	—
w7	8	#5	23'-2"	—
Concrete Structures		Cu Yd	142	
Reinforcement Bars		Pound	11425	
Reinforcement Bars, Epoxy Coated		Pound	3345	
Rock Excavation for Structures		Cu Yd	23	

Reinforcement Bars designated (E) shall be epoxy coated.



** Notes:
Outside the limits of the existing footings, the new footings shall be set 6" minimum into hard intact shale. The thickness of the footings shall be increased if required to maintain this embedment. Within the limits of the existing footings, the thickness of the footings shall be increased, if necessary, such that the bottom of the new footings are set 6" below the bottom of the existing footings.

FOUNDATION PLAN

CHAMLIN & ASSOCIATES, INC. © 2024
 Drawing Name: R:\USERS\1111567\00 - Sreator Kelly Street Bridge Replacement\CAD\PLANS\011-FNDN.DTL5.dwg
 Last Modified: Wednesday, December 18, 2024 4:18:31 PM
 Plotted On: Wednesday, December 18, 2024 4:21:20 PM by Kurt Decker

DRAWN BY: KED	LEVEL	BY	DATE	REVISIONS	DESCRIPTION
CHECKED BY: JLS					
DATE: 09/2024					


 PERU MORRIS
 OTTAWA MORTON
 ILLINOIS

KELLY STREET BRIDGE REPLACEMENT
SECTION 21-00835-00-BR
LASALLE COUNTY

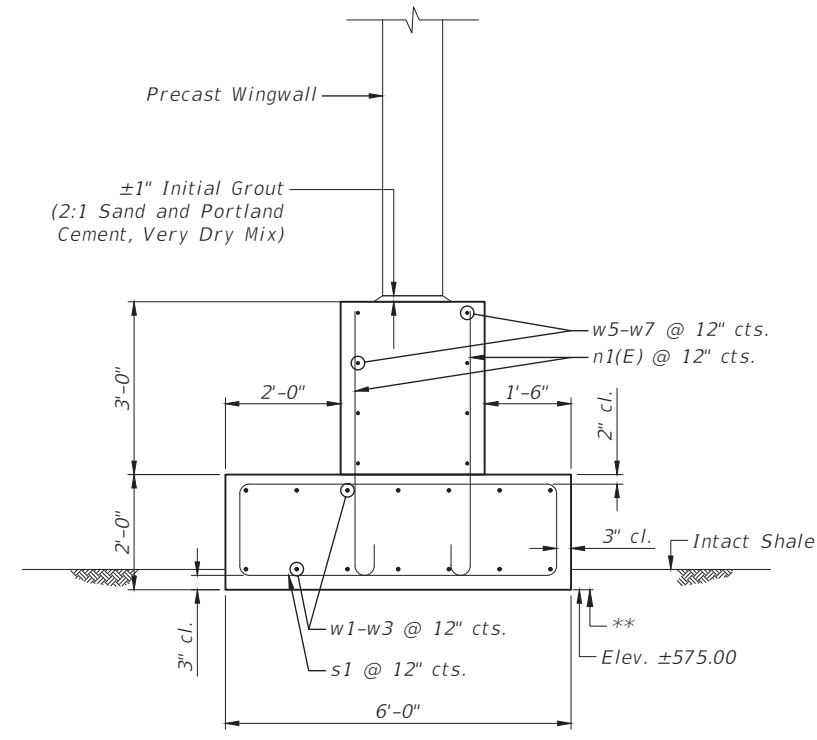
FOUNDATION DETAILS (1 OF 2)
S.N. 050-8029
 SHEET 2 of 13 SHEETS

BID SET
 CURRENT AS OF: 12/16/2024
 SCALE: AS NOTED
 FILE NO.: 111567.00 Y- OF 22

WORK THIS SHEET WITH SHEET 3 OF 13.

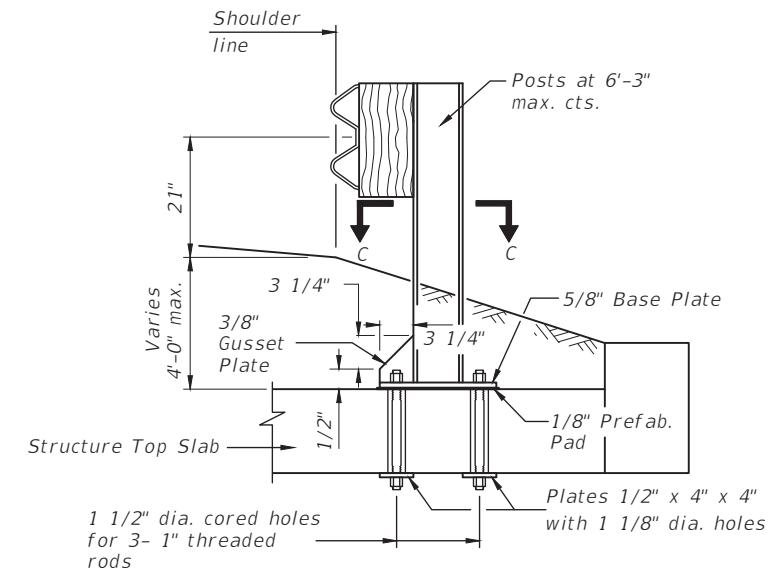
Posts shall be installed plumb by mounting baseplate flush against Structure Top Slab and cutting posts to match slope.

For quantity of steel plate guardrail attached to structure see roadway plans.



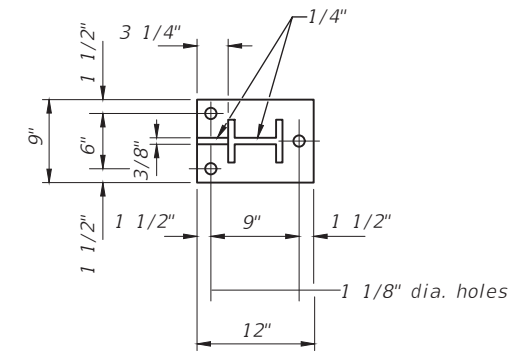
SECTION B-B

** Notes:
 Outside the limits of the existing footings, the new footings shall be set 6" minimum into hard intact shale. The thickness of the footings shall be increased if required to maintain this embedment. Within the limits of the existing footings, the thickness of the footings shall be increased, if necessary, such that the bottom of the new footings are set 6" below the bottom of the existing footings.

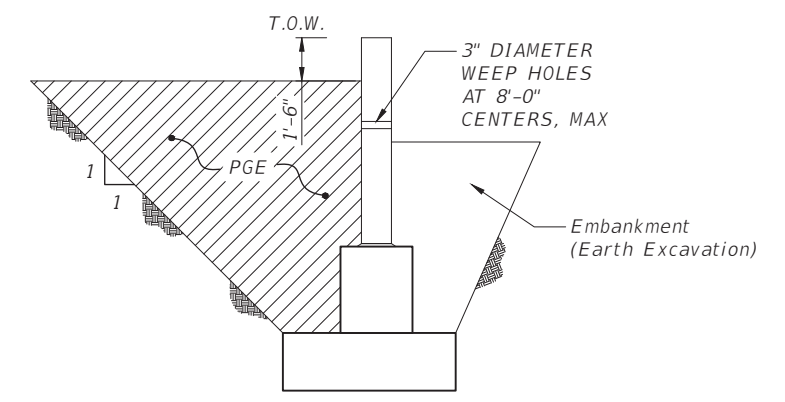


GUARDRAIL ATTACHMENT DETAIL

Note: Guardrail attachments shall be included in Steel Plate Beam Guardrail pay item



SECTION C-C



BACKFILL & DRAINAGE RETAINING WALL DETAIL

WORK THIS SHEET WITH SHEET 2 OF 13.

CHAMLIN & ASSOCIATES, INC. © 2024
 Drawing Name: R:\USERS\11\111567.00 - Sreator Kelly Street Bridge Replacement\CAD\PLANS\011-FNDN.DTL5.dwg
 Last Modified: Wednesday, December 18, 2024 4:18:31 PM
 Plotted On: Wednesday, December 18, 2024 4:21:23 PM by Kurt Decker

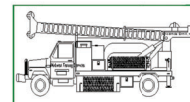
DRAWN BY: PDF	REVISIONS			
	LEVEL	BY	DATE	DESCRIPTION
CHECKED BY: JLS				
DATE: 09/2024				

PERU MORRIS
 OTTAWA MORTON
 ILLINOIS

KELLY STREET BRIDGE REPLACEMENT
SECTION 21-00835-00-BR
LASALLE COUNTY

FOUNDATION DETAILS (2 OF 2)
S.N. 050-8029
 SHEET 3 of 13 SHEETS

BID SET	CURRENT AS OF: 12/16/2024	
	SCALE: AS NOTED	SHEET 12
	FILE NO.: 111567.00 Y-	OF 22



Midwest Testing Services, Inc.
3705 Progress Blvd.
Peru, IL 61354

BORING LOG

Phone: 815-223-6696
Fax: 815-223-6659
e-mail: mts37@comcast.net

Sheet 1 of 2

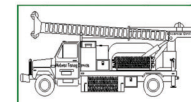
Client: Chamlin & Associates, Inc.
Project Name Section No.: 21-00835-00-BR
Project Site: Kelly St. Br., S. of W. 1st. St. over Prairie Creek
LaSalle Co., Streator, IL

Boring No. B-1
Surface Elev. 599.91
Auger Depth 36.00 Rotary Depth NA
Start Date 07/31/24 Finish Date 07/31/24

Location: North Abutment
N. 1627575.7178 E. 844509.2148

(DEPTH) *ELEV.	DESCRIPTION OF MATERIALS	Graphic Log	Depth in feet	SAMPLES					DRILLED BY	REMARKS
				Sample No.	Sample Type	Qu (TSF)/KSF*	N Value (Blows)	Bulge / Shear		
599.91									Randy Safranski Diedrich D-120	
598.91	Asphalt over Aggregate		1							
597.91	Stiff Brown/Black/Gray Clay (Fill)		2	1	SS	1.4	11	B	13	
596.91			3							
595.91			4							
594.91	Stiff Brown Clay (Fill)		5	2	SS	1.2	8	B	13	
593.91			6							
592.91	Stiff Brown Sand & Gravel mixed with Clay (Fill)		7							
591.91			8	3	SS	1.3	10	S	11	
590.91			9							
589.91			10	4	SS	1.0	8	B	8	
588.91			11							
587.91	Medium Stiff to Stiff Brown Sandy Clay (Fill)		12							
586.91			13	5	SS	---	12	B	9	
585.91			14							
584.91			15	6	SS	---	29	---	13	
583.91			16							
582.91	Hard Gray Weathered Shale		17	7	SS	---	40	---	10	← Approx. bottom of creek
581.91			18							
580.91			19							
579.91	Hard Gray Shale		20	8	SS	5.4*	120*	12"	---	8

Groundwater Data: Static water level after auger removal; Elevation 565.41
Comments: *Modified SPT as per IDOT



Midwest Testing Services, Inc.
3705 Progress Blvd.
Peru, IL 61354

BORING LOG

Phone: 815-223-6696
Fax: 815-223-6659
e-mail: mts37@comcast.net

Sheet 2 of 2

Client: Chamlin & Associates, Inc.
Project Name Section No.: 21-00835-00-BR
Project Site: Kelly St. Br., S. of W. 1st. St. over Prairie Creek
LaSalle Co., Streator, IL

Boring No. B-1
Surface Elev. 599.91
Auger Depth 36.00 Rotary Depth NA
Start Date 07/31/24 Finish Date 07/31/24

Location: North Abutment
N. 1627575.7178 E. 844509.2148

(DEPTH) *ELEV.	DESCRIPTION OF MATERIALS	Graphic Log	Depth in feet	SAMPLES					DRILLED BY	REMARKS
				Sample No.	Sample Type	Qu (TSF)/KSF*	N Value (Blows)	Bulge / Shear		
578.91									Randy Safranski Diedrich D-120	
577.91			22							
576.91			23	9	SS	5.4*	120*	12"	---	8
575.91			24							
574.91			25							
573.91	Hard Dark Gray Shale		26	10	SS	5.4*	120*	12"	---	8
572.91			27							
571.91			28	11	SS	5.4*	120*	12"	---	8
570.91			29							
569.91			30							
568.91			31	12	SS	5.4*	120*	12"	---	8
567.91			32							
566.91			33	13	SS	5.4*	120*	12"	---	8
565.91			34							
564.91	Hard Black Coal		35	14	SS	5.4*	120*	12"	---	12
563.91	← Auger Refusal Boring Terminated		36							
562.91			37							
561.91			38							
560.91			39							
559.91			40							
558.91			41							

Groundwater Data: Static water level after auger removal; Elevation 565.41
Comments: *Modified SPT as per IDOT

CHAMLIN & ASSOCIATES, INC. © 2024
Drawing Name: R:\USERS\11\11567.00 - Streator Kelly Street Bridge Replacement\CAD\PLANS\013--BORINGS 01.dwg
Last Modified: Friday, December 13, 2024 3:38:40 PM
Plotted On: Wednesday, December 18, 2024 4:21:30 PM
by Kurt Decker

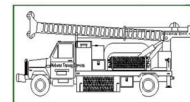
DRAWN BY: KED	REVISIONS			
CHECKED BY: JLS	LEVEL	BY	DATE	DESCRIPTION
DATE: 09/2024				



KELLY STREET BRIDGE REPLACEMENT
SECTION 21-00835-00-BR
LASALLE COUNTY

SOIL BORINGS
S.N. 050-8029
SHEET 4 of 13 SHEETS

BID SET
CURRENT AS OF: **12/16/2024**
SCALE: AS NOTED
FILE NO.: 111567.00 Y-
SHEET **13**
OF **22**



Midwest Testing Services, Inc.
3705 Progress Blvd.
Peru, IL 61354

BORING LOG

Sheet 1 of 2

Phone: 815-223-6696
Fax: 815-223-6659
e-mail: mts37@comcast.net

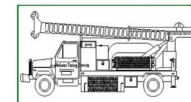
Client: Chamlin & Associates, Inc.
Project Name Section No.: 21-00835-00-BR
Project Site: Kelly St. Br., S. of W. 1st. St. over Prairie Creek
LaSalle Co., Streator, IL

Boring No. B-2
Surface Elev. 596.94
Auger Depth 39.00 Rotary Depth NA
Start Date 07/31/24 Finish Date 07/31/24

Location: North Abutment
N. 1627627.6605 E. 844510.5021

(DEPTH) *ELEV.	DESCRIPTION OF MATERIALS	Graphic Log	Depth in feet	SAMPLES						DRILLED BY	REMARKS
				Sample No.	Sample Type	Qu (TSF)/KSF*	N Value (Blows)	Bulge / Shear	Moisture (%)		
596.94										Randy Safranski Diedrich D-120	
595.94	Asphalt over Aggregate		1								
594.94			2								
593.94	Medium Stiff Brown/Black Clay (Fill)		3	1	SS	1.4	7	B	13		
592.94			4								
591.94			5								
590.94			6	2	SS	1.2	6	B	13		
589.94			7								
588.94	Medium Dense Brown Sand & Gravel (Fill)		8	3	SS	---	10	---	10		
587.94			9								
586.94			10								
585.94			11	4	SS	1.0	8	B	12		
584.94	Medium Stiff to Stiff Gray Clay (Fill)		12								
583.94			13	5	SS	1.0	8	B	12		
582.94			14								
581.94			15								
580.94			16	6	SS	1.1	10	---	13		Approx. bottom of creek
579.94			17								
578.94	Hard Gray Weathered Shale		18	7	SS	---	40	---	10		
577.94			19								
576.94	Hard Gray Shale		20	8	SS	3.15*	69* 12"	---	9		

Groundwater Data: Static water level after auger removal; Elevation 571.94
Comments: *Modified SPT as per IDOT



Midwest Testing Services, Inc.
3705 Progress Blvd.
Peru, IL 61354

BORING LOG

Sheet 2 of 2

Phone: 815-223-6696
Fax: 815-223-6659
e-mail: mts37@comcast.net

Client: Chamlin & Associates, Inc.
Project Name Section No.: 21-00835-00-BR
Project Site: Kelly St. Br., S. of W. 1st. St. over Prairie Creek
LaSalle Co., Streator, IL

Boring No. B-2
Surface Elev. 596.94
Auger Depth 39.00 Rotary Depth NA
Start Date 07/31/24 Finish Date 07/31/24

Location: North Abutment
N. 1627627.6605 E. 844510.5021

(DEPTH) *ELEV.	DESCRIPTION OF MATERIALS	Graphic Log	Depth in feet	SAMPLES						DRILLED BY	REMARKS
				Sample No.	Sample Type	Qu (TSF)/KSF*	N Value (Blows)	Bulge / Shear	Moisture (%)		
575.94											
574.94			22								
573.94			23	9	SS	3.15*	69* 12"	---	9		
572.94			24								
571.94			25								
570.94	Hard Dark Gray Shale		26	10	SS	5.4*	120* 12"	---	8		
569.94			27								
568.94			28	11	SS	5.4*	120* 12"	---	8		
567.94			29								
566.94			30								
565.94			31	12	SS	3.15*	69* 12"	---	9		
564.94			32								
563.94			33	13	SS	---	1	---	---		First Water
562.94	Coal Mine (Void)		34								
561.94			35								
560.94			36	14	SS	---	0	---	---		
559.94	Very Soft to Soft Coal Mine Sediment		37	16	SS	---	2	---	---		
558.94			38	17	SS	---	2	---	---		
557.94	Hard Black Coal		39	18	SS	---	2	---	---		
556.94	Auger Refusal Boring Terminated		40	19	SS	---	3	---	---		
555.94			41	20	SS	---	30	---	---		

Groundwater Data: Static water level after auger removal; Elevation 571.94
Comments: *Modified SPT as per IDOT

CHAMLIN & ASSOCIATES, INC. © 2024
Drawing Name: R:\USERS\11\1151567\00 - Streator Kelly Street Bridge Replacement\CAD\PLANS\014--BORINGS 02.dwg
Last Modified: Friday, December 13, 2024 3:38:20 PM
Plotted On: Wednesday, December 18, 2024 4:21:35 PM
by: Kurt Decker

DRAWN BY: KED	REVISIONS			
CHECKED BY: JLS	LEVEL	BY	DATE	DESCRIPTION
DATE: 09/2024				

PERU MORRIS
OTTAWA MORTON
ILLINOIS

KELLY STREET BRIDGE REPLACEMENT
SECTION 21-00835-00-BR
LASALLE COUNTY

SOIL BORINGS
S.N. 050-8029
SHEET 5 of 13 SHEETS

CONSTRUCTION PLANS FOR PROPOSED KELLY STREET BRIDGE CROSSING OF PRAIRIE CREEK BRUCE TOWNSHIP SEC. 26-31-3 LASALLE CO., ILLINOIS STAGE I CONST.

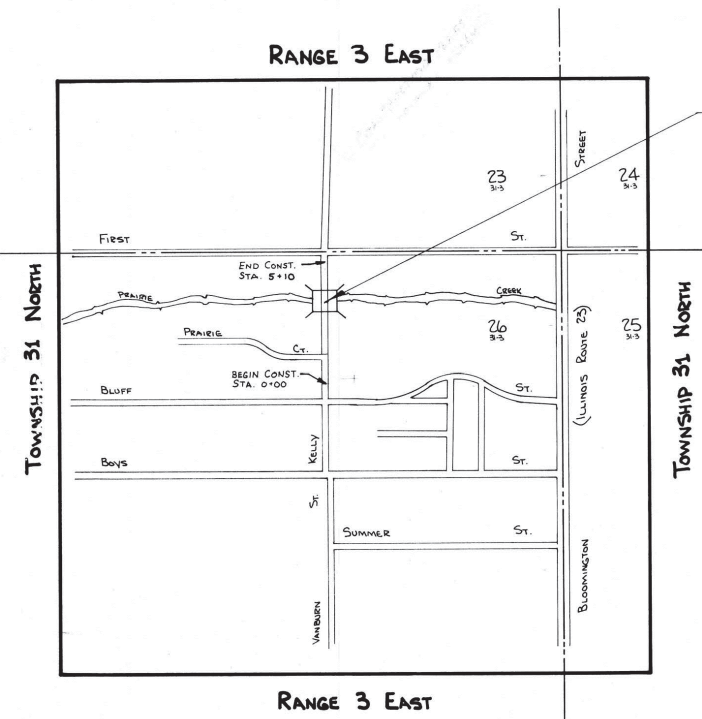
TABLE OF REVISIONS		
DATE	BY	ADDED
2-22-81	M.T.T.	ROADWAY TRANSITION AREAS INCREASED.
3-12-81	M.T.T.	TREE REMOVAL, GUARDRAIL DIMENSIONS & ROADWAY ROAD X-SECTIONS REVISED.
5-11-81	M.T.T.	CENTERLINE GRADE REVISED.
7-13-81	M.T.T.	DURING THE SECOND BID LETTING.

SHEET NO.	DESCRIPTION
1	COVER SHEET - SUMMARY OF QUANTITIES
2	GENERAL PLAN AND ELEVATION
3	SUPERSTRUCTURE DETAILS
4	ABUTMENT AND PILE CAP DETAILS
5	WING WALL PLAN AND ELEVATION DETAIL
6	STEEL RAILING TYPE "S-1"
7	GUARDRAIL AND DETAIL
8	ROAD PLAN AND PROFILE
9 - 10	CHANNEL WORK X-SECTIONS AND DETAILS
11 - 18	ROADWAY X-SECTIONS
14	STANDARDS
15	SOIL BORINGS

STAGE I

SUMMARY OF QUANTITIES

ITEM	QUANTITY
1) REMOVAL OF EXISTING STRUCTURES	1 EACH
2) CHANNEL EXCAVATION	1318 CU. YD.
3) STRUCTURE EXCAVATION	325 CU. YD.
4) TEST PILES	1 EACH
5) FURNISHING CREOSOTED PILES	342 L.F.
6) DRIVING TIMBER PILES	342 L.F.
7) METAL SHOES	20 EACH
8) SETTING PILES IN ROCK	18 EACH
9) CLASS "X" CONCRETE	28 CU. YD.
10) REINFORCEMENT BARS	2110 LBS.
11) TREATED TIMBER	7525 F.B.M.
12) HARDWARE	3285 LBS.
13) BORROW EXCAVATION	1202 CU. YD.
14) PRECAST OR PRECAST/PRESTRESSED CONCRETE BRIDGE SLAB	870 SQ. FT.
15) PROTECTIVE COAT	96 SQ. YD.
16) NAME PLATE	1 EACH
17) STEEL RAILING, TYPE "S-1"	67 L.F.
18) TRAFFIC BARRIER TERMINAL TY-1A	4 EACH
19) STEEL PLATE BM. GUARDRAIL TY-A	143.75 L.F.
20) TRAFFIC BARRIER TERMINAL TY-5A	4 EACH
21) PREPARATION OF BASE	2077 SQ. YD.
22) AGGREGATE BASE COURSE, TY-B	510 TON
23) STONE DUMPED RIP RAP	120 SQ. YD.
24) FURNISHING STEEL PILES, HP 12 X 53	385 L.F.
25) AGGREGATE SHOULDER, TY-B	71 TON



LOCATION OF PROPOSED
KELLY ST. BRIDGE

PREPARED BY
VEGRZYN, SARVER & ASSOCIATES, INC.

ENGINEERS - SURVEYORS
218 W. LAFAYETTE ST. - OTTAWA, ILL. - 434-7225
106 E. WASHINGTON ST. - PONTIAC, ILL. - 844-5135

PLANS PREPARED UNDER THE DIRECTION OF: Carter E. Sarver

CARTER E. SARVER
ILL. REG. PROF. ENGINEER
No. 62-26920

DATED: 10/9/81

STAGE I CONSTRUCTION

Approved By LaSalle County Superintendent of Highways

Eugene E. Stevenson
EUGENE E. STEVENSON

Date: 5/19/82

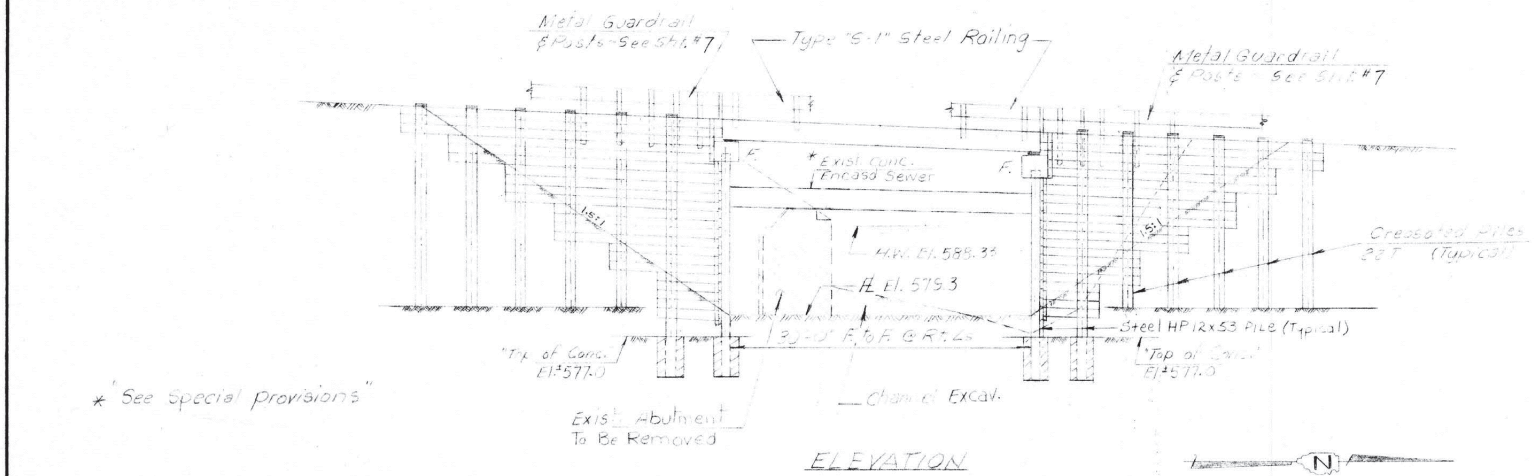
"I certify that this bridge design is structurally adequate and economical for the design loadings shown on the plans. The design complies with requirements of the current 'AASHTO Standard Specifications for Highway Bridges.'"

Abraham H. Beck
Ill. Reg. Structural Engineer
3373

REV. KTS 12282 ADE BY H.B.W.

CHAMLIN & ASSOCIATES, INC. © 2024
Drawing Name: R:\USERS\11111567\00 - Sireator Kelly Street Bridge Replacement\CAD\PLANS\015-EX PLANS.dwg Last Modified: Friday, December 13, 2024 3:40:02 PM Plotted On: Wednesday, December 18, 2024 4:21:40 PM by Kurt Decker

Drawn By AE	Chkd. By CES	Design Eng. CES	App. By AE
Scale: NONE			
Job No. 2276		Dwg. No.	
GENERAL PLAN AND ELEVATION			
Bruce Township - LaSalle County Kelly St. Bridge Over Prairie Creek			
Sheet No. 7 of 15		Date 10/16/81	



Station 2+55
Prairie Creek
Built 195 by
Bruce Township
La Salle County
Loading HS 20
Sta. No. 050-348

NAME PLATE
See Std. 2113

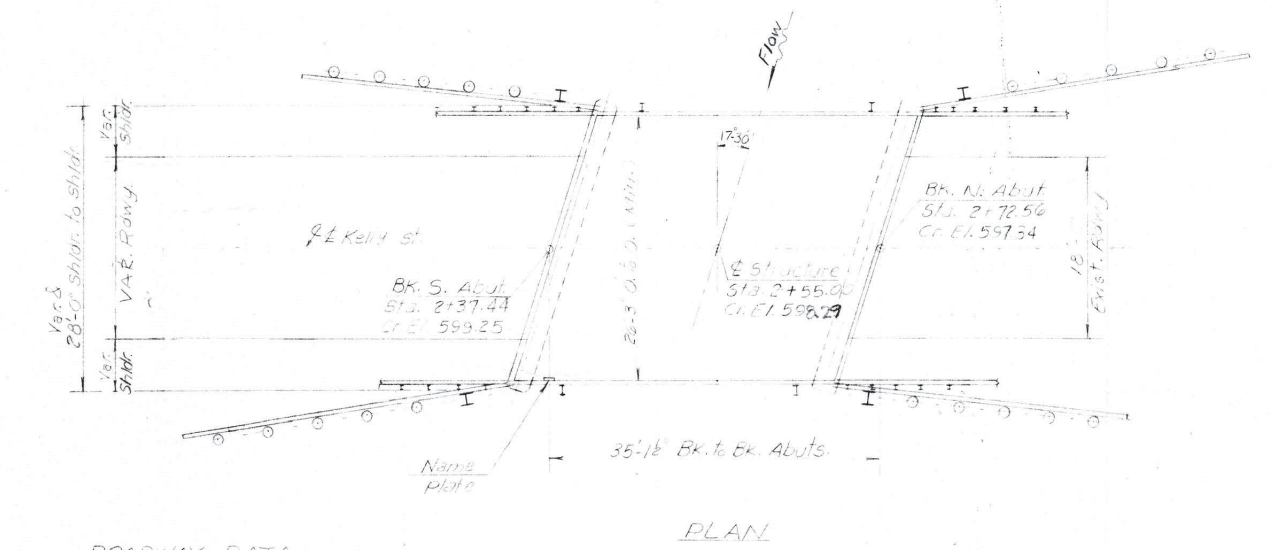
GENERAL NOTES

Reinforcement bars in the substructure shall conform to the requirements of A.A.S.H.T.O. M31 or M53, Grade 60.

The top surface of the beams shall be finished in accordance with Article 505.02 of the Standard Specifications except that the surface shall not be roughened by branning. The finished surface shall be free of depressions or high spots with sharp corners.

The contractor shall drive one test pile in a south abutment wingwall in a permanent location before ordering the remainder of the piles.

It shall be the contractor's responsibility to verify all dimensions and details in the field and make necessary approved adjustments prior to construction or ordering of materials.



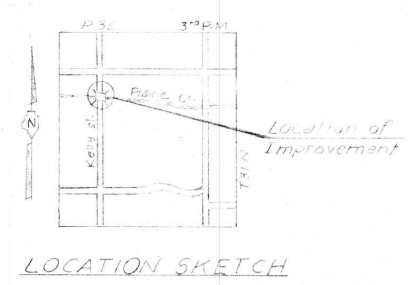
ROADWAY DATA			
ADT	DHV	Class	Design Speed

DESIGN STRESSES

Precast Units	Field Units
$f_c = 4500 \text{ psi}$	$f_c = 1400 \text{ psi}$
$f_s = 1300 \text{ psi}$	$f_s = 24,000 \text{ psi}$
$n = 8$	

Allow 25#s/sq ft for future wearing surface
Design Specifications: 1977 AASHTO, 1978, 1979, 1980 & 1981 Interim Specifications.

Loading HS20-44



Reviewed for
Structural Adequacy
Abraham K. Beck
10-9-1981

**GENERAL PLAN & ELEVATION
PRAIRIE CREEK
BRUCE TOWNSHIP
LA SALLE COUNTY
STA. 2+55**

CHAMLIN & ASSOCIATES, INC. © 2024
Drawing Name: R:\USERS\11111567\00 - Sreator Kelly Street Bridge Replacement\CAD\PLANS\016-EX PLANS.dwg Last Modified: Friday, December 13, 2024 3:40:39 PM Plotted On: Wednesday, December 18, 2024 4:21:45 PM by Kurt Decker

DRAWN BY: KED	REVISIONS			
	LEVEL	BY	DATE	DESCRIPTION
CHECKED BY: JLS				
DATE: 09/2024				



**KELLY STREET BRIDGE REPLACEMENT
SECTION 21-00835-00-BR
LASALLE COUNTY**

**EXISTING PLANS
S.N. 050-8488 (E) 050-8029 (P)**

SHEET 7 of 13 SHEETS

BID SET

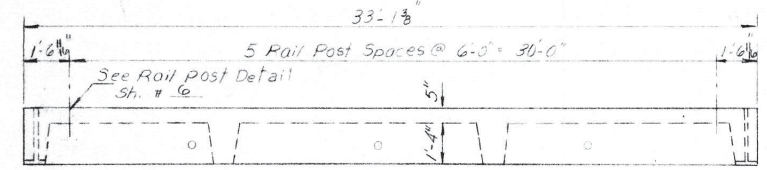
CURRENT AS OF: 12/16/2024

SCALE: AS NOTED SHEET 16

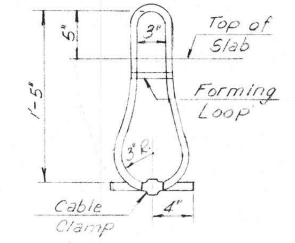
FILE NO.: 111567.00 Y- OF 22

Drawn By AE	Chkd By CS	Desig. Eng. CS	App. By AE
Scale NONE	Job No. 2276	Dwg. No.	
SUPERSTRUCTURE DETAILS			
Vegrzyn, Sarver & Associates Surveyors - Engineers 218 West Lafayette St., Ottawa, Illinois 106 East Washington St., Pontiac, Illinois			
Bruce Township - LaSalle County Kelly St. Bridge Over Prairie Creek			
Sheet No. 3 of 15		DATE 10/10/21	

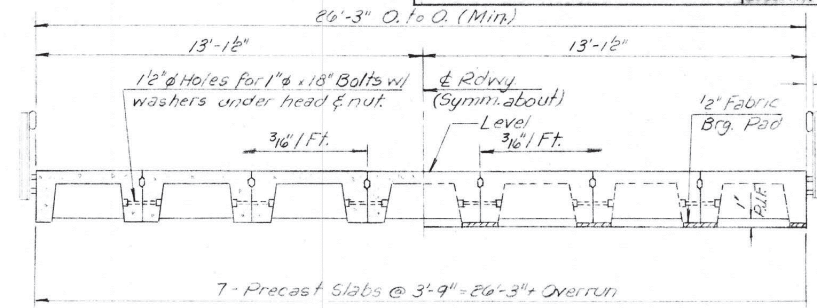
NOTE: AN ALTERNATE PRECAST/PRESTRESSED BRIDGE WILL BE ACCEPTED IF IT IS EQUAL STRUCTURALLY WITH THE PRECAST DECK. IT IS THE CONTRACTORS RESPONSIBILITY TO ADJUST OTHER ITEMS FOR CHANGE IN DECK THICKNESS ETC. NO ADDITIONAL COMPENSATION WILL BE ALLOWED FOR INCREASING OTHER PAY ITEMS.



ELEVATION

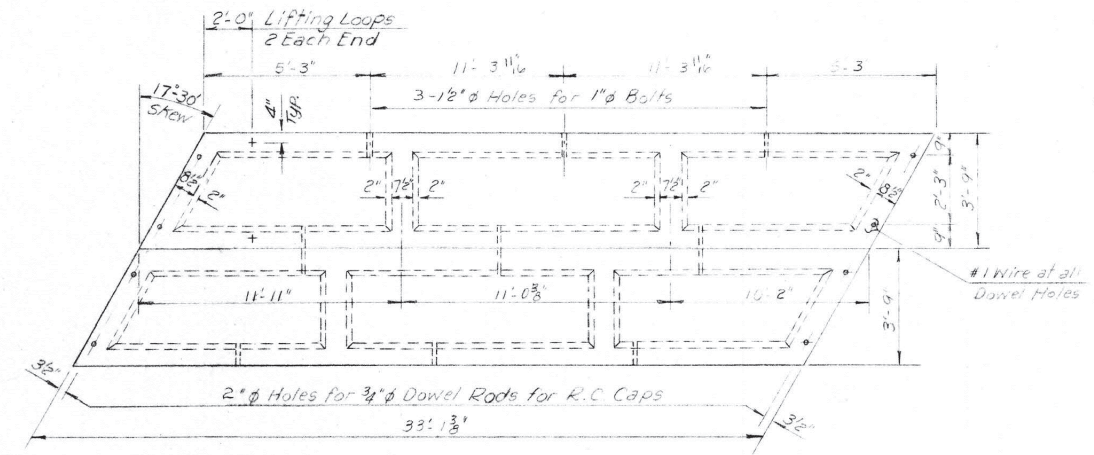


LIFTING LOOP DETAIL

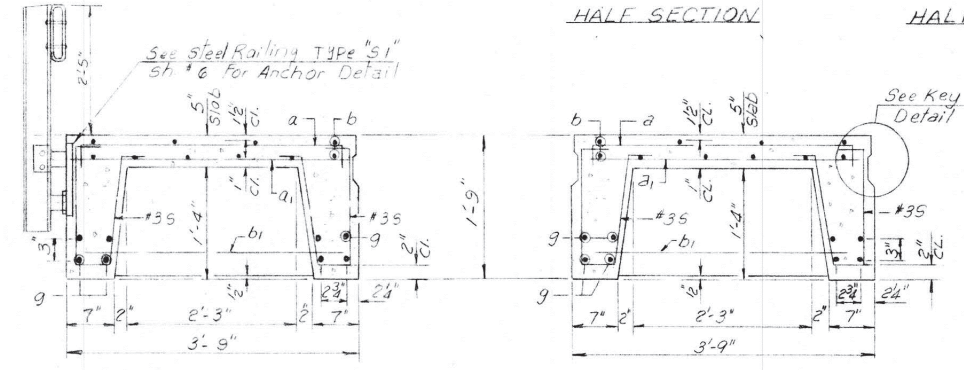


HALF SECTION

HALF END ELEVATION



PLAN



SECTION THRU EXTERIOR UNIT

SECTION THRU INTERIOR UNIT

NOTES

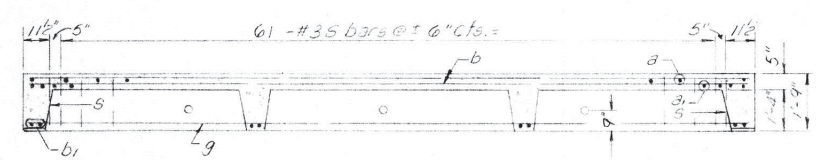
Lifting Loops shall be 2" diameter, 6x19 class wire rope with fibre core and shall have a minimum ultimate tensile strength of 21,000 lbs.

Longitudinal shear keys shall be packed with a very dry mix 2:1 sand pc. mortar.

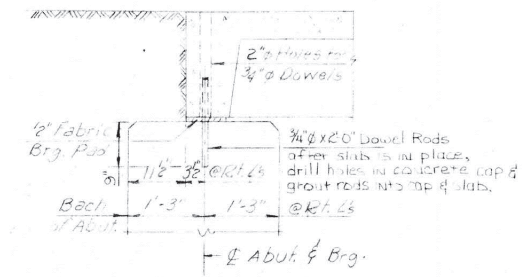
After beams have been erected, holes for the dowel anchors shall be drilled into the sub structure and the anchor dowels shall be grouted in place.

Cost of reinforcement and accessories, cast into the slab, of bearing pads, of furnishing, drilling for, placing and grouting anchor dowels and of grouting longitudinal shear keys is included in unit price bid for "Precast Concrete Bridge Slab."

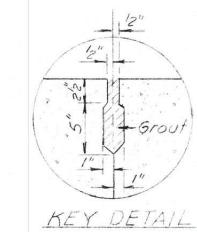
After fabrication the transverse tie assemblies (tie rods nuts and washers) shall be hot dipped galvanized in accordance with A.S.T.M. Designation: A153.



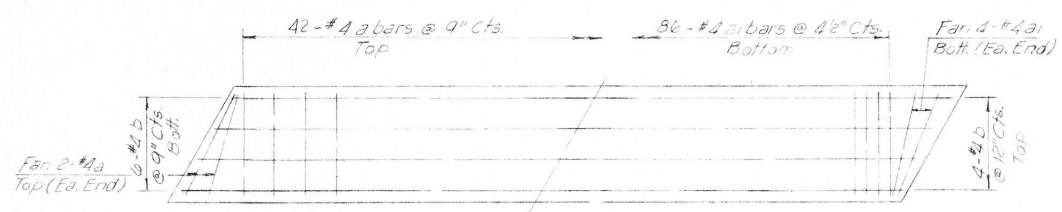
SECTION ALONG C OF BEAM



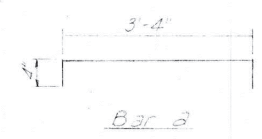
SEC. THRU ABUT.



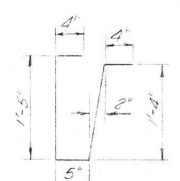
KEY DETAIL



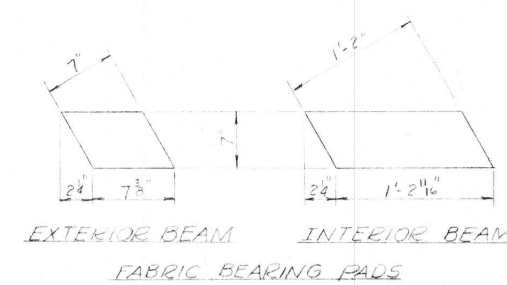
PLAN SHOWING SLAB REINFORCEMENT



Bar 3



Bar 5



EXTERIOR BEAM INTERIOR BEAM
FABRIC BEARING PADS

**** BAR LIST - ONE UNIT**
Reinforcement to be cast into slab

Bar	No.	Size	Length	Shape
a	46	#4	4'-3"	□
a1	94	#4	3'-3"	—
b	10	#4	32'-10"	—
b1	8	#4	3'-6"	—
g	8	#11	32'-10"	—
6	63	#3	3'-10"	⊂

** For Manufacturers References Only.

BILL OF MATERIAL

Item	Unit	Total
Precast Concrete Bridge Slab	Sq. Ft.	870
Steel Railing, Type S-1	Lin. Ft.	66.3

SUPERSTRUCTURE

CHAMLIN & ASSOCIATES, INC. © 2024
DRAWING NAME: R:\USERS\11111567\00 - Sreator Kelly Street Bridge Replacement\CAD\PLANS\017-EX PLANS.dwg
Last Modified: Friday, December 13, 2024 3:41:15 PM
Plotted On: Wednesday, December 18, 2024 4:21:50 PM
by Kurt Decker

REVISIONS	LEVEL	BY	DATE	DESCRIPTION

CA
Chamlin & Associates

PERU MORRIS
OTTAWA MORTON
ILLINOIS

KELLY STREET BRIDGE REPLACEMENT
SECTION 21-00835-00-BR
LASALLE COUNTY

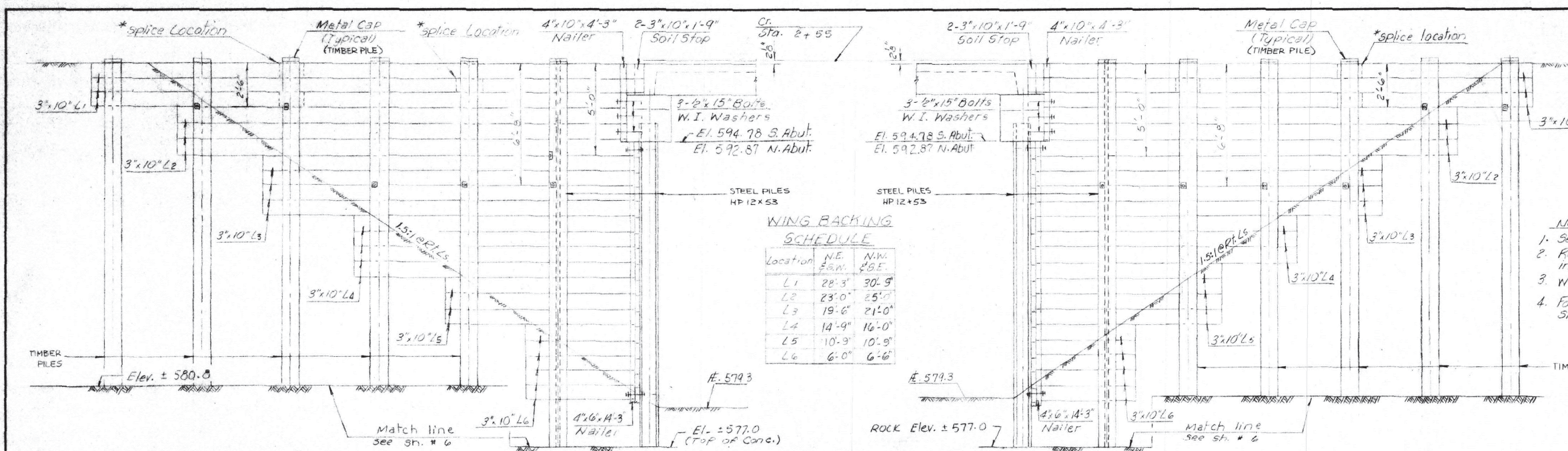
EXISTING PLANS
S.N. 050-8488 (E) 050-8029 (P)
SHEET 8 of 13 SHEETS

BID SET

CURRENT AS OF: 12/16/2024

SCALE: AS NOTED

FILE NO.: 111567.00 Y- OF 22



WING BACKING SCHEDULE

Location	N.E. E.A.M.	N.W. E.S.E.
L1	28'-3"	30'-9"
L2	23'-0"	25'-0"
L3	19'-6"	21'-0"
L4	14'-9"	16'-0"
L5	10'-9"	10'-9"
L6	6'-0"	6'-6"

Drawn By: **AE** Checked By: **AE** Design Eng: **CS** App. By: **AE**

Scale: **NONE** Job No.: **2176** Date: **10/10/81**

WING WALL PLAN AND ELEVATION
Bruce Township - LaSalle County
Kelly St. Bridge Over Prairie Creek

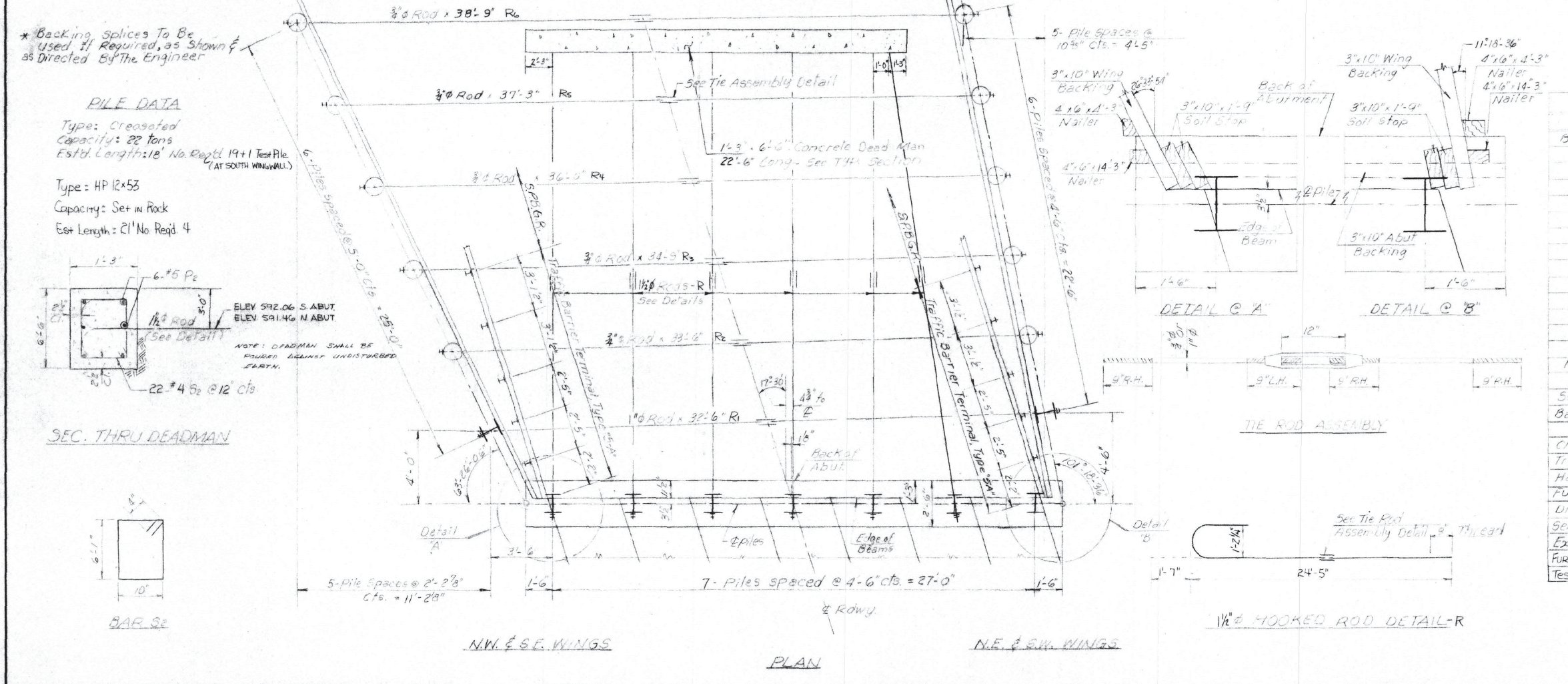
Sheet No. **5** of **15** Date **10/10/81**

1-12-81 (15) ADJUSTMENT CANNONS I.P.W.

Rev. Date By Description App. By

Vagyzyn, Sarver & Associates
Surveyors - Engineers
218 West LaFayette St., Ottawa, IL
106 East Washington St., Pontiac, IL

- NOTES:**
1. See General Notes Sh. # 1
 2. Reint. Quantities are included in Abut. Bill of Material
 3. Work this sheet with Shs. # 4 & 7
 4. For Backing splice detail see Sh. # 4

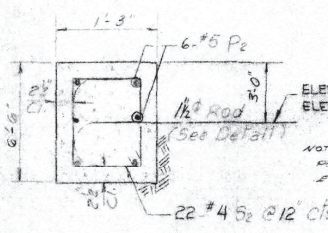


* Backing splices to be used if required, as shown & as directed by the Engineer

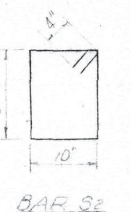
PILE DATA

Type: **Crested**
Capacity: **22 tons**
Est'd. Length: **18' No. Reqd 19+1 Test Pile (AT SOUTH WING WALL)**

Type: **HP 12x53**
Capacity: **Set in Rock**
Est Length: **21' No. Reqd 4**



SEC. THRU DEADMAN



BILL OF MATERIAL

TREATED LUMBER		
Item	No.	Size Length
Backing	6	3"x10' 30'-9"
"	6	" " 28'-3"
"	8	" " 25'-0"
"	8	" " 23'-0"
"	8	" " 21'-0"
"	9	" " 19'-6"
"	8	" " 16'-0"
"	6	" " 14'-9"
"	15	" " 10'-9"
"	10	" " 6'-6"
"	10	" " 6'-0"
Nails	4	4"x6' 14'-9"
"	4	2"x10' 4'-3"
Soil Stop	8	3"x10' 1'-9"
Backing Splices	13	3"x10' 1'-6"
Class 'X' Concrete	Cu Yd	135
Treated Timber	F.B.M.	4134
Hardware	Lbs	3285
Pur. Creo. Pile	Lin Ft	342
Driv. Timber Pile	Lin Ft	342
Setting Piles in Rock	Ea.	4
Excavation for Struct.	Cu Yd	51
Pur. Stl. Piles HP 12x53	Lin Ft	93
Test Pile - Timber	Each	1

CHAMLIN & ASSOCIATES, INC. © 2024
Drawing Name: R:\USERS\1111567\00 - Sreator Kelly Street Bridge Replacement\CAD\PLANS\019-EX PLANS.dwg Last Modified: Wednesday, December 4, 2024 2:45:38 PM Plotted On: Wednesday, December 18, 2024 4:22:00 PM by Kurt Decker

DRAWN BY: KED	LEVEL	BY	DATE	REVISIONS	DESCRIPTION
CHECKED BY: JLS					
DATE: 09/2024					

CA
Chamlin & Associates

PERU MORRIS
OTTAWA MORTON
ILLINOIS

KELLY STREET BRIDGE REPLACEMENT
SECTION 21-00835-00-BR
LASALLE COUNTY

EXISTING PLANS
S.N. 050-8488 (E) 050-8029 (P)

SHEET 10 of 13 SHEETS

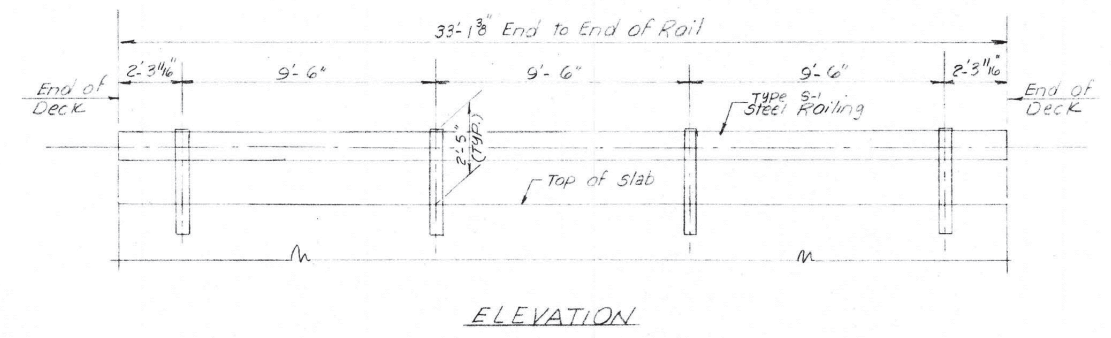
BID SET

CURRENT AS OF: **12/16/2024**

SCALE: AS NOTED SHEET **19**

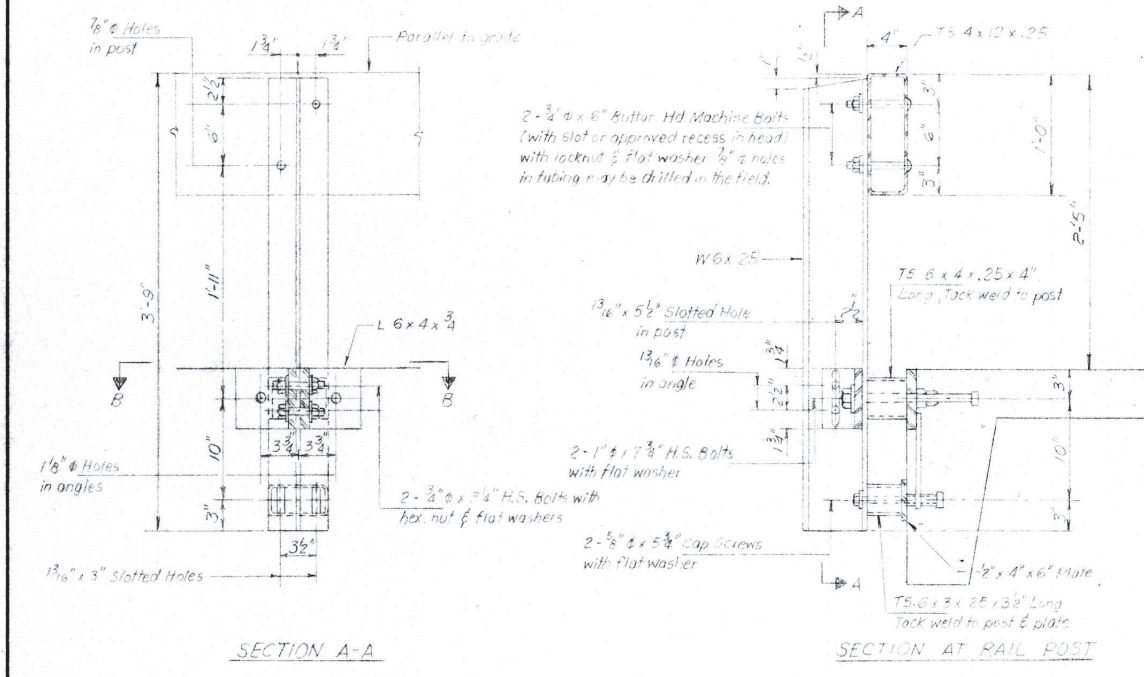
FILE NO.: 111567.00 Y- OF **22**

Drawn By	Chk'd By	Desig. Eng.	App. By
AE	CE	CE	AE
Scale:	NONE	2:176	
Job No.	21-00835-00-BR		
Rev. Date	Description	App. By	App. Date
	STEEL RAILING TYPE "S-1"		
Vegrzyn, Sarver & Associates Surveyors - Engineers 218 West Lafayette St., Ottawa, Illinois 106 East Washington St., Pontiac, Illinois			
Bruce Township - LaSalle County Kelly St. Bridge Over Prairie Creek			Date
Sheet No. 6 of 15			10/10/81



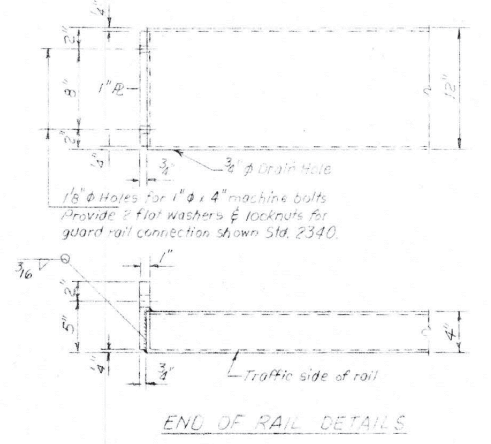
ELEVATION

Hollow structural steel tubing shall conform to the requirements of A.S.T.M. designation A-500 Grade B Structural Steel Tubing.
 All other steel shapes and plates shall conform to the requirements of A.A.S.H.T.O. M-189 except posts and angles shall conform to A.A.S.H.T.O. M-228, Grade 50.
 Bolts, cap screws and nuts shall conform to the requirements of A.S.T.M. designation A-307 except for high strength bolts, nuts and washers noted which shall conform to A.A.S.H.T.O. M-164.
 All bolts, nuts, cap screws, washers and lock washers shall be galvanized in accordance with A.A.S.H.T.O. M-252.
 All post, railing, rail splices, anchor devices and angles shall be galvanized after shop fabrication in accordance with A.A.S.H.T.O. M-111 and A.S.T.M. A-395, galvanized rail shall not be painted.
 All field drilled holes shall be coated with an approved zinc rich paint before erection.
 The 3" x 4" x 8" plates that come in contact with concrete shall receive two coats of asphalt paint conforming to Section 714.09 Type B or plastic fabric bearing pads between the plates and concrete.
 The 3/4" high strength bolts used to connect the 8" x 4" x 3/4" angles to the post shall be tightened in accordance with Article 507.04(3) of the Standard Specifications. The 1" diameter bolts connecting the angles to the concrete shall be tightened to a snug fit and given an additional 8 turn. The 5/8" cap screws in bottom of posts shall be tightened to a snug fit only.

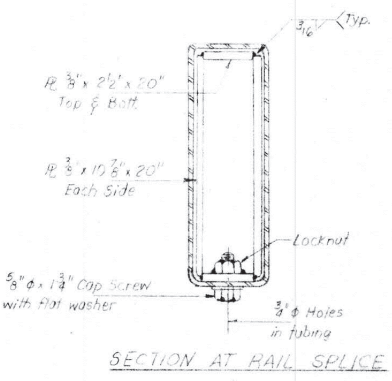


SECTION A-A

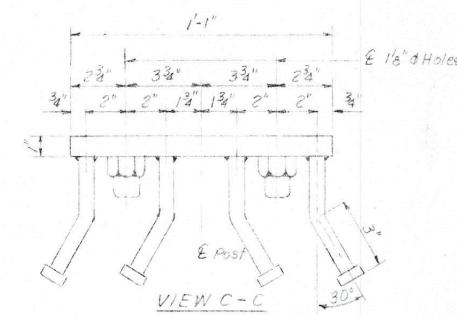
SECTION AT RAIL POST



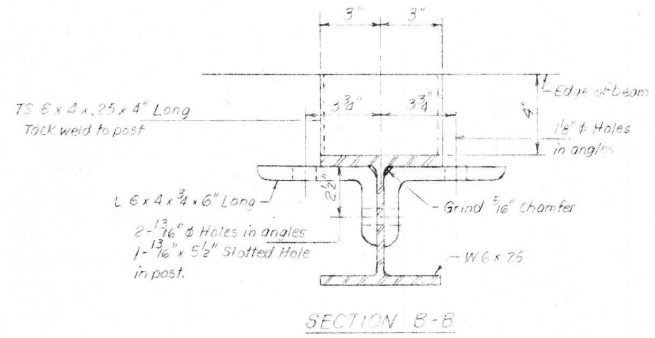
END OF RAIL DETAILS



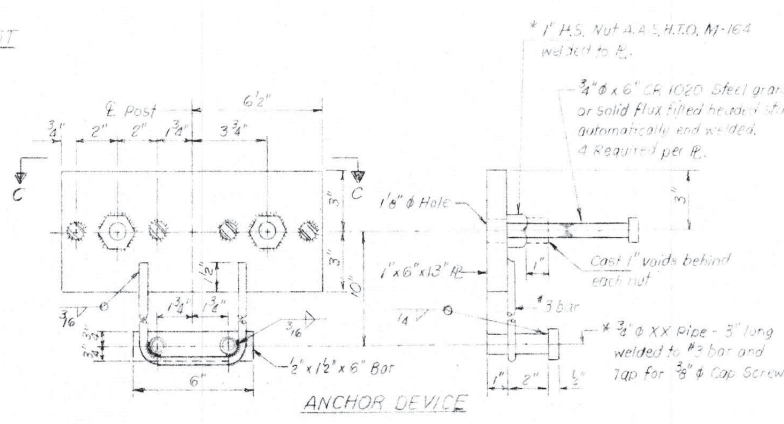
SECTION AT RAIL SPLICE



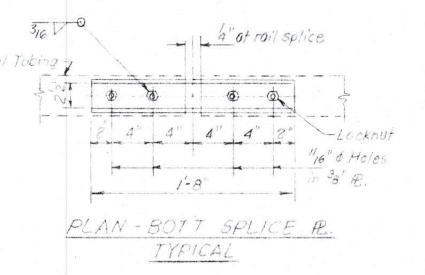
VIEW C-C



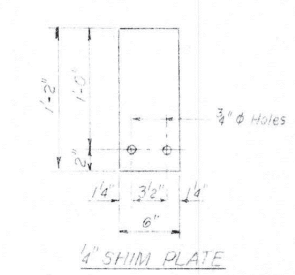
SECTION B-B



ANCHOR DEVICE



PLAN - BOLT SPLICE R. TYPICAL



SHIM PLATE

STEEL RAILING TYPE "S-1"

CHAMLIN & ASSOCIATES, INC. © 2024
 Drawing Name: R:\USERS\1111567\00 - Sreator Kelly Street Bridge Replacement\CAD\PLANS\020-EX PLANS.dwg
 Last Modified: Wednesday, December 4, 2024 2:45:34 PM
 Plotted On: Wednesday, December 18, 2024 4:22:06 PM
 by Kurt Decker

DRAWN BY: KED	REVISIONS			
CHECKED BY: JLS	LEVEL	BY	DATE	DESCRIPTION
DATE: 09/2024				

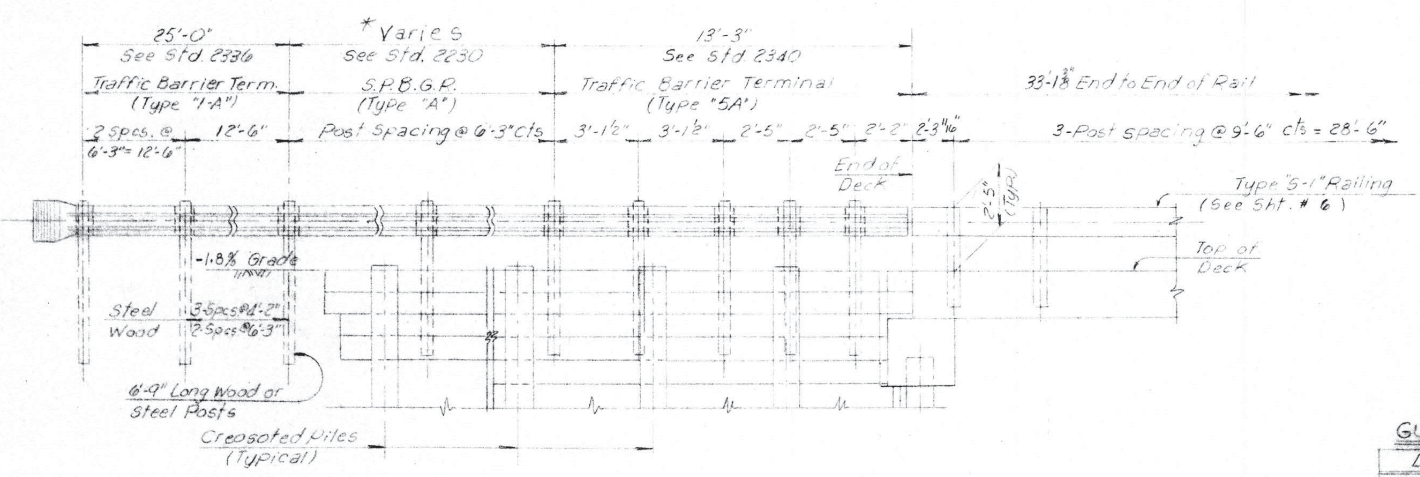
PERU MORRIS
OTTAWA MORTON
ILLINOIS

KELLY STREET BRIDGE REPLACEMENT
SECTION 21-00835-00-BR
LASALLE COUNTY

EXISTING PLANS
S.N. 050-8488 (E) 050-8029 (P)
 SHEET 11 of 13 SHEETS

BID SET
 CURRENT AS OF: 12/16/2024
 SCALE: AS NOTED
 FILE NO.: 111567.00 Y-
 SHEET 20 OF 22

Drawn By	Chkd. By	Desig. Eng.	App. By
AE		CES	AE
Scale:	NONE	Job No.	Dwg. No.
		7776	
Rev. Date	Description	App. By	
Vegnon, Sarver & Associates Surveyors - Engineers 218 West LaFayette St., Ottawa, IL 106 East Washington St., Ottawa, IL			
GUARDRAIL AND DETAIL			
Bruce Township - LaSalle County Kelly St. Bridge Over Prairie Creek			
Sheet No. 7 of 15 10/10/81			



ELEVATION

Showing Outside Face of Railing
(Typical All Four Corners)

* See Guardrail Schedule

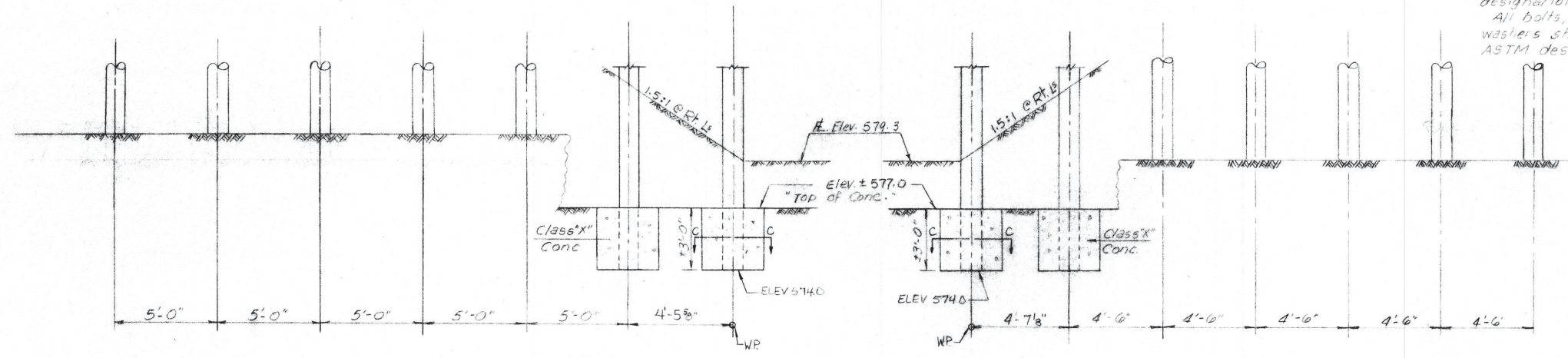
GUARDRAIL SCHEDULE

LOCATION	Length Req'd
N.W. Corner	75'-0"
N.E. Corner	31'-3"
S.W. Corner	12'-0"
S.E. Corner	25'-0"

GENERAL NOTES

All rods through piles shall be threaded 9 in. each end. Each rod shall be provided with 2-4" x 4" x 3/8" plate washers.
 All lumber shall be creosoted.
 Plank backing shall be fastened to each timber pile, & to each 4"x6" nailer strip with 3-60d spikes.
 The item "Hardware" includes all rods, bolts, nuts, washers, spikes, etc. for timber connections.
 All hardware except malleable iron washers shall be hot dipped galvanized steel and shall be galvanized after fabrication.
 The Contractor shall cut off at his own expense all rods and bolts projecting more than one inch beyond nuts.
 Quantities of lumber and hardware are based on sizes and lengths shown. No additional compensation will be allowed for splices or for waste.
 The tops of all wing piles shall be treated as provided in Article 513.13 of the Standard Specifications.
 Plank Backing shall be fastened to each HP 12x53 using 1 Plank clip per pile.
 All steel shapes and plates shall conform to the requirements of ASTM designation A-441 or A-36.
 Bolting materials, bolts, cap screws, and nuts shall conform to the requirements of ASTM designation A-307.
 All bolts, nuts, cap screws, washers, and lock washers shall be galvanized in accordance with ASTM designation A-153.

All timber piles shall be driven to the required capacity and steel HP 12x53 piles shall be set in rock as shown.

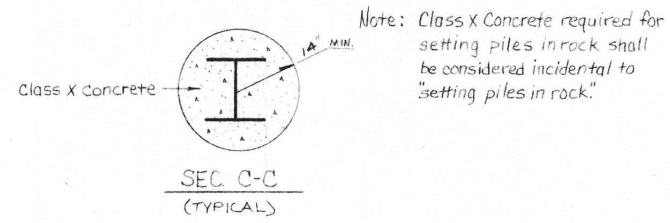


WING ELEVATION

N.W. & S.E.
@ Rt. Ls to Wing

WING ELEVATION

N.E. & S.W.
@ Rt. Ls to Wing



WORK This Sht. with Sht. # 5

GUARDRAIL & DETAIL

CHAMLIN & ASSOCIATES, INC. © 2024
 Drawing Name: R:\USERS\11111567\00 - Sreator Kelly Street Bridge Replacement\CAD\PLANS\021-EX PLANS.dwg Last Modified: Friday, December 13, 2024 3:45:13 PM Plotted On: Wednesday, December 18, 2024 4:22:10 PM by Kurt Decker

DRAWN BY: KED	LEVEL	BY	DATE	REVISIONS	DESCRIPTION
CHECKED BY: JLS					
DATE: 09/2024					

PERU MORRIS
OTTAWA MORTON
ILLINOIS

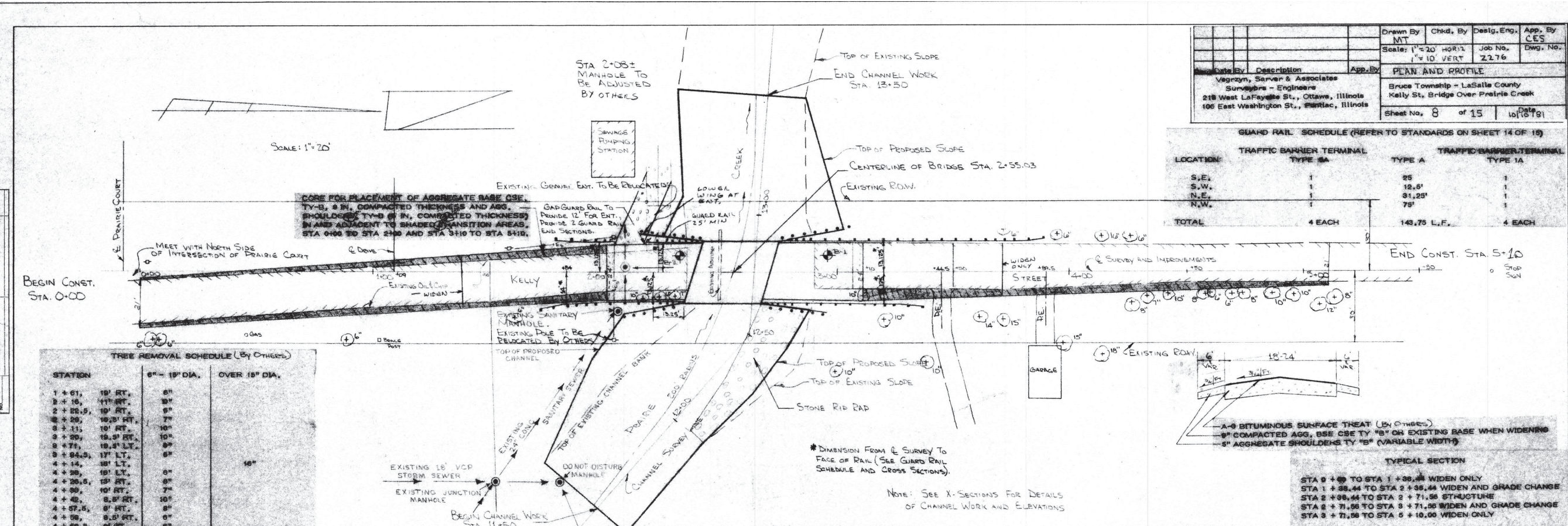
KELLY STREET BRIDGE REPLACEMENT
SECTION 21-00835-00-BR
LASALLE COUNTY

EXISTING PLANS
S.N. 050-8488 (E) 050-8029 (P)
 SHEET 12 OF 13 SHEETS

BID SET
 CURRENT AS OF: 12/16/2024
 SCALE: AS NOTED
 FILE NO.: 111567.00 Y- OF 22

Drawn By	Chkd. By	Desig. Eng.	App. By
MT			CES
Scale: 1"=20' HORZ	Job No.	2276	
1"=10' VERT	PLAN AND PROFILE		
Vegzyn, Sarver & Associates Surveyors - Engineers 218 West LaFayette St., Ottawa, Illinois 105 East Washington St., Peoria, Illinois			
Bruce Township - LaSalle County Kelly St., Bridge Over Prairie Creek			
Sheet No. 8 of 15			Date 10/15/24

GUARD RAIL SCHEDULE (REFER TO STANDARDS ON SHEET 14 OF 15)			
LOCATION	TRAFFIC BARRIER TERMINAL TYPE 1A	TYPE A	TRAFFIC BARRIER TERMINAL TYPE 1A
S.E.	1	25'	1
S.W.	1	12.6'	1
N.E.	1	31.25'	1
N.W.	1	79'	1
TOTAL	4 EACH	148.75 L.F.	4 EACH



TREE REMOVAL SCHEDULE (By Others)			
STATION	8" - 18" DIA.	OVER 18" DIA.	
1 + 61.	18" RT.	8"	
2 + 10.	11" RT.	8"	
2 + 22.5.	10" RT.	8"	
3 + 28.	10.25" RT.	7"	
3 + 33.	18" RT.	10"	
3 + 39.	18.5" RT.	10"	
3 + 44.	18" RT.	8"	
3 + 44.5.	17" LT.	8"	
4 + 14.	18" LT.	8"	16"
4 + 28.	18" LT.	8"	
4 + 28.5.	18" RT.	8"	
4 + 33.	10" RT.	7"	
4 + 42.	8" RT.	10"	
4 + 47.5.	8" RT.	8"	
4 + 58.	8.5" RT.	8"	
4 + 58.5.	8" RT.	8"	
4 + 59.5.	8" RT.	8"	
TOTAL	100 IN. DIA.	16 IN. DIA.	

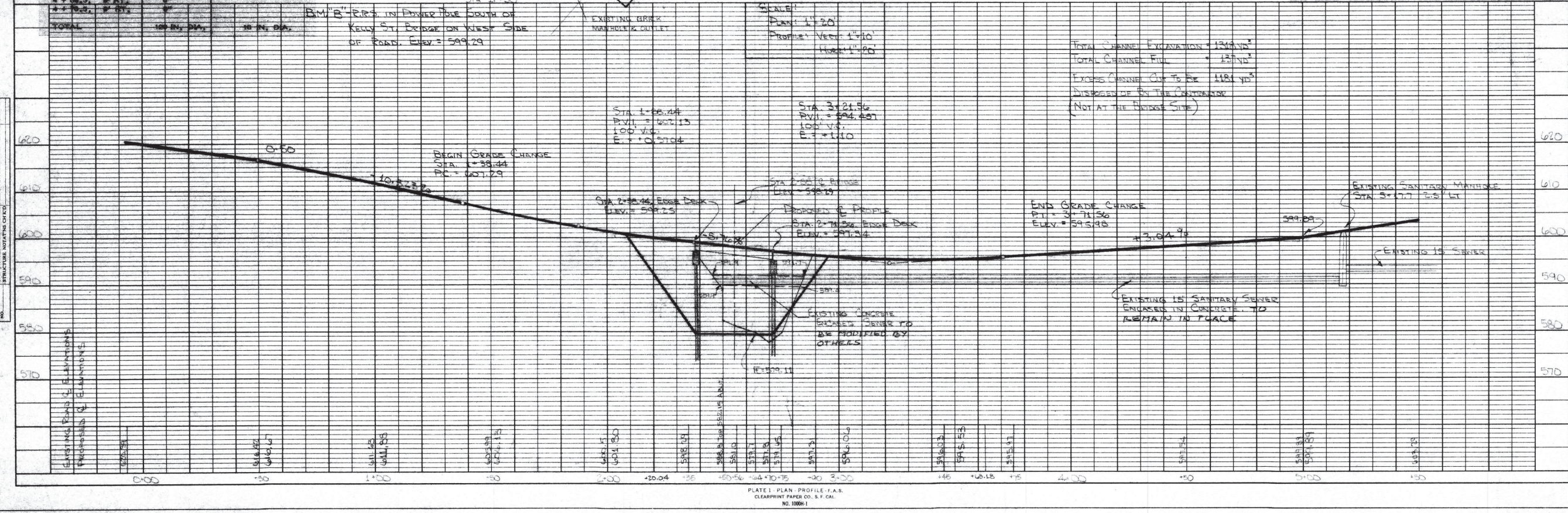


PLATE 1 - PLAN - PROFILE - I.A.S.
CLEARPRINT PAPER CO. S.F. CAL.
NO. 1008H1

CHAMLIN & ASSOCIATES, INC. © 2024
 Drawing Name: R:\USERS\1111567\00 - Sreator Kelly Street Bridge Replacement\CAD\PLANS\02-EX PLANS.dwg - Last Modified: Friday, December 13, 2024, 4:03:11 PM. Plotted On: Wednesday, December 18, 2024, 4:22:15 PM. by Kurt Decker

DRAWN BY: KED	REVISIONS
CHECKED BY: JLS	LEVEL
DATE: 09/2024	BY
	DATE
	DESCRIPTION

PERU MORRIS
OTTAWA MORTON
ILLINOIS

KELLY STREET BRIDGE REPLACEMENT
SECTION 21-00835-00-BR
LASALLE COUNTY

EXISTING PLANS
S.N. 050-8488 (E) 050-8029 (P)
SHEET 13 of 13 SHEETS

BID SET
CURRENT AS OF: 12/16/2024
SCALE: AS NOTED
FILE NO.: 111567.00 Y-
SHEET 22 OF 22