

F.A. RTE.	SECTION	COUNTY	TOTAL SHEETS	SHEET NO.
VAR	2023-SWP-006 (AM)	ILLINOIS	10	1
			CONTRACT NO. 62W55	
* COOK, DUPAGE, LAKE, WILL				

D-91-149-24



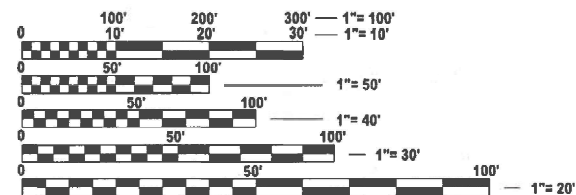
FOR INDEX OF SHEETS, SEE SHEET NO. 2

PROPOSED HIGHWAY PLANS

**ROUTE VARIOUS DISTRICT ONE
SECTION 2023-SWP-006 (AM)
VARIOUS EXPRESSWAY ROUTES (DAYTIME SWEEPING)
I-55, I-57, I-80, I-90, I-94
COUNTY: VARIOUS (COOK, DUPAGE, LAKE, WILL)**

C-91-172-24

LOCATION MAPS - SEE INDEX OF SHEETS



FULL SIZE PLANS HAVE BEEN PREPARED USING STANDARD ENGINEERING SCALES. REDUCED SIZED PLANS WILL NOT CONFORM TO STANDARD SCALES. IN MAKING MEASUREMENTS ON REDUCED PLANS, THE ABOVE SCALES MAY BE USED.

J.U.L.I.E.
JOINT UTILITY LOCATION INFORMATION FOR EXCAVATION
1-800-892-0123
OR 811

PROJECT ENGINEER: OSCAR OLIVEROS (847) 705-4548
PROJECT MANAGER: JACEK EJMONT (847) 705-4641

CONTRACT NO. 62W55

STATE OF ILLINOIS
DEPARTMENT OF TRANSPORTATION

SUBMITTED Oct 21 20 24
[Signature] IR
REGIONAL ENGINEER

December 6, 2024
[Signature]
ENGINEER OF DESIGN AND ENVIRONMENT

December 6, 2024
[Signature]
DIRECTOR OF HIGHWAYS PROJECT IMPLEMENTATION

PRINTED BY THE AUTHORITY OF THE STATE OF ILLINOIS

INDEX OF SHEETS

SHEET NO.	DESCRIPTION
1	TITLE SHEET
2	INDEX OF SHEETS AND STATE STANDARDS
3	SUMMARY OF QUANTITIES AND GENERAL NOTES
4	TYPICAL EXPRESSWAY CROSS SECTIONS
5	TYPICAL ROADWAY CLEANING DETAILS
6	EXPRESSWAY CLEANING LOCATION MAP I-290 EXTENSION / IL ROUTE 53, I-90, I-94
7	EXPRESSWAY CLEANING LOCATION MAP I-290, I-55, I-90, I-94
8	EXPRESSWAY CLEANING LOCATION MAP BISHOP FORD, KINGERY, I-55, I-57, I-80, I-94, IL. ROUTE 394
9	SINGLE LANE WEAVE AND MULTI LANE WEAVE (TC-09)
10	TRAFFIC CONTROL DETAILS FOR FREEWAY SHOULDER CLOSURES AND PARTIAL RAMP CLOSURES (TC-17)

STATE STANDARDS

STANDARD NO.	DESCRIPTION
701400-12	APPROACH TO LANE CLOSURE, FREEWAY/EXPRESSWAY
701401-13	LANE CLOSURE, FREEWAY/EXPRESSWAY
701411-09	LANE CLOSURE, MULTILANE, AT ENTRANCE OR EXIT RAMP, FOR SPEEDS \geq 45 MPH
701426-09	LANE CLOSURE, MULTILANE, INTERMITTENT OR MOVING OPER., FOR SPEEDS > 45 MPH
701428-01	TRAFFIC CONTROL SETUP AND REMOVAL FREEWAY/EXPRESSWAY
701901-10	TRAFFIC CONTROL DEVICES

MODEL: GenNote01 [Sheet]
 FILE NAME: c:\p\work\pwr\illinois.gov_jacek.ejmont@illinois.gov\1051693\ID11492\4-shk-gennote.dgn

	USER NAME = jacek.ejmont	DESIGNED -	REVISED -	STATE OF ILLINOIS DEPARTMENT OF TRANSPORTATION	INDEX OF SHEETS AND STATE STANDARDS			F.A. RTE.	SECTION	COUNTY	TOTAL SHEETS	SHEET NO.			
		DRAWN -	REVISED -		SCALE: NONE	SHEET 1	OF 2	SHEETS	STA.	TO STA.	VAR	2023-SWP-006 (AM)	*	10	2
		CHECKED -	REVISED -											CONTRACT NO. 62W55	
	PLOT DATE = 10/20/2024	DATE -	REVISED -												

* COOK, DUPAGE, LAKE, WILL

SUMMARY OF QUANTITIES

CODE NO.	ITEM	UNIT	URBAN	100 % STATE 0044
			TOTAL QUANTITIES	EXPRESSWAY
Z0010617	SUPPLEMENTAL SWEEPING	MILE	200	200
X0329915	FULL EXPRESSWAY CLEANING CYCLE	EACH	4	4

NOTES:

1. THE CONTRACTOR IS EXPECTED TO COMPLETE THREE CYCLES PER CALENDAR YEAR. THE SCHEDULE MAY VARY AS DIRECTED BY THE ENGINEER.
2. EXPRESSWAY CLEANING CYCLE SCHEDULE WILL BE COORDINATED DURING THE PRE-CONSTRUCTION MEETING. THE CONTRACTOR SHALL NOT START CLEANING CYCLES BEFORE THE DATES SCHEDULED WITHOUT WRITTEN AUTHORIZATION FROM THE ENGINEER.
3. NO DAILY CONTRACTOR WORK REQUESTS / SCHEDULING SHALL BE AUTHORIZED OR APPROVED TO START WHEN IT IS DETERMINED BY THE ENGINEER THAT WEATHER CONDITIONS WILL BE UNFAVORABLE. APPROVAL OF ALL DAILY CONTRACTOR WORK SCHEDULE REQUEST SHALL BE SOLELY DETERMINED BY THE ENGINEER.
4. ALL LANE AND SHOULDER CLOSURES SHALL BE IMMEDIATELY REMOVED DURING ALL ADVERSE WEATHER CONDITIONS WITHOUT EXCEPTION, INCLUDING BUT NOT LIMITED TO RAIN, WET ROAD SURFACE (SPRAY FROM TIRES), MIST, DRIZZLE, SLEET, SNOW, FOG AND ANY OTHER CIRCUMSTANCE DETERMINED UNSAFE BY THE ENGINEER. THE CONTRACTOR SHALL IMPLEMENT THIS CONTRACT REQUIREMENT IMMEDIATELY WITHOUT WAITING FOR DEPARTMENT INSTRUCTIONS.
5. SWEEPING WILL NOT BE ALLOWED WHEN TEMPERATURES OR WIND CHILL FACTORS ARE FORECASTED BY THE DEPARTMENTS CERTIFIED CONSULTING METEOROLOGISTS TO BE AT OR DROP BELOW FREEZING. TEMPERATURE MUST BE ABOVE THIRTY-TWO (32) DEGREES FAHRENHEIT. ALL SHOULDER AND CURB LINES MUST BE FREE OF ANY EXISTING SNOW AND/OR ICE. DRY SWEEPING SHALL BE ALLOWED ONLY IF IT IS CONSIDERED AN EMERGENCY, IMMEDIATE HAZARD, OR ANY WORK AS DESIGNATED BY THE DEPARTMENT THAT REQUIRES FIRST PRIORITY CORRECTIVE ACTION.
6. NO WORK WILL BE ALLOWED DAY OR NIGHT ON THE FOLLOWING DATES UNLESS IT IS CONSIDERED AN EMERGENCY, IMMEDIATE HAZARD OR ANY WORK AS DESIGNATED BY THE DEPARTMENT THAT REQUIRES FIRST PRIORITY CORRECTIVE ACTION:

2025

APRIL 18 - 21	EASTER HOLIDAY
MAY 23 - 27	MEMORIAL DAY HOLIDAY
JULY 3 - 7	INDEPENDENCE DAY HOLIDAY
NOVEMBER 26 - DECEMBER 1	THANKSGIVING HOLIDAY
DECEMBER 22 - JANUARY 1, 2026	CHRISTMAS / NEW YEAR'S HOLIDAY

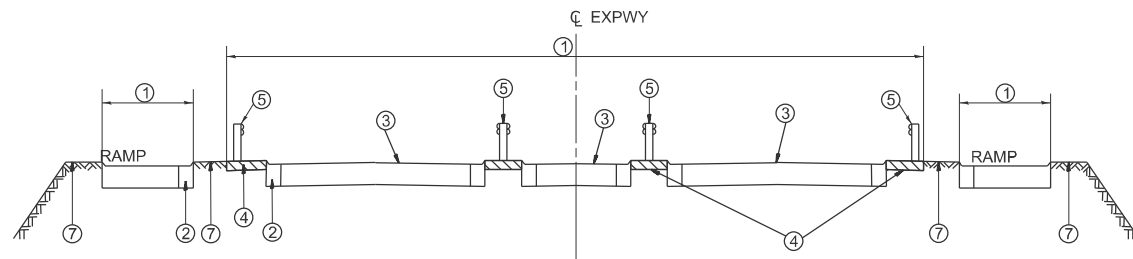
2026

APRIL 3 - 6	EASTER HOLIDAY
MAY 23 - 27	MEMORIAL DAY HOLIDAY
JULY 3 - 7	INDEPENDENCE DAY HOLIDAY
NOVEMBER 25 - DECEMBER 1	THANKSGIVING HOLIDAY
DECEMBER 21 - JANUARY 1, 2027	CHRISTMAS / NEW YEAR'S HOLIDAY

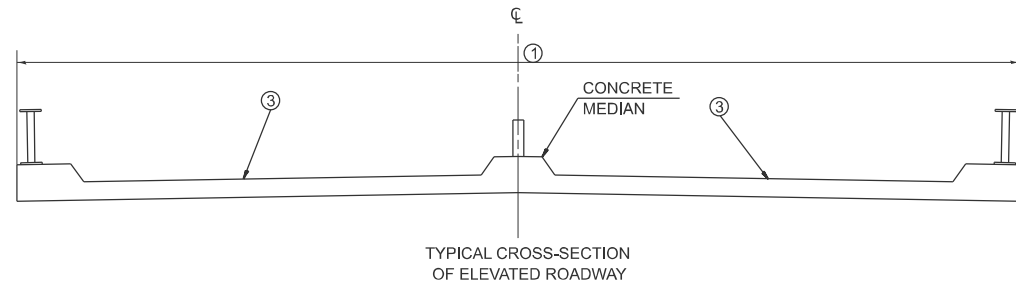
MODEL: GenNote02 (Sheet)
 FILE NAME: c:\p\work\pwr\illinois.gov_jacek.ejmont@illinois.gov\1051693\1149214-shk-gennote.dgn

USER NAME = jacek.ejmont	DESIGNED -	REVISED - / 1 RL 12/20/23	STATE OF ILLINOIS DEPARTMENT OF TRANSPORTATION	SUMMARY OF QUANTITIES AND GENERAL NOTES			F.A. RTE.	SECTION	COUNTY	TOTAL SHEETS	SHEET NO.	
	DRAWN -	REVISED -		SCALE: NONE	SHEET 2	OF 2	SHEETS	STA.	TO STA.	*	10	3
	CHECKED -	REVISED -					CONTRACT NO. 62W55					
PLOT DATE = 10/20/2024	DATE -	REVISED -					ILLINOIS FED. AID PROJECT					

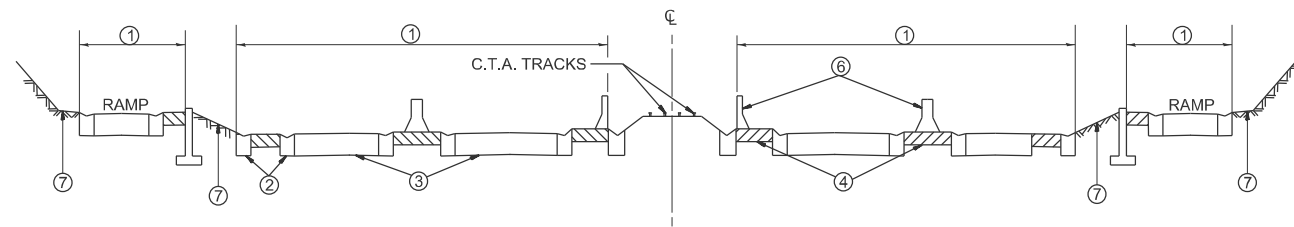
* COOK, DUPAGE, LAKE, WILL



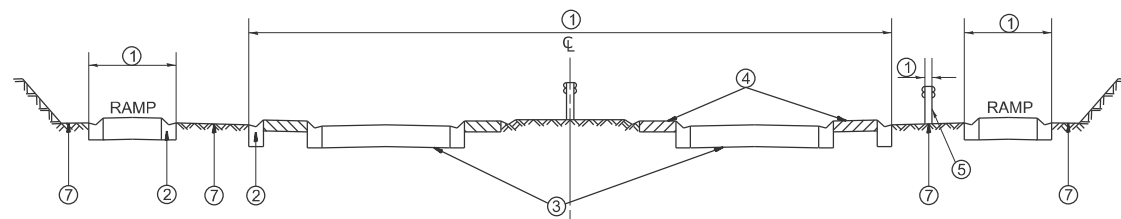
TYPICAL EXPRESSWAY CROSS-SECTION NO. 1



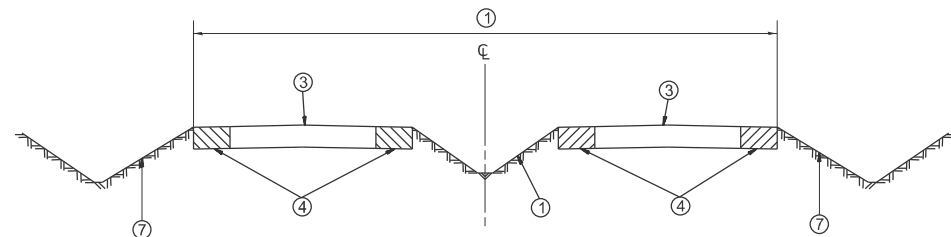
TYPICAL EXPRESSWAY CROSS-SECTION NO. 2



TYPICAL EXPRESSWAY CROSS-SECTION NO. 3



TYPICAL EXPRESSWAY CROSS-SECTION NO. 4



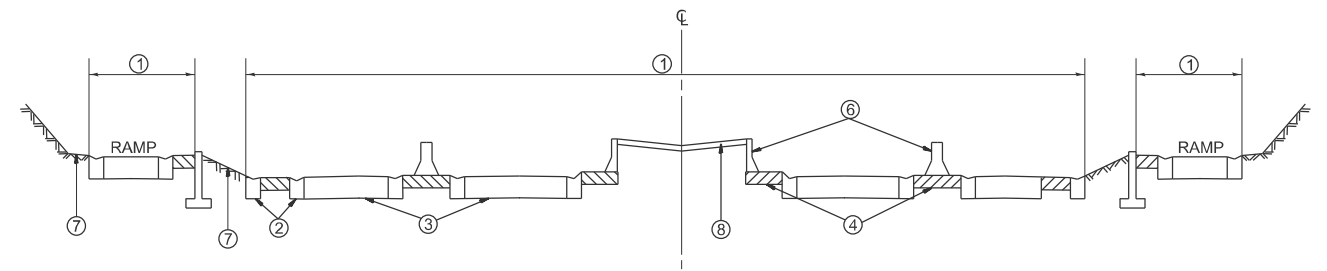
TYPICAL EXPRESSWAY CROSS-SECTION NO. 5

LEGEND

- ① AREA OF ROADWAY CLEANING, DEBRIS AND RUBBISH REMOVAL
- ② CURB AND GUTTER
- ③ TRAVELED ROADWAY
- ④ STABILIZED SHOULDER OR MEDIAN OR SIDEWALK OR NON STABILIZED SURFACES
- ⑤ STEEL PLATE GUARD RAIL (SEE NOTE A)
- ⑥ CONCRETE BARRIER
- ⑦ NON STABILIZED SURFACE
- ⑧ RAISED CONCRETE MEDIAN

NOTE:

- A) ALL MATERIAL/DEBRIS REGARDLESS OF THE THICKNESS AND SIZE SHALL BE REMOVED AND PROPERLY DISPOSED FROM THE STABILIZED SURFACE.
- B) ALL DRAINAGE STRUCTURES MUST BE CLEARED OF DEBRIS WITHIN THE MEDIAN.



TYPICAL EXPRESSWAY CROSS-SECTION NO. 6

MODEL: TypicalSection01 (Sheet)
FILE NAME: c:\p\work\pvt\illinois.gov\jacek.ejmont\illinois.gov\1051693\1149244\shk\typical.dgn

USER NAME = jacek.ejmont	DESIGNED -	REVISED -
	DRAWN -	REVISED -
	CHECKED -	REVISED -
PLOT DATE = 10/20/2024	DATE -	REVISED -

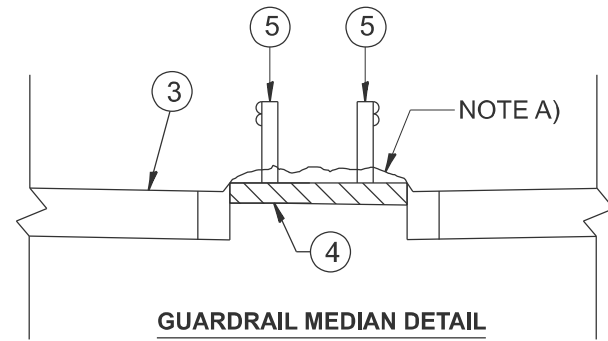
**STATE OF ILLINOIS
DEPARTMENT OF TRANSPORTATION**

**TYPICAL EXPRESSWAY CROSS SECTIONS
VARIOUS EXPRESSWAY SWEEPING**

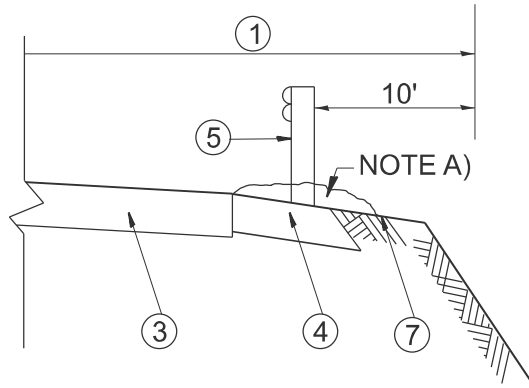
SCALE: NONE SHEET 1 OF 2 SHEETS STA. TO STA.

F.A. RTE.	SECTION	COUNTY	TOTAL SHEETS	SHEET NO.
VAR	2023-SWP-006 (AM)	*	10	4
CONTRACT NO. 62W55				
ILLINOIS FED. AID PROJECT				

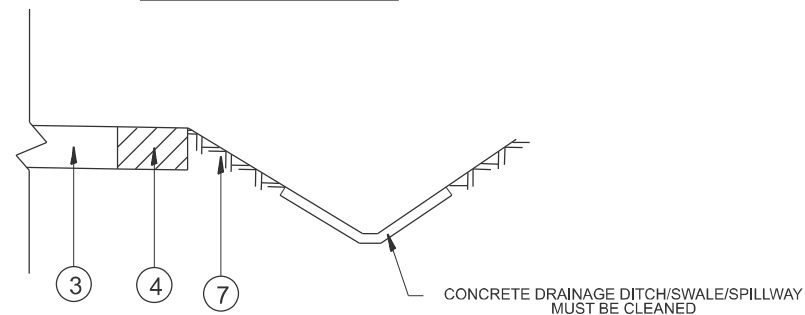
* COOK, DUPAGE, LAKE, WILL



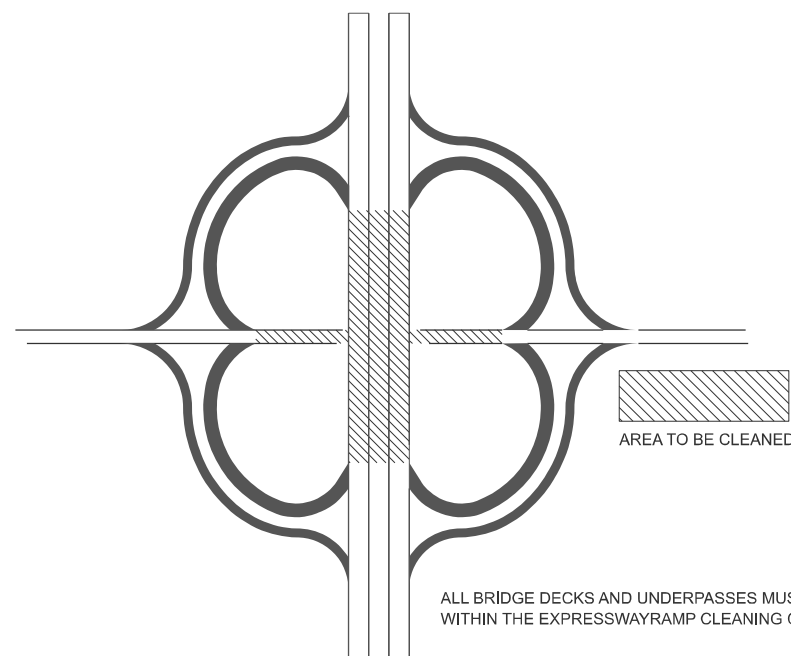
GUARDRAIL MEDIAN DETAIL



GUARDRAIL LABOR DETAIL



EXPRESSWAY WITH DRAINAGE SWALE



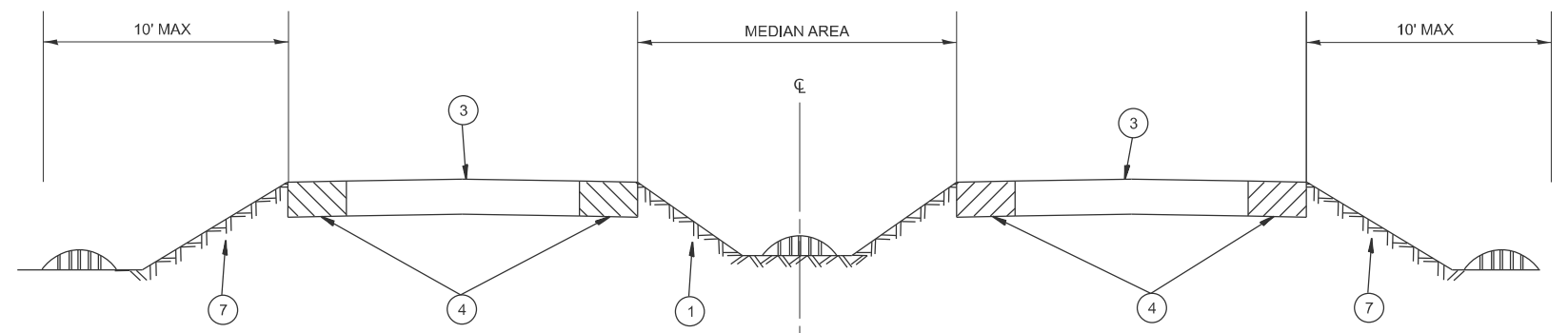
ALL BRIDGE DECKS AND UNDERPASSES MUST BE SWEEPED WITHIN THE EXPRESSWAYRAMP CLEANING CYCLE.

LEGEND

- ① AREA OF ROADWAY CLEANING, DEBRIS AND RUBBISH REMOVAL
- ② CURB AND GUTTER
- ③ TRAVELED ROADWAY
- ④ STABILIZED SHOULDER OR MEDIAN OR SIDEWALK OR NON STABILIZED SURFACES
- ⑤ STEEL PLATE GUARD RAIL (SEE NOTE A)
- ⑥ CONCRETE BARRIER
- ⑦ NON STABILIZED SURFACE
- ⑧ RAISED CONCRETE MEDIAN

NOTE:

- A) ALL MATERIAL/DEBRIS REGARDLESS OF THE THICKNESS AND SIZE SHALL BE REMOVED AND PROPERLY DISPOSED FROM THE STABILIZED SURFACE.
- B) ALL DRAINAGE STRUCTURES MUST BE CLEARED OF DEBRIS WITHIN THE MEDIAN.



STRUCTURE CLEANING DETAIL

MODEL: TypicalSection02 (Sheet)
FILE NAME: c:\p\work\project\illinois.gov\jacek.ejmont\1061683\114924-shk\typical.dgn

USER NAME = jacek.ejmont	DESIGNED -	REVISED -
	DRAWN -	REVISED -
	CHECKED -	REVISED -
PLOT DATE = 10/20/2024	DATE -	REVISED -

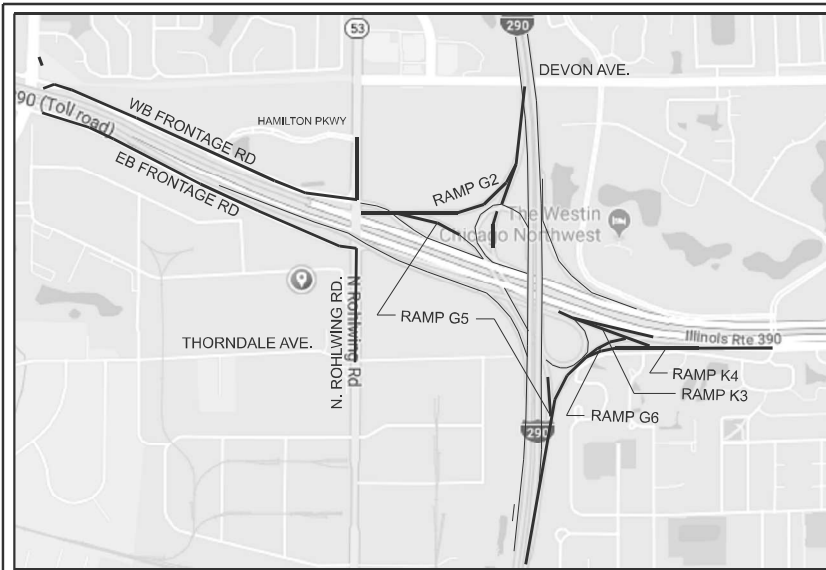
**STATE OF ILLINOIS
DEPARTMENT OF TRANSPORTATION**

**TYPICAL ROADWAY CLEANING DETAILS
A**

SCALE: NONE SHEET 2 OF 2 SHEETS STA. TO STA.

F.A. RTE.	SECTION	COUNTY	TOTAL SHEETS	SHEET NO.
VAR	2023-SWP-006 (AM)	*	10	5
ILLINOIS FED. AID PROJECT			CONTRACT NO. 62W55	

* COOK, DUPAGE, LAKE, WILL



DAY CLEANING ONLY

I-290 Extension

I-290 from Illinois 83 to Interstate 90 Jane Addams Tollway, Illinois 53 from Interstate 90 Jane Addams Tollway to Lake Cook Road including I-355 from I-290 to Army Trail Road.

Edens Expressway

Interstate 94 from Montrose to Dundee Road and U.S. 41 from Dundee Road to Illinois 22 including two ramps at Clavey Road, two ramps at West Park Avenue, four ramps at Deerpath Road and the entire US 41/Deerfield Road interchange. Also included is Tower Road from Edens Expressway to Forestway Drive.

Kennedy Expressway

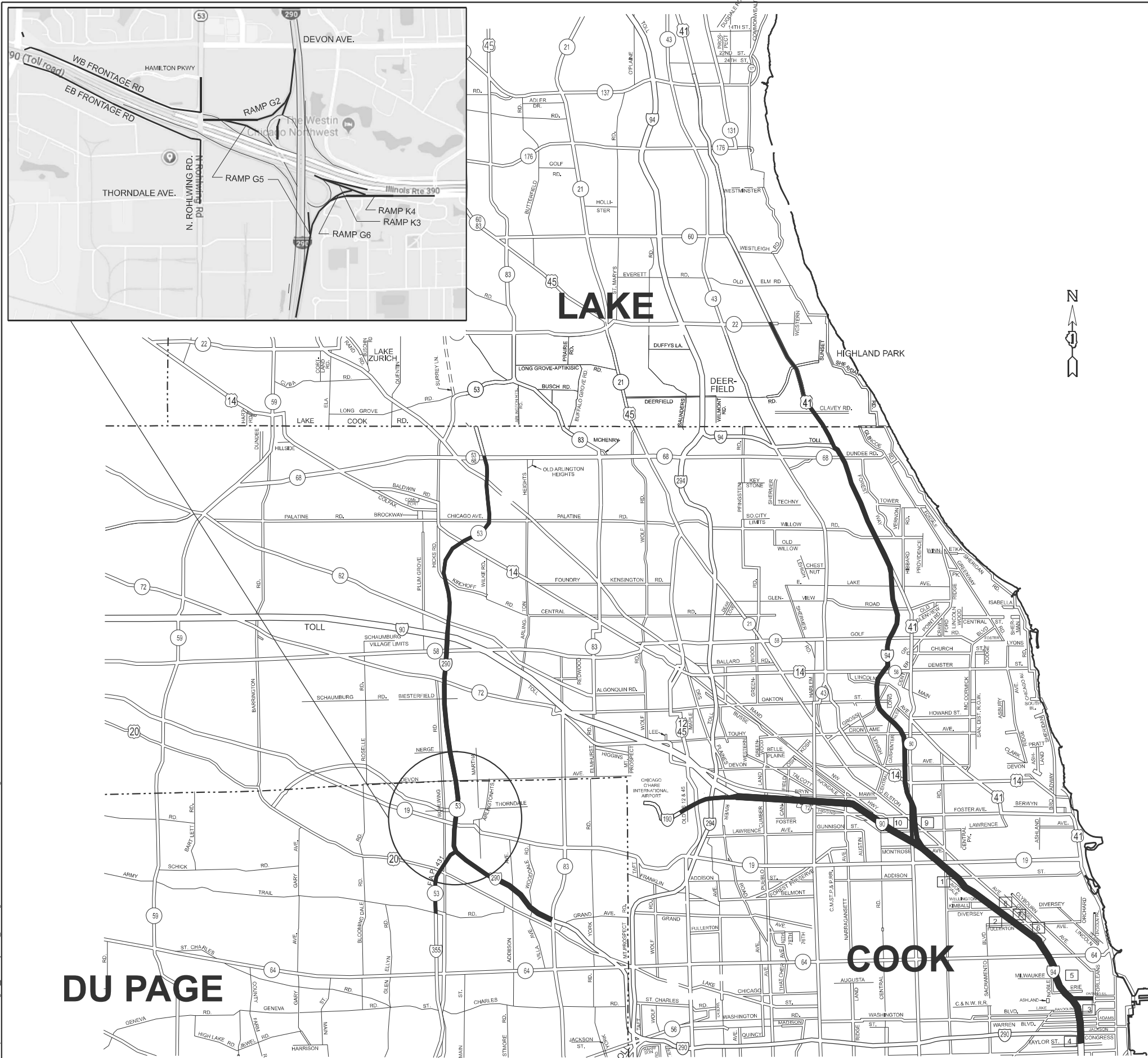
All ramps on Interstate 90/94 from Ogden Ave. to Interstate 90/94 Junction at Edens Expressway, Interstate 90 from Interstate 90/94 Junction at Edens Expressway to Interstate 90/190 Junction, and Interstate 190 from Interstate 90/190 Junction to the East Limits of O'Hare International Airport (Bessie Coleman Rd.) unless ramps are too narrow to allow traffic to pass sweeping crew.

ACCIDENT INVESTIGATION SITES:

- 1 INBOUND INTERSTATE 90/94 AT ADDISON STREET OFF RAMP.
- 2 INBOUND INTERSTATE 90/94 ALONG FULLERTON AVENUE UNDER INTERSTATE 90/94.
- 3 INBOUND INTERSTATE 90/94 IN THE OHIO STREET INFIELD.
- 4 INTERSTATE 90/94 AT POLK AVENUE.
- 5 OUTBOUND INTERSTATE 90/94 ALONG DIVISION STREET OFF RAMP.
- 6 OUTBOUND INTERSTATE 90/94 ALONG INTERSTATE 90/94 AT DAMEN AVENUE.
- 7 OUTBOUND INTERSTATE 90/94 ALONG FULLERTON AVENUE UNDER INTERSTATE 90/94.
- 8 OUTBOUND INTERSTATE 90/94 ALONG KIMBALL STREET OFF RAMP.
- 9 OUTBOUND INTERSTATE 94 ALONG FOSTER AVENUE OFF RAMP.
- 10 OUTBOUND INTERSTATE 90/94 JUST BEFORE LAWRENCE AVENUE OFF RAMP.

DISTRICT NO. 1

- STATE HIGHWAYS & EXPRESSWAYS WITHIN STATE JURISDICTION (EXCEPT TOLLWAYS)
- STATE HIGHWAYS & EXPRESSWAYS TO BE CLEANED
- FUTURE HIGHWAYS
- VARIOUS AGENCIES HIGHWAYS



MODEL: NorthDetail01 (Sheet)
 FILE NAME: c:\p\work\wv\illinois.gov\1051693\114924-4rh-details.dgn

USER NAME = jacek.ejmont	DESIGNED -	REVISED -
	DRAWN -	REVISED -
	CHECKED -	REVISED -
PLOT DATE = 10/20/2024	DATE -	REVISED -

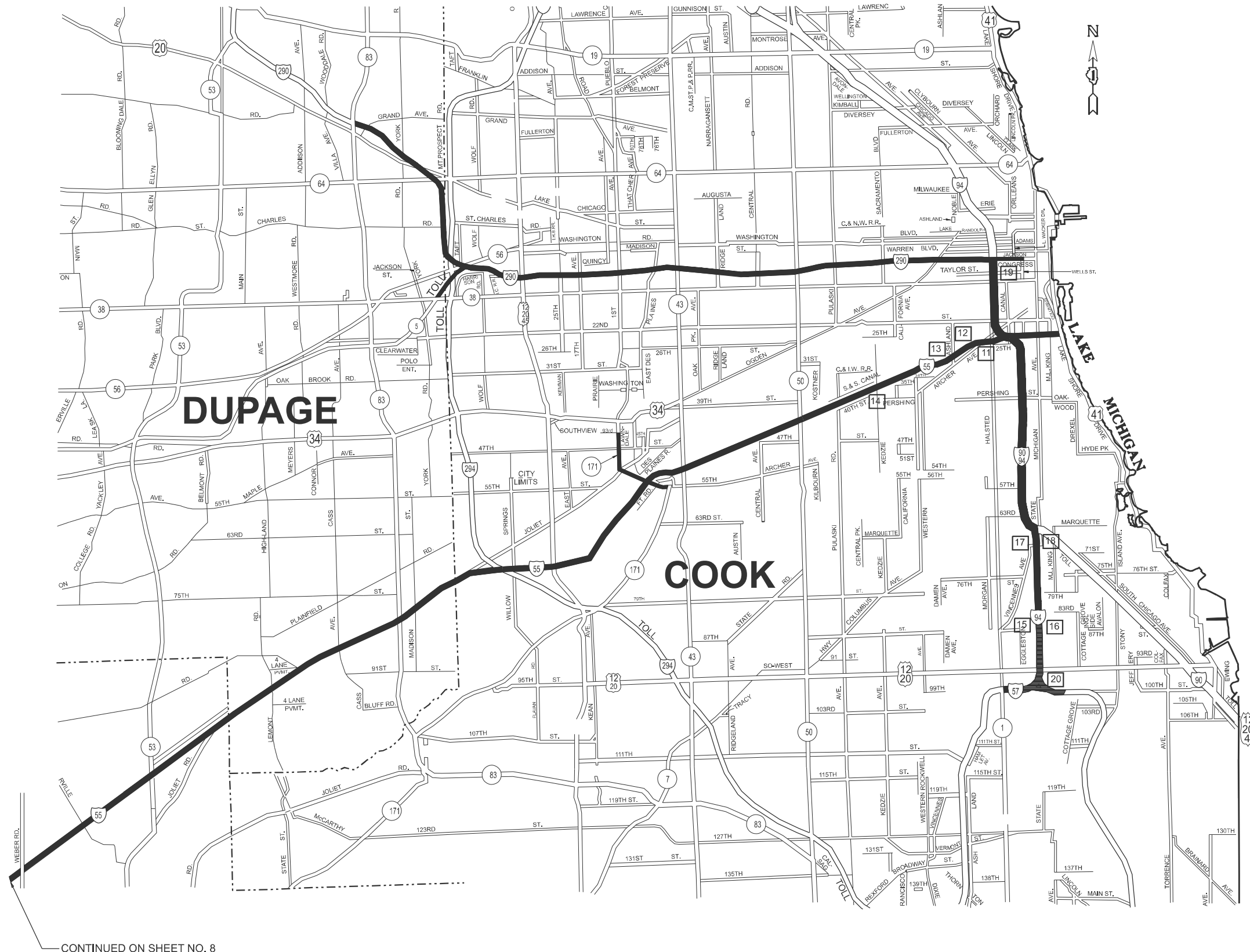
**STATE OF ILLINOIS
DEPARTMENT OF TRANSPORTATION**

**EXPRESSWAY CLEANING LOCATION MAP
I-290 EXTENSION / IL. ROUTE 53, I-90, I-94**

SCALE: NONE SHEET 1 OF 4 SHEETS STA. TO STA.

F.A. RTE.	SECTION	COUNTY	TOTAL SHEETS	SHEET NO.
VAR	2023-SWP-006 (AM)	*	11	6
			CONTRACT NO. 62W55	
ILLINOIS FED. AID PROJECT				

* COOK, DUPAGE, LAKE, WILL



DAY CLEANING ONLY

Eisenhower Expressway

Interstate 290 and its appurtenances from Wells St. to Austin Blvd. in its entirety, from Austin Blvd. to IL-83 right hand side and all ramps. the eastbound collector-distributor lanes and ramps at the U.S. 12/20/45 (Mannheim Rd.) interchange and westbound to Roosevelt Rd. on its extension.

Stevenson Expressway

Interstate 55 (Stevenson Expressway) from Lake Shore Drive to the Cook-DuPage county line (County Line Rd.), including First Avenue, from 43rd Street to Archer Avenue, the ramps to and from Joliet Rd. from Interstate 55 to Wolf Rd, the ramps from northbound Interstate 55 to northbound Interstate 294 Tollway and from southbound Interstate 294 Tollway to northbound Interstate 55 (Limits of cleaning on these ramps are from Interstate 55 to the first painted gore south of the bridge over Joliet rd), and all accident investigation sites, excluding the entire Stevenson - Dan Ryan Interchange.

I 55 Expressway

Interstate 55 from Cook - DuPage county line (County Line Rd.) to I-355, I & M Canal to Will - Grundy county line (Reed Rd.) in its entirety, including all ramps and the entire I-55 - I-80 interchange, all accident investigation sites, Blodgett Rd. from Kelly Rd. to West Frontage Rd., Arsenal Rd. from the East Frontage Rd. to Elwood International Port Rd. (Baseline Rd.), and the West Frontage Rd. Connector from Arsenal Rd. to the southbound entrance ramp.

Dan Ryan Expressway

Interstate 94 from Cottage Grove Ave to 31st St right hand side of both local and express lanes and all ramps except slip ramps between local and express lanes and any ramps too narrow to allow traffic to pass sweeping crew.

ACCIDENT INVESTIGATION SITES:

FOR LOCATIONS 1-10, SEE INNER CITY EXPRESSWAY (NORTH SECTION)

- 11 INBOUND INTERSTATE 55 AT HALSTED STREET
- 12 OUTBOUND INTERSTATE 55 AT THROOP STREET
- 13 INBOUND INTERSTATE 55 AT WOOD STREET. (LOCATED UNDER I-55)
- 14 OUTBOUND INTERSTATE 55 AT KEDZIE AVENUE
- 15 INTERSTATE 90/94 AT 87th STREET (NORTHBOUND AND SOUTHBOUND)
- 16 INTERSTATE 90/94 AT 71st STREET (NORTHBOUND AND SOUTHBOUND)
- 17 INTERSTATE 90/94 AT POLK STREET
- 18 INTERSTATE 90/94 AT KING DRIVE

DISTRICT NO. 1

- STATE HIGHWAYS & EXPRESSWAYS WITHIN STATE JURISDICTION (EXCEPT TOLLWAYS)
- STATE HIGHWAYS & EXPRESSWAYS TO BE CLEANED
- - - FUTURE HIGHWAYS
- VARIOUS AGENCIES HIGHWAYS

CONTINUED ON SHEET NO. 8

MODEL: SouthDetail03 (Sheet)
FILE NAME: c:\p\work\pww\illinois.gov_jacek_ejmont\illinois.gov\1061693D114924-shk-details.dgn

USER NAME = jacek.ejmont	DESIGNED -	REVISD -
	DRAWN -	REVISD -
	CHECKED -	REVISD -
PLOT DATE = 10/20/2024	DATE -	REVISD -

**STATE OF ILLINOIS
DEPARTMENT OF TRANSPORTATION**

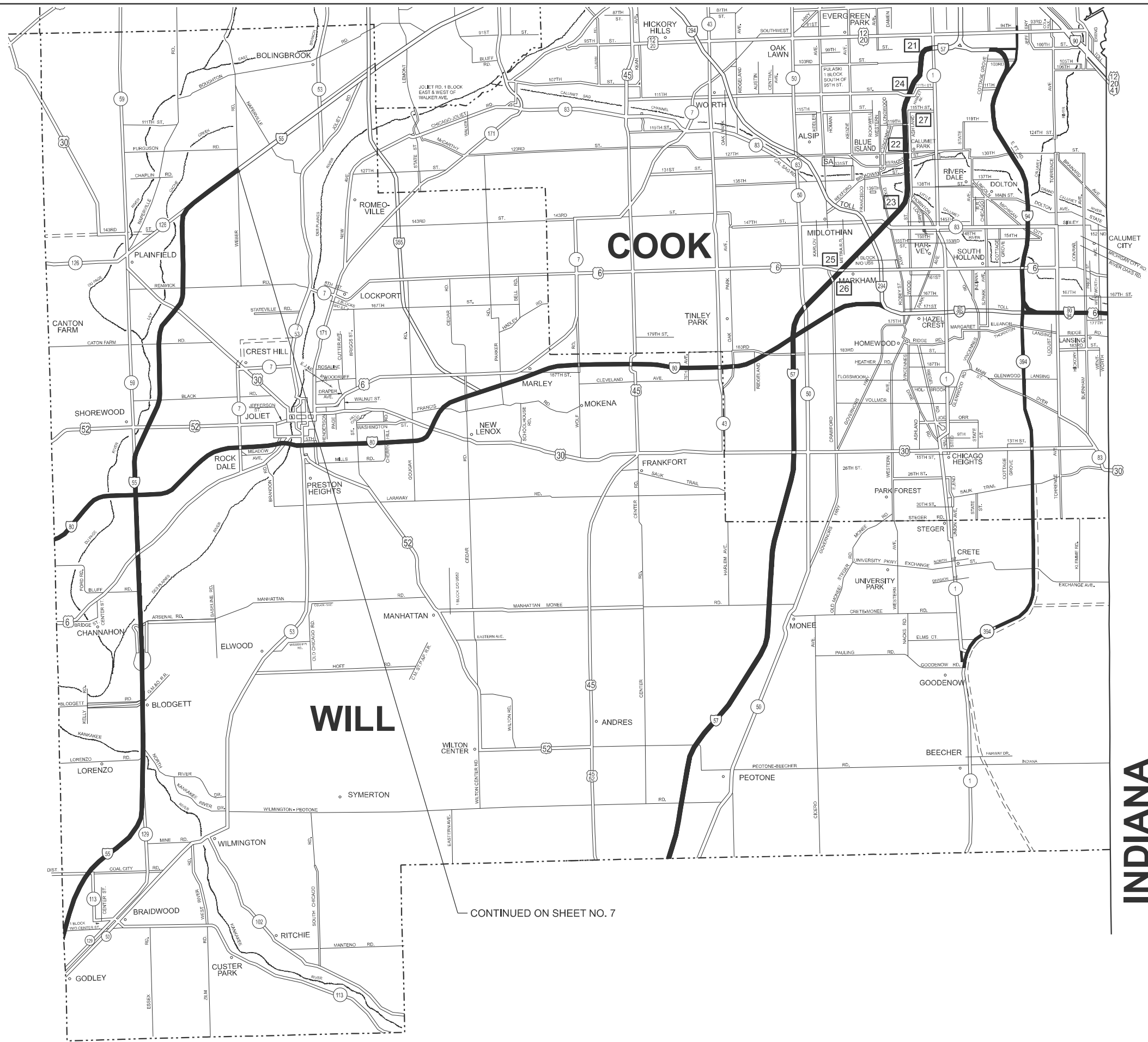
**EXPRESSWAY CLEANING LOCATION MAP
I-55**

SCALE: NONE SHEET 2 OF 3 SHEETS STA. TO STA.

F.A. RTE.	SECTION	COUNTY	TOTAL SHEETS	SHEET NO.
VAR	2023-SWP-006 (AM)	*	10	7
			CONTRACT NO. 62W55	
ILLINOIS FED. AID PROJECT				

* COOK, DUPAGE, LAKE, WILL

MODEL: SouthDetail04 (Sheet)
 FILE NAME: c:\p\work\wv\illinois.gov\1051693\114924-shk-details.dgn



DAY CLEANING ONLY

Bishop Ford/Kingery Expressway

Interstate 94 from Cottage Grove Avenue to the Indiana State line excluding northbound and southbound left hand side from Cottage Grove Ave. to 171st St., Illinois 394 from Interstate 94 to Goodenow Rd. and the entire Stony Island Avenue - 103rd Street Interchange. Interstate 80 from Interstate 94 to Interstate 294 and all accident investigation sites.

I-57 Expressway

Interstate 57 from Halsted Street to the Will-Kankakee County Line, in its entirety including the entire I-57 - I-80 Interchange and all accident investigation sites, and from Interstate 57 to Interstate 94 Dan Ryan right hand side only.

- [21] - [23]** INTERSTATE 57-3 LOCATIONS IN THE MEDIAN BETWEEN HALSTED AND 147TH ST.
- [24]** OUTBOUND INTERSTATE 57 AT 111TH STREET EXIT RAMP
- [25] - [26]** INTERSTATE 57 - 2 LOCATIONS ON THE 167TH STREET RAMPS
- [27]** INTERSTATE 57 - IN THE MEDIAN AT 119TH STREET

I-80 Expressway

Interstate 80 from Interstate 294 Tri-State Tollway/Interstate I-294 to US 30 and ramps I-294 to US 45, including the ramp from eastbound Interstate 80 to northbound Interstate 294 and from southbound Interstate 294 to westbound Interstate 80.

Note:

- Include the following two (2) ramps at Interstate 294
- 1. Southbound Interstate 294 to westbound Interstate 80.
- 2. Eastbound Interstate 80 to northbound Interstate 294.

NOTE: 3

WEST OF WHEELER AVE CAN ONLY BE OCCUPIED BY ONE SWEEPING CREW AT A TIME.

DISTRICT NO. 1

- STATE HIGHWAYS & EXPRESSWAYS WITHIN STATE JURISDICTION (EXCEPT TOLLWAYS)
- STATE HIGHWAYS & EXPRESSWAYS TO BE CLEANED
- FUTURE HIGHWAYS
- VARIOUS AGENCIES HIGHWAYS

CONTINUED ON SHEET NO. 7

USER NAME = jacek.ejmont	DESIGNED -	REVISED -
	DRAWN -	REVISED -
	CHECKED -	REVISED -
PLOT DATE = 10/20/2024	DATE -	REVISED -

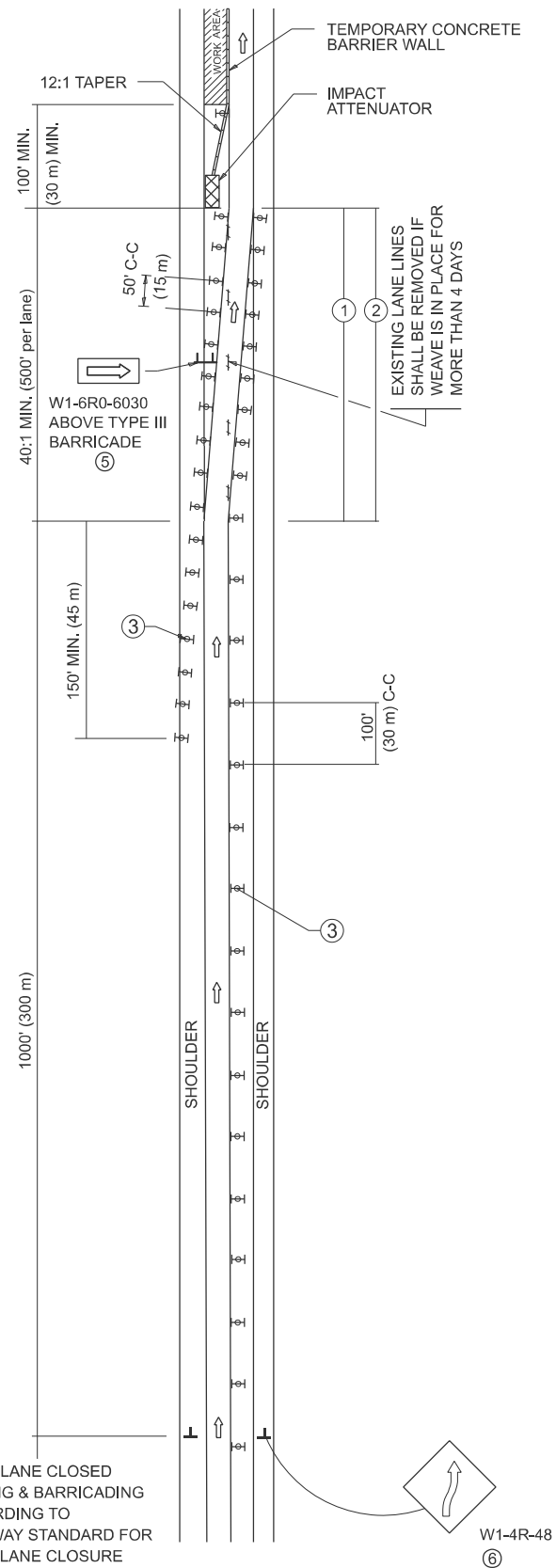
**STATE OF ILLINOIS
 DEPARTMENT OF TRANSPORTATION**

**EXPRESSWAY CLEANING LOCATION MAP
 BISHOP FORD, KINGERY, I-55, I-57, I-80, I-94, IL. ROUTE 394**

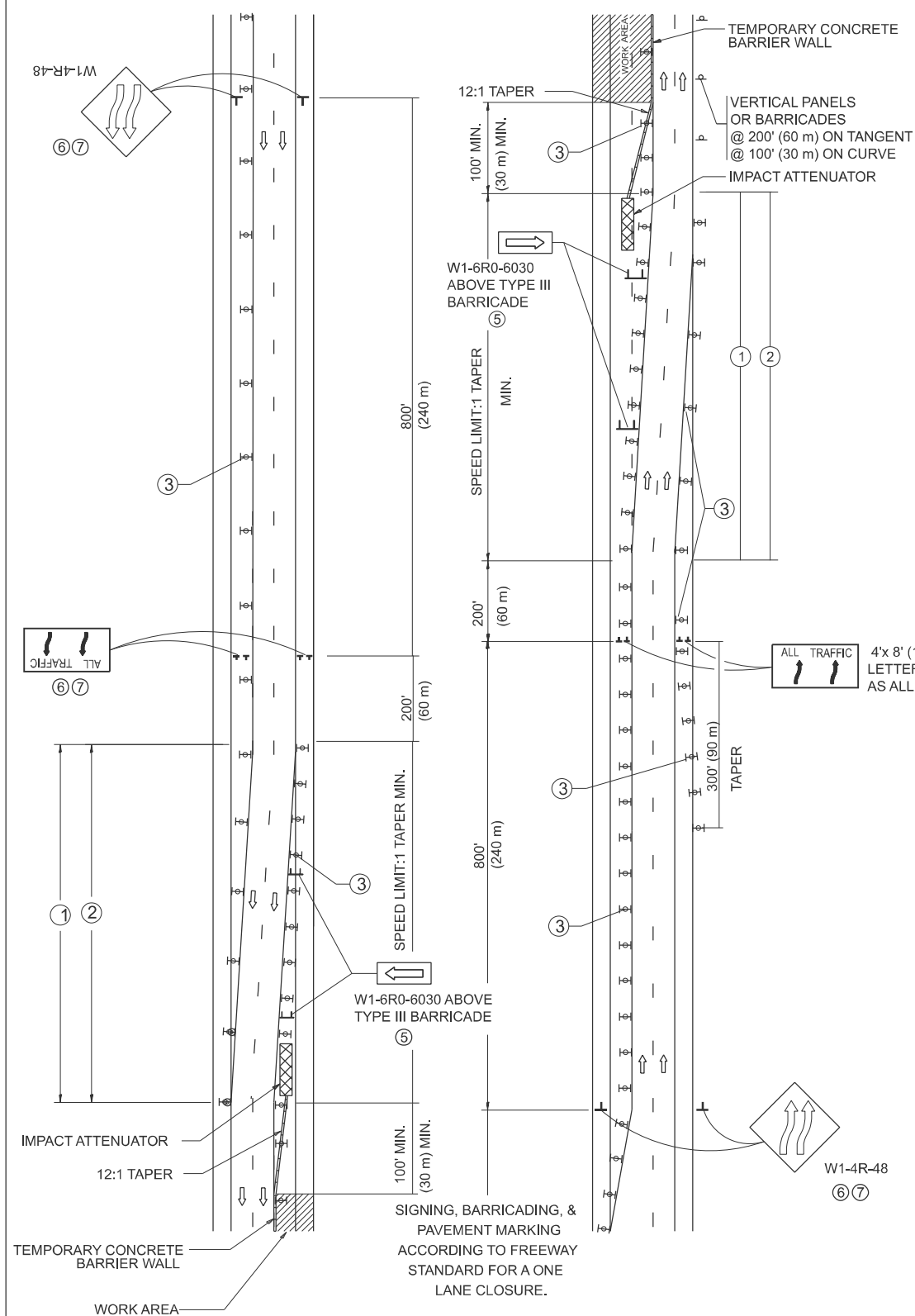
SCALE: NONE SHEET 3 OF 3 SHEETS STA. TO STA.

F.A. RTE.	SECTION	COUNTY	TOTAL SHEETS	SHEET NO.
VAR	2023-SWP-006 (AM)	*	10	8
			CONTRACT NO. 62W55	

SINGLE LANE WEAVE



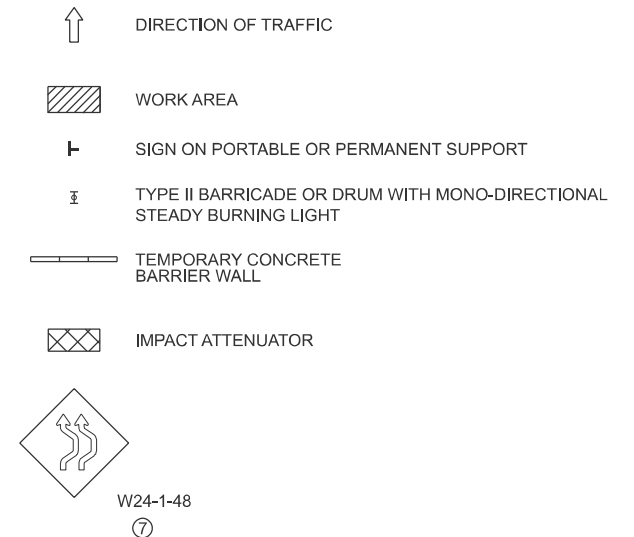
MULTI-LANE WEAVE



GENERAL NOTES:

- ① EXISTING CONFLICTING PAVEMENT MARKING LINES SHALL BE REMOVED. PAVEMENT MARKING REMOVAL SHALL NOT BE REQUIRED FOR SINGLE LANE WEAVES UNDER 4 DAYS IN DURATION.
- ② CONTINUOUS REFLECTIVE TEMPORARY PAVEMENT MARKING TAPE SHALL BE PLACED THROUGHOUT THE TAPER AND FOR 300' (90 m) ALONG SIDE THE WORK AREA WHERE THE CLOSURE TIME IS GREATER THAN FOURTEEN DAYS. THE LEFT EDGE LINE SHALL BE YELLOW AND THE RIGHT EDGE LINE SHALL BE WHITE. FOR MULTI-LANE WEAVES LANE LINES SHALL BE 5 INCH, 10'-30' (3 m-9 m) SKIP DASH, WHITE.
- ③ PLASTIC DRUMS WITH STEADY BURN LIGHTS AT 50' (15 m) C-C SPACING IN TAPERS AND 100' (30 m) C-C SPACING IN TANGENTS.
- ④ ALL SIGNS SHALL BE POST MOUNTED IF THE CLOSURE TIME EXCEEDS FOUR DAYS.
- ⑤ TYPE III BARRICADES MAY BE OMITTED FOR SINGLE-LANE WEAVES UNDER 24-HOURS IN DURATION. W1-6 SIGNS WILL STILL BE REQUIRED. IF THE WIDTH OF OFFSET IS LESS THAN 6' THEN THE TYPE III BARRICADE WITH ATTACHED ARROW SIGN PANEL CAN BE ELIMINATED IN THE TAPER AREAS.
- ⑥ WHEN THE LENGTH OF THE SHIFTED SEGMENT (DISTANCE BETWEEN WEAVE POINTS) IS LESS THAN 1500', DOUBLE REVERSE CURVE SIGNS (W24-1) SHOULD BE USED INSTEAD OF THE REVERSE CURVE (W1-4) SIGNS. ARROWS ON THE 4'X8' "ALL TRAFFIC" SIGNS SHALL BE THE SAME SHAPE.
- ⑦ THE NUMBER OF ARROWS ON THESE SIGNS SHALL MATCH THE NUMBER OF LANES OPEN TO TRAFFIC.

SYMBOLS



ALL DIMENSIONS ARE IN INCHES (MILLIMETERS) UNLESS OTHERWISE SHOWN

MODEL: TC09 (Sheet)
FILE NAME: c:\p\work\vw\illinois.gov_jacek.ejmont\illinois.gov\1051693\114924-41h-DistSids.dgn

USER NAME = jacek.ejmont	DESIGNED - D.W.S.	REVISED - J.A.F. 02-06
	DRAWN -	REVISED - S.P.B. 01-07
	CHECKED -	REVISED - S.P.B. 12-09
PLOT DATE = 10/20/2024	DATE - 02-87	REVISED - M.D. 06-13

STATE OF ILLINOIS
DEPARTMENT OF TRANSPORTATION

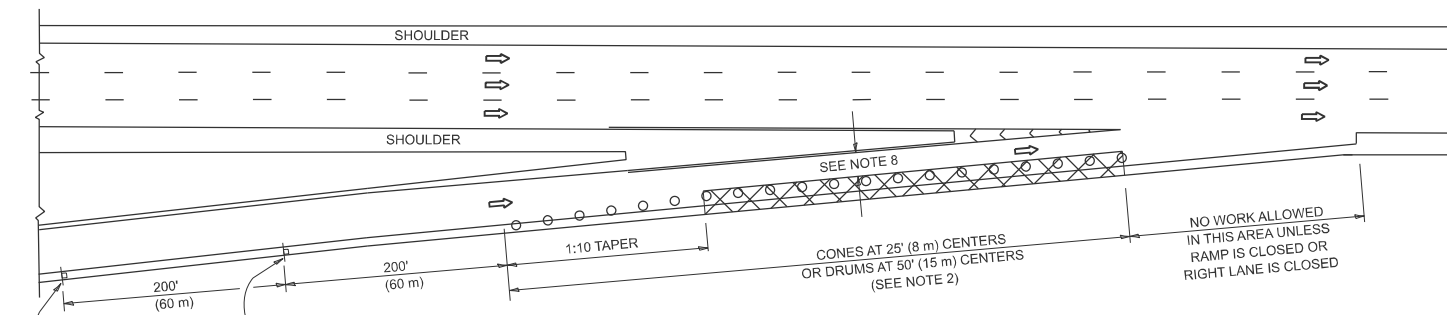
TRAFFIC CONTROL DETAILS FOR
FREEWAY SINGLE & MULTI-LANE WEAVE

SCALE: NONE SHEET 1 OF 1 SHEETS STA. TO STA.

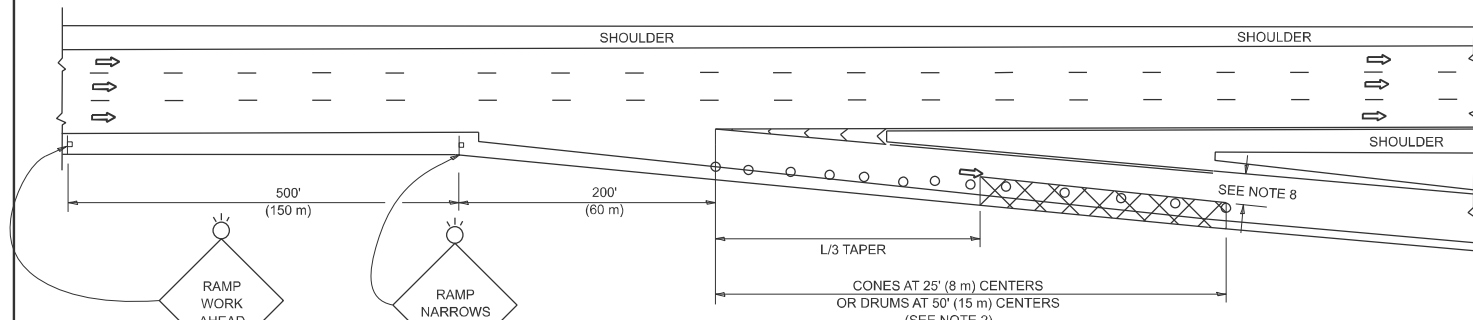
F.A. RTE.	SECTION	COUNTY	TOTAL SHEETS	SHEET NO.
VAR	2023-SWP-006 (AM)	*	10	9
TC-09		CONTRACT NO. 62W55		
ILLINOIS		FED. AID PROJECT		

* COOK, DUPAGE, LAKE, WILL

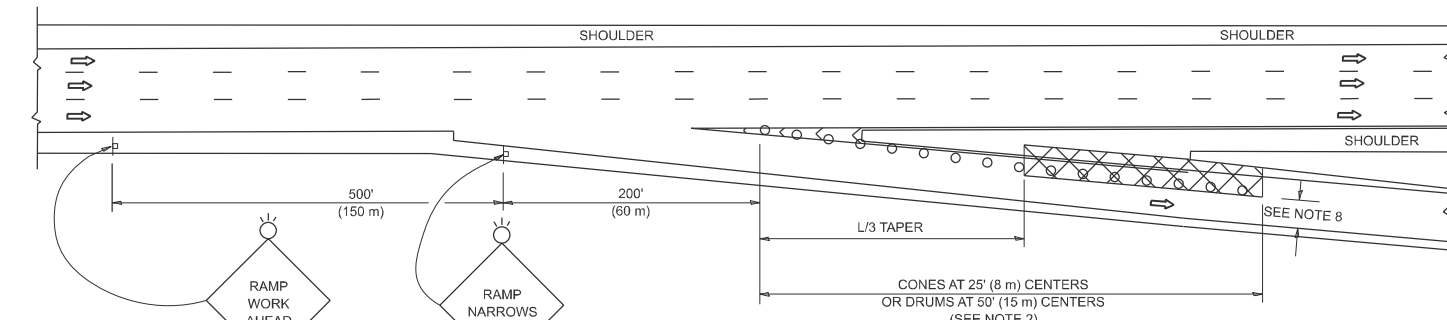
PARTIAL RAMP CLOSURE DETAILS



TYPICAL ENTRANCE RAMP



TYPICAL EXIT RAMP



TYPICAL EXIT RAMP

SYMBOLS

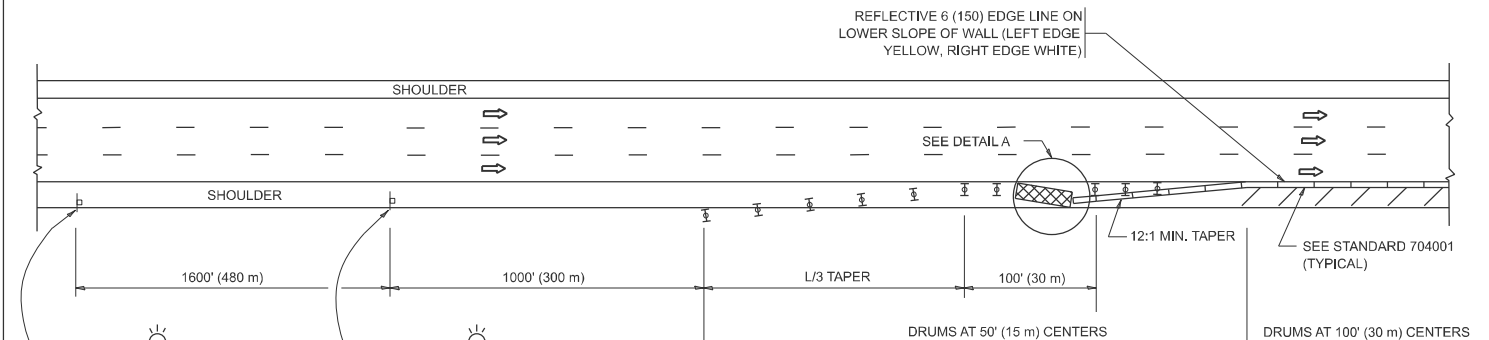
- ACTIVE WORK AREA
- SIGN ON PORTABLE OR PERMANENT SUPPORT
- FLAGGER WITH CONTROL SIGN
- TYPE II BARRICADE OR DRUM
- CONE, DRUM OR BARRICADE
- IMPACT ATTENUATOR OF TYPE AND TEST LEVEL SPECIFIED

GENERAL NOTES:

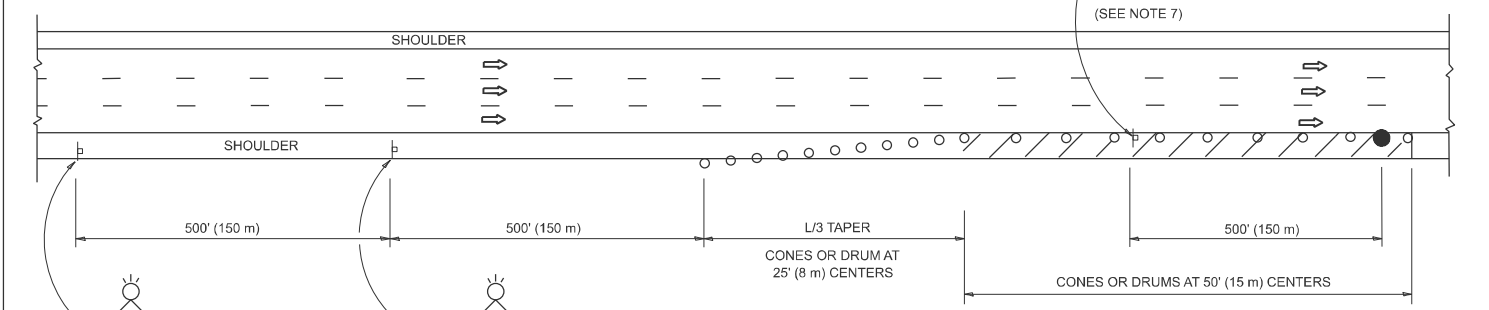
- THE "L" DISTANCE EQUALS:

SPEED LIMIT	FORMULAS
45 mph (80 km/h) OR GREATER:	METRIC ENGLISH L=0.65(W)(S) L=(W)(S)
W = WIDTH OF OFFSET IN FEET (METERS)	
S = NORMAL POSTED SPEED MPH (KM/H)	
- TYPE II BARRICADES OR DRUMS ARE REQUIRED FOR ALL NIGHTTIME CLOSURES. TYPE II BARRICADES OR DRUMS WITH MONODIRECTIONAL STEADY BURN LIGHTS ARE REQUIRED FOR DELINEATING OBSTACLES, EXCAVATIONS, OR HAZARDS EXCEEDING 100 FT (30m) IN LENGTH AT NIGHT.
- ALL SIGNS SHALL BE POST MOUNTED IF THE CLOSURE TIME EXCEEDS FOUR DAYS.
- FLASHING LIGHTS SHALL BE USED DURING THE HOURS OF DARKNESS AND SHALL BE INSTALLED ABOVE THE FIRST TWO SETS OF SIGNS.

SHOULDER CLOSURE DETAILS



PERMANENT SHOULDER CLOSURE



TEMPORARY SHOULDER CLOSURE

ARRAY DESIGN PER MANUFACTURER TO BE NCHRP 350/MASH COMPLIANT.

**DETAIL "A"
IMPACT ATTENUATOR, TEMPORARY
(SEE NOTE 5)**

- THE IMPACT ATTENUATOR, TEMPORARY IS NOT REQUIRED WHEN THE TEMPORARY CONCRETE BARRIER WALL IS PROTECTED BY OR IS TIED INTO THE EXISTING GUARDRAIL. IF OFFSET IS LESS THAN 5 FEET USE NARROW USE TYPE DEVICE TO MEET NCHRP350/MASH.
- AUTHORIZATION FROM THE DISTRICT'S BUREAU OF TRAFFIC IS REQUIRED FOR ALL FREEWAY CLOSURES.
- THE FLAGGER AND FLAGGER SIGN ARE REQUIRED AT THE ABOVE WORK SITES WHEN:
 - FOUR OR MORE WORK VEHICLES ENTER THE TRAFFIC LANES IN A ONE HOUR PERIOD.
 - THE WORK ACTIVITY REQUIRES FREQUENT ENCR OACHMENT INTO THE LANE OPEN TO TRAFFIC.
 THE FLAGGER SHALL BE STATIONED APPROXIMATELY 100' (30 m) TO 200' (60 m) IN ADVANCE OF THE WORKERS.
- 12' MIN. WIDTH TANGENT SECTION
16' MIN. WIDTH CURVE SECTION.
- TEMPORARY SHOULDER AND NON-SYSTEM INTERCHANGE PARTIAL RAMP CLOSURES ARE ALLOWED WEEKDAYS BETWEEN 9:00 A.M. AND 3:00 P.M. AND BETWEEN 7:00 P.M. AND 5:00 A.M. OR AS APPROVED BY THE EXPRESSWAY TRAFFIC OPERATIONS ENGINEER. PERMANENT SHOULDER AND PARTIAL RAMP CLOSURES WILL ONLY BE PERMITTED IF CALLED FOR IN THE PLANS OR AS APPROVED BY THE EXPRESSWAY OPERATIONS ENGINEER.

ALL DIMENSIONS ARE IN INCHES (MILLIMETERS) UNLESS OTHERWISE SHOWN.

MODEL: TC-17 (Sheet)
FILE NAME: c:\p\work\wv\illinois.gov_jacek.ejmont\1061693D114924-41h\IllStds.dgn

USER NAME = jacek.ejmont	DESIGNED -	REVISED - M.D. 06-13
	DRAWN - D.W.S.	REVISED - M.D. 01-18
	CHECKED -	REVISED - M.D. 10-20
PLOT DATE = 10/20/2024	DATE - 11-96	REVISED - D.S. 05-24

**STATE OF ILLINOIS
DEPARTMENT OF TRANSPORTATION**

**TRAFFIC CONTROL DETAILS FOR FREEWAY
SHOULDER CLOSURES AND PARTIAL RAMP CLOSURES**

SCALE: NONE SHEET 1 OF 1 SHEETS STA. TO STA.

F.A. RTE.	SECTION	COUNTY	TOTAL SHEETS	SHEET NO.
VAR	2023-SWP-006 (AM)	*	10	10
TC-17		CONTRACT NO. 62W55		
ILLINOIS FED. AID PROJECT				

* COOK, DUPAGE, LAKE, WILL